



Lesotho

Situation Report #1

Date [26 May 2016]

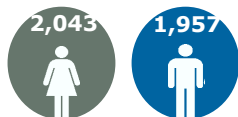
In Numbers

- 679,437** rural people affected
- All 10 districts** affected
- 477,000** people in need of immediate food assistance
- 4,000** cash-transfer (households)

Highlights

- The results by the Lesotho Vulnerability Committee (LVAC) shows that 679,437 rural people affected by the El Niño drought are in need of livelihood and food assistance.
- WFP is appealing for financial assistance to implement its wider response programme targeting 263,000 people in the worst affected areas.

Beneficiaries



Funding Update

Humanitarian Requirements: USD 54 million requested

Requirements: WFP response starting June 2016 to December 2017: USD 27 million

WFP net funding requirements: USD 26 million.

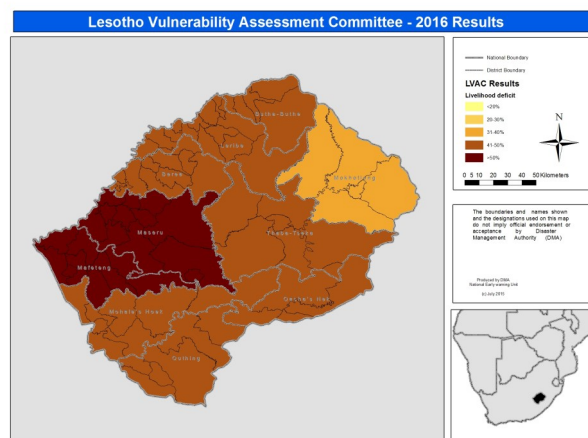
Food Security Cluster USD 25 million (M370,891,000) June 2016 to May 2017 (LVAC 2016).

Situation Update

- Lesotho is severely affected by the El Niño -induced drought that crippled crop planting between October and December 2015. Crop production reduced by 89 percent in the 2015/16 agricultural season (LVAC results).
- A total of 679,437 rural people are affected and 50,799 mt of food is needed to meet their needs and to avert malnutrition-related complications. The food security situation is expected to worsen as the year progresses into 2017.
- In response to the drought, Lesotho Red Cross Society is providing food assistance to 1,800 households in some parts of Mafeteng, Thaba Tseka and Qacha's Nek districts. World Vision Lesotho is also giving food to 7,000 households in some parts of Berea, Butha Buthe, Leribe, Mafeteng, Maseru, Mohale's Hoek and Qacha's Nek districts. The two food assistance programmes are ending in June 2016. Starting in May to July, Catholic Relief Services will provide USD 70 (M1,060) worth of assistance to 185 households in some parts of Mohale's Hoek district.

WFP Response.

- Starting in March to August 2016, WFP is providing USD 65 (M1,020) worth of assistance to each of the 4,000 representatives of households affected by drought in Mafeteng and Mohale's Hoek districts. WFP is also providing nutrition assistance to 1,700 most affected children aged 6 to 59 months and 300 pregnant and nursing mothers in Mafeteng district for the prevention of acute malnutrition.
- Through the new Protracted Relief and Recovery Operations (PRROs), WFP aim to reach 263,000 people through conditional and unconditional cash and food assistance; and to provide nutrition sensitive education in districts most affected by the drought.
- The 2016 LVAC results show that five worst affected districts are Maseru, Butha Buthe, Mafeteng, Mohale'Hoek and Quthing.



Name of the country: Lesotho

Photo: Some members of the Moletsane family receiving WFP cash assistance enjoy a lunch meal at their home in Mohale's Hoek WFP/Tsitsi Matope

Clusters



Food Security Cluster

- According to the LVAC, immediate food assistance (36,373 mt) or USD 25 million, is needed to assist 477,000 people throughout the country. Through the funding received by humanitarian partners, WFP, Lesotho Red Cross Society, World Vision Lesotho and the Catholic Relief Services have started providing food and cash assistance in some parts of the most affected districts.



Logistics Cluster

- The Logistics cluster met in May to discuss arrangements on the distribution of the 60 mt of food donated to the Government of Lesotho by the Government of Botswana in March 2016; and about 2000 mt of rice expected from the Government of China. Following the LVAC results, a planning meeting will be held this May for feedback on the districts likely to be targeted for food assistance.
- Working closely with partners, including the Disaster Management Authority (DMA), the Food Management Unit and the Police, in this emergency, WFP will provide support in food handling and transportation.

Partnerships

- WFP is working with the Ministry of Social Development and the Disaster Management Authority (DMA) in the targeting and monitoring of the people receiving cash assistance.
- To enhance the recovery of the drought- affected people, FAO will provide agricultural inputs aiming at promoting conservation agriculture. People to be supported will include those receiving the WFP cash assistance in Mafeteng and Mohale's Hoek districts.
- In the implementation of the PRRO, WFP will partner with line-government ministries and Non

Governmental Organisations including, World Vision Lesotho , Lesotho Red Cross Society and Action Aid.

Resourcing Update

- Following the launch of a wider programme (PRRO) in May, WFP has intensified resource mobilisation efforts to raise funding for it's planned operations.
- WFP requires USD 26 million to meet the requirements of the three pillars of the PRRO aiming to: a) Provide immediate food needs, b) Promote recovery and resilience through community participation in nutrition activities and the creation of productive and environmental rehabilitation assets and c) To develop the capacity of the government safety-net programmes.
- WFP's six months response in Mafeteng and Mohale's Hoek districts is funded by the United Nations Central Emergency Relief Fund (CERF) and the European Commission Humanitarian Aid and Civil Protection (ECHO).

Impact of Limited Funding

- Despite increasing food and nutrition needs, funding limitations are affecting the levels of assistance by WFP. The worst affected are vulnerable people on Anti-Retroviral Therapy and TB treatment. The Country Office needs USD 26 million to implement a wider response programme.
- Low dietary diversity is affecting 62 percent of the rural population while 41 percent of the population is spending more than 50 percent of their income on food (LVAC 2016).
- The LVAC results also showed high levels of acute malnutrition in the Senqu River area (4 percent), the Southern lowlands (3.4 percent) and in the mountain areas at (2.7 percent). The national average is 2.7%.

Contacts

Name: Tsitsi Matope, Reports and Communications Officer, Email: tsitsi.matope@wfp.org

Country Director: Mary Njoroge

WFP Operation in May 2016

	Total Requirements (in USD)	Total Received (in USD)	6 Months Net Funding Requirements (in USD)	People Reached (current distribution cycle)	Female	Male
IR-EMOP (4000) (3 months)	One million	One million	00-00	4,000 hh	2,043	1,957
Activity 1	Cash distribution in Mafeteng	USD 150,751	00-00	1,902 hh	979	923
Activity 2	Cash Distribution in Mohale's Hoek	USD 155,979	00-00	2,098 hh	1,064	1,034
Project B (total)						
Activity 1						
Activity 2						