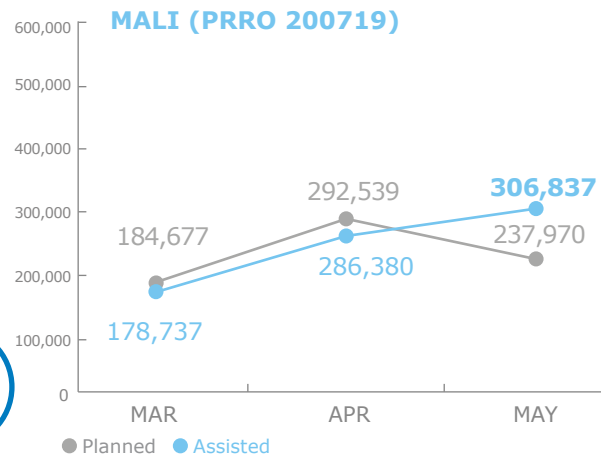
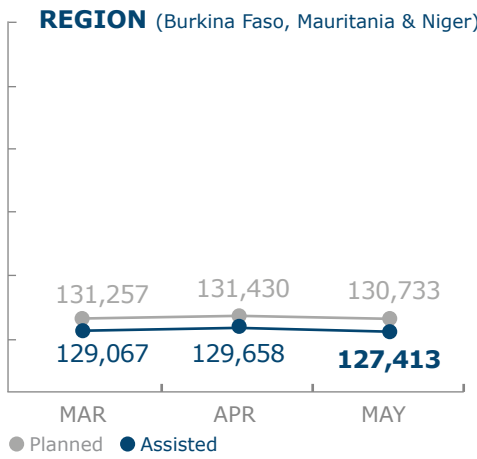


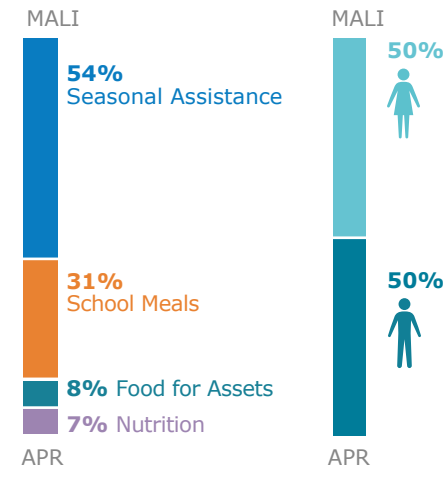
PEOPLE ASSISTED



RELIEF OPERATIONS IN MALI AND THE REGION



OPERATIONAL PROFILE



FUNDING

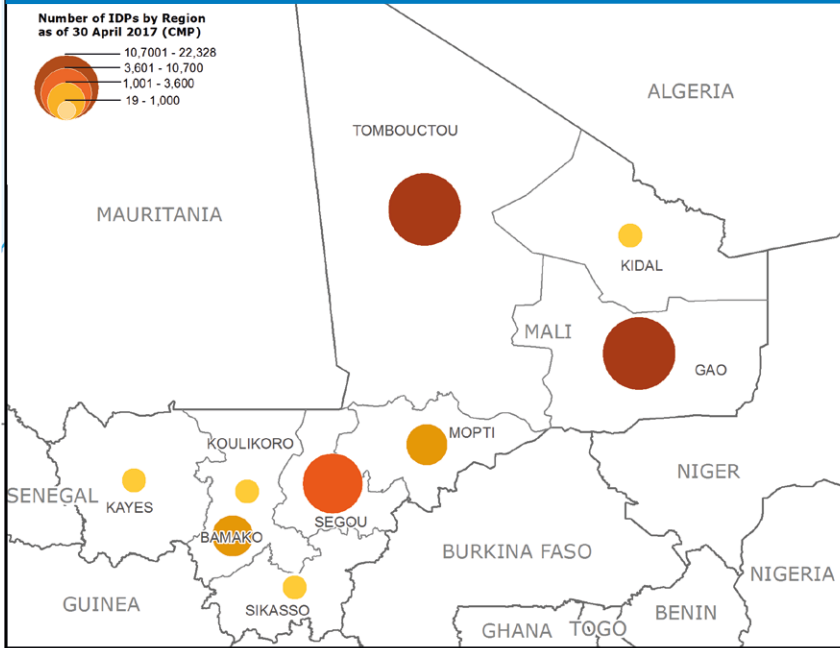
Mali Protracted Relief & Recovery Operation 200719

July - December 2017

US\$32.1m Net Funding Requirements

Source: WFP, 22 June 2017

IDP Concentration as of 30 April (IOM)



Food Security Classification

(Cadre Harmonisé - March 2017)

- Minimal (Phase 1)
- Stressed (Phase 2)
- Crisis (Phase 3)
- Emergency (Phase 4)
- Famine (Phase 5)

2017 PROJECT RESOURCES

Special Operation UN Humanitarian Air Service (UNHAS) 201047

48% 2017 Received: US\$3m | 2017 Required: US\$7m

Source: WFP, 22 June 2017

WFP LED & CO-LED SECTORS

Number of Partners: **98** (2017)

Food Security and Livelihoods Sector

Requirements: US\$93m | Received: US\$35m (37%)

UN Humanitarian Air Service (UNHAS)

Passengers Transported: 784 (Feb), 921 (Mar), 799 (Apr)

Organizations Supported: 74 (Feb), 81 (Mar), 85 (Apr)

Source: OCHA FTS, 22 June

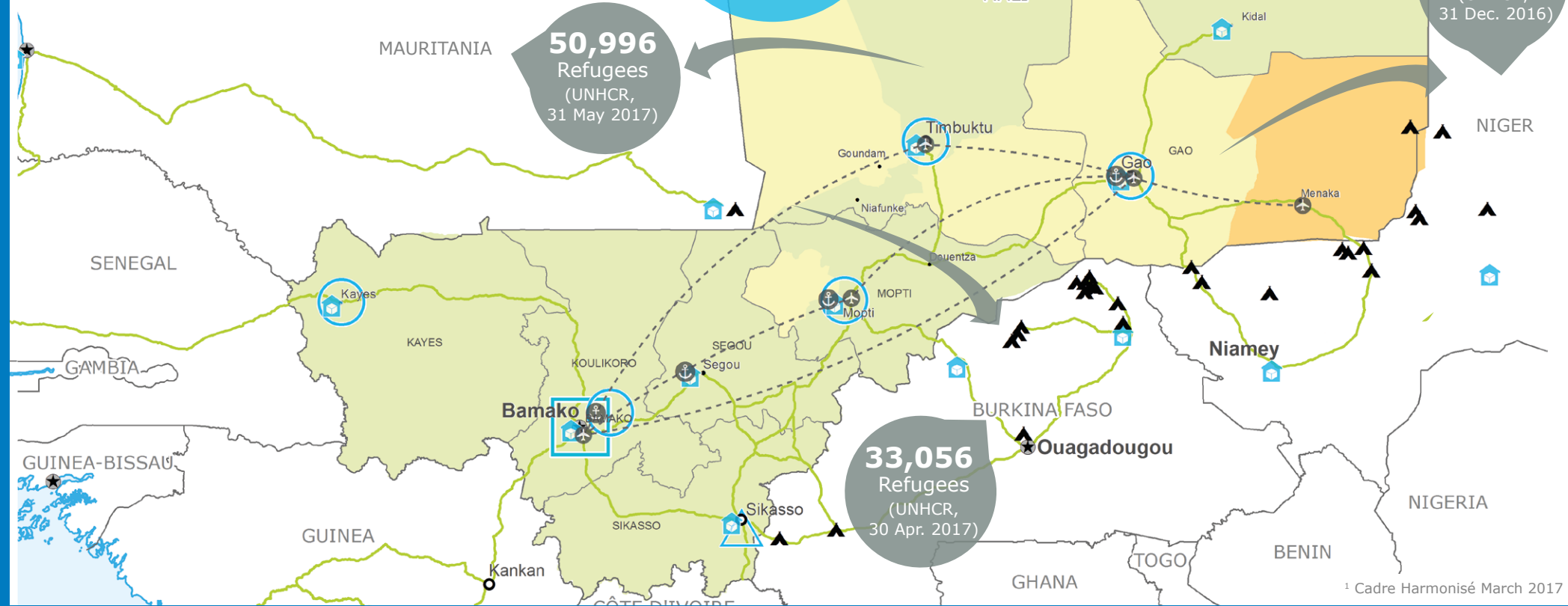
WFP LEVEL 2 EMERGENCY

SINCE 12 JANUARY 2012

For more information, see the **SITUATION REPORT** and **COUNTRY BRIEF** www.wfp.org/countries/mali

2A RELIEF OPERATION 200719

<http://documents.wfp.org/stellent/groups/public/documents/ep/WFP284303.pdf>



- Country Office
- Warehouse
- National Capital
- International boundary
- Sub Office
- UNHAS Connection
- Major Town
- Region boundary
- Field Office
- UNHAS Route
- Intermediate Town
- River
- Small Town
- Surface Waterbody

Sources: WFP, UNGIWG, GAUL, GLCSC, OCHA, UNHCR, Cadre Harmonisé (March 2016). The designations employed and the presentation of material in the map(s) do not imply the expression of any opinion on the part of WFP concerning the legal or constitutional status of any country, territory, city or sea, or concerning the delimitation of its frontiers or boundaries. © World Food Programme 2017