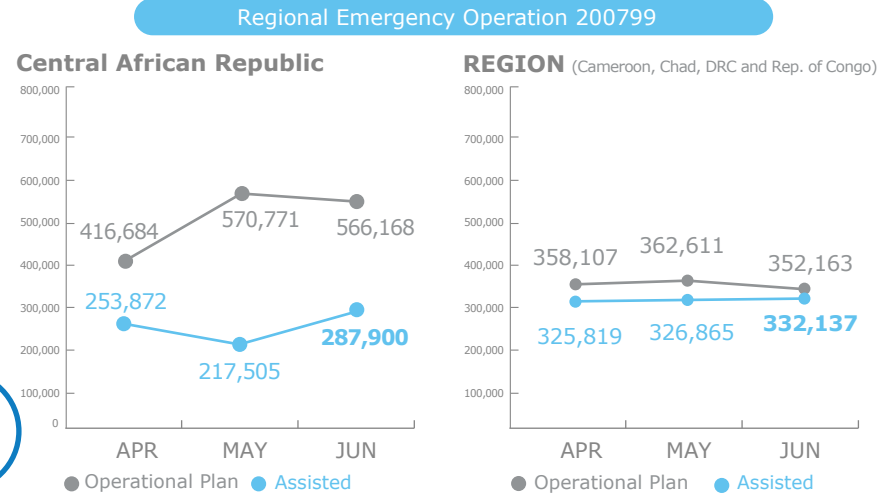


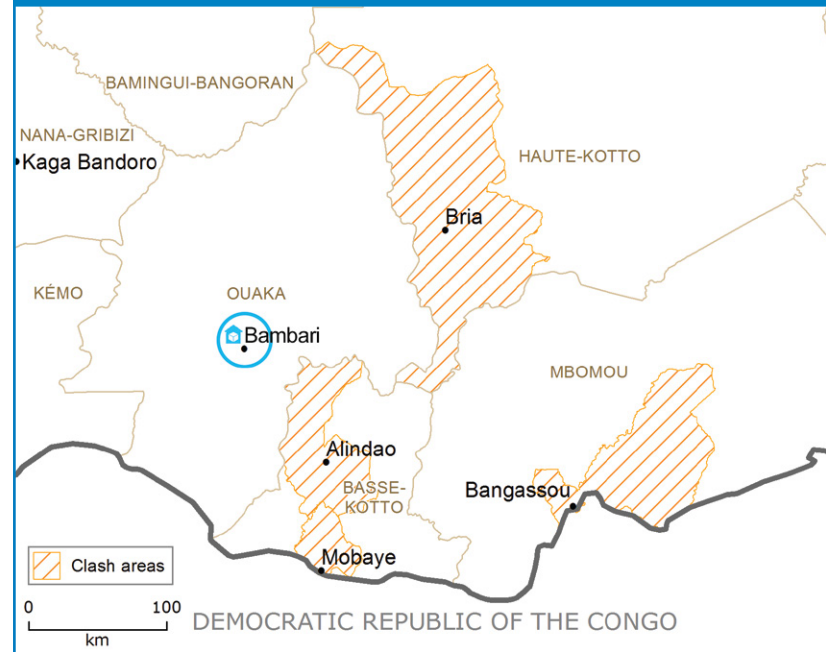
PEOPLE ASSISTED



FUNDING



CRISIS IN HAUTE-KOTTO, BASSE-KOTTO and MBOMOU

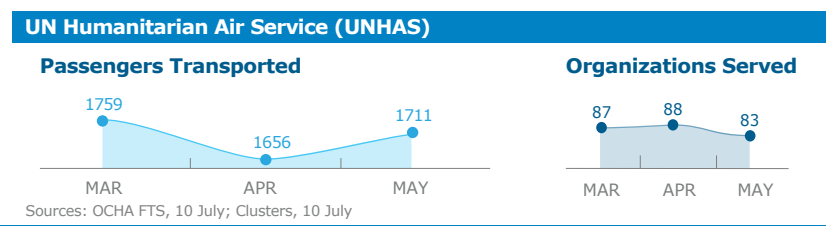
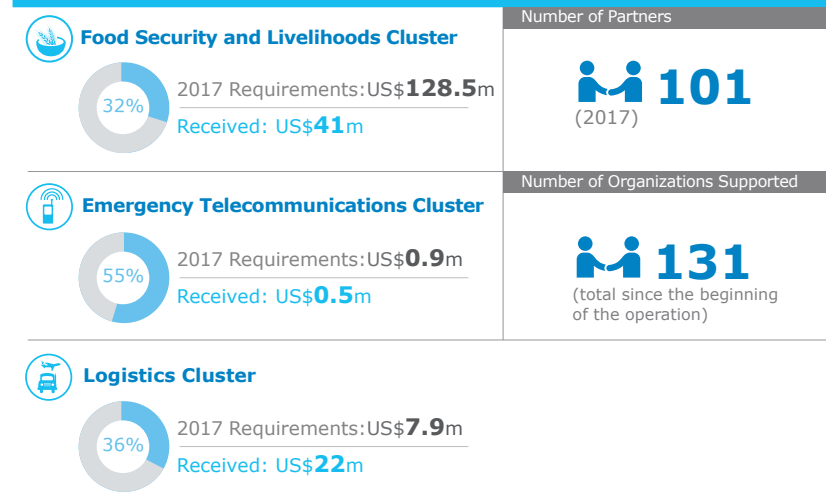


WFP assistance: up to **39,000** people targeted under immediate response

C.A.R. Immediate Response Emergency Operation (IR - EMOP) 201078 (May- August 2017):

US\$1.5m Total Requirements

WFP LED & CO-LED CLUSTERS



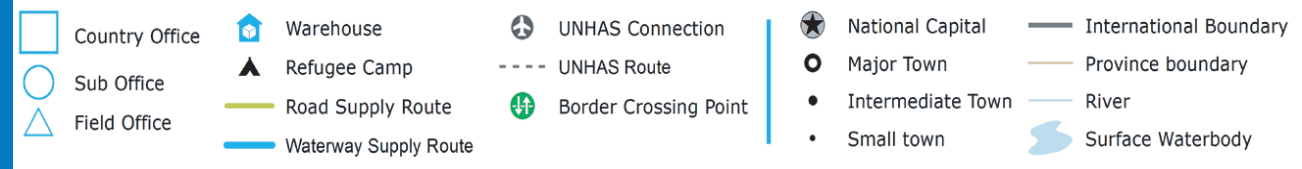
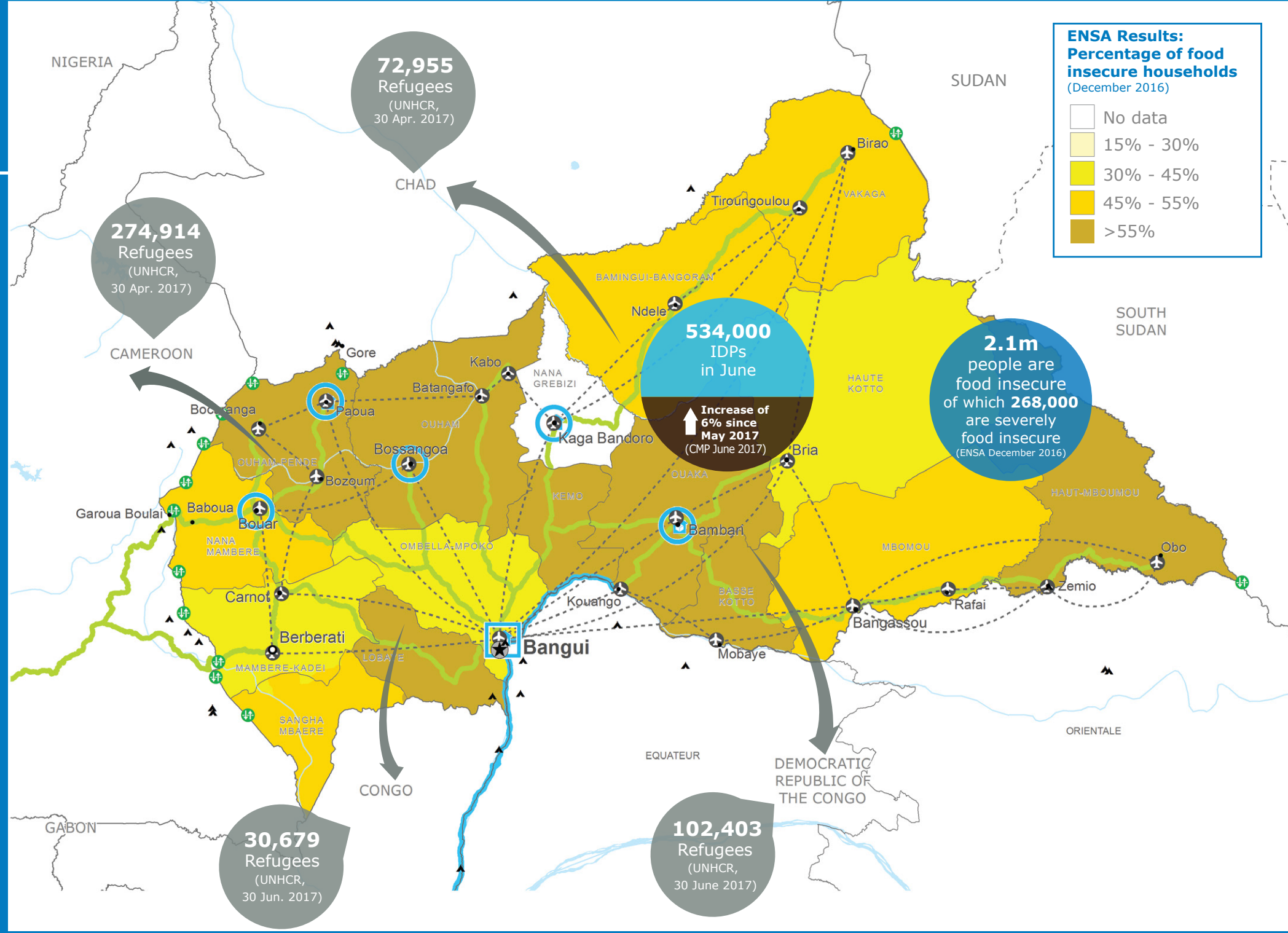
WFP LEVEL 2 EMERGENCY
SINCE 02 JUNE 2015

For more information, see the **SITUATION REPORT** and **COUNTRY BRIEF**
www.wfp.org/countries/central-african-republic

2A Regional Emergency Operation 200799
<http://documents.wfp.org/stellent/groups/public/documents/ep/WFP284303.pdf>

Produced by the WFP Operations Centre (OPSCEN) jointly with Country Office and Regional Bureau Dakar

This dashboard is based on best available information at the time of production. Future updates may vary as new information becomes available.



Sources: WFP, UNGIWG, GAUL, GLCSC, OCHA, UNHCR

The designations employed and the presentation of material in the map(s) do not imply the expression of any opinion on the part of WFP concerning the legal or constitutional status of any country, territory, city or sea, or concerning the delimitation of its frontiers or boundaries. © World Food Programme 2017

