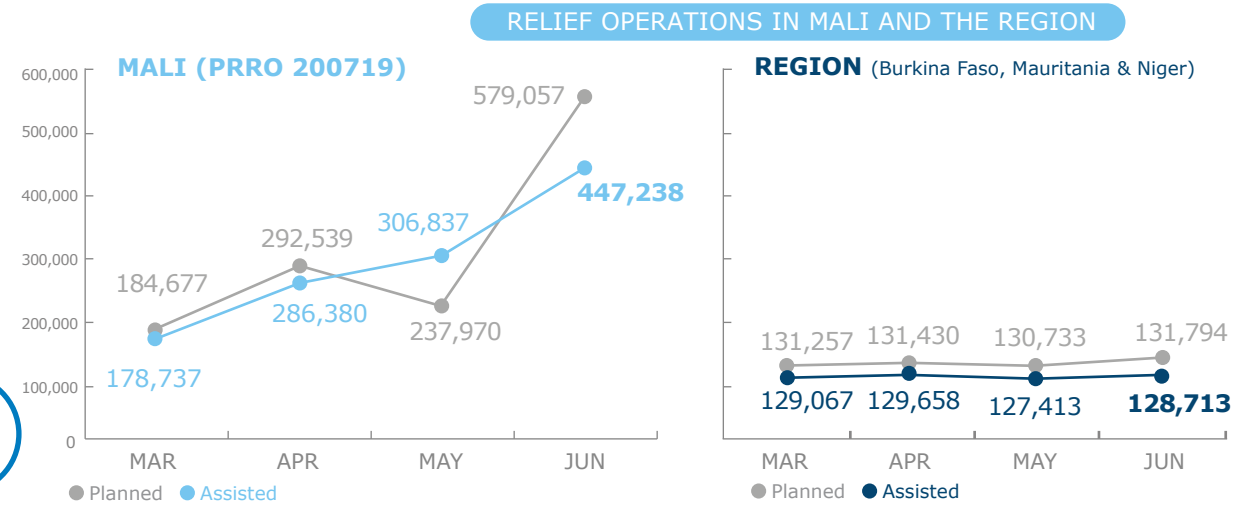
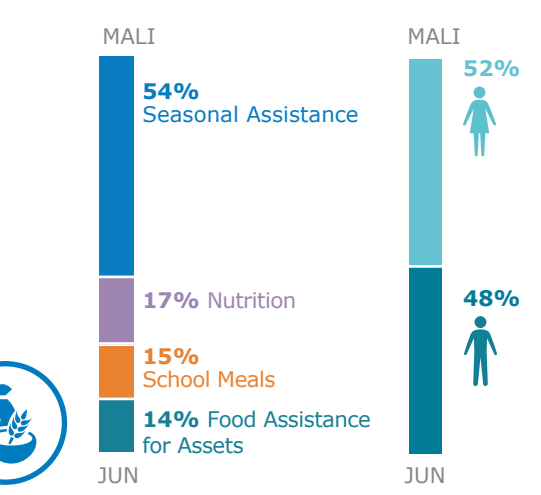


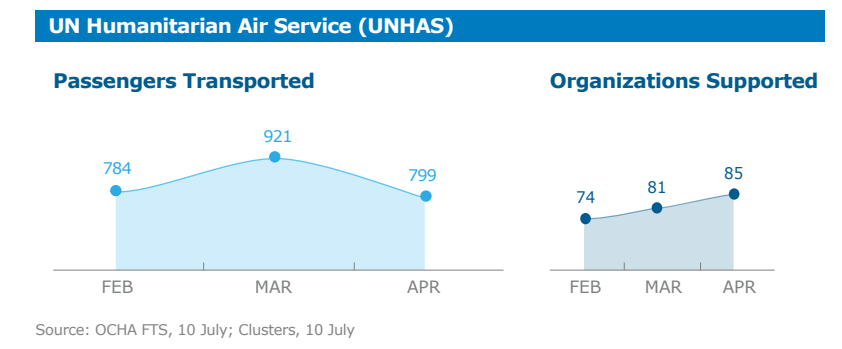
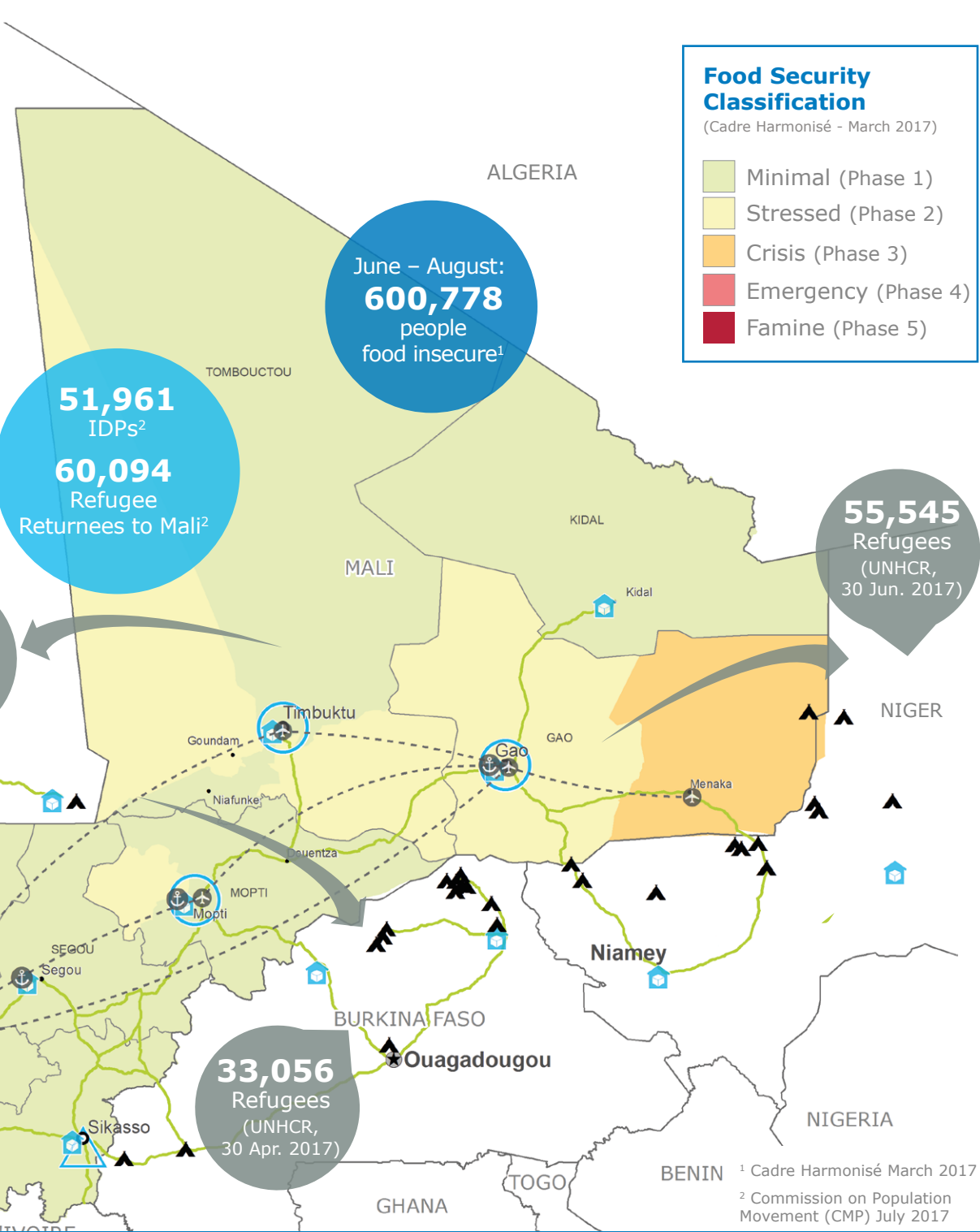
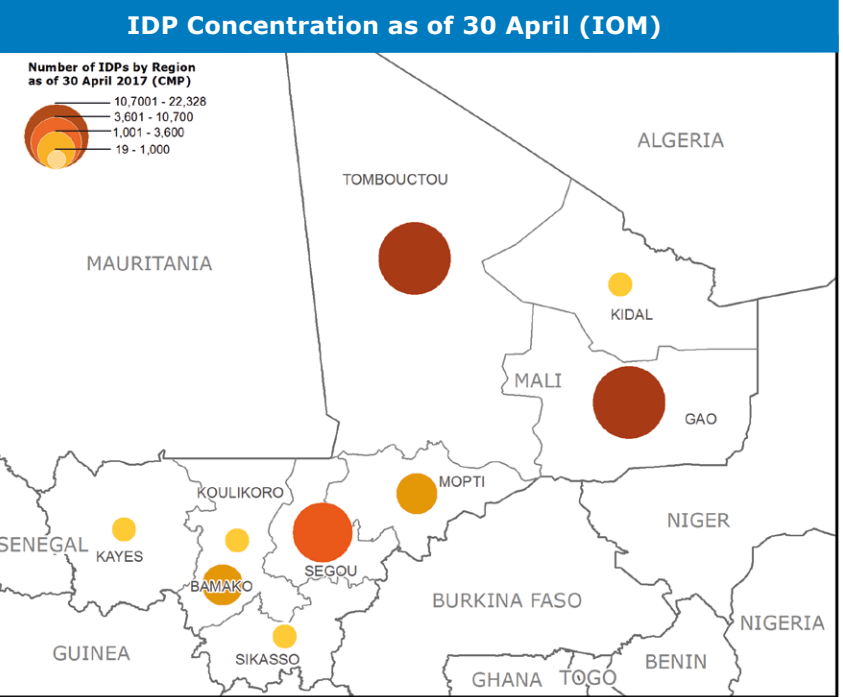
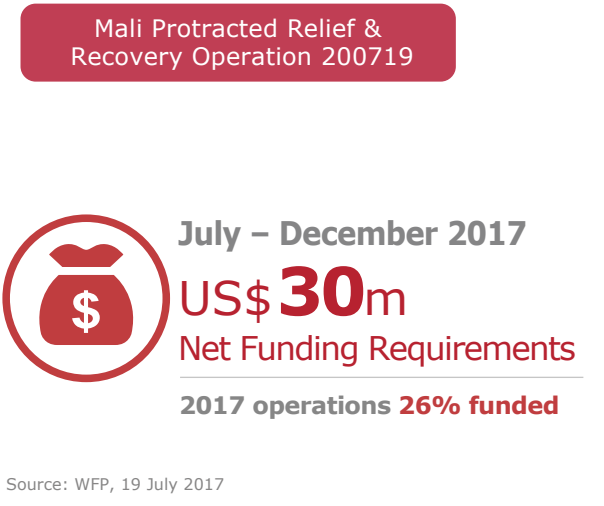
PEOPLE ASSISTED



OPERATIONAL PROFILE



FUNDING



**WFP LEVEL 2 EMERGENCY**  
 SINCE 12 JANUARY 2012

For more information, see the **SITUATION REPORT** and **COUNTRY BRIEF** [www.wfp.org/countries/mali](http://www.wfp.org/countries/mali)

**2A** RELIEF OPERATION 200719  
<http://documents.wfp.org/stellent/groups/public/documents/ep/WFP284303.pdf>

Produced by the WFP **Operations Centre (OPSCEN)** jointly with Country Office and Regional Bureau Dakar

This dashboard is based on best available information at the time of production. Future updates may vary as new information becomes available.

- Country Office
- Warehouse
- National Capital
- International boundary
- Sub Office
- UNHAS Connection
- Major Town
- Region boundary
- Field Office
- UNHAS Route
- Intermediate Town
- River
- Small Town
- Road Supply Route
- Surface Waterbody

Sources: WFP, UNGIWG, GAUL, GLCSC, OCHA, UNHCR, Cadre Harmonisé (March 2016). The designations employed and the presentation of material in the map(s) do not imply the expression of any opinion on the part of WFP concerning the legal or constitutional status of any country, territory, city or sea, or concerning the delimitation of its frontiers or boundaries. © World Food Programme 2017

