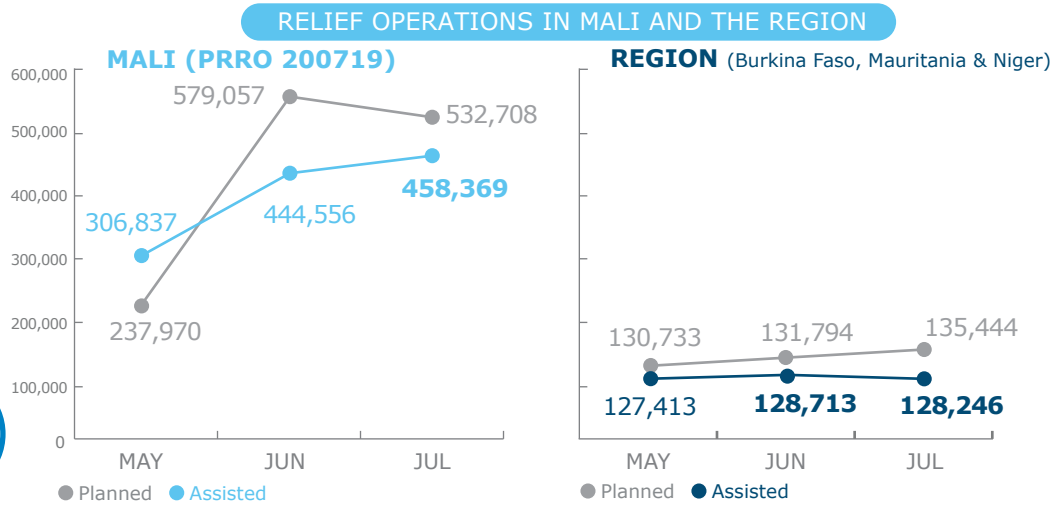
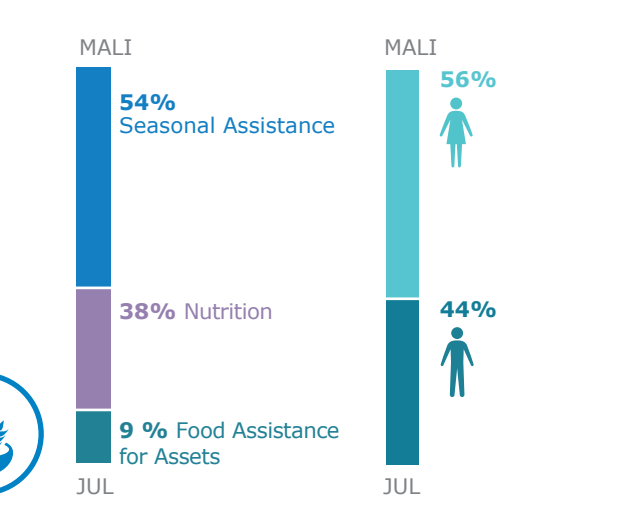


PEOPLE ASSISTED



OPERATIONAL PROFILE



FUNDING

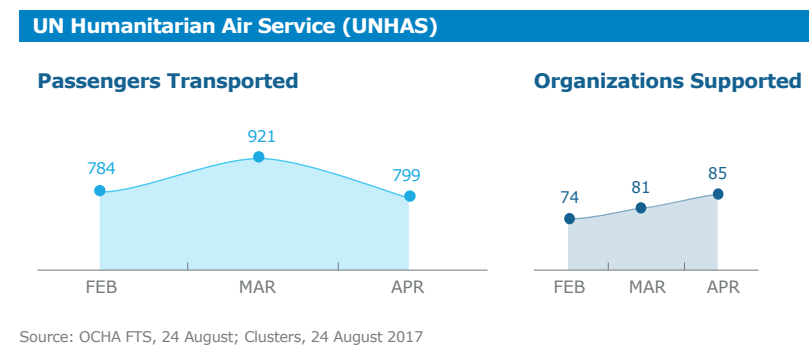
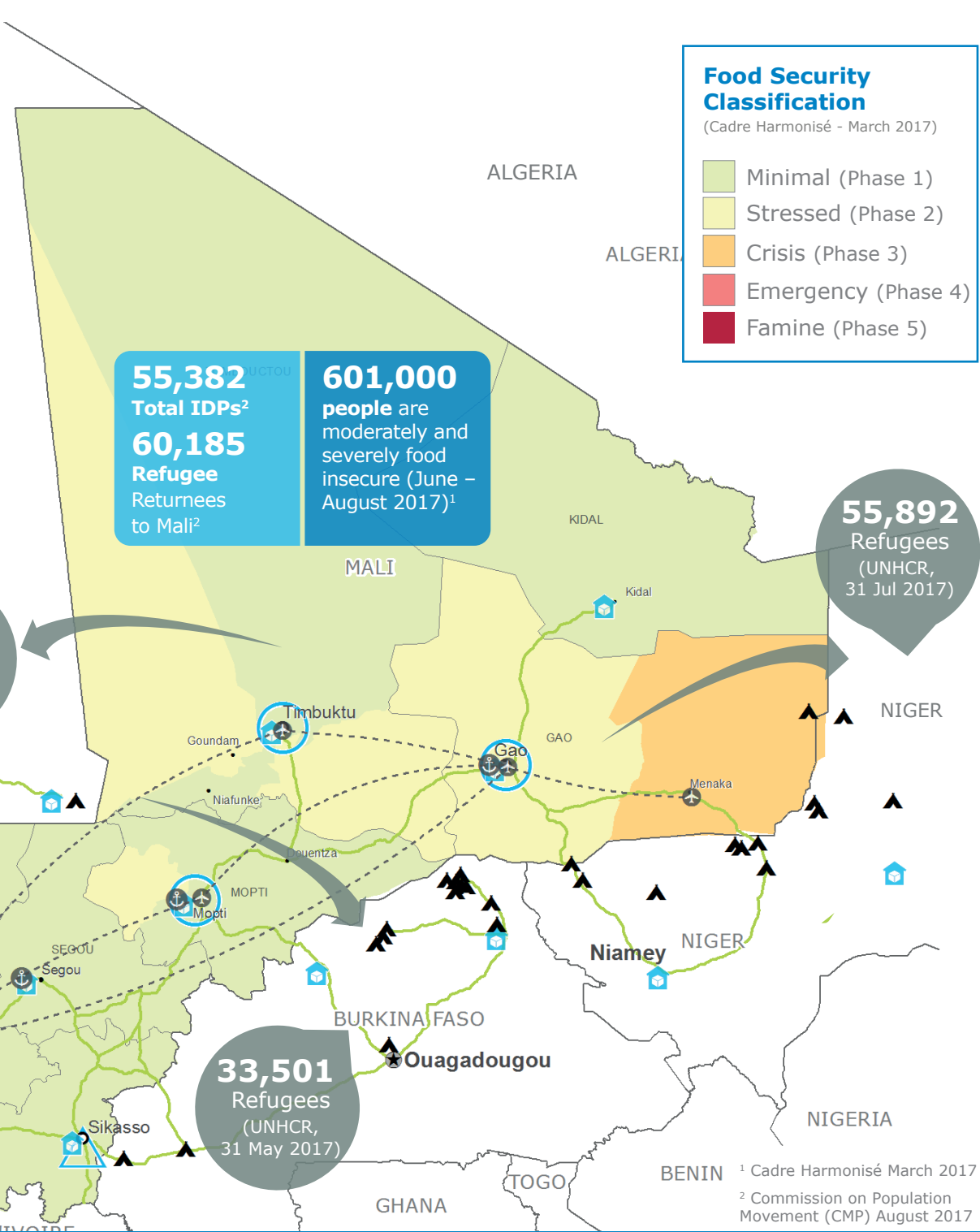
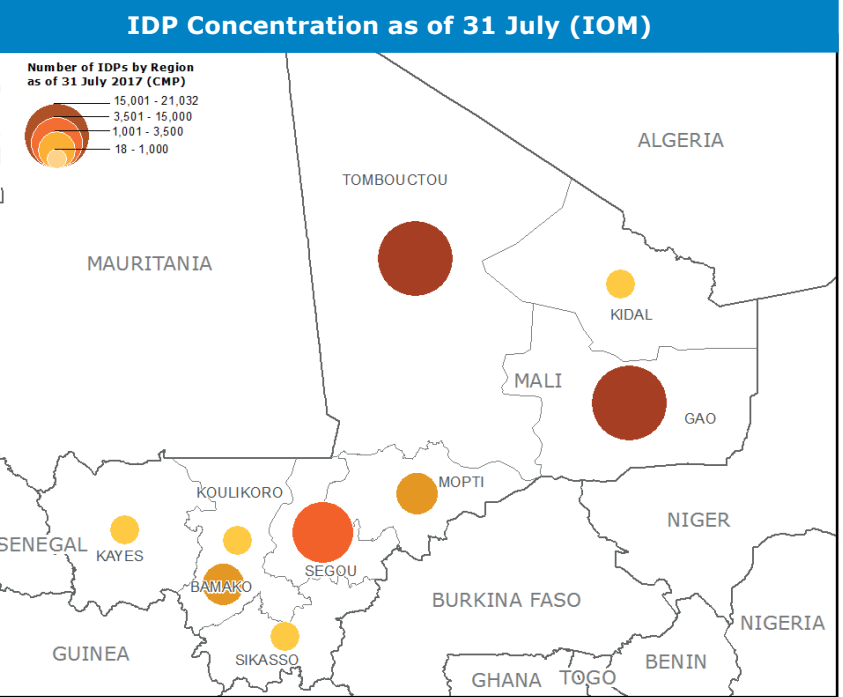
Mali Protracted Relief & Recovery Operation 200719

September 2017 – February 2018

US\$ 24.6m
Net Funding Requirements

2017 operations **26% funded**

Source: WFP, 18 August 2017



WFP LEVEL 2 EMERGENCY
SINCE 12 JANUARY 2012

For more information, see the **SITUATION REPORT** and **COUNTRY BRIEF** www.wfp.org/countries/mali

2A RELIEF OPERATION 200719
<http://documents.wfp.org/stellent/groups/public/documents/ep/WFP284303.pdf>

Produced by the WFP **Operations Centre (OPSCEN)** jointly with Country Office and Regional Bureau Dakar

This dashboard is based on best available information at the time of production. Future updates may vary as new information becomes available.

- Country Office
- Warehouse
- Sub Office
- UNHAS Connection
- Field Office
- UNHAS Route
- Road Supply Route
- National Capital
- Major Town
- Intermediate Town
- Small Town
- International boundary
- Region boundary
- River
- Surface Waterbody

Sources: WFP, UNGIWG, GAUL, GLCSC, OCHA, UNHCR, Cadre Harmonisé (March 2016). The designations employed and the presentation of material in the map(s) do not imply the expression of any opinion on the part of WFP concerning the legal or constitutional status of any country, territory, city or sea, or concerning the delimitation of its frontiers or boundaries. © World Food Programme 2017