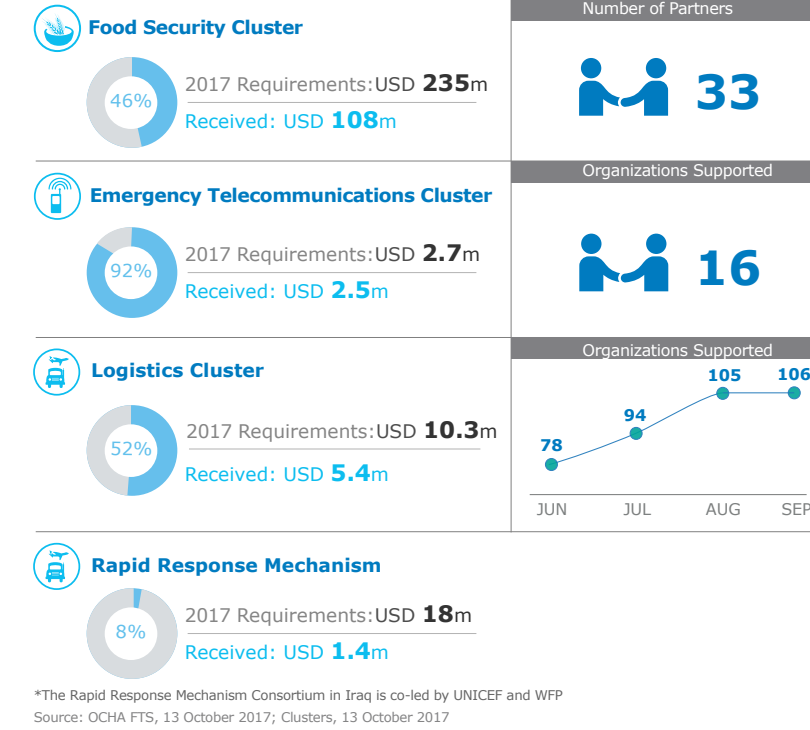


**1.8 million people** from Mosul and surrounding areas have been assisted since fighting in Mosul started in October 2016  
(WFP, 14 September 2017)

### WFP LED & CO-LED CLUSTERS



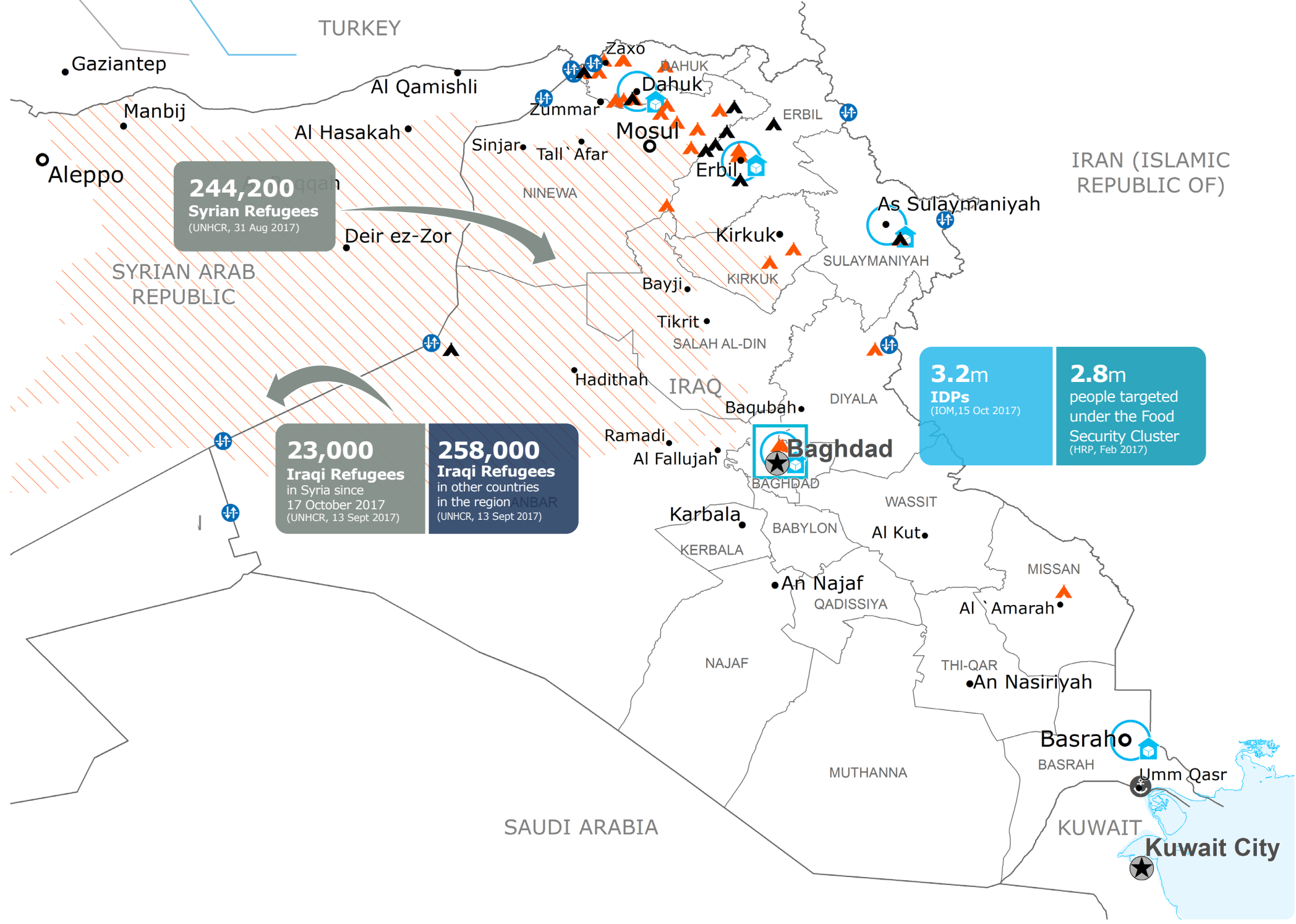
### WFP LEVEL 3 EMERGENCY SINCE 11 AUGUST 2014

IASC LEVEL 3 EMERGENCY SINCE 13 AUGUST 2014

For more information, see the **SITUATION REPORT** and **COUNTRY BRIEF** [www.wfp.org/countries/iraq](http://www.wfp.org/countries/iraq)

Produced by the WFP **Operations Centre (OPSCEN)** jointly with Country Office and Regional Bureau Cairo

This dashboard is based on best available information at the time of production. Future updates may vary as new information becomes available.



- Country Office
- Warehouse
- IDP Camp
- Restricted Access Area
- Sub Office
- Border Crossing Point
- Refugee Camp
- National Capital
- Major Town
- Intermediate Town
- Small Town
- International boundary
- Governorate Boundary
- River
- Surface Waterbody

Sources: WFP, UNGIWG, GAUL, GLCSC, OCHA, UNHCR, IOM, INSO  
The designations employed and the presentation of material in the map(s) do not imply the expression of any opinion on the part of WFP concerning the legal or constitutional status of any country, territory, city or sea, or concerning the delimitation of its frontiers or boundaries. © World Food Programme 2017