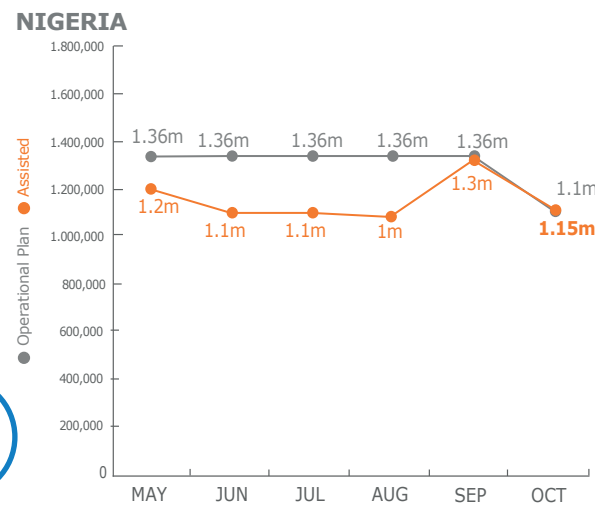


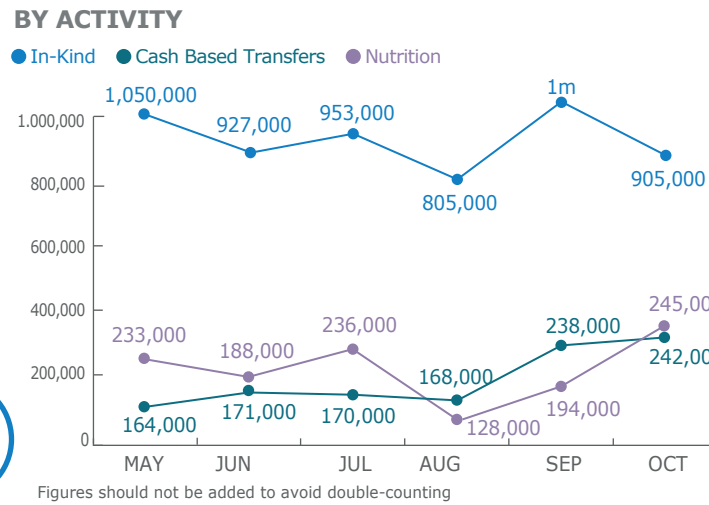
## PEOPLE ASSISTED



Emergency Operation 200777



## OPERATIONAL PROFILE



## FUNDING



Nigeria component of Regional Emergency Operation 200777

December 2017-May 2018

**US\$ 23m**

Net Funding Requirements

2017 operations **77% funded**

Source: WFP, 23 November 2017

PROJECT RESOURCES: COMMON SERVICES

Special Operation 200834  
UN Humanitarian Air Services  
(UNHAS) Nigeria

**100%**

2017 Required: US\$19m  
2017 Received: US\$19m

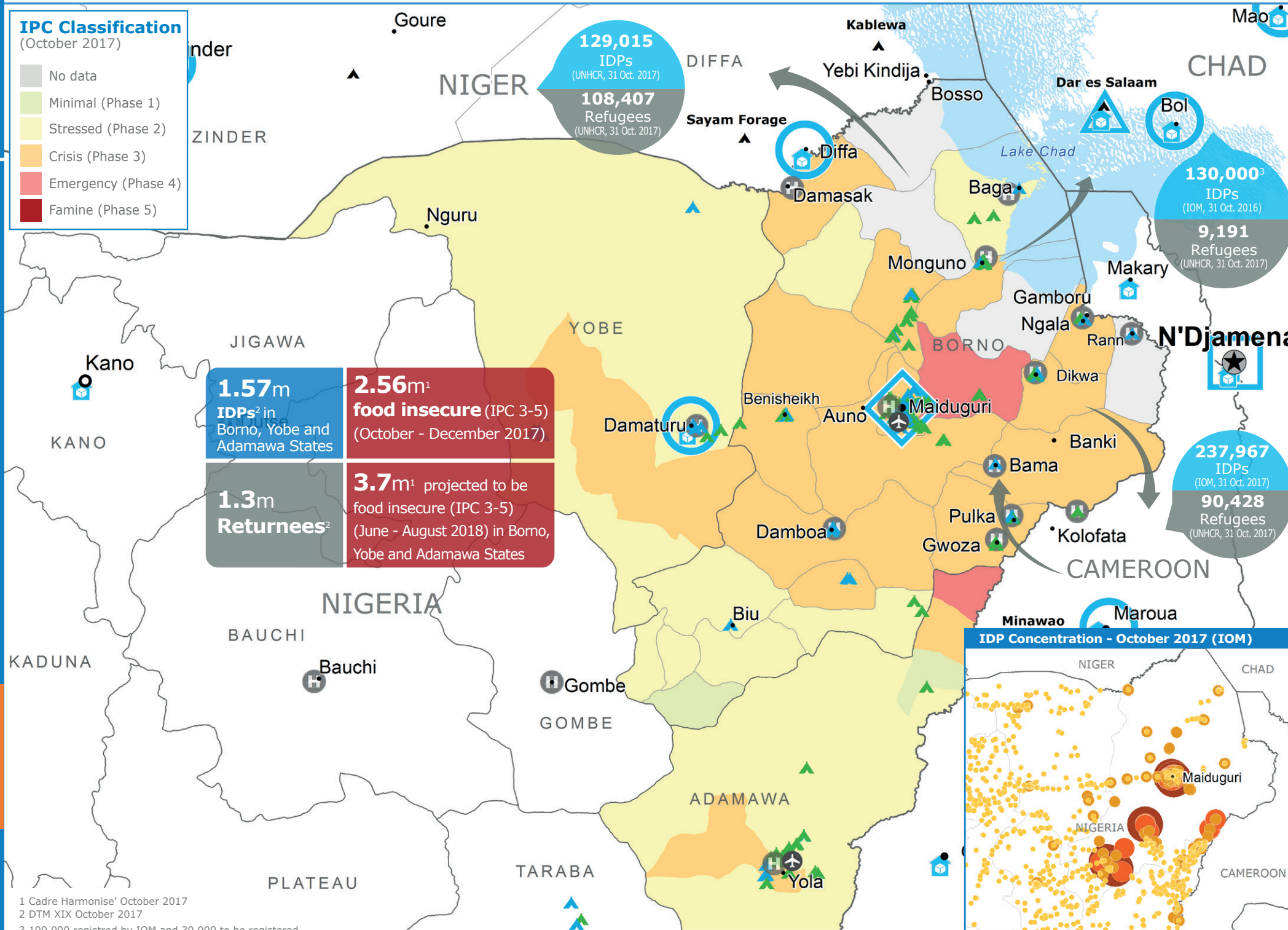
Special Operation 201032  
(Logistics and Emergency  
Telecommunication Sectors)

**100%**

2017 Required: US\$9m  
2017 Received: US\$9m

Source: WFP, 16 November 2017

## IPC Classification



1 Cadre Harmonise' October 2017  
2 DTM XIX October 2017  
3 100,000 registered by IOM and 30,000 to be registered

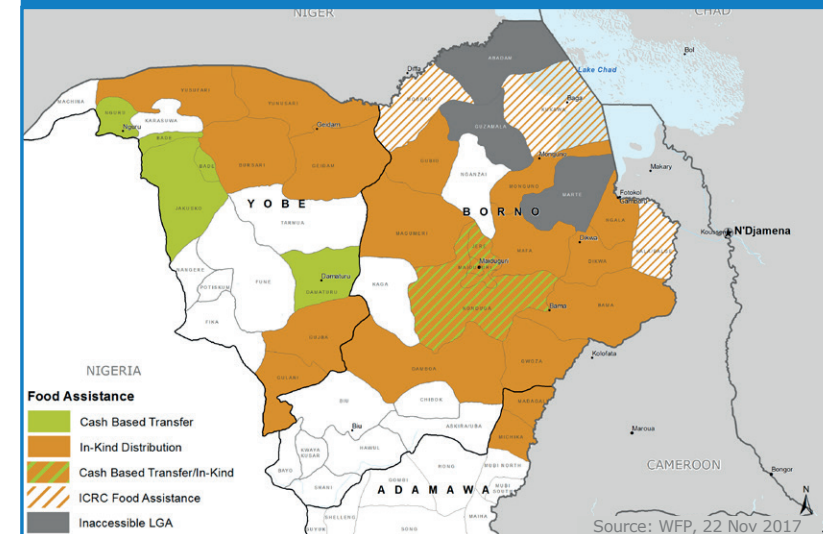


Sources: WFP, UNGIWG, GAUL, GLCSC, UNHCR, IOM. UNHCR Nigeria Displacement Dashboard June 2016

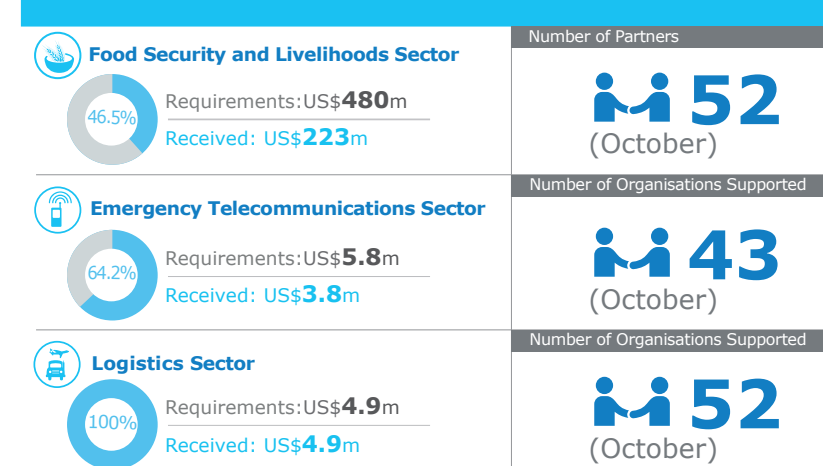
The designations employed and the presentation of material in the map(s) do not imply the expression of any opinion on the part of WFP concerning the legal or constitutional status of any country, territory, city or sea, or concerning the delimitation of its frontiers or boundaries.

© World Food Programme 2017

## WFP OPERATIONAL PRESENCE AND FOOD ASSISTANCE MODALITIES



## WFP LED & CO-LED SECTORS



## WFP LEVEL 3 EMERGENCY

SINCE 11 AUGUST 2016

For more information, see the **SITUATION REPORT** and **COUNTRY BRIEF** [www.wfp.org/countries/nigeria](http://www.wfp.org/countries/nigeria)

**2A** Regional Emergency Operation 200777  
[documents.wfp.org/stellent/groups/public/documents/ep/WFP284303.pdf](http://documents.wfp.org/stellent/groups/public/documents/ep/WFP284303.pdf)

Produced by the WFP **Operations Centre (OPSCEN)** jointly with Country Office and Regional Bureau Dakar

This dashboard is based on best available information at the time of production. Future updates may vary as new information becomes available.