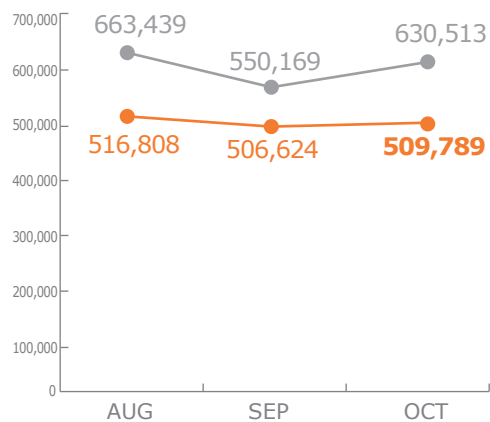


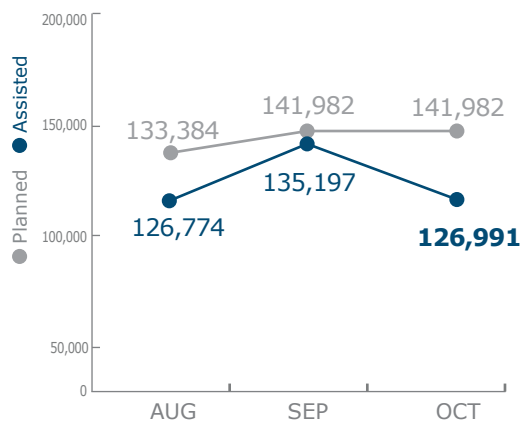
RELIEF OPERATIONS IN MALI AND THE REGION

PEOPLE ASSISTED

MALI (PRRO 200719)

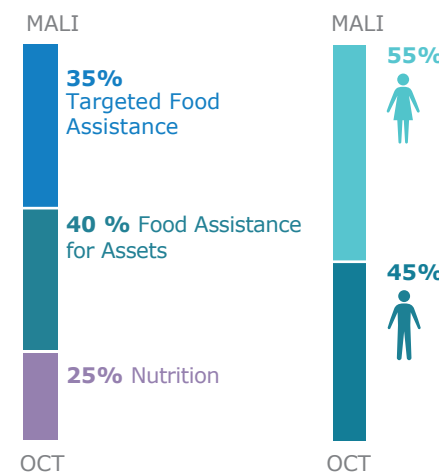


REGION (Burkina Faso, Mauritania & Niger)



Source: WFP, 21 November 2017

OPERATIONAL PROFILE



FUNDING

Mali Protracted Relief & Recovery Operation 200719

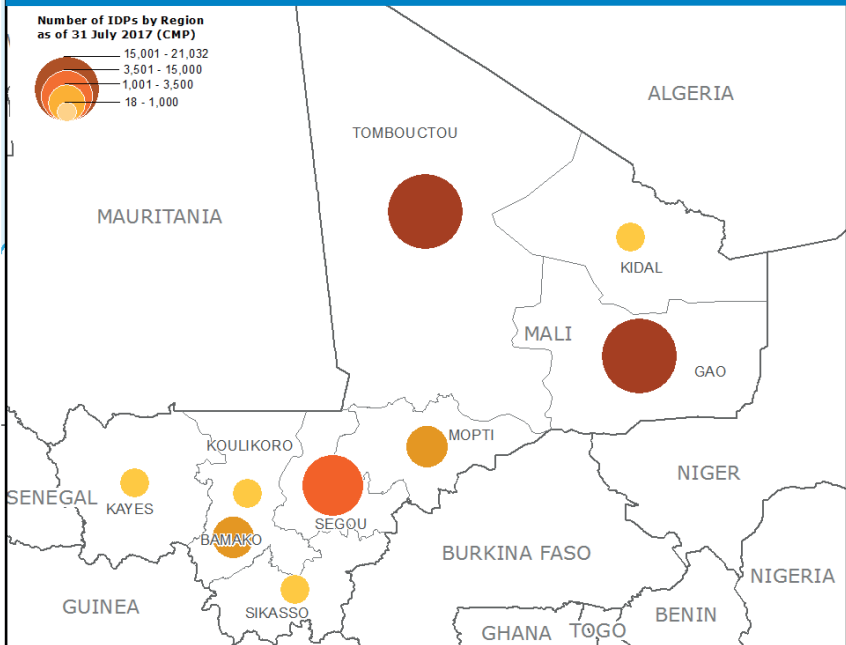
November 2017 – April 2018

US\$ 22m Net Funding Requirements

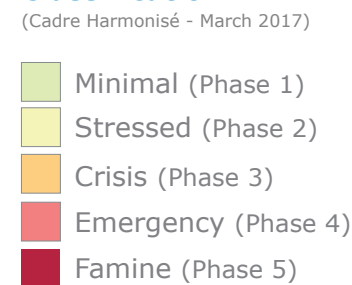
2017 operations **35% funded**

Source: WFP, 27 October 2017

IDP Concentration as of 31 July (IOM)



Food Security Classification



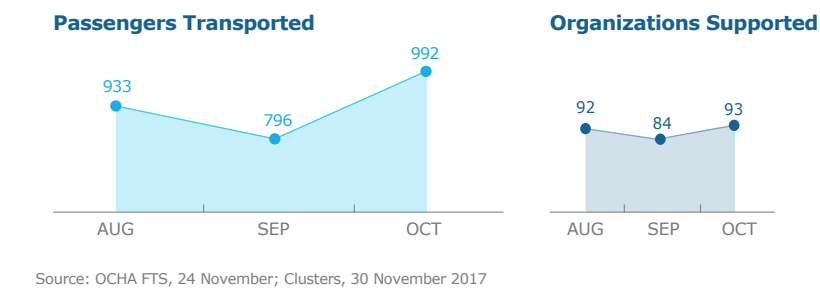
2017 PROJECT RESOURCES



WFP LED & CO-LED SECTORS



UN Humanitarian Air Service (UNHAS)



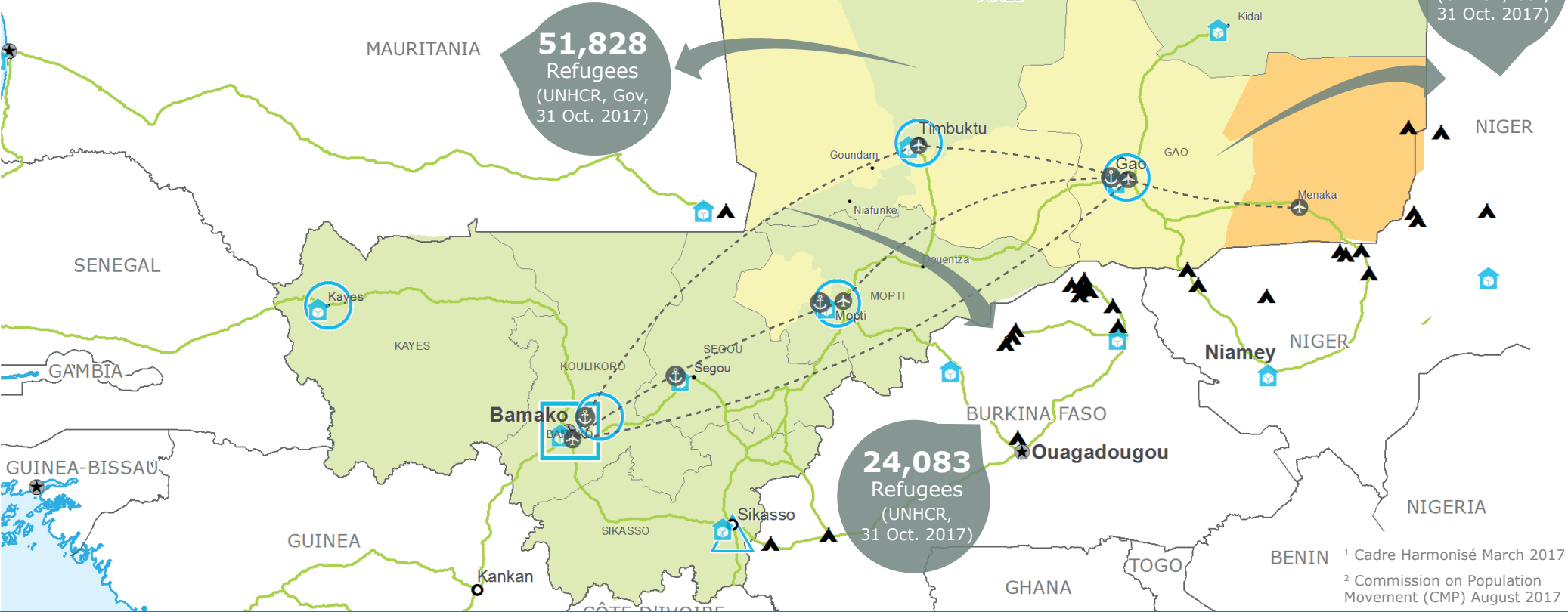
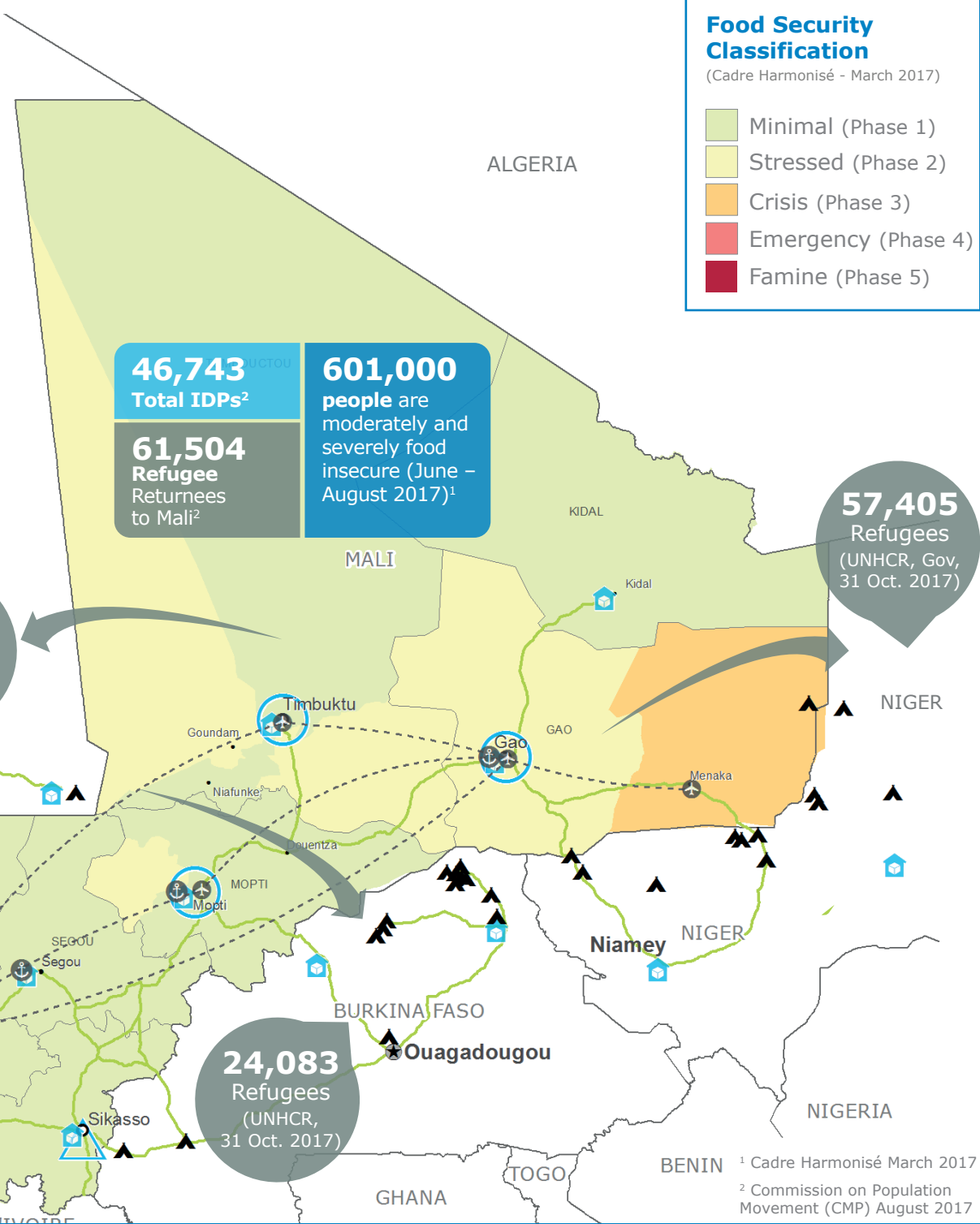
WFP LEVEL 2 EMERGENCY SINCE 12 JANUARY 2012

For more information, see the SITUATION REPORT and COUNTRY BRIEF www.wfp.org/countries/mali

2A RELIEF OPERATION 200719 <http://documents.wfp.org/stellent/groups/public/documents/ep/WFP284303.pdf>

Produced by the WFP Operations Centre (OPSCEN) jointly with Country Office and Regional Bureau Dakar

This dashboard is based on best available information at the time of production. Future updates may vary as new information becomes available.



- Country Office
- Warehouse
- National Capital
- International boundary
- Sub Office
- UNHAS Connection
- Major Town
- Region boundary
- Field Office
- UNHAS Route
- Intermediate Town
- River
- Small Town
- Road Supply Route
- Surface Waterbody

Sources: WFP, UNGIWG, GAUL, GLCSC, OCHA, UNHCR, Cadre Harmonisé (March 2017). The designations employed and the presentation of material in the map(s) do not imply the expression of any opinion on the part of WFP concerning the legal or constitutional status of any country, territory, city or sea, or concerning the delimitation of its frontiers or boundaries. © World Food Programme 2017