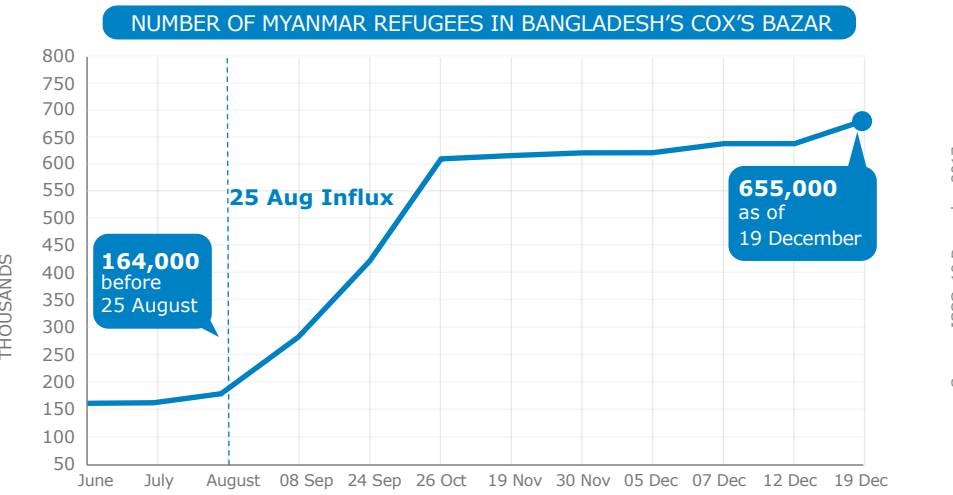
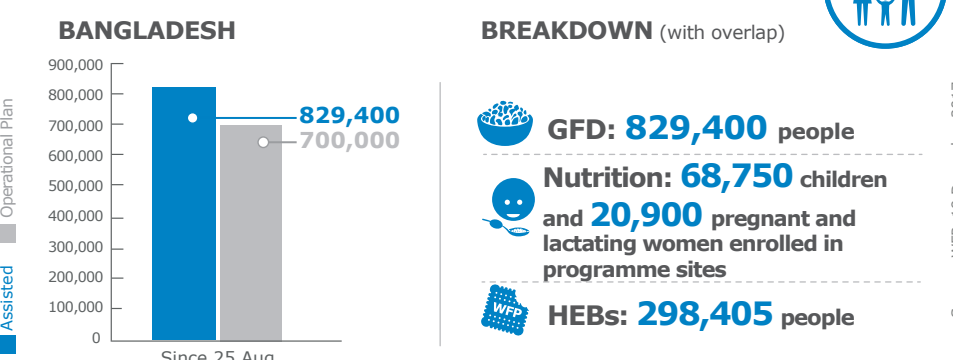


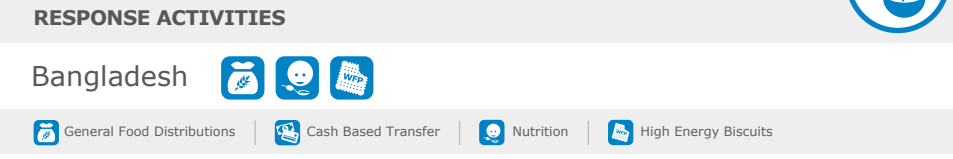
*Fluid movement makes the tracking of new arrivals challenging. Figures are triangulated estimates based on the visual observation of key informants. The new arrivals have not been verified at household level. In particular, the number of affected population in host communities remains unclear. Daily data for arrivals in host communities is not available. Data as of October 26, 2017. The dataset contains the location (lat/lon), type, and estimated population of the Undocumented Myanmar Nationals in and around Cox's Bazar, Bangladesh. Data should not be considered accurate headcounts for the number of people in each location. Rather they should be rough estimates to enable response planning for this rapidly changing and fluid situation. Source: Inter-Sector Coordination Group in Cox's Bazar.



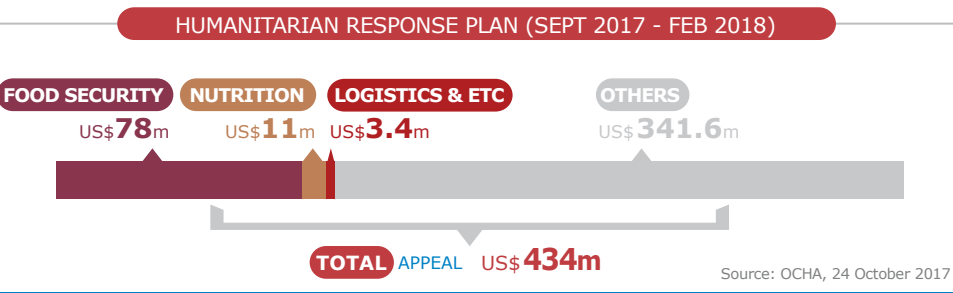
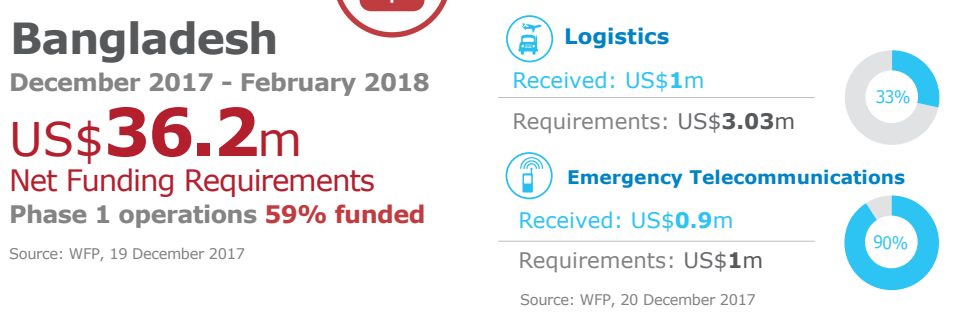
PEOPLE ASSISTED



OPERATIONAL PROFILE



FUNDING



WFP LEVEL 3 EMERGENCY

SINCE 22 SEPTEMBER 2017

For more information, see the **SITUATION REPORT** and **COUNTRY BRIEF**

Produced by the WFP **Operations Centre (OPSCEN)** jointly with Country Office and Regional Bureau Bangkok

This dashboard is based on best available information at the time of production. Future updates may vary as new information becomes available.



Sources: WFP, UNGIWG, GAUL, GLCSC, OCHA, UNHCR, IPC, ISCG

The designations employed and the presentation of material in the map(s) do not imply the expression of any opinion on the part of WFP concerning the legal or constitutional status of any country, territory, city or sea, or concerning the delimitation of its frontiers or boundaries. © World Food Programme 2017