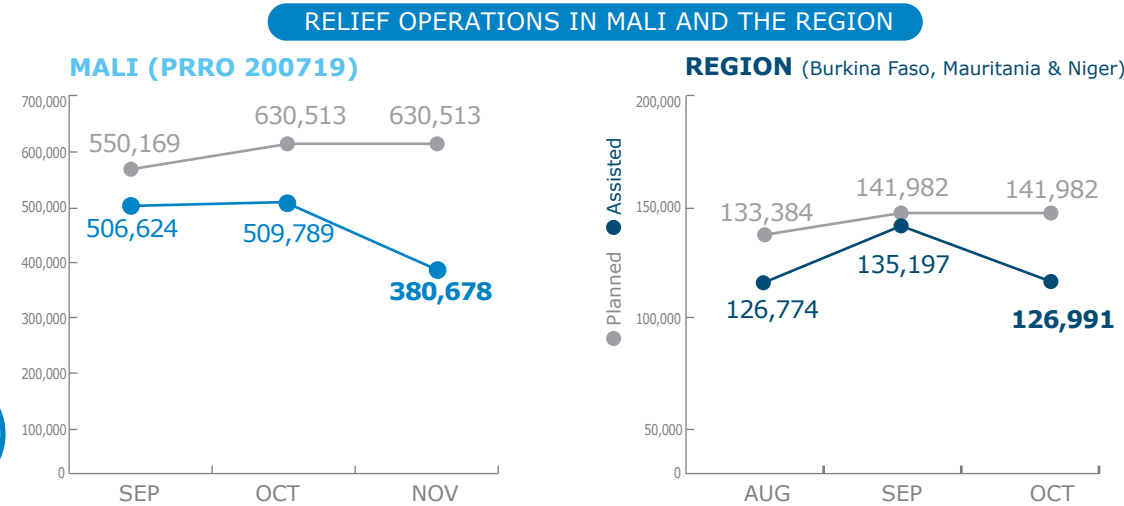
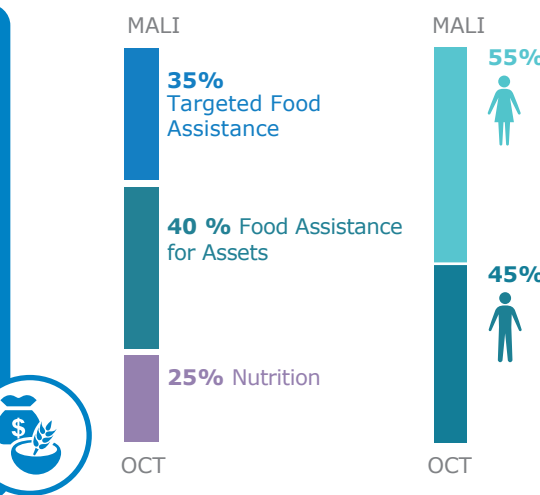


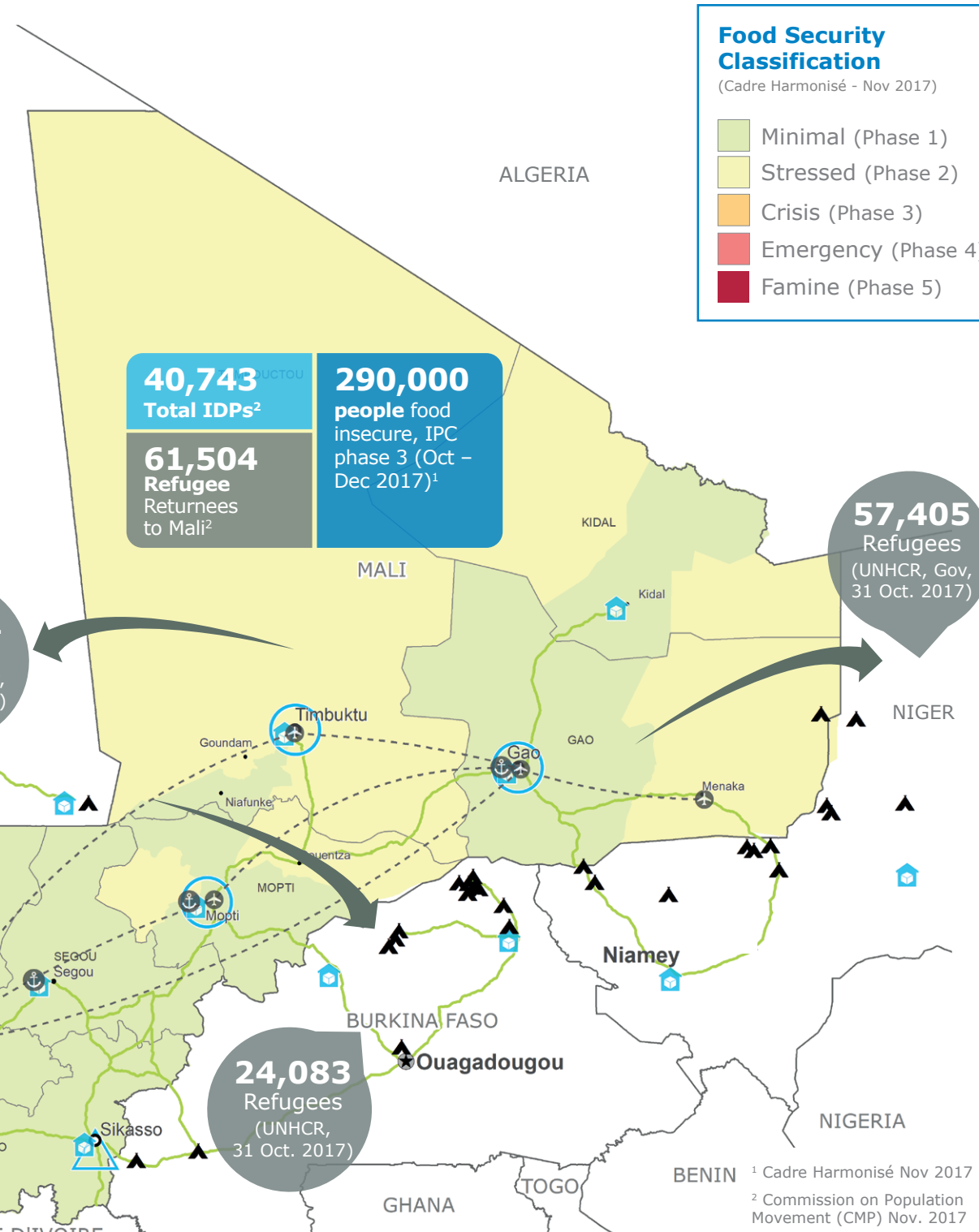
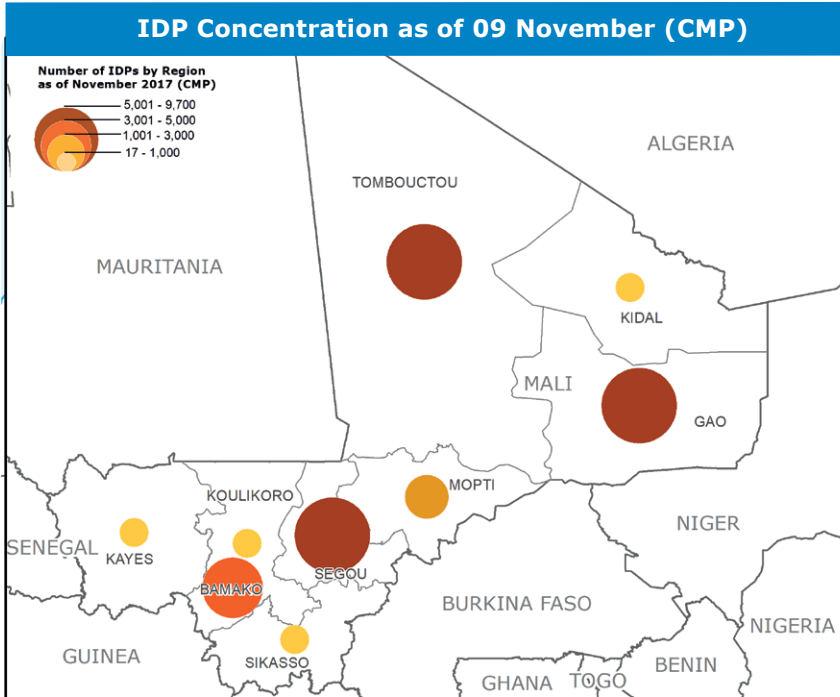
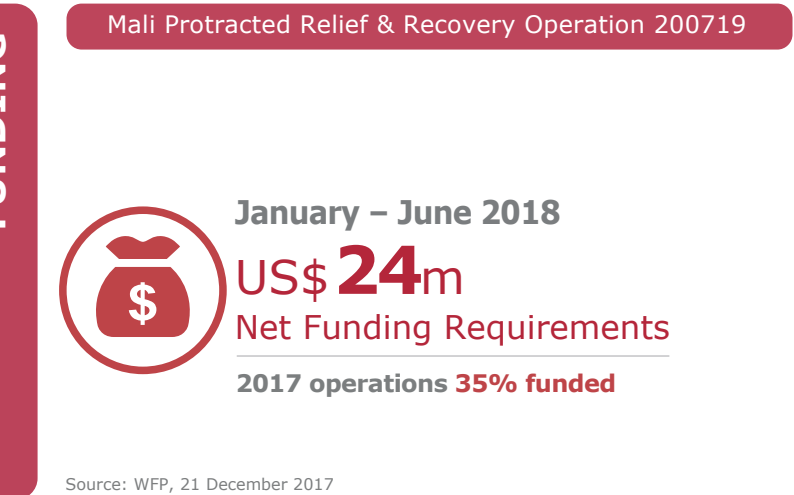
PEOPLE ASSISTED



OPERATIONAL PROFILE



FUNDING



2017 PROJECT RESOURCES

Special Operation UN Humanitarian Air Service (UNHAS) 201047

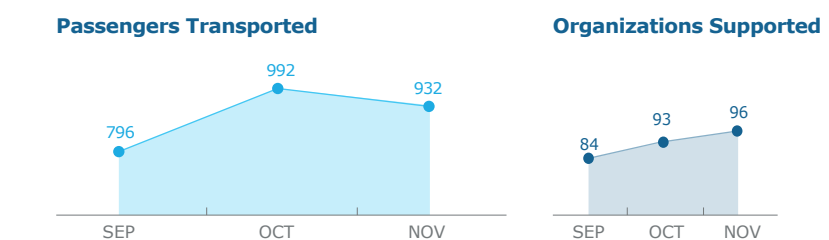


Source: WFP, 21 December 2017

WFP LED & CO-LED SECTORS



UN Humanitarian Air Service (UNHAS)



WFP LEVEL 2 EMERGENCY

SINCE 12 JANUARY 2012

For more information, see the **SITUATION REPORT** and **COUNTRY BRIEF** www.wfp.org/countries/mali

2A RELIEF OPERATION 200719

<http://documents.wfp.org/stellent/groups/public/documents/ep/WFP284303.pdf>

Produced by the WFP **Operations Centre (OPSCEN)** jointly with Country Office and Regional Bureau Dakar

This dashboard is based on best available information at the time of production. Future updates may vary as new information becomes available.

Sources: WFP, UNGIWG, GAUL, GLCSC, OCHA, UNHCR, Cadre Harmonisé (Nov 2017). The designations employed and the presentation of material in the map(s) do not imply the expression of any opinion on the part of WFP concerning the legal or constitutional status of any country, territory, city or sea, or concerning the delimitation of its frontiers or boundaries. © World Food Programme 2017