

## IR-EMOP Project Document-Delegation of Authority to Country Directors

**TO:** Mr. Calum Gardner, Chief, RMBB

**DATE:**

**FROM:** Ms. Pippa Bradford, Country Director, Nepal

**PAGE 1 OF 4**

(Information Note- 2 pages; EMOP Budget- 2 pages)

**CC:** Mr. David Kaatrud, Regional Director, RBB

Mr. Stefano Porretti, Director of Emergencies, OSE

Mr. James Harvey, Chief of Staff

[Advance Financing Mailbox--wfp.advancefinancing@wfp.org]

### IMMEDIATE RESPONSE EMERGENCY OPERATION NEPAL, EMOP NO. 200983, KARNALI DROUGHT RESPONSE PROJECT DOCUMENT

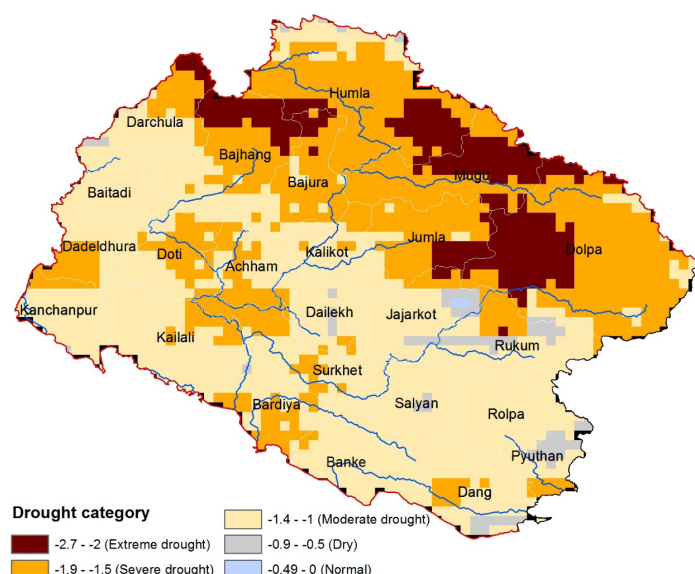
#### PART 1: INFORMATION NOTE

##### NATURE OF EMERGENCY:

**Location:** Nepal, Karnali region (Dolpa, Jumla, Kalikot, Mugu and Humla districts).

**Cause:** Two successive poor monsoon seasons (2014 and 2015) led to consecutive poor summer harvests (Oct-Nov), while failure of the rains during the winter cropping season led to a failed winter harvest in the first quarter of 2016. The economic blockade with India between September 2015 and February 2016 resulted in high transport prices and higher than normal food and commodity prices (now as much as double those in markets and the hills and plains) which magnified the impact of the drought on household food security and incomes.

**Effects:** Severe drought in affected region (see map), resulting in an acute food crisis.



Map 1: Standardized Precipitation Index in the Mid- and Far-Western Regions of Nepal (Source: ICIMOD 2016)

**Total numbers affected and in need of emergency food aid:** An estimated 30,000 households (150,000 people in 59 VDCs) in the five Karnali districts and Bajura are in need of food and nutrition assistance – estimate based on VAM/NeKSAP data.

#### **WFP IR EMOP:**

##### **Justification for an immediate response and expected impact:**

The Karnali zone is the poorest and most remote of Nepal's fourteen administrative zones. It has among the lowest human development index values and the prevalence of stunting, at 64 percent, is the highest in the country.

Roads suitable for motor transport are few; most areas are only accessible using mules or porters; market penetration is extremely limited; agriculture is mostly subsistence; the major alternative income sources are the collection and sale of wild medicinal plants and out-migration to India (seasonal labour).

According to NeKSAP, recurrent harvest failures and the economic blockade have resulted in very low household food stocks, severely depleted household savings, the sale of productive household assets and higher than normal seasonal out-migration by economically active adult males. Where food is available for purchase in the market (not the case in most areas because of poor market penetration) extreme poverty means that many households do not have sufficient purchasing power to buy it.

The Government of Nepal (GON) is leading the pre-monsoon response. It diverted 3,000MT of rice, originally intended for post-earthquake assistance, from its warehouses to the Karnali region. The distribution of this rice to the estimated 30,000 poorest households will be carried out by district level local government bodies using the food for work and/or assets modality.

As a preventative measure to reach the most nutritionally vulnerable population during the monsoon before conditional community works projects can start, **the GON has requested WFP to assist in implementing a** blanket supplementary feeding program in Jumla and Mugu districts using supercereal provided by the Ministry of Health – now ready for transport and distribution following completed Quality and Quantity control tests.

WFP will transport the supercereal from Government regional warehouses to Ministry of Health health-posts located throughout Mugu and Jumla and support the distribution at regular clinics through already identified nutrition NGO partners. The clinics also include ante-natal care counselling for pregnant women; post-natal care for nursing women; and growth monitoring for children. WFP's response will be implemented in close coordination with UNICEF and the Nutrition Cluster as part of a holistic package of nutrition interventions.

**Duration of assistance (maximum three months):** 1 June to 31 Aug 2016

##### **Number of beneficiaries and location:**

- Estimated 21,335 beneficiaries (4,792 pregnant and lactating women (PLW) and 16,543 children 6-59 months old).
- All vulnerable communities of Jumla and Mugu districts.

**Food basket composition and ration levels:** Three (3) kgs of Supercereal per month per beneficiary.

**Total food aid requirements (MT):** 192 MT for 3 months, to be purchased and supplied by the Ministry of Health (GON).

**Mode of implementation:** Blanket supplementary feeding programme through Ministry of Health clinics.

**Post-monsoon Response:** WFP Nepal CO will follow up this IR EMOP with an EMOP which will cover the period from the end of the monsoon to the next harvest, i.e. September – December 2016. It will include an extension of the blanket supplementary feeding program and address acute household food needs through conditional cash and/or food operations.

## PART 2: EMOP BUDGET

<b>Cost Components</b>			<b>USD</b>
<b>Food Tool</b>	<b>MT</b>	<b>Rate/mt</b>	
<i>Super cereal with sugar</i>	192	800	153,600
<b>Total Food Transfers</b>	192		<b>153,600</b>
<b>External Transport</b>			
<b>LTSH</b>		405	<b>77,760</b>
<b>ODOC Food</b>		166.25	<b>31,920</b>
<i>ODOC planned needs are to cover FLA costs for already identified nutrition NGO partners</i>			
<b>Total Food DOC</b>			<b>263,280</b>
<b>Capacity Development &amp; Augmentation Tool</b>			<b>0</b>
NA			
<b>Total CD&amp;A DOC</b>			<b>\$</b>
Total Direct Operating Costs (DOC)			
<b>Direct Support Cost (DSC)</b>			<b>64,543</b>
<i>DSC is needed mainly to cover the costs of staff on TDY and related travel for 3 months.</i>			
Total WFP direct project costs			327,823
<b>Indirect Support Costs (ISC)</b>	7%		<b>22,948</b>

## PART 3: EMOP APPROVAL

- 1) IRA funding is available to cover EMOP budget (*only associated costs amounting to US\$197,171 to be twinned with the GoN in kind contribution*)

Chief, RMBB: [Name & Signature], Date: --/--/----

- 2) EMOP is approved

Country Director, [Country]: [Name & Signature], Date: --/--/----

or

Regional Director, RB@: [Name & Signature], Date: --/--/----

or

Director of Emergencies: [Name & Signature], Date: --/--/----



---

## Annex 1 – Budget Summary