

Informal Cross Border Food Trade in Southern Africa

Inside this issue:

| | |
|--|---|
| Summary | 1 |
| Summary of Maize trade flows | 2 |
| Summary of rice trade flows | 5 |
| Summary of bean trade flows | 6 |
| Annex 1: Historical summary tables and Map | 7 |

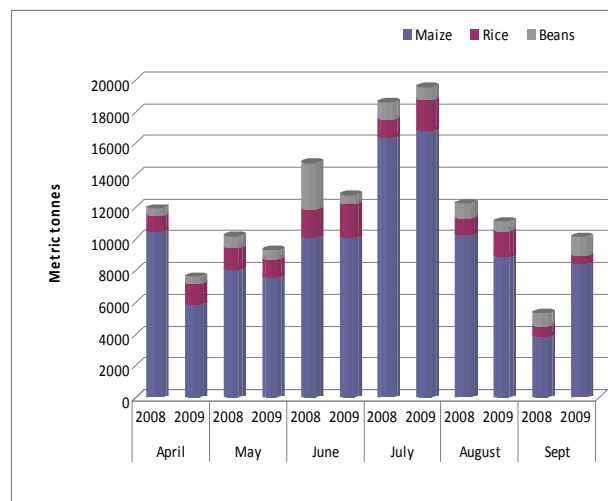
Issue 54

September 2009

Summary

- Total monthly volumes of informally traded maize, rice and beans continue to decline which is typical for this time of the year when most farmers begin to run out of surplus stocks. However, trade patterns remain unchanged with Mozambique and Zambia being the major source countries while Malawi, DRC and Zimbabwe remain net importers.
- Maize remains the most traded commodity captured through the system underlining its importance as a main staple in the monitored countries. By the end of September, maize trade accounted for 82 percent of the total informal trade captured since the beginning of the current marketing year.
- September nominal maize grain prices increased at most border points; ranging from 9 percent at Muloza border point (Mozambique/Malawi) to 118 percent at Machipanda border point (Mozambique/Zimbabwe). However, September 2009 nominal maize prices are lower than those observed at the same time last year; a sign of improved availability at most monitored sites.

Figure 1: Maize, rice and bean trade volumes - April to September 2008 and 2009



To date, there has been a notable decline in total traded volumes of maize, rice and beans since July 2009 when total trade was at its peak at 19,536 MT. In August, traded volumes declined by 43 percent to 11,080 MT, and further declined by 9 percent in September 2009, to 10,111 MT. This declining trend is expected to continue till the next harvest as on farm surplus stocks are increasingly drawn down both from own consumption and through trade. Informal maize and rice trade fell by 5 and 70 percent respectively in September 2009 compared to the August figures. On the other hand, bean trade almost doubled during the same period - increasing by 48 percent. Meanwhile, maize trade continues to dominate informal cross border trade, accounting for 82 percent of informal trade

captured since the beginning of the current marketing year (Table 1). The cumulative volume of maize trade from April to September is down 28 percent from the 59,145 MT recorded in 2008 to 57,496 MT captured this year (Table 2). This is attributable to the improved maize harvests realised by many countries this year compared to last year, which has reduced the demand for cross border trade due to adequate local availability.

| | Apr 09 | May 09 | Jun 09 | Jul 09 | Aug 09 | Sep 09 | Total |
|--------------------------|--------|--------|--------|--------|--------|--------|--------|
| Maize | 5,853 | 7,505 | 10,051 | 16,772 | 8,839 | 8,476 | 57,496 |
| Rice | 1,300 | 1,135 | 2,157 | 1,939 | 1,652 | 498 | 8,680 |
| Beans | 457 | 596 | 646 | 824 | 589 | 1,137 | 4,249 |
| All commodity Total (MT) | | | | | | | 70,425 |

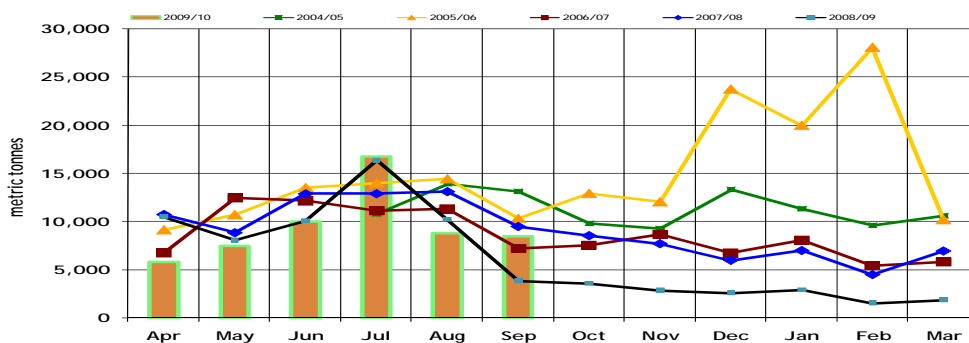


A Technical Steering Committee (TSC) of the Cross Border Food Trade Monitoring Initiative, with funding from USAID and WFP, has prepared this report based on data collected by a network of border monitors based at selected border points. The border monitors record data on a daily basis, and transmit it to a central location every week for collation and analysis. Currently, the informal cross border trade monitoring system includes 29 borders, with new borders being added as necessary. Data from borders surrounding Malawi are collected

and managed by FEWS NET and WFP Malawi, while the rest of the borders are managed by the TSC. Address comments/suggestions to the following e-mail addresses: pmdladla@fews.net, itarakidzwa@fews.net; or eric.kenefick@wfp.org

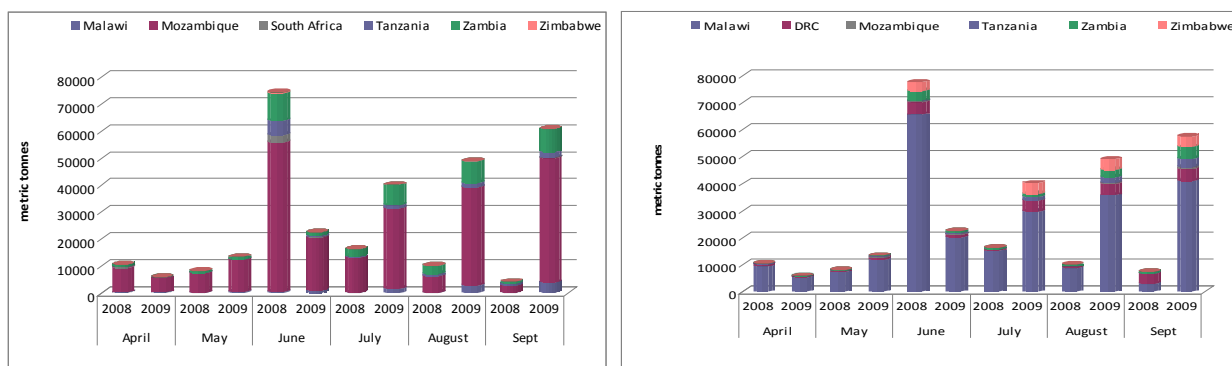
Summary of Maize trade flows

Figure 2: Recorded Volumes of Informal Cross Border MAIZE Trade—2004/05 to 2009/10



The recorded traded volumes of maize were almost the same for the months of August and September, a pattern last observed in 2004/05 consumption year, which was an equally good year. Meanwhile, informal maize trade flows between Mozambique and Malawi remain high and dominate the informal cross border trade captured through the monitoring system (Figure 3). This is partly due to the price differentials between the two countries that act as an incentive for private traders to move grain across the border into Malawi where maize prices are higher. The recorded average maize prices in Malawi (destination) for September 2009 were USD 0.30/kg while in Mozambique (source) it remained lower at USD 0.27/kg. Both prices at source and destination were above the August figures by 10 and 9 percent, respectively showing an upward trend in prices, which is normal for this time of the year (Table 3). Maize prices increase seasonally as the hunger season approaches in October/November up until March/April the following year. However, the onset and duration of the hunger season varies among countries depending on the size of the previous year’s harvest.

Figure 3: April–Aug 2009 monthly MAIZE by (a) imports/destination and (b) exports/source compared to April-Aug 2008



Mozambique, the major maize exporter with the highest share of total maize export of 74.2 percent is followed by Zambia (15.2 percent) and Malawi (6.6 percent). South Africa’s export share in September 2009 remained insignificant at 0.2 percent. It should be noted that this low figure could be a result of inadequate capture of trade flows at Messina Border post by the monitors. A pending supervisory visit (In November 2009) to this border post is expected to shed more light. In terms of import volumes, Malawi remains the major maize importer with the highest import share of 71.2 percent, followed by DRC (8.0 percent), Zambia (7.6 percent), Zimbabwe (6.8 percent), and Tanzania (5.4 percent).

Maize Meal Trade Flows: Table 3 summarizes maize meal flows since the beginning of the current marketing year. The actual volumes of traded maize meal are on the decline, with the September volume down by 27 percent from 234 MT in August to 169 MT. About 75 percent of traded maize meal usually comes from Zambia into DRC, a major maize meal importer. South Africa’s September informal maize meal export share to Zimbabwe remained the lowest at 3 MT. For the month of September, DRC remains the major maize meal importer with total import share of 74 percent, followed by Zimbabwe (19.2 percent), and Mozambique and Zambia with 3.3 percent each.

Table 1: Informal cross border MAIZE trade by source and destination country

| Source | Destination | Total 05/06 Season | Total 06/07 Season | Total 07/08 Season | Total 08/09 Season | Sep 08 | Sep 09 | Cumulative Apr- Sep 08/09 | Cumulative Apr- Sep 09/10 |
|--------------------------|-------------|--------------------------|--------------------------|--------------------------|--------------------------|--------------|--------------|---------------------------------|---------------------------------|
| Malawi | Mozambique | 133 | 591 | 3,755 | 203 | 13 | 342 | 132 | 600 |
| Malawi | Tanzania | 944 | 2,928 | 1,581 | 239 | 0 | 860 | 223 | 3,003 |
| Malawi | Zambia | 81 | 202 | 1,779 | 129 | 0 | 1 | 97 | 176 |
| Mozambique | Malawi | 71,218 | 77,394 | 56,078 | 54,223 | 2,482 | 5,078 | 46,540 | 40,532 |
| Mozambique | Zambia | 49 | 1,269 | 2,113 | 865 | 87 | 1,073 | 776 | 2,147 |
| Mozambique | Zimbabwe | 5 | 2,085 | 11 | 178 | 12 | 0 | 98 | 10 |
| South Africa | Zimbabwe | 1,688 | 49 | 47 | 2,663 | 3 | 5 | 285 | 227 |
| Tanzania | Malawi | 84,862 | 1,888 | 1,073 | 2,910 | 45 | 0 | 627 | 0 |
| Tanzania | Zambia | 13,556 | 6,260 | 4,980 | 2,449 | 489 | 560 | 1,644 | 2,008 |
| Zambia | DRC | 4,682 | 9,481 | 33,424 | 4,589 | 393 | 287 | 3,125 | 4,597 |
| Zambia | Malawi | 419 | 378 | 2,500 | 5,388 | 286 | 190 | 5,369 | 379 |
| Zambia | Mozambique | 55 | 2 | 0 | 60 | 2 | 1 | 2 | 11 |
| Zambia | Tanzania | 0 | 7 | 4 | 15 | 2 | 21 | 7 | 75 |
| Zambia | Zimbabwe | 182 | 299 | 433 | 350 | 0 | 0 | 12 | 3,675 |
| Zimbabwe | Mozambique | 85 | 294 | 129 | 2 | 0 | 0 | 1 | 0 |
| Zimbabwe | Zambia | - | - | 166 | 207 | 54 | 57 | 207 | 57 |
| Total Traded (MT) | | 177,959 | 103,127 | 108,679 | 74,470 | 3,867 | 8,476 | 59,145 | 57,496 |

Maize Grain Prices: There has been generally a marked increase in nominal maize grain prices at most border points ranging from 9 percent at Muloza border point (Mozambique/ Malawi) to 118 percent at Machipanda border point (Mozambique/ Zimbabwe). This huge increase in nominal maize grain prices at Machipanda could be either due to increased maize grain demand on the Zimbabwe side or reduced tradable stocks on the Mozambique side. Price increases are typical at this time of the year, but spikes as observed in Machipanda are unusual except in situations of below normal harvests. However, at the Zambia/DRC cross border point, prices were almost unchanged - declining by one percent at both sides. This is a result of increased maize availability on the local markets as private traders are moving huge quantities of grain to the border. In many of the border points, the observed September nominal maize prices are lower than the same time last year which is a sign of improved maize availability at most of the monitored sites (Table 3 and Figure 4).

Table 2: Maize Meal trade flows: May– Sep 2009

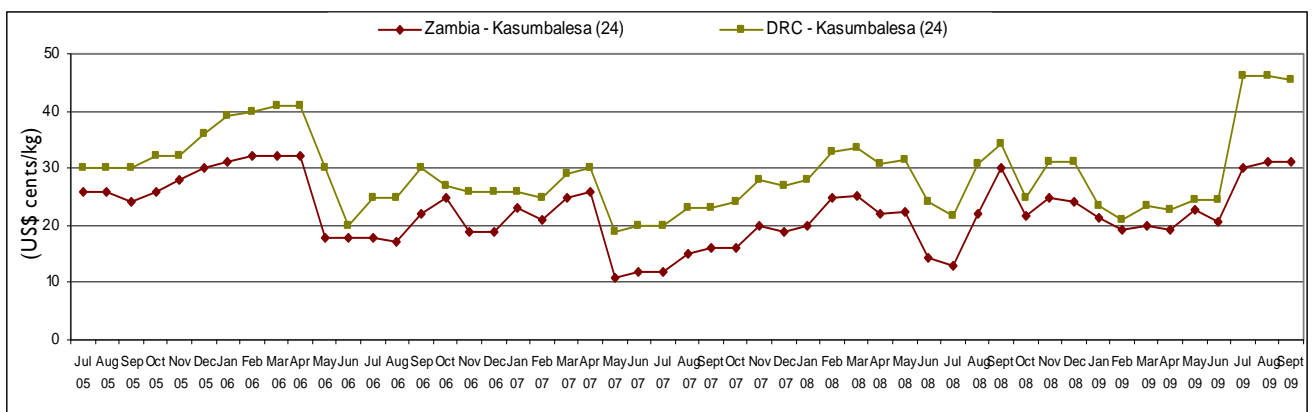
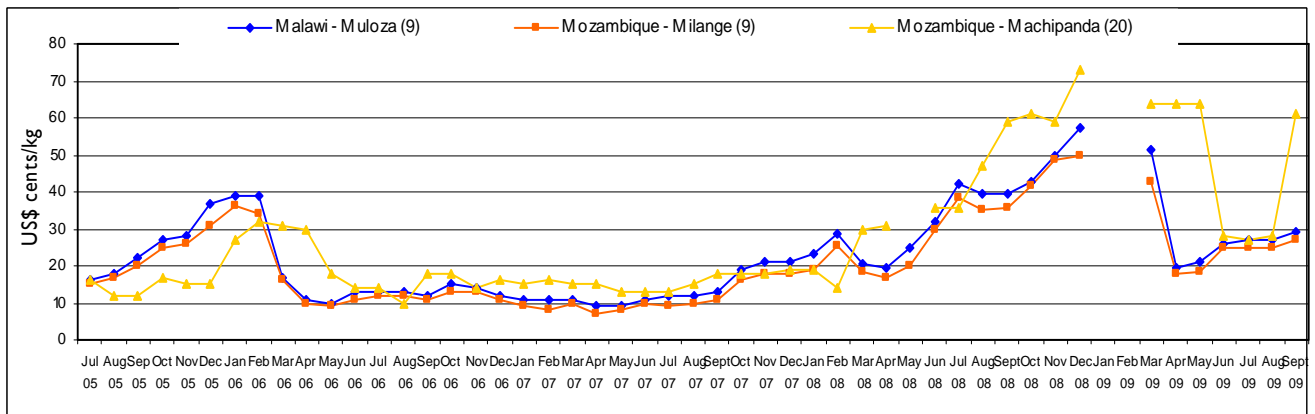
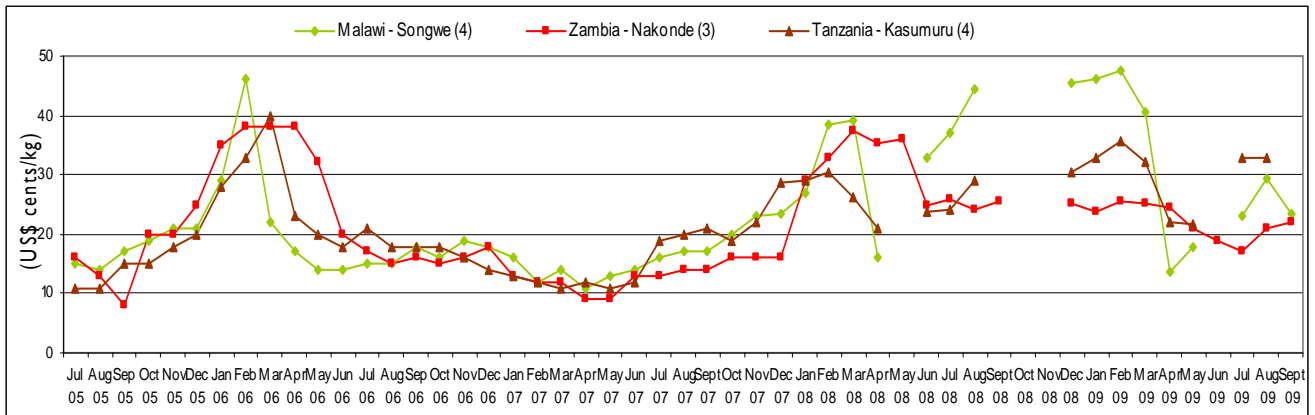
| Source | Destination | May 09 | Jun 09 | Jul 09 | Aug 09 | Sep 09 |
|--------------------------|-------------|------------|------------|------------|------------|------------|
| Malawi | Mozambique | 8 | 5 | 12 | 10 | 2 |
| Mozambique | Zimbabwe | 22 | 23 | 0 | 0 | 0 |
| South Africa | Zimbabwe | 16 | 99 | 152 | 3 | 3 |
| Tanzania | Zambia | 10 | 26 | 10 | 8 | 7 |
| Zambia | DRC | 198 | 482 | 413 | 206 | 102 |
| Zambia | Mozambique | 1 | 2 | 0 | 1 | 1 |
| Zambia | Tanzania | 1 | 1 | 2 | 2 | 2 |
| Zambia | Zimbabwe | 0 | 8 | 9 | 3 | 0 |
| Zimbabwe | Zambia | 0 | 0 | 0 | 0 | 52 |
| Total Traded (MT) | | 332 | 646 | 597 | 234 | 169 |

Table 3: Nominal maize price trends at selected border points (US Cents per kg)

| Price at Destination/Source | Jul 09 | Aug 09 | % change | Aug 09 | Sep 09 | % change | Sep 08 | Sep 09 | % change |
|-------------------------------|--------|--------|----------|--------|--------|----------|--------|--------|----------|
| Moz/Mal: Muloza (Destination) | 27 | 27 | 0 | 27 | 29 | 9 | 39 | 29 | -25 |
| Moz/Mal: Milange (Source) | 25 | 25 | -1 | 25 | 27 | 10 | 36 | 27 | -24 |
| Moz/Zim: Machipanda (Source) | 27 | 28 | 4 | 28 | 61 | 118 | 59 | 61 | 3 |
| Zam/DRC: Kasumba-Zam (Source) | 30 | 31 | 4 | 31 | 31 | -1 | 30 | 31 | 3 |
| Zam/DRC: Kasumba-DRC (Dest) | 46 | 46 | 0 | 46 | 46 | -1 | 34 | 46 | 32 |
| Zam/Tan: Nakonde (Source) | 17 | 21 | 23 | 21 | 22 | 5 | 26 | 22 | -14 |

Note: Border monitors record both source point of origin and destination (point of delivery) prices at each border point where prices are being monitored.

Figure 4: Retail MAIZE prices in selected border points (US\$ cents per kg)



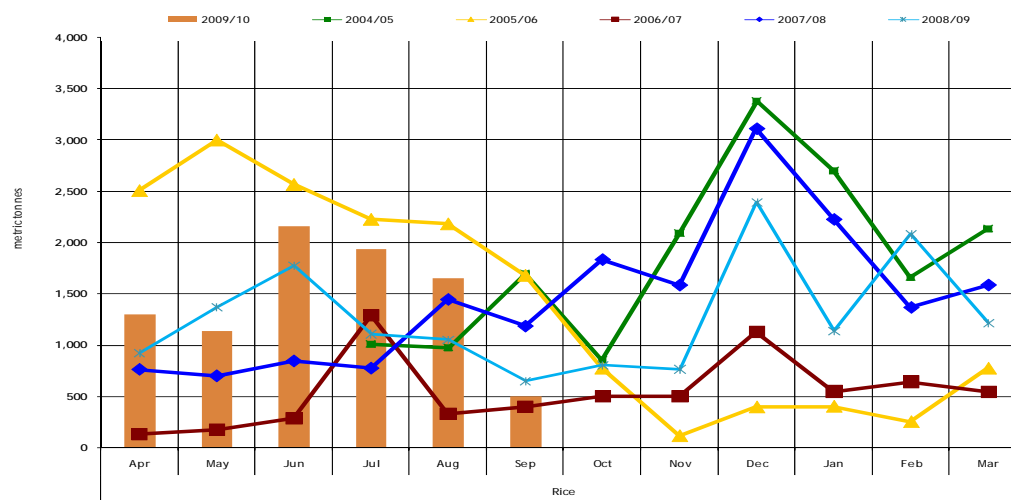
Summary of Rice trade flows

Table 4. Informal cross border RICE trade by source and destination country (MT)

| Source | Destination | Total 05/06 Season | Total 06/07 Season | Total 07/08 Season | Total 08/09 Season | Sep 08 | Sep 09 | Cumulative Apr- Sep 08/09 | Cumulative Apr- Sep 09/10 |
|--------------------------|-------------|--------------------|--------------------|--------------------|--------------------|------------|------------|---------------------------|---------------------------|
| Malawi | Mozambique | 12 | 1 | 822 | 58 | 6 | 57 | 47 | 256 |
| Malawi | Tanzania | 135 | 1,217 | 1,568 | 291 | 0 | 93 | 290 | 1,604 |
| Malawi | Zambia | 31 | 74 | 2,360 | 990 | 0 | 88 | 990 | 2,441 |
| Malawi | Zimbabwe | - | - | 405 | 0 | 0 | 0 | 0 | 630 |
| Mozambique | Malawi | 1,691 | 1,718 | 444 | 690 | 15 | 49 | 662 | 463 |
| Mozambique | Zimbabwe | 399 | 850 | 1,028 | 1,958 | 211 | 23 | 869 | 174 |
| South Africa | Zimbabwe | 64 | 82 | 33 | 25 | 2 | 3 | 11 | 19 |
| Tanzania | Malawi | 912 | 4 | 100 | 154 | 6 | 0 | 143 | 0 |
| Tanzania | Zambia | 641 | 557 | 397 | 374 | 41 | 47 | 235 | 278 |
| Zambia | DRC | 12,629 | 1,697 | 6,746 | 9,333 | 326 | 111 | 2,831 | 2,497 |
| Zambia | Malawi | 0 | 0 | 30 | 0 | 0 | 0 | 0 | 0 |
| Zambia | Zimbabwe | 106 | 803 | 3,312 | 1,387 | 41 | 27 | 797 | 312 |
| Zimbabwe | Zambia | 0 | 0 | 185 | 0 | 0 | 0 | 0 | 0 |
| Total Traded (MT) | | 16,620 | 7,003 | 17,434 | 15,268 | 649 | 498 | 6,878 | 8,680 |

The total volume of traded rice dropped three-fold from 1,652 MT in August to 498 MT in September 2009. Although a general decrease in traded volumes of rice often occurs in September, a 70 percent drop is unusual. Traded rice volumes are down 23 percent this year as compared to last year same time (498 MT this year against to 649 MT in September 2008). Equally low quantities were also recorded during the same month in 2006/07 marketing year. Malawi remains the major rice exporter with a total export share of 56.8 percent followed by Zambia (32.4 percent), Mozambique (7.3 percent) and Tanzania (3.2 percent). The same countries (Tanzania, Zambia and Mozambique) are also the main importers of rice from Malawi. Rice imported into Zambia is usually re-exported into DRC although the September volume of 111 MT is much lower than the August volume of 326 MT. The cumulative traded volumes of rice during April to September 2009 period are 21 percent higher compared to the same time last year (Table 4).

Figure 5: Recorded Volumes of Informal Cross Border RICE Trade 2004/05 to 2009/10 (MT)



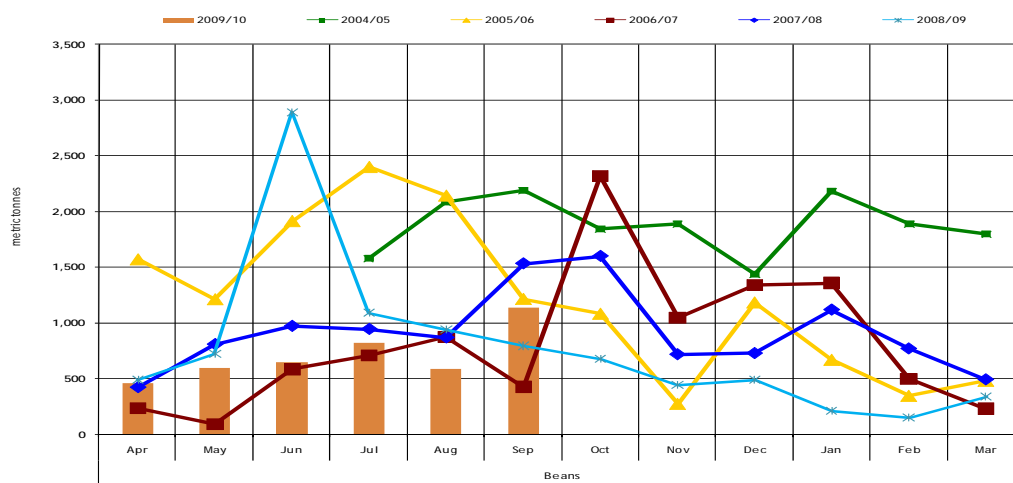
Summary of Bean trade flows

Table 5. Informal cross border BEAN trade by source and destination country (MT)

| Source | Destination | Total 05/06 Season | Total 06/07 Season | Total 07/08 Season | Total 08/09 Season | Sep 08 | Sep 09 | Cumulative Apr- Sep 08/09 | Cumulative Apr- Sep 09/10 |
|--------------------------|-------------|--------------------|--------------------|--------------------|--------------------|------------|--------------|---------------------------|---------------------------|
| Malawi | Mozambique | 76 | 269 | 149 | 19 | 0 | 2 | 17 | 317 |
| Malawi | Tanzania | 0 | 0 | 169 | 6 | 0 | 0 | 6 | 0 |
| Malawi | Zambia | 19 | 268 | 338 | 124 | 9 | 7 | 100 | 36 |
| Malawi | Zimbabwe | - | - | 480 | 0 | 0 | 0 | 0 | 0 |
| Mozambique | Malawi | 2,741 | 2,798 | 2,375 | 3,045 | 113 | 712 | 2,655 | 1,186 |
| Mozambique | Zimbabwe | 4 | 8 | 13 | 29 | 2 | 0 | 8 | 36 |
| South Africa | Zimbabwe | 325 | 83 | 11 | 6 | 0 | 0 | 2 | 7 |
| Tanzania | Malawi | 2,459 | 3,646 | 3,468 | 2,749 | 365 | 31 | 1,902 | 78 |
| Tanzania | Zambia | 472 | 588 | 1,058 | 946 | 75 | 113 | 718 | 603 |
| Zambia | DRC | 8,231 | 2,422 | 2,487 | 1,880 | 212 | 251 | 1,380 | 1,766 |
| Zambia | Tanzania | 0 | 2 | 0 | 0.4 | 0 | 14 | 0 | 50 |
| Zambia | Zimbabwe | 16 | 69 | 170 | 280 | 17 | 7 | 142 | 79 |
| Total Traded (MT) | | 14,343 | 10,153 | 10,988 | 9,235 | 794 | 1,137 | 6,930 | 4,249 |

In contrast to maize and rice trade, the total traded volume of beans doubled from the 489 MT captured in August to 1,137 MT in September, with the most significant bean trade flows coming from Mozambique into Malawi (712 MT), Zambia into DRC (251.46MT) and Tanzania into Zambia (112.52 MT). Mozambique-Malawi flows of this magnitude (712 MT) are unusual, and might have been a one-off consignment for a private trader. These bean trade flows brought the September 2009 total to about 30 percent higher than the total traded volume captured at the same time last year. The cumulative April to September 2009 volume of traded beans (4,249 MT) is 39 percent lower than the total traded volume (6,930 MT) recorded over the same period last year (Table 5). DRC remains the major bean importer with the highest share of total imports at 42 percent, followed by Malawi (30 percent), Zambia (17 percent), Zimbabwe (2 percent) and Tanzania (1.2 percent). On the export side, Zambia continues to top the list with a 76 percent export share, followed by South Africa (16.4 percent) and Tanzania and Malawi (3 percent each).

Figure 6: Recorded Volumes of Informal Cross Border BEAN Trade: 2004/05 to 2009/10



Annex 1: Trade Tables

Table 6 Informal Cross Border trade in Maize (MT)

| Source | Destination | 2004/05 Season | Apr-Jun 05 | Jul-Sep 05 | Oct-Dec 05 | Jan-Mar 06 | 2005/06 Season | Apr-Jun 06 | Jul-Sep 06 | Oct-Dec 06 | Jan-Mar 07 | 2006/07 Season | Apr-Jun 07 | Jul-Sep 07 | Oct-Dec 07 | Jan-Mar 08 | 2007/08 Season |
|-------------------|-------------|----------------|------------|------------|------------|------------|----------------|------------|------------|------------|------------|----------------|------------|------------|------------|------------|----------------|
| Tanzania | Zambia | 3,699 | 397 | 7,685 | 4,201 | 1,273 | 13,556 | 318 | 751 | 2632 | 2,559 | 6,260 | 835 | 2,649 | 1,158 | 338 | 4,980 |
| Zambia | Zimbabwe | 13,106 | 86 | 13 | 21 | 62 | 182 | 3 | 0 | 1 | 295 | 299 | 243 | 179 | 11 | 0 | 433 |
| Zambia | Malawi | 2,157 | 34 | 36 | 349 | - | 419 | 58 | 249 | 45 | 26 | 378 | 22 | 21 | 3 | 2,454 | 2,500 |
| Zambia | Tanzania | 93 | - | - | - | - | - | - | 0 | 0 | 7 | 7 | 4 | 0 | 0 | 0 | 4 |
| Malawi | Zambia | 34 | 8 | 5 | 51 | 17 | 81 | 64 | 65 | 27 | 46 | 202 | 907 | 427 | 171 | 274 | 1,779 |
| Zambia | DRC | 8,318 | 2,477 | 1,641 | 531 | 33 | 4,682 | 992 | 956 | 3189 | 4,344 | 9,481 | 8,123 | 11,044 | 10,377 | 3,880 | 33,424 |
| Mozambique | Malawi | 71,229 | 29,064 | 26,866 | 8,981 | 6,307 | 71,218 | 27,479 | 27,069 | 15726 | 7,120 | 77,394 | 21,394 | 19,648 | 7,712 | 7,324 | 56,078 |
| Malawi | Tanzania | 637 | 103 | 174 | 358 | 309 | 944 | 2,358 | 451 | 55 | 64 | 2,928 | 71 | 348 | 137 | 1,025 | 1,581 |
| Tanzania | Malawi | 2,656 | 471 | 1,211 | 33,601 | 49,579 | 84,862 | - | 0 | 183 | 1,705 | 1,888 | 0 | 0 | 8 | 1,065 | 1,888 |
| Mozambique | Zimbabwe | 2 | 2 | 3 | - | - | 5 | 4 | 0 | 6 | 2,075 | 2,085 | 4 | 0 | 1 | 6 | 11 |
| Mozambique | Zambia | - | 5 | 24 | 20 | - | 49 | 5 | 111 | 811 | 342 | 1,269 | 475 | 1,084 | 489 | 65 | 2,113 |
| Malawi | Mozambique | - | - | - | - | 133 | 133 | - | 0 | 17 | 574 | 591 | 97 | 86 | 1,786 | 1,786 | 3,755 |
| Zambia | Mozambique | - | - | - | - | 55 | 55 | 2 | 0 | 0 | 0 | 2 | 0 | 0 | 0 | 0 | 0 |
| Zimbabwe | Mozambique | - | - | - | - | 85 | 85 | 15 | 43 | 147 | 89 | 294 | 12 | 48 | 45 | 24 | 129 |
| South Africa | Zimbabwe | - | 486 | 921 | 55 | 226 | 1,688 | 17 | 8 | 15 | 9 | 49 | 9 | 10 | 17 | 11 | 47 |
| Total Traded (MT) | | 101,929 | 33,133 | 38,579 | 48,168 | 58,079 | 177,959 | 31,315 | 29,703 | 22854 | 19,255 | 103,127 | 32,496 | 35,544 | 22,221 | 18,417 | 108,679 |

Table 7: Informal Cross Border trade in Rice (MT)

| Source | Destination | 2004/05 Season | Apr-Jun 05 | Jul-Sep 05 | Oct-Dec 05 | Jan-Mar 06 | 2005/06 Season | Apr-Jun 06 | Jul-Oct 06 | Oct-Dec 06 | Jan-Mar 07 | 2006/07 Season | Apr-Jun 07 | Jul-Sep 07 | Oct-Dec 07 | Jan-Mar 08 | 2007/08 Season |
|-------------------|-------------|----------------|------------|------------|------------|------------|----------------|------------|------------|------------|------------|----------------|------------|------------|------------|------------|----------------|
| Tanzania | Zambia | 547 | 99 | 184 | 172 | 178 | 641 | 100 | 168 | 165 | 124 | 557 | 96 | 140 | 84 | 77 | 397 |
| Malawi | Tanzania | 450 | - | 61 | 0 | - | 135 | 56 | 740 | 106 | 315 | 1,217 | 363 | 421 | 761 | 23 | 1,568 |
| Tanzania | Malawi | 70 | 3 | 4 | 108 | 797 | 912 | 4 | 0 | 0 | 0 | 4 | 0 | 0 | 0 | 100 | 100 |
| Zambia | DRC | 12,644 | 6,164 | 5,661 | 690 | 114 | 12,629 | 46 | 231 | 1125 | 295 | 1,697 | 253 | 486 | 2,658 | 3,349 | 6,746 |
| Zambia | Malawi | 0 | - | 0 | 0 | - | 0 | - | 0 | 0 | 0 | 0 | 0 | 0 | 0 | 30 | 30 |
| Malawi | Zambia | 1 | 30 | 1 | 0 | - | 31 | - | 2 | 12 | 60 | 74 | 285 | 510 | 1,055 | 510 | 2,360 |
| Zambia | Zimbabwe | 50 | 15 | 16 | 34 | 41 | 106 | 55 | 141 | 76 | 531 | 803 | 629 | 1,086 | 1,016 | 581 | 3,312 |
| Mozambique | Malawi | 2,532 | 1,456 | 0 | 152 | 83 | 1,691 | 222 | 1,155 | 275 | 66 | 1,718 | 180 | 95 | 130 | 39 | 444 |
| Malawi | Mozambique | 1 | 4 | 2 | 0 | 6 | 12 | - | 0 | 0 | 1 | 1 | 11 | 488 | 288 | 35 | 822 |
| Mozambique | Zimbabwe | 58 | 188 | 97 | 45 | 69 | 399 | 99 | 166 | 253 | 332 | 850 | 291 | 174 | 321 | 242 | 1,028 |
| South Africa | Zimbabwe | 0 | 21 | 19 | 9 | 15 | 64 | 6 | 3 | 67 | 6 | 82 | 8 | 8 | 8 | 9 | 33 |
| Total Traded (MT) | | 16,355 | 8,062 | 6,045 | 1,210 | 1,303 | 16,620 | 588 | 2,606 | 2079 | 1,730 | 7,003 | 2,311 | 3,408 | 6,533 | 5,182 | 17,434 |

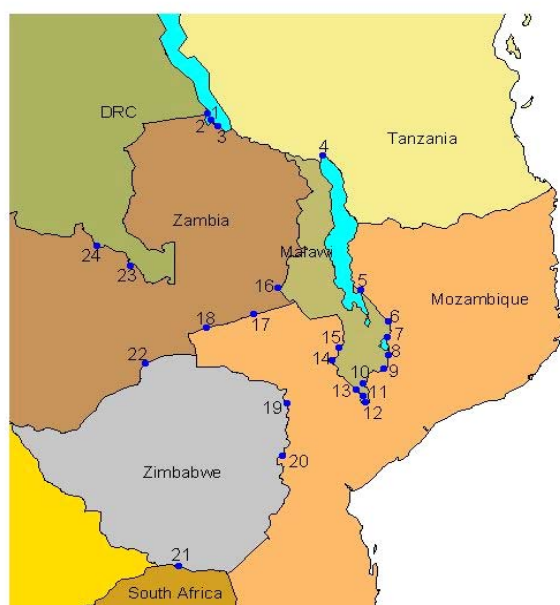
Annex 1 (continued)

Table 8: Informal cross border trade in beans (MT)

| Source | Destination | 2004/05 Season | Apr-Jun 05 | Jul-Sep 05 | Oct-Dec 05 | Jan-Mar 06 | 2005/06 Season | Apr-Jun 06 | Jul-Sep 06 | Oct-Dec 06 | Jan-Mar 07 | 2006/07 Season | Apr-Jun 07 | Jul-Sep 07 | Oct-Dec 07 | Jan-Mar 08 | 2007/08 Season |
|--------------------------|-------------|----------------|--------------|--------------|--------------|--------------|----------------|-------------|--------------|--------------|--------------|----------------|--------------|--------------|--------------|--------------|----------------|
| Tanz | Zambia | 509 | 99 | 223 | 87 | 63 | 472 | 128 | 154 | 73 | 233 | 588 | 433 | 239 | 82 | 304 | 1,058 |
| Zambia | Tanz | 0 | - | 0 | 0 | - | 0 | - | 0 | 2 | 0 | 2 | 0 | 0 | 0 | 0 | 0 |
| Zambia | DRC | 12,019 | 3,593 | 3,740 | 843 | 55 | 8,231 | 390 | 350 | 1,558 | 124 | 2,422 | 615 | 683 | 862 | 327 | 2,487 |
| Malawi | Moz | 417 | 14 | 29 | 5 | 28 | 76 | 15 | 2 | 0 | 252 | 269 | 79 | 9 | 29 | 32 | 149 |
| Zambia | Zim | 372 | 1 | 6 | 3 | 6 | 16 | 28 | 20 | 8 | 13 | 69 | 37 | 42 | 62 | 29 | 170 |
| Moz | Malawi | 2,997 | 683 | 1,530 | 463 | 65 | 2,741 | 613 | 1,383 | 737 | 65 | 2,798 | 524 | 1,038 | 627 | 186 | 2,375 |
| Malawi | Tanz | 2 | - | 0 | 0 | - | 0 | - | 0 | 0 | 0 | 0 | 0 | 169 | 0 | 0 | 169 |
| Moz | Zim | 67 | 1 | 1 | 2 | - | 4 | 1 | 2 | 4 | 1 | 8 | 3 | 2 | 5 | 3 | 13 |
| Malawi | Zambia | 30 | 3 | 7 | 6 | 3 | 19 | 151 | 64 | 26 | 27 | 268 | 184 | 101 | 38 | 15 | 338 |
| Tan | Malawi | 403 | 18 | 68 | 1,134 | 1,239 | 2,459 | - | 54 | 2,227 | 1,365 | 3,646 | 0 | 880 | 1341 | 1,247 | 3,468 |
| RSA | Zim | 0 | 165 | 152 | 4 | 4 | 325 | 3 | 2 | 66 | 12 | 83 | 3 | 5 | 2 | 1 | 11 |
| Total Traded (MT) | | 16,816 | 4,577 | 5,756 | 2,547 | 1,463 | 14,343 | 1329 | 2,031 | 3,360 | 2,092 | 10,153 | 2,208 | 3,348 | 3,048 | 2,384 | 10,988 |

UN World Food Programme Regional Bureau for Southern Africa, Johannesburg South Africa and
FEWS NET Regional Office, Pretoria South Africa

Cross - Border Monitoring Sites, 2007



NAME OF BORDER

- | | |
|----------------------|--------------------------|
| 1. Mulungu / Kigoma | 13. Marine |
| 2. Zombe / Kasesya | 14. Mkumaniza |
| 3. Nakonde / Tunduma | 15. Mwanza |
| 4. Songwe / Kasumuru | 16. Mchinji |
| 5. Kalanje | 17. Marowela |
| 6. Nayuchi | 18. Chadiza |
| 7. Naminkhakha | 19. Nyamapanda |
| 8. Kolowikho | 20. Machipanda |
| 9. Muloza | 21. Messina / Beitbridge |
| 10. Sankhulani | 22. Chirundu |
| 11. Tengani | 23. Mokambo |
| 12. Marka | 24. Kasumbalesa |

For more information
see: www.fews.net