



World Food Programme

Issue 9 | February 2013

Global Food Security Update

TRACKING FOOD SECURITY TRENDS IN VULNERABLE COUNTRIES

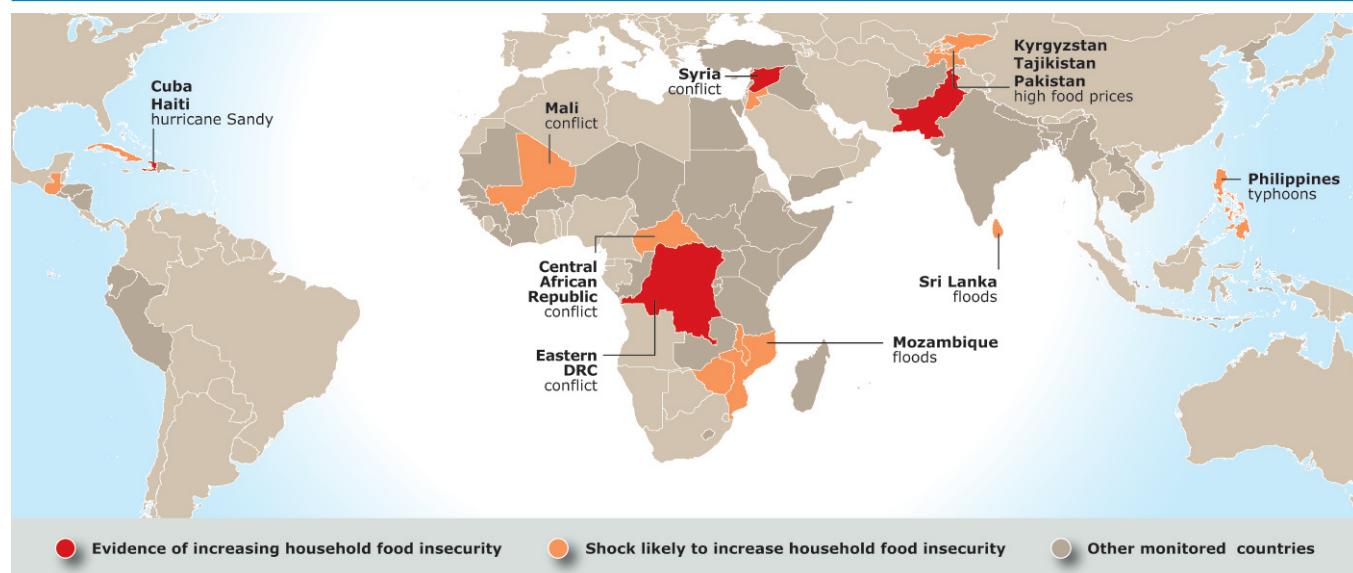
The Global Food Security Update provides a quarterly overview of key food security trends in vulnerable countries. Information is provided by WFP VAM field teams and partners.

In focus

- Recent or ongoing **harvests** are generally contributing to greater food security in most parts of East Africa, West Africa, Central America and Asia while food insecurity levels are reaching their annual peak in Southern Africa.
- The **Syrian conflict** continues to have major impacts on food security throughout the sub-region. Intensified conflict during the past months led to the internal displacement of about 3 million people inside Syria. In addition, 808,000 people have been registered as refugees or are awaiting registration in neighboring countries. There has been a substantial disruption in markets and livelihoods, also affecting bread and wheat flour supply chain. Cereal, fruit and vegetable production has dropped by about half according to latest estimates. The refugee outflow poses an increasing strain on receiving countries, in particular **Jordan** and **Lebanon**.
- Recent conflict in the **Democratic Republic of Congo** has increased the number of food insecure population, with 6.4 million people in IPC phase 4 (emergency) and phase 3 (crisis). IPC phase 4 conditions also prevail in some areas of **Somalia** and **South Sudan**. The resumption of conflict in **Mali** is expected to increase food insecurity levels in the North.
- Tropical storms have caused an increase in food insecurity levels in the **Philippines**, **Haiti** and **Cuba** due to extensive damage to infrastructure and crops. Parts of **Sri Lanka** are facing crop losses caused by a combination of drought conditions in the third quarter and flooding in December. In January, flooding affected areas of **Mozambique** and **Malawi**, causing damage to crops and infrastructure.
- Although international food price indices are at high levels, price transmissions to domestic markets have been limited. As an exception, higher prices have been reported in parts of Central Asia. **Tajikistan** and **Kyrgyzstan** are experiencing substantial increases in the price of wheat and other food commodities impeding food access for many vulnerable groups. In **Afghanistan** and **Pakistan**, high wheat prices are driving down wage to wheat terms of trade.

Key trends in food security

OCTOBER 2012 - JANUARY 2013



The boundaries and names shown on this map do not imply official endorsement or acceptance by the United Nations.

Regional highlights

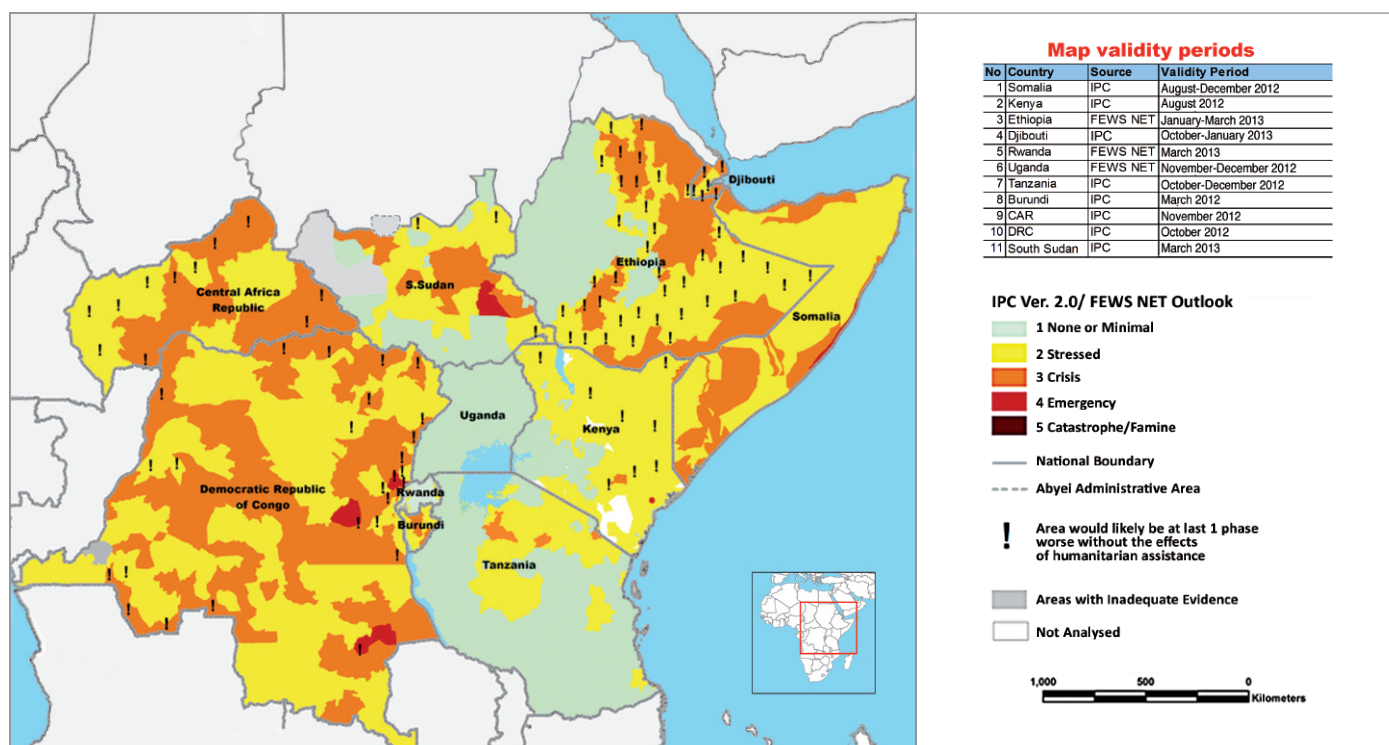
EAST AND CENTRAL AFRICA

- Favourable seasonal rains in crop producing areas of the region have resulted in good harvests and a seasonal improvement in regional food security conditions. Following the harvests, staple food prices have started declining in **Ethiopia** and **Somalia** whereas main exporters such as **Uganda** and **Tanzania** have experienced a general increase in prices of key commodities (mainly maize, sorghum and rice) due to strong regional demand.
- In spite of this general improvement, pockets of high food insecurity (IPC Phase 4, emergency) still remain in coastal areas of **Somalia**, eastern **Democratic Republic of Congo** (DRC) and eastern **South Sudan** where instability, low agricultural production and high transport costs are key drivers of low physical and economic access to food for vulnerable households.
- The renewed conflict in eastern **DRC** has significantly contributed to the deterioration of the food security and nutrition situation, especially in the province of North Kivu. According to the December 2012 IPC

analysis in the DRC, about 6.4 million people are in crisis and emergency levels of food insecurity (IPC phases 3 and 4 respectively) and require food and agricultural assistance.

- In **South Sudan**, food prices in Q4-2012 were very high and similar to the levels registered during the June-July lean season when key staple prices spiked in Juba and other urban markets. However, with the end of the main harvest in January, prices have declined but still remain higher than the five year average. This trend is likely to continue inhibiting households' economic access to food. Maize prices in **Tanzania** are expected to remain high until February, when the Vuli season harvests will enter the markets.
- In **Rwanda and Burundi**, food insecurity was underpinned by the last lean season (October-December); however, conditions are expected to improve in most livelihoods zones as a result of the season A harvests in the first quarter of 2013.

Acute food insecurity overview in East and Central Africa (January 2013)



Source: Regional FSNWG, IPC country teams and FEWS NET.

The boundaries and names shown on this map do not imply official endorsement or acceptance by the United Nations.

IN FOCUS: DEMOCRATIC REPUBLIC OF CONGO

The renewed conflict in eastern **Democratic Republic of Congo (DRC)** has significantly contributed to the deterioration of the food security and nutrition situation, especially in the provinces of North Kivu, South Kivu and Katanga. According to the December 2012 IPC analysis in the DRC, about 6.4 million people are in acute food insecurity and livelihood crisis (IPC phases 4 and 3), requiring humanitarian assistance.

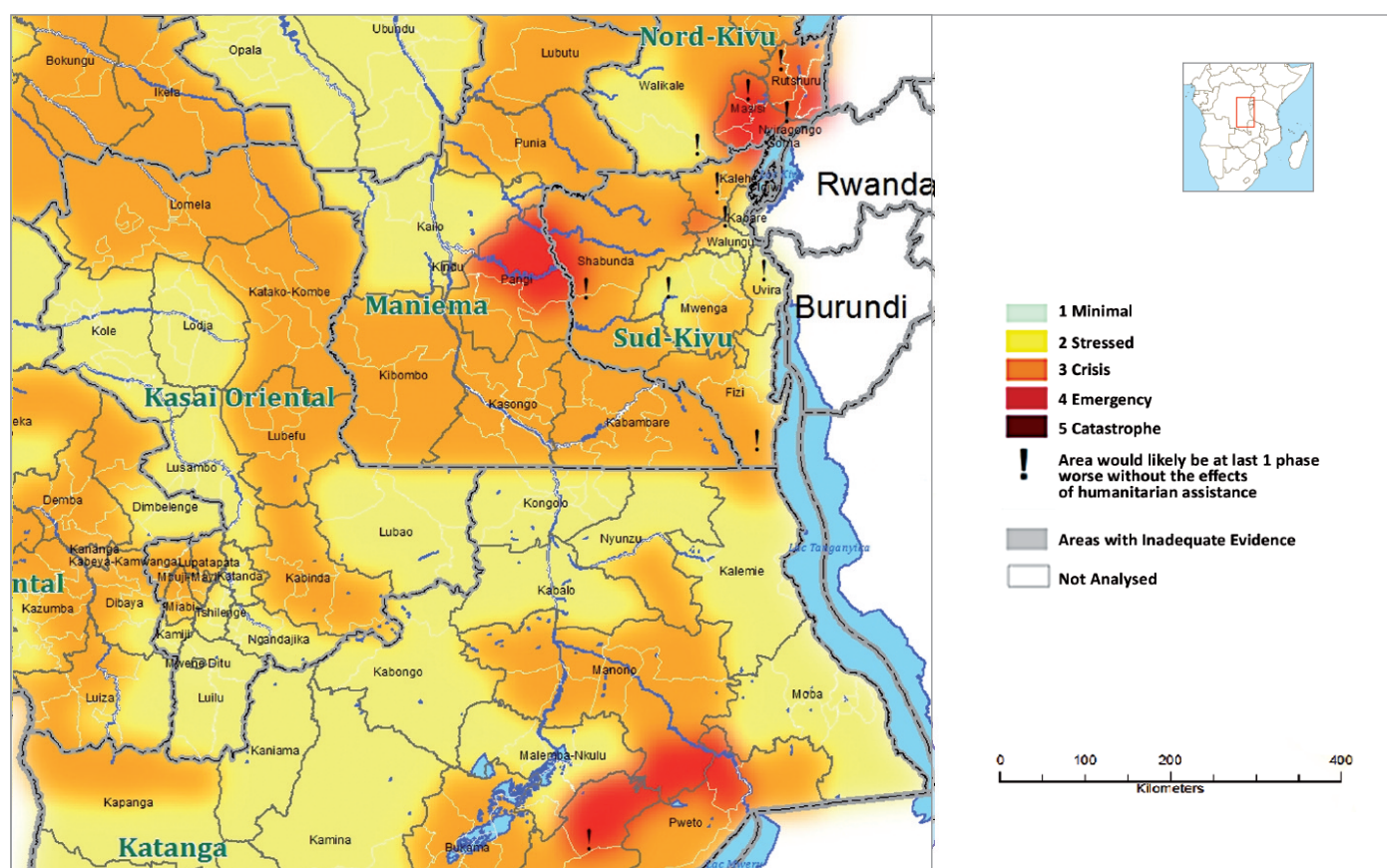
Conflict in the North and South Kivu and Katanga provinces and subsequent displacements explain the increase in food insecurity from 5.4 million in June 2012 to 6.3 million in October and 6.4 million in December 2012 following the clash between the M23 movement and the national army (FARDC) in Goma. About 60 percent of the affected population are located in North Kivu, South Kivu, Maniema, Province Orientale and Katanga. The main causes of food insecurity are related to conflict-driven population displacement, chronic poverty and lack of adequate social and productive infrastructure. Decades of political and military crisis together with poor governance have weakened the government's capacity to ensure basic social services to the population.

The most recent national-level nutrition survey (MICS, 2010) shows a national prevalence of 10.7 percent global acute malnutrition (GAM), with 5.2 percent severe acute malnutrition (SAM), classified as a "serious" situation according to WHO thresholds. Levels at province level, however, range from 6.5 to 14.9 percent, the latter being close to the emergency threshold according to WHO standards. The prevalence rates of acute malnutrition surpass 10 percent in six provinces out of 11.

Chronic malnutrition is a major problem throughout the country affecting 43.4 percent of children 6-59 months of age according to the 2010 MICS survey and prevalence rates reaching up to 58.3 percent at the provincial level.

A joint comprehensive food security and vulnerability analysis (CFSVA) by the government, WFP, FAO and IFPRI is underway to update the current food security information.

Integrated Food Security Phase Classification in Eastern Democratic Republic of Congo (December 2012)



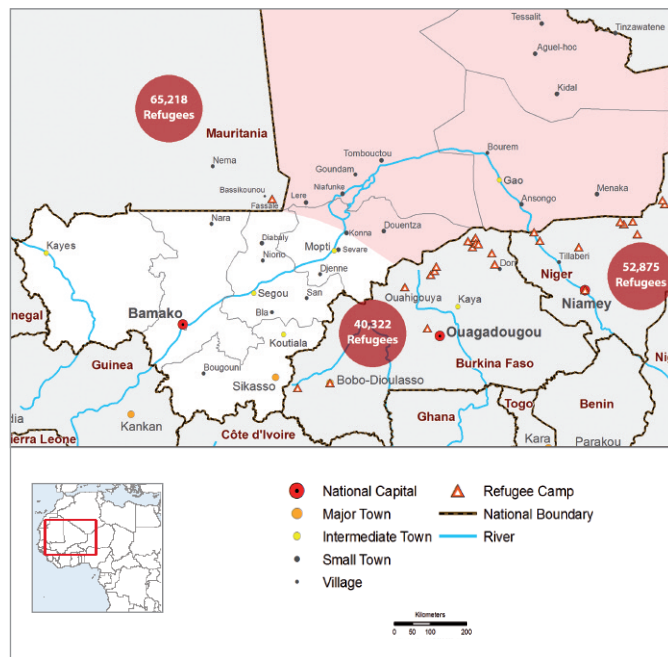
Source: IPC team of the Democratic Republic of Congo.

The boundaries and names shown on this map do not imply official endorsement or acceptance by the United Nations.

WEST AFRICA

- Renewed conflict in **Mali** has triggered new population displacements and disrupted markets and trade in the north. Prior to the outbreak of fighting, some 200,000 Malians were internally displaced, another 150,000 were living as refugees in **Burkina Faso, Mauritania** and **Niger**. Military action in the north has limited humanitarian access. Conditions continue to remain of high concern in Mbera refugee camp in southeastern Mauritania, pointing towards a critical malnutrition and mortality situation according to a November 2012 assessment.
- In much of the region, the main annual harvest is concluding, leading to a seasonal improvement in food security conditions. Although good crop prospects have been confirmed for West Africa as a whole, millet prices remain above the five-year nominal average in **Burkina Faso, Mali, Niger** and **Senegal**. Successive food shocks have also undermined livelihoods, leaving an estimated 3 million vulnerable in Niger.
- In the **Central African Republic**, the Seleka movement has taken over large swathes of northern and central parts of the country during a December offensive. The Seleka advance is reported to have prompted some displacement and disruption to agricultural livelihoods. Moderate food price increases were observed in Bangui in January. The extent to which the event has affected humanitarian needs is being assessed.

Situation overview in Mali (23-30 January 2013)



Source: WFP, UNHCR.

The boundaries and names shown on this map do not imply official endorsement or acceptance by the United Nations.

SOUTHERN AFRICA

- Southern Africa is in the midst of its **lean season** which peaks in January-February. The next main harvest is expected in April.
- Due to a **poor 2011/2012 harvest and increasing food prices**, some 2 million people in **Malawi** and 1.67 million in **Zimbabwe** are expected to be food insecure during the first quarter of 2013. Crisis conditions (IPC Phase 3) are expected for households in southern Malawi that have not received assistance, while those that have received assistance are expected to be in Phase 2 (stress). Phases 2 and 3 (stress and crisis) are also projected in Zimbabwe, however, the planned assistance targeting up to 1.6 million people is expected to mitigate the situation.
- In southern and northern **Mozambique** at least 169,000 people have been temporarily displaced due to **flooding** caused by a tropical cyclone. National capacities to deal with the situation in southern Mozambique are already overstretched. An Emergency Food Security Assessment is scheduled to take place in February to assess the impacts at community and household level.
- Several other countries, including parts of **Malawi** have been affected by the flooding with damage to crops and infrastructure. Heavy rainfall and strong winds are being reported. River levels are high across the region and flooding is forecasted for Namibia during the month of February.

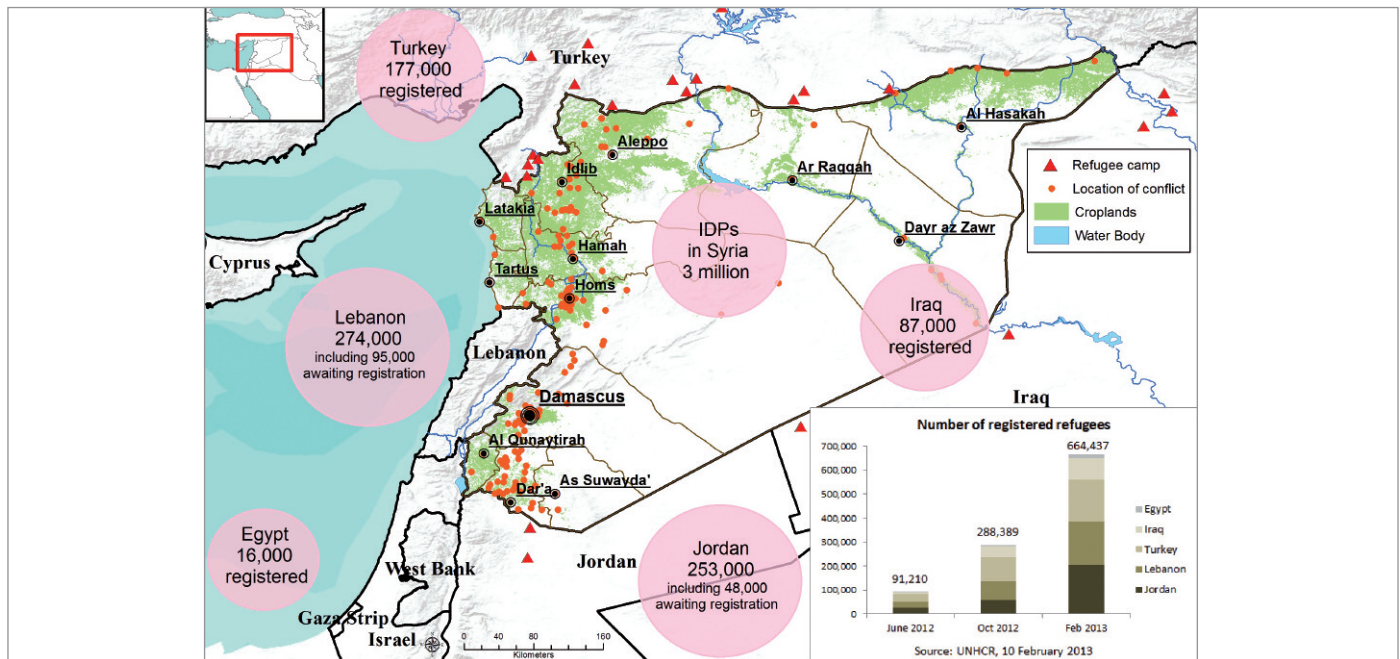
Mozambique Floods: number of displaced people, by province (January 2013)



Source: Mozambique National Disasters Management Institute (INGC). The boundaries and names shown on this map do not imply official endorsement or acceptance by the United Nations.

MIDDLE EAST, NORTH AFRICA AND CENTRAL ASIA

Syria and neighbouring countries: geography of conflict



Source: WFP, UNHCR.

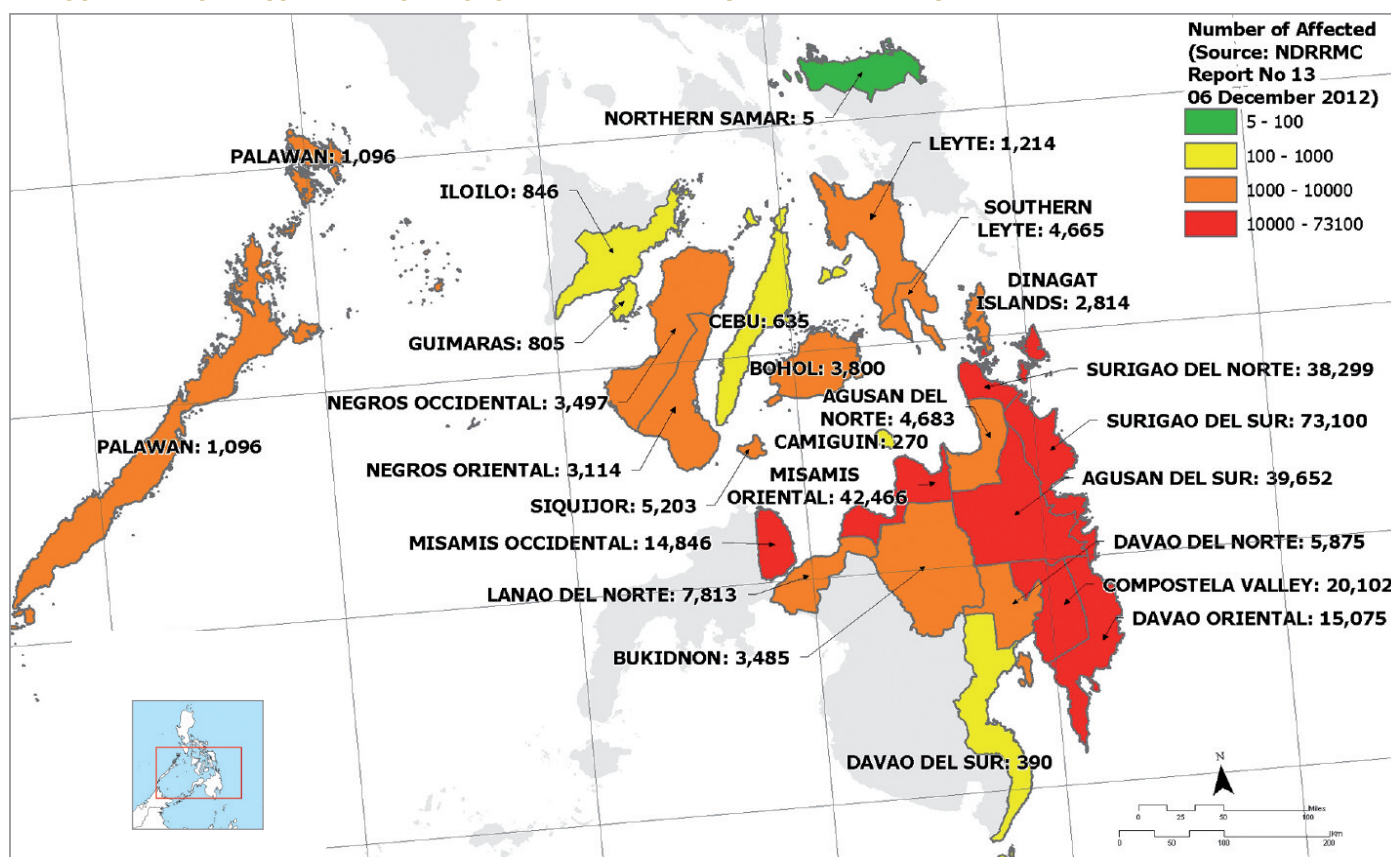
The boundaries and names shown on this map do not imply official endorsement or acceptance by the United Nations.

- The food security situation in **Syria** is deteriorating as the conflict is intensifying in many parts of the country. It is estimated that about **3 million people are internally displaced** and nearly **808,000 people** have been registered as refugees or are awaiting registration in neighbouring countries. Inside Syria, household food security has been impacted across all governorates through a substantial **loss of purchasing power, increasing prices** of food and other basic commodities and **market disruptions**. Traditional market channels of wheat and bread have been heavily disrupted leading to long queues in bakeries where subsidized bread is being sold. In some areas bakeries have not been functioning due to heavy fighting or lack of access to fuel and other inputs such as yeast. It is estimated by FAO that the 2012 **cereal, fruit and vegetable production has dropped by half** compared to an average year due to insecurity, destruction of infrastructure, lack of fuel and marketing opportunities.
- **Jordan** has received a record number of 52,000 new arriving refugees during January 2013 bringing the total number of registered refugees and those awaiting registration to about 253,000. Most of new refugees are moving to the rapidly expanding Zaatari camp.
- In **Lebanon**, the refugee population has more than doubled since October 2012 up to 274,000. Shelter has become a major constraint during the harsh winter conditions. Despite difficulties to access certain areas due to poor weather conditions, food assistance reached the population in need.
- Also in other neighboring countries, the refugee population increased over the past quarter. **Turkey** now hosts more than 177,000 officially registered refugees and Iraq more than 87,000 according to recent UNHCR estimates. Both countries have been affected by border closures leading to reduced trade flows with potential impacts on livelihoods and commodity prices in border areas. However, overall national food availability and prices have not been affected.
- **Egypt** has been affected by economic slowdown due to political instability and reduced purchasing power of vulnerable households. It is now estimated that 83 percent of vulnerable households across the country are facing difficulties in meeting their basic needs. The country has received a smaller number of vulnerable Syrian refugees in need of assistance.
- In **Sudan**, about 3.6 million people are food insecure with the majority in conflict-affected areas of Darfur, South Kordofan, Blue Nile and Abyei. In January, there has been an escalation of security incidents and increased conflict in parts of North Darfur resulting in the displacement of some 150,000 people. In most other parts of the country the food security situation has improved due to a favorable harvest.
- **Kyrgyzstan and Tajikistan** have been affected by higher international and regional wheat prices fuelled by the 2012 harvest failure in Kazakhstan. While household level food security deteriorated in Kyrgyzstan compared to the previous year, the situation in Tajikistan was partly mitigated through a record level in remittances and a general good local production output. However, rural households without access to agriculture and remittances income will be extremely vulnerable during the winter months as they were not able to build up their resilience to meet food price increases.

ASIA

- In December 2012 typhoons made landfall in the **Philippines** while flooding affected **Sri Lanka**. Prior to Typhoon impacts, a November 2012 Philippines IPC analysis indicated that the food security situation in the worst hit provinces (Compostela Valley, Agusan del Sur, Davao Oriental and Surigao del Sur) were already stressed (IPC Phase 2) and crisis (IPC Phase 3). Floods and landslides have affected areas of Sri Lanka that had suffered from drought conditions in 2012.
- Surplus rice harvests are reported in **Cambodia** and **Laos**. Although the **Indian kharif** harvest (October 2012 – January 2013) is projected to be 5 percent lower than last year, India continues to hold large grain stocks and will continue to be a major exporter.
- Although food security is improving in **Nepal** following the summer crop harvest, IPC Phase 2 Stress conditions prevail in the mid-Western Hill, where a late start to the monsoon, strong winds and pest infestations caused crop damage.
- Increasing wheat prices are driving down wage to wheat terms of trade for casual laborers in **Afghanistan** and **Pakistan**. In contrast, wage to rice terms of trade are improving in **Bangladesh** and **Cambodia** thanks to the start of the rice harvest.

Philippines, Super Typhoon Bopha, population affected (December 2012)



Source: WFP.

The boundaries and names shown on this map do not imply official endorsement or acceptance by the United Nations.

LATIN AMERICA AND CARIBBEAN

- Hurricane Sandy hit **Haiti** and **Cuba** at the end of October 2012. The series of natural shocks in 2012 led to the highest level of food insecurity in Haiti in a decade, 6.7 million people are estimated to be food insecure. Crop losses and increasing price of domestic maize have been observed.
- A severe dry spell and the strongest earthquake in the last 36 years have affected poor and vulnerable areas in **Guatemala**. The combination of these natural shocks led to crop losses and increased vulnerability of affected households. Food insecurity prevalence rates are as high as 64 percent in the Dry corridor. Earthquake affected municipalities are facing stressed conditions (compatible with IPC phase 2), as reported by FEWSNET.
- Food security conditions remained stable in **Honduras**, **El Salvador** and **Nicaragua**. Following a good distribution of rainfall during the second planting season, the *postrera* harvest had good results; normal levels of food availability are expected through March 2013.
- Overall, higher international food prices had a limited impact on domestic prices.

IN FOCUS: HAITI

Due to a series of severe shocks - drought, tropical storms Isaac and Sandy, the food security situation has sharply deteriorated during the second half of 2012. According to the National Committee on Food Security (CNSA), 6.7 million people are estimated to live in food insecurity (the highest level recorded in a decade); out of these, as much as 1.5 million face severe food insecurity, whereas 0.8 million were severely food insecure in 2011. The cumulated impact of various shocks which culminated with Sandy, led the Government of Haiti to temporarily declare a State of Emergency in November and December 2012.

Crop losses and increasing price of domestic maize have been observed:

- A quarter of grain and bean crops were lost (ESFA December 2012).
- Losses in livestock holdings were up to 50 percent for the affected households, with negative effects on the fishing industry.
- Critical crop losses have severely reduced income opportunities for the rural population. Food stocks are at their lowest in affected communes and work opportunities in rural areas have severely contracted.
- Moderate food prices increases are noted in the last quarter of 2012. Given the high import dependency of the country, it should be noticed that imported rice price increased by 3 percent compared to last year, 5 percent from previous quarter. Domestic maize showed a 12 percent increase from last year, 9 percent from previous quarter. There is a risk of high maize price until next harvest in July, whereas imported rice price will probably remain more stable.

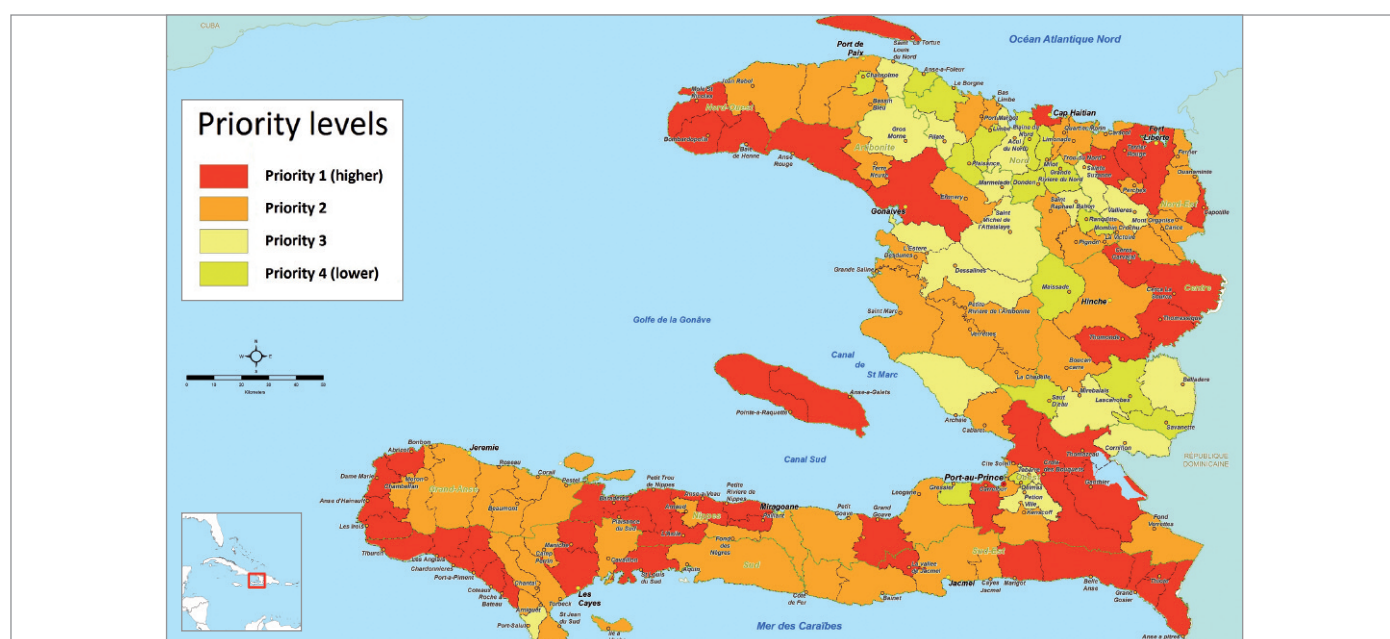
Affected households have engaged in negative coping strategies: reduction of the number and the quality of meals; increases in tree felling for charcoal production; increased migration to urban centers and to the Dominican Republic, and increases in under-aged domestic work.

An emergency response targeting the most vulnerable affected households is required during the lean season from January to June 2013. The earliest prospect for improvement lies with the next, and somewhat distant, harvest of mid-2013. Food prices are expected to remain high during the forecasted period.

The Emergency Food Security Assessment (EFSA) of December 2012 indicates that the nutritional status of children under 5 has slightly deteriorated, still remaining within acceptable threshold: prevalence of acute malnutrition (based on MUAC) was at 4.8 percent compared to 2.6 percent in April 2012 (SMART survey). Children from 6 to 17 month presented higher rate of acute malnutrition (10.2 percent) compared to other age groups.

During the two weeks following Sandy, 3,593 new cases of cholera were reported. However, the overall downward trend in the cholera epidemic continued in 2012. The WHO/PAHO estimates that 118,000 people could face cholera in 2013 (OCHA 31 December).

Prioritization of communes based on Sandy, Isaac and drought impact (November 2012)



Source: WFP, CNIGS, CNSA.

The boundaries and names shown on this map do not imply official endorsement or acceptance by the United Nations.



Acronyms

CFSVA	Comprehensive Food Security and Vulnerability Analysis	MICS	Multiple Indicator Cluster Survey
CNIGS	Centre National de l'Information Géo-Spatiale, Haiti	MUAC	Mid-Upper Arm Circumference
CNSA	National Committee for Food Security in Haiti	OCHA	United Nations Office for the Coordination of Humanitarian Affairs
DRC	Democratic Republic of the Congo	PAHO/WHO	Pan American Health Organization, Regional Office of the World Health Organisation
EFSA	Emergency Food Security Assessment	SAM	Severe Acute Malnutrition
FAO	Food and Agriculture Organization of the United Nations	SMART	Standardized Monitoring and Assessment of Relief and Transitions
FSNWG	Food Security and Nutrition Working Group	UNHCR	United Nations High Commissioner for Refugees
FEWSNET	Famine Early-Warning Systems Network	VAM	Vulnerability Analysis and Mapping
FSMS	Food Security Monitoring System	WFP	World Food Programme
GAM	Global Acute Malnutrition	WHO	World Health Organization
IPC	Integrated Food Security Phase Classification		

Information sources

FAO: www.fao.org

FEWS-NET: www.fews.net

FSNAU: <http://www.fsnao.org/>

FSNWG: <http://www.disasterriskreduction.net/fsnwg>

IPC: <http://www.ipcinfo.org/>

OCHA: <http://www.unocha.org/>

UNHCR: www.unhcr.org

WFP: <http://www.wfp.org/food-security>

WHO: <http://www.who.int>

Regional focal points

East and Central Africa:

Southern Africa:

West Africa:

Middle East, North Africa and Central Asia:

Latin America and the Caribbean:

Asia:

Sergio Regi (sergio.regi@wfp.org)

Joao Manja (joao.manja@wfp.org)

Naouar Labidi (naouar.labidi@wfp.org)

Asif Niazi (asif.niazi@wfp.org)

Margaretha Barkhof (margaretha.barkhof@wfp.org)

Siemon Hollema (siemon.hollema@wfp.org)

For more information

Joyce Luma

Deputy Director, Analysis and Nutrition Service

joyce.luma@wfp.org

World Food Programme

Via Cesare Giulio Viola, 68/70 - 00148 Rome, Italy

www.wfp.org/food-security

Spain supports the preparation of the Global Update.



vam
food security analysis