



ព្រឹត្តិបត្រថ្លៃអាហារ និងប្រាក់ឈ្នួលពលកម្មនៅកម្ពុជា



CAMBODIA FOOD PRICE AND WAGE BULLETIN

Agricultural Marketing Office, DPS, MAFF

October 2013, Issue 56



HIGHLIGHTS

- **Food purchasing power of households** increased in rural and urban areas on a month-on-month basis by 8.0% and 4.7%, respectively.
- **Retail price of lowest quality rice** in rural and urban areas decreased by 2.7% and 3.9% on a month-on-month basis, respectively.
- **Wholesale price of mixed rice** increased by 0.2% month-on-month and by 10.0% on a year-on-year basis.
- **Thai and Vietnamese Export price of rice:** Thai rice prices decreased by 0.2% while Vietnamese rice prices increased by 6.5% on a month-on-month basis.
- **FAO Food Price Index** averaged 205.8 points, a month-on-month increase of 3.4% driven by a surge in sugar prices and upward trend of other commodities.
- The **inflation rate** in was 3.8% in September. Month-on-month food prices increased by 1.2% while gasoline prices decreased by 1.6%.

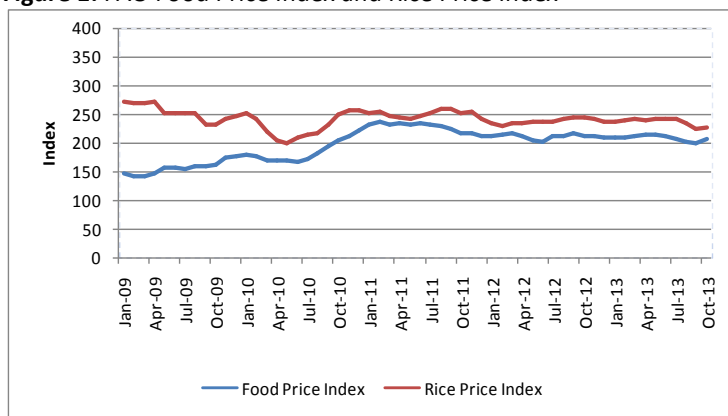
Overview

This Bulletin is a joint publication¹ by the Agricultural Marketing Office (Department of Planning and Statistics) of the Ministry of Agriculture, Forestry and Fisheries (AMO MAFF) and the United Nations World Food Programme Cambodia. It monitors the price of food commodities and wage rates of unskilled labor on a monthly basis. It also aims to detect changes and identify trends in the food purchasing power of vulnerable households.

International Food and Rice Prices

The FAO Food Price Index², measuring the international price level of a basket of key food commodities, averaged 205.8 points in October 2013, a month-on-month increase of 3.4%, the first increase since April 2013. The increase was driven by an upward trend in sugar and other commodity groups' prices. The International Rice Price Index averaged 227 points, increasing by 1.3% on a month-on-month basis.

Figure 1: FAO Food Price Index and Rice Price Index



Source: FAO, <http://www.fao.org/worldfoodsituation/wfs-home/foodpricesindex/en/>

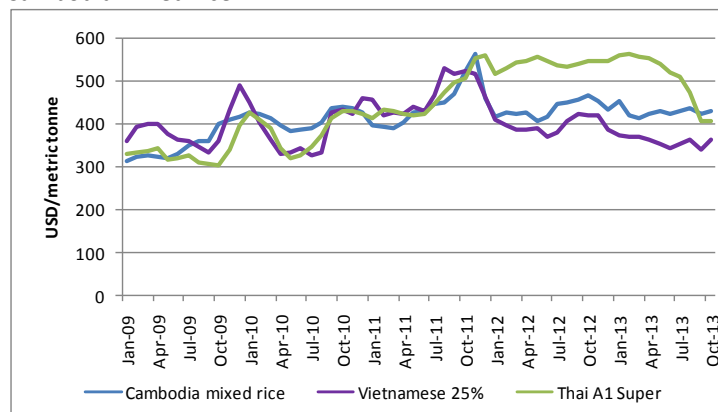
CONTENT

Overview.....	1
International Food and Rice Prices.....	1
Regional Rice Wholesale Prices.....	1
Cambodia Consumer Price Index (CPI).....	2
Local Food Commodity Wholesale Prices.....	2
Price Monitoring and Forecasting.....	2
Local Food Commodity Retail Prices.....	2
Food Purchasing Power.....	3
Appendix 1: Sentinel Surveillance Market Sites.....	4
Appendix 2: Price of Food Commodities by Market.....	5

Regional Rice Wholesale Prices

In October 2013, the f.o.b. prices³ of Thai A1 Super white rice (100% broken) and Vietnamese white rice (25% broken) were 405 USD/mt and 362 USD/mt, respectively (Figure 2).

Figure 2: Export price of Thai and Vietnamese white rice and Cambodia mixed rice⁴



Source: FAO, <http://www.fao.org/es/esc/prices/PricesServlet.jsp?lang=en>

¹ This publication has been produced jointly since September 2011.

² The FAO Food Price Index consists of the average of commodity group price indices (i.e. meat, dairy, cereals, oils/fats, and sugar) weighted with the average export shares of each of the groups for 2002-2004.

³ Free on board (f.o.b.) price includes all charges up to the placing of goods on board a ship at the port of departure specified by the buyer.

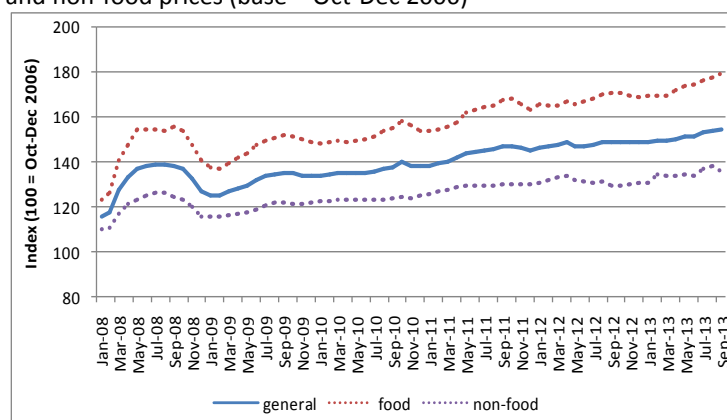
⁴ Mixed rice is considered a low-quality type of rice.

The export price of Thai A1 Super white rice decreased by 0.2% month-on-month and 25.6% year-on-year. The price of Vietnamese white rice increased by 6.5% month-on-month, but decreased by 13.8% on a year-on-year basis. According to the Thai Rice Exporters Association Thailand will be selling around 600,000 mt of rice in October. Vietnamese rice exports stand at around 5.7 million mt, down by 12% compared to last year. According to the Vietnam Food Association, Vietnam is also facing competition from Thailand, which is aggressively lowering prices to boost rice exports. The Cambodian Ministry of Commerce reported that rice exports increased by 103% compared to the same period last year; an increase which was driven by rising demand for Cambodian rice and increased investment in rice milling capacity.

Cambodia Consumer Price Index (CPI)

The general Consumer Price Index (CPI)⁵ measures the cost of a consumption basket composed of 259 items. Each item is weighted based on their importance in an average household's expenditure⁶. In September 2013, the general CPI averaged 154.9 points, an increase of 0.7% on a month-on-month basis. The inflation rate, as measured by the year-on-year increase in the Consumer Price Index, was 3.8%. Non-food prices averaged 136.1 points and decreased by 1.5% month-on-month. Gasoline prices decreased by 1.6% month-on-month and 5.3% on a year-on-year basis. The Food Price Index measures the cost of the food items in the general CPI's consumption basket. Food items make up 43.2% of the total consumption basket. In September 2013, the food price index was 179.7, an increase of 1.2% month-on-month and 5.3% year-on-year (Figure 3).

Figure 3: Relative change in general consumer prices, food prices and non-food prices (base = Oct-Dec 2006)

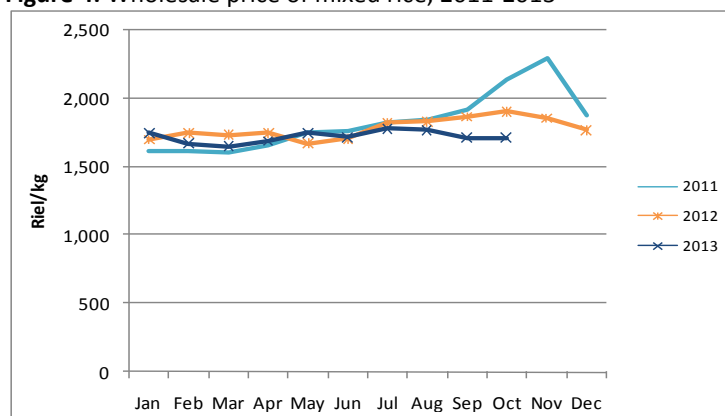


Source: National Institute of Statistics

Local Food Commodity Wholesale Prices

Data⁷ from AMO MAFF shows that the average wholesale price of mixed rice was 1,720 riel/kg, an increase of 0.2% month-on-month and 10.0% on a year-on-year basis in October 2013 (Figure 4). Adjusting for the annual inflation rate, the real wholesale price of mixed rice was 13.9% lower year-on-year.

Figure 4: Wholesale price of mixed rice, 2011-2013



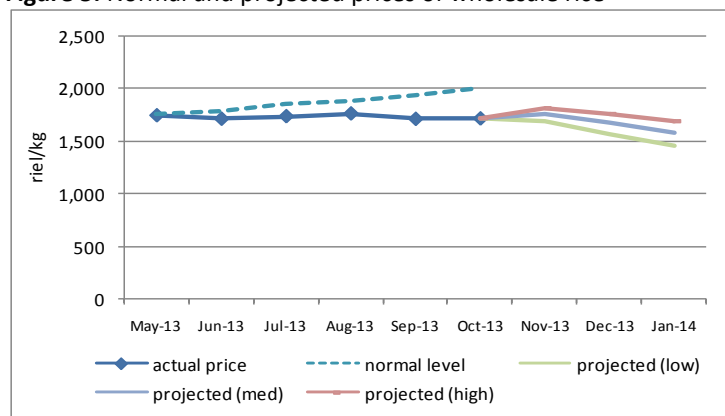
Source: AMO MAFF, <http://www.agriculturalmarketinformation.org.kh>

Price Monitoring and Forecasting

FAO's price monitoring tool compares recent actual wholesale prices from AMO MAFF with "normal" price levels. The normal price level takes into account historical price levels and adjusts for inflation and seasonal factors. A discrepancy between current actual prices and "normal" prices indicates that current prices are higher/lower than what would be expected. In October 2013, the actual wholesale price of mixed rice was 14.3% lower than the expected normal historical price⁸.

The price monitoring tool also projects prices based on the current price, current inflation rate and seasonal factors. The high and low bands are set so that actual prices will fall within the range 80% of the time. Prices for the next three months (November, December and January) were projected. The wholesale rice prices are expected to ease due to the beginning of the main harvest season, as rice supplies are expected to increase in local markets. (Figure 5).

Figure 5: Normal and projected prices of wholesale rice



Source: AMO, WFP, FAO

Local Food Commodity Retail Prices

In October 2013, the average retail price of the lowest quality rice⁹ in rural and urban areas was 1,725 riel/kg and 1,829 riel/kg, respectively (Figure 6). On a month-on-month basis, rice prices in rural and urban areas decreased by 2.7% and 3.9%, respectively (Figure 6).

⁵ The CPI is collected and reported by the National Institute of Statistics (NIS). Data from October 2013 was not available at the time of publication.

⁶ Relative item expenditure weights are derived from the 2004 Cambodia Socio-Economic Survey and adjusted to October-December 2006 price levels.

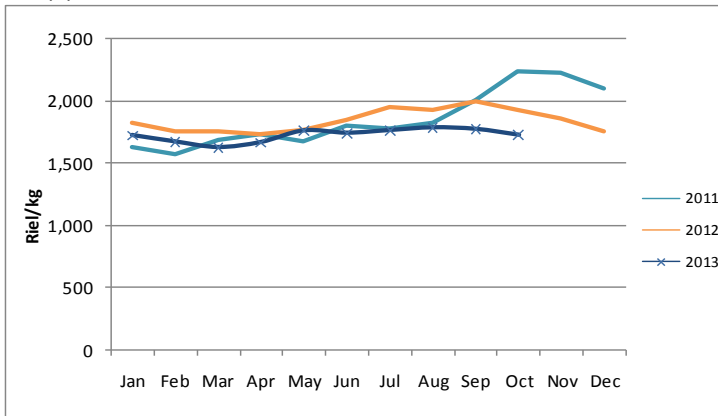
⁷ From provincial markets in Kampong Chhnang, Takeo, Siem Reap, Prey Veng, Phnom Penh, Kampot, Battambang, Banteay Meanchey, and Kampong Cham

⁸ 2008 prices are excluded from the FAO price monitoring tool analysis as the food price crisis in mid-2008 distorts the seasonal factors.

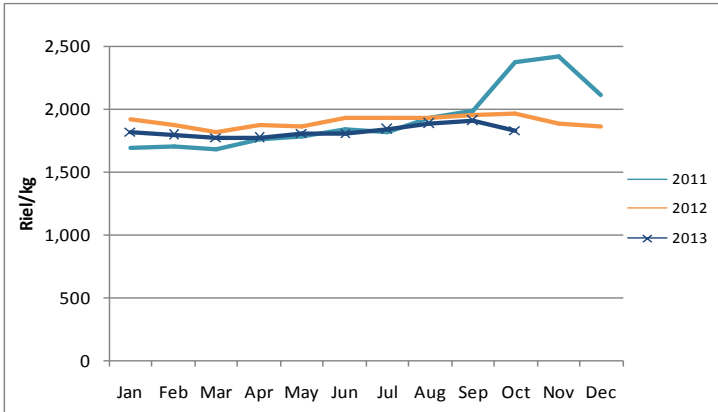
⁹ Mixed rice, IR rice and Banla Pdao rice

Figure 6 (a)(b): Average price of lowest quality rice, 2011-2013

(a) Rural areas



(b) Urban areas



Source: WFP

On a year-on-year basis, nominal retail rice prices in rural and urban areas decreased by 10.4% and 6.6%, respectively. Taking the inflation rate into account, the year-on-year real retail price of rice in rural and urban areas decreased by 14.3% and 10.5%, respectively. Rice traders reported that the downward price pressure is caused by increased surplus of rice.

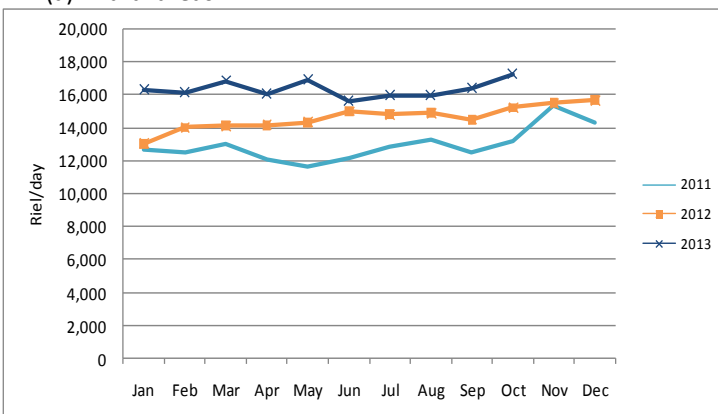
Retail prices of other food commodities (i.e. second quality rice, vegetable oil, smoked fish, fresh fish, pork, and duck eggs) in each of the 10 rural and 11 urban markets are presented in Appendix 2.

Food Purchasing Power

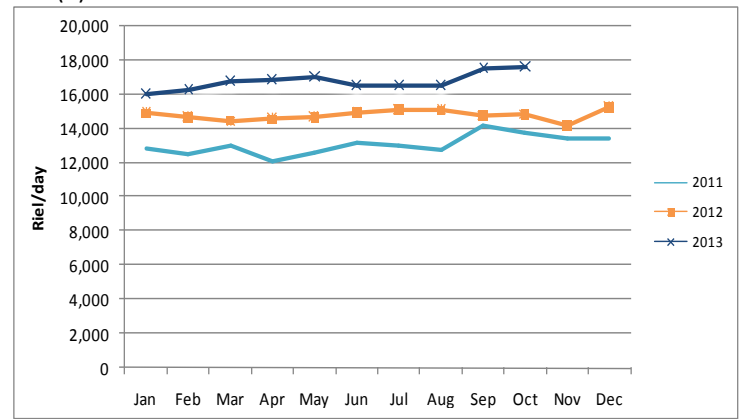
Daily wages of unskilled workers engaged in rice and non-rice farming and construction work are monitored by WFP on a monthly basis. In October 2013, the average wage of unskilled labor was 17,281 riel/day in rural areas and 17,666 riel/day in urban areas, an increase of 5.1% and 0.6% on a month-on-month basis, respectively (Figure 7).

Figure 7(a)(b): Daily wage of unskilled labor

(a) Rural areas



(b) Urban areas



Source: WFP

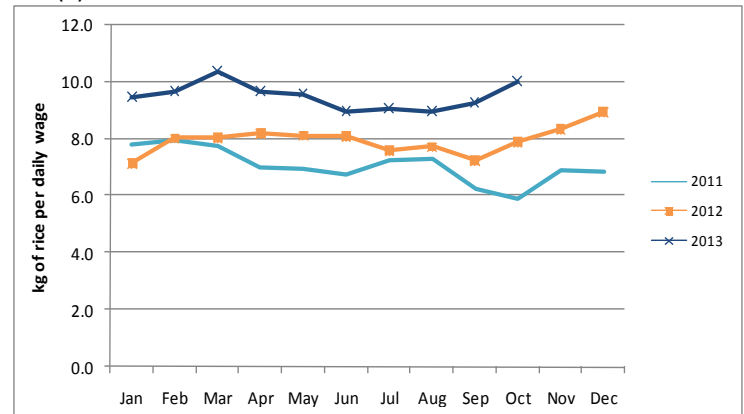
Key informants interviews suggest that the unskilled wage rate increased due to reduced availability of labor in both rural and urban areas as a result of labor migration to work in factories, which is seen as more stable and not dependent on seasonality.

Terms of trade (ToT) is used to assess household food purchasing power by taking the ratio of two different components. In the Cambodian context, the ToT takes the ratio of the daily wage rates of unskilled laborers and the retail price of lowest quality rice in the market. This gives an indication of the amount of rice that an unskilled wage laborer can purchase with a daily wage.

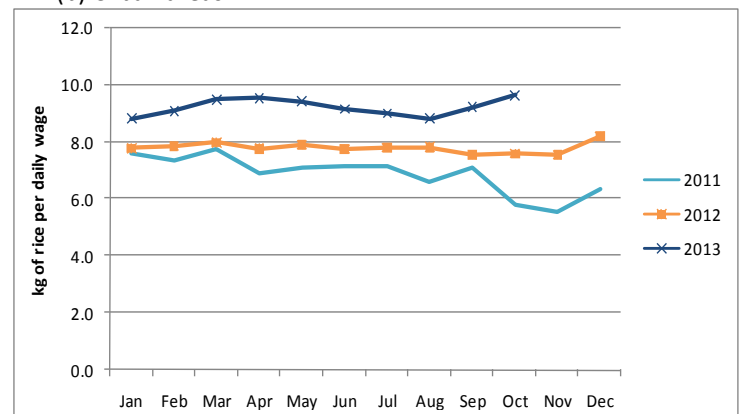
In October 2013, the ToT in rural areas was 10 kg/day and 9.7 kg/day in urban areas; a month-on-month increase of 8.0% and 4.7%, respectively. In rural and urban areas, the increase in unskilled wages and downward pressure of rice prices caused an improvement in the rice purchasing power of vulnerable households dependent on unskilled labor. (Figure 8).

Figure 8(a)(b): Terms of Trade of unskilled labor and rice

(a) Rural areas

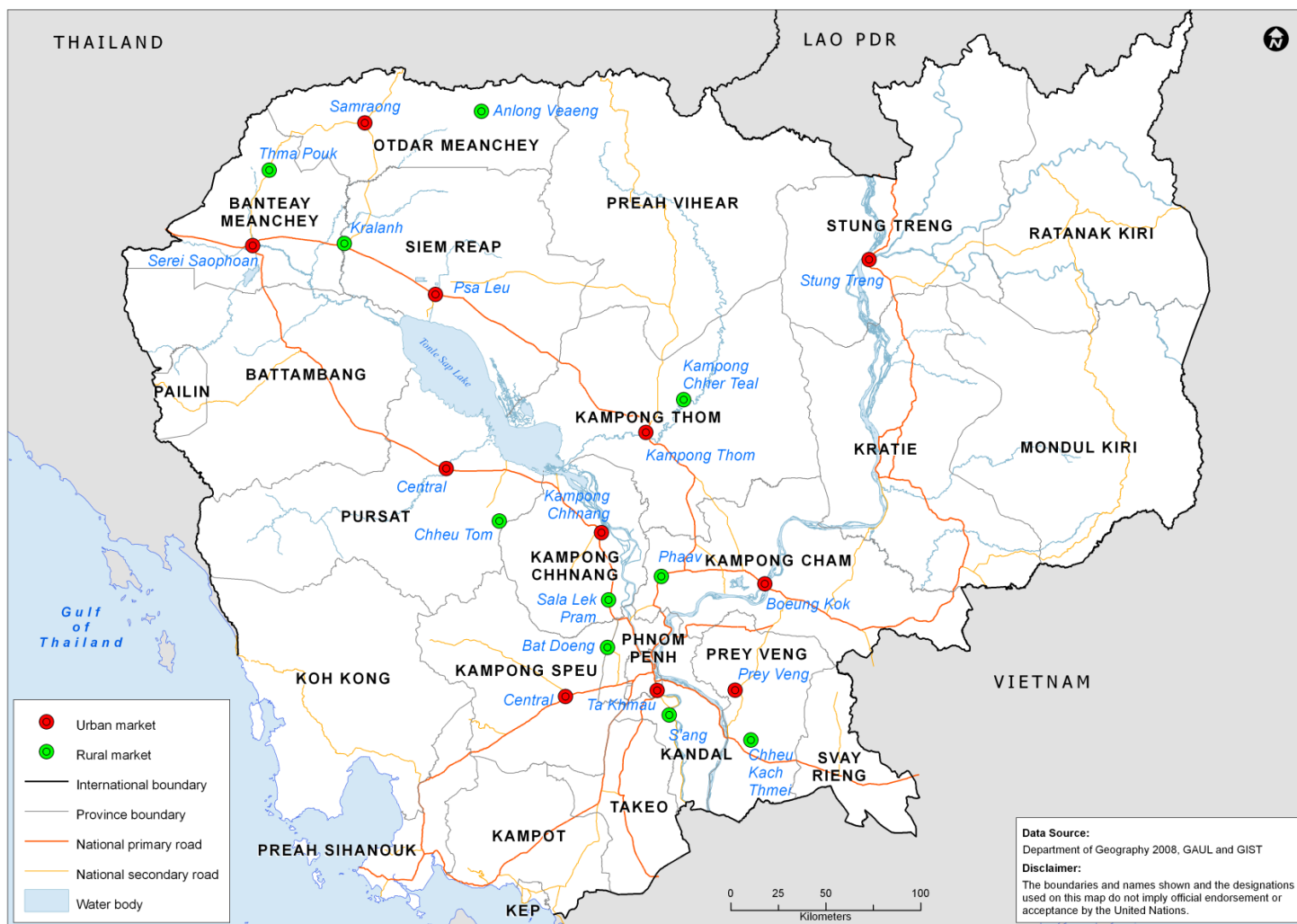


(b) Urban areas



Source: WFP

Appendix 1: Location of sentinel market sites in urban and rural areas in Cambodia



Contacts

Agricultural Marketing Office

Department of Planning and Statistics, Ministry of Agriculture,
Forestry and Fisheries

Mr. Meach Yady (meachyady@gmail.com)

<http://www.agriculturalmarketinformation.org.kh>

United Nations World Food Programme

Vulnerability Analysis and Mapping (VAM) Unit
Yav Long (Yav.Long@wfp.org)

Rukhshona Rajabova (rukhshona.rajabova@wfp.org)

Chanvibol Choer (Chanvibol.Choer@wfp.org)

www.wfp.org/countries/cambodia

Appendix 2(a)(b): Price of food commodities by market
(a) Rural markets

Food Item	Province	Market	price (Riel/kg)	price change (%)			direction of change		
				1 month	3 months	1 year	1 month	3 months	1 year
Second quality rice	Banteay Meanchey	Thma Puok	-	-	-	-	-	-	-
	Siem Reap	Kralanh	-	-	-	-	-	-	-
	Oddar Meanchey	Anlong Veng	2,400	0.0	5.9	-	→	→	-
	Kampong Cham	Pha'av	1,767	-1.9	1.0	-9.4	→	→	→
	Kampong Thom	Kampong Chhouteal	1,800	0.0	0.0	-	→	→	-
	Prey Veng	Chheu Kach Thmei	-	-	-	-	-	-	-
	Kampong Chhnang	Sala Lek Pram	2,000	0.0	9.1	-6.3	→	→	→
	Kampong Speu	Bat Doeng	1,900	-	-30.9	-	-	↓	-
	Pursat	Chheu Tom	2,000	-	-	-	-	-	-
	Stung Treng	n/a	-	-	-	-	-	-	-
Kandal	S'ang	2,000	0.0	-7.0	-11.8	→	→	→	
Lowest quality rice	Banteay Meanchey	Thma Puok	2,050	2.5	2.5	-2.4	→	→	→
	Siem Reap	Kralanh	1,400	-4.5	-17.6	-23.4	→	↓	↓
	Oddar Meanchey	Anlong Veng	1,767	1.9	0.0	-11.7	→	→	→
	Kampong Cham	Pha'av	1,633	2.1	4.3	-2.8	→	→	→
	Kampong Thom	Kampong Chhouteal	-	-	-	-	-	-	-
	Prey Veng	Chheu Kach Thmei	1,550	-5.1	0.0	-7.0	↓	→	→
	Kampong Chhnang	Sala Lek Pram	1,833	1.9	5.8	-3.5	→	→	→
	Kampong Speu	Bat Doeng	2,000	0.0	0.0	-7.0	→	→	→
	Pursat	Chheu Tom	1,500	-25.0	-15.1	-23.7	↓	↓	↓
	Stung Treng	n/a	-	-	-	-	-	-	-
Kandal	S'ang	1,800	3.8	0.0	-10.0	→	→	→	
Vegetable oil	Banteay Meanchey	Thma Puok	6,044	3.1	0.0	-7.0	→	→	→
	Siem Reap	Kralanh	5,195	-5.5	-3.5	-5.5	↓	→	→
	Oddar Meanchey	Anlong Veng	5,500	3.1	0.0	-8.3	→	→	→
	Kampong Cham	Pha'av	5,167	-6.1	9.2	3.3	↓	→	→
	Kampong Thom	Kampong Chhouteal	4,833	-3.3	0.7	-15.2	→	→	↓
	Prey Veng	Chheu Kach Thmei	4,800	3.6	-12.7	-12.7	→	↓	→
	Kampong Chhnang	Sala Lek Pram	5,600	0.0	1.8	3.7	→	→	→
	Kampong Speu	Bat Doeng	4,733	-2.1	-0.4	-16.0	→	→	↓
	Pursat	Chheu Tom	4,867	-2.7	-3.9	-13.1	→	→	→
	Stung Treng	n/a	-	-	-	-	-	-	-
Kandal	S'ang	4,633	-2.1	-0.7	-16.8	→	→	↓	
Smoked fish	Banteay Meanchey	Thma Puok	-	-	-	-	-	-	-
	Siem Reap	Kralanh	-	-	-	-	-	-	-
	Oddar Meanchey	Anlong Veng	-	-	-	-	-	-	-
	Kampong Cham	Pha'av	-	-	-	-	-	-	-
	Kampong Thom	Kampong Chhouteal	-	-	-	-	-	-	-
	Prey Veng	Chheu Kach Thmei	-	-	-	-	-	-	-
	Kampong Chhnang	Sala Lek Pram	18,000	0.0	-10.0	-	→	→	-
	Kampong Speu	Bat Doeng	19,000	0.9	-	-8.8	→	-	→
	Pursat	Chheu Tom	-	-	-	-	-	-	-
	Stung Treng	n/a	-	-	-	-	-	-	-
Kandal	S'ang	-	-	-	-	-	-	-	

Food Item	Province	Market	price (Riel/kg)	price change (%)			direction of change		
				1 month	3 months	1 year	1 month	3 months	1 year
Fresh fish	Banteay Meanchey	Thma Puok	-	-	-	-	-	-	-
	Siem Reap	Kralanh	-	-	-	-	-	-	-
	Oddar Meanchey	Anlong Veng	4,667	0.0	-3.4	-	→	→	-
	Kampong Cham	Pha'av	5,500	0.0	6.5	10.0	→	→	→
	Kampong Thom	Kampong Chhouteal	-	-	-	-	-	-	-
	Prey Veng	Chheu Kach Thmei	6,000	-	4.3	31.4	-	→	↑
	Kampong Chhnang	Sala Lek Pram	5,600	1.8	-1.2	-	→	→	-
	Kampong Speu	Bat Doeng	5,500	0.0	10.0	10.0	→	→	→
	Pursat	Chheu Tom	6,000	0.0	-14.3	20.0	→	↓	↑
	Stung Treng	n/a	-	-	-	-	-	-	-
Kandal	S'ang	5,500	-4.3	0.0	-15.4	→	→	↓	
Pork with fat	Banteay Meanchey	Thma Puok	15,000	0.0	0.0	0.0	→	→	→
	Siem Reap	Kralanh	12,000	0.0	-2.7	20.0	→	→	↑
	Oddar Meanchey	Anlong Veng	11,667	-2.8	-2.8	16.7	→	→	↑
	Kampong Cham	Pha'av	14,000	0.0	5.0	0.0	→	→	→
	Kampong Thom	Kampong Chhouteal	12,000	0.0	0.0	20.0	→	→	↑
	Prey Veng	Chheu Kach Thmei	12,333	2.8	-5.1	2.8	→	→	→
	Kampong Chhnang	Sala Lek Pram	12,333	2.8	2.8	8.8	→	→	→
	Kampong Speu	Bat Doeng	13,000	0.0	0.0	8.3	→	→	→
	Pursat	Chheu Tom	14,000	-6.7	-5.6	1.2	↓	→	→
	Stung Treng	n/a	-	-	-	-	-	-	-
Kandal	S'ang	14,667	-2.2	4.8	7.3	→	→	→	
Duck egg	Banteay Meanchey	Thma Puok	700	0.0	7.7	27.3	→	→	↑
	Siem Reap	Kralanh	610	5.8	8.9	22.0	↑	→	↑
	Oddar Meanchey	Anlong Veng	600	0.0	5.9	20.0	→	→	↑
	Kampong Cham	Pha'av	537	-1.8	-10.6	11.8	→	↓	→
	Kampong Thom	Kampong Chhouteal	593	0.0	4.7	-	-	→	-
	Prey Veng	Chheu Kach Thmei	567	-5.6	0.0	9.0	↓	→	→
	Kampong Chhnang	Sala Lek Pram	587	0.6	7.3	7.3	→	→	→
	Kampong Speu	Bat Doeng	620	-	3.3	8.8	-	→	→
	Pursat	Chheu Tom	580	-2.8	13.7	28.9	→	↑	↑
	Stung Treng	n/a	-	-	-	-	-	-	-
Kandal	S'ang	593	-2.2	1.1	23.6	→	→	↑	

- ↑ Price increase above normal fluctuation
- Normal price fluctuation
- ↓ Price decrease below normal fluctuation
- Commodity not available in reporting month

Price fluctuation is considered normal if change within:
5% for month, 10% for 3 months, 15% for 1 year

(b) Urban markets

Food Item	Province	Market	price (Riel/kg)	price change (%)			direction of change		
				1 month	3 months	1 year	1 month	3 months	1 year
Second quality rice	Banteay Meanchey	Serei Saophoan	2,600	4.0	4.0	8.3	→	→	→
	Siem Reap	Psa Leu	2,300	-1.4	-1.4	30.2	→	→	↑
	Oddar Meanchey	Samraong	2,400	1.4	23.1	-	→	↑	-
	Kampong Cham	Boeung Kok	1,967	1.7	-8.5	3.5	→	→	→
	Kampong Thom	Central	1,600	-11.1	-12.7	-17.2	↓	↓	↓
	Prey Veng	Central	2,167	8.3	6.6	1.6	↑	→	→
	Kampong Chhnang	Central	2,000	11.1	-16.7	-25.9	↑	↓	↓
	Kampong Speu	Central	2,000	-1.6	-20.0	-18.9	→	↓	↓
	Pursat	Central	2,000	-6.3	-14.3	-10.4	↓	↓	→
	Stung Treng	Stung Treng	-	-	-	-	-	-	-
Kandal	Ta Khmao	2,200	0.0	0.0	-5.7	→	→	→	
Lowest quality rice	Banteay Meanchey	Serei Saophoan	1,967	-1.7	-1.7	-6.3	→	→	→
	Siem Reap	Psa Leu	1,667	-2.0	-3.8	-4.8	→	→	→
	Oddar Meanchey	Samraong	2,000	0.0	9.1	-11.8	→	→	→
	Kampong Cham	Boeung Kok	-	-	-	-	-	-	-
	Kampong Thom	Central	-	-	-	-	-	-	-
	Prey Veng	Central	1,600	-15.8	-15.8	-8.6	↓	↓	→
	Kampong Chhnang	Central	1,800	0.0	-1.8	-12.9	→	→	→
	Kampong Speu	Central	1,800	-5.3	-10.0	-11.5	↓	→	→
	Pursat	Central	1,800	-5.3	-12.2	-5.3	↓	↓	→
	Stung Treng	Stung Treng	-	-	-	-	-	-	-
Kandal	Ta Khmao	2,000	0.0	0.0	-3.2	→	→	→	
Vegetable oil	Banteay Meanchey	Serei Saophoan	5,495	0.7	0.0	-11.4	→	→	→
	Siem Reap	Psa Leu	5,000	1.4	2.7	-6.2	→	→	→
	Oddar Meanchey	Samraong	5,500	3.1	-2.9	-10.8	→	→	→
	Kampong Cham	Boeung Kok	5,333	1.9	6.7	6.7	→	→	→
	Kampong Thom	Central	5,000	0.0	0.0	-9.1	→	→	→
	Prey Veng	Central	5,000	-3.2	-4.5	-2.6	→	→	→
	Kampong Chhnang	Central	4,700	-0.7	0.7	-9.0	→	→	→
	Kampong Speu	Central	4,667	2.2	-1.4	-13.6	→	→	→
	Pursat	Central	5,000	-12.3	-10.7	-12.8	↓	↓	→
	Stung Treng	Stung Treng	-	-	-	-	-	-	-
Kandal	Ta Khmao	4,900	-2.0	-2.0	-16.5	→	→	↓	
Smoked fish	Banteay Meanchey	Serei Saophoan	-	-	-	-	-	-	-
	Siem Reap	Psa Leu	-	-	-	-	-	-	-
	Oddar Meanchey	Samraong	25,000	0.0	-	-	→	-	-
	Kampong Cham	Boeung Kok	-	-	-	-	-	-	-
	Kampong Thom	Central	-	-	-	-	-	-	-
	Prey Veng	Central	-	-	-	-	-	-	-
	Kampong Chhnang	Central	-	-	-	-	-	-	-
	Kampong Speu	Central	34,800	-	26.5	58.2	-	↑	↑
	Pursat	Central	-	-	-	-	-	-	-
	Stung Treng	Stung Treng	-	-	-	-	-	-	-
Kandal	Ta Khmao	-	-	-	-	-	-	-	

Food Item	Province	Market	price (Riel/kg)	price change (%)			direction of change		
				1 month	3 months	1 year	1 month	3 months	1 year
Fresh fish	Banteay Meanchey	Serei Saophoan	-	-	-	-	-	-	-
	Siem Reap	Psa Leu	5,000	3.4	0.0	-	→	→	-
	Oddar Meanchey	Samraong	4,800	2.1	-1.4	-4.0	→	→	→
	Kampong Cham	Boeung Kok	5,500	1.2	0.0	10.0	→	→	→
	Kampong Thom	Central	-	-	-	-	-	-	-
	Prey Veng	Central	6,000	9.1	0.0	-7.7	↑	→	→
	Kampong Chhnang	Central	5,833	-2.8	-13.8	16.7	→	↓	↑
	Kampong Speu	Central	6,000	5.9	0.0	20.0	↑	→	↑
	Pursat	Central	5,500	-8.3	-10.6	-	↓	↓	-
	Stung Treng	Stung Treng	-	-	-	-	-	-	-
Kandal	Ta Khmao	6,000	0.0	0.0	0.0	→	→	→	
Pork with fat	Banteay Meanchey	Serei Saophoan	15,000	4.7	4.7	0.0	→	→	→
	Siem Reap	Psa Leu	12,000	-7.7	0.0	0.0	↓	→	→
	Oddar Meanchey	Samraong	14,667	0.0	12.8	7.3	→	↑	→
	Kampong Cham	Boeung Kok	15,000	0.0	7.1	9.8	→	→	→
	Kampong Thom	Central	13,333	2.6	11.1	21.2	→	↑	↑
	Prey Veng	Central	14,333	10.3	10.3	-4.4	↑	↑	→
	Kampong Chhnang	Central	14,667	0.0	4.8	0.0	→	→	→
	Kampong Speu	Central	14,000	0.0	7.7	16.7	→	→	↑
	Pursat	Central	14,000	0.0	0.0	5.0	→	→	→
	Stung Treng	Stung Treng	-	-	-	-	-	-	-
Kandal	Ta Khmao	16,000	-2.0	6.7	6.7	→	→	→	
Duck egg	Banteay Meanchey	Serei Saophoan	567	-11.9	7.6	13.3	↓	→	→
	Siem Reap	Psa Leu	617	-5.1	12.1	23.3	↓	↑	↑
	Oddar Meanchey	Samraong	627	0.0	7.4	22.9	→	→	↑
	Kampong Cham	Boeung Kok	593	-1.1	-1.1	7.9	→	→	→
	Kampong Thom	Central	600	-	0.0	-	-	→	-
	Prey Veng	Central	577	-	-3.9	25.4	-	→	↑
	Kampong Chhnang	Central	587	-3.8	1.1	18.9	→	→	↑
	Kampong Speu	Central	700	16.7	21.4	40.0	↑	↑	↑
	Pursat	Central	593	1.7	10.6	31.9	→	↑	↑
	Stung Treng	Stung Treng	-	-	-	-	-	-	-
Kandal	Ta Khmao	600	9.1	1.7	21.6	↑	→	↑	

- ↑ Price increase above normal fluctuation
- Normal price fluctuation
- ↓ Price decrease below normal fluctuation
- Commodity not available in reporting month

Price fluctuation is considered normal if change within:
5% for month, 10% for 3 months, 15% for 1 year