

Yemen Market Price Update

Week 2: May 2015

SUMMARY OF MARKETS FOR MAY 2015 (WEEK 2)

- Fuel prices dominate the change with prices reaching over 1,350 Yemen Riyals (YER) per litre for petrol with sharpest increase up to seven-fold compared to the pre-crisis period. More importantly fuel is almost universally unavailable.
- Availability of food commodities has been deteriorated further in the crisis-affected areas. Staples such as wheat flour is only available on the black market in many of the monitored markets.
- Where available, food prices remain well above the pre-crisis average, though the price increase has reportedly been moderated compared to the previous week.

Availability

	Wheat Flour	Sugar	Veg Oil	Beans	Onion	Cooking gas	Petrol	Diesel
Abyan	SAV	NA	NA	NA	NA	NA	NA	NA
Addaleh	SAV	SAV	NA	NA	NA	SAV	NA	NA
Aden	NA	NA	NA	NA	NA	NA	NA	NA
Al Baidha	SAV	NA	SAV	NA	AV	NA	NA	NA
Al Mahra	SAV	AV	AV	NA	AV	SAV	SAV	SAV
Al Mahweet	AV	AV	AV	AV	AV	SAV	SAV	SAV
Hadramout (Al Mukalla)	SAV	AV	AV	AV	SAV	SAV	SAV	SAV
Amran	SAV	AV	AV	SAV	AV	SAV	SAV	SAV
Dhamar	SAV	SAV	SAV	AV	AV	SAV	NA	NA
Hajja	SAV	SAV	SAV	SAV	SAV	SAV	SAV	SAV
Hodieda	SAV	AV	SAV	AV	AV	SAV	NA	NA
Ibb	SAV	SAV	SAV	SAV	AV	SAV	NA	NA
Laheg	SAV	SAV	NA	NA	NA	SAV	NA	NA
Mareb	SAV	SAV	SAV	NA	NA	SAV	SAV	SAV
Sa'ada	SAV	SAV	NA	NA	SAV	NA	NA	NA
Sana'a	SAV	AV	AV	SAV	AV	SAV	NA	NA
Sana'a city	AV	AV	AV	SAV	AV	SAV	NA	NA
Hadramout (Sayoun)	SAV	AV	AV	SAV	AV	SAV	SAV	SAV
Shabwa	SAV	SAV	SAV	NA	SAV	SAV	SAV	SAV
Soqatra	SAV	SAV	SAV	NA	NA	NA	AV	AV
Taiz	SAV	SAV	SAV	SAV	NA	SAV	NA	NA

AV Generally Available
SAV Sporadically Available
NA Not Available

Summary of retail prices (YER) of key commodities

Wheat Flour

Current Ave. Price: **190**
Min **128** Max **250**
Ave. % Change: **-7%**

There is a general downward trend, although prices are well above pre-crisis prices. Availability is also becoming an important issue for a staple commodity with black market trade evident.

Onion

Current Ave. Price: **249**
Min **150** Max **750**
Ave. % Change: **-5%**

The general trend is downwards with availability being an important issue in many governorates. Prices remain well above pre-crisis levels

Red Beans

Current Ave. Price: **354**
Min **270** Max **405**
Ave. % Change: **-3%**

Again, the trend is downwards from last week. Many markets noted no availability. Min price is found in Amran, max in Hodieda

Vegetable Oil

Current Ave. Price: **326**
Min **281** Max **410**
Ave. % Change: **-16%**

Large drop from last week's price. Availability still an issue in many areas. The average price is now below pre-crisis levels. Min price in Hodieda

Sugar

Current Ave. Price: **260**
Min **200** Max **375**
Ave. % Change: **2%**

Black market trading evident. Price range wide with Hodieda lowest and Addaleh highest (black market).

Cooking Gas

Current Ave. Price: **4591**
Min **150** Max **1100**
Ave. % Change: **52%**

Mainly traded on the black market with massive increases from last week. Current ave price is twice that of the pre-crisis period

Petrol:

Current Ave. Price: **795**
Ave. % Change: **22%** Min **150** Max **1100**

Almost universally unavailable or only available on the black market. The low prices in Soqatra bring down the mean and overall change (max is almost 700%). Even if petrol is available it is not enough in quantity

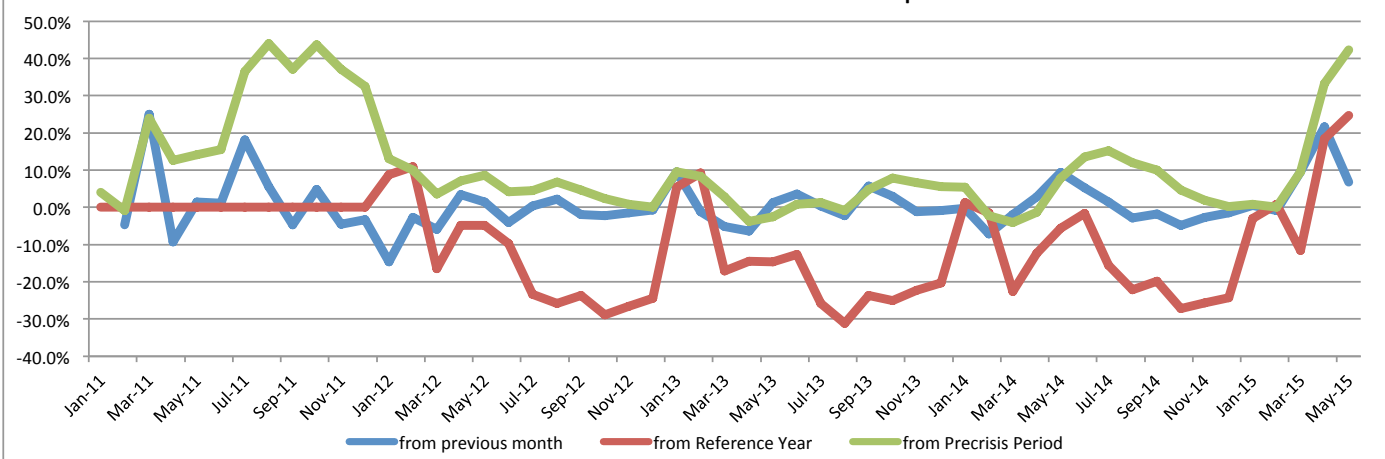
Diesel:

Current Ave. Price: **722**
Min **3300** Max **6500**

Ave. % Change: **21%**
As with Petrol the lowest price was in Soqatra (bringing down the ave.), the only place fuel was generally available.

The current average price is the running average for the month. The price changes indicated are changes from the previous month (from prices from all markets available). The table on next page presents more details. The partial food basket (one month / person) consists of Wheat Flour (7.24kg), Rice (1.06kg), Oil (0.65l), Lentils (0.37kg), Potato (0.83kg), Sugar (1.98kg)

% Difference of Partial Food Basket Costs between periods





Yemen Market Price Update

Week 2: May 2015

Market Area	Commodity	Current Month Ave. to date	Change of Month to Date Ave				Direction of Change		
			1 M	Pre-Crisis	2011 (Yr Ave)	Within Month Trend	1 M	Pre-Crisis	2011 (Yr Ave)
Abyan	Wheat flour (kg)	220	N/A	61%	38%	▶	▶	▶	
	Sugar (kg)	N/A	N/A	N/A	N/A				
	Veg. Oil (litre)	N/A	N/A	N/A	N/A				
	Red beans (kg)	N/A	N/A	N/A	N/A				
	Onion (kg)	N/A	N/A	N/A	N/A				
	Petrol (Litre)	N/A	N/A	N/A	N/A				
	Diesel (Litre)	N/A	N/A	N/A	N/A				
	Cooking Gas (Bottle)	N/A	N/A	N/A	N/A				
Addaleh	Wheat flour (kg)	240	N/A	75%	50%	▶	▶	▶	
	Sugar (kg)	375	N/A	75%	33%				
	Veg. Oil (litre)	N/A	N/A	N/A	N/A				
	Red beans (kg)	N/A	N/A	N/A	N/A				
	Onion (kg)	N/A	N/A	N/A	N/A				
	Petrol (Litre)	N/A	N/A	N/A	N/A				
	Diesel (Litre)	N/A	N/A	N/A	N/A				
	Cooking Gas (Bottle)	6500	N/A	238%	116%	▶	▶	▶	
Aden	Wheat flour (kg)	250	9%	83%	56%	▶	▶	▶	
	Sugar (kg)	280	11%	31%	-1%				
	Veg. Oil (litre)	410	4%	20%	-8%	▶	▶	▶	
	Red beans (kg)	400	5%	28%	43%	▶	▶	▶	
	Onion (kg)	290	10%	34%	83%	▶	▶	▶	
	Petrol (Litre)	1000	50%	532%	557%	▶	▶	▶	
	Diesel (Litre)	900	49%	500%	507%	▶	▶	▶	
	Cooking Gas (Bottle)	4000	27%	108%	33%	▶	▶	▶	
Al Baidha	Wheat flour (kg)	128	N/A	-6%	-20%	▶	▶	▶	
	Sugar (kg)	N/A	N/A	N/A	N/A				
	Veg. Oil (litre)	323	N/A	-5%	-27%	▶	▶	▶	
	Red beans (kg)	N/A	N/A	N/A	N/A				
	Onion (kg)	225	N/A	4%	42%	▶	▶	▶	
	Petrol (Litre)	N/A	N/A	N/A	N/A				
	Diesel (Litre)	N/A	N/A	N/A	N/A				
	Cooking Gas (Bottle)	N/A	N/A	N/A	N/A				
Al Mahra	Wheat flour (kg)	160	N/A	17%	0%	▶	▶	▶	
	Sugar (kg)	200	N/A	-7%	-29%	▶	▶	▶	
	Veg. Oil (litre)	308	N/A	-10%	-31%	▶	▶	▶	
	Red beans (kg)	N/A	N/A	N/A	N/A				
	Onion (kg)	190	N/A	-12%	20%	▶	▶	▶	
	Petrol (Litre)	675	N/A	326%	343%	▶	▶	▶	
	Diesel (Litre)	625	N/A	317%	321%	▶	▶	▶	
	Cooking Gas (Bottle)	4500	N/A	134%	49%	▶	▶	▶	
Al Mahweet	Wheat flour (kg)	130	N/A	-5%	-19%	▶	▶	▶	
	Sugar (kg)	219	N/A	2%	-23%	▶	▶	▶	
	Veg. Oil (litre)	288	N/A	-16%	-35%	▶	▶	▶	
	Red beans (kg)	270	N/A	-14%	-4%	▶	▶	▶	
	Onion (kg)	235	N/A	8%	48%	▶	▶	▶	
	Petrol (Litre)	1350	N/A	753%	786%	▶	▶	▶	
	Diesel (Litre)	1100	N/A	633%	642%	▶	▶	▶	
	Cooking Gas (Bottle)	3750	N/A	95%	24%	▶	▶	▶	
Amran	Wheat flour (kg)	164	-15%	20%	2%	▶	▶	▶	
	Sugar (kg)	228	2%	6%	-20%	▶	▶	▶	
	Veg. Oil (litre)	344	-5%	1%	-23%	▶	▶	▶	
	Red beans (kg)	273	-15%	-13%	-3%	▶	▶	▶	
	Onion (kg)	240	-4%	11%	51%	▶	▶	▶	
	Petrol (Litre)	1100	68%	595%	622%	▶	▶	▶	
	Diesel (Litre)	1000	65%	567%	574%	▶	▶	▶	
	Cooking Gas (Bottle)	4525	56%	135%	50%	▶	▶	▶	
Dhamar	Wheat flour (kg)	130	N/A	-5%	-19%	▶	▶	▶	
	Sugar (kg)	260	N/A	21%	-8%	▶	▶	▶	
	Veg. Oil (litre)	283	N/A	-17%	-36%	▶	▶	▶	
	Red beans (kg)	350	N/A	12%	25%	▶	▶	▶	
	Onion (kg)	225	N/A	4%	42%	▶	▶	▶	
	Petrol (Litre)	N/A	N/A	N/A	N/A				
	Diesel (Litre)	N/A	N/A	N/A	N/A				
	Cooking Gas (Bottle)	3750	N/A	95%	24%	▶	▶	▶	
Hadramout	Wheat flour (kg)	180	N/A	32%	13%	▶	▶	▶	
	Sugar (kg)	225	N/A	5%	-20%	▶	▶	▶	
	Veg. Oil (litre)	281	N/A	-18%	-37%	▶	▶	▶	
	Red beans (kg)	340	N/A	9%	21%	▶	▶	▶	
	Onion (kg)	210	N/A	-3%	32%	▶	▶	▶	
	Petrol (Litre)	150	N/A	-5%	-2%	▶	▶	▶	
	Diesel (Litre)	150	N/A	0%	1%	▶	▶	▶	
	Cooking Gas (Bottle)	3300	N/A	71%	10%	▶	▶	▶	
Hajja	Wheat flour (kg)	170	-13%	24%	6%	▶	▶	▶	
	Sugar (kg)	238	-2%	11%	-16%	▶	▶	▶	
	Veg. Oil (litre)	361	-13%	6%	-19%	▶	▶	▶	
	Red beans (kg)	368	3%	17%	31%	▶	▶	▶	
	Onion (kg)	275	7%	27%	73%	▶	▶	▶	
	Petrol (Litre)	1000	60%	532%	557%	▶	▶	▶	
	Diesel (Litre)	975	65%	550%	558%	▶	▶	▶	
	Cooking Gas (Bottle)	4350	58%	126%	44%	▶	▶	▶	
Hodfieda	Wheat flour (kg)	185	-4%	35%	16%	▶	▶	▶	
	Sugar (kg)	223	-7%	4%	-21%	▶	▶	▶	
	Veg. Oil (litre)	296	-22%	-13%	-33%	▶	▶	▶	
	Red beans (kg)	405	9%	29%	44%	▶	▶	▶	
	Onion (kg)	224	-4%	3%	41%	▶	▶	▶	
	Petrol (Litre)	800	30%	405%	425%	▶	▶	▶	
	Diesel (Litre)	750	33%	400%	406%	▶	▶	▶	
	Cooking Gas (Bottle)	5750	113%	199%	91%	▶	▶	▶	
Ibb	Wheat flour (kg)	225	N/A	65%	41%	▶	▶	▶	
	Sugar (kg)	270	N/A	26%	-5%	▶	▶	▶	
	Veg. Oil (litre)	308	N/A	-10%	-31%	▶	▶	▶	
	Red beans (kg)	375	N/A	20%	34%	▶	▶	▶	
	Onion (kg)	255	N/A	17%	61%	▶	▶	▶	
	Petrol (Litre)	N/A	N/A	N/A	N/A				
	Diesel (Litre)	N/A	N/A	N/A	N/A				
	Cooking Gas (Bottle)	5250	N/A	173%	74%	▶	▶	▶	
Laheg	Wheat flour (kg)	227	N/A	66%	42%	▶	▶	▶	
	Sugar (kg)	350	N/A	63%	24%	▶	▶	▶	
	Veg. Oil (litre)	N/A	N/A	N/A	N/A				
	Red beans (kg)	N/A	N/A	N/A	N/A				
	Onion (kg)	N/A	N/A	N/A	N/A				
	Petrol (Litre)	N/A	N/A	N/A	N/A				
	Diesel (Litre)	N/A	N/A	N/A	N/A				
	Cooking Gas (Bottle)	5000	N/A	160%	66%	▶	▶	▶	
Mareb	Wheat flour (kg)	164	N/A	20%	3%	▶	▶	▶	
	Sugar (kg)	285	N/A	33%	1%	▶	▶	▶	
	Veg. Oil (litre)	325	N/A	-5%	-27%	▶	▶	▶	
	Red beans (kg)	N/A	N/A	N/A	N/A				
	Onion (kg)	N/A	N/A	N/A	N/A				
	Petrol (Litre)	750	N/A	374%	392%	▶	▶	▶	
	Diesel (Litre)	650	N/A	333%	338%	▶	▶	▶	
	Cooking Gas (Bottle)	4200	N/A	118%	39%	▶	▶	▶	
Sa'ada	Wheat flour (kg)	225	7%	65%	41%	▶	▶	▶	
	Sugar (kg)	313	-9%	46%	10%	▶	▶	▶	
	Veg. Oil (litre)	405	7%	19%	-9%	▶	▶	▶	
	Red beans (kg)	400	3%	28%	43%	▶	▶	▶	
	Onion (kg)	308	7%	42%	94%	▶	▶	▶	
	Petrol (Litre)	950	23%	500%	524%	▶	▶	▶	
	Diesel (Litre)	850	29%	467%	473%	▶	▶	▶	
	Cooking Gas (Bottle)	3800	7%	97%	26%	▶	▶	▶	
Sana'a	Wheat flour (kg)	177	-14%	29%	10%	▶	▶	▶	
	Sugar (kg)	253	10%	18%	-11%	▶	▶	▶	
	Veg. Oil (litre)	346	-11%	1%	-22%	▶	▶	▶	
	Red beans (kg)	368	0%	17%	31%	▶	▶	▶	
	Onion (kg)	250	-9%	15%	58%	▶	▶	▶	
	Petrol (Litre)	950	58%	500%	524%	▶	▶	▶	
	Diesel (Litre)	800	42%	433%	439%	▶	▶	▶	
	Cooking Gas (Bottle)	4450	44%	131%	48%	▶	▶	▶	
Sana'a city	Wheat flour (kg)	225	N/A	65%	41%	▶	▶	▶	
	Sugar (kg)	275	N/A	28%	-3%	▶	▶	▶	
	Veg. Oil (litre)	291	N/A	-15%	-34%	▶	▶	▶	
	Red beans (kg)	340	N/A	9%	21%	▶	▶	▶	
	Onion (kg)	240	N/A	11%	51%	▶	▶	▶	
	Petrol (Litre)	N/A	N/A	N/A	N/A				
	Diesel (Litre)	N/A	N/A	N/A	N/A				
	Cooking Gas (Bottle)	5000	N/A	160%	66%	▶	▶	▶	
Shabwa	Wheat flour (kg)	176	N/A	29%	10%	▶	▶	▶	
	Sugar (kg)	210	N/A	-2%	-26%	▶	▶	▶	
	Veg. Oil (litre)	330	N/A	-3%	-26%	▶	▶	▶	
	Red beans (kg)	N/A	N/A	N/A	N/A				
	Onion (kg)	300	N/A	38%	89%	▶	▶	▶	
	Petrol (Litre)	800	N/A	405%	425%	▶	▶	▶	
	Diesel (Litre)	750	N/A	400%	406%	▶	▶	▶	
	Cooking Gas (Bottle)	5000	N/A	160%	66%	▶	▶	▶	
Soqatra	Wheat flour (kg)	250	N/A	83%	56%	▶	▶	▶	
	Sugar (kg)	300	N/A	40%	6%	▶	▶	▶	
	Veg. Oil (litre)	325	N/A	-5%	-27%	▶	▶	▶	
	Red beans (kg)	N/A	N/A	N/A	N/A				
	Onion (kg)	N/A	N/A	N/A	N/A				
	Petrol (Litre)	150	N/A	-5%	-2%	▶	▶	▶	
	Diesel (Litre)	150	N/A	0%	1%	▶	▶	▶	
	Cooking Gas (Bottle)	N/A	N/A	N/A	N/A				
Taiz	Wheat flour (kg)	225	N/A	65%	41%	▶	▶	▶	
	Sugar (kg)	270	N/A	26%	-5%	▶	▶	▶	
	Veg. Oil (litre)	325	N/A	-5%	-27%	▶	▶	▶	
	Red beans (kg)	375	N/A	20%	34%	▶	▶	▶	
	Onion (kg)	N/A	N/A	N/A	N/A				
	Petrol (Litre)	N/A	N/A	N/A	N/A				
	Diesel (Litre)	N/A	N/A	N/A	N/A				
	Cooking Gas (Bottle)	5500	N/A	186%	83%	▶	▶	▶	

Yemen Market Price Update

Week 2: May 2015

Commodity	Market Area	% Change from Stated Period				Degree of Change			Commodity	% Change from Stated Period				Degree of Change			Commodity	% Change from Stated Period				Degree of Change																										
		Current Month Ave. to date	1 M			Within Month Trend	1 M	Pre-Crisis		2011 (Yr Ave)	Current Month Ave. to date	1 M			Within Month Trend	1 M		Pre-Crisis	2011 (Yr Ave)	Current Month Ave. to date	1 M			Within Month Trend	1 M	Pre-Crisis	2011 (Yr Ave)																					
			Pre-Crisis	2011 (Yr Ave)	2011 (Yr Ave)							Pre-Crisis	2011 (Yr Ave)	Pre-Crisis							2011 (Yr Ave)	Pre-Crisis	2011 (Yr Ave)					Pre-Crisis	2011 (Yr Ave)	Pre-Crisis	2011 (Yr Ave)																	
Wheat flour (kg)	Abyan	220	N/A	61%	38%	▶		▲	▲	Veg. Oil (litre)	N/A	N/A	N/A	N/A						Onion (Litre)	N/A	N/A	N/A	N/A						Petrol (Litre)	N/A	N/A	N/A	N/A														
	Addaleh	240	N/A	75%	50%	▶		▲	▲		N/A	N/A	N/A	N/A								N/A	N/A	N/A	N/A																							
	Aden	250	9%	83%	56%	▶	▲	▲	▲		410	4%	20%	-8%		▶	▶	▶	▶			290	10%	34%	83%		▶	▶	▶		▶	▶	▶	▶	▶	▶	▶	▶										
	Al Baidha	128	N/A	-6%	-20%	▶		▶	▶		323	N/A	-5%	-27%		▶	▶	▶	▶			225	N/A	4%	42%		▶	▶	▶		▶	▶	▶	▶	▶	▶	▶	▶										
	Al Mahra	160	N/A	17%	0%	▶		▶	▶		308	N/A	-10%	-31%		▶	▶	▶	▶			190	N/A	-12%	20%		▶	▶	▶		▶	▶	▶	▶	▶	▶	▶	▶	▶	▶								
	Al Mahweet	130	N/A	-5%	-19%	▶		▶	▶		288	N/A	-16%	-35%		▶	▶	▶	▶			235	N/A	8%	48%		▶	▶	▶		▶	▶	▶	▶	▶	▶	▶	▶	▶	▶	▶							
	Amran	164	-15%	20%	2%	▶	▶	▶	▶		344	-5%	1%	-23%		▶	▶	▶	▶			240	-4%	11%	51%		▶	▶	▶		▶	▶	▶	▶	▶	▶	▶	▶	▶	▶	▶	▶						
	Dhamar	130	N/A	-5%	-19%	▶		▶	▶		283	N/A	-17%	-36%		▶	▶	▶	▶			225	N/A	4%	42%		▶	▶	▶		▶	▶	▶	▶	▶	▶	▶	▶	▶	▶	▶	▶						
	Hajja	170	-13%	24%	6%	▶	▶	▶	▶		361	-13%	6%	-19%		▶	▶	▶	▶			275	7%	27%	73%		▶	▶	▶		▶	▶	▶	▶	▶	▶	▶	▶	▶	▶	▶	▶	▶	▶				
	Hodieda	185	-4%	35%	16%	▶	▶	▶	▶		296	-22%	-13%	-33%		▶	▶	▶	▶			224	-4%	3%	41%		▶	▶	▶		▶	▶	▶	▶	▶	▶	▶	▶	▶	▶	▶	▶	▶	▶				
	Ibb	225	N/A	65%	41%	▶		▶	▶		308	N/A	-10%	-31%		▶	▶	▶	▶			255	N/A	17%	61%		▶	▶	▶		▶	▶	▶	▶	▶	▶	▶	▶	▶	▶	▶	▶	▶	▶				
	Laheg	227	N/A	66%	42%	▶		▶	▶		N/A	N/A	N/A	N/A								N/A	N/A	N/A	N/A																							
	Mareb	164	N/A	20%	3%	▶		▶	▶		325	N/A	-5%	-27%		▶	▶	▶	▶			750	N/A	245%	373%		▶	▶	▶		▶	▶	▶	▶	▶	▶	▶	▶	▶	▶	▶	▶	▶	▶				
	Sa'ada	225	7%	65%	41%	▶	▶	▶	▶		405	7%	19%	-9%		▶	▶	▶	▶			308	7%	42%	94%		▶	▶	▶		▶	▶	▶	▶	▶	▶	▶	▶	▶	▶	▶	▶	▶	▶	▶			
	Sana'a	177	-14%	29%	10%	▶	▶	▶	▶		346	-11%	1%	-22%		▶	▶	▶	▶			250	-9%	15%	58%		▶	▶	▶		▶	▶	▶	▶	▶	▶	▶	▶	▶	▶	▶	▶	▶	▶	▶			
	Sana'a city	225	N/A	65%	41%	▶		▶	▶		291	N/A	-15%	-34%		▶	▶	▶	▶			240	N/A	11%	51%		▶	▶	▶		▶	▶	▶	▶	▶	▶	▶	▶	▶	▶	▶	▶	▶	▶	▶	▶		
Hadramout	180	N/A	32%	13%	▶		▶	▶	281	N/A	-18%	-37%		▶	▶	▶	▶		210	N/A	-3%	32%		▶	▶	▶	▶	▶	▶	▶	▶	▶	▶	▶	▶	▶	▶	▶	▶	▶	▶							
Shabwa	176	N/A	29%	10%	▶		▶	▶	330	N/A	-3%	-26%		▶	▶	▶	▶		300	N/A	38%	89%		▶	▶	▶	▶	▶	▶	▶	▶	▶	▶	▶	▶	▶	▶	▶	▶	▶	▶	▶						
Soqatra	250	N/A	83%	56%	▶		▶	▶	325	N/A	-5%	-27%		▶	▶	▶	▶		150	N/A	-31%	-5%		▶	▶	▶	▶	▶	▶	▶	▶	▶	▶	▶	▶	▶	▶	▶	▶	▶	▶	▶						
Taiz	225	N/A	65%	41%	▶		▶	▶	325	N/A	-5%	-27%		▶	▶	▶	▶		N/A	N/A	N/A	N/A																										
Sugar (kg)	Abyan	N/A	N/A	N/A	N/A				Red beans (kg)	N/A	N/A	N/A	N/A						Cooking Gas (Bottle)	N/A	N/A	N/A	N/A						Diesel (Litre)	N/A	N/A	N/A	N/A															
	Addaleh	375	N/A	75%	33%	▶		▲		▲	N/A	N/A	N/A	N/A							6500	N/A	238%	116%		▶	▶	▶		▶	▶	▶	▶	▶	▶	▶	▶	▶	▶	▶	▶	▶						
	Aden	280	11%	31%	-1%	▶	▶	▶		▶	400	5%	28%	43%		▶	▶	▶		▶		4000	27%	108%	33%		▶	▶		▶	▶	▶	▶	▶	▶	▶	▶	▶	▶	▶	▶	▶	▶	▶	▶	▶		
	Al Baidha	N/A	N/A	N/A	N/A					N/A	N/A	N/A	N/A									N/A	N/A	N/A	N/A																							
	Al Mahra	200	N/A	-7%	-29%	▶		▶		▶	N/A	N/A	N/A	N/A								4500	N/A	134%	49%		▶	▶		▶	▶	▶	▶	▶	▶	▶	▶	▶	▶	▶	▶	▶	▶	▶	▶			
	Al Mahweet	219	N/A	2%	-23%	▶		▶		▶	270	N/A	-14%	-4%		▶	▶	▶		▶		3750	N/A	95%	24%		▶	▶		▶	▶	▶	▶	▶	▶	▶	▶	▶	▶	▶	▶	▶	▶	▶	▶	▶		
	Amran	228	2%	6%	-20%	▶	▶	▶		▶	273	-15%	-13%	-3%		▶	▶	▶		▶		4525	56%	135%	50%		▶	▶		▶	▶	▶	▶	▶	▶	▶	▶	▶	▶	▶	▶	▶	▶	▶	▶	▶		
	Dhamar	260	N/A	21%	-8%	▶		▶		▶	350	N/A	12%	25%		▶	▶	▶		▶		3750	N/A	95%	24%		▶	▶		▶	▶	▶	▶	▶	▶	▶	▶	▶	▶	▶	▶	▶	▶	▶	▶	▶		
	Hajja	238	-2%	11%	-16%	▶	▶	▶		▶	368	3%	17%	31%		▶	▶	▶		▶		4350	58%	126%	44%		▶	▶		▶	▶	▶	▶	▶	▶	▶	▶	▶	▶	▶	▶	▶	▶	▶	▶	▶		
	Hodieda	223	-7%	4%	-21%	▶	▶	▶		▶	405	9%	29%	44%		▶	▶	▶		▶		5750	113%	199%	91%		▶	▶		▶	▶	▶	▶	▶	▶	▶	▶	▶	▶	▶	▶	▶	▶	▶	▶	▶	▶	
	Ibb	270	N/A	26%	-5%	▶		▶		▶	375	N/A	20%	34%		▶	▶	▶		▶		5250	N/A	173%	74%		▶	▶		▶	▶	▶	▶	▶	▶	▶	▶	▶	▶	▶	▶	▶	▶	▶	▶	▶	▶	
	Laheg	350	N/A	63%	24%	▶		▶		▶	N/A	N/A	N/A	N/A								5000	N/A	160%	66%		▶	▶		▶	▶	▶	▶	▶	▶	▶	▶	▶	▶	▶	▶	▶	▶	▶	▶			
	Mareb	285	N/A	33%	1%	▶		▶		▶	N/A	N/A	N/A	N/A								4200	N/A	118%	39%		▶	▶		▶	▶	▶	▶	▶	▶	▶	▶	▶	▶	▶	▶	▶	▶	▶	▶			
	Sa'ada	313	-9%	46%	10%	▶	▶	▶		▶	400	3%	28%	43%		▶	▶	▶		▶		3800	7%	97%	26%		▶	▶		▶	▶	▶	▶	▶	▶	▶	▶	▶	▶	▶	▶	▶	▶	▶	▶	▶	▶	
	Sana'a	253	10%	18%	-11%	▶	▶	▶		▶	368	0%	17%	31%		▶	▶	▶		▶		4450	44%	131%	48%		▶	▶		▶	▶	▶	▶	▶	▶	▶	▶	▶	▶	▶	▶	▶	▶	▶	▶	▶	▶	▶
	Sana'a city	275	N/A	28%	-3%	▶		▶		▶	340	N/A	9%	21%		▶	▶	▶		▶		5000	N/A	160%	66%		▶	▶		▶	▶	▶	▶	▶	▶	▶	▶	▶	▶	▶	▶	▶	▶	▶	▶	▶	▶	
Hadramout	225	N/A	5%	-20%	▶		▶	▶	340	N/A	9%	21%		▶	▶	▶	▶		3300	N/A	71%	10%		▶	▶	▶	▶	▶	▶	▶	▶	▶	▶	▶	▶	▶	▶	▶	▶	▶	▶	▶						
Shabwa	210	N/A	-2%	-26%	▶		▶	▶	N/A	N/A	N/A	N/A							5000	N/A	160%	66%		▶	▶	▶	▶	▶	▶	▶	▶	▶	▶	▶	▶	▶	▶	▶	▶	▶	▶	▶						
Soqatra	300	N/A	40%	6%	▶		▶	▶	N/A	N/A	N/A	N/A							N/A	N/A	N/A	N/A																										
Taiz	270	N/A	26%	-5%	▶		▶	▶	375	N/A	20%	34%		▶	▶	▶	▶		5500	N/A	186%	83%		▶	▶	▶	▶	▶																				