



Yemen Weekly Market Situation Update

Week 1: June 2015

SUMMARY

- Continuous deterioration of Yemeni socioeconomic context is weakening performance of food and fuel markets. Food prices have continued their upward trends. Food availability has reportedly been low in several markets.
- In normal years, households' food demand increases in the month of Ramadan, which will start next week. Usually, Ramadan deepens price increases.
- As of 2nd June, diesel imports are estimated at 77,260 metric tonnes. An additional 96,914 metric tonnes of petroleum and 42,257 metric tonnes of gas oil have been imported by three major importers. This week, fuel price has increased by 23% as compared to previous month.

Summary of retail prices of key commodities (in YER)

Availability/Supply

	Wheat Flour	Sugar	Veg Oil	Beans	Onion	Cooking gas	Petrol	Diesel
Abyan	NA	SAV	SAV	NA	SAV	SAV	NA	NA
Addaleh	SAV	SAV	SAV	SAV	SAV	NA	NA	NA
Aden	NA	SAV	SAV	NA	NA	NA	NA	NA
Al Baidha	SAV	SAV	SAV	SAV	AV	AV	SAV	SAV
Al Jawf	SAV	AV	SAV	SAV	SAV	SAV	SAV	SAV
Al Mahra	AV	AV	AV	AV	AV	SAV	SAV	SAV
Al Mahweet	AV	AV	AV	AV	AV	SAV	SAV	SAV
Amran	AV	AV	AV	AV	AV	SAV	SAV	SAV
Dhamar	AV	AV	AV	AV	AV	AV	SAV	SAV
Hadramout	AV	SAV	AV	SAV	AV	SAV	SAV	SAV
Hajja	SAV	AV	AV	AV	AV	SAV	SAV	SAV
Hodieda	SAV	AV	AV	SAV	AV	SAV	AV	SAV
Ibb	AV	SAV	SAV	SAV	AV	SAV	SAV	SAV
Laheg	NA	SAV	SAV	NA	SAV	SAV	NA	NA
Mareb	SAV	SAV	SAV	AV	AV	SAV	SAV	SAV
Rayma	SAV	AV	AV	AV	AV	SAV	SAV	SAV
Sa'ada	SAV	SAV	SAV	AV	SAV	SAV	NA	SAV
Sana'a	SAV	SAV	SAV	AV	AV	AV	SAV	SAV
Sana'a city	AV	AV	SAV	AV	AV	SAV	SAV	SAV
Shabwa	SAV	SAV	SAV	SAV	SAV	NA	SAV	NA
Soqatra	AV	AV	AV	SAV	NA	SAV	AV	AV
Taiz	SAV	AV	SAV	SAV	AV	SAV	NA	NA

AV Generally Available
 SAV Sporadically Available
 NA Not Available

Wheat Flour

Current Ave. Price: **184**
 Min **140** Max **265**
 Ave. % Change: **1%**

Observed prices slightly increased as compared to last week. Highest price in Addaleh, it is 94% up than the pre-crisis period. Lowest price recorded in Al Mahra. In Sana'a city, prices remain unchanged for the week.

Onion

Current Ave. Price: **254**
 Min **170** Max **400**
 Ave. % Change: **6%**

Average price increased from 240 YER last week to 254 YER this week. Highest price recorded in Addaleh, Mareb and Abyan. Lowest price observed in Dhamar.

Red Beans

Current Ave. Price: **392**
 Min **200** Max **500**
 Ave. % Change: **7%**

Prices are 7% more than in last week. Highest prices recorded in Addaleh and Taiz. Lowest price observed in Shabwa. Prices remain unchanged in Al Mahra.

Vegetable Oil

Current Ave. Price: **383**
 Min **290** Max **480**
 Ave. % Change: **9%**

Slight increase of vegetable oil price observed. Highest price recorded in Abyan, it remains unchanged since last week. Lowest price observed in Al Mahra; it has decreased by 15% as compared to pre-crisis period.

Sugar

Current Ave. Price: **265**
 Min **150** Max **530**
 Ave. % Change: **6%**

Slight increase price observed. Highest price recorded in Addaleh; 173% up than in pre-crisis period. Lowest price observed in Al Mahra like last week.

Cooking Gas

Current Ave. Price: **5040**
 Min **3150** Max **8200**
 Ave. % Change: **10%**

Overall price increase observed. Highest price recorded in Abyan and Leheg. Lowest price observed in Hadramout.

Petrol:

Current Ave. Price: **806**
 Min **300** Max **2000**
 Ave. % Change: **18%**

Reducing import capacity lowers petrol availability. Prices are 18% more than in last week. Highest price observed in Rayma. Lowest price recorded in Hajja.

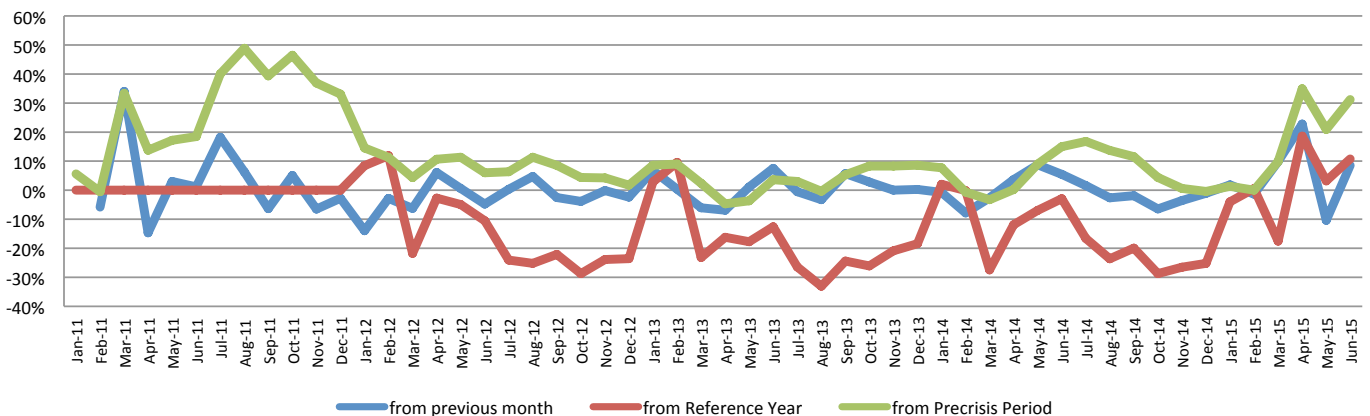
Diesel:

Current Ave. Price: **967**
 Min **250** Max **2200**
 Ave. % Change: **23%**

Overall increased price observed. Prices rose by 23% as compared to previous month. Highest price observed in Rayma. Lowest price recorded in Soqatra.

The current average price is the running average for the month. The price changes indicated are changes from the previous month (prices from all markets available). The table on next page presents more details. The partial food basket (per person/month) consists of Wheat Flour (7.24kg), Rice (1.06kg), Oil (1.065l), Red Beans (0.36kg), Sugar (1.98kg)

% Partial of Food Basket Costs between periods





Yemen Weekly Market Update

Week 1: June 2015

Market Area	Commodity	Change of Month to Date Ave					Direction of Change			
		Current Month Ave. to date	1 M	Pre-Crisis	2011 (Yr Seasonal Ave)	2011 (Yr Ave)	Within Month Trend	1 M	Pre-Crisis	2011 (Yr Ave)
Abyan	Wheat flour (kg)	N/A	N/A	N/A	N/A	N/A				
	Sugar (kg)	246	3%	15%	-13%	-13%				
	Veg. Oil (litre)	480	0%	41%	8%	8%				
	Red beans (kg)	N/A	N/A	N/A	N/A	N/A				
	Onion (kg)	350	6%	61%	121%	121%				
	Petrol (Litre)	N/A	N/A	N/A	N/A	N/A				
	Diesel (Litre)	N/A	N/A	N/A	N/A	N/A				
	Cooking Gas (Bottle)	8200	4%	326%	172%	172%				
Aden	Wheat flour (kg)	N/A	N/A	N/A	N/A	N/A				
	Sugar (kg)	265	7%	94%	66%	66%				
	Veg. Oil (litre)	530	27%	147%	87%	87%				
	Red beans (kg)	460	2%	35%	4%	4%				
	Onion (kg)	500	0%	60%	78%	78%				
	Petrol (Litre)	400	0%	84%	152%	152%				
	Diesel (Litre)	N/A	N/A	N/A	N/A	N/A				
	Cooking Gas (Bottle)	N/A	N/A	N/A	N/A	N/A				
Al Baidha	Wheat flour (kg)	170	11%	24%	6%	6%				
	Sugar (kg)	350	0%	63%	24%	24%				
	Veg. Oil (litre)	380	18%	11%	-14%	-14%				
	Red beans (kg)	490	18%	56%	75%	75%				
	Onion (kg)	230	10%	6%	45%	45%				
	Petrol (Litre)	750	0%	374%	392%	392%				
	Diesel (Litre)	1500	20%	900%	912%	912%				
	Cooking Gas (Bottle)	4000	7%	108%	33%	33%				
Al Jawf	Wheat flour (kg)	171	10%	25%	7%	7%				
	Sugar (kg)	320	28%	49%	13%	13%				
	Veg. Oil (litre)	360	-1%	6%	-19%	-19%				
	Red beans (kg)	400	0%	28%	43%	43%				
	Onion (kg)	200	14%	-8%	26%	26%				
	Petrol (Litre)	550	144%	247%	261%	261%				
	Diesel (Litre)	500	100%	233%	237%	237%				
	Cooking Gas (Bottle)	4000	19%	108%	33%	33%				
Al Mahra	Wheat flour (kg)	140	-7%	2%	-12%	-12%				
	Sugar (kg)	150	-11%	-30%	-47%	-47%				
	Veg. Oil (litre)	290	-4%	-15%	-35%	-35%				
	Red beans (kg)	350	0%	12%	25%	25%				
	Onion (kg)	310	27%	43%	96%	96%				
	Petrol (Litre)	500	28%	216%	228%	228%				
	Diesel (Litre)	520	22%	247%	251%	251%				
	Cooking Gas (Bottle)	6000	16%	212%	99%	99%				
Al Mahweet	Wheat flour (kg)	180	17%	32%	13%	13%				
	Sugar (kg)	160	-26%	-25%	-43%	-43%				
	Veg. Oil (litre)	400	22%	17%	-10%	-10%				
	Red beans (kg)	400	24%	28%	43%	43%				
	Onion (kg)	180	-8%	-17%	14%	14%				
	Petrol (Litre)	650	-11%	311%	327%	327%				
	Diesel (Litre)	800	0%	433%	439%	439%				
	Cooking Gas (Bottle)	4500	15%	134%	49%	49%				
Dhamar	Wheat flour (kg)	162	10%	18%	1%	1%				
	Sugar (kg)	152	-19%	-29%	-46%	-46%				
	Veg. Oil (litre)	375	9%	10%	-15%	-15%				
	Red beans (kg)	420	15%	34%	50%	50%				
	Onion (kg)	170	7%	-22%	7%	7%				
	Petrol (Litre)	1000	0%	532%	557%	557%				
	Diesel (Litre)	1250	0%	733%	743%	743%				
	Cooking Gas (Bottle)	4000	7%	108%	33%	33%				
Hadramout	Wheat flour (kg)	155	-4%	13%	-3%	-3%				
	Sugar (kg)	168	-9%	-22%	-41%	-41%				
	Veg. Oil (litre)	318	5%	-7%	-28%	-28%				
	Red beans (kg)	380	10%	21%	35%	35%				
	Onion (kg)	250	18%	15%	58%	58%				
	Petrol (Litre)	450	37%	184%	195%	195%				
	Diesel (Litre)	488	30%	225%	229%	229%				
	Cooking Gas (Bottle)	3150	7%	64%	5%	5%				
Hajja	Wheat flour (kg)	182	1%	33%	14%	14%				
	Sugar (kg)	280	22%	31%	-1%	-1%				
	Veg. Oil (litre)	400	4%	17%	-10%	-10%				
	Red beans (kg)	355	-1%	13%	27%	27%				
	Onion (kg)	220	-7%	1%	39%	39%				
	Petrol (Litre)	300	-56%	89%	97%	97%				
	Diesel (Litre)	1250	6%	733%	743%	743%				
	Cooking Gas (Bottle)	5000	10%	160%	66%	66%				
Ibb	Wheat flour (kg)	170	-10%	24%	6%	6%				
	Sugar (kg)	165	-16%	-23%	-42%	-42%				
	Veg. Oil (litre)	400	9%	17%	-10%	-10%				
	Red beans (kg)	400	2%	28%	43%	43%				
	Onion (kg)	180	-3%	-17%	14%	14%				
	Petrol (Litre)	1000	25%	532%	557%	557%				
	Diesel (Litre)	1200	23%	700%	709%	709%				
	Cooking Gas (Bottle)	5200	8%	170%	73%	73%				
Laheg	Wheat flour (kg)	N/A	N/A	N/A	N/A	N/A				
	Sugar (kg)	240	-9%	12%	-15%	-15%				
	Veg. Oil (litre)	460	1%	35%	4%	4%				
	Red beans (kg)	N/A	N/A	N/A	N/A	N/A				
	Onion (kg)	310	3%	43%	96%	96%				
	Petrol (Litre)	N/A	N/A	N/A	N/A	N/A				
	Diesel (Litre)	N/A	N/A	N/A	N/A	N/A				
	Cooking Gas (Bottle)	8000	26%	316%	166%	166%				
Mareb	Wheat flour (kg)	172	2%	26%	8%	8%				
	Sugar (kg)	350	19%	63%	24%	24%				
	Veg. Oil (litre)	425	19%	25%	-4%	-4%				
	Red beans (kg)	400	14%	28%	43%	43%				
	Onion (kg)	360	0%	66%	127%	127%				
	Petrol (Litre)	750	2%	374%	392%	392%				
	Diesel (Litre)	750	5%	400%	406%	406%				
	Cooking Gas (Bottle)	5000	19%	160%	66%	66%				
Sana'a city	Wheat flour (kg)	184	-2%	35%	15%	15%				
	Sugar (kg)	340	32%	59%	20%	20%				
	Veg. Oil (litre)	310	7%	-9%	-30%	-30%				
	Red beans (kg)	360	7%	15%	28%	28%				
	Onion (kg)	250	9%	15%	58%	58%				
	Petrol (Litre)	500	100%	216%	228%	228%				
	Diesel (Litre)	600	85%	300%	305%	305%				
	Cooking Gas (Bottle)	4200	10%	118%	39%	39%				
Sana'a	Wheat flour (kg)	186	7%	36%	16%	16%				
	Sugar (kg)	350	33%	63%	24%	24%				
	Veg. Oil (litre)	325	1%	-5%	-27%	-27%				
	Red beans (kg)	370	7%	18%	32%	32%				
	Onion (kg)	200	-11%	-8%	26%	26%				
	Petrol (Litre)	500	3%	216%	228%	228%				
	Diesel (Litre)	550	14%	267%	271%	271%				
	Cooking Gas (Bottle)	4200	6%	118%	39%	39%				
Shabwa	Wheat flour (kg)	176	4%	-29%	10%	10%				
	Sugar (kg)	158	-29%	-26%	-44%	-44%				
	Veg. Oil (litre)	400	15%	17%	-10%	-10%				
	Red beans (kg)	200	18%	-36%	-29%	-29%				
	Onion (kg)	260	-3%	20%	64%	64%				
	Petrol (Litre)	1000	7%	532%	557%	557%				
	Diesel (Litre)	N/A	N/A	N/A	N/A	N/A				
	Cooking Gas (Bottle)	N/A	N/A	N/A	N/A	N/A				
Soqatra	Wheat flour (kg)	144	-18%	5%	-10%	-10%				
	Sugar (kg)	160	-23%	-25%	-43%	-43%				
	Veg. Oil (litre)	310	3%	-9%	-30%	-30%				
	Red beans (kg)	400	0%	28%	43%	43%				
	Onion (kg)	N/A	N/A	N/A	N/A	N/A				
	Petrol (Litre)	300	100%	89%	97%	97%				
	Diesel (Litre)	250	67%	67%	69%	69%				
	Cooking Gas (Bottle)	4000	0%	108%	33%	33%				

Price decrease below normal price fluctuation
 Normal Price Fluctuation
 Price increase above normal price fluctuation

All Prices in YER

(+/- 5%) Change from Previous Month
 (+/- 10%) Change from Previous Month (1M) and Pre-Crisis Period
 (+/- 15%) Change from Reference Year (2011)



Yemen Weekly Market Update

Week 1: June 2015

Commodity	Market Area	Current Month Ave. to date	% Change from Stated Period			Degree of Change			Commodity	Current Month Ave. to date	% Change from Stated Period			Degree of Change			Commodity	Current Month Ave. to date	% Change from Stated Period			Degree of Change											
			1 M	Pre-Crisis	2011 (Yr Ave)	Within Month Trend	1 M	Pre-Crisis			2011 (Yr Ave)	1 M	Pre-Crisis	2011 (Yr Ave)	1 M	Pre-Crisis			2011 (Yr Ave)	1 M	Pre-Crisis	2011 (Yr Ave)											
Wheat flour (kg)	Abyan	N/A	N/A	N/A	N/A				Veg. Oil (litre)	480	0,00	41%	8%				Onion (kg)	350	0,06	61%	121%				Petrol (Litre)	N/A	N/A	N/A	N/A				
	Addaleh	265	0,07	94%	66%					460	0,02	35%	4%					400	0,00	84%	152%					N/A	N/A	N/A	N/A				
	Aden	N/A	N/A	N/A	N/A					450	0,18	32%	2%					N/A	N/A	N/A	N/A					N/A	N/A	N/A	N/A				
	Al Baidha	170	0,11	24%	6%					380	0,18	11%	-14%					230	0,10	6%	45%					750	0,00	374%	392%				
	Al Jawf	171	0,10	25%	7%					360	-0,01	6%	-19%					200	0,14	-8%	26%					550	1,44	247%	261%				
	Al Mahra	140	-0,07	2%	-12%					290	-0,04	-15%	-35%					310	0,27	43%	96%					500	0,28	216%	228%				
	Al Mahweet	180	0,17	32%	13%					400	0,22	17%	-10%					180	-0,08	-17%	14%					650	-0,11	311%	327%				
	Amran	175	0,08	28%	9%					367	0,07	7%	-17%					250	0,02	15%	58%					1500	0,22	847%	885%				
	Dhamar	162	0,10	18%	1%					375	0,09	10%	-15%					170	0,07	-22%	7%					1000	0,00	532%	557%				
	Hadramout	155	-0,04	13%	-3%					318	0,05	-7%	-28%					250	0,18	15%	58%					450	0,37	184%	195%				
	Hajja	182	0,01	33%	14%					400	0,04	17%	-10%					220	-0,07	1%	39%					300	-0,56	89%	97%				
	Hodieda	N/A	N/A	N/A	N/A					N/A	N/A	N/A	N/A					N/A	N/A	N/A	N/A					N/A	N/A	N/A	N/A				
	Ibb	170	-0,10	24%	6%					400	0,09	17%	-10%					180	-0,03	-17%	14%					1000	0,25	532%	557%				
	Laheg	N/A	N/A	N/A	N/A					460	0,01	35%	4%					310	0,03	43%	96%					N/A	N/A	N/A	N/A				
	Mareb	172	0,02	26%	8%					425	0,19	25%	-4%					360	0,00	66%	127%					750	0,02	374%	392%				
	Rayma	250	0,06	83%	56%					375	0,03	10%	-15%					200	0,00	-8%	26%					2000	0,60	1163%	1213%				
Sa'ada	223	0,03	63%	39%				450	0,08	32%	2%				270	-0,09	24%	70%				N/A	N/A	N/A	N/A								
Sana'a	186	0,07	36%	16%				325	0,01	-5%	-27%				200	-0,11	-8%	26%				500	0,03	216%	228%								
Sana'a city	184	-0,02	35%	15%				310	0,07	-9%	-30%				250	0,09	15%	58%				500	1,00	216%	228%								
Shabwa	176	0,04	29%	10%				400	0,15	17%	-10%				260	-0,03	20%	64%				1000	0,07	532%	557%								
Soqatra	144	-0,18	5%	-10%				310	0,03	-9%	-30%				N/A	N/A	N/A	N/A				300	1,00	89%	97%								
Taiz	194	-0,02	42%	21%				400	0,14	17%	-10%				300	0,20	38%	89%				N/A	N/A	N/A	N/A								
Sugar (kg)	Abyan	246	0,03	15%	-13%				Red beans (kg)	N/A	N/A	N/A	N/A				Cooking Gas (Bottle)	8200	0,04	326%	172%				Diesel (Litre)	N/A	N/A	N/A	N/A				
	Addaleh	530	0,27	147%	87%					500	0,00	60%	78%					N/A	N/A	N/A	N/A					N/A	N/A	N/A	N/A				
	Aden	N/A	N/A	N/A	N/A					N/A	N/A	N/A	N/A					N/A	N/A	N/A	N/A					N/A	N/A	N/A	N/A				
	Al Baidha	350	0,00	63%	24%					490	0,18	56%	75%					4000	0,07	108%	33%					1500	0,20	900%	912%				
	Al Jawf	320	0,28	49%	13%					400	0,00	28%	43%					4000	0,19	108%	33%					500	1,00	233%	237%				
	Al Mahra	150	-0,11	-30%	-47%					350	0,00	12%	25%					6000	0,16	212%	99%					520	0,22	247%	251%				
	Al Mahweet	160	-0,26	-25%	-43%					400	0,24	28%	43%					4500	0,15	134%	49%					800	0,00	433%	439%				
	Amran	300	0,26	40%	6%					320	0,12	2%	14%					4200	0,02	118%	39%					1500	0,20	900%	912%				
	Dhamar	152	-0,19	-29%	-46%					420	0,15	34%	50%					4000	0,07	108%	33%					1250	0,00	733%	743%				
	Hadramout	168	-0,09	-22%	-41%					380	0,10	21%	35%					3150	0,07	64%	5%					488	0,30	225%	229%				
	Hajja	280	0,22	31%	-1%					355	-0,01	13%	27%					5000	0,10	160%	66%					1250	0,06	733%	743%				
	Hodieda	N/A	N/A	N/A	N/A					N/A	N/A	N/A	N/A					N/A	N/A	N/A	N/A					N/A	N/A	N/A	N/A				
	Ibb	165	-0,16	-23%	-42%					400	0,02	28%	43%					5200	0,08	170%	73%					1200	0,23	700%	709%				
	Laheg	240	-0,09	12%	-15%					N/A	N/A	N/A	N/A					8000	0,26	316%	166%					N/A	N/A	N/A	N/A				
	Mareb	300	0,19	63%	24%					400	0,14	28%	43%					5000	0,19	160%	66%					750	0,05	400%	406%				
	Rayma	350	-0,02	40%	6%					330	0,06	5%	18%					6000	0,17	212%	99%					2200	0,19	1367%	1384%				
Sa'ada	350	0,06	63%	24%				430	0,04	37%	53%				7000	0,33	264%	132%				1100	0,13	633%	642%								
Sana'a	350	0,33	63%	24%				370	0,07	18%	32%				4200	0,06	118%	39%				550	0,14	267%	271%								
Sana'a city	340	0,32	59%	20%				360	0,07	15%	28%				4200	0,10	118%	39%				600	0,85	300%	305%								
Shabwa	158	-0,29	-26%	-44%				200	0,18	-36%	-29%				N/A	N/A	N/A	N/A				N/A	N/A	N/A	N/A								
Soqatra	160	-0,23	-25%	-43%				400	0,00	28%	43%				4000	0,00	108%	33%				250	0,67	67%	69%								
Taiz	350	0,36	63%	24%				500	0,09	60%	78%				6000	0,09	212%	99%				N/A	N/A	N/A	N/A								

▼ Price decrease below normal price fluctuation
 ▲ Normal Price Fluctuation
 ▲ Price increase above normal price fluctuation
 ■ Lowest Price
 ■ Highest Price
 ■ N/A Not Available
 All Prices in YER
 (+/- 5%) Change within month and from Previous Month
 (+/- 10%) Change from Previous Month (1M) and Pre-Crisis Period
 (+/- 15%) Change from Reference Year (2011)