

Yemen Weekly Market Situation Update

Week 2: June 2015

SUMMARY

- Overall food markets show price stabilization, albeit prices level is much more elevated than the pre-crisis period. Food availability is seemingly improving. Staples prices will remain high during the month of Ramadan, as a result of increasing demand of food.
- After weeks of increasing fuel prices, average prices for diesel and petrol are on the decline this week. The national average of diesel decreased by 10% to 867 YER/ litre this week. However, the national average of diesel price is 478% more than the pre-crisis period.
- Shortage of fuel and civil insecurity continue to limit the population's access to food in markets.

Summary of retail prices of key commodities (in YER)

Availability/Supply

	Wheat Flour	Sugar	Veg Oil	Beans	Onion	Cooking gas	Petrol	Diesel
Abyan	SAV	SAV	SAV	SAV	AV	SAV	NA	NA
Addaleh	AV	AV	SAV	SAV	SAV	NA	NA	NA
Aden	NA	AV	NA	AV	SAV	NA	NA	NA
Al Baidha	SAV	SAV	AV	AV	AV	SAV	SAV	NA
Al Jawf	SAV	SAV	SAV	AV	AV	SAV	SAV	SAV
Al Mahra	AV	AV	AV	AV	AV	AV	AV	AV
Al Mahweet	AV	AV	AV	AV	AV	SAV	SAV	SAV
Amran	SAV	AV	AV	AV	AV	SAV	AV	SAV
Dharmar	AV	AV	AV	AV	AV	AV	SAV	SAV
Hadramout	AV	SAV	SAV	AV	AV	AV	SAV	SAV
Hajja	SAV	AV	AV	AV	AV	AV	SAV	NA
Hodieda	SAV	AV	AV	SAV	AV	SAV	AV	SAV
Ibb	SAV	AV	AV	AV	AV	AV	SAV	NA
Laheg	SAV	SAV	NA	NA	NA	SAV	NA	NA
Mareb	SAV	AV	AV	AV	AV	AV	SAV	SAV
Rayma	SAV	SAV	AV	AV	AV	SAV	SAV	SAV
Sa'ada	AV	AV	SAV	NA	AV	SAV	SAV	SAV
Sana'a	AV	AV	AV	AV	AV	AV	SAV	SAV
Sana'a city	AV	AV	AV	AV	AV	SAV	SAV	SAV
Shabwa	SAV	AV	AV	AV	AV	SAV	SAV	SAV
Soqatra	AV	AV	AV	SAV	NA	SAV	AV	AV
Taiz	AV	AV	AV	AV	AV	SAV	SAV	SAV

AV Generally Available
SAV Sporadically Available
NA Not Available

Wheat Flour

Current Ave. Price: **189**
Min **140** Max **293**
Ave. % Change: **4%**
In general, wheat prices are 38% more than the pre-crisis period. Prices remain stable as compared to last week. Highest price observed in Addaleh. Lowest price recorded in Al Mahra.

Onion

Current Ave. Price: **264**
Min **135** Max **600**
Ave. % Change: **10%**
Overall, onion prices have increased by 21% as compared to the pre-crisis period. Highest price observed in Aden. Lowest price recorded in Dharmar.

Red Beans

Current Ave. Price: **394**
Min **280** Max **500**
Ave. % Change: **8%**
Overall, onion prices have increased by 21% as compared to the pre-crisis period. Highest price observed in Aden. Lowest price recorded in Dharmar.

Vegetable Oil

Current Ave. Price: **379**
Min **295** Max **460**
Ave. % Change: **8%**
Overall, prices have decreased by 22% as compared to pre-crisis. Prices remain stable as compared to last week. Highest price recorded in Laheg. Lowest price observed in Al Mahra.

Sugar

Current Ave. Price: **265**
Min **155** Max **800**
Ave. % Change: **6%**
The national average is similar to last week. Prices are 24% more than pre-crisis period. Lowest price observed in Dharmar, Al Mahra. Highest price recorded in Aden.

Cooking Gas

Current Ave. Price: **4868**
Min **2825** Max **7000**
Ave. % Change: **6%**
Overall, prices are 153% more than the pre-crisis period, albeit the national average has slightly decreased this week. Highest price recorded in Laheg. Lowest price observed in Hadramout.

Petrol:

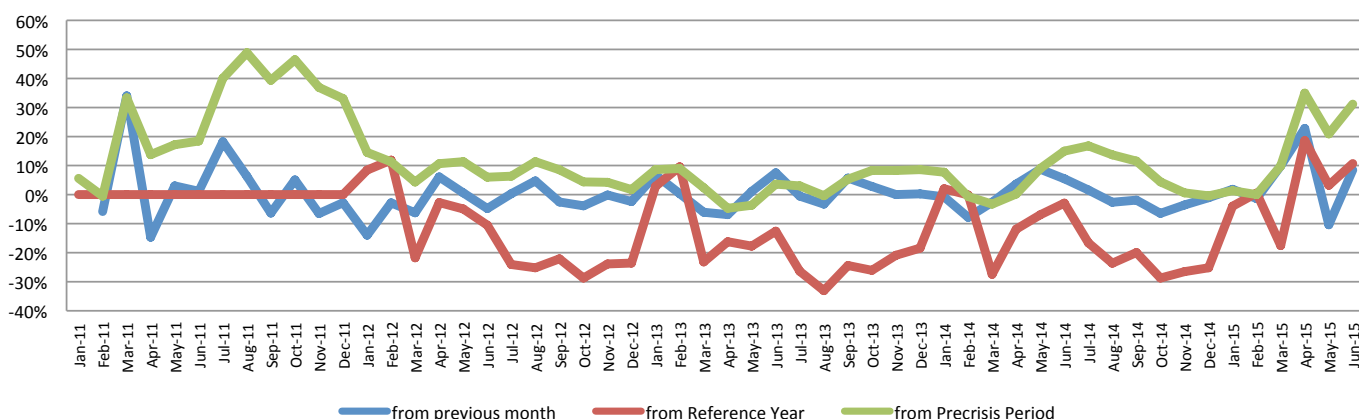
Current Ave. Price: **774**
Min **225** Max **2250**
Ave. % Change: **14%**
Overall, prices are 389% more than the pre-crisis period. The national average price has decreased this week. Highest price recorded in Amran is up to ten times higher than the lowest price observed in Soqatra.

Diesel:

Current Ave. Price: **867**
Min **200** Max **1850**
Ave. % Change: **10%**
In general, fuel prices are 478% more than the pre-crisis period. Highest price recorded in Rayma. Lowest price recorded in Soqatra.

The current average price is the running average for the month. The price changes indicated are changes from the previous month (prices from all markets available). The table on next page presents more details. The partial food basket (per person/month) consists of Wheat Flour (7.24kg), Rice (1.06kg), Oil (0.65l), Red Beans (0.36kg), Sugar (1.98kg)

% Partial of Food Basket Costs between periods





Yemen Weekly Market Update

Week 2: June 2015

Market Area	Commodity	Current Month Ave. to date	Change of Month to Date Ave				Direction of Change				
			1 M	Pre-Crisis	2011 (Yr Seasonal Ave)	2011 (Yr Ave)	Within Month Trend	1 M	Pre-Crisis	2011 (Yr Ave)	
Abyan	Wheat flour (kg)	240	4%	75%	50%	50%					
	Sugar (kg)	323	36%	51%	41%	14%					
	Veg. Oil (litre)	440	-8%	29%	-10%	-1%					
	Red beans (kg)	500	N/A	60%	78%	78%					
	Onion (kg)	325	-2%	50%	89%	105%					
	Petrol (Litre)	1000	-20%	532%	557%	557%					
	Diesel (Litre)	750	N/A	400%	406%	406%					
	Cooking Gas (Bottle)	6600	-16%	243%	66%	119%					
	Addaleh	Wheat flour (kg)	293	19%	114%	83%					
Sugar (kg)		515	23%	140%	82%						
Veg. Oil (litre)		445	-1%	30%	0%						
Red beans (kg)		500	0%	60%	78%						
Onion (kg)		350	-13%	61%	121%						
Petrol (Litre)		N/A	N/A	N/A	N/A						
Diesel (Litre)		N/A	N/A	N/A	N/A						
Cooking Gas (Bottle)		N/A	N/A	N/A	N/A						
Aden		Wheat flour (kg)	N/A	N/A	N/A	N/A					
	Sugar (kg)	800	150%	274%	183%						
	Veg. Oil (litre)	450	18%	32%	2%						
	Red beans (kg)	480	26%	53%	71%						
	Onion (kg)	600	122%	176%	278%						
	Petrol (Litre)	N/A	N/A	N/A	N/A						
	Diesel (Litre)	N/A	N/A	N/A	N/A						
	Cooking Gas (Bottle)	N/A	N/A	N/A	N/A						
	Al Baidha	Wheat flour (kg)	200	31%	46%	25%					
Sugar (kg)		425	21%	98%	50%						
Veg. Oil (litre)		405	26%	19%	-9%						
Red beans (kg)		495	19%	58%	76%						
Onion (kg)		240	15%	11%	51%						
Petrol (Litre)		750	0%	374%	392%						
Diesel (Litre)		1500	20%	900%	912%						
Cooking Gas (Bottle)		4500	20%	134%	49%						
Al Jawf		Wheat flour (kg)	164	5%	20%	2%					
	Sugar (kg)	310	24%	45%	10%						
	Veg. Oil (litre)	430	19%	26%	-3%						
	Red beans (kg)	400	0%	28%	43%						
	Onion (kg)	200	14%	-8%	26%						
	Petrol (Litre)	900	300%	468%	491%						
	Diesel (Litre)	800	220%	433%	439%						
	Cooking Gas (Bottle)	4500	34%	134%	49%						
	Al Mahra	Wheat flour (kg)	140	-7%	2%	-12%					
Sugar (kg)		155	-8%	-28%	-45%						
Veg. Oil (litre)		295	-2%	-14%	-33%						
Red beans (kg)		350	0%	12%	25%						
Onion (kg)		280	14%	29%	77%						
Petrol (Litre)		488	24%	208%	220%						
Diesel (Litre)		485	14%	223%	227%						
Cooking Gas (Bottle)		4000	-23%	108%	33%						
Al Mahweet		Wheat flour (kg)	190	24%	39%	19%					
	Sugar (kg)	180	-17%	-16%	-36%						
	Veg. Oil (litre)	355	8%	4%	-20%						
	Red beans (kg)	400	24%	28%	43%						
	Onion (kg)	240	23%	11%	51%						
	Petrol (Litre)	575	-22%	263%	278%						
	Diesel (Litre)	900	13%	500%	507%						
	Cooking Gas (Bottle)	4500	15%	134%	49%						
	Dhamar	Wheat flour (kg)	156	6%	14%	-2%					
Sugar (kg)		155	-17%	-28%	-45%						
Veg. Oil (litre)		375	9%	10%	-15%						
Red beans (kg)		385	5%	23%	37%						
Onion (kg)		135	-15%	-38%	-15%						
Petrol (Litre)		1000	0%	532%	557%						
Diesel (Litre)		1250	0%	733%	743%						
Cooking Gas (Bottle)		3750	0%	95%	24%						
Hadramout		Wheat flour (kg)	150	-7%	10%	-6%					
	Sugar (kg)	161	-13%	-25%	-43%						
	Veg. Oil (litre)	318	5%	-7%	-28%						
	Red beans (kg)	380	10%	21%	35%						
	Onion (kg)	250	18%	15%	58%						
	Petrol (Litre)	481	46%	204%	216%						
	Diesel (Litre)	494	32%	229%	233%						
	Cooking Gas (Bottle)	2825	-4%	47%	-6%						
	Hajja	Wheat flour (kg)	191	6%	40%	19%					
Sugar (kg)		240	5%	12%	-15%						
Veg. Oil (litre)		380	-1%	11%	-14%						
Red beans (kg)		328	-9%	5%	17%						
Onion (kg)		210	-12%	-3%	32%						
Petrol (Litre)		313	-54%	97%	105%						
Diesel (Litre)		1250	6%	733%	743%						
Cooking Gas (Bottle)		4750	4%	147%	58%						
Hobfeda		Wheat flour (kg)	N/A	N/A	N/A	N/A					
	Sugar (kg)	N/A	N/A	N/A	N/A						
	Veg. Oil (litre)	N/A	N/A	N/A	N/A						
	Red beans (kg)	N/A	N/A	N/A	N/A						
	Onion (kg)	N/A	N/A	N/A	N/A						
	Petrol (Litre)	N/A	N/A	N/A	N/A						
	Diesel (Litre)	N/A	N/A	N/A	N/A						
	Cooking Gas (Bottle)	N/A	N/A	N/A	N/A						
	Ibb	Wheat flour (kg)	185	-2%	35%	16%					
Sugar (kg)		162	-18%	-25%	-43%						
Veg. Oil (litre)		413	13%	21%	-7%						
Red beans (kg)		400	2%	28%	43%						
Onion (kg)		190	3%	-12%	20%						
Petrol (Litre)		750	-6%	374%	392%						
Diesel (Litre)		1200	23%	700%	709%						
Cooking Gas (Bottle)		6100	27%	217%	102%						
Laheg		Wheat flour (kg)	246	15%	80%	54%					
	Sugar (kg)	270	3%	26%	-5%						
	Veg. Oil (litre)	460	1%	35%	4%						
	Red beans (kg)	N/A	N/A	N/A	N/A						
	Onion (kg)	310	3%	43%	96%						
	Petrol (Litre)	N/A	N/A	N/A	N/A						
	Diesel (Litre)	N/A	N/A	N/A	N/A						
	Cooking Gas (Bottle)	7000	11%	264%	132%						
	Mareb	Wheat flour (kg)	181	8%	32%	13%					
Sugar (kg)		270	-8%	26%	-5%						
Veg. Oil (litre)		425	19%	25%	-4%						
Red beans (kg)		400	14%	28%	43%						
Onion (kg)		330	-8%	52%	108%						
Petrol (Litre)		750	2%	374%	392%						
Diesel (Litre)		750	5%	400%	406%						
Cooking Gas (Bottle)		5000	19%	160%	66%						
Sana'a city		Wheat flour (kg)	184	-2%	35%	15%					
	Sugar (kg)	285	10%	33%	1%						
	Veg. Oil (litre)	343	19%	0%	-23%						
	Red beans (kg)	380	13%	21%	35%						
	Onion (kg)	265	15%	22%	67%						
	Petrol (Litre)	325	30%	105%	113%						
	Diesel (Litre)	375	15%	150%	153%						
	Cooking Gas (Bottle)	4350	13%	126%	44%						
	Shabwa	Wheat flour (kg)	178	6%	30%	11%					
Sugar (kg)		167	-25%	-22%	-41%						
Veg. Oil (litre)		413	19%	21%	-7%						
Red beans (kg)		280	65%	-11%	0%						
Onion (kg)		280	5%	29%	77%						
Petrol (Litre)		800	-14%	405%	425%						
Diesel (Litre)		750	0%	400%	406%						
Cooking Gas (Bottle)		4500	-18%	134%	49%						
Soqatra		Wheat flour (kg)	144	-18%	5%	-10%					
	Sugar (kg)	160	-23%	-25%	-43%						
	Veg. Oil (litre)	305	2%	-11%	-31%						
	Red beans (kg)	400	0%	28%	43%						
	Onion (kg)	N/A	N/A	N/A	N/A						
	Petrol (Litre)	225	50%	42%	48%						
	Diesel (Litre)	200	33%	33%	35%						
	Cooking Gas (Bottle)	4000	0%	108%	33%						

▼ Price decrease below normal price fluctuation (+/- 5%) Change from Previous Month
 ► Normal Price Fluctuation (+/- 10%) Change from Previous Month (1M) and Pre-Crisis Period
 ▲ Price increase above normal price fluctuation (+/- 15%) Change from Reference Year (2011)

All Prices in YER



Yemen Weekly Market Update

Week 2: June 2015

Commodity	Market Area	Current Month Ave. to date	% Change from Stated Period		Degree of Change			Commodity	Current Month Ave. to date	% Change from Stated Period		Degree of Change			Commodity	Current Month Ave. to date	% Change from Stated Period		Degree of Change			Commodity	Current Month Ave. to date	% Change from Stated Period		Degree of Change						
			1 M	Pre-Crisis	2011 (Yr Ave)	Within Month Trend	1 M			Pre-Crisis	2011 (Yr Ave)	1 M	Pre-Crisis	2011 (Yr Ave)			Within Month Trend	1 M	Pre-Crisis	2011 (Yr Ave)	1 M			Pre-Crisis	2011 (Yr Ave)	Within Month Trend	1 M	Pre-Crisis	2011 (Yr Ave)	1 M	Pre-Crisis	2011 (Yr Ave)
Wheat flour (kg)	Abyan	240	0,04	75%	50%	▶	▶	▶	Veg. Oil (litre)	440	-0,08	29%	-1%	▶	▶	▶	Onion (kg)	325	-0,02	50%	105%	▶	▶	▶	Petrol (litre)	1000	-0,20	532%	557%	▶	▶	▶
	Addaleh	293	0,19	114%	83%	▶	▶	▶		445	-0,01	30%	0%	▶	▶	▶		350	-0,13	61%	121%	▶	▶	▶		N/A	N/A	N/A	N/A	▶	▶	▶
	Aden	N/A	N/A	N/A	N/A	▶	▶	▶		450	0,18	32%	2%	▶	▶	▶		600	1,22	176%	278%	▶	▶	▶		N/A	N/A	N/A	N/A	▶	▶	▶
	Al Baidha	200	0,31	46%	25%	▶	▶	▶		405	0,26	19%	-9%	▶	▶	▶		240	0,15	11%	51%	▶	▶	▶		750	0,00	374%	392%	▶	▶	▶
	Al Jawf	164	0,05	20%	2%	▶	▶	▶		430	0,19	26%	-3%	▶	▶	▶		200	0,14	-8%	26%	▶	▶	▶		900	3,00	468%	491%	▶	▶	▶
	Al Mahra	140	-0,07	2%	-12%	▶	▶	▶		295	-0,02	-14%	-33%	▶	▶	▶		280	0,14	29%	77%	▶	▶	▶		488	0,24	208%	220%	▶	▶	▶
	Al Mahweet	190	0,24	39%	19%	▶	▶	▶		355	0,08	4%	-20%	▶	▶	▶		240	0,23	11%	51%	▶	▶	▶		575	-0,22	263%	278%	▶	▶	▶
	Amran	178	0,10	30%	11%	▶	▶	▶		371	0,09	9%	-16%	▶	▶	▶		300	0,22	38%	89%	▶	▶	▶		2250	0,84	1321%	1377%	▶	▶	▶
	Dhamar	156	0,06	14%	-2%	▶	▶	▶		375	0,09	10%	-15%	▶	▶	▶		135	-0,15	-38%	-15%	▶	▶	▶		1000	0,00	532%	557%	▶	▶	▶
	Hadramout	150	-0,07	10%	-6%	▶	▶	▶		318	0,05	-7%	-28%	▶	▶	▶		250	0,18	15%	58%	▶	▶	▶		481	0,46	204%	216%	▶	▶	▶
	Hajja	191	0,06	40%	19%	▶	▶	▶		380	-0,01	11%	-14%	▶	▶	▶		210	-0,12	-3%	32%	▶	▶	▶		313	-0,54	97%	105%	▶	▶	▶
	Hodieda	N/A	N/A	N/A	N/A	▶	▶	▶		N/A	N/A	N/A	N/A	▶	▶	▶		N/A	N/A	N/A	N/A	▶	▶	▶		N/A	N/A	N/A	N/A	▶	▶	
	Ibb	185	-0,02	35%	16%	▶	▶	▶		413	0,13	21%	-7%	▶	▶	▶		190	0,03	-12%	20%	▶	▶	▶		750	-0,06	374%	392%	▶	▶	▶
	Laheg	246	0,15	80%	54%	▶	▶	▶		460	0,01	35%	4%	▶	▶	▶		310	0,03	43%	96%	▶	▶	▶		N/A	N/A	N/A	N/A	▶	▶	▶
	Mareb	181	0,08	32%	13%	▶	▶	▶		425	0,19	25%	-4%	▶	▶	▶		330	-0,08	52%	108%	▶	▶	▶		750	0,02	374%	392%	▶	▶	▶
	Rayma	250	0,06	83%	56%	▶	▶	▶		375	0,03	10%	-15%	▶	▶	▶		225	0,13	4%	42%	▶	▶	▶		1600	0,28	911%	951%	▶	▶	▶
	Sa'ada	202	-0,07	47%	26%	▶	▶	▶		378	-0,10	11%	-15%	▶	▶	▶		285	-0,04	31%	80%	▶	▶	▶		750	-0,21	374%	392%	▶	▶	▶
Sana'a	183	0,06	34%	14%	▶	▶	▶	345	0,07	1%	-22%	▶	▶	▶	250	0,11	15%	58%	▶	▶	▶	325	-0,33	105%	113%	▶	▶	▶				
Sana'a city	184	-0,02	35%	15%	▶	▶	▶	343	0,19	0%	-23%	▶	▶	▶	265	0,15	22%	67%	▶	▶	▶	325	0,30	105%	113%	▶	▶	▶				
Shabwa	178	0,06	30%	11%	▶	▶	▶	413	0,19	21%	-7%	▶	▶	▶	280	0,05	29%	77%	▶	▶	▶	800	-0,14	405%	425%	▶	▶	▶				
Soqatra	144	-0,18	5%	-10%	▶	▶	▶	305	0,02	-11%	-31%	▶	▶	▶	N/A	N/A	N/A	N/A	▶	▶	▶	225	0,50	42%	48%	▶	▶	▶				
Taiz	197	-0,01	44%	23%	▶	▶	▶	360	0,03	6%	-19%	▶	▶	▶	275	0,10	27%	73%	▶	▶	▶	750	N/A	374%	392%	▶	▶	▶				
Sugar (kg)	Abyan	323	0,36	51%	14%	▶	▶	▶	Red beans (kg)	500	N/A	60%	78%	▶	▶	▶	Cooking Gas (Bottle)	6600	-0,16	243%	119%	▶	▶	▶	Diesel (litre)	750	N/A	400%	406%	▶	▶	▶
	Addaleh	515	0,23	140%	82%	▶	▶	▶		500	0,00	60%	78%	▶	▶	▶		N/A	N/A	N/A	N/A	N/A	N/A	N/A		N/A	N/A	N/A	▶	▶	▶	
	Aden	800	1,50	274%	183%	▶	▶	▶		480	0,26	53%	71%	▶	▶	▶		N/A	N/A	N/A	N/A	▶	▶	▶		N/A	N/A	N/A	N/A	▶	▶	▶
	Al Baidha	425	0,21	98%	50%	▶	▶	▶		495	0,19	58%	76%	▶	▶	▶		4500	0,20	134%	49%	▶	▶	▶		1500	0,20	900%	912%	▶	▶	▶
	Al Jawf	310	0,24	45%	10%	▶	▶	▶		400	0,00	28%	43%	▶	▶	▶		4500	0,34	134%	49%	▶	▶	▶		800	2,20	433%	439%	▶	▶	▶
	Al Mahra	155	-0,08	-28%	-45%	▶	▶	▶		350	0,00	12%	25%	▶	▶	▶		4000	-0,23	108%	33%	▶	▶	▶		485	0,14	223%	227%	▶	▶	▶
	Al Mahweet	180	-0,17	-16%	-36%	▶	▶	▶		400	0,24	28%	43%	▶	▶	▶		4500	0,15	134%	49%	▶	▶	▶		900	0,13	500%	507%	▶	▶	▶
	Amran	224	-0,06	5%	-21%	▶	▶	▶		320	0,12	2%	14%	▶	▶	▶		4500	0,09	134%	49%	▶	▶	▶		1200	-0,04	700%	709%	▶	▶	▶
	Dhamar	155	-0,17	-28%	-45%	▶	▶	▶		385	0,05	23%	37%	▶	▶	▶		3750	0,00	95%	24%	▶	▶	▶		1250	0,00	733%	743%	▶	▶	▶
	Hadramout	161	-0,13	-25%	-43%	▶	▶	▶		380	0,10	21%	35%	▶	▶	▶		2825	-0,04	47%	-6%	▶	▶	▶		494	0,32	229%	233%	▶	▶	▶
	Hajja	240	0,05	12%	-15%	▶	▶	▶		328	-0,09	5%	17%	▶	▶	▶		4750	0,04	147%	58%	▶	▶	▶		1250	0,06	733%	743%	▶	▶	▶
	Hodieda	N/A	N/A	N/A	N/A	▶	▶	▶		N/A	N/A	N/A	N/A	▶	▶	▶		N/A	N/A	N/A	N/A	▶	▶	▶		N/A	N/A	N/A	N/A	▶	▶	
	Ibb	162	-0,18	-25%	-43%	▶	▶	▶		400	0,02	28%	43%	▶	▶	▶		6100	0,27	217%	102%	▶	▶	▶		1200	0,23	700%	709%	▶	▶	▶
	Laheg	270	0,03	26%	-5%	▶	▶	▶		N/A	N/A	N/A	N/A	▶	▶	▶		7000	0,11	264%	132%	▶	▶	▶		N/A	N/A	N/A	N/A	▶	▶	▶
	Mareb	270	-0,08	26%	-5%	▶	▶	▶		400	0,14	28%	43%	▶	▶	▶		5000	0,19	160%	66%	▶	▶	▶		750	0,05	400%	406%	▶	▶	▶
	Rayma	305	0,00	42%	8%	▶	▶	▶		365	0,18	16%	30%	▶	▶	▶		5500	0,07	186%	83%	▶	▶	▶		1850	0,00	1133%	1148%	▶	▶	▶
	Sa'ada	265	-0,20	24%	-6%	▶	▶	▶		430	0,04	37%	53%	▶	▶	▶		6750	0,28	251%	124%	▶	▶	▶		975	0,00	550%	558%	▶	▶	▶
Sana'a	300	0,14	40%	6%	▶	▶	▶	360	0,04	15%	28%	▶	▶	▶	4600	0,16	139%	53%	▶	▶	▶	350	-0,28	133%	136%	▶	▶	▶				
Sana'a city	285	0,10	33%	1%	▶	▶	▶	380	0,13	21%	35%	▶	▶	▶	4350	0,13	126%	44%	▶	▶	▶	375	0,15	150%	153%	▶	▶	▶				
Shabwa	167	-0,25	-22%	-41%	▶	▶	▶	280	0,65	-11%	0%	▶	▶	▶	4500	-0,18	134%	49%	▶	▶	▶	750	0,00	400%	406%	▶	▶	▶				
Soqatra	160	-0,23	-25%	-43%	▶	▶	▶	400	0,00	28%	43%	▶	▶	▶	4000	0,00	108%	33%	▶	▶	▶	200	0,33	33%	35%	▶	▶	▶				
Taiz	300	0,17	40%	6%	▶	▶	▶	500	0,09	60%	78%	▶	▶	▶	6500	0,18	238%	116%	▶	▶	▶	1000	N/A	567%	574%	▶	▶	▶				

▼ Price decrease below normal price fluctuation
▶ Normal Price Fluctuation
▲ Price increase above normal price fluctuation
Lowest Price
Higest Price
N/A Not Available
 All Prices in YER
 (+/- 5%) Change within month and from Previous Month
 (+/- 10%) Change from Previous Month (1M) and Pre-Crisis Period
 (+/- 15%) Change from Reference Year (2011)