



Yemen Weekly Market Situation Update

Week 1: July 2015

SUMMARY

- Overall situation of markets has generally showed a slight improvement in the first week of July 2015 compared to previous weeks as a result of reduced intensity of air strikes and conflicts. This was reflected in slightly better availability of food and other essential commodities as well as marginally lower prices despite increased demands during Ramadan.
- The national average price of wheat flour declined by 2% in the first week of July compared to that in June, but it was 30% higher than pre-crisis period and 11% more than in 2011. Fuel prices were also dropped by 2% nationally during the same period. Aden continued to suffer the most from the serious market irregularities resulted from war-induced blockade.
- Due to the combined effect of the nonstop war and increased demand during the Ramadan, the average cost of partial food basket rose by about 30% in June 2015 compared to the pre-crisis period and 10% more than in 2011.

Summary of retail prices of key commodities (in YER)

Wheat Flour

Current Ave. Price: **183**
 Min **130** Max **280**
 Ave. % Change: **-2%**
 Prices of wheat flour are generally stable compared to last month. Highest price recorded in Aden while Soqatra reported the lowest. Average price in the 1st week of July was higher by 34% than the pre-crisis period. Nearly two third of the governorates faced scarcity.

Onion

Current Ave. Price: **262**
 Min **200** Max **480**
 Ave. % Change: **1%**
 Prices of onion largely remained unchanged. Highest price observed in Lahej. Availability was deteriorated in some governorates such as Aden and Lahej.

Red Beans

Current Ave. Price: **400**
 Min **300** Max **550**
 Ave. % Change: **2%**
 Availability was similar to last month. Highest price observed in Taiz. Lowest price was in Sana'a. Average price of beans rose by 2% from June and 28% higher than the pre-crisis period.

Vegetable Oil

Current Ave. Price: **383**
 Min **300** Max **500**
 Ave. % Change: **4%**
 Despite similar availability like previous weeks, average price of vegetable oil increased by 4% from June. Al Jawf reported the highest price while lowest price recorded in Sana'a and Soqatra.

Sugar

Current Ave. Price: **257**
 Min **140** Max **600**
 Ave. % Change: **0%**
 Sugar was available in almost all markets. Average price remained unchanged from last month but rose by 20% from pre-crisis period. Highest price was in Aden and lowest in Dhamar.

Cooking Gas

Current Ave. Price: **5026**
 Min **4000** Max **7000**
 Ave. % Change: **2%**
 Price of cooking gas rose by 2% from June and 161% higher than the pre-crisis period. Lahej and Ibb had highest price while the lowest prices were from Sana'a City, Amran and Al Mahra.

Petrol:

Current Ave. Price: **689**
 Min **150** Max **1500**
 Ave. % Change: **-2%**

Availability of petrol was scarce in almost all governorates. Although average price dropped by 2% from last month, it remained much higher than pre-crisis period (335%). Highest price recorded in Addaleh while lowest price observed in Soqatra.

Diesel:

Current Ave. Price: **791**
 Min **150** Cooking **1500**
 Ave. % Change: **-2%**

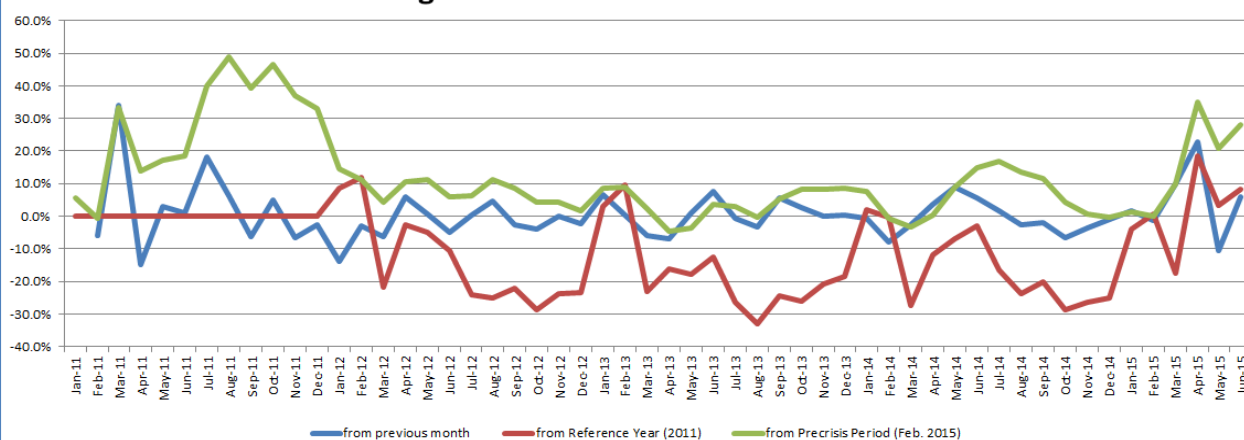
Shortage of diesel continued to be a serious problem throughout the country. Current average price is 427% higher than the pre-crisis period, though slightly lower than last month. Prices were highest in AlBaida and lowest in Soqatra.

Availability/Supply

	Wheat Flour	Sugar	Veg. Oil	Red Beans	Onion	Cooking gas	Petrol	Diesel
Abyan	SAV	AV	SAV	AV	SAV	NA	NA	SAV
Addaleh	SAV	SAV	SAV	NA	SAV	NA	SAV	SAV
Aden	SAV	SAV	SAV	SAV	NA	SAV	SAV	NA
Al Baidha	SAV	AV	SAV	AV	SAV	NA	NA	SAV
Al Jawf	SAV	AV	SAV	NA	SAV	SAV	SAV	SAV
Al Mahra	AV	AV	AV	AV	AV	SAV	SAV	AV
Al Mahweet	SAV	AV	AV	AV	AV	SAV	SAV	SAV
Amran	SAV	AV	AV	AV	AV	SAV	AV	SAV
Dhamar	SAV	AV	AV	AV	AV	SAV	SAV	SAV
Hadramout	AV	AV	SAV	AV	AV	SAV	SAV	AV
Hajja	AV	AV	SAV	AV	AV	SAV	SAV	SAV
Hodieda	AV	AV	AV	NA	AV	AV	NA	NA
Ibb	SAV	AV	AV	AV	AV	SAV	SAV	NA
Laheg	SAV	SAV	SAV	NA	SAV	SAV	NA	SAV
Mareb	SAV	SAV	AV	SAV	SAV	SAV	SAV	SAV
Rayma	SAV	SAV	SAV	SAV	AV	SAV	SAV	SAV
Sa'ada	AV	AV	SAV	AV	AV	SAV	SAV	SAV
Sana'a	SAV	AV	AV	AV	AV	AV	SAV	SAV
Sana'a city	AV	AV	AV	AV	AV	SAV	SAV	SAV
Shabwa	SAV	SAV	SAV	SAV	SAV	SAV	SAV	SAV
Soqatra	AV	AV	AV	SAV	NA	SAV	AV	AV
Taiz	AV	AV	AV	AV	AV	SAV	SAV	SAV

AV Generally Available
 SAV Sporadically Available
 NA Not Available

Changes on Costs of Partial Food Basket





Yemen Weekly Market Situation Update

Week 1: July 2015

Commodity	Market Area	Current Month Ave. to date				Degree of Change	Commodity	Current Month Ave. to date				Degree of Change	Commodity	Current Month Ave. to date				Degree of Change						
		1 M	Pre-Crisis	2011 (Yr Ave)	Within Month Trend			1 M	Pre-Crisis	2011 (Yr Ave)	Within Month Trend			1 M	Pre-Crisis	2011 (Yr Ave)	Within Month Trend		1 M	Pre-Crisis	2011 (Yr Ave)	Within Month Trend		
																							% Change from Stated Period	% Change from Stated Period
Wheat flour (kg)	Abyan	200	-10%	46%	25%	▼	Veg. Oil (litre)	370	-10%	8%	-17%	▼	Onion (kg)	370	31%	70%	133%	▲	Petrol (litre)	650	-26%	311%	327%	▼
	Addaleh	246	-8%	80%	54%	▼		488	14%	43%	10%	▲		380	20%	75%	140%	▲		1500	N/A	847%	885%	▲
	Aden	280	N/A	105%	75%	▲		445	7%	30%	0%	▲		N/A	N/A	N/A	N/A	▲		1400	N/A	784%	819%	▲
	Al Baidha	170	-19%	24%	6%	▼		340	-18%	0%	-23%	▼		250	3%	15%	58%	▲		600	-20%	279%	294%	▼
	Al Jawf	200	22%	46%	25%	▲		500	16%	47%	13%	▲		N/A	N/A	N/A	N/A	▲		N/A	N/A	N/A	N/A	▲
	Al Mahra	150	6%	10%	-6%	▲		315	5%	-8%	-29%	▼		200	-26%	-8%	26%	▼		475	-7%	200%	212%	▼
	Al Mahweet	180	-10%	32%	13%	▼		390	20%	14%	-12%	▲		200	-23%	-8%	26%	▼		500	-9%	216%	228%	▼
	Amran	158	-11%	16%	-1%	▼		375	1%	10%	-15%	▼		200	-20%	-8%	26%	▼		900	-47%	468%	491%	▼
	Dhamar	140	-2%	2%	-12%	▼		375	7%	10%	-15%	▼		200	43%	-8%	26%	▲		600	-26%	279%	294%	▼
	Hadramout	170	15%	24%	6%	▲		320	2%	-6%	-28%	▼		225	-10%	4%	42%	▼		500	-1%	216%	228%	▲
	Hajja	164	-11%	20%	3%	▼		350	-7%	3%	-21%	▼		200	-3%	-8%	26%	▲		750	48%	374%	392%	▲
	Al Hodieda	160	-27%	17%	0%	▼		375	-8%	10%	-15%	▼		200	0%	-8%	26%	▲		750	-29%	374%	392%	▼
	Ibb	152	-17%	11%	-5%	▼		425	2%	25%	-4%	▲		200	20%	-8%	26%	▲		600	-20%	279%	294%	▲
	Laheg	260	17%	90%	63%	▲		450	-1%	32%	2%	▲		480	57%	121%	203%	▲		N/A	N/A	N/A	N/A	▲
	Mareb	200	7%	46%	25%	▲		325	-24%	-5%	-27%	▼		450	41%	107%	184%	▲		850	13%	437%	458%	▲
	Rayma	220	-8%	61%	38%	▼		350	-5%	3%	-21%	▼		200	-8%	-8%	26%	▲		800	-43%	405%	425%	▼
	Sa'ada	160	-18%	17%	0%	▼		400	15%	17%	-10%	▲		250	-14%	15%	58%	▲		1000	33%	532%	557%	▲
	Sana'a	174	-5%	27%	9%	▲		300	-9%	-12%	-32%	▼		200	-14%	-8%	26%	▲		250	-6%	58%	64%	▼
	Sana'a city	184	-3%	35%	15%	▲		311	-6%	-9%	-30%	▼		220	-15%	1%	39%	▼		250	-6%	58%	64%	▲
	Shabwa	180	-2%	32%	13%	▲		483	31%	41%	9%	▲		300	-6%	38%	89%	▲		600	-22%	279%	294%	▼
Soqatra	130	-7%	-5%	-19%	▼	300	2%	-12%	-32%	▼	N/A	N/A	N/A	N/A	▲	150	-25%	-5%	-2%	▼				
Taiz	150	-17%	10%	-6%	▼	445	31%	30%	0%	▲	250	-6%	15%	58%	▲	650	-13%	311%	327%	▼				
Sugar (kg)	Abyan	280	-11%	31%	-1%	▼	Red beans (kg)	450	-6%	44%	60%	▼	Cooking Gas (Bottle)	5500	1%	186%	83%	▲	Diesel (litre)	700	0%	367%	372%	▲
	Addaleh	550	11%	157%	94%	▲		N/A	N/A	N/A	N/A	▲		N/A	N/A	N/A	▲	800		N/A	433%	439%	▲	
	Aden	600	0%	180%	112%	▲		450	0%	44%	60%	▲		6400	-6%	232%	112%	▼		N/A	N/A	N/A	N/A	▲
	Al Baidha	450	0%	110%	59%	▲		350	-30%	12%	25%	▼		5500	18%	186%	83%	▲		1500	0%	900%	912%	▲
	Al Jawf	250	-19%	17%	-12%	▼		N/A	N/A	N/A	N/A	▲		N/A	N/A	N/A	▲	850		6%	467%	473%	▲	
	Al Mahra	150	-2%	-30%	-47%	▼		400	9%	28%	43%	▲		4000	9%	108%	33%	▲		500	-1%	233%	237%	▲
	Al Mahweet	200	7%	-7%	-29%	▲		400	-8%	28%	43%	▲		4000	-14%	108%	33%	▼		1000	7%	567%	574%	▲
	Amran	200	1%	-7%	-29%	▼		400	43%	28%	43%	▲		4000	-8%	108%	33%	▲		750	-24%	400%	406%	▼
	Dhamar	140	-9%	-35%	-51%	▼		350	-6%	12%	25%	▲		4500	17%	134%	49%	▲		800	-21%	433%	439%	▲
	Hadramout	150	-5%	-30%	-47%	▼		425	10%	36%	51%	▲		4150	44%	116%	38%	▲		538	5%	258%	262%	▲
	Hajja	200	-12%	-7%	-29%	▼		350	4%	12%	25%	▲		5500	6%	186%	83%	▲		900	-8%	500%	507%	▲
	Al Hodieda	280	19%	31%	-1%	▲		400	0%	28%	43%	▲		N/A	N/A	N/A	▲	650		-40%	333%	338%	▼	
	Ibb	158	-1%	-26%	-44%	▼		400	0%	28%	43%	▲		7000	4%	264%	132%	▲		750	-17%	400%	406%	▼
	Laheg	260	4%	21%	-8%	▲		N/A	N/A	N/A	N/A	▲		7000	0%	264%	132%	▲		870	N/A	480%	487%	▲
	Mareb	210	-14%	-2%	-26%	▼		500	25%	60%	78%	▲		6000	13%	212%	99%	▲		850	13%	467%	473%	▲
	Rayma	310	1%	45%	10%	▲		320	-9%	2%	14%	▼		4300	-16%	123%	43%	▼		1400	-19%	833%	844%	▼
	Sa'ada	218	-8%	2%	-23%	▼		N/A	N/A	N/A	N/A	▲		5000	-25%	160%	66%	▲		1000	7%	567%	574%	▲
	Sana'a	250	-12%	17%	-12%	▼		300	-12%	-4%	7%	▼		4250	-3%	121%	41%	▲		350	24%	133%	136%	▲
	Sana'a city	250	-11%	17%	-12%	▼		350	-5%	12%	25%	▲		4000	-6%	108%	33%	▲		400	33%	167%	170%	▲
	Shabwa	180	4%	-16%	-36%	▲		400	22%	28%	43%	▲		5000	5%	160%	66%	▲		850	10%	467%	473%	▲
Soqatra	160	0%	-25%	-43%	▼	400	0%	28%	43%	▲	4600	15%	139%	53%	▲	150	-18%	0%	1%	▼				
Taiz	200	-29%	-7%	-29%	▼	550	10%	76%	96%	▲	4800	-26%	149%	59%	▼	1000	0%	567%	574%	▲				

▼ Price decrease below normal price fluctuation
 ▲ Normal Price Fluctuation
 ▲ Price increase above normal price fluctuation

Lowest Price
 Highest Price
 N/A Not Available

All Prices in YER

(+/- 5%)
 (+/- 10%)
 (+/- 15%)

Change within month and from Previous Month
 Change from Previous Month (1M) and Pre-Crisis Period
 Change from Reference Year (2011)