

SUMMARY

- The opening of Aden port with the delivery of large amount of food aid shipments and relatively better access to surrounding governorates have dramatically improved the supply of essential commodities after months of blockade. The governorates of Aden, Laheg, Ad Daleh, and Abyan have reported better availability of food and non-food commodities during the reporting period.

- Prices of commodities markedly declined in many southern governorates such as Aden, Laheg and Abyan following improved availability of goods. For instance, prices of wheat flour decreased by over 30% in Aden and Laheg from last week but still 101% and 41% higher in Aden and Laheg during the reporting week than the pre-crisis period. However, national average price of wheat was 37% higher than pre-crisis period while fuel prices rose by over 350% during the same time.

- The national average cost of partial food basket during the month of July 2015 was 30% higher than the pre-crisis period and rose by 2% from last month. The cost of living in the hardest hit governorates such as Aden, Laheg, Ad Daleh, Al Bayda, Sa'ada and Hajja continued to be the worst.

- As result, the overall food security situation in the most affected governorates has remained to be precarious and may further worsen without assistance.

Summary of retail prices of key commodities (in YER)

Wheat Flour

Current Ave. Price: **187**
Min **143** Max **275**
Ave. % Change: **1%**

Availability of wheat flour has lightly improved in the southern governorates. National prices of wheat flour rose by 1% from last month. Average price in July 2015 was higher by 37% than the pre-crisis period. Highest prices reported from Aden while the lowest was in Dhamar.

Onion

Current Ave. Price: **276**
Min **195** Max **438**
Ave. % Change: **6%**

National average prices of onion rose by 6% compared to last month and 27% from pre-crisis period. Prices were highest in Mareb and lowest in Dhamar. Supply was improved in several governorates.

Red Beans

Current Ave. Price: **423**
Min **315** Max **580**
Ave. % Change: **7%**

Availability of beans continued to be scarce due to the conflict that led the national price to rise by 7% from June and 35% higher than the pre-crisis period. Highest price observed in Laheg and lowest price was in Al Baida.

Vegetable Oil

Current Ave. Price: **386**
Min **306** Max **478**
Ave. % Change: **5%**

In the 4th week of July, availability of Vegetable oil was generally good in most of the governorates while remains scarce in southern areas. However, average national price of vegetable oil increased by 5% from June. Ad Daleh reported the highest price while lowest price recorded in Sana'a.

Sugar

Current Ave. Price: **261**
Min **142** Max **519**
Ave. % Change: **2%**

During the reporting period, sugar was available in almost all governorates. National average price rose by 2% from last month and higher by 22% than pre-crisis period. Highest price was in Aden and lowest in Dhamar.

Cooking Gas

Current Ave. Price: **5153**
Min **3850** Max **6833**
Ave. % Change: **5%**

Availability of cooking gas remains scarce in most of the governorates. Average price increased by 5% from June and 168% higher than the pre-crisis period. Ad Daleh had highest price but Abyan had the lowest.

Petrol:

Current Ave. Price: **611**
Min **275** Max **1050**
Ave. % Change: **-13%**

Petrol continued to be scarcely available in markets in most governorates. Prices were lower than last month by 13%, they remained much higher than pre-crisis period (286%). Highest price was in Adaleh and lowest in Sana'a and Soqatra.

Diesel:

Current Ave. Price: **732**
Min **255** Cooking **1175**
Ave. % Change: **-9%**

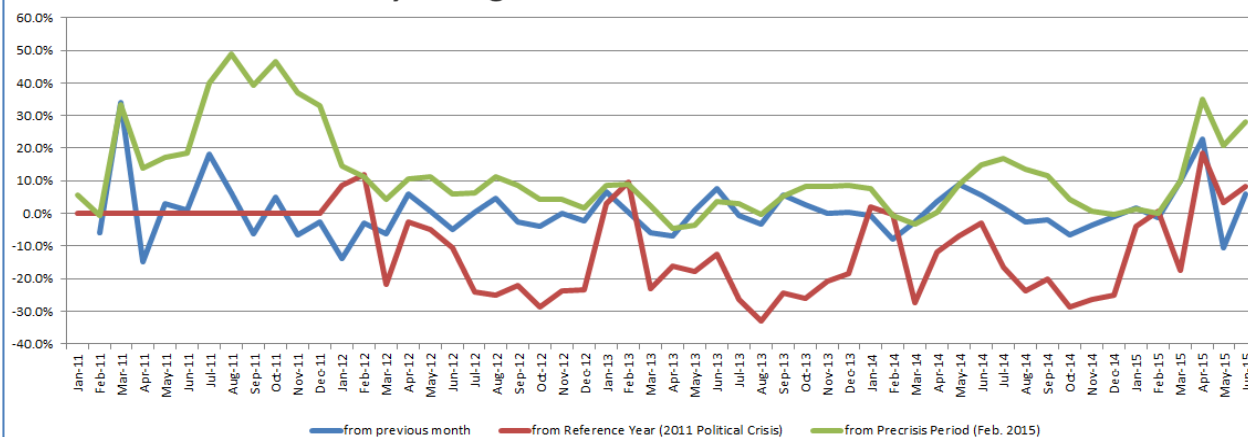
Diesel supply and availability improved during the week of reporting. However, average price was 388% higher than the pre-crisis period, but 9% more than last month. Prices were highest in Aden and lowest in Soqatra.

Availability/Supply

| | Wheat Flour | Sugar | Veg. Oil | Red Beans | Onion | Cooking gas | Petrol | Diesel |
|-------------|-------------|-------|----------|-----------|-------|-------------|--------|--------|
| Abyan | SAV | SAV | SAV | AV | SAV | SAV | SAV | SAV |
| Addaleh | SAV | SAV | SAV | NA | AV | SAV | SAV | SAV |
| Aden | SAV | SAV | SAV | SAV | AV | AV | SAV | SAV |
| Al Baidha | SAV | SAV | SAV | AV | SAV | SAV | SAV | SAV |
| Al Jawf | SAV | AV | SAV | SAV | SAV | SAV | SAV | SAV |
| Al Mahra | AV | AV | AV | AV | AV | AV | AV | AV |
| Al Mahweet | SAV | AV | AV | AV | AV | SAV | SAV | AV |
| Amran | AV | AV | AV | AV | AV | SAV | SAV | AV |
| Dhamar | AV | AV | AV | AV | AV | SAV | SAV | AV |
| Hadramout | AV | AV | AV | AV | AV | SAV | AV | AV |
| Hajja | AV | AV | AV | AV | AV | SAV | SAV | AV |
| Al Hodieda | AV | AV | AV | AV | AV | AV | AV | AV |
| Ibb | AV | SAV | AV | AV | AV | SAV | SAV | AV |
| Laheg | SAV | SAV | SAV | SAV | SAV | SAV | SAV | SAV |
| Mareb | AV | AV | SAV | AV | SAV | SAV | SAV | AV |
| Rayma | SAV | SAV | SAV | SAV | AV | SAV | SAV | AV |
| Sa'ada | AV | AV | SAV | AV | SAV | AV | SAV | AV |
| Sana'a | SAV | AV | AV | AV | AV | AV | SAV | AV |
| Sana'a city | AV | AV | AV | AV | AV | SAV | SAV | AV |
| Shabwa | SAV | AV | SAV | AV | AV | SAV | SAV | SAV |
| Soqatra | AV | AV | AV | SAV | AV | SAV | SAV | AV |
| Taiz | SAV | SAV | AV | SAV | SAV | SAV | SAV | SAV |

AV Generally Available
 SAV Sporadically Available
 NA Not Available

Monthly Changes on Costs of Partial Food Basket





Yemen Weekly Market Situation Update

Week 4: July 2015

| Market Area | Commodity | Current Month Ave. to date | Change of current avg. price compared to: | | | | Direction of Change | | |
|-------------|----------------------|----------------------------|---|------------|---------------|--------------------|---------------------|------------|---------------|
| | | | 1 M | Pre-Crisis | 2011 (Yr Ave) | Within Month Trend | 1 M | Pre-Crisis | 2011 (Yr Ave) |
| Abyan | Wheat flour (kg) | 217 | -2% | 58% | 36% | ▲ | ▲ | ▲ | ▲ |
| | Sugar (kg) | 308 | -2% | 44% | 9% | ▲ | ▲ | ▲ | ▲ |
| | Veg. Oil (litre) | 384 | -7% | 12% | -13% | ▲ | ▲ | ▲ | ▲ |
| | Red beans (kg) | 453 | -6% | 44% | 61% | ▲ | ▲ | ▲ | ▲ |
| | Onion (kg) | 360 | 27% | 66% | 127% | ▲ | ▲ | ▲ | ▲ |
| | Petrol (Litre) | 675 | -23% | 326% | 343% | ▲ | ▲ | ▲ | ▲ |
| | Diesel (Litre) | 700 | 0% | 367% | 372% | ▲ | ▲ | ▲ | ▲ |
| | Cooking Gas (Bottle) | 3850 | -30% | 100% | 28% | ▲ | ▲ | ▲ | ▲ |
| Adaleh | Wheat flour (kg) | 244 | -9% | 78% | 52% | ▲ | ▲ | ▲ | ▲ |
| | Sugar (kg) | 450 | -9% | 110% | 59% | ▲ | ▲ | ▲ | ▲ |
| | Veg. Oil (litre) | 478 | 12% | 40% | 8% | ▲ | ▲ | ▲ | ▲ |
| | Red beans (kg) | N/A | N/A | N/A | N/A | ▲ | ▲ | ▲ | ▲ |
| | Onion (kg) | 361 | 14% | 66% | 128% | ▲ | ▲ | ▲ | ▲ |
| | Petrol (Litre) | 1050 | N/A | 563% | 589% | ▲ | ▲ | ▲ | ▲ |
| | Diesel (Litre) | 761 | N/A | 408% | 413% | ▲ | ▲ | ▲ | ▲ |
| | Cooking Gas (Bottle) | 6833 | -15% | 255% | 127% | ▲ | ▲ | ▲ | ▲ |
| Aden | Wheat flour (kg) | 275 | N/A | 101% | 72% | ▲ | ▲ | ▲ | ▲ |
| | Sugar (kg) | 519 | -14% | 142% | 83% | ▲ | ▲ | ▲ | ▲ |
| | Veg. Oil (litre) | 455 | 9% | 33% | 3% | ▲ | ▲ | ▲ | ▲ |
| | Red beans (kg) | 513 | 14% | 64% | 83% | ▲ | ▲ | ▲ | ▲ |
| | Onion (kg) | 400 | -27% | 84% | 152% | ▲ | ▲ | ▲ | ▲ |
| | Petrol (Litre) | 888 | N/A | 461% | 483% | ▲ | ▲ | ▲ | ▲ |
| | Diesel (Litre) | 1080 | N/A | 620% | 628% | ▲ | ▲ | ▲ | ▲ |
| | Cooking Gas (Bottle) | 5550 | -18% | 188% | 84% | ▲ | ▲ | ▲ | ▲ |
| Al Baidha | Wheat flour (kg) | 168 | -20% | 23% | 5% | ▲ | ▲ | ▲ | ▲ |
| | Sugar (kg) | 370 | -18% | 73% | 31% | ▲ | ▲ | ▲ | ▲ |
| | Veg. Oil (litre) | 350 | -15% | 3% | -21% | ▲ | ▲ | ▲ | ▲ |
| | Red beans (kg) | 315 | -37% | 1% | 12% | ▲ | ▲ | ▲ | ▲ |
| | Onion (kg) | 258 | 6% | 19% | 62% | ▲ | ▲ | ▲ | ▲ |
| | Petrol (Litre) | 600 | -20% | 279% | 294% | ▲ | ▲ | ▲ | ▲ |
| | Diesel (Litre) | 1038 | -31% | 592% | 600% | ▲ | ▲ | ▲ | ▲ |
| | Cooking Gas (Bottle) | 5625 | 21% | 192% | 87% | ▲ | ▲ | ▲ | ▲ |
| Al Jawf | Wheat flour (kg) | 196 | 20% | 43% | 22% | ▲ | ▲ | ▲ | ▲ |
| | Sugar (kg) | 258 | -17% | 20% | -9% | ▲ | ▲ | ▲ | ▲ |
| | Veg. Oil (litre) | 441 | 3% | 29% | 0% | ▲ | ▲ | ▲ | ▲ |
| | Red beans (kg) | N/A | N/A | N/A | N/A | ▲ | ▲ | ▲ | ▲ |
| | Onion (kg) | 270 | 35% | 24% | 70% | ▲ | ▲ | ▲ | ▲ |
| | Petrol (Litre) | 750 | -17% | 374% | 392% | ▲ | ▲ | ▲ | ▲ |
| | Diesel (Litre) | 833 | 4% | 456% | 462% | ▲ | ▲ | ▲ | ▲ |
| | Cooking Gas (Bottle) | 6000 | 33% | 212% | 99% | ▲ | ▲ | ▲ | ▲ |
| Al Mahra | Wheat flour (kg) | 159 | 13% | 16% | -1% | ▲ | ▲ | ▲ | ▲ |
| | Sugar (kg) | 155 | 1% | -28% | -45% | ▲ | ▲ | ▲ | ▲ |
| | Veg. Oil (litre) | 324 | 8% | -5% | -27% | ▲ | ▲ | ▲ | ▲ |
| | Red beans (kg) | 403 | 10% | 28% | 43% | ▲ | ▲ | ▲ | ▲ |
| | Onion (kg) | 225 | -17% | 4% | 42% | ▲ | ▲ | ▲ | ▲ |
| | Petrol (Litre) | 463 | -9% | 192% | 204% | ▲ | ▲ | ▲ | ▲ |
| | Diesel (Litre) | 450 | -11% | 200% | 203% | ▲ | ▲ | ▲ | ▲ |
| | Cooking Gas (Bottle) | 4200 | 15% | 118% | 39% | ▲ | ▲ | ▲ | ▲ |
| Al Mahweet | Wheat flour (kg) | 181 | -10% | 32% | 13% | ▲ | ▲ | ▲ | ▲ |
| | Sugar (kg) | 195 | 4% | -9% | -31% | ▲ | ▲ | ▲ | ▲ |
| | Veg. Oil (litre) | 371 | 14% | 9% | -16% | ▲ | ▲ | ▲ | ▲ |
| | Red beans (kg) | 425 | -2% | 36% | 51% | ▲ | ▲ | ▲ | ▲ |
| | Onion (kg) | 205 | -21% | -6% | 29% | ▲ | ▲ | ▲ | ▲ |
| | Petrol (Litre) | 463 | -16% | 192% | 204% | ▲ | ▲ | ▲ | ▲ |
| | Diesel (Litre) | 813 | -13% | 442% | 448% | ▲ | ▲ | ▲ | ▲ |
| | Cooking Gas (Bottle) | 4250 | -9% | 121% | 41% | ▲ | ▲ | ▲ | ▲ |
| Amran | Wheat flour (kg) | 152 | -15% | 11% | -5% | ▲ | ▲ | ▲ | ▲ |
| | Sugar (kg) | 185 | -7% | -14% | -35% | ▲ | ▲ | ▲ | ▲ |
| | Veg. Oil (litre) | 358 | -4% | 5% | -19% | ▲ | ▲ | ▲ | ▲ |
| | Red beans (kg) | 390 | 39% | 24% | 39% | ▲ | ▲ | ▲ | ▲ |
| | Onion (kg) | 198 | -21% | -9% | 25% | ▲ | ▲ | ▲ | ▲ |
| | Petrol (Litre) | 713 | -58% | 350% | 368% | ▲ | ▲ | ▲ | ▲ |
| | Diesel (Litre) | 656 | -33% | 338% | 343% | ▲ | ▲ | ▲ | ▲ |
| | Cooking Gas (Bottle) | 4150 | -4% | 116% | 38% | ▲ | ▲ | ▲ | ▲ |
| Dhahar | Wheat flour (kg) | 143 | 0% | 5% | -11% | ▲ | ▲ | ▲ | ▲ |
| | Sugar (kg) | 142 | -8% | -34% | -50% | ▲ | ▲ | ▲ | ▲ |
| | Veg. Oil (litre) | 369 | 5% | 8% | -17% | ▲ | ▲ | ▲ | ▲ |
| | Red beans (kg) | 368 | -2% | 17% | 31% | ▲ | ▲ | ▲ | ▲ |
| | Onion (kg) | 195 | 39% | -10% | 23% | ▲ | ▲ | ▲ | ▲ |
| | Petrol (Litre) | 575 | -29% | 263% | 278% | ▲ | ▲ | ▲ | ▲ |
| | Diesel (Litre) | 688 | -32% | 358% | 364% | ▲ | ▲ | ▲ | ▲ |
| | Cooking Gas (Bottle) | 4375 | 14% | 127% | 45% | ▲ | ▲ | ▲ | ▲ |
| Hadramout | Wheat flour (kg) | 171 | 15% | 25% | 7% | ▲ | ▲ | ▲ | ▲ |
| | Sugar (kg) | 156 | -1% | -27% | -45% | ▲ | ▲ | ▲ | ▲ |
| | Veg. Oil (litre) | 329 | 4% | -4% | -26% | ▲ | ▲ | ▲ | ▲ |
| | Red beans (kg) | 423 | 9% | 35% | 51% | ▲ | ▲ | ▲ | ▲ |
| | Onion (kg) | 250 | 0% | 15% | 58% | ▲ | ▲ | ▲ | ▲ |
| | Petrol (Litre) | 481 | -5% | 204% | 216% | ▲ | ▲ | ▲ | ▲ |
| | Diesel (Litre) | 497 | -3% | 231% | 235% | ▲ | ▲ | ▲ | ▲ |
| | Cooking Gas (Bottle) | 4306 | 49% | 124% | 43% | ▲ | ▲ | ▲ | ▲ |
| Hajja | Wheat flour (kg) | 168 | -9% | 23% | 5% | ▲ | ▲ | ▲ | ▲ |
| | Sugar (kg) | 233 | 3% | 9% | -18% | ▲ | ▲ | ▲ | ▲ |
| | Veg. Oil (litre) | 364 | -4% | 7% | -18% | ▲ | ▲ | ▲ | ▲ |
| | Red beans (kg) | 368 | 10% | 17% | 31% | ▲ | ▲ | ▲ | ▲ |
| | Onion (kg) | 220 | 6% | 1% | 39% | ▲ | ▲ | ▲ | ▲ |
| | Petrol (Litre) | 788 | 55% | 397% | 417% | ▲ | ▲ | ▲ | ▲ |
| | Diesel (Litre) | 744 | -24% | 396% | 402% | ▲ | ▲ | ▲ | ▲ |
| | Cooking Gas (Bottle) | 5375 | 4% | 179% | 78% | ▲ | ▲ | ▲ | ▲ |
| Ibb | Wheat flour (kg) | 159 | -13% | 16% | -1% | ▲ | ▲ | ▲ | ▲ |
| | Sugar (kg) | 169 | 5% | -21% | -40% | ▲ | ▲ | ▲ | ▲ |
| | Veg. Oil (litre) | 443 | 6% | 30% | 0% | ▲ | ▲ | ▲ | ▲ |
| | Red beans (kg) | 450 | 13% | 44% | 60% | ▲ | ▲ | ▲ | ▲ |
| | Onion (kg) | 210 | 26% | -3% | 32% | ▲ | ▲ | ▲ | ▲ |
| | Petrol (Litre) | 625 | -17% | 295% | 310% | ▲ | ▲ | ▲ | ▲ |
| | Diesel (Litre) | 731 | -19% | 388% | 393% | ▲ | ▲ | ▲ | ▲ |
| | Cooking Gas (Bottle) | 6000 | -11% | 212% | 99% | ▲ | ▲ | ▲ | ▲ |
| Laheg | Wheat flour (kg) | 260 | 17% | 90% | 63% | ▲ | ▲ | ▲ | ▲ |
| | Sugar (kg) | 275 | 10% | 28% | -3% | ▲ | ▲ | ▲ | ▲ |
| | Veg. Oil (litre) | 458 | 1% | 34% | 3% | ▲ | ▲ | ▲ | ▲ |
| | Red beans (kg) | N/A | N/A | N/A | N/A | ▲ | ▲ | ▲ | ▲ |
| | Onion (kg) | 435 | 43% | 100% | 174% | ▲ | ▲ | ▲ | ▲ |
| | Petrol (Litre) | 375 | N/A | 137% | 146% | ▲ | ▲ | ▲ | ▲ |
| | Diesel (Litre) | 943 | N/A | 528% | 536% | ▲ | ▲ | ▲ | ▲ |
| | Cooking Gas (Bottle) | 6667 | -4% | 246% | 121% | ▲ | ▲ | ▲ | ▲ |
| Mareb | Wheat flour (kg) | 194 | 3% | 41% | 21% | ▲ | ▲ | ▲ | ▲ |
| | Sugar (kg) | 211 | -13% | -1% | -25% | ▲ | ▲ | ▲ | ▲ |
| | Veg. Oil (litre) | 354 | -17% | 4% | -20% | ▲ | ▲ | ▲ | ▲ |
| | Red beans (kg) | 483 | 21% | 54% | 72% | ▲ | ▲ | ▲ | ▲ |
| | Onion (kg) | 438 | 37% | 102% | 176% | ▲ | ▲ | ▲ | ▲ |
| | Petrol (Litre) | 713 | -5% | 350% | 368% | ▲ | ▲ | ▲ | ▲ |
| | Diesel (Litre) | 725 | -3% | 383% | 389% | ▲ | ▲ | ▲ | ▲ |
| | Cooking Gas (Bottle) | 5500 | 3% | 186% | 83% | ▲ | ▲ | ▲ | ▲ |
| Sana'a city | Wheat flour (kg) | 182 | -4% | 33% | 14% | ▲ | ▲ | ▲ | ▲ |
| | Sugar (kg) | 264 | -6% | 23% | -7% | ▲ | ▲ | ▲ | ▲ |
| | Veg. Oil (litre) | 312 | -6% | -9% | -30% | ▲ | ▲ | ▲ | ▲ |
| | Red beans (kg) | 350 | -5% | 12% | 25% | ▲ | ▲ | ▲ | ▲ |
| | Onion (kg) | 223 | -14% | 2% | 40% | ▲ | ▲ | ▲ | ▲ |
| | Petrol (Litre) | 275 | 3% | 74% | 81% | ▲ | ▲ | ▲ | ▲ |
| | Diesel (Litre) | 338 | 13% | 125% | 128% | ▲ | ▲ | ▲ | ▲ |
| | Cooking Gas (Bottle) | 4500 | 6% | 134% | 49% | ▲ | ▲ | ▲ | ▲ |
| Sana'a | Wheat flour (kg) | 173 | -6% | 26% | 8% | ▲ | ▲ | ▲ | ▲ |
| | Sugar (kg) | 260 | -8% | 21% | -8% | ▲ | ▲ | ▲ | ▲ |
| | Veg. Oil (litre) | 306 | -7% | -10% | -31% | ▲ | ▲ | ▲ | ▲ |
| | Red beans (kg) | 318 | -7% | 1% | 13% | ▲ | ▲ | ▲ | ▲ |
| | Onion (kg) | 210 | -10% | -3% | 32% | ▲ | ▲ | ▲ | ▲ |
| | Petrol (Litre) | 275 | 3% | 74% | 81% | ▲ | ▲ | ▲ | ▲ |
| | Diesel (Litre) | 325 | 15% | 117% | 119% | ▲ | ▲ | ▲ | ▲ |
| | Cooking Gas (Bottle) | 4313 | -2% | 124% | 43% | ▲ | ▲ | ▲ | ▲ |
| Shabwa | Wheat flour (kg) | 176 | -4% | 29% | 10% | ▲ | ▲ | ▲ | ▲ |
| | Sugar (kg) | 193 | 11% | -10% | -32% | ▲ | ▲ | ▲ | ▲ |
| | Veg. Oil (litre) | 469 | 27% | 38% | 6% | ▲ | ▲ | ▲ | ▲ |
| | Red beans (kg) | 415 | 27% | 32% | 48% | ▲ | ▲ | ▲ | ▲ |
| | Onion (kg) | 320 | 0% | 47% | 102% | ▲ | ▲ | ▲ | ▲ |
| | Petrol (Litre) | 550 | -28% | 247% | 261% | ▲ | ▲ | ▲ | ▲ |
| | Diesel (Litre) | 713 | -8% | 375% | 380% | ▲ | ▲ | ▲ | ▲ |
| | Cooking Gas (Bottle) | 5125 | 8% | 166% | 70% | ▲ | ▲ | ▲ | ▲ |
| Soqatra | Wheat flour (kg) | 155 | 11% | 13% | -3% | ▲ | ▲ | ▲ | ▲ |
| | Sugar (kg) | 180 | 13% | -16% | -36% | ▲ | ▲ | ▲ | ▲ |
| | Veg. Oil (litre) | 324 | 10% | -5% | -27% | ▲ | ▲ | ▲ | ▲ |
| | Red beans (kg) | 420 | 5% | 34% | 50% | ▲ | ▲ | ▲ | ▲ |
| | Onion (kg) | 243 | N/A | 12% | 53% | ▲ | ▲ | ▲ | ▲ |
| | Petrol (Litre) | 275 | 38% | 74% | 81% | ▲ | ▲ | ▲ | ▲ |
| | Diesel (Litre) | 255 | 39% | 70% | 72% | ▲ | ▲ | ▲ | ▲ |
| | Cooking Gas (Bottle) | 5400 | 35% | 181% | 79% | ▲ | ▲ | ▲ | ▲ |
| Taiz | Wheat flour (kg) | 190 | 5% | 39% | 19% | ▲ | ▲ | ▲ | ▲ |
| | Sugar (kg) | 438 | 54% | 104% | 55% | ▲ | ▲ | ▲ | ▲ |
| | Veg. Oil (litre) | 466 | 37% | 36% | 5% | ▲ | ▲ | ▲ | ▲ |
| | Red beans (kg) | 538 | 8% | 72% | 92% | ▲ | ▲ | ▲ | ▲ |
| | Onion (kg) | 338 | 27% | 55% | 113% | ▲ | ▲ | ▲ | ▲ |
| | Petrol (Litre) | | | | | | | | |



Yemen Weekly Market Situation Update

Week 4: July 2015

| Commodity | Market Area | Current Month Ave. to date | | | Degree of Change | | | Commodity | Current Month Ave. to date | | | Degree of Change | | | Commodity | Current Month Ave. to date | | | Degree of Change | | | | | | | | | |
|------------------|-------------|----------------------------|------------|---------------|--------------------|-----|------------|------------------|----------------------------|------|------------|------------------|--------------------|-----|----------------------|----------------------------|---------------|------|------------------|---------------|--------------------|----------------|------------|---------------|------|------|---|---|
| | | 1 M | Pre-Crisis | 2011 (Yr Ave) | Within Month Trend | 1 M | Pre-Crisis | | 2011 (Yr Ave) | 1 M | Pre-Crisis | 2011 (Yr Ave) | Within Month Trend | 1 M | | Pre-Crisis | 2011 (Yr Ave) | 1 M | Pre-Crisis | 2011 (Yr Ave) | Within Month Trend | 1 M | Pre-Crisis | 2011 (Yr Ave) | | | | |
| Wheat flour (kg) | Abyan | 217 | -2% | 58% | 36% | ▲ | ▲ | Veg. Oil (litre) | 384 | -7% | 12% | -13% | ▲ | ▲ | Onion (kg) | 360 | 27% | 66% | 127% | ▲ | ▲ | Petrol (litre) | 675 | -23% | 326% | 343% | ▲ | ▲ |
| | Addaleh | 244 | -9% | 78% | 52% | ▲ | ▲ | | 478 | 12% | 40% | 8% | ▲ | ▲ | | 361 | 14% | 66% | 128% | ▲ | ▲ | | 1050 | N/A | 563% | 589% | ▲ | ▲ |
| | Aden | 275 | N/A | 101% | 72% | ▲ | ▲ | | 455 | 9% | 33% | 3% | ▲ | ▲ | | 400 | -27% | 84% | 152% | ▲ | ▲ | | 888 | N/A | 461% | 483% | ▲ | ▲ |
| | Al Baidha | 168 | -20% | 23% | 5% | ▲ | ▲ | | 350 | -15% | 3% | -21% | ▲ | ▲ | | 258 | 6% | 19% | 62% | ▲ | ▲ | | 600 | -20% | 279% | 294% | ▲ | ▲ |
| | Al Jawf | 196 | 20% | 43% | 22% | ▲ | ▲ | | 441 | 3% | 29% | 0% | ▲ | ▲ | | 270 | 35% | 24% | 70% | ▲ | ▲ | | 750 | -17% | 374% | 392% | ▲ | ▲ |
| | Al Mahra | 159 | 13% | 16% | -1% | ▲ | ▲ | | 324 | 8% | -5% | -27% | ▲ | ▲ | | 225 | -17% | 4% | 42% | ▲ | ▲ | | 463 | -9% | 192% | 204% | ▲ | ▲ |
| | Al Mahweet | 181 | -10% | 32% | 13% | ▲ | ▲ | | 371 | 14% | 9% | -16% | ▲ | ▲ | | 205 | -21% | -6% | 29% | ▲ | ▲ | | 463 | -16% | 192% | 204% | ▲ | ▲ |
| | Amran | 152 | -15% | 11% | -5% | ▲ | ▲ | | 358 | -4% | 5% | -19% | ▲ | ▲ | | 198 | -21% | -9% | 25% | ▲ | ▲ | | 713 | -58% | 350% | 368% | ▲ | ▲ |
| | Dhamar | 143 | 0% | 5% | -11% | ▲ | ▲ | | 369 | 5% | 8% | -17% | ▲ | ▲ | | 195 | 39% | -10% | 23% | ▲ | ▲ | | 575 | -29% | 263% | 278% | ▲ | ▲ |
| | Hadramout | 171 | 15% | 25% | 7% | ▲ | ▲ | | 329 | 4% | -4% | -26% | ▲ | ▲ | | 250 | 0% | 15% | 58% | ▲ | ▲ | | 481 | -5% | 204% | 216% | ▲ | ▲ |
| | Hajja | 168 | -9% | 23% | 5% | ▲ | ▲ | | 364 | -4% | 7% | -18% | ▲ | ▲ | | 220 | 6% | 1% | 39% | ▲ | ▲ | | 788 | 55% | 397% | 417% | ▲ | ▲ |
| | Al Hodieda | 160 | -27% | 17% | 0% | ▲ | ▲ | | 370 | -9% | 8% | -17% | ▲ | ▲ | | 205 | 2% | -6% | 29% | ▲ | ▲ | | 600 | -43% | 279% | 294% | ▲ | ▲ |
| | Ibb | 159 | -13% | 16% | -1% | ▲ | ▲ | | 443 | 6% | 30% | 0% | ▲ | ▲ | | 210 | 26% | -3% | 32% | ▲ | ▲ | | 625 | -17% | 295% | 310% | ▲ | ▲ |
| | Laheg | 260 | 17% | 90% | 63% | ▲ | ▲ | | 458 | 1% | 34% | 3% | ▲ | ▲ | | 435 | 43% | 100% | 174% | ▲ | ▲ | | 375 | N/A | 137% | 146% | ▲ | ▲ |
| | Mareb | 194 | 3% | 41% | 21% | ▲ | ▲ | | 354 | -17% | 4% | -20% | ▲ | ▲ | | 438 | 37% | 102% | 176% | ▲ | ▲ | | 713 | -5% | 350% | 368% | ▲ | ▲ |
| | Rayma | 223 | -7% | 63% | 39% | ▲ | ▲ | | 356 | -3% | 4% | -20% | ▲ | ▲ | | 213 | -2% | -2% | 34% | ▲ | ▲ | | 725 | -48% | 358% | 376% | ▲ | ▲ |
| | Sa'ada | 172 | -12% | 25% | 7% | ▲ | ▲ | | 403 | 16% | 18% | -9% | ▲ | ▲ | | 293 | 1% | 35% | 84% | ▲ | ▲ | | 856 | 14% | 441% | 462% | ▲ | ▲ |
| | Sana'a | 173 | -6% | 26% | 8% | ▲ | ▲ | | 306 | -7% | -10% | -31% | ▲ | ▲ | | 210 | -10% | -3% | 32% | ▲ | ▲ | | 275 | 3% | 74% | 81% | ▲ | ▲ |
| | Sana'a city | 182 | -4% | 33% | 14% | ▲ | ▲ | | 312 | -6% | -9% | -30% | ▲ | ▲ | | 223 | -14% | 2% | 40% | ▲ | ▲ | | 275 | 3% | 74% | 81% | ▲ | ▲ |
| | Shabwa | 176 | -4% | 29% | 10% | ▲ | ▲ | | 469 | 27% | 38% | 6% | ▲ | ▲ | | 320 | 0% | 47% | 102% | ▲ | ▲ | | 550 | -28% | 247% | 261% | ▲ | ▲ |
| Soqatra | 155 | 11% | 13% | -3% | ▲ | ▲ | 324 | 10% | -5% | -27% | ▲ | ▲ | 243 | N/A | 12% | 53% | ▲ | ▲ | 275 | 38% | 74% | 81% | ▲ | ▲ | | | | |
| Taiz | 190 | 5% | 39% | 19% | ▲ | ▲ | 466 | 37% | 36% | 5% | ▲ | ▲ | 338 | 27% | 55% | 113% | ▲ | ▲ | 738 | -2% | 366% | 384% | ▲ | ▲ | | | | |
| Sugar (kg) | Abyan | 308 | -2% | 44% | 9% | ▲ | ▲ | Red beans (kg) | 453 | -6% | 44% | 61% | ▲ | ▲ | Cooking Gas (Bottle) | 3850 | -30% | 100% | 28% | ▲ | ▲ | Diesel (litre) | 700 | 0% | 367% | 372% | ▲ | ▲ |
| | Addaleh | 450 | -9% | 110% | 59% | ▲ | ▲ | | N/A | N/A | N/A | N/A | ▲ | ▲ | | 6833 | -15% | 255% | 127% | ▲ | ▲ | | 761 | N/A | 408% | 413% | ▲ | ▲ |
| | Aden | 519 | -14% | 142% | 83% | ▲ | ▲ | | 513 | 14% | 64% | 83% | ▲ | ▲ | | 5550 | -18% | 188% | 84% | ▲ | ▲ | | 1080 | N/A | 620% | 628% | ▲ | ▲ |
| | Al Baidha | 370 | -18% | 73% | 31% | ▲ | ▲ | | 315 | -37% | 1% | 12% | ▲ | ▲ | | 5625 | 21% | 192% | 87% | ▲ | ▲ | | 1038 | -31% | 592% | 600% | ▲ | ▲ |
| | Al Jawf | 258 | -17% | 20% | -9% | ▲ | ▲ | | 450 | 13% | 44% | 60% | ▲ | ▲ | | 6000 | 33% | 212% | 99% | ▲ | ▲ | | 833 | 4% | 456% | 462% | ▲ | ▲ |
| | Al Mahra | 155 | 1% | -28% | -45% | ▲ | ▲ | | 403 | 10% | 28% | 43% | ▲ | ▲ | | 4200 | 15% | 118% | 39% | ▲ | ▲ | | 450 | -11% | 200% | 203% | ▲ | ▲ |
| | Al Mahweet | 195 | 4% | -9% | -31% | ▲ | ▲ | | 425 | -2% | 36% | 51% | ▲ | ▲ | | 4250 | -9% | 121% | 41% | ▲ | ▲ | | 813 | -13% | 442% | 448% | ▲ | ▲ |
| | Amran | 185 | -7% | -14% | -35% | ▲ | ▲ | | 390 | 39% | 24% | 39% | ▲ | ▲ | | 4150 | -4% | 116% | 38% | ▲ | ▲ | | 656 | -33% | 338% | 343% | ▲ | ▲ |
| | Dhamar | 142 | -8% | -34% | -50% | ▲ | ▲ | | 368 | -2% | 17% | 31% | ▲ | ▲ | | 4375 | 14% | 127% | 45% | ▲ | ▲ | | 688 | -32% | 358% | 364% | ▲ | ▲ |
| | Hadramout | 156 | -1% | -27% | -45% | ▲ | ▲ | | 423 | 9% | 35% | 51% | ▲ | ▲ | | 4306 | 49% | 124% | 43% | ▲ | ▲ | | 497 | -3% | 231% | 235% | ▲ | ▲ |
| | Hajja | 233 | 3% | 9% | -18% | ▲ | ▲ | | 368 | 10% | 17% | 31% | ▲ | ▲ | | 5375 | 4% | 179% | 78% | ▲ | ▲ | | 744 | -24% | 396% | 402% | ▲ | ▲ |
| | Al Hodieda | 279 | 19% | 30% | -2% | ▲ | ▲ | | 393 | -2% | 25% | 40% | ▲ | ▲ | | 5167 | 3% | 168% | 72% | ▲ | ▲ | | 700 | -35% | 367% | 372% | ▲ | ▲ |
| | Ibb | 169 | 5% | -21% | -40% | ▲ | ▲ | | 450 | 13% | 44% | 60% | ▲ | ▲ | | 6000 | -11% | 212% | 99% | ▲ | ▲ | | 731 | -19% | 388% | 393% | ▲ | ▲ |
| | Laheg | 275 | 10% | 28% | -3% | ▲ | ▲ | | 580 | N/A | 85% | 107% | ▲ | ▲ | | 6667 | -4% | 246% | 121% | ▲ | ▲ | | 943 | N/A | 528% | 536% | ▲ | ▲ |
| | Mareb | 211 | -13% | -1% | -25% | ▲ | ▲ | | 483 | 21% | 54% | 72% | ▲ | ▲ | | 5500 | 3% | 186% | 83% | ▲ | ▲ | | 725 | -3% | 383% | 389% | ▲ | ▲ |
| | Rayma | 294 | -4% | 37% | 4% | ▲ | ▲ | | 333 | -5% | 6% | 18% | ▲ | ▲ | | 4475 | -12% | 132% | 49% | ▲ | ▲ | | 1000 | -42% | 567% | 574% | ▲ | ▲ |
| | Sa'ada | 218 | -8% | 2% | -23% | ▲ | ▲ | | 500 | 16% | 60% | 78% | ▲ | ▲ | | 5625 | -16% | 192% | 87% | ▲ | ▲ | | 950 | 2% | 533% | 541% | ▲ | ▲ |
| | Sana'a | 260 | -8% | 21% | -8% | ▲ | ▲ | | 318 | -7% | 1% | 13% | ▲ | ▲ | | 4313 | -2% | 124% | 43% | ▲ | ▲ | | 325 | 15% | 117% | 119% | ▲ | ▲ |
| | Sana'a city | 264 | -6% | 23% | -7% | ▲ | ▲ | | 350 | -5% | 12% | 25% | ▲ | ▲ | | 4500 | 6% | 134% | 49% | ▲ | ▲ | | 338 | 13% | 125% | 128% | ▲ | ▲ |
| | Shabwa | 193 | 11% | -10% | -32% | ▲ | ▲ | | 415 | 27% | 32% | 48% | ▲ | ▲ | | 5125 | 8% | 166% | 70% | ▲ | ▲ | | 713 | -8% | 375% | 380% | ▲ | ▲ |
| Soqatra | 180 | 13% | -16% | -36% | ▲ | ▲ | 420 | 5% | 34% | 50% | ▲ | ▲ | 5400 | 35% | 181% | 79% | ▲ | ▲ | 255 | 39% | 70% | 72% | ▲ | ▲ | | | | |
| Taiz | 438 | 54% | 104% | 55% | ▲ | ▲ | 538 | 8% | 72% | 92% | ▲ | ▲ | 6075 | -7% | 216% | 102% | ▲ | ▲ | 1175 | 18% | 683% | 692% | ▲ | ▲ | | | | |

▼ Price decrease below normal price fluctuation
 ▲ Normal Price Fluctuation
 ▲ Price increase above normal price fluctuation
 Lowest Price
 Highest Price
 N/A Not Available
 All Prices in YER
 (+/- 5%)
 (+/- 10%)
 (+/- 15%)
 Change within month and from Previous Month
 Change from Previous Month (1M) and Pre-Crisis Period
 Change from Reference Year (2011)