



Yemen Weekly Market Situation Update

Weeks 1 & 2: August 2015

SUMMARY

- The supply and availability of food commodities continued to improve across the majority of the governorates following the opening of Aden ports and roads connecting to surrounding governorates. However, despite minor improvements in the southern governorates, availability of fuel (diesel, petrol and cooking gas) remained to be scarce in most parts of the country.
- Prices of commodities continued to drop in most of the governorates as a result of improved availability and supply. National average price of wheat flour decreased by 16% from last month but still 15% higher than the pre-crisis level. National average price of fuel also reduced by over 35% during the reporting period compared to last month, but 120% higher than the pre-crisis time.
- During the reporting period, the national average cost of partial food basket was about 5% lower than last month but over 25% more than the pre-crisis level. The overall food security situation during the first two weeks of August is believed to be slightly improved compared to July 2015.
- Nonetheless, the high level of food insecurity is likely to persist in the most affected governorates where conflicts and airstrikes have still continued.

Summary of retail prices of key commodities (in YER)

Wheat Flour

Current Ave. Price: **157**
 Min **120** Max **220**
 Ave. % Change: **-16%**

Availability of wheat flour has improved in most governorates. As a result, national average prices dropped by 16% from last month but 15% higher than the pre-crisis period. The highest price reported from Rayma while the lowest price recorded in Amran and Al Hodieda.

Onion

Current Ave. Price: **253**
 Min **100** Max **600**
 Ave. % Change: **-7%**

Supply of onion was improved across all governorates. National average prices of onion reduced by 7% compared to last month but 16% more than the pre-crisis period. Price was highest in Soqatra and lowest in Amran.

Red Beans

Current Ave. Price: **397**
 Min **320** Max **500**
 Ave. % Change: **-6%**

Except Ad Daleh and Lahej, all governorates had better availability of beans. The national price declined by 6% from July but 27% higher than the pre-crisis period. Highest prices observed in Aden, Taiz and Mareb while Raima reported the lowest.

Vegetable Oil

Current Ave. Price: **343**
 Min **190** Max **450**
 Ave. % Change: **-10%**

In the first two weeks of August, availability of vegetable oil has improved markedly in almost all the governorates while though scarcity prevailed in Abyan, Al Baidha, Al Jawf, Sa'ada and Raima. Average national price decreased by 10% from July. Lahej reported the highest price while lowest price recorded in Ad Daleh.

Sugar

Current Ave. Price: **174**
 Min **122** Max **240**
 Ave. % Change: **-32%**

Sugar was available in all governorates except Lahej, Rayma and Ibb. National average price dramatically dropped by 32% from last month. Highest price was in Al Jawf and lowest in Amran.

Cooking Gas

Current Ave. Price: **4081**
 Min **2000** Max **8000**
 Ave. % Change: **-20%**

Despite the continued scarcity of cooking gas in most governorates, the average price declined by 20% from last month but 112% higher than the pre-crisis period. Soqatra had the highest price while Al Hodieda reported the lowest.

Petrol:

Current Ave. Price: **331**
 Min **150** Max **600**
 Ave. % Change: **-44%**

Improved supply of petrol during the reporting period has reduced the prices significantly. The national average price dropped by 44% from July, but 109% more than the pre-crisis period. Highest price was in Sana'a and lowest in Aden during the reporting period.

Diesel:

Current Ave. Price: **352**
 Min **150** Max **625**
 Ave. % Change: **-51%**

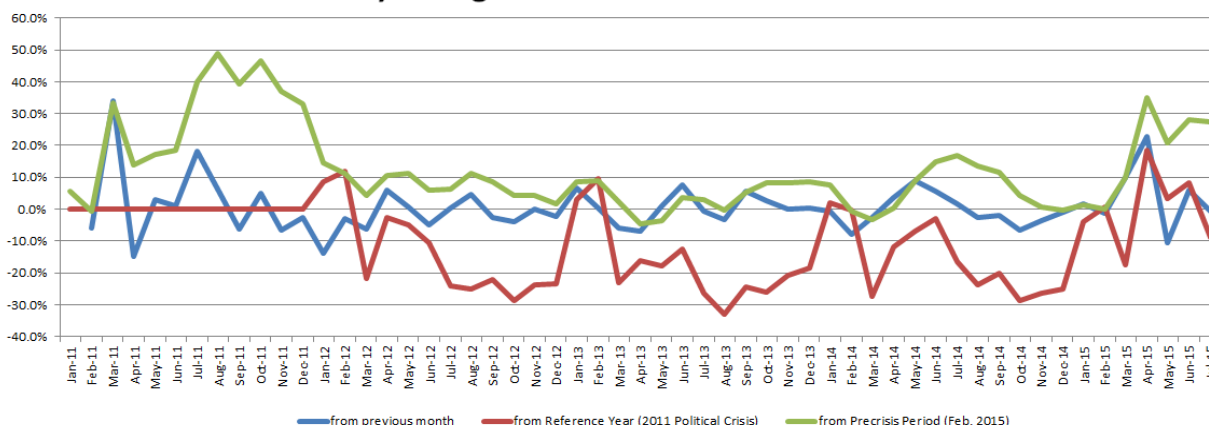
Diesel supply and availability improved during the weeks of reporting. As a result, national average price was 51% lower than last month but 135% more than the pre-crisis period. Prices were highest in Ibb and lowest in Aden.

Availability/Supply

	Wheat Flour	Sugar	Veg. Oil	Red Beans	Onion	Cooking gas	Petrol	Diesel
Abyan	SAV	AV	SAV	AV	AV	SAV	SAV	NA
Addaleh	AV	AV	AV	NA	AV	SAV	AV	SAV
Aden	AV	AV	AV	AV	AV	NA	AV	AV
Al Baidha	SAV	AV	SAV	AV	AV	SAV	SAV	NA
Al Jawf	SAV	AV	SAV	SAV	SAV	SAV	SAV	SAV
Al Mahra	AV	AV	AV	AV	AV	SAV	AV	AV
Al Mahweet	SAV	AV	AV	AV	AV	SAV	SAV	SAV
Amran	AV	AV	AV	AV	AV	SAV	SAV	SAV
Dhamar	AV	AV	AV	AV	AV	SAV	SAV	SAV
Hadramout	AV	AV	AV	AV	AV	SAV	AV	AV
Hajja	AV	AV	AV	AV	AV	SAV	SAV	SAV
Al Hodieda	AV	AV	AV	AV	AV	AV	AV	SAV
Ibb	AV	SAV	AV	AV	AV	SAV	SAV	SAV
Laheg	SAV	SAV	SAV	NA	SAV	SAV	AV	NA
Mareb	AV	AV	AV	AV	AV	SAV	SAV	SAV
Rayma	SAV	SAV	SAV	SAV	AV	SAV	SAV	SAV
Sa'ada	AV	AV	SAV	AV	AV	SAV	SAV	SAV
Sana'a	SAV	AV	AV	AV	AV	AV	SAV	SAV
Sana'a city	AV	AV	AV	AV	AV	SAV	SAV	SAV
Shabwa	SAV	AV	AV	AV	AV	SAV	SAV	SAV
Soqatra	AV	AV	AV	AV	NA	SAV	AV	AV
Taiz	AV	AV	AV	AV	AV	SAV	SAV	SAV

AV Generally Available
 SAV Sporadically Available
 NA Not Available

Monthly Changes on Costs of Partial Food Basket





Yemen Weekly Market Situation Update

Weeks 1 & 2: August 2015

Market Area	Commodity	Current Month Ave. to date	Change of current avg. price compared to:				Direction of Change		
			1 M	Pre-Crisis	2011 (Yr Ave)	Within Month Trend	1 M	Pre-Crisis	2011 (Yr Ave)
Abyan	Wheat flour (kg)	140	-35%	2%	-12%	▼	▼	▼	
	Sugar (kg)	180	-41%	-16%	-36%	▼	▼	▼	
	Veg. Oil (litre)	340	-11%	0%	-23%	▼	▼	▼	
	Red beans (kg)	400	-12%	28%	43%	▼	▲	▲	
	Onion (kg)	320	-11%	47%	102%	▼	▲	▲	
	Petrol (Litre)	325	-52%	105%	113%	▼	▲	▲	
	Diesel (Litre)	325	-54%	117%	119%	▼	▲	▲	
Cooking Gas (Bottle)	2500	-35%	30%	-17%	▼	▼	▼		
Adaleh	Wheat flour (kg)	140	-43%	2%	-12%	▼	▼	▼	
	Sugar (kg)	180	-60%	-16%	-36%	▼	▼	▼	
	Veg. Oil (litre)	190	-60%	-44%	-57%	▼	▼	▼	
	Red beans (kg)	N/A	N/A	N/A	N/A	▼	▼	▼	
	Onion (kg)	250	-31%	15%	58%	▼	▲	▲	
	Petrol (Litre)	225	-79%	42%	48%	▼	▲	▲	
	Diesel (Litre)	390	-49%	160%	163%	▼	▲	▲	
Cooking Gas (Bottle)	5500	-20%	186%	83%	▼	▼	▼		
Aden	Wheat flour (kg)	200	-27%	46%	25%	▼	▲	▲	
	Sugar (kg)	149	-71%	-30%	-47%	▼	▼	▼	
	Veg. Oil (litre)	425	-7%	25%	-4%	▼	▼	▼	
	Red beans (kg)	500	-2%	60%	78%	▼	▲	▲	
	Onion (kg)	300	-25%	38%	89%	▼	▲	▲	
	Petrol (Litre)	150	-83%	-5%	-2%	▼	▲	▲	
	Diesel (Litre)	150	-86%	0%	1%	▼	▲	▲	
Cooking Gas (Bottle)	N/A	N/A	N/A	N/A	▼	▼	▼		
Al Baidha	Wheat flour (kg)	148	-12%	8%	-7%	▼	▼	▼	
	Sugar (kg)	144	-61%	-33%	-49%	▼	▼	▼	
	Veg. Oil (litre)	313	-11%	-8%	-30%	▼	▼	▼	
	Red beans (kg)	350	11%	12%	25%	▼	▲	▲	
	Onion (kg)	250	-3%	15%	58%	▼	▲	▲	
	Petrol (Litre)	400	-33%	153%	163%	▼	▲	▲	
	Diesel (Litre)	350	-66%	133%	136%	▼	▲	▲	
Cooking Gas (Bottle)	4100	-27%	113%	36%	▼	▼	▼		
Al Jawf	Wheat flour (kg)	160	-18%	17%	0%	▼	▼	▼	
	Sugar (kg)	240	-7%	12%	-15%	▼	▼	▼	
	Veg. Oil (litre)	400	-9%	17%	-10%	▼	▼	▼	
	Red beans (kg)	400	-12%	28%	43%	▼	▲	▲	
	Onion (kg)	200	-26%	-8%	26%	▼	▼	▼	
	Petrol (Litre)	N/A	N/A	N/A	N/A	▼	▼	▼	
	Diesel (Litre)	N/A	N/A	N/A	N/A	▼	▼	▼	
Cooking Gas (Bottle)	400	-33%	108%	33%	▼	▼	▼		
Al Mahra	Wheat flour (kg)	164	-4%	20%	3%	▼	▼	▼	
	Sugar (kg)	148	-5%	-31%	-48%	▼	▼	▼	
	Veg. Oil (litre)	310	-4%	-9%	-30%	▼	▼	▼	
	Red beans (kg)	400	-1%	28%	43%	▼	▲	▲	
	Onion (kg)	260	16%	20%	64%	▼	▲	▲	
	Petrol (Litre)	300	-35%	89%	97%	▼	▲	▲	
	Diesel (Litre)	210	-53%	40%	42%	▼	▲	▲	
Cooking Gas (Bottle)	3500	-17%	82%	16%	▼	▼	▼		
Al Mahweet	Wheat flour (kg)	160	-11%	17%	0%	▼	▼	▼	
	Sugar (kg)	160	-18%	-25%	-43%	▼	▼	▼	
	Veg. Oil (litre)	300	-19%	-12%	-32%	▼	▼	▼	
	Red beans (kg)	420	-1%	34%	50%	▼	▲	▲	
	Onion (kg)	200	-2%	-8%	26%	▼	▼	▼	
	Petrol (Litre)	300	-35%	89%	97%	▼	▲	▲	
	Diesel (Litre)	300	-63%	100%	102%	▼	▲	▲	
Cooking Gas (Bottle)	4000	-6%	108%	33%	▼	▼	▼		
Dhamar	Wheat flour (kg)	140	-2%	2%	-12%	▼	▼	▼	
	Sugar (kg)	140	-1%	-35%	-51%	▼	▼	▼	
	Veg. Oil (litre)	310	-16%	-9%	-30%	▼	▼	▼	
	Red beans (kg)	400	9%	28%	43%	▼	▲	▲	
	Onion (kg)	200	3%	-8%	26%	▼	▼	▼	
	Petrol (Litre)	600	4%	279%	294%	▼	▲	▲	
	Diesel (Litre)	430	-38%	186%	190%	▼	▲	▲	
Cooking Gas (Bottle)	4000	-9%	108%	33%	▼	▼	▼		
Hadramout	Wheat flour (kg)	164	-4%	20%	3%	▼	▼	▼	
	Sugar (kg)	150	-4%	-30%	-47%	▼	▼	▼	
	Veg. Oil (litre)	313	-5%	-8%	-30%	▼	▼	▼	
	Red beans (kg)	400	-5%	28%	43%	▼	▲	▲	
	Onion (kg)	250	0%	15%	58%	▼	▲	▲	
	Petrol (Litre)	300	-38%	89%	97%	▼	▲	▲	
	Diesel (Litre)	210	-58%	40%	42%	▼	▲	▲	
Cooking Gas (Bottle)	3500	-19%	82%	16%	▼	▼	▼		
Hajja	Wheat flour (kg)	128	-24%	-6%	-20%	▼	▼	▼	
	Sugar (kg)	200	-14%	-7%	-29%	▼	▼	▼	
	Veg. Oil (litre)	295	-19%	-14%	-33%	▼	▼	▼	
	Red beans (kg)	350	-5%	12%	25%	▼	▲	▲	
	Onion (kg)	200	-9%	-8%	26%	▼	▼	▼	
	Petrol (Litre)	275	-65%	74%	81%	▼	▲	▲	
	Diesel (Litre)	300	-60%	100%	102%	▼	▲	▲	
Cooking Gas (Bottle)	3500	-35%	82%	16%	▼	▼	▼		
Ibb	Wheat flour (kg)	140	-12%	2%	-12%	▼	▼	▼	
	Sugar (kg)	150	-11%	-30%	-47%	▼	▼	▼	
	Veg. Oil (litre)	400	-10%	17%	-10%	▼	▼	▼	
	Red beans (kg)	400	-11%	28%	43%	▼	▲	▲	
	Onion (kg)	150	-29%	-31%	-5%	▼	▼	▼	
	Petrol (Litre)	500	-20%	216%	228%	▼	▲	▲	
	Diesel (Litre)	625	-15%	317%	321%	▼	▲	▲	
Cooking Gas (Bottle)	4000	-33%	108%	33%	▼	▼	▼		
Laheg	Wheat flour (kg)	200	-23%	46%	25%	▼	▲	▲	
	Sugar (kg)	200	-27%	-7%	-29%	▼	▼	▼	
	Veg. Oil (litre)	450	-2%	32%	2%	▼	▼	▼	
	Red beans (kg)	N/A	N/A	N/A	N/A	▼	▼	▼	
	Onion (kg)	300	-31%	38%	89%	▼	▲	▲	
	Petrol (Litre)	200	-47%	26%	31%	▼	▲	▲	
	Diesel (Litre)	N/A	N/A	N/A	N/A	▼	▼	▼	
Cooking Gas (Bottle)	6000	-10%	212%	99%	▼	▼	▼		
Mareb	Wheat flour (kg)	170	-12%	24%	6%	▼	▼	▼	
	Sugar (kg)	190	-10%	-11%	-33%	▼	▼	▼	
	Veg. Oil (litre)	425	20%	25%	-4%	▼	▼	▼	
	Red beans (kg)	500	4%	60%	78%	▼	▲	▲	
	Onion (kg)	400	-9%	84%	152%	▼	▲	▲	
	Petrol (Litre)	175	-75%	11%	15%	▼	▲	▲	
	Diesel (Litre)	300	-59%	100%	102%	▼	▲	▲	
Cooking Gas (Bottle)	4000	-27%	108%	33%	▼	▼	▼		
Sana'a city	Wheat flour (kg)	184	1%	35%	15%	▼	▼	▼	
	Sugar (kg)	200	-24%	-7%	-29%	▼	▼	▼	
	Veg. Oil (litre)	300	-4%	-12%	-32%	▼	▼	▼	
	Red beans (kg)	350	0%	12%	25%	▼	▲	▲	
	Onion (kg)	250	12%	15%	58%	▼	▲	▲	
	Petrol (Litre)	600	118%	279%	294%	▼	▲	▲	
	Diesel (Litre)	350	4%	133%	136%	▼	▲	▲	
Cooking Gas (Bottle)	4000	-11%	108%	33%	▼	▼	▼		
Al Baidha	Wheat flour (kg)	160	-9%	17%	0%	▼	▼	▼	
	Sugar (kg)	166	-14%	-22%	-41%	▼	▼	▼	
	Veg. Oil (litre)	433	-8%	27%	-2%	▼	▼	▼	
	Red beans (kg)	400	-4%	28%	43%	▼	▲	▲	
	Onion (kg)	200	-38%	-8%	26%	▼	▼	▼	
	Petrol (Litre)	225	-59%	42%	48%	▼	▲	▲	
	Diesel (Litre)	300	-58%	100%	102%	▼	▲	▲	
Cooking Gas (Bottle)	4500	-12%	134%	49%	▼	▼	▼		
Shabwa	Wheat flour (kg)	126	-18%	-8%	-21%	▼	▼	▼	
	Sugar (kg)	156	-13%	-27%	-45%	▼	▼	▼	
	Veg. Oil (litre)	275	-15%	-19%	-38%	▼	▼	▼	
	Red beans (kg)	440	5%	40%	57%	▼	▲	▲	
	Onion (kg)	600	147%	176%	278%	▼	▲	▲	
	Petrol (Litre)	150	-45%	-5%	-2%	▼	▲	▲	
	Diesel (Litre)	150	-41%	0%	1%	▼	▲	▲	
Cooking Gas (Bottle)	8000	48%	316%	166%	▼	▲	▲		
Soqatra	Wheat flour (kg)	140	-26%	2%	-12%	▼	▼	▼	
	Sugar (kg)	146	-67%	-32%	-48%	▼	▼	▼	
	Veg. Oil (litre)	425	-9%	25%	-4%	▼	▼	▼	
	Red beans (kg)	500	-7%	60%	78%	▼	▲	▲	
	Onion (kg)	220	-35%	1%	39%	▼	▼	▼	
	Petrol (Litre)	400	-46%	153%	163%	▼	▲	▲	
	Diesel (Litre)	425	-64%	183%	187%	▼	▲	▲	
Cooking Gas (Bottle)	6000	-1%	212%	99%	▼	▼	▼		

▼ Price decrease below normal price fluctuation (+/- 5%) Change from Previous Month
 ▼ Normal Price Fluctuation (+/- 10%) Change from Previous Month (1M) and Pre-Crisis Period
 ▲ Price increase above normal price fluctuation (+/- 15%) Change from Reference Year (2011)

All Prices in YER



Yemen Weekly Market Situation Update

Weeks 1 & 2: August 2015

Commodity	Market Area	% Change from Stated Period			Degree of Change			Commodity	% Change from Stated Period			Degree of Change			Commodity	% Change from Stated Period			Degree of Change									
		Current Month Ave. to date	1 M	Pre-Crisis 2011 (Yr Ave)	Within Month Trend	1 M	Pre-Crisis 2011 (Yr Ave)		Current Month Ave. to date	1 M	Pre-Crisis 2011 (Yr Ave)	Within Month Trend	1 M	Pre-Crisis 2011 (Yr Ave)		Current Month Ave. to date	1 M	Pre-Crisis 2011 (Yr Ave)	Within Month Trend	1 M	Pre-Crisis 2011 (Yr Ave)							
Wheat flour (kg)	Abyan	140	-35%	2%	-12%	▶▶▶	▼	Veg. Oil (litre)	340	-11%	0%	-23%	▶▶▶	▼	Onion (kg)	320	-11%	47%	102%	▶▶▶	▼	Petrol (litre)	325	-52%	105%	113%	▶▶▶	▼
	Addaleh	140	-43%	2%	-12%	▶▶▶	▼		190	-60%	-44%	-57%	▶▶▶	▼		250	-31%	15%	58%	▶▶▶	▼		225	-79%	42%	48%	▶▶▶	▼
	Aden	200	-27%	46%	25%	▶▶▶	▼		425	-7%	25%	-4%	▶▶▶	▼		300	-25%	38%	89%	▶▶▶	▼		150	-83%	-5%	-2%	▶▶▶	▼
	Al Baidha	148	-12%	8%	-7%	▶▶▶	▼		313	-11%	-8%	-30%	▶▶▶	▼		250	-3%	15%	58%	▶▶▶	▼		400	-33%	153%	163%	▶▶▶	▼
	Al Jawf	160	-18%	17%	0%	▶▶▶	▼		400	-9%	17%	-10%	▶▶▶	▼		200	-26%	-8%	26%	▶▶▶	▼		N/A	N/A	N/A	N/A	▶▶▶	▼
	Al Mahra	164	3%	20%	3%	▶▶▶	▼		310	-4%	-9%	-30%	▶▶▶	▼		260	16%	20%	64%	▶▶▶	▼		300	-35%	89%	97%	▶▶▶	▼
	Al Mahweet	160	-11%	17%	0%	▶▶▶	▼		300	-19%	-12%	-32%	▶▶▶	▼		200	-2%	-8%	26%	▶▶▶	▼		300	-35%	89%	97%	▶▶▶	▼
	Amran	120	-21%	-12%	-25%	▶▶▶	▼		300	-16%	-12%	-32%	▶▶▶	▼		100	-49%	-54%	-37%	▶▶▶	▼		250	-65%	58%	64%	▶▶▶	▼
	Dhamar	140	-2%	2%	-12%	▶▶▶	▼		310	-16%	-9%	-30%	▶▶▶	▼		200	3%	-8%	26%	▶▶▶	▼		600	4%	279%	294%	▶▶▶	▼
	Hadramout	164	-4%	20%	3%	▶▶▶	▼		313	-5%	-8%	-30%	▶▶▶	▼		250	0%	15%	58%	▶▶▶	▼		300	-38%	89%	97%	▶▶▶	▼
	Hajja	128	-24%	-6%	-20%	▶▶▶	▼		295	-19%	-14%	-33%	▶▶▶	▼		200	-9%	-8%	26%	▶▶▶	▼		275	-65%	74%	81%	▶▶▶	▼
	Al Hodieda	120	-25%	-12%	-25%	▶▶▶	▼		350	-5%	3%	-21%	▶▶▶	▼		210	2%	-3%	32%	▶▶▶	▼		175	-71%	11%	15%	▶▶▶	▼
	Ibb	140	-12%	2%	-12%	▶▶▶	▼		400	-10%	17%	-10%	▶▶▶	▼		150	-29%	-31%	-5%	▶▶▶	▼		500	-20%	216%	228%	▶▶▶	▼
	Laheg	200	-23%	46%	25%	▶▶▶	▼		450	-2%	32%	2%	▶▶▶	▼		300	-31%	38%	89%	▶▶▶	▼		200	-47%	26%	31%	▶▶▶	▼
	Mareb	170	-12%	24%	6%	▶▶▶	▼		425	20%	25%	-4%	▶▶▶	▼		400	-9%	84%	152%	▶▶▶	▼		175	-75%	11%	15%	▶▶▶	▼
	Rayma	220	-1%	61%	38%	▶▶▶	▼		348	-2%	2%	-22%	▶▶▶	▼		200	-6%	-8%	26%	▶▶▶	▼		500	-31%	216%	228%	▶▶▶	▼
Sa'ada	170	-1%	24%	6%	▶▶▶	▼	340	-16%	0%	-23%	▶▶▶	▼	300	3%	38%	89%	▶▶▶	▼	300	-65%	89%	97%	▶▶▶	▼				
Sana'a	160	-7%	17%	0%	▶▶▶	▼	300	-2%	-12%	-32%	▶▶▶	▼	200	-5%	-8%	26%	▶▶▶	▼	600	118%	279%	294%	▶▶▶	▼				
Sana'a city	184	1%	35%	15%	▶▶▶	▼	300	-4%	-12%	-32%	▶▶▶	▼	250	12%	15%	58%	▶▶▶	▼	600	118%	279%	294%	▶▶▶	▼				
Shabwa	160	-9%	17%	0%	▶▶▶	▼	433	-8%	27%	-2%	▶▶▶	▼	200	-38%	-8%	26%	▶▶▶	▼	225	-59%	42%	48%	▶▶▶	▼				
Soqatra	126	-18%	-8%	-21%	▶▶▶	▼	275	-15%	-19%	-38%	▶▶▶	▼	600	147%	176%	278%	▶▶▶	▼	150	-45%	-5%	-2%	▶▶▶	▼				
Taiz	140	-26%	2%	-12%	▶▶▶	▼	425	-9%	25%	-4%	▶▶▶	▼	220	-35%	1%	39%	▶▶▶	▼	400	-46%	153%	163%	▶▶▶	▼				
Sugar (kg)	Abyan	180	-41%	-16%	-36%	▶▶▶	▼	Red beans (kg)	400	-12%	28%	43%	▶▶▶	▼	Cooking Gas (Bottle)	2500	-35%	30%	-17%	▶▶▶	▼	Diesel (litre)	325	-54%	117%	119%	▶▶▶	▼
	Addaleh	180	-60%	-16%	-36%	▶▶▶	▼		N/A	N/A	N/A	N/A	▶▶▶	▼		5500	-20%	186%	83%	▶▶▶	▼		390	-49%	160%	163%	▶▶▶	▼
	Aden	149	-71%	-30%	-47%	▶▶▶	▼		500	-2%	60%	78%	▶▶▶	▼		N/A	N/A	N/A	N/A	▶▶▶	▼		150	-86%	0%	1%	▶▶▶	▼
	Al Baidha	144	-61%	-33%	-49%	▶▶▶	▼		350	11%	12%	25%	▶▶▶	▼		4100	-27%	113%	36%	▶▶▶	▼		350	-66%	133%	136%	▶▶▶	▼
	Al Jawf	240	-7%	12%	-15%	▶▶▶	▼		400	N/A	28%	43%	▶▶▶	▼		4000	-33%	108%	33%	▶▶▶	▼		N/A	N/A	N/A	N/A	▶▶▶	▼
	Al Mahra	148	-5%	-31%	-48%	▶▶▶	▼		400	-1%	28%	43%	▶▶▶	▼		3500	-17%	82%	16%	▶▶▶	▼		210	-53%	40%	42%	▶▶▶	▼
	Al Mahweet	160	-18%	-25%	-43%	▶▶▶	▼		420	-1%	34%	50%	▶▶▶	▼		4000	-6%	108%	33%	▶▶▶	▼		300	-63%	100%	102%	▶▶▶	▼
	Amran	122	-34%	-43%	-57%	▶▶▶	▼		350	-10%	12%	25%	▶▶▶	▼		2500	-40%	30%	-17%	▶▶▶	▼		250	-62%	67%	69%	▶▶▶	▼
	Dhamar	140	-1%	-35%	-51%	▶▶▶	▼		400	9%	28%	43%	▶▶▶	▼		4000	-9%	108%	33%	▶▶▶	▼		430	-38%	186%	190%	▶▶▶	▼
	Hadramout	150	-4%	-30%	-47%	▶▶▶	▼		400	-5%	28%	43%	▶▶▶	▼		3500	-19%	82%	16%	▶▶▶	▼		210	-58%	40%	42%	▶▶▶	▼
	Hajja	200	-14%	-7%	-29%	▶▶▶	▼		350	-5%	12%	25%	▶▶▶	▼		3500	-35%	82%	16%	▶▶▶	▼		300	-60%	100%	102%	▶▶▶	▼
	Al Hodieda	200	-28%	-7%	-29%	▶▶▶	▼		330	-16%	5%	18%	▶▶▶	▼		2000	-61%	4%	-34%	▶▶▶	▼		600	-14%	300%	305%	▶▶▶	▼
	Ibb	150	-11%	-30%	-47%	▶▶▶	▼		400	-11%	28%	43%	▶▶▶	▼		4000	-33%	108%	33%	▶▶▶	▼		625	-15%	317%	321%	▶▶▶	▼
	Laheg	200	-27%	-7%	-29%	▶▶▶	▼		N/A	N/A	N/A	N/A	▶▶▶	▼		6000	-10%	212%	99%	▶▶▶	▼		N/A	N/A	N/A	N/A	▶▶▶	▼
	Mareb	190	-10%	-11%	-33%	▶▶▶	▼		500	4%	60%	78%	▶▶▶	▼		4000	-27%	108%	33%	▶▶▶	▼		300	-59%	100%	102%	▶▶▶	▼
	Rayma	240	-18%	12%	-15%	▶▶▶	▼		320	-4%	2%	14%	▶▶▶	▼		4300	-4%	123%	43%	▶▶▶	▼		600	-40%	300%	305%	▶▶▶	▼
Sa'ada	160	-27%	-25%	-43%	▶▶▶	▼	380	N/A	21%	35%	▶▶▶	▼	2800	-50%	45%	-7%	▶▶▶	▼	425	-55%	183%	187%	▶▶▶	▼				
Sana'a	196	-25%	-8%	-31%	▶▶▶	▼	350	10%	12%	25%	▶▶▶	▼	3000	-30%	56%	0%	▶▶▶	▼	350	8%	133%	136%	▶▶▶	▼				
Sana'a city	200	-24%	-7%	-29%	▶▶▶	▼	350	0%	12%	25%	▶▶▶	▼	4000	-11%	108%	33%	▶▶▶	▼	350	4%	133%	136%	▶▶▶	▼				
Shabwa	166	-14%	-22%	-41%	▶▶▶	▼	400	-4%	28%	43%	▶▶▶	▼	4500	-12%	134%	49%	▶▶▶	▼	300	-58%	100%	102%	▶▶▶	▼				
Soqatra	156	-13%	-27%	-45%	▶▶▶	▼	440	5%	40%	57%	▶▶▶	▼	8000	48%	316%	166%	▶▶▶	▼	150	-41%	0%	1%	▶▶▶	▼				
Taiz	146	-67%	-32%	-48%	▶▶▶	▼	500	-7%	60%	78%	▶▶▶	▼	6000	-1%	212%	99%	▶▶▶	▼	425	-64%	183%	187%	▶▶▶	▼				

▼ Price decrease below normal price fluctuation
 ▶ Normal Price Fluctuation
 ▲ Price increase above normal price fluctuation

Lowest Price
 Highest Price
 N/A Not Available

All Prices in YER

(+/- 5%)
 (+/- 10%)
 (+/- 15%)

Change within month and from Previous Month
 Change from Previous Month (1M) and Pre-Crisis Period
 Change from Reference Year (2011)