



Yemen Market Situation Update

September 2015

SUMMARY

- During the reporting period, availability of essential food commodities and fuel remained to be scarce in several governorates of Yemen where fresh wave of conflicts and widespread airstrikes were intensified following the killing of over 60 coalition forces in Mareb. The worst shortages of commodities were reported from highly affected governorates such as Sana'a, Taiz, Hodieda, Mareb, Hajja, Al Jawf, Sa'ada, Lahej, Al Bayda and Abyan.
- The scarcity of commodities in the markets of those conflict affected areas has led to remarkable escalation of prices of all commodities. During the reporting period, the national average price of fuel rose by nearly 250% from the crisis period, while in the recently most affected governorates such as Sana'a and Taiz the prices have increased by about 400%. Similarly, the national average price of wheat flour in September is 45% (in Taiz over 100%) higher than the pre-crisis levels.
- The national monthly average cost of partial food basket in September was over 30% more than the pre-crisis level (rose by 55% in Hodieda and 50% in Aden), adding more pressure on the weakened purchasing power of the vulnerable population who have already been struggling with eroded coping strategies.
- The high level of food insecurity may deteriorate further, particularly in those governorates where scarcity of commodities have been worsened and prices have escalated dramatically as a result of the intensified conflicts and airstrikes. Taiz continued to be the most affected, while situation in Sana'a deteriorating rapidly.

Summary of retail prices of key commodities (in YER) with Ave. % Change from Pre-Crisis Period

Wheat Flour

Current Ave. Price: **199**
 Min **150** Max **280**
Ave. % Change: 45%

Scarcity of wheat flour was reported from most of the governorates in the country, further deterioration was observed in areas where conflicts escalated. The national average prices rose by 23% from last month, and 45% higher than the pre-crisis period. The highest price was recorded in Taiz.

Onion

Current Ave. Price: **283**
 Min **120** Max **450**
Ave. % Change: 31%

Supply of onion was poor in most affected governorates. National average prices of onion increased by 9% compared to last month, and 31% more than the pre-crisis period. Price was highest in Mareb and lowest in Ibb.

Red Beans

Current Ave. Price: **533**
 Min **300** Max **700**
Ave. % Change: 70%

Availability of Red beans was poor in several governorates affected by the recently escalated conflict. The national price rose by 27% from August and 70% higher than the pre-crisis period. Highest prices observed in Taiz.

Vegetable Oil

Current Ave. Price: **483**
 Min **300** Max **675**
Ave. % Change: 42%

During the reporting period, vegetable oil was scarcely available in many governorates where conflicts have been intensified. As a result, the average national price of veg. oil increased by 20% from the previous month and 42% higher than pre-crisis period. Taiz reported the highest price.

Sugar

Current Ave. Price: **237**
 Min **140** Max **320**
Ave. % Change: 11%

Availability of sugar was also deteriorated in areas impacted by the recent conflict. Consequently, the national average price increased by 15% from last month and 11% from pre-crisis. Highest price was in Taiz.

Cooking Gas

Current Ave. Price: **6583**
 Min **2400** Max **12000**
Ave. % Change: 242%

Scarcity of cooking gas in most governorates has persisted throughout the country. As a result, the average price rose by 72% from last month, and 242% higher than the pre-crisis period. Sana'a had the highest price of gas.

Petrol:

Current Ave. Price: **533**
 Min **250** Max **800**
Ave. % Change: 237%

Further deterioration in the shortage of petrol during the reporting period has resulted in the rise of prices by an average 38% compared to August. The national monthly average price in September was 237% more than the pre-crisis period. Highest price was recorded in Taiz which is suffering the most from the continued conflict.

Diesel:

Current Ave. Price: **536**
 Min **275** Max **900**
Ave. % Change: 257%

Persistently poor supply of diesel during the reporting period has led to high price increase. The national monthly average price of diesel in September rose by 35% from previous month and was 257% more than the pre-crisis period. Prices in Taiz were the highest.

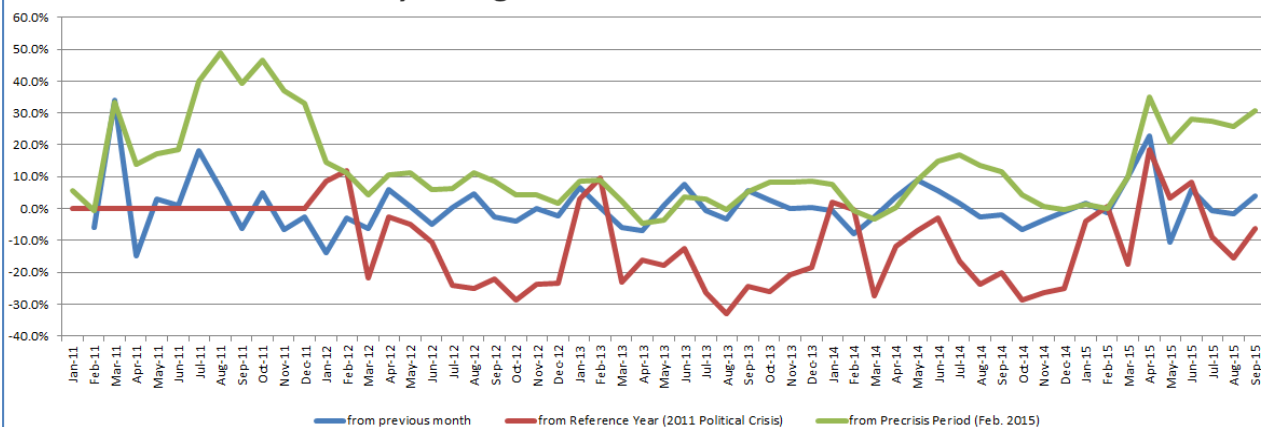
Availability/Supply

	Wheat Flour	Sugar	Veg. Oil	Red Beans	Onion	Cooking gas	Petrol	Diesel
Abyan	SAV	SAV	SAV	SAV	AV	SAV	SAV	SAV
Addaleh	AV	AV	AV	SAV	AV	SAV	SAV	SAV
Aden	AV	AV	AV	AV	AV	SAV	SAV	SAV
Al Baidha	SAV	SAV	SAV	SAV	AV	SAV	SAV	SAV
Al Jawf	SAV	AV	SAV	SAV	SAV	SAV	SAV	SAV
Al Mahra	AV	AV	AV	AV	AV	AV	AV	AV
Al Mahweet	AV	AV	AV	AV	AV	SAV	SAV	SAV
Amran	SAV	SAV	SAV	AV	AV	SAV	SAV	SAV
Dhamar	SAV	AV	SAV	SAV	SAV	SAV	SAV	SAV
Hadramout	AV	AV	AV	AV	AV	AV	AV	AV
Hajja	SAV	SAV	SAV	SAV	SAV	SAV	SAV	SAV
Al Hodieda	SAV	SAV	SAV	SAV	SAV	SAV	SAV	SAV
Ibb	AV	SAV	AV	AV	AV	SAV	SAV	SAV
Laheg	SAV	SAV	SAV	SAV	SAV	SAV	SAV	SAV
Mareb	SAV	SAV	SAV	SAV	SAV	SAV	SAV	SAV
Rayma	SAV	SAV	SAV	SAV	AV	SAV	SAV	SAV
Sa'ada	SAV	SAV	SAV	SAV	SAV	SAV	SAV	SAV
Sana'a	SAV	SAV	SAV	AV	AV	SAV	SAV	SAV
Sana'a city	SAV	SAV	SAV	AV	SAV	SAV	SAV	SAV
Shabwa	SAV	SAV	SAV	AV	AV	SAV	SAV	SAV
Soqatra	AV	AV	AV	AV	AV	SAV	SAV	SAV
Taiz	SAV	SAV	SAV	SAV	SAV	SAV	SAV	SAV

AV Generally Available
 SAV Sporadically Available
 NA Not Available

Refer the last page for more details on governorate level changes of prices compared to pre-crisis period, the previous month, and the 2011 crisis period.

Monthly Changes on Costs of Partial Food Basket





Yemen Market Situation Update

September 2015

Market Area	Commodity	Current Month Ave. to date	Change of current avg. price compared to:				Direction of Change		
			1 M	Pre-Crisis	2011 (Yr Ave)	Within Month Trend	1 M	Pre-Crisis	2011 (Yr Ave)
Abyan	Wheat flour (kg)	200	43%	46%	25%	▲	▲	▲	▲
	Sugar (kg)	200	3%	-7%	-29%	▲	▲	▲	▲
	Veg. Oil (litre)	325	-2%	-5%	-27%	▲	▲	▲	▲
	Red beans (kg)	500	20%	60%	78%	▲	▲	▲	▲
	Onion (kg)	300	-2%	38%	89%	▲	▲	▲	▲
	Petrol (Litre)	325	5%	105%	113%	▲	▲	▲	▲
	Diesel (Litre)	300	16%	100%	102%	▲	▲	▲	▲
	Cooking Gas (Bottle)	5500	74%	186%	83%	▲	▲	▲	▲
Aden	Wheat flour (kg)	200	13%	46%	25%	▲	▲	▲	▲
	Sugar (kg)	300	20%	40%	6%	▲	▲	▲	▲
	Veg. Oil (litre)	500	18%	47%	13%	▲	▲	▲	▲
	Red beans (kg)	550	14%	76%	96%	▲	▲	▲	▲
	Onion (kg)	300	0%	38%	89%	▲	▲	▲	▲
	Petrol (Litre)	350	133%	121%	130%	▲	▲	▲	▲
	Diesel (Litre)	350	121%	133%	136%	▲	▲	▲	▲
	Cooking Gas (Bottle)	5000	11%	160%	66%	▲	▲	▲	▲
Al Baidha	Wheat flour (kg)	180	21%	32%	13%	▲	▲	▲	▲
	Sugar (kg)	180	15%	-16%	-36%	▲	▲	▲	▲
	Veg. Oil (litre)	350	4%	3%	-21%	▲	▲	▲	▲
	Red beans (kg)	400	9%	28%	43%	▲	▲	▲	▲
	Onion (kg)	250	0%	15%	58%	▲	▲	▲	▲
	Petrol (Litre)	450	4%	184%	195%	▲	▲	▲	▲
	Diesel (Litre)	450	17%	200%	203%	▲	▲	▲	▲
	Cooking Gas (Bottle)	5000	10%	160%	66%	▲	▲	▲	▲
Al Jawf	Wheat flour (kg)	200	15%	46%	25%	▲	▲	▲	▲
	Sugar (kg)	220	-1%	3%	-22%	▲	▲	▲	▲
	Veg. Oil (litre)	450	10%	32%	2%	▲	▲	▲	▲
	Red beans (kg)	500	7%	60%	78%	▲	▲	▲	▲
	Onion (kg)	200	9%	-8%	26%	▲	▲	▲	▲
	Petrol (Litre)	500	11%	216%	228%	▲	▲	▲	▲
	Diesel (Litre)	500	0%	233%	237%	▲	▲	▲	▲
	Cooking Gas (Bottle)	6000	14%	212%	99%	▲	▲	▲	▲
Al Mahra	Wheat flour (kg)	150	3%	10%	-6%	▲	▲	▲	▲
	Sugar (kg)	140	-4%	-35%	-51%	▲	▲	▲	▲
	Veg. Oil (litre)	300	-2%	-12%	-32%	▲	▲	▲	▲
	Red beans (kg)	500	7%	60%	78%	▲	▲	▲	▲
	Onion (kg)	250	-1%	15%	58%	▲	▲	▲	▲
	Petrol (Litre)	250	-17%	58%	64%	▲	▲	▲	▲
	Diesel (Litre)	300	49%	100%	102%	▲	▲	▲	▲
	Cooking Gas (Bottle)	2400	-4%	25%	-20%	▲	▲	▲	▲
Al Mahweet	Wheat flour (kg)	180	32%	32%	13%	▲	▲	▲	▲
	Sugar (kg)	147	-6%	-32%	-48%	▲	▲	▲	▲
	Veg. Oil (litre)	350	-9%	3%	-21%	▲	▲	▲	▲
	Red beans (kg)	300	-20%	-4%	7%	▲	▲	▲	▲
	Onion (kg)	200	-25%	-8%	26%	▲	▲	▲	▲
	Petrol (Litre)	400	9%	153%	163%	▲	▲	▲	▲
	Diesel (Litre)	400	9%	167%	170%	▲	▲	▲	▲
	Cooking Gas (Bottle)	3500	5%	82%	16%	▲	▲	▲	▲
Amran	Wheat flour (kg)	190	45%	39%	19%	▲	▲	▲	▲
	Sugar (kg)	200	39%	-7%	-29%	▲	▲	▲	▲
	Veg. Oil (litre)	325	4%	-5%	-27%	▲	▲	▲	▲
	Red beans (kg)	400	14%	28%	43%	▲	▲	▲	▲
	Onion (kg)	200	33%	-8%	26%	▲	▲	▲	▲
	Petrol (Litre)	450	29%	184%	195%	▲	▲	▲	▲
	Diesel (Litre)	365	11%	143%	146%	▲	▲	▲	▲
	Cooking Gas (Bottle)	4500	50%	134%	49%	▲	▲	▲	▲
Dhamar	Wheat flour (kg)	180	26%	32%	13%	▲	▲	▲	▲
	Sugar (kg)	150	3%	-30%	-47%	▲	▲	▲	▲
	Veg. Oil (litre)	350	8%	3%	-21%	▲	▲	▲	▲
	Red beans (kg)	300	-13%	-4%	7%	▲	▲	▲	▲
	Onion (kg)	250	15%	15%	58%	▲	▲	▲	▲
	Petrol (Litre)	450	2%	184%	195%	▲	▲	▲	▲
	Diesel (Litre)	375	0%	150%	153%	▲	▲	▲	▲
	Cooking Gas (Bottle)	5500	38%	186%	83%	▲	▲	▲	▲
Hadramout	Wheat flour (kg)	170	16%	24%	6%	▲	▲	▲	▲
	Sugar (kg)	142	-4%	-34%	-50%	▲	▲	▲	▲
	Veg. Oil (litre)	303	-2%	-11%	-32%	▲	▲	▲	▲
	Red beans (kg)	500	7%	60%	78%	▲	▲	▲	▲
	Onion (kg)	250	0%	15%	58%	▲	▲	▲	▲
	Petrol (Litre)	250	-17%	58%	64%	▲	▲	▲	▲
	Diesel (Litre)	275	32%	83%	85%	▲	▲	▲	▲
	Cooking Gas (Bottle)	2500	0%	30%	-17%	▲	▲	▲	▲
Hajja	Wheat flour (kg)	194	33%	42%	21%	▲	▲	▲	▲
	Sugar (kg)	240	10%	12%	-15%	▲	▲	▲	▲
	Veg. Oil (litre)	550	49%	61%	24%	▲	▲	▲	▲
	Red beans (kg)	600	44%	91%	114%	▲	▲	▲	▲
	Onion (kg)	200	0%	-8%	26%	▲	▲	▲	▲
	Petrol (Litre)	550	29%	247%	261%	▲	▲	▲	▲
	Diesel (Litre)	600	38%	300%	305%	▲	▲	▲	▲
	Cooking Gas (Bottle)	6000	64%	212%	99%	▲	▲	▲	▲
Al Hodieda	Wheat flour (kg)	240	38%	75%	50%	▲	▲	▲	▲
	Sugar (kg)	240	7%	12%	-15%	▲	▲	▲	▲
	Veg. Oil (litre)	600	29%	76%	35%	▲	▲	▲	▲
	Red beans (kg)	600	55%	91%	114%	▲	▲	▲	▲
	Onion (kg)	350	30%	61%	121%	▲	▲	▲	▲
	Petrol (Litre)	700	18%	342%	360%	▲	▲	▲	▲
	Diesel (Litre)	700	31%	367%	372%	▲	▲	▲	▲
	Cooking Gas (Bottle)	7000	100%	264%	132%	▲	▲	▲	▲
Ibb	Wheat flour (kg)	194	39%	42%	21%	▲	▲	▲	▲
	Sugar (kg)	190	12%	-11%	-33%	▲	▲	▲	▲
	Veg. Oil (litre)	400	0%	17%	-10%	▲	▲	▲	▲
	Red beans (kg)	400	0%	28%	43%	▲	▲	▲	▲
	Onion (kg)	120	-8%	-45%	-24%	▲	▲	▲	▲
	Petrol (Litre)	500	-12%	216%	228%	▲	▲	▲	▲
	Diesel (Litre)	600	-6%	300%	305%	▲	▲	▲	▲
	Cooking Gas (Bottle)	5400	30%	181%	79%	▲	▲	▲	▲
Laheg	Wheat flour (kg)	210	6%	54%	31%	▲	▲	▲	▲
	Sugar (kg)	198	-1%	-8%	-30%	▲	▲	▲	▲
	Veg. Oil (litre)	475	4%	39%	7%	▲	▲	▲	▲
	Red beans (kg)	600	9%	91%	114%	▲	▲	▲	▲
	Onion (kg)	350	11%	61%	121%	▲	▲	▲	▲
	Petrol (Litre)	325	86%	105%	113%	▲	▲	▲	▲
	Diesel (Litre)	275	29%	83%	85%	▲	▲	▲	▲
	Cooking Gas (Bottle)	6500	15%	238%	116%	▲	▲	▲	▲
Mareb	Wheat flour (kg)	200	15%	46%	25%	▲	▲	▲	▲
	Sugar (kg)	220	6%	3%	-22%	▲	▲	▲	▲
	Veg. Oil (litre)	500	25%	47%	13%	▲	▲	▲	▲
	Red beans (kg)	600	20%	91%	114%	▲	▲	▲	▲
	Onion (kg)	450	8%	107%	184%	▲	▲	▲	▲
	Petrol (Litre)	450	25%	184%	195%	▲	▲	▲	▲
	Diesel (Litre)	500	15%	233%	237%	▲	▲	▲	▲
	Cooking Gas (Bottle)	5000	20%	160%	66%	▲	▲	▲	▲
Sana'a city	Wheat flour (kg)	180	-1%	32%	13%	▲	▲	▲	▲
	Sugar (kg)	190	-2%	-11%	-33%	▲	▲	▲	▲
	Veg. Oil (litre)	325	5%	-5%	-27%	▲	▲	▲	▲
	Red beans (kg)	450	13%	44%	60%	▲	▲	▲	▲
	Onion (kg)	250	0%	15%	58%	▲	▲	▲	▲
	Petrol (Litre)	650	39%	311%	327%	▲	▲	▲	▲
	Diesel (Litre)	600	33%	300%	305%	▲	▲	▲	▲
	Cooking Gas (Bottle)	###	157%	523%	298%	▲	▲	▲	▲
Sa'ada	Wheat flour (kg)	190	18%	39%	19%	▲	▲	▲	▲
	Sugar (kg)	250	15%	17%	-12%	▲	▲	▲	▲
	Veg. Oil (litre)	600	13%	76%	35%	▲	▲	▲	▲
	Red beans (kg)	600	26%	91%	114%	▲	▲	▲	▲
	Onion (kg)	400	4%	84%	152%	▲	▲	▲	▲
	Petrol (Litre)	500	46%	216%	228%	▲	▲	▲	▲
	Diesel (Litre)	600	26%	300%	305%	▲	▲	▲	▲
	Cooking Gas (Bottle)	5000	39%	160%	66%	▲	▲	▲	▲
Sana'a	Wheat flour (kg)	180	10%	32%	13%	▲	▲	▲	▲
	Sugar (kg)	190	1%	-11%	-33%	▲	▲	▲	▲
	Veg. Oil (litre)	325	5%	-5%	-27%	▲	▲	▲	▲
	Red beans (kg)	400	4%	28%	43%	▲	▲	▲	▲
	Onion (kg)	250	15%	15%	58%	▲	▲	▲	▲
	Petrol (Litre)	600	29%	279%	294%	▲	▲	▲	▲
	Diesel (Litre)	500	11%	233%	237%	▲	▲	▲	▲
	Cooking Gas (Bottle)	###	176%	497%	282%	▲	▲	▲	▲
Shabwa	Wheat flour (kg)	160	1%	17%	0%	▲	▲	▲	▲
	Sugar (kg)	156	-7%	-27%	-45%	▲	▲	▲	▲
	Veg. Oil (litre)	421	0%	23%	-5%	▲	▲	▲	▲
	Red beans (kg)	500	-9%	60%	78%	▲	▲	▲	▲
	Onion (kg)	250	7%	15%	58%	▲	▲	▲	▲
	Petrol (Litre)	275	22%	74%	81%	▲	▲	▲	▲
	Diesel (Litre)	300	0%	100%	102%	▲	▲	▲	▲
	Cooking Gas (Bottle)	3500	4%	82%	16%	▲	▲	▲	▲
Soqatra	Wheat flour (kg)	170	35%	24%	6%	▲	▲	▲	▲
	Sugar (kg)	156	0%	-27%	-45%	▲	▲	▲	▲
	Veg. Oil (litre)	400	45%	17%	-10%	▲	▲	▲	▲
	Red beans (kg)	500	4%	60%	78%	▲	▲	▲	▲
	Onion (kg)	250	7%	15%	58%	▲	▲	▲	▲



Yemen Market Situation Update

September 2015

Commodity	Market Area	% Change from Stated Period				Degree of Change				Commodity	% Change from Stated Period				Degree of Change				Commodity	% Change from Stated Period				Degree of Change												
		Current Month Ave. to date	1 M	Pre-Crisis 2011 (Yr Ave)	2011 (Yr Ave)	Within Month Trend	1 M	Pre-Crisis 2011 (Yr Ave)	2011 (Yr Ave)		Current Month Ave. to date	1 M	Pre-Crisis 2011 (Yr Ave)	2011 (Yr Ave)	Within Month Trend	1 M	Pre-Crisis 2011 (Yr Ave)	2011 (Yr Ave)		Current Month Ave. to date	1 M	Pre-Crisis 2011 (Yr Ave)	2011 (Yr Ave)	Within Month Trend	1 M	Pre-Crisis 2011 (Yr Ave)	2011 (Yr Ave)									
Wheat flour (kg)	Abyan	200	43%	46%	25%	▲	▲	▲	▲	Veg. Oil (litre)	325	-2%	-5%	-27%	▲	▲	▲	▲	Onion (kg)	300	-2%	38%	89%	▲	▲	▲	▲	Petrol (Litre)	325	5%	105%	113%	▲	▲	▲	▲
	Addaleh	204	30%	49%	28%	▲	▲	▲	▲		525	38%	54%	18%	▲	▲	▲	▲		250	-6%	15%	58%	▲	▲	▲	▲		350	21%	121%	130%	▲	▲	▲	▲
	Aden	200	13%	46%	25%	▲	▲	▲	▲		500	18%	47%	13%	▲	▲	▲	▲		300	0%	38%	89%	▲	▲	▲	▲		350	133%	121%	130%	▲	▲	▲	▲
	Al Baidha	180	21%	32%	13%	▲	▲	▲	▲		350	4%	3%	-21%	▲	▲	▲	▲		250	0%	15%	58%	▲	▲	▲	▲		450	4%	184%	195%	▲	▲	▲	▲
	Al Jawf	200	15%	46%	25%	▲	▲	▲	▲		450	10%	32%	2%	▲	▲	▲	▲		200	9%	-8%	26%	▲	▲	▲	▲		500	11%	216%	228%	▲	▲	▲	▲
	Al Mahra	150	3%	10%	-6%	▲	▲	▲	▲		300	-2%	-12%	-32%	▲	▲	▲	▲		250	-1%	15%	58%	▲	▲	▲	▲		250	-17%	58%	64%	▲	▲	▲	▲
	Al Mahweet	180	32%	32%	13%	▲	▲	▲	▲		350	-9%	3%	-21%	▲	▲	▲	▲		200	-25%	-8%	26%	▲	▲	▲	▲		400	9%	153%	163%	▲	▲	▲	▲
	Amran	190	45%	39%	19%	▲	▲	▲	▲		325	4%	-5%	-27%	▲	▲	▲	▲		200	33%	-8%	26%	▲	▲	▲	▲		450	29%	184%	195%	▲	▲	▲	▲
	Dhamar	180	26%	32%	13%	▲	▲	▲	▲		350	8%	3%	-21%	▲	▲	▲	▲		250	15%	15%	58%	▲	▲	▲	▲		450	2%	184%	195%	▲	▲	▲	▲
	Hadramout	170	16%	24%	6%	▲	▲	▲	▲		303	-2%	-11%	-32%	▲	▲	▲	▲		250	0%	15%	58%	▲	▲	▲	▲		250	-17%	58%	64%	▲	▲	▲	▲
	Hajja	194	33%	42%	21%	▲	▲	▲	▲		550	49%	61%	24%	▲	▲	▲	▲		200	0%	-8%	26%	▲	▲	▲	▲		550	29%	247%	261%	▲	▲	▲	▲
	Al Hodieda	240	38%	75%	50%	▲	▲	▲	▲		600	29%	76%	35%	▲	▲	▲	▲		350	30%	61%	121%	▲	▲	▲	▲		700	18%	342%	360%	▲	▲	▲	▲
	Ibb	194	39%	42%	21%	▲	▲	▲	▲		400	0%	17%	-10%	▲	▲	▲	▲		120	-8%	-45%	-24%	▲	▲	▲	▲		500	-12%	216%	228%	▲	▲	▲	▲
	Laheg	210	6%	54%	31%	▲	▲	▲	▲		475	4%	39%	7%	▲	▲	▲	▲		350	11%	61%	121%	▲	▲	▲	▲		325	86%	105%	113%	▲	▲	▲	▲
	Mareb	200	15%	46%	25%	▲	▲	▲	▲		500	25%	47%	13%	▲	▲	▲	▲		450	8%	107%	184%	▲	▲	▲	▲		450	25%	184%	195%	▲	▲	▲	▲
	Rayma	196	7%	43%	23%	▲	▲	▲	▲		400	9%	17%	-10%	▲	▲	▲	▲		250	15%	15%	58%	▲	▲	▲	▲		600	54%	279%	294%	▲	▲	▲	▲
	Sa'ada	190	18%	39%	19%	▲	▲	▲	▲		600	13%	76%	35%	▲	▲	▲	▲		400	4%	84%	152%	▲	▲	▲	▲		500	46%	216%	228%	▲	▲	▲	▲
Sana'a	180	10%	32%	13%	▲	▲	▲	▲	325	5%	-5%	-27%	▲	▲	▲	▲	250	15%	15%	58%	▲	▲	▲	▲	600	29%	279%	294%	▲	▲	▲	▲				
Sana'a city	180	-1%	32%	13%	▲	▲	▲	▲	325	5%	-5%	-27%	▲	▲	▲	▲	250	0%	15%	58%	▲	▲	▲	▲	650	39%	311%	327%	▲	▲	▲	▲				
Shabwa	160	1%	17%	0%	▲	▲	▲	▲	421	0%	23%	-5%	▲	▲	▲	▲	250	7%	15%	58%	▲	▲	▲	▲	275	22%	74%	81%	▲	▲	▲	▲				
Soqatra	170	35%	24%	6%	▲	▲	▲	▲	400	45%	17%	-10%	▲	▲	▲	▲	250	7%	15%	58%	▲	▲	▲	▲	300	100%	89%	97%	▲	▲	▲	▲				
Taiz	280	35%	105%	75%	▲	▲	▲	▲	675	35%	98%	52%	▲	▲	▲	▲	400	46%	84%	152%	▲	▲	▲	▲	800	78%	405%	425%	▲	▲	▲	▲				
Sugar (kg)	Abyan	200	3%	-7%	-29%	▲	▲	▲	▲	Red beans (kg)	500	20%	60%	78%	▲	▲	▲	▲	Cooking Gas (Bottle)	5500	74%	186%	83%	▲	▲	▲	▲	Diesel (Litre)	300	16%	100%	102%	▲	▲	▲	▲
	Addaleh	196	0%	-8%	-31%	▲	▲	▲	▲		550	22%	76%	96%	▲	▲	▲	▲		5400	8%	181%	79%	▲	▲	▲	▲		450	7%	200%	203%	▲	▲	▲	▲
	Aden	300	20%	40%	6%	▲	▲	▲	▲		550	14%	76%	96%	▲	▲	▲	▲		5000	11%	160%	66%	▲	▲	▲	▲		350	121%	133%	136%	▲	▲	▲	▲
	Al Baidha	180	15%	-16%	-36%	▲	▲	▲	▲		400	9%	28%	43%	▲	▲	▲	▲		5000	10%	160%	66%	▲	▲	▲	▲		450	17%	200%	203%	▲	▲	▲	▲
	Al Jawf	220	-1%	3%	-22%	▲	▲	▲	▲		500	7%	60%	78%	▲	▲	▲	▲		6000	14%	212%	99%	▲	▲	▲	▲		500	0%	233%	237%	▲	▲	▲	▲
	Al Mahra	140	-4%	-35%	-51%	▲	▲	▲	▲		500	7%	60%	78%	▲	▲	▲	▲		2400	-4%	25%	-20%	▲	▲	▲	▲		300	49%	100%	102%	▲	▲	▲	▲
	Al Mahweet	147	-6%	-32%	-48%	▲	▲	▲	▲		300	-20%	-4%	7%	▲	▲	▲	▲		3500	5%	82%	16%	▲	▲	▲	▲		400	9%	167%	170%	▲	▲	▲	▲
	Amran	200	39%	-7%	-29%	▲	▲	▲	▲		400	14%	28%	43%	▲	▲	▲	▲		4500	50%	134%	49%	▲	▲	▲	▲		365	11%	143%	146%	▲	▲	▲	▲
	Dhamar	150	3%	-30%	-47%	▲	▲	▲	▲		300	-13%	-4%	7%	▲	▲	▲	▲		5500	38%	186%	83%	▲	▲	▲	▲		375	0%	150%	153%	▲	▲	▲	▲
	Hadramout	142	-4%	-34%	-50%	▲	▲	▲	▲		500	7%	60%	78%	▲	▲	▲	▲		2500	0%	30%	-17%	▲	▲	▲	▲		275	32%	83%	85%	▲	▲	▲	▲
	Hajja	240	10%	12%	-15%	▲	▲	▲	▲		600	44%	91%	114%	▲	▲	▲	▲		6000	64%	212%	99%	▲	▲	▲	▲		600	38%	300%	305%	▲	▲	▲	▲
	Al Hodieda	240	7%	12%	-15%	▲	▲	▲	▲		600	55%	91%	114%	▲	▲	▲	▲		7000	100%	264%	132%	▲	▲	▲	▲		700	31%	367%	372%	▲	▲	▲	▲
	Ibb	190	12%	-11%	-33%	▲	▲	▲	▲		400	0%	28%	43%	▲	▲	▲	▲		5400	30%	181%	79%	▲	▲	▲	▲		600	-6%	300%	305%	▲	▲	▲	▲
	Laheg	198	-1%	-8%	-30%	▲	▲	▲	▲		600	9%	91%	114%	▲	▲	▲	▲		6500	15%	238%	116%	▲	▲	▲	▲		275	29%	83%	85%	▲	▲	▲	▲
	Mareb	220	6%	3%	-22%	▲	▲	▲	▲		600	20%	91%	114%	▲	▲	▲	▲		5000	20%	160%	66%	▲	▲	▲	▲		500	15%	233%	237%	▲	▲	▲	▲
	Rayma	200	-6%	-7%	-29%	▲	▲	▲	▲		400	9%	28%	43%	▲	▲	▲	▲		5500	26%	186%	83%	▲	▲	▲	▲		450	-13%	200%	203%	▲	▲	▲	▲
	Sa'ada	250	15%	17%	-12%	▲	▲	▲	▲		600	26%	91%	114%	▲	▲	▲	▲		5000	39%	160%	66%	▲	▲	▲	▲		600	26%	300%	305%	▲	▲	▲	▲
Sana'a	190	1%	-11%	-33%	▲	▲	▲	▲	400	4%	28%	43%	▲	▲	▲	▲	11500	176%	497%	282%	▲	▲	▲	▲	500	11%	233%	237%	▲	▲	▲	▲				
Sana'a city	190	-2%	-11%	-33%	▲	▲	▲	▲	450	13%	44%	60%	▲	▲	▲	▲	12000	157%	523%	298%	▲	▲	▲	▲	600	33%	300%	305%	▲	▲	▲	▲				
Shabwa	156	-7%	-27%	-45%	▲	▲	▲	▲	500	-9%	60%	78%	▲	▲	▲	▲	3500	4%	82%	16%	▲	▲	▲	▲	300	0%	100%	102%	▲	▲	▲	▲				
Soqatra	156	0%	-27%	-45%	▲	▲	▲	▲	500	4%	60%	78%	▲	▲	▲	▲	4500	13%	134%	49%	▲	▲	▲	▲	300	100%	100%	102%	▲	▲	▲	▲				
Taiz	320	28%	49%	13%	▲	▲	▲	▲	700	31%	123%	149%	▲	▲	▲	▲	8000	33%	316%	166%	▲	▲	▲	▲	900	10%	500%	507%	▲	▲	▲	▲				

▼ Price decrease below normal price fluctuation
 ▲ Normal Price Fluctuation
 ▲ Price increase above normal price fluctuation

Lowest Price
 Highest Price
 N/A Not Available

All Prices in YER