



Highlights:

- In Aleppo, escalation in fighting greatly affected market functionality and caused a rapid increase in the price of a standard food basket by 14.2 percent compared to last month and 36 percent compared to six months ago.
- Following severe food shortages in Darayya, the price of rice reached SYP 12,500/kg (36 times more than Damascus market price). Furthermore, despite recent airdrops to Deir-ez-Zor city, prices remain very high and humanitarian assistance is the main source of food for most besieged households.
- Compared to April 2015, nominal prices recorded significant increase, wheat flour (+51%), rice (+77%), subsidized bread (+120%) and shop bread (+43%) in line with the escalating inflation of Syrian Pound.

A: Standard Food Basket

In April 2016, the national average cost of a standard food basket¹ (group of essential commodities) was SYP 34,634, increased by 14.6 percent compared to last month. Deir-ez-Zor governorate recorded the highest cost with SYP 122,609, while the lowest cost was observed in Homs governorate at SYP 22,798.

Following recent airdrops by WFP, the price of a food basket in Deir-ez-Zor has shown a decrease of 6.5 percent when compared to 6 months ago, but still higher by 216 percent compared to April 2015.

In Aleppo, data indicates an extremely fluid situation, where there was a marked increase in the cost of a food basket following an escalating in fighting; it rose 14.2 percent compared to March and 36 percent compared to six months ago.

In besieged locations of Rural Damascus, despite recent humanitarian access and slightly better food availability, prices are still increasing and the cost of food basket rose by 7 percent compared to last month.

Governorate	Price April 2016	Price 1 month change	Price 6 months changes	Price 12 months changes
Aleppo	SYP 24,146	14.2%	36.1%	66.0%
Damascus	SYP 23,725	5.8%	30.5%	64.7%
Dar'a	SYP 24,513	5.4%	48.5%	67.1%
Deir-ez-Zor	SYP 122,609	11.4%	-6.5%	216%
Hama	SYP 24,415	9.4%	49.0%	57.9%
Al-Hasakeh	SYP 30,075	7.1%	68.2%	100.5%
Homs	SYP 22,798	11.9%	26.5%	48.8%
Lattakia	SYP 24,280	0.5%	43.8%	70.1%
Ar-Raqqa	SYP 33,269	11.3%	50.3%	131.2%
Rural Damascus	SYP 35,750	7.0%	27.1%	128%
As-Sweida	SYP 24,488	12.7%	33.4%	64.8%
Tartous	SYP 25,545	0.6%	50.1%	71.6%
Quneitra	SYP 25,230	5.5%	N/A	N/A
Idleb	SYP 24,638	N/A	N/A	N/A
Average	SYP 34,634	14.6%	37.6%	130%

1. The cost of a standard basket of dry goods providing 1,930 kcal a day for a family of five during a month. The basket includes 37 kg of bread, 19 kg rice, 19 kg lentils, 5 kg of sugar, and 7 kg of vegetable oil.

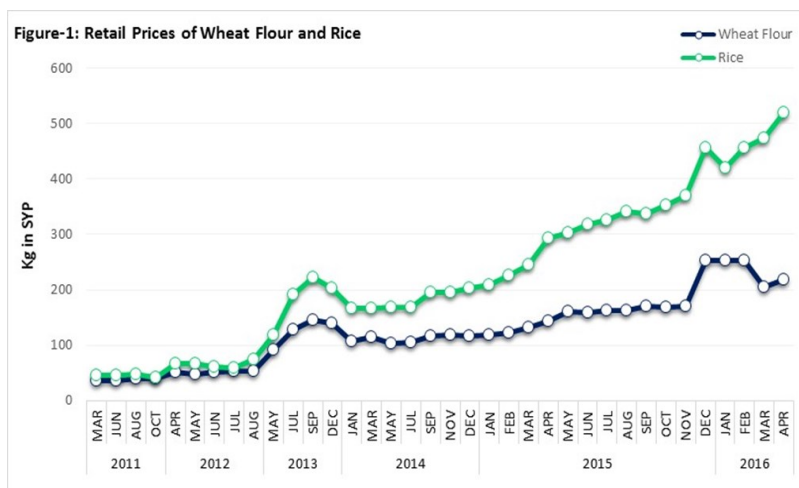
B: Retail Prices

1- Wheat Flour and Rice:

In April 2016, the average nominal retail price of wheat flour increased by 6.3 percent compared to the previous month, reaching SYP 218/Kg, while rice was sold at SYP 519/Kg, 9.7 percent more than in March, consistent with the upward trend observed since the beginning of the crisis. When compared to October 2015, the price of wheat flour increased by 29 percent and that of rice by 47 percent. In terms of percentages, the increases reached 523 and 1,053 for wheat flour and rice respectively considering pre-crisis levels.

Looking at the pattern of wheat flour retail prices across all main markets during April, Rural Damascus recorded the highest price, SYP 325/kg, while the lowest price was observed in Idleb where 1 kg of wheat flour sold at SYP 112/kg.

Markets in Deir-ez-Zor registered the highest price for rice, where it was sold at SYP 2,300/kg while As-Sweida markets registered the lowest price at SYP 275/kg.



Insecurity and supply-demand imbalances continued to drive significant price increases in besieged and active conflict areas. In Aleppo, the prices of wheat flour and rice rose by 22 and 18 percent respectively compared to last month. While in Deir-ez-Zor city, data indicates that prices are still increasing in spite of the food assistance air-dropped during April; 1 kg of rice sold at SYP 4,000 (more than 30 percent increase compared to last month price). Furthermore, in Darayya wheat flour was not available, or only in limited quantities, and the price for a kg of rice reached SYP 12,500/kg (more than 36 times compared to Damascus market price).

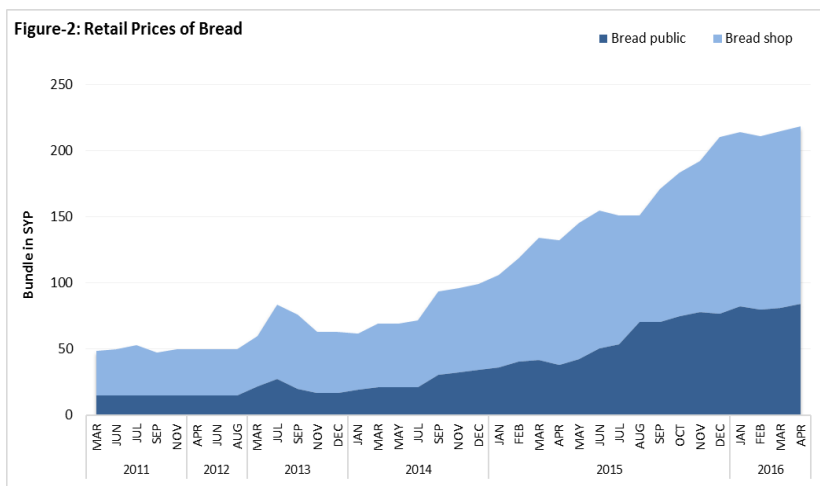
2- Bread:

During the reporting period, the average nominal retail prices for public (subsidized) bread and shop (unsubsidized) bread were SYP 84/bundle and SYP 134/bundle, respectively. The price of public bread increased by 4 percent while the price of shop bread remains unchanged compared to March 2016 prices.

Between October 2015 and April 2016, the average retail prices rose by approximately 12 and 24 percent for public and shop bread, respectively.

In April 2016, the functionality of bakeries slightly improved in Deir-ez-Zor city mainly due to better fuel availability. Meanwhile, in Aleppo active conflict had a negative impact on bread availability.

In besieged locations in Rural Damascus, bread remained sporadically available especially in Darayya, Madamiyet Elsham and Madaya. Bread has only been available on a limited basis for more than seven months.

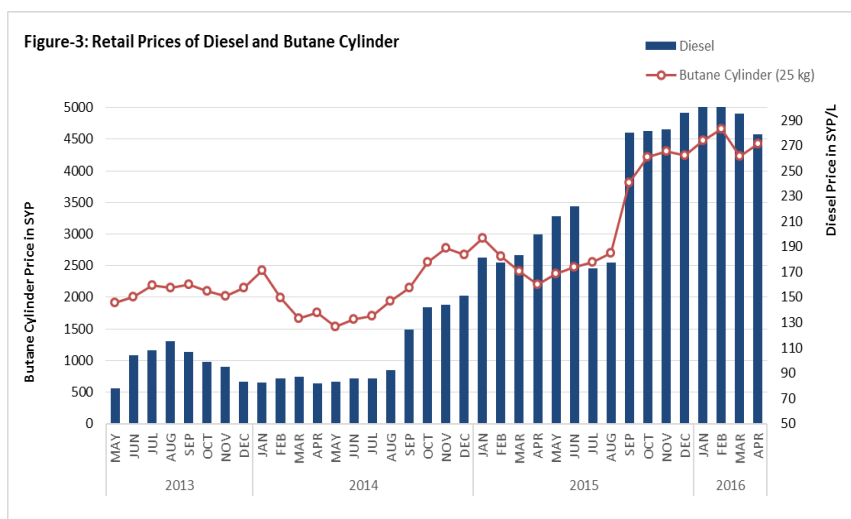


3– Diesel and cylinder of butane gas

In April 2016, the average price of diesel was SYP 279/L and SYP 4,424 for a cylinder of butane gas. Compared to last month, the average retail price of diesel decreased by 5.4 percent while the price of a cylinder of butane gas rose by 4.5 percent. On year-to-year levels, the price of diesel and a cylinder of butane gas went up by 39 percent and 100 percent respectively.

Despite the low demand on fuel during the summer season, diesel and butane gas prices are still increasing in Ar-Raqqa and Al-Hasakeh. Furthermore, in most besieged locations, where there is only limited availability, prices for diesel have reached SYP 7,000/L in Madaya and SYP 2,900/L in the black market of Deir-ez-Zor, which are fifty-fold and twenty-fold higher than official prices respectively.

In turn, the increase in fuel prices in besieged and conflict locations, as well as the continued depreciation of the Syrian Pound (reached an all-time low of 600 SYP/1 USD), will further exert more pressure on food insecure households.

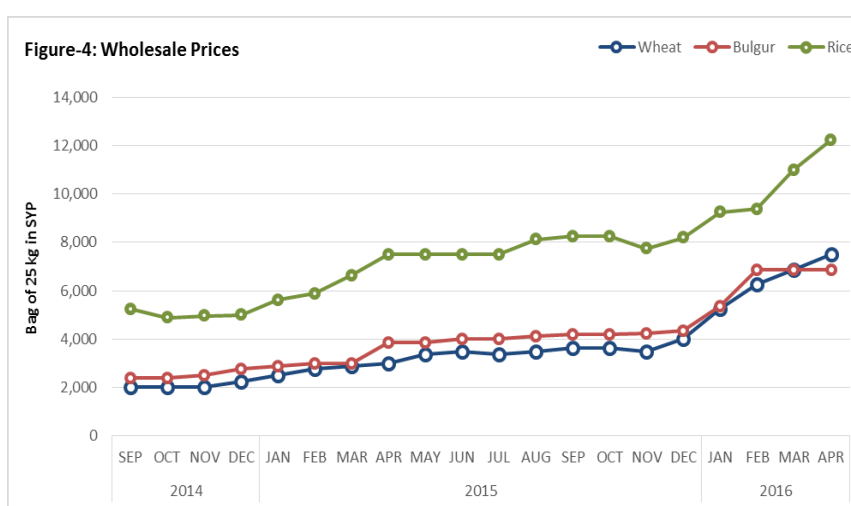


C. Wholesale Prices of main cereal in Damascus Market

During the reporting month, the wholesale price for the main food commodities continued to increase in line with the depreciation of the Syrian Pound. Wheat grain sold at SYP 7,500, bulgur at SYP 6,875 and white rice at SYP 12,250. Compared to March 2016, the wholesale price of bulgur remains unchanged, while rice increased by 11.4 percent and wheat grain by 9.1 percent. Between October 2015 and April 2016, the wholesale prices of wheat increased by 107 percent, bulgur by 64 percent and rice by 48 percent.

The year-on-year wholesale price of wheat grain increased by 150 percent, bulgur by 77 percent and white rice by 63 percent.

Wholesale prices for most food commodities are expected to further increase during the month of May due to the onset of Ramadan in early June and ongoing conflict in different parts of country.



D. Food Supply to Markets

During April 2016, markets in Damascus, Tartous, Homs and As-Sweida were functioning and supply routes were open. While in Aleppo, due to intensified airstrikes, the supply of essential food commodities was severely disrupted and the prices of most food commodities are rapidly increasing. In Ar-Raqqa and Al-Hasakeh, basic food commodities were only available on a limited basis and with high prices. Furthermore, in Darayya safe drinking water was not/limited available, alongside with poor food availability and high prices will further deteriorate the already dire food security situation of besieged households.

E. Terms of Trade (TOT):₂

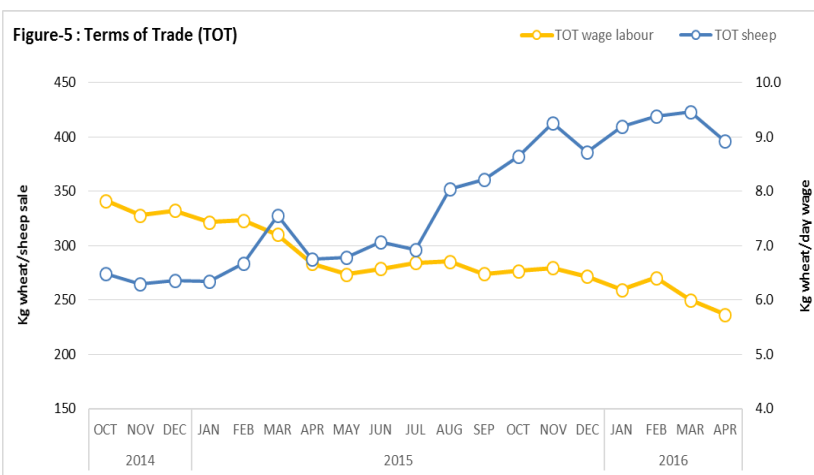
TOT between wage labour and wheat flour

The purchasing power (measured by terms of trade) of casual labourers has been facing a sharp decline, due to low wage rates against rising wheat flour prices. For instance, in April 2016, for a whole day of work, casual labourers could only buy about 5.7 kg of wheat flour/day, which is 12.2 percent lower than six months ago and 14 percent lower compared to same month last year.

The nominal average daily wage rate in April 2016 was SYP 1,250. The wage rate varied between market locations, ranging from SYP 800 in Al-Hasakeh to SYP 1,700 SYP in Lattakia.

TOT between sheep and wheat flour

In April 2016, the average price of a two-year old male sheep was SYP 86,318/head, similar to last month's price, but an increase of 33.7 percent compared to six months ago. The national average TOT between a sheep and wheat flour was 396kg/sheep, which is 6.4 percent lower compared to last month. The highest TOT was recorded in Deir-ez-Zor governorate (746kg/sheep), while the lowest TOT was in Al-Hasakeh governorate (245kg/sheep).



F. International Market Prices

The FAO Food Price Index averaged 151.8 points in April 2016, which is up by 0.7 percent compared to March average, but 10 percent below its April 2015 level.

The overall Food Price Index has gradually declined on a monthly basis since April 2014. Similarly, the Cereal Price Index averaged 150 points in April 2016, up by 1.5 compared to last month, but 10.4 percent below April 2015.

In the month of April 2016, the wheat price on local markets averaged USD 688.7/MT, which is more than four times higher than the price of wheat in the international market (USD 163/MT).

Data Source: <http://www.fao.org/worldfoodsituation/wfs-home/foodpricesindex/en/> and <http://www.indexmundi.com/commodities/?commodity=wheat>

Figure-6: Trends of food and cereals price indices

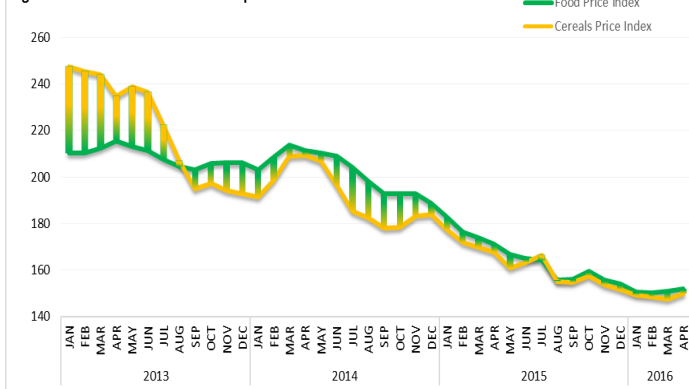
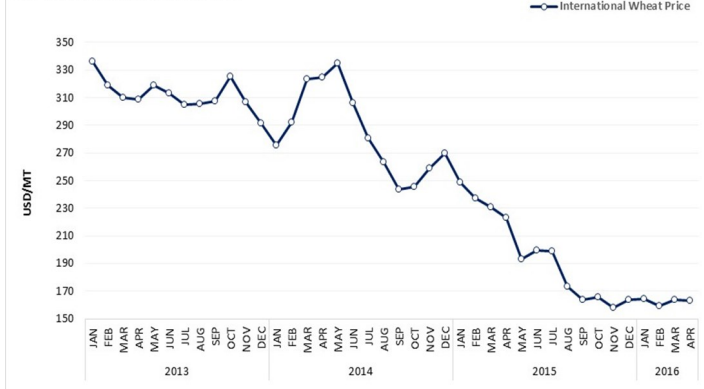


Figure-7: Trend in global wheat prices



2. The TOT are proxy indicators of the purchasing power of households that rely on livestock and/or casual labour as their main source of income for the purchase of cereals from local markets. TOT are important components of food security analysis. Changes in the terms of trade between wages/livestock and staple food commodities are indicative of the trends in purchasing power and the impact on the food security situation of households dependent on food purchases through income from daily wage labour and/or the sale of livestock.

Commodity	Governorate	Current Price	Price change (%)	Price change (%)	Average Change	Average Change	Commodity	Governorate	Current Price	Price change (%)	Price change (%)	Average Change	Average Change
			1M	6 M	1M	6 M				1M	6 M		
Bread Public (1.5 kg)	Aleppo	100	25.0	(17.7)	↑	↓	Rice (kg)	Aleppo	337	18.3	174.8	↑	↑
	Damascus	50	-	17.6	↔	↑		Damascus	338	4.2	13.7	↔	↑
	Dar'a	50	-	8.8	↔	↔		Dar'a	488	5.3	38.6	↔	↑
	Deir-ez-Zor	95	-	(25.8)	↔	↓		Deir-ez-Zor	2,300	18.8	97.6	↑	↑
	Idleb	125	N/A	N/A				Idleb	388	N/A	N/A		
	Hama	53	-	23.5	↔	↑		Hama	365	5.4	96.1	↔	↑
	Al- Hasakeh	50	-	21.3	↔	↑		Al- Hasakeh	606	2.1	59.2	↔	↑
	Homs	53	-	8.1	↔	↔		Homs	364	-	1.8	↔	↔
	Lattakia	50	-	29.0	↔	↑		Lattakia	380	-	29.6	↔	↑
	Quneitra	78	5.3	N/A	↔			Quneitra	425	3.3	N/A	↔	
	Ar-Raqqa	150	-	72.1	↔	↑		Ar-Raqqa	563	12.4	48.3	↑	↑
	Rural Damascus	225	-	8.8	↔	↔		Rural Damascus	450	5.9	55.6	↔	↑
	As-Sweida	50	-	17.6	↔	↑		As-Sweida	275	-	3.8	↔	↔
	Tartous	50	-	23.3	↔	↑		Tartous	413	-	51.3	↔	↑
Bread Shops (1.5 kg)	Aleppo	136	-	(35.4)	↔	↓	Sheep 2Y old Male	Aleppo	85,785	17.0	113.6	↑	↑
	Damascus	100	-	14.3	↔	↑		Damascus	82,638	7.7	52.5	↔	↑
	Dar'a	163	-	6.3	↔	↔		Dar'a	65,000	-	30.0	↔	↑
	Deir-ez-Zor	200	-	(13.3)	↔	↓		Deir-ez-Zor	223,750	(1.6)	12.1	↔	↑
	Idleb	163	N/A	N/A				Idleb	80,000	N/A	N/A		
	Hama	99	(4.2)	71.7	↔	↑		Hama	75,500	0.7	44.2	↔	↑
	Al- Hasakeh	88	-	7.7	↔	↔		Al- Hasakeh	58,750	19.3	26.4	↑	↑
	Homs	69	-	10.8	↔	↑		Homs	66,500	-	22.7	↔	↑
	Lattakia	65	-	23.8	↔	↑		Lattakia	70,000	-	27.3	↔	↑
	Quneitra	125	9.7	N/A	↔			Quneitra	105,938	6.7	N/A	↔	
	Ar-Raqqa	190	-	68.3	↔	↑		Ar-Raqqa	68,750	5.0	41.0	↔	↑
	Rural Damascus	188	(6.3)	50.0	↔	↑		Rural Damascus	82,275	(2.0)	28.4	↔	↑
	As-Sweida	84	1.2	46.1	↔	↑		As-Sweida	73,563	11.5	40.8	↑	↑
	Tartous	63	-	19.0	↔	↑		Tartous	90,625	-	58.3	↔	↑
Butane Cylinder (10 kg)	Aleppo	4,160	(0.3)	(5.5)	↔	↔	Sugar (kg)	Aleppo	345	15.3	62.2	↑	↑
	Damascus	2,000	-	8.8	↔	↔		Damascus	308	20.6	69.1	↑	↑
	Dar'a	3,075	-	(5.9)	↔	↔		Dar'a	338	26.7	66.7	↑	↑
	Deir-ez-Zor	13,850	7.1	(14.2)	↔	↓		Deir-ez-Zor	2,506	7.8	24.8	↔	↑
	Idleb	5,400	N/A	N/A				Idleb	285	N/A	N/A		
	Hama	5,600	2.5	176.6	↔	↑		Hama	290	7.2	39.8	↔	↑
	Al- Hasakeh	3,375	6.4	1.7	↔	↔		Al- Hasakeh	375	6.4	81.1	↔	↑
	Homs	2,365	-	4.0	↔	↔		Homs	266	-	8.7	↔	↔
	Lattakia	2,100	-	13.5	↔	↑		Lattakia	298	-	70.1	↔	↑
	Quneitra	3,300	(1.1)	N/A	↔			Quneitra	338	28.6	N/A	↑	
	Ar-Raqqa	7,600	25.8	35.7	↑	↑		Ar-Raqqa	394	27.1	105.7	↑	↑
	Rural Damascus	6,850	1.1	14.5	↔	↑		Rural Damascus	413	23.3	20.0	↑	↑
	As-Sweida	2,500	-	-	↔	↔		As-Sweida	363	36.1	88.3	↑	↑
	Tartous	2,225	-										

Commodity	Governorate	Current Price	Price change (%)	Price change (%)	Average Change	Average Change	Commodity	Governorate	Current Price	Price change (%)	Price change (%)	Average Change	Average Change
			1M	6 M	1M	6 M				1M	6 M		
Bread Public (1.5 kg)	Aleppo	100	25.0	(17.7)	↑	↓	Rice (kg)	Aleppo	337	18.3	174.8	↑	↑
	Damascus	50	-	17.6	↔	↑		Damascus	338	4.2	13.7	↔	↑
	Dar'a	50	-	8.8	↔	↔		Dar'a	488	5.3	38.6	↔	↑
	Deir-ez-Zor	95	-	(25.8)	↔	↓		Deir-ez-Zor	2,300	18.8	97.6	↑	↑
	Idleb	125	N/A	N/A				Idleb	388	N/A	N/A		
	Hama	53	-	23.5	↔	↑		Hama	365	5.4	96.1	↔	↑
	Al- Hasakeh	50	-	21.3	↔	↑		Al- Hasakeh	606	2.1	59.2	↔	↑
	Homs	53	-	8.1	↔	↔		Homs	364	-	1.8	↔	↔
	Lattakia	50	-	29.0	↔	↑		Lattakia	380	-	29.6	↔	↑
	Quneitra	78	5.3	N/A	↔			Quneitra	425	3.3	N/A	↔	
	Ar-Raqqa	150	-	72.1	↔	↑		Ar-Raqqa	563	12.4	48.3	↑	↑
	Rural Damascus	225	-	8.8	↔	↔		Rural Damascus	450	5.9	55.6	↔	↑
	As-Sweida	50	-	17.6	↔	↑		As-Sweida	275	-	3.8	↔	↔
Tartous	50	-	23.3	↔	↑	Tartous	413	-	51.3	↔	↑		
Bread Shops (1.5 kg)	Aleppo	136	-	(35.4)	↔	↓	Sheep 2Y old Male	Aleppo	85,785	17.0	113.6	↑	↑
	Damascus	100	-	14.3	↔	↑		Damascus	82,638	7.7	52.5	↔	↑
	Dar'a	163	-	6.3	↔	↔		Dar'a	65,000	-	30.0	↔	↑
	Deir-ez-Zor	200	-	(13.3)	↔	↓		Deir-ez-Zor	223,750	(1.6)	12.1	↔	↑
	Idleb	163	N/A	N/A				Idleb	80,000	N/A	N/A		
	Hama	99	(4.2)	71.7	↔	↑		Hama	75,500	0.7	44.2	↔	↑
	Al- Hasakeh	88	-	7.7	↔	↔		Al- Hasakeh	58,750	19.3	26.4	↑	↑
	Homs	69	-	10.8	↔	↑		Homs	66,500	-	22.7	↔	↑
	Lattakia	65	-	23.8	↔	↑		Lattakia	70,000	-	27.3	↔	↑
	Quneitra	125	9.7	N/A	↔			Quneitra	105,938	6.7	N/A	↔	
	Ar-Raqqa	190	-	68.3	↔	↑		Ar-Raqqa	68,750	5.0	41.0	↔	↑
	Rural Damascus	188	(6.3)	50.0	↔	↑		Rural Damascus	82,275	(2.0)	28.4	↔	↑
	As-Sweida	84	1.2	46.1	↔	↑		As-Sweida	73,563	11.5	40.8	↑	↑
Tartous	63	-	19.0	↔	↑	Tartous	90,625	-	58.3	↔	↑		
Butane Cylinder (10 kg)	Aleppo	4,160	(0.3)	(5.5)	↔	↔	Sugar (kg)	Aleppo	345	15.3	62.2	↑	↑
	Damascus	2,000	-	8.8	↔	↔		Damascus	308	20.6	69.1	↑	↑
	Dar'a	3,075	-	(5.9)	↔	↔		Dar'a	338	26.7	66.7	↑	↑
	Deir-ez-Zor	13,850	7.1	(14.2)	↔	↓		Deir-ez-Zor	2,506	7.8	24.8	↔	↑
	Idleb	5,400	N/A	N/A				Idleb	285	N/A	N/A		
	Hama	5,600	2.5	176.6	↔	↑		Hama	290	7.2	39.8	↔	↑
	Al- Hasakeh	3,375	6.4	1.7	↔	↔		Al- Hasakeh	375	6.4	81.1	↔	↑
	Homs	2,365	-	4.0	↔	↔		Homs	266	-	8.7	↔	↔
	Lattakia	2,100	-	13.5	↔	↑		Lattakia	298	-	70.1	↔	↑
	Quneitra	3,300	(1.1)	N/A	↔			Quneitra	338	28.6	N/A	↑	
	Ar-Raqqa	7,600	25.8	35.7	↔	↑		Ar-Raqqa	394	27.1	105.7	↑	↑
	Rural Damascus	6,850	1.1	14.5	↔	↑		Rural Damascus	413	23.3	20.0	↑	↑
	As-Sweida	2,500	-	-	↔	↔		As-Sweida	363	36.1	88.3	↑	↑
Tartous	2,225	-	22.7	↔	↑	Tartous	308	-	79.6	↔	↑		
Diesel (L)	Aleppo	222	32.6	28.7	↑	↑	Tea (kg)	Aleppo	2,640	8.5	60.0	↔	↑
	Damascus	235	(2.0)	14.6	↔	↑		Damascus	2,888	40.9	81.8	↑	↑
	Dar'a	218	-	-	↔	↔		Dar'a	3,500	21.8	55.6	↑	↑
	Deir-ez-Zor	1,550	-	76.8	↔	↑		Deir-ez-Zor	11,100	1.4	23.9	↔	↑
	Idleb	168	N/A	N/A				Idleb	3,000	N/A	N/A		
	Hama	218	1.4	39.7	↔	↑		Hama	2,150	1.1	44.9	↔	↑
	Al- Hasakeh	55	-	7.7	↔	↔		Al- Hasakeh	3,125	8.5	35.8	↔	↑
	Homs	180	-	(2.8)	↔	↔		Homs	2,438	-	31.5	↔	↑
	Lattakia	153	-	(3.2)	↔	↔		Lattakia	2,250	-	50.0	↔	↑
	Quneitra	245	-	N/A	↔			Quneitra	3,250	12.4	N/A	↑	
	Ar-Raqqa	81	(12.5)	(27.1)	↓	↓		Ar-Raqqa	3,150	3.3	52.7	↔	↑
	Rural Damascus	355	-	50.5	↔	↑		Rural Damascus	3,225	13.4	34.2	↑	↑
	As-Sweida	250	-	(8.3)	↔	↔		As-Sweida	2,800	-	27.3	↔	↑
Tartous	155	-	(1.6)	↔	↔	Tartous	2,638	-	83.0	↔	↑		
Lentils (kg)	Aleppo	449	7.3	29.1	↔	↑	Unskilled Labor wage	Aleppo	1,250	-	(25.0)	↔	↓
	Damascus	528	2.9	35.0	↔	↑		Damascus	1,500	-	1.7	↔	↔
	Dar'a	400	-	65.1	↔	↑		Dar'a	900	-	28.6	↔	↑
	Deir-ez-Zor	2,475	3.6	39.0	↔	↑		Deir-ez-Zor	1,100	-	30.0	↔	↑
	Idleb	425	N/A	N/A				Idleb	1,600	N/A	N/A		
	Hama	525	15.6	47.3	↑	↑		Hama	1,375	27.1	37.5	↑	↑
	Al- Hasakeh	569	19.8	101.0	↑	↑		Al- Hasakeh	800	-	-	↔	↔
	Homs	475	-	22.3	↔	↑		Homs	863	-	(6.0)	↔	↔
	Lattakia	525	-	52.3	↔	↑		Lattakia	1,700	(15.0)	70.0	↓	↑
	Quneitra	438	-	N/A	↔			Quneitra	1,200	-	N/A	↔	
	Ar-Raqqa	563	15.0	39.8	↑	↑		Ar-Raqqa	1,625	8.3	8.3	↔	↔
	Rural Damascus	650	8.3	36.9	↔	↑		Rural Damascus	1,500	-	1.7	↔	↔
	As-Sweida	600	17.1	41.2	↑	↑		As-Sweida	1,200	-	-	↔	↔
Tartous	549	-	55.1	↔	↑	Tartous	1,500	-	25.0	↔	↑		
Oil (L)	Aleppo	541	10.7	36.0	↑	↑	Wheat Flour (kg)	Aleppo	183	21.8	78.6	↑	↑
	Damascus	558	15.5	50.5	↑	↑		Damascus	269	38.0	70.8	↑	↑
	Dar'a	588	11.8	64.7	↑	↑		Dar'a	206	3.1	9.5	↔	↔
	Deir-ez-Zor	2,263	9.6	4.8	↔	↔		Deir-ez-Zor	300	4.5	49.8	↔	↑
	Idleb	450	N/A	N/A				Idleb	113	N/A	N/A		
	Hama	588	13.1	60.6	↑	↑		Hama	183	1.4	9.0	↔	↔
	Al- Hasakeh	575	3.4	52.5	↔	↑		Al- Hasakeh	240	4.6	44.2	↔	↑
	Homs	513	-	18.9	↔	↑		Homs	183	-	8.8	↔	↔
	Lattakia	519	-	48.2	↔	↑		Lattakia	200	-	23.1	↔	↑
	Quneitra	613	14.3	N/A	↑			Quneitra	200	16.7	N/A	↑	
	Ar-Raqqa	625	10.0	51.5	↑	↑		Ar-Raqqa	263	5.0	70.7	↔	↑
	Rural Damascus	638	13.7	39.0	↑	↑		Rural Damascus	325	19.2	50.5	↑	↑
	As-Sweida	600	17.1	54.6	↑	↑		As-Sweida	250	25.0	39.9	↑	↑
Tartous	556	-	48.3	↔	↑	Tartous	221	-	34.3	↔	↑		
Key:	↑	Prices increase above normal price fluctuation											
	↔	Normal Price Fluctuation											
	↓	Price decrease below normal price fluctuation											