



Issue No. 1
August 2016



© WFP/Abeer Etefa

IRAQ Market Monitor Report

Highlights

- Internal displacement constantly alters the demand of food commodities and therefore challenges the supply chain actors, including WFP and partners, to elastically respond.
- Kirkuk has registered an increase in food prices. Wheat flour price reached a record high of IQD 1,835 (69% higher than in July).
- The wages of unskilled labor has been rising in hard to reach areas while decreasing in the rest of the country. Yet buying a food basket in hotspot locations requires 35% more work than in other governorates.
- Key informants in Shirqat, report that everything is missing. IS is about to enter the city and markets are closed.
- In Anbar's districts of Falluja and Alqaiam, mVAM respondents reported lack of any main food commodity. The situation is similar in Haditha.

Contacts

Sally Haydock
sally.haydock@wfp.org

Maha Ahmed
maha.ahmed@wfp.org

Asif Niazi
asif.niazi@wfp.org

Filippo Minozzi
filippo.minozzi@wfp.org

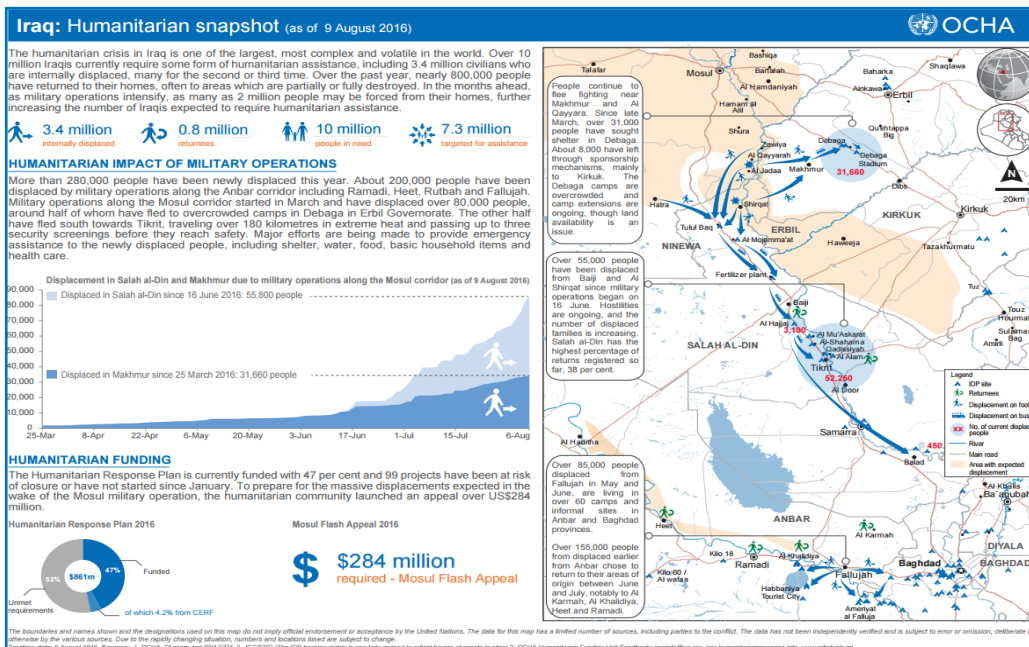
Socioeconomic Background

Despite Iraq's middle income status and notable development gains, recurrent bouts of localized violence and regional instability have contributed to unprecedented levels of humanitarian need and food insecurity¹. The Public Distribution System (PDS) delivery has been intermittent, especially in hard to reach areas, heavily impacting markets.

The escalation of conflict, and resulting waves of displacement have stressed the market system in the country. Six governorates have been especially affected with low availability of food and

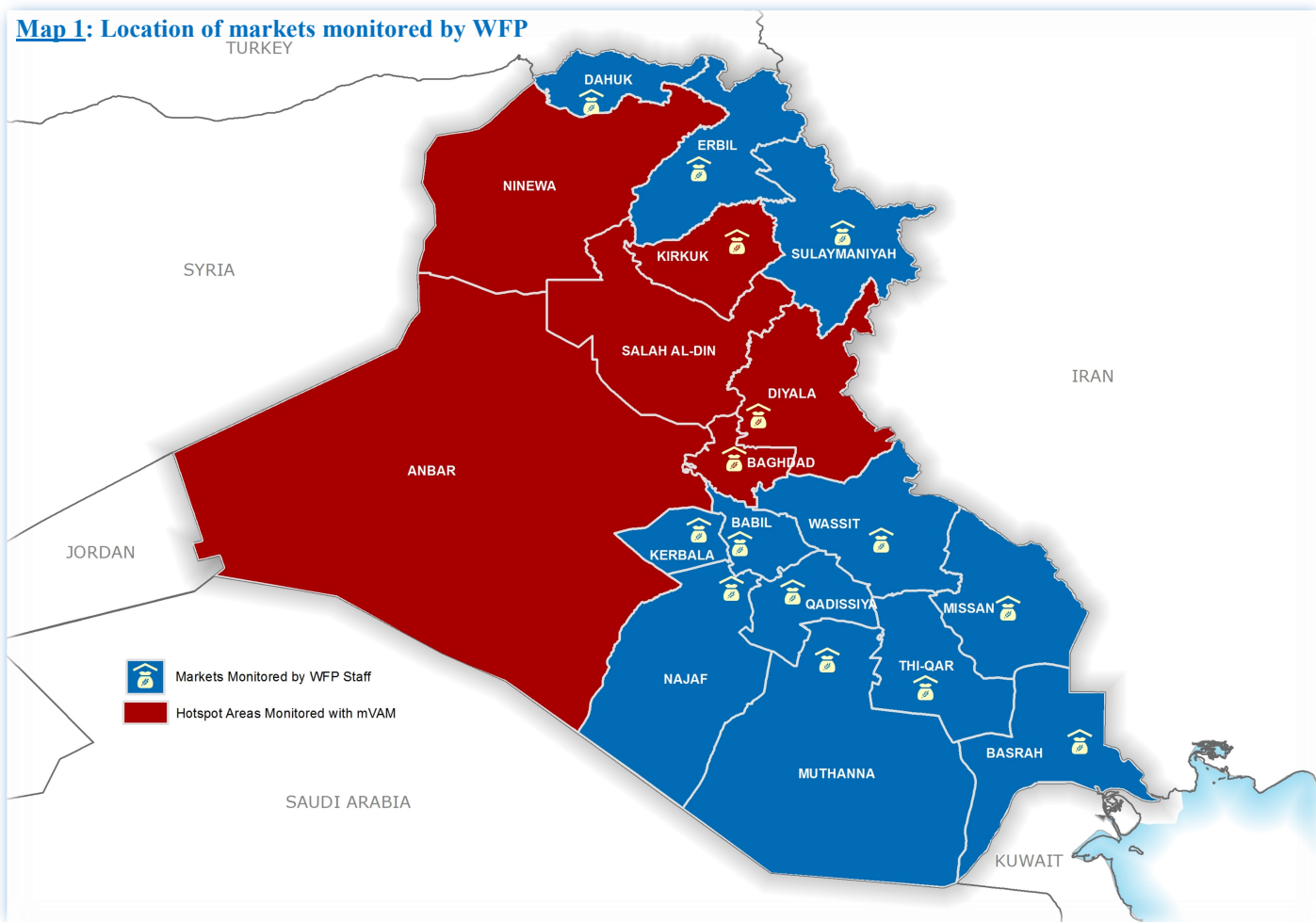
consequent impact on food prices. Due to the limited access to these locations WFP has worked with Islamic Relief Worldwide (IRW) to reach key informants and have a constant information flow, even from besieged areas, through the mVAM methodology.

Additionally, internal displacement constantly alters the demand of food commodities and challenges the supply chain actors, including WFP and partners, to elastically respond to these changes. A snapshot of the current situation is presented in the below dashboard².



¹ Food Security Cluster - Iraq: Overview

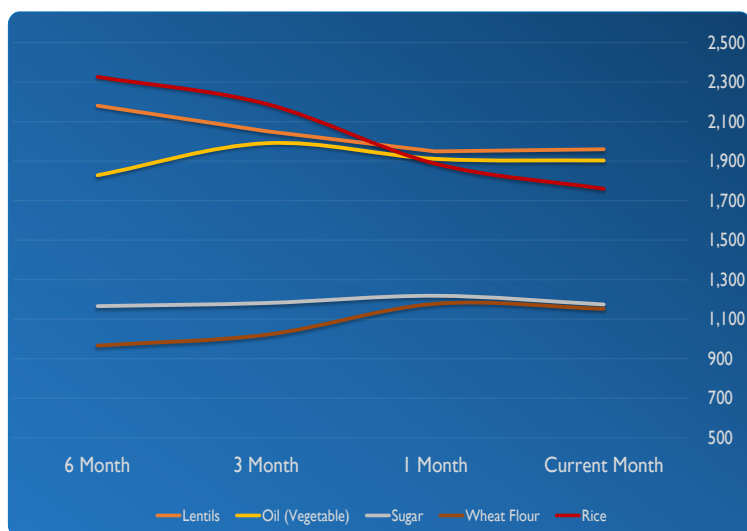
² OCHA - Iraq: Humanitarian Snapshot (August 9, 2016)

Map 1: Location of markets monitored by WFP

Food National Price Trends

The prices of the main food commodities in August have confirmed the decreasing trend started in June when the Iraqi army have liberated some strategic cities from IS, including Falluja. Prices have generally remained stable from July 2016 (Chart 1). Anbar and Sulaimaniyah have registered the best improvements with a decrease in the

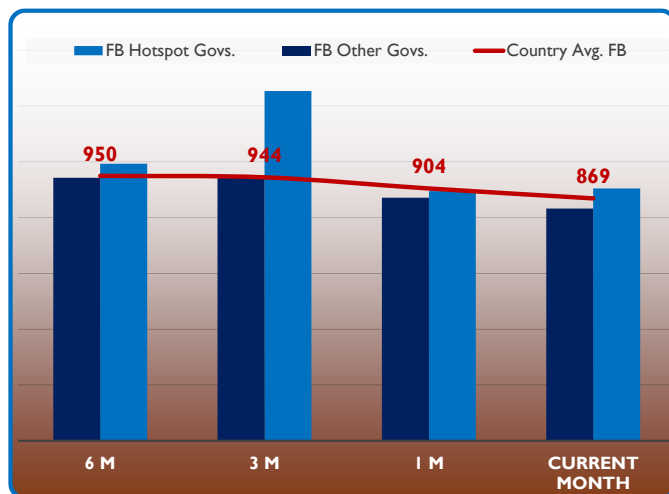
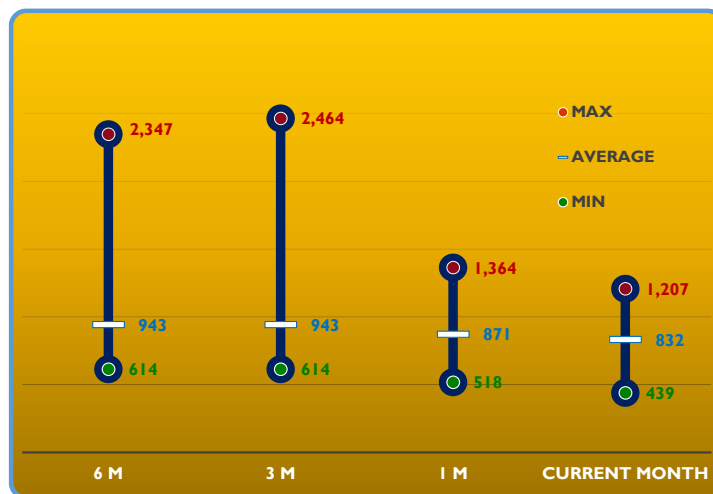
Chart 1: Price Trend of Main Food Commodities (in IQD/Unit)



minimum food basket cost of respectively 6% and 11% (Chart 2). In Anbar, rice (-18%), lentils (-12%) and onion (-11%) are the commodities whose price has decreased the most in the last month. It has though to be taken into communication that averages don't include location where food commodities have been reported as not available (see Methodology). In Sulaimaniyah, wheat flour (-26%), onion (-13%) and sugar (-12%).

On the other hand, Kirkuk has registered an increase on food commodity prices. In particular wheat flour price is 69% higher than in July reaching a record high of IQD 1,835. The skyrocketing of food prices in Kirkuk follows six months of surge of all food basket commodities.

Despite the decrease in the cost of the main food commodities, Sulaimaniyah still registers the highest cost of lentils, meat, vegetable oil, onion, rice and sugar. As a result the cost of the minimum food basket (IQD 1,207) is

Chart 2: Cost of Minimum Food Basket (in IQD)**Chart 3: Min. vs. Max. Cost of Food Basket (in IQD)**

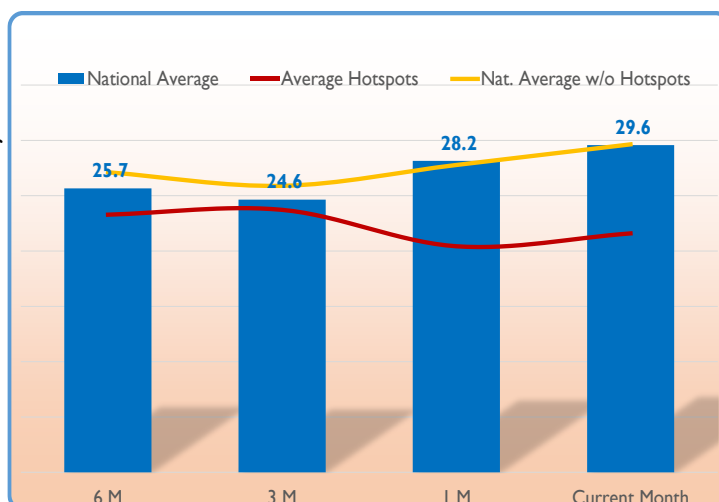
almost three times the cost of the same basket in Thi-Qar (IQD 439). Despite the high difference, data confirm an improving of the situation, indicating a higher market integration across governorates (Chart 3).

As showed in Chart 2 above, the cost of the food basket is still higher in hotspot locations where on average a food basket price is 9% higher than in the rest of the country. The slight worsening of the gap reflects the most recent events in Salah Al-Din (see Focus on Hard to Reach Areas).

Unskilled Labor Wages and Term of Trade (ToT)

The wage of unskilled labor has been rising in hotspot locations while decreasing in the rest of the country. The trend is positive for the last three months in hard to reach areas. Despite the convergence, the difference remain huge. On average an unskilled worker's wage is IQD 19,518 in hotspot areas while 22,831 in the other governorates. Looking at governorate level data, Sulaimaniyah, Babylon and Qadisya register the highest daily wages (IQD 30,000). Erbil offers the lowest daily stipend for unskilled workers (IQD 12,000). A relevant decrease of wages was recorded in August 2016 in Baghdad (-5%) and in a smaller scale in Kirkuk (-2%), while other hotspot locations offering higher salaries: Anbar (11%), Diyala (11%), Ninewa (13%), Salah Al-Din (18%) (Chart 4).

As a consequence of the wage-to-food basket terms of trade (ToT) has increased in hotspot areas. Due to lower cost of food commodities, the impact of lower salaries has not been felt in the rest of the governorates where the ToT has increased by 5% on average, with peaks in Thi-Qar (+13%) and Wassit (+8%). Buying a food basket in hard to reach locations require 35% more work compared to other governorates (Chart 5).

Chart 4: Cost of Unskilled Labor per day (in IQD)**Chart 5: Wage-to-Food Terms of Trade (in food baskets/day)**

Focus on Hard to Reach Areas

Looking in details at the six hard to reach governorates monitored through mVAM technology, we can see that the food basket cost in the last six months has followed different trends. In Anbar it has decreased in August 2016 after a couple of months of increase. Similar trend is registered in Salah Al-Din and, to a smaller extent, Diyala. On the other hand, Kirkuk has registered a constant increase in the last six months, while Baghdad and Ninewa food baskets have become cheaper in the same period (Chart 6). This impacted the wage-to-food ToT, with Ninewa (25) registering the highest and Anbar (18.7) the lowest (Chart 7).

Chart 6: Cost of Food Basket in Hotspot Areas (in IQD)

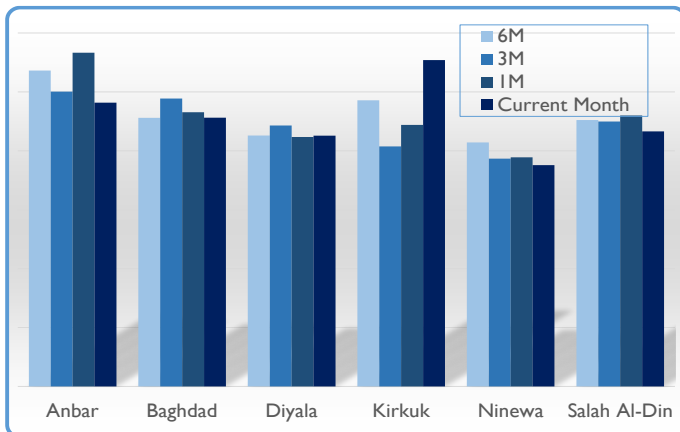
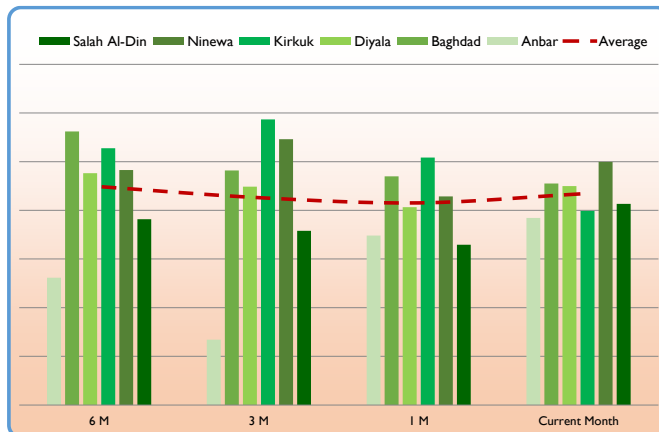


Chart 7: Wage-to-Food ToT in Hotspot Areas



For what concerns critical governorates, food availability is the most crucial issue. As presented in Chart 8, in Falluja and Alqaiam key informants reported lack of any main food commodity. The situation is similar in Haditha too, while other districts seem to have recovered after the liberation from IS forces and have absorbed

Chart 8: Food Availability Analysis in Anbar

Governorate	Commodity	Alkhaldiyah	Alqaiam	Falluja	Haditha	Heet	Ramadi	Amiriyat al-Fallujah	Al-Rutba
Anbar	Oil (Vegetable)	AV	NA	NA	MNA	AV	AV	AV	AV
	Onion	AV	NA	NA	MNA	AV	AV	AV	AV
	Rice	AV	NA	NA	MNA	AV	AV	AV	AV
	Sugar	AV	NA	NA	MNA	AV	AV	AV	AV
	Wheat Flour	AV	NA	NA	MNA	AV	AV	AV	AV

internal displacement in their economy. Key informants have reported several times that no food is available.

According to the International Organisation for Migration (IOM), over 12,400 families (67,800 individuals) have been displaced to Salah al-Din governorate since 16 June due to military operations.

The majority of the recently displaced in Salah al-Din are from within the governorate. Of the newly displaced in Salah al-Din governorate, more than 11,300 families are currently in Tikrit³. Key informants have reported that in Shirqat, where the situation is critical, everything is missing. ISIS is about to enter the city and markets are closed. In the last few days of the month some of the shop owners started selling, and people are buying what is available, but everything is very expensive. Among the most cited coping mechanisms, population in Shirqat is receiving food from relatives, friends or neighbors. Key informants report that they are living in very poor conditions and they need assistance as soon as possible. According to mVAM informant, people in Shirqat are sieged and cannot leave the city otherwise they would be killed by ISIS.

Chart 9: Food Availability Analysis in Salah Al-Din

Governorate	Commodity	Al-Qadisiyah	Balad	Beigy	Samarra	Tikrit	Shirqat
Salah Al-Din	Oil (Vegetable)	AV	AV	AV	AV	AV	NA
	Onion	AV	AV	AV	AV	AV	NA
	Rice	AV	AV	AV	AV	AV	NA
	Sugar	AV	AV	AV	AV	AV	MNA
	Wheat Flour	AV	AV	AV	AV	AV	MNA

³ IOM Iraq Situation Report—Mosul Response Update #2)

Methodology

Market information is collected on weekly basis by WFP field monitors. Additionally WFP in partnership with Islamic Relief Worldwide (IRW) collects market data remotely through mVAM technology from key informants in those governorates where access is restricted, using telephone interviews. Data are then cleaned and consolidated. Monthly averages are used for the Iraq Monthly Monitor Report. Map 1 shows the location of the WFP monitored markets as well as the hard to reach areas monitored through mVAM.

Field monitors collect prices for 23 food commodities, 3 fuel items, 7 hygiene commodities and the cost of unskilled labor for one day of work. WFP field monitors cover 12 governorates where access is not restricted plus three additional governorates (Kirkuk, Baghdad and Diyala) when the security situation allows. IRW key informants collect market prices of 8 main food commodities and the daily wage of unskilled labor from six hard to reach areas in central and northern governorates of Iraq (Anbar, Baghdad, Diyala, Kirkuk, Ninewa and Salh Al-Din) through mVAM technology .

The report is based on the analyses produced by the Integrated Market Surveillance Tool (IMST). The IMST is an agile market monitoring tool that was developed for Iraq Country Office (CO) and is aimed at storing raw data collected by field monitors and key informants, and creating contextualized analyses. The tool analyzes trends of main food and non-food commodities, minimum food basket, and provides an indication about how much the markets are integrated within and across governorates. Food and non-food prices are analyzed against previous periods, including key baselines, such as the pre-crisis values of February 2015. Non-food items prices are not reported in this report unless a change in the price level has an impact on food security.

The IMST also includes information regarding the availability of main food commodities in hotspot locations, which is collected by key informants. The classification of the availability is based on the monthly averages. A commodity is classified as **Available** when it is found available on every visit in the key market of a specific governorate; **Widely Available** when for only one visit the availability is not full; **Sporadically Available** when in at least half of the visits, the commodity is recorded as rare in the market; a commodity is **Mostly Not Available** when it was found only in rare cases in a governorate during the analyzed month; finally a commodity is classified as **Not Available** when it is not found in any market of a governorate at any time.

AV	Available
WAD	Widely Available
SAV	Sporadically Available
MNA	Mostly Not Available
NA	Not Available

The minimum food basket monitored by WFP contains five food commodities. The quantities are adjusted against the survival caloric intake needs. The five commodities are wheat flour, sugar, rice, vegetable oil and onion.

The IMST also provides specific and customizable analyses on hotspot areas, with district and sub-district level information. This allows to detect local issues regarding market price, availability as well as any other information regarding the specific market catchment area, including security and coping mechanism commonly adopted in the area. Given the unstable context the IMST is flexible enough to allow ad hoc analysis whenever required.

The Iraq Market Monitor Report is issued since August 2016 on a monthly basis.

NOTE: Due to the long-lasting conflict in Falluja and the related impact on markets, to avoid distortions on average price analyses by governorate and maintain consistency over time, the Falluja district has been removed from all analysis related to Anbar. Falluja's information and data are analyzed aside in district-level analyses.

Annex 1: Market Prices by Governorate

Market	Commodity	Current Month	Price Data in Previous Periods				% Change from Stated Period				Direction of change			
		Current Month	1 Month	3 Month	6 Month	12 Month	1 Month	3 Month	6 Month	12 Month	1 Month	3 Month	6 Month	12 Month
Anbar	Fresh Milk	1,895	1,979	2,175			-4%	-13%						
	Lentils	1,887	2,167	2,208	2,255		-13%	-15%	-16%					
	Meat (Beef)	13,860	13,917	13,708			0%	1%						
	Oil (Vegetable)	2,217	2,396	2,059	2,332		-7%	8%	-5%					
	Onion	785	931	997			-16%	-21%						
	Rice	1,777	2,424	1,929	2,153		-27%	-8%	-17%					
	Sugar	1,337	1,417	1,441	1,444		-6%	-7%	-7%					
	Wheat Flour	1,512	1,507	1,445	1,489		0%	5%	2%					
Babylon	Fresh Milk	2,000	2,000	2,000	2,000	2,000	0%	0%	0%	0%				
	Lentils	2,000	2,000	2,000	2,000	2,000	0%	0%	0%	0%				
	Meat (Beef)	13,000	13,000	14,000	14,000	14,000	0%	-7%	-7%	-7%				
	Oil (Vegetable)	2,250	2,250	2,500	2,500	2,500	0%	-10%	-10%	-10%				
	Onion	750	750	563	750	750	0%	33%	0%	0%				
	Rice	1,500	1,500	1,000	1,000	1,000	0%	50%	50%	50%				
	Sugar	1,000	1,333	750	750	750	-25%	33%	33%	33%				
	Wheat flour	1,000	1,000	1,000	1,000	1,000	0%	0%	0%	0%				
Baghdad	Fresh Milk	1,795	1,792	1,696			0%	6%						
	Lentils	1,985	2,021	2,161	1,984		-2%	-8%	0%					
	Meat (Beef)	13,545	13,688	13,130			-1%	3%						
	Oil (Vegetable)	1,655	1,813	1,935	1,984		-9%	-15%	-17%					
	Onion	765	807	913			-5%	-16%						
	Rice	1,955	1,958	2,048	1,969		0%	-5%	-1%					
	Sugar	1,303	1,302	1,274	1,180		0%	2%	10%					
	Wheat Flour	1,159	1,208	1,274	1,117		-4%	-9%	4%					
Basrah	Fresh Milk	4,000	4,000	6,000	6,000	6,000	0%	-33%	-33%	-33%				
	Lentils	2,000	2,000	2,000	2,000	1,500	0%	0%	33%					
	Meat (Beef)	13,000	13,000	14,000	14,000	14,000	0%	-7%	-7%	-7%				
	Oil (Vegetable)	1,500	1,500	2,000	2,000	2,000	0%	-25%	-25%	-25%				
	Onion	563	500	750	750	1,000	13%	-25%	-25%	-44%				
	Rice	2,000	2,000	2,000	2,250	2,500	0%	-11%	-20%					
	Sugar	1,000	1,000	1,000	1,000	1,000	0%	0%	0%	0%				
	Wheat flour	1,000	1,000	1,000	1,000	1,000	0%	0%	0%	0%				
Diyala	Fresh Milk	1,644	1,554	1,675			6%	-2%						
	Lentils	1,700	1,634	1,614	1,574		4%	5%	8%					
	Meat (Beef)	13,050	13,179	13,739			-1%	-5%						
	Oil (Vegetable)	1,844	1,911	1,917	1,904		-4%	-4%	-3%					
	Onion	643	625	813			3%	-21%						
	Rice	1,888	1,741	1,841	1,868		8%	3%	1%					
	Sugar	1,006	991	1,152	1,022		2%	-13%	-2%					
	Wheat Flour	1,050	1,188	1,242	1,096		-12%	-15%	-4%					
Dohuk	Fresh Milk	1,663	1,738	1,813	1,975	2,375	-4%	-8%	-16%	-30%				
	Lentils	1,963	2,013	1,900	1,963	2,125	-2%	3%	0%	-8%				
	Meat (Beef)	15,000	15,000	11,875	15,000	15,000	0%	26%	0%	0%				
	Oil (Vegetable)	1,538	1,500	1,750	1,750	1,750	3%	-12%	-12%	-12%				
	Onion	613	663	838	1,100	938	-8%	-27%	-44%	-35%				
	Rice	1,788	1,750	1,713	2,013	2,000	2%	4%	-11%	-11%				
	Sugar	788	750	850	863	1,000	5%	-7%	-9%	-21%				
	Wheat flour	900	838	850	950	1,000	7%	6%	-5%	-10%				
Erbil	Fresh Milk	1,750	1,750	2,000	2,000	2,000	0%	-13%	-13%	-13%				
	Lentils	1,500	1,500	2,000	2,000	2,000	0%	-25%	-25%	-25%				
	Meat (Beef)	16,000	15,000	15,000	16,000	16,000	7%	7%	0%	0%				
	Oil (Vegetable)	1,500	1,500	1,750	1,600	1,750	0%	-14%	-6%	-14%				
	Onion	750	750	1,000	1,250	750	0%	-25%	-40%	0%				
	Rice	2,500	2,500	9,000	8,500	2,000	0%	-72%	-71%	25%				
	Sugar	1,000	1,000	1,250	1,250	1,500	0%	-20%	-20%	-33%				
	Wheat flour	1,000	1,000	1,000	1,000	1,000	0%	0%	0%	0%				
Kerbala	Fresh Milk	2,000	2,000	2,000	2,000	2,000	0%	0%	0%	0%				
	Lentils	2,000	2,063	2,250	2,250	2,250	-3%	-11%	-11%	-11%				
	Meat (Beef)	16,000	16,000	16,000	16,000	16,000	0%	0%	0%	0%				
	Oil (Vegetable)	2,500	2,375	2,500	2,625	2,250	5%	0%	11%	1%				
	Onion	1,000	1,000	1,000	1,000	1,000	0%	0%	0%	0%				
	Rice	2,000	1,938	2,250	2,250	2,250	3%	-11%	-11%	-11%				
	Sugar	1,250	1,563	1,500	1,500	1,250	-20%	-17%	-17%	0%				
	Wheat flour	1,250	1,250	1,375	1,125	1,000	0%	-9%	11%	25%				
Kirkuk	Fresh Milk	1,443	1,550	1,319			-7%	9%						
	Lentils	1,651	1,478	1,436	1,421		12%	15%	16%					
	Meat (Beef)	13,205	12,967	12,759			2%	3%						
	Oil (Vegetable)	2,352	1,825	1,603	1,700		29%	47%	38%					
	Onion	682	658	457			4%	49%						
	Rice	2,107	2,017	1,808	2,331		4%	17%	-10%					
	Sugar	1,552	1,425	1,313	1,306		9%	18%	19%					
	Wheat Flour	1,835	1,083	1,026	1,189		69%	79%	54%					

Market	Commodity	Current Month	Price Data in Previous Periods				% Change from Stated Period				Direction of change			
		Current Month	1 Month	3 Month	6 Month	12 Month	1 Month	3 Month	6 Month	12 Month	1 Month	3 Month	6 Month	12 Month
Missan	Fresh Milk	4,000	7,000	6,000	6,000	6,000	-43%	-33%	-33%	-33%	↕	↕	↕	↕
	Lentils	2,000	2,000	2,000	2,250	2,500	0%	0%	-11%	-20%	↔	↔	↕	↕
	Meat (Beef)	14,000	14,000	14,000	14,000	14,000	0%	0%	0%	0%	↔	↔	↔	↔
	Oil (Vegetable)	1,500	1,500	2,000	1,500	2,000	0%	-25%	0%	-25%	↔	↕	↔	↕
	Onion	563	500	750	750	1,000	13%	-25%	-25%	-44%	↕	↕	↕	↕
	Rice	2,000	2,000	2,000	2,000	2,000	0%	0%	0%	0%	↔	↔	↔	↔
	Sugar	1,000	1,000	1,000	1,000	1,000	0%	0%	0%	0%	↔	↔	↔	↔
	Wheat flour	1,000	1,000	1,000	1,000	1,000	0%	0%	0%	0%	↔	↔	↔	↔
Muthana	Fresh Milk	1,500	1,500				0%				↔	↔	↔	↔
	Lentils	2,000	2,000	2,250	2,250	2,000	0%	-11%	-11%	0%	↔	↕	↕	↔
	Meat (Beef)	7,500	7,000	13,000	14,000	14,000	7%	-42%	-46%	-46%	↕	↕	↕	↕
	Oil (Vegetable)	1,750	1,500	1,500	1,500	1,750	17%	17%	17%	0%	↕	↕	↕	↔
	Onion	500	750	875	750	1,188	-33%	-43%	-33%	-58%	↕	↕	↕	↕
	Rice	2,000	2,000	2,000	2,075	2,150	0%	0%	-4%	-7%	↔	↔	↔	↔
	Sugar	1,000	1,000	1,025	1,100	1,150	0%	-2%	-9%	-13%	↔	↔	↔	↕
	Wheat flour	1,250	1,250	750	750	750	0%	67%	67%	67%	↔	↕	↕	↕
Najaf	Fresh Milk	3,000	3,000	3,000	3,000	3,000	0%	0%	0%	0%	↔	↔	↔	↔
	Lentils	1,813	2,000	2,000	2,000	1,750	-9%	-9%	-9%	4%	↕	↕	↔	↔
	Meat (Beef)	15,000	15,000	15,000	15,000	15,000	0%	0%	0%	0%	↔	↔	↔	↔
	Oil (Vegetable)	1,750	1,750	1,750	1,750	2,000	0%	0%	0%	-13%	↔	↔	↔	↕
	Onion	750	750	750	750	750	0%	0%	0%	0%	↔	↔	↔	↔
	Rice	2,438	2,188	2,250	2,250	2,250	11%	8%	8%	8%	↕	↕	↔	↔
	Sugar	1,500	1,500	1,500	1,500	1,500	0%	0%	0%	0%	↔	↔	↔	↔
	Wheat flour	1,500	1,500	500	500	417	0%	200%	200%	260%	↔	↕	↕	↕
Ninewa	Fresh Milk	1,480	1,510	1,658			-2%	-11%			↔	↕	↔	↔
	Lentils	1,375	1,490	1,722	1,510		-8%	-20%	-9%		↕	↕	↔	↔
	Meat (Beef)	11,842	12,083	12,684			-2%	-7%			↔	↕	↔	↔
	Oil (Vegetable)	1,651	1,677	1,713	1,700		-2%	-4%	-3%		↔	↔	↔	↔
	Onion	637	750	763			-15%	-17%			↕	↕	↔	↔
	Rice	1,566	1,610	1,637	1,798		-3%	-4%	-13%		↔	↔	↕	↔
	Sugar	1,000	1,042	1,065	958		-4%	-6%	4%		↔	↕	↔	↔
	Wheat Flour	1,039	1,073	956	1,114		-3%	9%	-7%		↔	↕	↔	↔
Qadisiya	Fresh Milk	2,000	2,000	2,000	2,000	2,000	0%	0%	0%	0%	↔	↔	↔	↔
	Lentils	2,000	2,000	2,000	2,000	2,000	0%	0%	0%	0%	↔	↔	↔	↔
	Meat (Beef)	13,000	13,000	15,000	15,000	16,500	0%	-13%	-13%	-21%	↔	↕	↕	↕
	Oil (Vegetable)	2,250	2,250	2,500	2,500	2,500	0%	-10%	-10%	-10%	↔	↕	↔	↔
	Onion	750	750	688	1,000	875	0%	9%	-25%	-14%	↔	↕	↕	↕
	Rice	1,500	1,500	1,000	1,000	1,000	0%	50%	50%	50%	↔	↕	↕	↕
	Sugar	1,000	1,000	750	750	750	0%	33%	33%	33%	↔	↕	↕	↕
	Wheat flour	1,000	1,000	750	750	750	0%	33%	33%	33%	↔	↕	↕	↕
Salah Al-Din	Fresh Milk	1,493	1,417	1,642			5%	-9%			↕	↕	↔	↔
	Lentils	1,914	1,781	1,950	1,869		7%	-2%	2%		↕	↔	↔	↔
	Meat (Beef)	12,564	12,030	11,900			4%	6%			↔	↕	↔	↔
	Oil (Vegetable)	1,750	1,750	1,859	1,856		0%	-6%	-6%		↔	↕	↔	↔
	Onion	612	576	675			6%	-9%			↕	↕	↔	↔
	Rice	1,914	2,030	1,848	1,906		-6%	4%	0%		↕	↔	↔	↔
	Sugar	1,090	1,258	1,152	1,233		-13%	-5%	-12%		↕	↕	↕	↕
	Wheat Flour	1,029	1,192	1,213	1,188		-14%	-15%	-13%		↕	↕	↕	↕
Sulaimaniyah	Fresh Milk	2,500	2,625	2,375	2,313		-5%	5%	8%		↔	↕	↔	↔
	Lentils	2,500	2,500	2,688	2,688		0%	-7%	-7%		↔	↕	↔	↔
	Meat (Beef)	16,750	17,000	16,500	16,375		-1%	2%	2%		↔	↔	↔	↔
	Oil (Vegetable)	3,250	3,500	2,500	2,438		-7%	30%	33%		↕	↕	↕	↕
	Onion	1,313	1,500	1,313	1,313		-13%	0%	0%		↕	↔	↔	↔
	Rice	2,750	2,938	2,200	1,863		-6%	25%	48%		↕	↕	↕	↕
	Sugar	1,813	2,063	1,750	1,500		-12%	4%	21%		↕	↔	↕	↕
	Wheat flour	1,250	1,688	1,375	1,375		-26%	-9%	-9%		↕	↕	↔	↔
Thi Qar	Fresh Milk	5,000		5,000	5,000	5,250		0%	0%	-5%		↔	↔	↔
	Lentils	2,500		2,500	2,375	2,750		0%	5%	-9%		↔	↔	↔
	Meat (Beef)	12,000		12,000	12,000	12,000		0%	0%	0%		↔	↔	↔
	Oil (Vegetable)	1,500		2,000	2,000	2,438		-25%	-25%	-38%		↕	↕	↕
	Onion	1,063		750	938	875		42%	13%	21%		↕	↕	↕
	Rice	1	1	1,250	1,250	1,638		-100%	-100%	-100%		↕	↕	↕
	Sugar	1,250		1,250	1,250	1,250		0%	0%	0%		↕	↔	↕
	Wheat flour	900		575	575	788		57%	57%	14%		↕	↕	↕
Wasit	Fresh Milk	5,000	5,000	5,000	5,000	6,250	0%	0%	0%	-20%	↔	↔	↔	↕
	Lentils	2,500	2,500	2,250	2,250	14,000	0%	11%	11%	-82%	↔	↕	↕	↕
	Meat (Beef)	12,000	12,000	12,000	12,000	5,063	0%	0%	0%	137%	↔	↔	↔	↕
	Oil (Vegetable)	1,500	1,500	2,000	2,000	6,750	0%	-25%	-25%	-78%	↔	↕	↕	↕
	Onion	1,000	938	813	1,188	5,000	7%	23%	-16%	-80%	↕	↕	↕	↕
	Rice	1	1	1,650	1,650	2,813	0%	-100%	-100%	-100%	↔	↕	↕	↕
	Sugar	1,250	1,250	1,250	1,250	500	0%	0%	0%	150%	↔	↔	↔	↕
	Wheat flour	1,075	1,250	1,050	1,050	1,425	-14%	2%	2%	-25%	↕	↔	↔	↕

Annex 2: Market Prices by Commodity

Commodity	Market	Current	Price Data in Previous Periods				% Change from Stated				Direction of change			
		Month	1	3	6	12	1	3	6	12	1	3	6	12
		Month	Month	Month	Month	Month	Month	Month	Month	Month	Month	Month	Month	Month
Fresh Milk	National Average	2,454	2,495	2,785	3,390	3,488	-2%	-12%	-28%	-33%	0	0	0	0
	Anbar	1,895	1,979	2,175	2,785	2,883	-4%	-10%	-13%	-18%	0	0	0	0
	Babylon	2,000	2,000	2,000	2,000	2,000	0%	0%	0%	0%	0	0	0	0
	Baghdad	1,795	1,792	1,696	1,696	1,696	0%	0%	0%	0%	0	0	0	0
	Bashra	4,000	4,000	4,000	4,000	4,000	0%	-33%	-33%	-33%	0	0	0	0
	Diya	1,644	1,554	1,675	1,675	1,675	6%	-2%	0%	0%	0	0	0	0
	Dohuk	1,663	1,738	1,813	1,813	1,813	-4%	-8%	-16%	-30%	0	0	0	0
	Erbil	1,750	1,750	2,000	2,000	2,000	0%	-13%	-13%	-13%	0	0	0	0
	Kerbala	2,000	2,000	2,000	2,000	2,000	0%	0%	0%	0%	0	0	0	0
	Kirkuk	1,443	1,550	1,550	1,550	1,550	-7%	9%	0%	0%	0	0	0	0
	Missan	4,000	4,000	4,000	4,000	4,000	-43%	-33%	-33%	-33%	0	0	0	0
	Muthana	1,500	1,500	1,500	1,500	1,500	0%	0%	0%	0%	0	0	0	0
	Najaf	3,000	3,000	3,000	3,000	3,000	0%	0%	0%	0%	0	0	0	0
	Ninewa	1,480	1,510	1,658	1,658	1,658	-2%	-11%	0%	0%	0	0	0	0
	Qadisiya	2,000	2,000	2,000	2,000	2,000	0%	0%	0%	0%	0	0	0	0
	Salah Al-Din	1,493	1,493	1,642	1,642	1,642	5%	-9%	0%	0%	0	0	0	0
	Sulamanyah	2,500	2,625	2,375	2,375	2,375	-5%	5%	8%	0%	0	0	0	0
	Thi Qar	5,000	5,000	5,000	5,000	5,250	0%	0%	-5%	0%	0	0	0	0
	Wasit	5,000	5,000	5,000	5,000	5,000	0%	0%	-20%	0%	0	0	0	0

Commodity	Market	Current	Price Data in Previous Periods				% Change from Stated				Direction of change			
		Month	1	3	6	12	1	3	6	12	1	3	6	12
		Month	Month	Month	Month	Month	Month	Month	Month	Month	Month	Month	Month	Month
Lentils	National Average	1,960	1,950	2,052	2,181	2,170	1%	-4%	-10%	-38%	0	0	0	0
	Anbar	1,887	1,887	2,000	2,255	2,255	-13%	-15%	-16%	-16%	0	0	0	0
	Babylon	2,000	2,000	2,000	2,000	2,000	0%	0%	0%	0%	0	0	0	0
	Baghdad	1,985	2,021	2,161	2,097	2,097	-2%	-8%	-5%	-5%	0	0	0	0
	Bashra	2,000	2,000	2,000	2,000	2,000	0%	0%	0%	33%	0	0	0	0
	Diya	1,700	1,634	1,614	1,614	1,614	4%	5%	-48%	0%	0	0	0	0
	Dohuk	1,963	2,013	1,900	1,963	1,963	-2%	3%	0%	-8%	0	0	0	0
	Erbil	1,500	1,500	2,000	2,000	2,000	0%	-25%	-25%	-25%	0	0	0	0
	Kerbala	2,000	2,063	2,250	2,250	2,250	-3%	-11%	-11%	-11%	0	0	0	0
	Kirkuk	1,651	1,651	1,984	1,984	1,984	12%	15%	-17%	-17%	0	0	0	0
	Missan	2,000	2,000	2,000	2,250	2,500	0%	0%	-11%	-20%	0	0	0	0
	Muthana	2,000	2,000	2,250	2,250	2,000	0%	-11%	-11%	0%	0	0	0	0
	Najaf	1,813	2,000	2,000	2,000	1,750	-9%	-9%	-9%	4%	0	0	0	0
	Ninewa	1,275	1,490	1,722	1,904	1,904	-8%	-20%	-28%	0%	0	0	0	0
	Qadisiya	2,000	2,000	2,000	2,000	2,000	0%	0%	0%	0%	0	0	0	0
	Salah Al-Din	1,914	1,781	1,950	1,950	1,950	7%	-2%	13%	0%	0	0	0	0
	Sulamanyah	2,500	2,500	2,400	2,400	2,400	0%	-7%	-7%	0%	0	0	0	0
	Thi Qar	2,500	2,500	2,375	2,375	2,375	0%	5%	-9%	0%	0	0	0	0
	Wasit	2,500	2,500	2,250	2,250	2,250	0%	11%	11%	-82%	0	0	0	0

Commodity	Market	Current	Price Data in Previous Periods				% Change from Stated				Direction of change			
		Month	1	3	6	12	1	3	6	12	1	3	6	12
		Month	Month	Month	Month	Month	Month	Month	Month	Month	Month	Month	Month	Month
Meat (Beef)	National Average	13,406	13,404	13,483	16,492	13,778	0%	-2%	25%	-3%	0	0	0	0
	Anbar	13,840	13,917	13,708	13,708	13,708	0%	1%	0%	0%	0	0	0	0
	Babylon	13,000	13,000	14,000	14,000	14,000	0%	-7%	-7%	-7%	0	0	0	0
	Baghdad	13,545	13,688	13,130	13,798	13,798	-1%	3%	653%	0%	0	0	0	0
	Bashra	13,000	13,000	14,000	14,000	14,000	0%	-7%	-7%	-7%	0	0	0	0
	Diya	13,050	13,179	13,739	13,906	13,906	-1%	5%	585%	0%	0	0	0	0
	Dohuk	15,000	15,000	15,000	15,000	15,000	0%	26%	0%	0%	0	0	0	0
	Erbil	16,000	15,000	15,000	16,000	16,000	7%	7%	0%	0%	0	0	0	0
	Kerbala	16,000	16,000	16,000	16,000	16,000	0%	0%	0%	0%	0	0	0	0
	Kirkuk	13,305	12,967	12,759	13,400	13,400	2%	3%	885%	0%	0	0	0	0
	Missan	14,000	14,000	14,000	14,000	14,000	0%	0%	0%	0%	0	0	0	0
	Muthana	15,000	15,000	15,000	15,000	15,000	0%	-42%	-46%	-46%	0	0	0	0
	Najaf	15,000	15,000	15,000	15,000	15,000	0%	0%	0%	0%	0	0	0	0
	Ninewa	11,842	12,083	12,684	12,171	12,171	-2%	-7%	445%	0%	0	0	0	0
	Qadisiya	13,000	13,000	15,000	15,000	15,000	0%	-13%	-13%	-21%	0	0	0	0
	Salah Al-Din	12,564	12,030	11,900	11,900	11,900	4%	6%	965%	0%	0	0	0	0
	Sulamanyah	16,750	16,000	16,500	16,500	16,500	-1%	2%	2%	0%	0	0	0	0
	Thi Qar	12,000	12,000	12,000	12,000	12,000	0%	0%	0%	0%	0	0	0	0
	Wasit	12,000	12,000	12,000	12,000	12,000	0%	0%	0%	0%	0	0	0	0

Commodity	Market	Current	Price Data in Previous Periods				% Change from Stated				Direction of change			
		Month	1	3	6	12	1	3	6	12	1	3	6	12
		Month	Month	Month	Month	Month	Month	Month	Month	Month	Month	Month	Month	Month
Oil (Vegetable)	National Average	1,903	1,912	1,991	1,828	2,517	0%	-4%	4%	-24%	0	0	0	0
	Anbar	2,217	2,394	2,059	2,332	2,332	-7%	8%	-5%	-5%	0	0	0	0
	Babylon	2,250	2,250	2,500	2,500	2,500	0%	-10%	-10%	-10%	0	0	0	0
	Baghdad	1,635	1,813	1,935	1,935	1,935	-9%	-15%	51%	0%	0	0	0	0
	Bashra	2,000	2,000	2,000	2,000	2,000	0%	-25%	-25%	-25%	0	0	0	0
	Diya	1,844	1,911	1,917	1,891	1,891	-4%	-4%	55%	0%	0	0	0	0
	Dohuk	1,538	1,538	1,750	1,750	1,750	3%	-12%	-12%	-12%	0	0	0	0
	Erbil	1,500	1,500	1,750	1,750	1,750	0%	-14%	-6%	-14%	0	0	0	0
	Kerbala	2,500	2,375	2,375	2,375	2,375	5%	0%	5%	11%	0	0	0	0
	Kirkuk	2,352	1,825	1,603	1,114	1,114	29%	47%	111%	0%	0	0	0	0
	Missan	1,750	1,750	2,000	2,000	2,000	0%	-25%	0%	-25%	0	0	0	0
	Muthana	1,750	1,750	1,500	1,500	1,500	17%	17%	0%	0%	0	0	0	0
	Najaf	1,750	1,750	1,750	1,750	2,000	0%	0%	0%	-13%	0	0	0	0
	Ninewa	1,651	1,677	1,713	1,188	1,188	-2%	-4%	39%	0%	0	0	0	0
	Qadisiya	2,250	2,250	2,250	2,500	2,500	0%	-10%	-10%	-10%	0	0	0	0
	Salah Al-Din	1,750	1,750	1,859	1,859	1,859	0%	-6%	0%	0%	0	0	0	0
	Sulamanyah	2,500	2,500	2,500	2,438	2,438	-7%	30%	33%	0%	0	0	0	0
	Thi Qar	2,500	2,500	2,000	2,000	2,438	-25%	-25%	-38%	0%	0	0	0	0
	Wasit	2,500	2,500	2,000	2,000	2,438	0%	-25%	-25%	-78%	0	0	0	0

Commodity	Market	Current	Price Data in Previous Periods				% Change from Stated				Direction of change			
		Current Month	1	3	6	12	1	3	6	12	1	3	6	12
			Month	Month	Month	Month	Month	Month	Month	Month	Month	Month	Month	Month
Onion	National Average	763	776	817	961	1,284	-2%	-7%	-21%	-41%	0	0	0	0
	Anbar	785	931	997	997	997	-16%	-21%	0%	0%	0	0	0	0
	Babylon	750	750	563	563	563	0%	33%	0%	0%	0	0	0	0
	Baghdad	765	807	913	913	913	-5%	-16%	0%	0%	0	0	0	0
	Bashra	563	563	750	750	1,000	13%	-25%	-25%	-44%	0	0	0	0
	Diya	643	625	813	813	813	3%	-21%	0%	0%	0	0	0	0
	Dohuk	613	643	838	1,100	938	-8%	-27%	-44%	-35%	0	0	0	0
	Erbil	750	750	1,000	1,250	1,250	0%	-25%	-40%	0%	0	0	0	0
	Kerbala	1,000	1,000	1,000	1,000	1,000	0%	0%	0%	0%	0	0	0	0
	Kirkuk	682	658	750	750	750	4%	49%	0%	0%	0	0	0	0
	Misran	563	563	750	750	1,000	13%	-25%	-25%	-44%	0	0	0	0
	Muthana	750	750	875	875	1,188	-33%	-43%	-33%	-58%	0	0	0	0
	Najaf	750	750	750	750	750	0%	0%	0%	0%	0	0	0	0
	Ninewa	637	750	763	763	763	-15%	-17%	0%	0%	0	0	0	0
	Qadisiya	750	750	688	1,000	875	0%	9%	-25%	-14%	0	0	0	0
Salah Al-Din	612	576	675	675	675	6%	-9%	0%	0%	0	0	0	0	
Sulaymaniyah	1,000	1,000	1,000	1,000	1,000	-13%	0%	0%	0%	0	0	0	0	
The Qur	1,063	750	913	913	875	42%	13%	21%	21%	0	0	0	0	
Wasit	1,000	938	913	1,188	875	7%	23%	-16%	-80%	0	0	0	0	