



IRAQ Market Monitor Report

Socioeconomic Background

- The Mosul offensive and resulting waves of displacement keep stressing the markets in Iraq. In September Qayyarah and Shirqat were re-taken from Islamic State (IS) by Iraqi forces. WFP is coordinating with the Government of Iraq's public distribution system (PDS). WFP is working to fill gaps in PDS provision and make food available to the most vulnerable. This process has been effective in newly retaken areas of Qayyarah and Shirqat.

governorate to assess market functionality after the last wave of displacement. The main objective of this assessment was to analyze if markets are able to respond to increased demand. Markets are functional, and main food commodities are available to cover consumers' demand at reasonable prices¹. However the situation keeps being volatile and WFP is closely monitoring market functionality and its implications for the food security of the Iraqi population. A snapshot of the current situation is presented in the below dashboard².

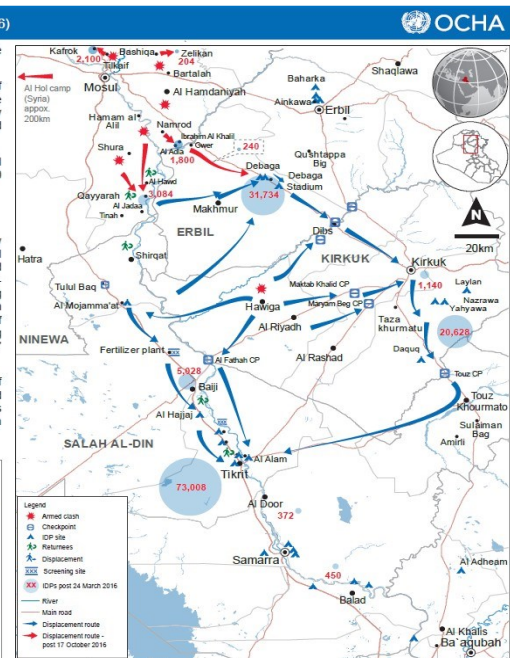
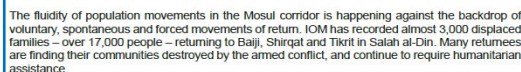
Iraq: Mosul corridor displacement overview (as of 24 October 2016)

Military operations to retake Mosul city, which has been held by the Islamic State of Iraq and the Levant (ISIL) since 2014, began on 17 October.

About 7,400 people have been displaced in the first days of the military operation. The majority of families have fled southwards towards Qayyarah, within Tilkeif district, to Zelikan camp in the north-east, and to Debaga camp in the south-east. In addition, about 900 people have reportedly crossed into Syria, where they are being housed in Al Hol camp in Hassakeh. Displacement and return patterns remain fluid as the conflict moves towards Mosul city.

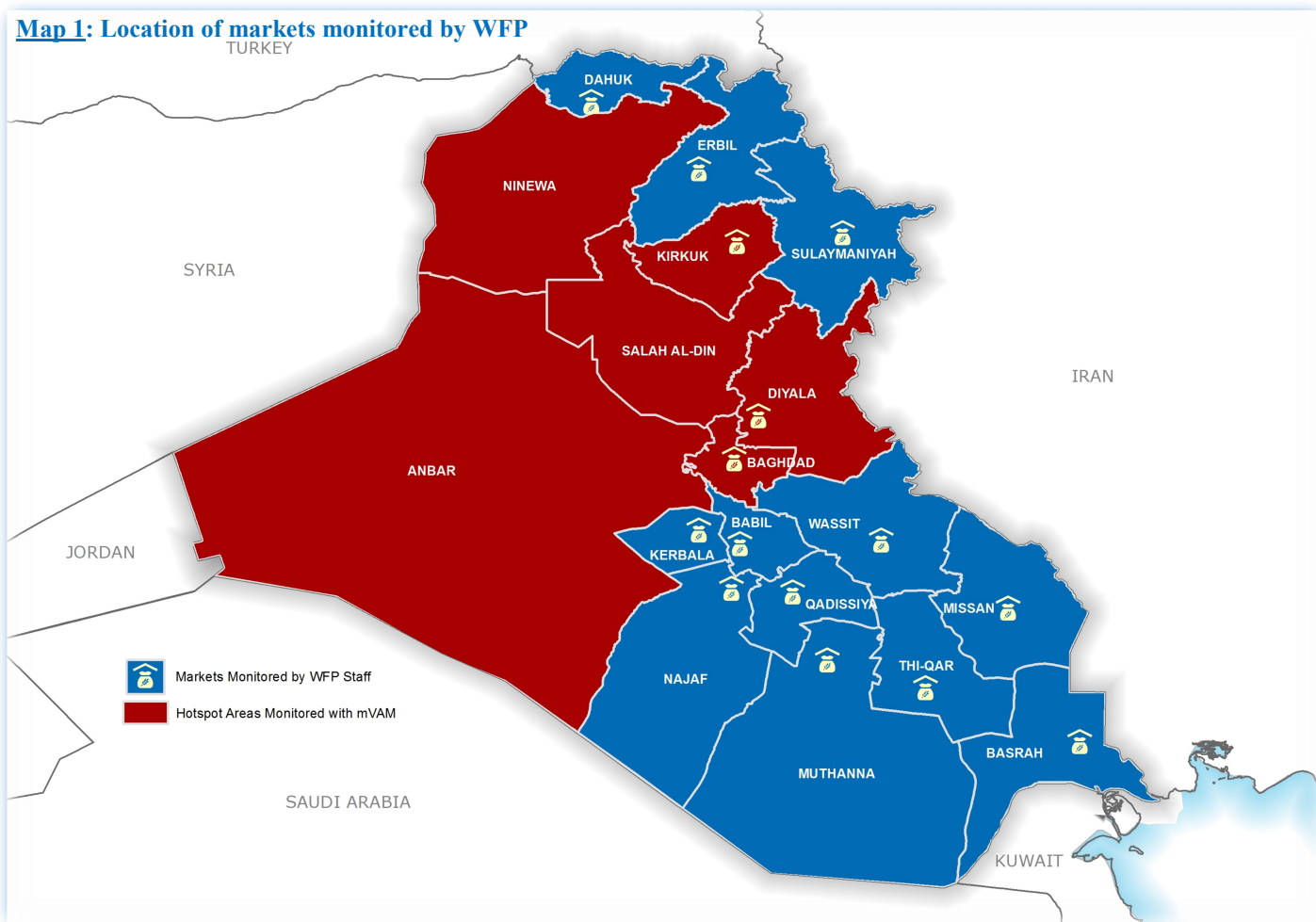
These latest displacements from Mosul are part of a wider pattern of displacement along the Mosul corridor that started at the end of March 2016 and intensified in mid-June. This year, about 140,000 people have been, and remain, displaced along the Mosul corridor.

140,000 people currently displaced along the Mosul corridor since 24 March



¹ WFP Rapid Market Assessment in Salh Al-Din governorate

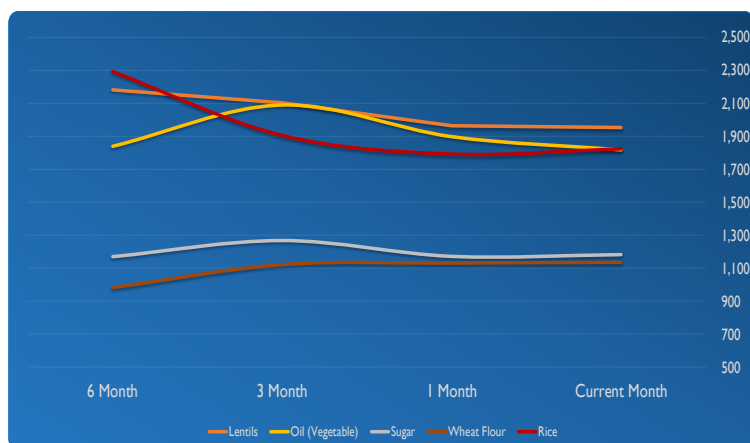
² OCHA - Iraq: Humanitarian Snapshot (October 24, 2016)

Map 1: Location of markets monitored by WFP

Food National Price Trends

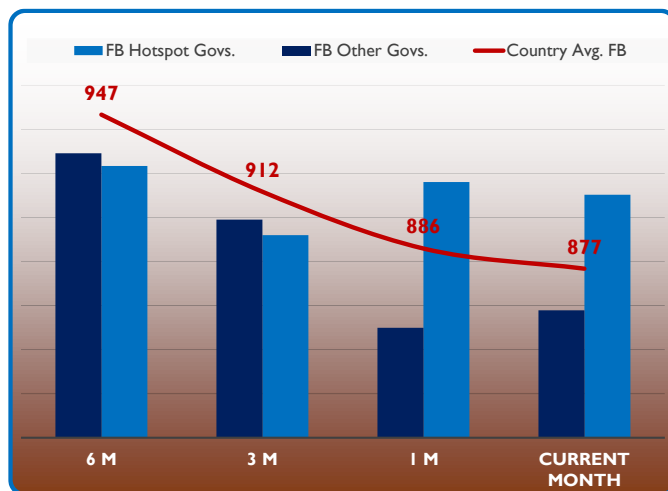
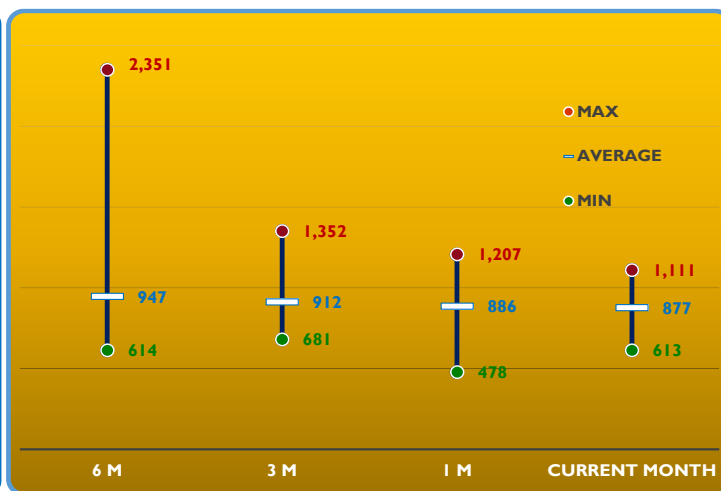
The prices of the main food commodities in August have overall slightly increased in September after three months of decreasing trend started in June. Prices of single main commodities have behaved differently at national level (Chart 1). The cost of the minimum food basket has behaved very differently amongst

Chart 1: Price Trend of Main Food Commodities (in IQD/Unit)



governorates though. In Anbar the prices of main food items have overall decreased by 15% from August 2016 and in Thi-Qar by 13%. Higher decrease was registered in Sulaimaniyah (-24%). The trend has been positive (lower costs) for the sixth month on a row, showing how markets are recovering from the conflict and the subsequent liberation of the areas from IS. On the other hand Kirkuk (+25%) and Wassit (+43%) have registered a concerning increase of the cost of the minimum food basket. The national average

absorbs these hikes and only registers a decrease of 1% (Chart 2). Regarding staple commodities, no main changes have been registered on a national scale with vegetable oil being the commodity with higher change from the previous month (-4%). Nevertheless the price of some commodities is very different from governorate to governorate. For instance the cost of sugar has increase by 38% in Qadisya, while decreasing by 45% in Sulaimaniyah, picturing an opposite situation from previous month. This to confirm that market integration

Chart 2: Cost of Minimum Food Basket (in IQD)**Chart 3: Min. vs. Max. Cost of Food Basket (in IQD)**

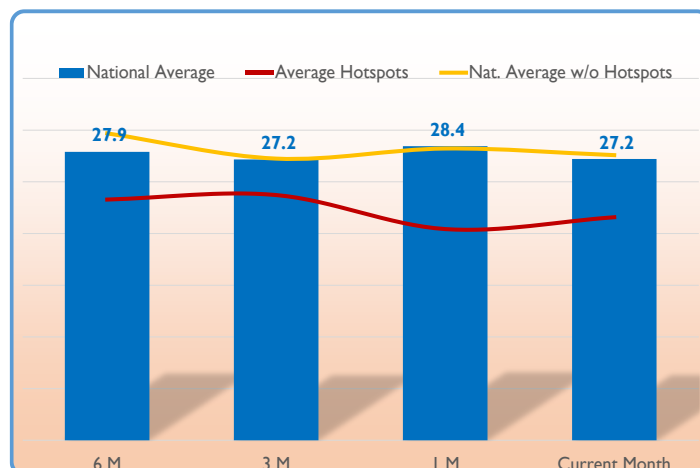
across the country is still very low, yet slowly improving (Chart 3). Regarding vegetable oil, it was found to be 29% more expensive in Kirkuk. Meat which on average is only 2% higher than last month, was found to be much cheaper in Salah Al-Din (-28%) and Dohuk (-10%). Lentils have been found cheaper this month compared to August, especially in Anbar (-13%), Ninewa (-8%) and Dohuk (-7%). On the other hand the same food item is more expensive in Kirkuk (+12%) and Salah Al-Din (+7%). Onion's price is also very different across governorates. It was indeed found to be cheaper in Sulaimaniyah (-38%) while highly increased in Muthana (+38%), Missan (+33%), Basrah (+33%), Babylon (+25%) and Qadisiya (+25%). Details by commodity and by governorate are presented in Annex 1 and Annex 2.

As showed in Chart 2 above, the cost of the food basket is still higher in hotspot locations where on average a food basket price is 6% higher than in the rest of the country. Nevertheless there is a convergence, due mostly to the high increase of the food basket cost in non-hard to reach areas while a slight decrease is registered for hotspot locations where districts that were under control of IS have been slowly but steady recovering from the occupation.

It has also to be taken into consideration that averages don't include location where food commodities have been reported as not available (see Methodology).

Unskilled Labor Wages and Term of Trade (ToT)

The wage of unskilled labor has resumed rising in hotspot locations after two months of decreasing trend, while it is stabilizing in the rest of the country. Despite the convergence, the difference remains huge. On average an unskilled worker's wage is 24% lower in hotspot areas compared to the other governorates.

Chart 4: Cost of Unskilled Labor per day (in IQD)**Chart 5: Wage-to-Food Terms of Trade (in food baskets/day)**

Looking at governorate level, Babylon and Qadissiya still register the highest daily wages at IQD 30,000, while Erbil offers the lowest daily stipends (IQD 12,000). A relevant decrease of wages was recorded in September in Sulaimaniyah (-17%) while significant increases were recorded in most of the hard-to-reach areas (Chart 5).

Focus on Hard to Reach Areas

Hard to reach areas are locations widespread in six governorates (Anbar, Baghdad, Diyala, Kirkuk, Ninewa and Salah Al-Din) where WFP complements its traditional data collection with mVAM methodology. When looking in details at these governorates, the food basket cost in the last six months has followed different trends within the six areas and compared to the rest of the country. In Anbar it has decreased for the last six months and dropped by 15% in September 2016 only. Similar trend is registered to a smaller extend in Baghdad and Ninewa. On the other hand, Kirkuk has registered a constant increase in the last six months, while Diyala has changed the decreasing trend of the previous month with a minor increase in September 2016 (Chart 6).

Chart 6: Cost of Food Basket in Hotspot Areas (in IQD)

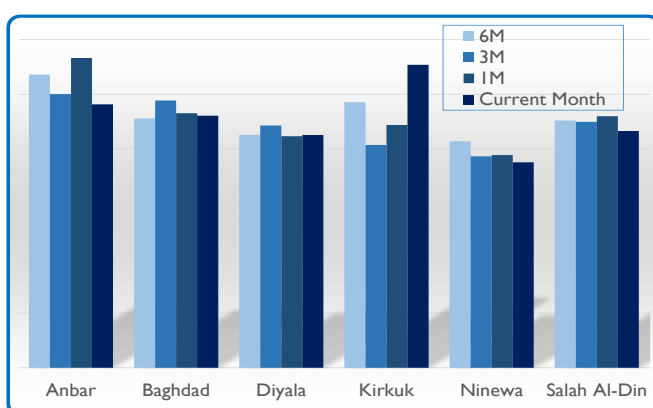
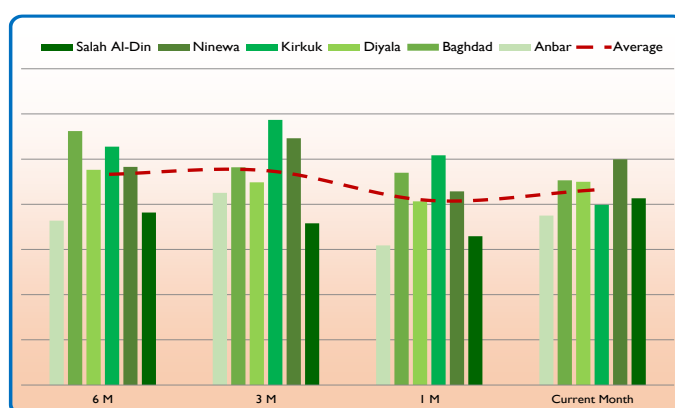


Chart 7: Wage-to-Food ToT in Hotspot Areas



The cost of the food basket affected the wage-to-food ToT, which has increased in Anbar (18.8), Diyala (22.5), Ninewa (25) and Salah Al-Din (20.7). Differently Kirkuk (20) and Baghdad (22.7) have seen a decrease in the purchasing power of unskilled laborers (Chart 7).

Chart 8: Food Availability Analysis in Anbar

Governorate	Commodity	Alkhalidiyah	Alqalam	Falluja	Haditha	Heet	Ramadi	Amiriyat al-Fallujah	Al-Rutba
Anbar	Oil (Vegetable)	AV	NA	SAV	AV	WAD	AV	AV	AV
	Onion	AV	NA	SAV	AV	WAD	AV	AV	AV
	Rice	AV	NA	SAV	AV	WAD	AV	AV	AV
	Sugar	AV	NA	SAV	AV	WAD	AV	AV	AV
	Wheat Flour	AV	NA	SAV	AV	WAD	AV	AV	AV

In conflict affected and occupied areas, food availability is the most crucial issue. In Falluja and Alqalam key informants reported that food is still unavailable or scarcely available. Other districts in Anbar seem to have been recovering after the liberation from IS forces (Chart 8). Key informants have indeed reported several times that no food is available. In Salah Al-Din the isolation of Shirqat is

still evident. Most of staple commodities are not found in the market. mVAM respondents were still sending worrisome messages in the first weeks of the month, reporting that the city was sieged and people were getting killed. In the last week though, when the Iraqi forces liberated the city, key informants reported that they are receiving food from army to compensate lack of market supply. It has also to be highlighted that PDS has not been delivered in these areas for months.

Chart 9: Food Availability Analysis in Salah Al-Din

Governorate	Commodity	Al-Qadisiyah	Balad	Beigy	Samarra	Tikrit	Shirqat
Salah Al-Din	Oil (Vegetable)	AV	AV	AV	AV	AV	NA
	Onion	AV	AV	AV	AV	AV	MNA
	Rice	AV	AV	AV	AV	AV	NA
	Sugar	AV	AV	AV	AV	AV	SAV
	Wheat Flour	AV	AV	AV	AV	AV	SAV

Methodology

Market information is collected on weekly basis by WFP field monitors. Additionally WFP in partnership with Islamic Relief Worldwide (IRW) collects market data remotely through mVAM technology from key informants in those governorates where access is restricted, using telephone interviews. Data are then cleaned and consolidated. Monthly averages are used for the Iraq Monthly Monitor Report. Map 1 shows the location of the WFP monitored markets as well as the hard to reach areas monitored through mVAM.

Field monitors collect prices for 23 food commodities, 3 fuel items, 7 hygiene commodities and the cost of unskilled labor for one day of work. WFP field monitors cover 12 governorates where access is not restricted plus three additional governorates (Kirkuk, Baghdad and Diyala) when the security situation allows. IRW key informants collect market prices of 8 main food commodities and the daily wage of unskilled labor from six hard to reach areas in central and northern governorates of Iraq (Anbar, Baghdad, Diyala, Kirkuk, Ninewa and Salh Al-Din) through mVAM technology .

The report is based on the analyses produced by the Integrated Market Surveillance Tool (IMST). The IMST is an agile market monitoring tool that was developed for Iraq Country Office (CO) and is aimed at storing raw data collected by field monitors and key informants, and creating contextualized analyses. The tool analyzes trends of main food and non-food commodities, minimum food basket, and provides an indication about how much the markets are integrated within and across governorates. Food and non-food prices are analyzed against previous periods, including key baselines, such as the pre-crisis values of February 2015. Non-food items prices are not reported in this report unless a change in the price level has an impact on food security.

The IMST also includes information regarding the availability of main food commodities in hotspot locations, which is collected by key informants. The classification of the availability is based on the monthly averages. A commodity is classified as **Available** when it is found available on every visit in the key market of a specific governorate; **Widely Available** when for only one visit the availability is not full; **Sporadically Available** when in at least half of the visits, the commodity is recorded as rare in the market; a commodity is **Mostly Not Available** when it was found only in rare cases in a governorate during the analyzed month; finally a commodity is classified as **Not Available** when it is not found in any market of a governorate at any time.

AV	Available
WAD	Widely Available
SAV	Sporadically Available
MNA	Mostly Not Available
NA	Not Available

The minimum food basket monitored by WFP contains five food commodities. The quantities are adjusted against the survival caloric intake needs. The five commodities are wheat flour, sugar, rice, vegetable oil and onion.

The IMST also provides specific and customizable analyses on hotspot areas, with district and sub-district level information. This allows to detect local issues regarding market price, availability as well as any other information regarding the specific market catchment area, including security and coping mechanism commonly adopted in the area. Given the unstable context the IMST is flexible enough to allow ad hoc analysis whenever required.

The Iraq Market Monitor Report is issued since August 2016 on a monthly basis.

NOTE: Due to the long-lasting conflict in Falluja and the related impact on markets, to avoid distortions on average price analyses by governorate and maintain consistency over time, the Falluja district has been removed from all analysis related to Anbar. Falluja's information and data are analyzed aside in district-level analyses.

Annex 1: Market Prices by Governorate

Market	Commodity	Current Month	Price Data in Previous Periods			% Change from Stated Period			Direction of change		
		Current Month	Periods			Period			Period		
			1 Month	3 Month	6 Month	1 Month	3 Month	6 Month	1 Month	3 Month	6 Month
Anbar	Fresh Milk	1,895	1,979	2,175		-4%	-13%		→	→	→
	Lentils	1,887	2,167	2,208	2,255	-13%	-15%	-16%	→	→	→
	Meat (Beef)	13,860	13,917	13,708		0%	1%		→	→	→
	Oil (Vegetable)	2,217	2,936	2,059	2,332	-7%	8%	-5%	→	→	→
	Onion	785	991	997		-16%	-21%		→	→	→
	Rice	1,777	2,424	1,929	2,153	-27%	-8%	-17%	→	→	→
	Sugar	1,337	1,417	1,441	1,444	-6%	-7%	-7%	→	→	→
	Wheat Flour	1,512	1,507	1,445	1,489	0%	5%	2%	→	→	→
Babylon	Fresh Milk	2,000	2,000	2,000	2,000	0%	0%	0%	→	→	→
	Lentils	2,000	2,000	2,000	2,000	0%	0%	0%	→	→	→
	Meat (Beef)	13,000	13,000	13,000	14,000	0%	0%	-7%	→	→	→
	Oil (Vegetable)	2,250	2,250	2,125	2,500	0%	6%	-10%	→	→	→
	Onion	938	750	813	750	25%	15%	25%	→	→	→
	Rice	1,500	1,500	1,063	1,000	0%	41%	50%	→	→	→
	Sugar	1,375	1,000	1,000	750	38%	38%	83%	→	→	→
	Wheat flour	1,000	1,000	1,000	1,000	0%	0%	0%	→	→	→
Baghdad	Fresh Milk	1,925	1,787	1,926		8%	0%		→	→	→
	Lentils	1,888	1,985	2,147	2,125	-5%	-12%	-11%	→	→	→
	Meat (Beef)	13,675	13,515	13,941		1%	-2%		→	→	→
	Oil (Vegetable)	1,800	1,665	1,868	2,094	8%	-4%	-14%	→	→	→
	Onion	745	772	868		-4%	-14%		→	→	→
	Rice	1,975	1,971	2,015	2,070	0%	-2%	-5%	→	→	→
	Sugar	1,275	1,309	1,301	1,203	-3%	-2%	6%	→	→	→
	Wheat Flour	1,150	1,184	1,213	1,227	-3%	-5%	-6%	→	→	→
Basrah	Fresh Milk	4,000	4,000	6,000	6,000	0%	-33%	-33%	→	→	→
	Lentils	2,000	2,000	2,000	2,000	0%	0%	0%	→	→	→
	Meat (Beef)	13,000	13,000	14,000	14,000	0%	-7%	-7%	→	→	→
	Oil (Vegetable)	1,500	1,500	2,000	2,000	0%	-25%	-25%	→	→	→
	Onion	750	563	500	750	33%	50%	0%	→	→	→
	Rice	2,000	2,000	2,000	2,000	0%	0%	0%	→	→	→
	Sugar	1,000	1,000	1,000	1,000	0%	0%	0%	→	→	→
	Wheat flour	1,000	1,000	1,000	1,000	0%	0%	0%	→	→	→
Diyala	Fresh Milk	1,550	1,644	1,438		-6%	8%		→	→	→
	Lentils	1,683	1,700	1,847	1,438	-1%	-9%	17%	→	→	→
	Meat (Beef)	13,200	13,050	13,091		1%	1%		→	→	→
	Oil (Vegetable)	1,875	1,844	2,045	1,840	2%	-8%	2%	→	→	→
	Onion	607	643	672		-6%	-10%		→	→	→
	Rice	1,892	1,888	1,920	1,861	0%	-1%	2%	→	→	→
	Sugar	1,075	1,006	1,057	1,000	7%	2%	8%	→	→	→
	Wheat Flour	1,117	1,050	1,261	1,114	6%	-11%	0%	→	→	→
Dohuk	Fresh Milk	1,938	1,663	1,750	1,938	17%	11%	0%	→	→	→
	Lentils	1,821	1,963	2,000	2,000	-7%	-9%	-9%	→	→	→
	Meat (Beef)	10,736	15,000	15,000	15,063	-28%	-28%	-29%	→	→	→
	Oil (Vegetable)	1,438	1,538	1,750	1,850	-7%	-18%	-22%	→	→	→
	Onion	625	613	750	1,250	2%	-17%	-50%	→	→	→
	Rice	1,861	1,788	1,825	1,925	4%	2%	-3%	→	→	→
	Sugar	1,000	788	838	925	27%	19%	8%	→	→	→
	Wheat flour	875	900	875	913	-3%	0%	-4%	→	→	→
Erbil	Fresh Milk	1,750	1,750	2,000	2,000	0%	-13%	-13%	→	→	→
	Lentils	1,500	1,500	2,250	2,000	0%	-33%	-25%	→	→	→
	Meat (Beef)	16,000	16,000	15,000	15,000	0%	7%	7%	→	→	→
	Oil (Vegetable)	1,500	1,500	2,000	1,750	0%	-25%	-14%	→	→	→
	Onion	750	750	1,250	1,250	0%	-40%	-40%	→	→	→
	Rice	2,500	2,500	1,700	8,500	0%	47%	-71%	→	→	→
	Sugar	1,000	1,000	1,250	1,250	0%	-20%	-20%	→	→	→
	Wheat flour	1,000	1,000	1,100	1,000	0%	-9%	0%	→	→	→
Kerbala	Fresh Milk	2,000	2,000	2,000	2,000	0%	0%	0%	→	→	→
	Lentils	2,000	2,000	2,250	2,250	0%	-11%	-11%	→	→	→
	Meat (Beef)	16,000	16,000	16,000	16,000	0%	0%	0%	→	→	→
	Oil (Vegetable)	2,500	2,500	2,500	2,500	0%	0%	0%	→	→	→
	Onion	1,000	1,000	875	1,000	0%	14%	0%	→	→	→
	Rice	2,000	2,000	2,000	2,250	0%	0%	-11%	→	→	→
	Sugar	1,250	1,250	1,500	1,500	0%	-17%	-17%	→	→	→
	Wheat flour	1,250	1,250	1,250	1,250	0%	0%	0%	→	→	→
Kirkuk	Fresh Milk	1,887	1,443	1,560		31%	21%		→	→	→
	Lentils	1,352	1,651	1,512	1,378	-18%	-11%	-2%	→	→	→
	Meat (Beef)	13,419	13,205	12,905		2%	4%		→	→	→
	Oil (Vegetable)	3,629	2,352	1,637	1,894	54%	122%	92%	→	→	→
	Onion	1,048	682	613		54%	71%		→	→	→
	Rice	1,843	2,107	1,810	1,944	-13%	2%	-5%	→	→	→
	Sugar	2,525	1,552	1,143	1,264	63%	121%	100%	→	→	→
	Wheat Flour	3,417	1,835	1,036	1,251	86%	230%	173%	→	→	→

Market	Commodity	Current Month	Price Data in Previous Periods			% Change from Stated Period			Direction of change		
		Current Month	Periods			Period			Period		
			1 Month	3 Month	6 Month	1 Month	3 Month	6 Month	1 Month	3 Month	6 Month
Missan	Fresh Milk	4,000	4,000	2,438	6,000	0%	64%	-33%	→	→	→
	Lentils	2,000	2,000	2,500	2,000	0%	-20%	0%	→	→	→
	Meat (Beef)	14,000	14,000	16,625	14,000	0%	-16%	0%	→	→	→
	Oil (Vegetable)	1,500	1,500	3,188	1,500	0%	-53%	0%	→	→	→
	Onion	750	563	1,563	750	33%	-52%	0%	→	→	→
	Rice	2,000	2,000	2,875	2,000	0%	-30%	0%	→	→	→
	Sugar	1,000	1,000	2,000	1,000	0%	-50%	0%	→	→	→
	Wheat flour	1,000	1,000	1,750	1,000	0%	-43%	0%	→	→	→
Muthana	Fresh Milk	1,500	1,500	1,500		0%	0%		→	→	→
	Lentils	2,000	2,000	1,813	2,250	0%	10%	-11%	→	→	→
	Meat (Beef)	7,500	7,500	13,000	14,000	0%	-42%	-46%	→	→	→
	Oil (Vegetable)	1,750	1,750	1,500	1,500	0%	17%	17%	→	→	→
	Onion	688	500	750	750	38%	-8%	-8%	→	→	→
	Rice	2,000	2,000	2,000	2,000	0%	0%	0%	→	→	→
	Sugar	1,000	1,000	1,000	1,100	0%	0%	-9%	→	→	→
	Wheat flour	1,250	1,250	750	750	0%	67%	67%	→	→	→
Najaf	Fresh Milk	3,000	3,000	3,000	3,000	0%	0%	0%	→	→	→
	Lentils	1,813	1,813	2,125	2,000	0%	-15%	-9%	→	→	→
	Meat (Beef)	15,000	15,000	15,000	15,000	0%	0%	0%	→	→	→
	Oil (Vegetable)	1,750	1,750	1,750	1,750	0%	0%	0%	→	→	→
	Onion	750	750	750	750	0%	0%	0%	→	→	→
	Rice	2,500	2,438	2,250	2,250	3%	11%	11%	→	→	→
	Sugar	1,500	1,500	1,500	1,500	0%	0%	0%	→	→	→
	Wheat flour	1,500	1,500	500	500	0%	200%	200%	→	→	→
Ninewa	Fresh Milk	1,471	1,480	1,513		-1%	-3%		→	→	→
	Lentils	1,433	1,375	1,685	1,634	4%	-15%	-12%	→	→	→
	Meat (Beef)	11,423	11,842	12,774		-4%	-11%		→	→	→
	Oil (Vegetable)	1,606	1,651	1,676	1,662	-3%	-4%	-3%	→	→	→
	Onion	644	637	762		1%	-15%		→	→	→
	Rice	1,569	1,566	1,640	1,746	0%	-4%	-10%	→	→	→
	Sugar	1,010	1,000	1,071	1,014	1%	-6%	0%	→	→	→
	Wheat Flour	1,058	1,039	982	1,098	2%	8%	-4%	→	→	→
Qadisiya	Fresh Milk	2,000	2,000	2,000	2,000	0%	0%	0%	→	→	→
	Lentils	2,000	2,000	2,250	2,000	0%	-11%	0%	→	→	→
	Meat (Beef)	13,000	13,000	13,000	15,000	0%	0%	-13%	→	→	→
	Oil (Vegetable)	2,250	2,250	2,500	2,500	0%	-10%	-10%	→	→	→
	Onion	938	750	875	875	25%	7%	7%	→	→	→
	Rice	1,500	1,500	1,500	1,000	0%	0%	50%	→	→	→
	Sugar	1,375	1,000	813	750	38%	69%	83%	→	→	→
	Wheat flour	1,000	1,000	1,000	750	0%	0%	33%	→	→	→
Salah Al-Din	Fresh Milk	1,536	1,493	1,511		3%	2%		→	→	→
	Lentils	1,879	1,914	2,207	1,813	-2%	-15%	4%	→	→	→
	Meat (Beef)	12,459	12,564	12,761		-1%	-2%		→	→	→
	Oil (Vegetable)	1,750	1,750	1,935	1,888	0%	-10%	-7%	→	→	→
	Onion	614	612	701		0%	-12%		→	→	→

Annex 2: Market Prices by Commodity

Commodity	Market	Current Month	Price Data in Previous Periods			% Change from Stated Period			Direction of change		
			Current Month			1 Month 3 Month 6 Month			1 Month 3 Month 6 Month		
			1 Month	3 Month	6 Month	1 Month	3 Month	6 Month	1 Month	3 Month	6 Month
Fresh Milk	National Average	2,441	2,454	2,530	3,403	-1%	-4%	-28%	↓	↓	↓
	Anbar	1,895	1,979	2,175		-1%	-13%		↓	↓	↓
	Babylon	2,000	2,000	2,000	2,000	0%	0%	0%	↓	↓	↓
	Baghdad	1,787	1,792	1,694		0%	5%		↓	↓	↓
	Bashra	4,000	4,000	4,000	4,000	0%	-33%	-33%	↓	↓	↓
	Diwala	1,644	1,554	1,675		6%	-2%		↓	↓	↓
	Dohuk	1,938	1,663	1,750		17%	11%	0%	↓	↓	↓
	Erbil	1,750	1,750	2,000	2,000	0%	-13%	-13%	↓	↓	↓
	Kerbala	2,000	2,000	2,000	2,000	0%	0%	0%	↓	↓	↓
	Kirkuk	1,444	1,550	1,910		-7%	9%		↓	↓	↓
	Missan	4,000	4,000	2,438	4,000	0%	64%	-33%	↓	↓	↓
	Muthana	1,500	1,500	1,500	1,500	0%	0%	0%	↓	↓	↓
	Najaf	3,000	3,000	3,000	3,000	0%	0%	0%	↓	↓	↓
	Ninewa	1,480	1,510	1,658		-2%	-11%		↓	↓	↓
	Qadisiya	2,000	2,000	2,000	2,000	0%	0%	0%	↓	↓	↓
	Salah Al-Din	1,493	1,711	1,642		5%	-9%		↓	↓	↓
	Sulaimaniyah	2,000	2,500	2,438	2,500	-20%	-18%	-20%	↓	↓	↓
	Thi Qar	5,000	5,000	5,250	5,000	0%	-5%	0%	↓	↓	↓
	Wassit	5,000	5,000	5,000	5,000	0%	0%	0%	↓	↓	↓

Commodity	Market	Current Month	Price Data in Previous Periods			% Change from Stated Period			Direction of change		
			Current Month			1 Month 3 Month 6 Month			1 Month 3 Month 6 Month		
			1 Month	3 Month	6 Month	1 Month	3 Month	6 Month	1 Month	3 Month	6 Month
Lentils	National Average	1,953	1,944	2,102	2,180	-1%	-7%	-10%	↓	↓	↓
	Anbar	1,887	2,167	2,208	2,355	-13%	-15%	-16%	↓	↓	↓
	Babylon	2,000	2,000	2,000	2,000	0%	0%	0%	↓	↓	↓
	Baghdad	1,985	2,021	2,161	2,097	-2%	-8%	-5%	↓	↓	↓
	Bashra	2,000	2,000	2,000	2,000	0%	0%	0%	↓	↓	↓
	Diwala	1,700	1,634	1,614	1,594	4%	5%	-48%	↓	↓	↓
	Dohuk	1,821	1,963	2,000	2,000	-7%	-9%	-9%	↓	↓	↓
	Erbil	1,500	1,500	2,250	2,000	0%	-33%	-25%	↓	↓	↓
	Kerbala	2,000	2,000	2,250	2,250	0%	-11%	-11%	↓	↓	↓
	Kirkuk	1,651	1,500	1,500	1,984	12%	15%	-17%	↓	↓	↓
	Missan	2,000	2,000	2,500	2,000	0%	-20%	0%	↓	↓	↓
	Muthana	2,000	2,000	1,813	2,350	0%	10%	-11%	↓	↓	↓
	Najaf	1,813	1,813	2,125	2,000	0%	-15%	-9%	↓	↓	↓
	Ninewa	1,715	1,490	1,722	1,904	-8%	-20%	-28%	↓	↓	↓
	Qadisiya	2,000	2,000	2,250	2,000	0%	-11%	0%	↓	↓	↓
	Salah Al-Din	1,914	1,781	1,950	1,750	7%	-2%	13%	↓	↓	↓
	Sulaimaniyah	2,500	2,500	2,500	2,750	0%	-9%		↓	↓	↓
	Thi Qar	2,500	2,500	2,425	2,500	0%	-5%	0%	↓	↓	↓
	Wassit	2,500	2,500	2,438	2,250	0%	3%	11%	↓	↓	↓

Commodity	Market	Current Month	Price Data in Previous Periods			% Change from Stated Period			Direction of change		
			Current Month			1 Month 3 Month 6 Month			1 Month 3 Month 6 Month		
			1 Month	3 Month	6 Month	1 Month	3 Month	6 Month	1 Month	3 Month	6 Month
Meat (Beef)	National Average	13,071	13,395	13,843	16,445	-2%	2%	15%	↓	↓	↓
	Anbar	13,840	13,917	13,708		0%	1%		↓	↓	↓
	Babylon	13,000	13,000	13,000	14,000	0%	0%	-7%	↓	↓	↓
	Baghdad	13,515	13,688	13,130	1,798	-1%	3%	652%	↓	↓	↓
	Bashra	13,000	13,000	14,000	14,000	0%	-7%	-7%	↓	↓	↓
	Diwala	13,050	13,179	13,739	1,906	-1%	-5%	585%	↓	↓	↓
	Dohuk	10,736	15,000	15,000	15,063	-28%	-28%	-29%	↓	↓	↓
	Erbil	16,000	16,000	15,000	15,000	0%	7%	7%	↓	↓	↓
	Kerbala	16,000	16,000	16,000	16,000	0%	0%	0%	↓	↓	↓
	Kirkuk	13,205	12,967	12,759	1,340	2%	3%	885%	↓	↓	↓
	Missan	14,000	14,000	14,000	14,000	0%	-16%	0%	↓	↓	↓
	Muthana	15,000	15,000	13,000	14,000	0%	-42%	-46%	↓	↓	↓
	Najaf	15,000	15,000	15,000	15,000	0%	0%	0%	↓	↓	↓
	Ninewa	11,842	12,083	12,684	2,171	-2%	-7%	445%	↓	↓	↓
	Qadisiya	13,000	13,000	13,000	15,000	0%	0%	-13%	↓	↓	↓
	Salah Al-Din	12,544	12,030	11,900	11,900	4%	6%	965%	↓	↓	↓
	Sulaimaniyah	15,000	16,250	16,425	16,500	-10%	-10%	-9%	↓	↓	↓
	Thi Qar	12,000	12,000	12,000	12,000	0%	0%	0%	↓	↓	↓
	Wassit	12,000	12,000	12,000	12,000	0%	0%	0%	↓	↓	↓

Commodity	Market	Current Month	Price Data in Previous Periods			% Change from Stated Period			Direction of change		
			Current Month			1 Month 3 Month 6 Month			1 Month 3 Month 6 Month		
			1 Month	3 Month	6 Month	1 Month	3 Month	6 Month	1 Month	3 Month	6 Month
Oil (Vegetable)	National Average	1,818	1,898	2,088	1,839	-4%	-12%	-1%	↓	↓	↓
	Anbar	2,217	2,374	2,059	2,337	-7%	8%	5%	↓	↓	↓
	Babylon	2,250	2,250	2,125	2,000	0%	6%	-10%	↓	↓	↓
	Baghdad	1,665	1,813	1,935	1,954	-8%	12%	52%	↓	↓	↓
	Bashra	1,500	1,500	2,000	2,000	0%	-25%	-25%	↓	↓	↓
	Diwala	1,844	1,911	1,917	1,189	-4%	-4%	55%	↓	↓	↓
	Dohuk	1,418	1,538	1,750	1,850	-7%	-18%	-22%	↓	↓	↓
	Erbil	1,500	1,500	2,000	1,750	0%	-25%	-14%	↓	↓	↓
	Kerbala	2,500	2,500	2,500	2,500	0%	0%	0%	↓	↓	↓
	Kirkuk	2,352	1,825	1,603	1,114	29%	47%	111%	↓	↓	↓
	Missan	1,500	1,500	1,500	1,500	0%	-53%	0%	↓	↓	↓
	Muthana	1,750	1,750	1,750	1,500	0%	17%	17%	↓	↓	↓
	Najaf	1,750	1,750	1,750	1,750	0%	0%	0%	↓	↓	↓
	Ninewa	1,651	1,677	1,713	1,188	-2%	-4%	39%	↓	↓	↓
	Qadisiya	2,250	2,250	2,500	2,500	0%	-10%	-10%	↓	↓	↓
	Salah Al-Din	1,750	1,750	1,859		0%	-6%		↓	↓	↓
	Sulaimaniyah	1,813	2,120	2,168	2,500	-44%	-43%	-28%	↓	↓	↓
	Thi Qar	1,500	1,500	2,000	2,000	0%	-25%	-25%	↓	↓	↓
	Wassit	1,500	1,500	2,000	2,000	0%	-25%	-25%	↓	↓	↓

Commodity	Market	Current Month	Price Data in Previous Periods			% Change from Stated Period			Direction of change		
			Current Month			1 Month 3 Month 6 Month			1 Month 3 Month 6 Month		
			1 Month	3 Month	6 Month	1 Month	3 Month	6 Month	1 Month	3 Month	6 Month
Onion	National Average	782	776	895	974	1%	-13%	-20%	↓	↓	↓
	Anbar	785	931	997		-16%	21%		↓	↓	↓
	Babylon	938	750	813		25%	15%	25%	↓	↓	↓
	Baghdad	772	807	913		-4%	-15%		↓	↓	↓
	Bashra	750	563	500	750	33%	50%	0%	↓	↓	↓
	Diwala	643	625	813		3%	-21%		↓	↓	↓
	Dohuk	625	613	750	1,250	2%	-17%	-50%	↓	↓	↓
	Erbil	750	750	1,250	1,250	0%	-40%	-40%	↓	↓	↓
	Kerbala	1,000	1,000	875	1,000	0%	14%	0%	↓	↓	↓
	Kirkuk	682	658	400		4%	49%		↓	↓	↓
	Missan	750	563	500	750	33%	-52%	0%	↓	↓	↓
	Muthana	688	750	750	750	38%	-8%	-8%	↓	↓	↓
	Najaf	750	750	750	750	0%	0%	0%	↓	↓	↓
	Ninewa	637	750	750	750	-15%	-17%		↓	↓	↓
	Qadisiya	938	750	875	875	7%	7%	7%	↓	↓	↓
	Salah Al-Din	573	576	675		6%	-9%		↓	↓	↓
	Sulaimaniyah	813	1,113	1,263	1,500	-38%	-48%	-46%	↓	↓	↓
	Thi Qar	1,000	1,063	875	1,000	-6%	14%	0%	↓	↓	↓
	Wassit	938	1,000	938	1,063	-6%	0%	-12%	↓	↓	↓

Commodity	Market	Current	Price Data in Previous			% Change from			Direction of change		
		Month	Periods			Stated Period			(in %)		
		Current Month	1 Month	3 Month	6 Month	1 Month	3 Month	6 Month	1 Month	3 Month	6 Month
Rice	National Average	1,824	1,922	1,905	2,291	-5%	-4%	-20%	↓	↓	↓
	Anbar	1,777	2,424	1,929	2,153	-27%	-8%	-17%	↓	↓	↓
	Babylon	1,500	1,500	1,500	1,500	0%	41%	50%	↓	↓	↓
	Baghdad	1,971	1,958	2,048		1%	-4%		↓	↓	↓
	Bashra	2,000	2,000	2,000	2,000	0%	0%	0%	↓	↓	↓
	Diylala	1,888	1,741	1,841		8%	3%		↓	↓	↓
	Dohuk	1,861	1,788	1,825	1,925	4%	2%	-3%	↓	↓	↓
	Erbil	2,500	2,500	1,700	8,500	0%	47%	-71%	↓	↓	↓
	Kerbala	2,000	2,000	2,000	2,250	0%	0%	-11%	↓	↓	↓
	Kirkuk	2,107	2,017	1,808		4%	17%		↓	↓	↓
	Missan	2,000	2,000		2,000	0%	-30%	0%	↓	↓	↓
	Muthana	2,000	2,000	2,000	2,000	0%	0%	0%	↓	↓	↓
	Najaf	2,500	2,438	2,250	2,250	3%	11%	11%	↓	↓	↓
	Ninewa	1,566	1,610	1,637		-3%	-4%		↓	↓	↓
Qadisiya	1,500	1,500	1,500		0%	0%	50%	↓	↓	↓	
Salah Al-Din	1,914	2,030	1,848		-6%	4%		↓	↓	↓	
Sulaimaniyah	2,000	2,050		1,800	-27%	-30%	11%	↓	↓	↓	
Thi Qar	1,000	1,400	1,250	1,250	-36%	-46%	-40%	↓	↓	↓	
Wasit	1,000	1,688	1,650	1,650	-14%	-41%	-39%	↓	↓	↓	