



Issue No. 4
November 2016

IRAQ Market Monitor Report

[Click here to read the report online](#)

Highlights

- In Anbar returns continue in Falluja and Ramadi. Markets have responded well to the returns in Falluja and Ramadi, while are stressed in Kirkuk due to the increase of IDPs.
- The cost of the food basket is stable at national level. However, a sharp increase was registered in Kirkuk (52%) where the increased demand from IDPs, coupled with high prices in Hawija, has brought food prices to record highs.
- The purchasing power of population living in hotspot locations is 20% lower compared to the rest of the country. The trend shows a divergence, indicating further isolation of markets in hard-to-reach areas.
- Food is now available in most of the country, including retaken areas of Mosul. The high prices in Hawija make food inaccessible for the most vulnerable.

Contacts

Sally Haydock
sally.haydock@wfp.org

Maha Ahmed
maha.ahmed@wfp.org

Asif Niazi
asif.niazi@wfp.org

Filippo Minozzi
filippo.minozzi@wfp.org

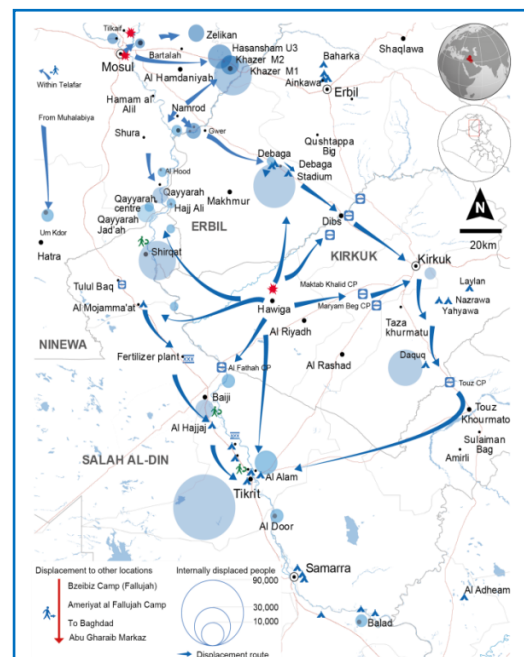
Socioeconomic Background

The military offensive to retake Mosul from ISIL is in its second month and the crisis continues to evolve in complexity. Resulting internal displacement has risen to about 90,000 people. With the military operation moving deeper into the city, fighting in the densely populated parts of Mosul may trigger larger scale displacement¹.

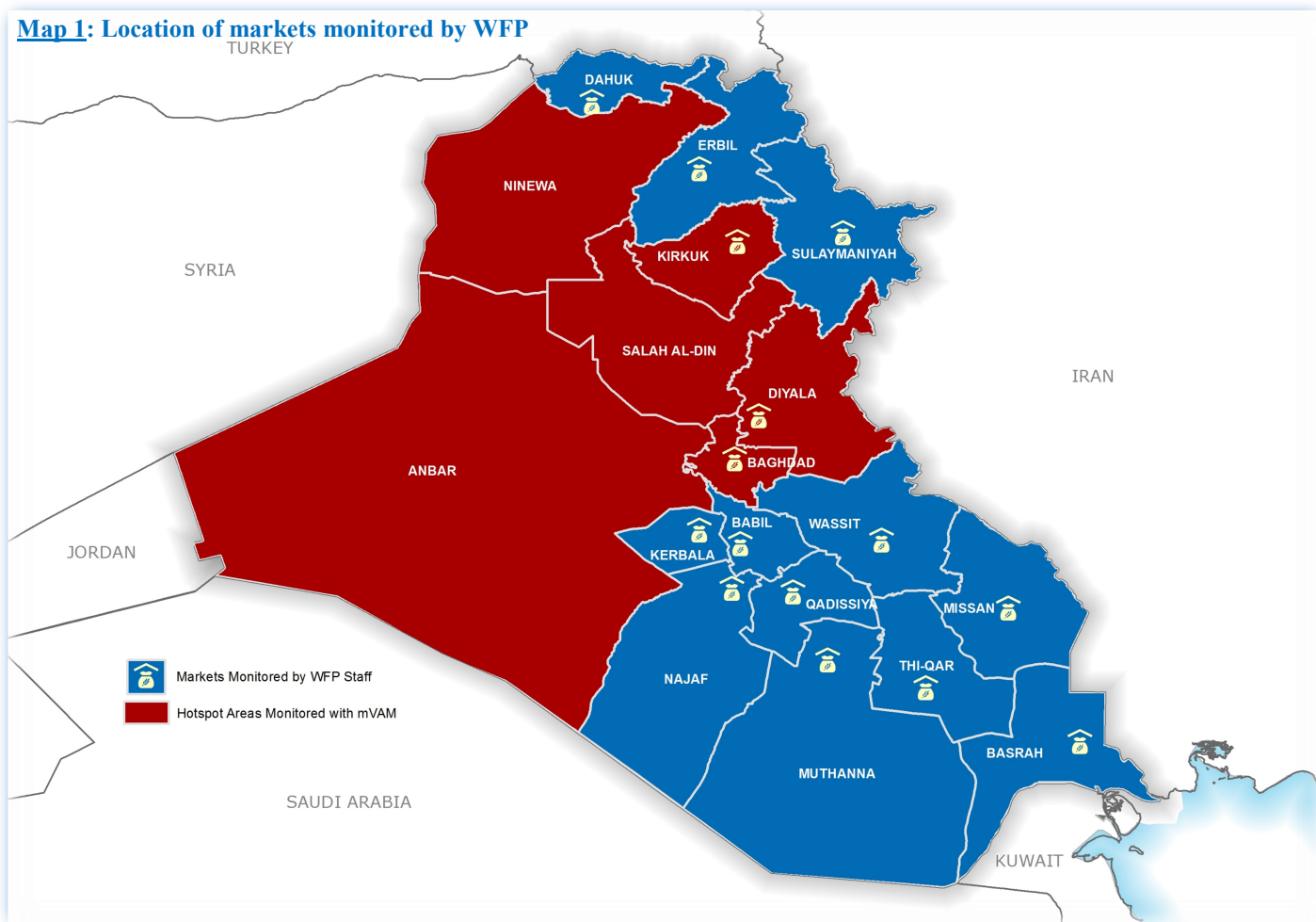
In the newly retaken areas of the district, where humanitarian aid reached the most vulnerable with 48h from the liberation, WFP and IRW key informants made themselves available for the first time since the siege started, and reported on food market conditions.

On the other hand, displacement from Hawija to Kirkuk continues. Meanwhile, almost 140,000 people have returned to Falluja since the start of returns in mid-September.

Families are also continuing to return to Ramadi thanks to the markets' ability to absorb further demand led to returns in these areas. This is not the case in Kirkuk, where markets are indeed highly stressed, while the markets in Falluja and Ramadi have been slowly re-habilitated and meet purchase demands of the returnees. The latest updates are presented in the map below¹.



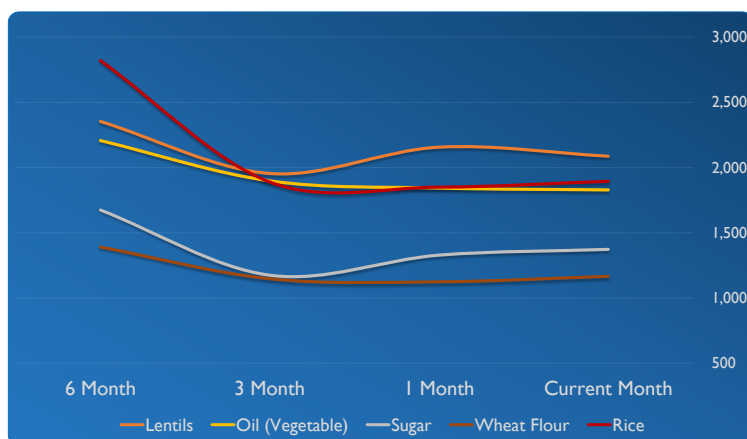
¹ OCHA - Humanitarian Bulletin Iraq November 2016 | Issued on 10 December

Map 1: Location of markets monitored by WFP

Food National Price Trends

In November the prices of the food commodities forming part of the minimum food basket have shown a stabilizing behavior at national level (Chart 1). The price of rice, sugar and wheat flour has indeed increased, respectively by 2%, 3% and 4% from October 2016. Differently the average price of lentils (-3%), and vegetable

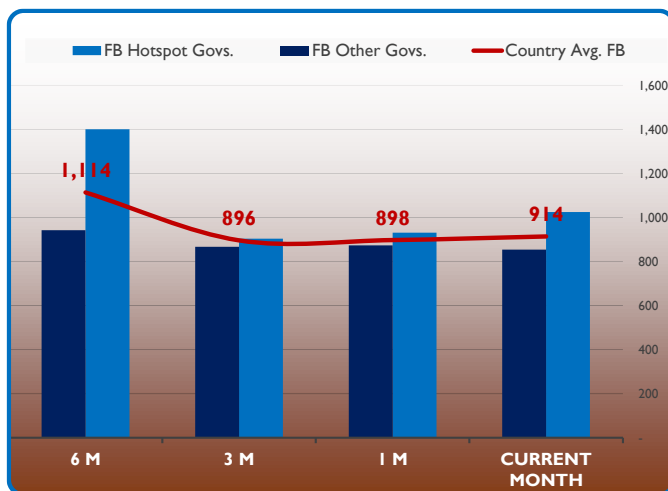
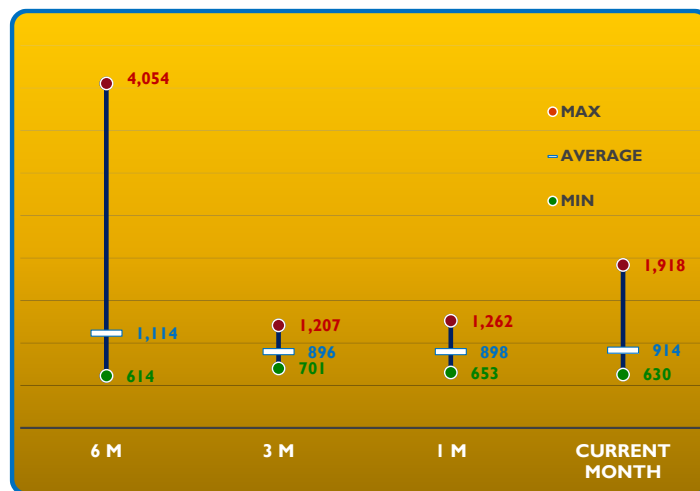
Chart 1: Price Trend of Main Food Commodities (in IQD/Unit)



oil (-1%) has decreased. Among the other relevant commodities monitored by WFP, onions and fresh milk are 1% cheaper than in October while meat is 3% more expensive.

At governorate level the trend has followed different paths. In Anbar the reduction in prices has resumed (-6%), showing a better absorption of the returnees increased demand compared to the previous month when it was impacted by an increase of 15% in food prices. This trend is

significant as while initially prices increased due to sudden influx, they stabilized in a few weeks due to market forces. A relevant decrease in the cost of the minimum food basket has been registered in Dahuk (-22%) with prices going back to normality after last month's spike. Kirkuk instead was subject to a further worsening of the situation due to the increased demand of IDPs from Hawija and the high prices in the besieged town itself. The governorate, for the third month in a row, has the most expensive food basket (IQD 1,918), with a concerning 52% price increase. In contrast, the least expensive food basket in Wassit costs IQD 630, one third compared to

Chart 2: Cost of Minimum Food Basket (in IQD)**Chart 3: Min. vs. Max. Cost of Food Basket (in IQD)**

the same basket in Kirkuk. Despite the conflicting behavior of food prices in the 18 governorates, the national average cost of the food basket has increased by 2% only (Chart 2).

Regarding staple commodities, differently from the previous months, the price of food items does not follow a common trend in all governorates. This indicates a poor integration of markets where the same commodity can be found at prices up to five times higher in some locations compared to others. In particular, those governorate where the cost of the food basket has increased show a surge in prices of each food item. This is the case of Kirkuk where everything, except lentils (-15%), is found to be much more expensive than in October. Kirkuk shows the highest increase in vegetable oil (+16%), onions (+13%), sugar (+26%), wheat flour (+49%) and rice (+84%). The highest decreases are found in Dahuk where most commodities were cheaper than in October. Exception is made for meat which in November was 52% more expensive than in the previous month. Anbar is a particular case since the decrease of the price of lentils (-39%) has highly impacted the cost of a food basket that has not registered any relevant change in the price of the other commodities. In Sulaimaniyah, meat (+33%) and onions (+7%) are remarkably more expensive, while rice (-6%) and sugar (-6%) are cheaper than in October. Details by commodity and by governorate are presented in Annex 1 and Annex 2.

As showed in Chart 2, the cost of the food basket has diverged when comparing hard-to-reach areas with the rest of the country. The food basket cost in hotspot locations is 20% higher than in the rest of the country, a remarkable increase compared to the only 6% difference registered in the previous month. This is due only to the increase of the cost of the food basket in Kirkuk, while prices have been stable in the other hotspot areas. At the same time, prices in the rest of the country remained stable. The divergence is also confirmed by the market integration analysis that shows the increase of the cost of the minimum food basket in stressed governorates.

It must be taken into consideration that averages don't include locations where food commodities are reported as not available (see Methodology).

Unskilled Labour Wages and Terms of Trade (ToT)

The wage of unskilled labour has been slightly increasing in hard-to-reach areas, while stable in the rest of the country. Despite the convergence, wages in hotspot locations are on average 20% lower than the rest of the country (Chart 4).

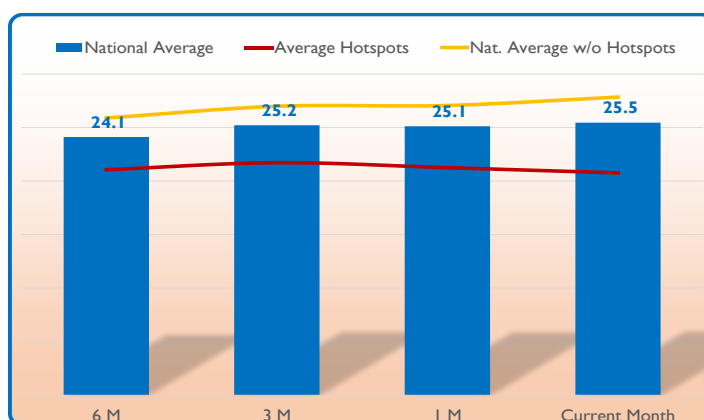
Looking at governorate level, Babylon and Qadissiya, for the third month in a row, register the highest daily wages at IQD 30,000 while Erbil offers the lowest daily stipends (IQD 15,000). No significant changes were registered from October.

The wage-to-food basket terms of trade (ToT) has shown a small improvement at national level. In hard-to-reach areas it is stable at 21 food baskets per salary, while in the rest of the country it is 3% higher. As a consequence of the higher cost of the food basket, the ToT in Kirkuk has decreased from 16.8 to 10.9 but increased in Dahuk from 24.1 to 30.9. The highest ToT in the country is found in Babylon at 38.3 (almost for times Kirkuk's) while the highest in hard-to-reach locations is found in Ninewa (25.7).

Chart 4: Cost of Unskilled Labour per day (in IQD)



Chart 5: Wage-to-Food Terms of Trade (in food baskets/day)



Focus on Hard-to-Reach Areas

Hard to reach areas are locations widespread in six governorates (Anbar, Baghdad, Diyala, Kirkuk, Ninewa and Salah Al-Din) where WFP complements its traditional data collection with mVAM methodology. Looking in details at these governorates, the food basket cost in the last six months has followed different trends.

Chart 6: Cost of Food Basket in Hotspot Areas (in IQD)

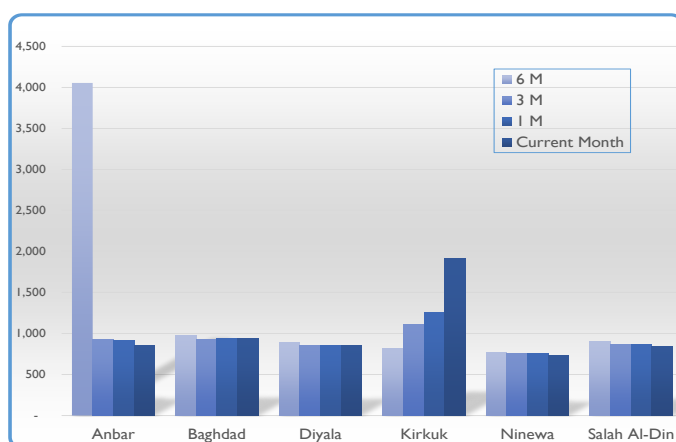
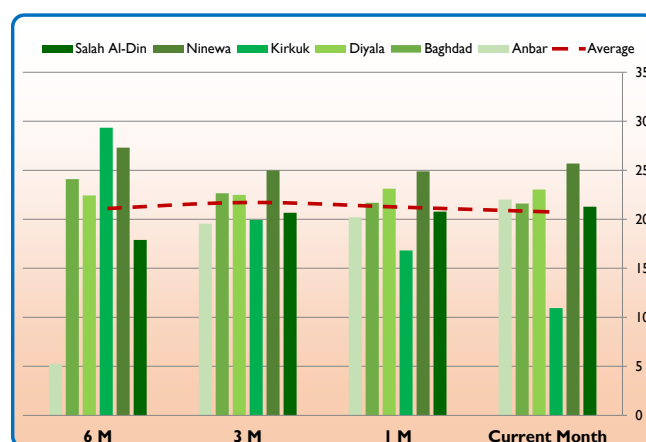


Chart 7: Wage-to-Food ToT in Hotspot Areas



In Anbar, after a surge in October, the cost of the food basket has decreased reaching the value of IQD 859. Prices have overall decreased in Salah Al-Din (-2%) and Ninewa (-2%). In Baghdad and Diyala the minimum food basket was at the same price of October. Kirkuk has registered a sharp increase reaching record levels at IQD 1,918 and doubling Baghdad which has the second most expensive food basket at IQD 938 (Chart 6).

In terms of food availability, key informants reported availability of main food commodities almost everywhere. The only districts in the country where food was reported as not fully available are Hay Al-Amel in Baghdad governorate and Hawija in Kirkuk. For the first time since the beginning of the ISIL occupation, information from Mosul were collected. Thanks to humanitarian response and market forces, food is available in the area and at normal prices. Concerned messages were received from key informants in Hawija. The city is sieged by ISIL and most of the basic food items are missing or available at extremely high prices. It has also to be noted that both Heet and Alqaiam respondents could not be reached and therefore there is no information on the food availability.

Methodology

Market information is collected on weekly basis by WFP field monitors. Additionally WFP in partnership with Islamic Relief Worldwide (IRW) collects market data remotely through mVAM technology from key informants in those governorates where access is restricted, using telephone interviews. Data are then cleaned and consolidated. Monthly averages are used for the Iraq Monthly Monitor Report. Map 1 shows the location of the WFP monitored markets as well as the hard to reach areas monitored through mVAM.

Field monitors collect prices for 23 food commodities, 3 fuel items, 7 hygiene commodities and the cost of unskilled labour for one day of work. WFP field monitors cover 12 governorates where access is not restricted plus three additional governorates (Kirkuk, Baghdad and Diyala) when the security situation allows. IRW key informants collect market prices of 8 main food commodities and the daily wage of unskilled labour from six hard to reach areas in central and northern governorates of Iraq (Anbar, Baghdad, Diyala, Kirkuk, Ninewa and Salah Al -Din) through mVAM technology.

The report is based on the analyses produced by the Integrated Market Surveillance Tool (IMST). The IMST is an agile market monitoring tool that was developed for WFP Iraq and is aimed at storing raw data collected by field monitors and key informants, and creating contextualized analyses. The tool analyzes trends of main food and non-food commodities, minimum food basket, and provides an indication of how much the markets are integrated within and across governorates. Food and non-food prices are analyzed against previous periods, including key baselines, such as the pre-crisis values of February 2015. Non-food items prices are not reported in this report unless a change in the price level has an impact on food security.

The IMST also includes information regarding the availability of main food commodities in hotspot locations, which is collected by key informants. The classification of the availability is based on the monthly averages. A commodity is classified as **Available** when it is found available on every visit in the key market of a specific governorate; **Widely Available** when for only one visit the availability is not full; **Sporadically Available** when in at least half of the visits, the commodity is recorded as rare in the market; a commodity is **Mostly Not Available** when it was found only in rare cases in a governorate during the analyzed month; finally a commodity is classified as **Not Available** when it is not found in any market of a governorate at all.

| | |
|------------|------------------------|
| AV | Available |
| WAD | Widely Available |
| SAV | Sporadically Available |
| MNA | Mostly Not Available |
| NA | Not Available |

The minimum food basket monitored by WFP contains five food commodities. The quantities are adjusted against the survival caloric intake needs. The five commodities are wheat flour, sugar, rice, vegetable oil and onion.

The IMST also provides specific and customizable analyses on hotspot areas, with district and sub-district level information. This allows to detect local issues regarding market price, availability as well as any other information regarding the specific market catchment area, including security and coping mechanism commonly adopted in the area. Given the unstable context the IMST is flexible enough to allow ad hoc analysis whenever required.

The Iraq Market Monitor Report is issued since August 2016 on a monthly basis.

NOTE: Due to the long-lasting conflict in Falluja and the related impact on markets, to avoid distortions on average price analyses by governorate and maintain consistency over time, the Falluja district has been removed from all quantitative analyses related to Anbar. Falluja's information and data are analyzed aside in district-level analyses.

Annex 1: Market Prices by Governorate

| Market | Commodity | Current Month | Price Data in Previous Periods | | | | % Change from Stated Period | | | | Direction of change | | | |
|---------|-----------------|---------------|--------------------------------|---------|---------|----------|-----------------------------|---------|---------|----------|---------------------|---------|---------|----------|
| | | | | | | | | | | | | | | |
| | | Current Month | 1 Month | 3 Month | 6 Month | 12 Month | 1 Month | 3 Month | 6 Month | 12 Month | 1 Month | 3 Month | 6 Month | 12 Month |
| Anbar | Fresh Milk | 1,938 | 1,880 | 1,883 | 2,550 | | 3% | 3% | -24% | | | | | |
| | Lentils | 1,679 | 2,740 | 1,787 | 2,083 | 2,083 | -39% | -6% | -19% | -19% | | | | |
| | Meat (Beef) | 11,300 | 11,333 | 13,260 | 13,542 | | 0% | -15% | -17% | | | | | |
| | Oil (Vegetable) | 1,942 | 1,969 | 2,117 | 8,337 | 2,000 | -1% | -8% | -77% | -3% | | | | |
| | Onion | 771 | 729 | 848 | 1,934 | | 6% | -9% | -60% | | | | | |
| | Rice | 1,763 | 1,745 | 1,752 | 8,346 | 2,625 | 1% | 1% | -79% | -33% | | | | |
| | Sugar | 1,347 | 1,379 | 1,337 | 7,899 | 1,625 | -2% | 1% | -83% | -17% | | | | |
| | Wheat Flour | 1,149 | 1,135 | 1,399 | 6,848 | 1,625 | 1% | -18% | -83% | -29% | | | | |
| Babylon | Fresh Milk | 2,000 | 2,000 | 2,000 | 2,000 | 2,000 | 0% | 0% | 0% | 0% | | | | |
| | Lentils | 2,000 | 2,000 | 2,000 | 2,000 | 2,000 | 0% | 0% | 0% | 0% | | | | |
| | Meat (Beef) | 13,000 | 13,000 | 13,000 | 14,000 | 14,000 | 0% | 0% | -7% | -7% | | | | |
| | Oil (Vegetable) | 2,250 | 2,250 | 2,250 | 2,500 | 2,500 | 0% | 0% | -10% | -10% | | | | |
| | Onion | 750 | 750 | 750 | 563 | 813 | 0% | 0% | 33% | -8% | | | | |
| | Rice | 1,500 | 1,500 | 1,500 | 1,000 | 1,000 | 0% | 0% | 50% | 50% | | | | |
| | Sugar | 1,000 | 1,000 | 1,000 | 750 | 750 | 0% | 0% | 33% | 33% | | | | |
| | Wheat flour | 1,000 | 1,000 | 1,000 | 1,000 | 1,000 | 0% | 0% | 0% | 0% | | | | |
| Baghdad | Fresh Milk | 1,723 | 1,730 | 1,787 | 1,696 | | 0% | -4% | 2% | | | | | |
| | Lentils | 1,939 | 1,975 | 1,985 | 2,161 | 2,250 | -2% | -2% | -10% | -14% | | | | |
| | Meat (Beef) | 13,378 | 13,275 | 13,515 | 13,130 | | 1% | -1% | 2% | | | | | |
| | Oil (Vegetable) | 1,873 | 1,842 | 1,665 | 1,935 | 1,944 | 2% | 13% | -3% | -4% | | | | |
| | Onion | 831 | 792 | 772 | 913 | | 5% | 8% | -9% | | | | | |
| | Rice | 2,014 | 1,983 | 1,971 | 2,048 | 2,222 | 2% | 2% | -2% | -9% | | | | |
| | Sugar | 1,277 | 1,283 | 1,309 | 1,274 | 1,139 | 0% | -2% | 0% | 12% | | | | |
| | Wheat Flour | 1,203 | 1,225 | 1,184 | 1,274 | 1,206 | -2% | 2% | -6% | 0% | | | | |
| Basrah | Fresh Milk | 3,625 | 4,000 | 4,000 | 6,000 | 6,000 | -9% | 0% | -40% | -40% | | | | |
| | Lentils | 3,000 | 3,000 | 2,000 | 2,000 | 2,000 | 0% | 50% | 50% | 50% | | | | |
| | Meat (Beef) | 13,000 | 13,000 | 13,000 | 14,000 | 14,000 | 0% | 0% | -7% | -7% | | | | |
| | Oil (Vegetable) | 1,500 | 1,500 | 1,500 | 2,000 | 2,125 | 0% | 0% | -25% | -29% | | | | |
| | Onion | 813 | 750 | 563 | 750 | 875 | 8% | 44% | 8% | -7% | | | | |
| | Rice | 2,000 | 2,000 | 2,000 | 2,000 | 2,500 | 0% | 0% | -20% | | | | | |
| | Sugar | 1,000 | 1,000 | 1,000 | 1,000 | 1,000 | 0% | 0% | 0% | 0% | | | | |
| | Wheat flour | 1,000 | 1,000 | 1,000 | 1,000 | 1,000 | 0% | 0% | 0% | 0% | | | | |
| Diyala | Fresh Milk | 1,604 | 1,572 | 1,644 | 1,675 | | 2% | -2% | -4% | | | | | |
| | Lentils | 1,715 | 1,757 | 1,700 | 1,614 | 1,594 | -2% | 1% | 6% | 8% | | | | |
| | Meat (Beef) | 13,556 | 13,421 | 13,050 | 13,739 | | 1% | 4% | -1% | | | | | |
| | Oil (Vegetable) | 1,847 | 1,875 | 1,844 | 1,917 | 1,797 | -1% | 0% | -4% | 3% | | | | |
| | Onion | 674 | 704 | 643 | 813 | | -4% | 5% | -17% | | | | | |
| | Rice | 1,813 | 1,803 | 1,888 | 1,841 | 2,094 | 1% | -4% | -2% | -13% | | | | |
| | Sugar | 1,146 | 1,079 | 1,006 | 1,152 | 1,000 | 6% | 14% | 0% | 15% | | | | |
| | Wheat Flour | 1,111 | 1,105 | 1,050 | 1,242 | 1,266 | 1% | 6% | -11% | -12% | | | | |
| Dahuk | Fresh Milk | 1,500 | 2,000 | 1,662 | 1,813 | 1,850 | -25% | -10% | -17% | -19% | | | | |
| | Lentils | 1,938 | 2,529 | 1,963 | 1,900 | 1,975 | -23% | -1% | 2% | -2% | | | | |
| | Meat (Beef) | 13,500 | 8,875 | 15,000 | 11,875 | 15,000 | 52% | -10% | 14% | -10% | | | | |
| | Oil (Vegetable) | 1,563 | 1,688 | 1,538 | 1,750 | 1,750 | -7% | 2% | -11% | -11% | | | | |
| | Onion | 813 | 1,000 | 613 | 838 | 825 | -19% | 33% | -3% | -2% | | | | |
| | Rice | 1,688 | 2,529 | 1,788 | 1,713 | 1,975 | -33% | -6% | -1% | -15% | | | | |
| | Sugar | 1,250 | 1,188 | 788 | 850 | 863 | 5% | 59% | 47% | 45% | | | | |
| | Wheat flour | 1,000 | 1,000 | 900 | 850 | 900 | 0% | 11% | 18% | 11% | | | | |
| Erbil | Fresh Milk | 2,000 | 1,750 | 1,750 | 2,000 | 2,000 | 14% | 14% | 0% | 0% | | | | |
| | Lentils | 2,000 | 1,500 | 1,500 | 2,000 | 2,375 | 33% | 33% | 0% | -16% | | | | |
| | Meat (Beef) | 16,000 | 16,000 | 16,000 | 15,000 | 16,000 | 0% | 0% | 7% | 0% | | | | |
| | Oil (Vegetable) | 1,500 | 1,500 | 1,500 | 1,750 | 1,550 | 0% | 0% | -14% | -3% | | | | |
| | Onion | 1,000 | 1,000 | 750 | 1,000 | 1,000 | 0% | 33% | 0% | 0% | | | | |
| | Rice | 2,000 | 2,000 | 2,500 | 9,000 | 2,000 | 0% | -20% | -78% | 0% | | | | |
| | Sugar | 1,000 | 1,000 | 1,000 | 1,250 | 1,250 | 0% | 0% | -20% | -20% | | | | |
| | Wheat flour | 750 | 750 | 1,000 | 1,000 | 1,000 | 0% | -25% | -25% | -25% | | | | |
| Kerbala | Fresh Milk | 2,000 | 2,000 | 2,000 | 2,000 | 2,000 | 0% | 0% | 0% | 0% | | | | |
| | Lentils | 2,000 | 2,000 | 2,000 | 2,250 | 2,250 | 0% | 0% | -11% | -11% | | | | |
| | Meat (Beef) | 16,000 | 16,000 | 16,000 | 16,000 | 16,000 | 0% | 0% | 0% | 0% | | | | |
| | Oil (Vegetable) | 1,750 | 2,125 | 2,500 | 2,500 | 2,500 | -18% | -30% | -30% | -30% | | | | |
| | Onion | 1,000 | 1,000 | 1,000 | 1,000 | 1,125 | 0% | 0% | 0% | -11% | | | | |
| | Rice | 2,000 | 1,938 | 2,000 | 2,250 | 2,250 | 3% | 0% | -11% | -11% | | | | |
| | Sugar | 1,438 | 1,438 | 1,250 | 1,500 | 1,313 | 0% | 15% | -4% | 10% | | | | |
| | Wheat flour | 1,250 | 1,250 | 1,250 | 1,375 | 1,000 | 0% | 0% | -9% | 25% | | | | |
| Kirkuk | Fresh Milk | 2,063 | 1,845 | 1,443 | 1,319 | | 12% | 43% | 56% | | | | | |
| | Lentils | 1,479 | 1,735 | 1,651 | 1,436 | 2,034 | -15% | -10% | 3% | -27% | | | | |
| | Meat (Beef) | 13,525 | 13,378 | 13,205 | 12,759 | | 1% | 2% | 6% | | | | | |
| | Oil (Vegetable) | 3,319 | 2,872 | 2,352 | 1,603 | 1,572 | 16% | 41% | 107% | 111% | | | | |
| | Onion | 2,175 | 1,932 | 682 | 457 | | 13% | 219% | 376% | | | | | |
| | Rice | 3,744 | 2,029 | 2,107 | 1,808 | 2,394 | 84% | 78% | 107% | 56% | | | | |
| | Sugar | 4,650 | 3,682 | 1,552 | 1,313 | 1,500 | 26% | 200% | 254% | 210% | | | | |
| | Wheat Flour | 3,263 | 2,193 | 1,835 | 1,026 | 1,308 | 49% | 78% | 218% | 150% | | | | |

| Market | Commodity | Current Month | Price Data in Previous Periods | | | | % Change from Stated Period | | | | Direction of change | | | |
|--------------|-----------------|---------------|--------------------------------|---------|---------|----------|-----------------------------|---------|---------|----------|---------------------|----------|----------|----------|
| | | Current Month | 1 Month | 3 Month | 6 Month | 12 Month | 1 Month | 3 Month | 6 Month | 12 Month | (+/-5%) | (+/-10%) | (+/-10%) | (+/-10%) |
| | | | | | | | | | | | | | | |
| Missan | Fresh Milk | 3,625 | 4,000 | 4,000 | 6,000 | 6,000 | -9% | -9% | -40% | -40% | ⬆️ | ⬆️ | ⬆️ | ⬆️ |
| | Lentils | 3,000 | 3,000 | 2,000 | 2,000 | 2,000 | 0% | 50% | 50% | 50% | — | ⬆️ | ⬆️ | — |
| | Meat (Beef) | 14,000 | 14,000 | 14,000 | 14,000 | 14,000 | 0% | 0% | 0% | 0% | — | — | — | — |
| | Oil (Vegetable) | 1,500 | 1,500 | 1,500 | 2,000 | 2,000 | 0% | 0% | -25% | -25% | — | — | ⬇️ | — |
| | Onion | 813 | 750 | 563 | 750 | 875 | 8% | 44% | 8% | -7% | ⬆️ | ⬆️ | — | — |
| | Rice | 2,000 | 2,000 | 2,000 | 2,000 | 2,000 | 0% | 0% | 0% | 0% | — | — | — | — |
| | Sugar | 1,000 | 1,000 | 1,000 | 1,000 | 1,000 | 0% | 0% | 0% | 0% | — | — | — | — |
| | Wheat flour | 1,000 | 1,000 | 1,000 | 1,000 | 1,000 | 0% | 0% | 0% | 0% | — | — | — | — |
| Muthana | Fresh Milk | 1,500 | 1,500 | 1,500 | | | 0% | 0% | | | — | — | — | — |
| | Lentils | 2,000 | 2,000 | 2,000 | 2,250 | 2,250 | 0% | 0% | -11% | -11% | — | — | ⬇️ | ⬇️ |
| | Meat (Beef) | 7,500 | 7,500 | 7,500 | 13,000 | 15,000 | 0% | 0% | -42% | -50% | — | — | ⬇️ | ⬇️ |
| | Oil (Vegetable) | 1,750 | 1,750 | 1,750 | 1,500 | 2,188 | 0% | 0% | 17% | -20% | — | — | ⬆️ | ⬆️ |
| | Onion | 750 | 750 | 500 | 875 | 1,063 | 0% | 50% | -14% | -29% | — | ⬆️ | ⬆️ | ⬆️ |
| | Rice | 2,000 | 2,000 | 2,000 | 2,000 | 2,150 | 0% | 0% | 0% | -7% | — | — | — | — |
| | Sugar | 1,063 | 1,250 | 1,000 | 1,025 | 1,131 | -15% | 6% | 4% | -6% | ⬆️ | ⬆️ | — | — |
| | Wheat flour | 1,250 | 1,250 | 1,250 | 750 | 750 | 0% | 0% | 67% | 67% | — | — | ⬆️ | ⬆️ |
| Najaf | Fresh Milk | 3,000 | 3,000 | 3,000 | 3,000 | 3,000 | 0% | 0% | 0% | 0% | — | — | — | — |
| | Lentils | 2,000 | 2,000 | 1,813 | 2,000 | 1,875 | 0% | 10% | 0% | 7% | — | ⬆️ | — | — |
| | Meat (Beef) | 15,000 | 15,000 | 15,000 | 15,000 | 15,000 | 0% | 0% | 0% | 0% | — | — | — | — |
| | Oil (Vegetable) | 1,750 | 1,750 | 1,750 | 1,750 | 2,000 | 0% | 0% | 0% | -13% | — | — | — | ⬆️ |
| | Onion | 750 | 750 | 750 | 750 | 750 | 0% | 0% | 0% | 0% | — | — | — | — |
| | Rice | 2,750 | 2,688 | 2,438 | 2,250 | 2,250 | 2% | 13% | 22% | 22% | — | ⬆️ | ⬆️ | ⬆️ |
| | Sugar | 1,500 | 1,500 | 1,500 | 1,500 | 1,500 | 0% | 0% | 0% | 0% | — | — | — | ⬆️ |
| | Wheat flour | 1,500 | 1,500 | 1,500 | 500 | 450 | 0% | 0% | 200% | 233% | — | — | ⬆️ | — |
| Ninewa | Fresh Milk | 1,944 | 1,635 | 1,480 | 1,658 | | 19% | 31% | 17% | | ⬆️ | ⬆️ | ⬆️ | ⬆️ |
| | Lentils | 1,514 | 1,404 | 1,375 | 1,722 | 1,900 | 8% | 10% | -12% | -20% | ⬆️ | ⬆️ | ⬆️ | ⬆️ |
| | Meat (Beef) | 11,635 | 11,462 | 11,842 | 12,684 | | 2% | -2% | -8% | | — | — | — | ⬆️ |
| | Oil (Vegetable) | 1,534 | 1,590 | 1,651 | 1,713 | 2,000 | -4% | -7% | -10% | -23% | — | — | ⬇️ | ⬇️ |
| | Onion | 635 | 635 | 637 | 763 | | 0% | 0% | -17% | | — | — | ⬆️ | — |
| | Rice | 1,519 | 1,522 | 1,566 | 1,637 | 2,250 | 0% | -3% | -7% | -32% | — | — | — | ⬇️ |
| | Sugar | 1,161 | 1,109 | 1,000 | 1,065 | 1,050 | 5% | 16% | 9% | 11% | — | ⬆️ | — | ⬆️ |
| | Wheat Flour | 977 | 1,071 | 1,039 | 956 | 1,000 | -9% | -6% | 2% | -2% | ⬆️ | ⬆️ | — | — |
| Qadisiya | Fresh Milk | 2,000 | 2,000 | 2,000 | 2,000 | 2,000 | 0% | 0% | 0% | 0% | — | — | — | — |
| | Lentils | 2,000 | 2,000 | 2,000 | 2,000 | 2,000 | 0% | 0% | 0% | 0% | — | — | — | — |
| | Meat (Beef) | 13,000 | 13,000 | 13,000 | 15,000 | 15,000 | 0% | 0% | -13% | -13% | — | — | ⬇️ | ⬆️ |
| | Oil (Vegetable) | 2,250 | 2,250 | 2,250 | 2,500 | 2,500 | 0% | 0% | -10% | -10% | — | — | — | — |
| | Onion | 938 | 938 | 750 | 688 | 1,000 | 0% | 25% | 36% | -6% | — | ⬆️ | ⬆️ | — |
| | Rice | 1,500 | 1,500 | 1,500 | 1,000 | 1,000 | 0% | 0% | 50% | 50% | — | — | ⬆️ | ⬆️ |
| | Sugar | 1,188 | 1,250 | 1,000 | 750 | 750 | -5% | 19% | 58% | 58% | — | ⬆️ | ⬆️ | ⬆️ |
| | Wheat flour | 1,000 | 1,000 | 1,000 | 750 | 750 | 0% | 0% | 33% | 33% | — | — | ⬆️ | ⬆️ |
| Salah Al-Din | Fresh Milk | 1,506 | 1,445 | 1,493 | 1,642 | | 4% | 1% | -8% | | — | — | — | — |
| | Lentils | 1,872 | 1,809 | 1,914 | 1,950 | 1,489 | 3% | -2% | -4% | 26% | — | — | — | ⬆️ |
| | Meat (Beef) | 12,558 | 12,782 | 12,564 | 11,900 | | -2% | 0% | 6% | | — | — | — | — |
| | Oil (Vegetable) | 1,779 | 1,845 | 1,750 | 1,859 | 2,125 | -4% | 2% | -4% | -16% | — | — | — | ⬆️ |
| | Onion | 680 | 650 | 612 | 675 | | 5% | 11% | 1% | | — | ⬆️ | — | — |
| | Rice | 1,855 | 1,936 | 1,914 | 1,848 | 2,182 | -4% | -3% | 0% | -15% | — | — | — | ⬇️ |
| | Sugar | 1,198 | 1,200 | 1,090 | 1,152 | 1,075 | 0% | 10% | 4% | 11% | — | ⬆️ | — | ⬆️ |
| | Wheat Flour | 992 | 1,010 | 1,029 | 1,213 | 1,080 | -2% | -4% | -18% | -8% | — | — | ⬇️ | — |
| Sulaimaniyah | Fresh Milk | 2,000 | 2,000 | 2,500 | 2,375 | 2,250 | 0% | -20% | -16% | -11% | — | ⬆️ | ⬆️ | ⬆️ |
| | Lentils | 2,438 | 2,375 | 2,500 | 2,688 | 2,438 | 3% | -3% | -9% | 0% | — | — | — | — |
| | Meat (Beef) | 15,000 | 11,250 | 16,500 | 16,500 | 16,125 | 33% | -10% | -9% | -7% | ⬆️ | ⬆️ | ⬆️ | — |
| | Oil (Vegetable) | 1,813 | 1,875 | 3,250 | 2,500 | 2,125 | 3% | -44% | -28% | -15% | — | — | ⬇️ | ⬆️ |
| | Onion | 938 | 875 | 1,313 | 1,313 | 1,313 | 7% | -29% | -29% | -29% | ⬆️ | ⬆️ | ⬆️ | — |
| | Rice | 1,875 | 2,000 | 2,750 | 2,200 | 1,963 | -6% | -32% | -15% | -4% | ⬆️ | ⬆️ | ⬆️ | — |
| | Sugar | 1,000 | 1,063 | 1,813 | 1,750 | 1,375 | -6% | -45% | -43% | -27% | ⬆️ | ⬆️ | ⬆️ | ⬆️ |
| | Wheat flour | 1,000 | 1,000 | 1,250 | 1,375 | 1,125 | 0% | -20% | -27% | -11% | — | ⬆️ | ⬆️ | ⬆️ |
| Thi Qar | Fresh Milk | 5,000 | 5,000 | 5,000 | 5,000 | 5,000 | 0% | 0% | 0% | 0% | — | — | — | — |
| | Lentils | 2,500 | 2,500 | 2,500 | 2,500 | 2,250 | 0% | 0% | 0% | 11% | — | — | — | ⬆️ |
| | Meat (Beef) | 8,525 | 11,500 | 12,000 | 12,000 | 12,000 | -26% | -29% | -29% | -29% | ⬇️ | ⬆️ | ⬆️ | ⬆️ |
| | Oil (Vegetable) | 1,500 | 1,500 | 1,500 | 2,000 | 2,000 | 0% | 0% | -25% | -25% | — | — | ⬆️ | ⬆️ |
| | Onion | 875 | 1,125 | 1,063 | 750 | 875 | -22% | -18% | 17% | 0% | ⬆️ | ⬆️ | ⬆️ | — |
| | Rice | 1,084 | 1,125 | 1,167 | 1,250 | 1,388 | -4% | -7% | -13% | -22% | — | ⬆️ | ⬆️ | ⬆️ |
| | Sugar | 1,250 | 1,250 | 1,250 | 1,250 | 1,250 | 0% | 0% | 0% | 0% | — | — | — | — |
| | Wheat flour | 800 | 900 | 900 | 575 | 675 | -11% | -11% | 39% | 19% | ⬆️ | ⬆️ | ⬆️ | ⬆️ |
| Wasit | Fresh Milk | 5,000 | 5,000 | 5,000 | 5,000 | 5,000 | 0% | 0% | 0% | 0% | — | — | — | — |
| | Lentils | 2,500 | 2,500 | 2,500 | 2,250 | 2,500 | 0% | 0% | 11% | 0% | — | — | ⬆️ | — |
| | Meat (Beef) | 12,000 | 12,000 | 12,000 | 12,000 | 12,000 | 0% | 0% | 0% | 0% | — | — | — | — |
| | Oil (Vegetable) | 1,500 | 1,500 | 1,500 | 2,000 | 2,000 | 0% | 0% | -25% | -25% | — | — | ⬆️ | ⬆️ |
| | Onion | 875 | 1,125 | 1,000 | 813 | 938 | -22% | -13% | 8% | -7% | ⬆️ | ⬆️ | — | ⬆️ |
| | Rice | 1,000 | 1,000 | 1,167 | 1,650 | 2,063 | 0% | -14% | -39% | -52% | — | ⬆️ | ⬆️ | ⬆️ |
| | Sugar | 1,250 | 1,250 | 1,250 | 1,250 | 1,250 | 0% | 0% | 0% | 0% | — | — | — | — |
| Wheat flour | 750 | 850 | 1,075 | 1,050 | 1,175 | -12% | -30% | -29% | -36% | ⬆️ | ⬆️ | ⬆️ | ⬆️ | |

Annex 2: Market Prices by Commodity

| Commodity | Market | Current Month | Price Data in Previous Periods | | | | | % Change from Stated | | | | Direction of change | | | |
|------------|------------------|---------------|--------------------------------|---------|---------|----------|---------|----------------------|---------|----------|---------|---------------------|----------|----------|--|
| | | Current Month | Period | | | | | Period | | | | Period | | | |
| | | | 1 Month | 3 Month | 6 Month | 12 Month | 1 Month | 3 Month | 6 Month | 12 Month | (+/-3%) | (+/-5%) | (+/-10%) | (+/-10%) | |
| Fresh Milk | National Average | 2,446 | 2,444 | 2,452 | 2,807 | 3,373 | -1% | 0% | -13% | -27% | | | | | |
| | Anbar | 1,938 | 1,980 | 1,983 | 2,530 | 2,800 | 3% | 3% | -24% | | | | | | |
| | Babylon | 2,000 | 2,000 | 2,000 | 2,000 | 2,000 | 0% | 0% | 0% | 0% | | | | | |
| | Baghdad | 1,723 | 1,730 | 1,787 | 1,694 | | 0% | -4% | 2% | | | | | | |
| | Bashra | 3,625 | 4,000 | 4,000 | 4,000 | 4,000 | -9% | -9% | -40% | -40% | | | | | |
| | Diyala | 1,604 | 1,572 | 1,644 | 1,675 | | 2% | -2% | -4% | | | | | | |
| | Dahuk | 1,500 | 2,000 | 1,663 | 1,813 | | -25% | -10% | -17% | -19% | | | | | |
| | Erbil | 2,000 | 1,750 | 1,750 | 2,000 | 2,000 | 14% | 14% | 0% | 0% | | | | | |
| | Kerbala | 2,000 | 2,000 | 2,000 | 2,000 | 2,000 | 0% | 0% | 0% | 0% | | | | | |
| | Kirkuk | 2,063 | 1,845 | | | | 12% | 43% | 56% | | | | | | |
| | Missan | 3,625 | 4,000 | 4,000 | 4,000 | 4,000 | -9% | -9% | -40% | -40% | | | | | |
| | Muthana | 1,500 | 1,500 | 1,500 | | | 0% | 0% | | | | | | | |
| | Najaf | 3,000 | 3,000 | 3,000 | 3,000 | 3,000 | 0% | 0% | 0% | 0% | | | | | |
| | Ninewa | 1,944 | 1,635 | 1,480 | 1,658 | | 19% | 31% | 17% | | | | | | |
| | Qadisiya | 2,000 | 2,000 | 2,000 | 2,000 | 2,000 | 0% | 0% | 0% | 0% | | | | | |
| | Salah Al-Din | 1,506 | 1,493 | 1,493 | 1,642 | | 4% | 1% | -8% | | | | | | |
| | Sulaimaniyah | 2,000 | 2,000 | 2,000 | 2,375 | 2,250 | 0% | -20% | -16% | -11% | | | | | |
| | Thi Qar | 2,000 | 2,000 | 2,000 | 2,000 | 2,000 | 0% | 0% | 0% | 0% | | | | | |
| | Wasit | 2,000 | 2,000 | 2,000 | 2,000 | 2,000 | 0% | 0% | 0% | 0% | | | | | |

| Commodity | Market | Current Month | Price Data in Previous Periods | | | | % Change from Stated | | | | Direction of change | | | |
|-----------|------------------|---------------|--------------------------------|-------|-------|-------|----------------------|------|------|------|---------------------|---|---|----|
| | | Current Month | 1 | 3 | 6 | 12 | 1 | 3 | 6 | 12 | 1 | 3 | 6 | 12 |
| | | | Month | Month | Month | Month | | | | | | | | |
| Lentils | National Average | 2,087 | 2,157 | 1,955 | 2,334 | 2,234 | -3% | 7% | -11% | -7% | — | — | — | — |
| | Anbar | 1,679 | 2,740 | 1,787 | 2,083 | 2,083 | -39% | -6% | -19% | -19% | — | — | — | — |
| | Babylon | 2,000 | 2,000 | 2,000 | 2,000 | 2,000 | 0% | 0% | 0% | 0% | — | — | — | — |
| | Baghdad | 1,939 | 1,975 | 1,985 | 2,420 | — | -2% | -2% | -20% | — | — | — | — | — |
| | Bashra | 3,000 | 3,000 | 2,000 | 2,000 | 2,000 | 0% | 50% | 50% | 50% | — | — | — | — |
| | Diyala | 1,715 | 1,757 | 1,700 | 1,750 | — | -2% | 1% | -74% | — | — | — | — | — |
| | Dahuk | 1,938 | 2,529 | 1,963 | 1,900 | 1,975 | -23% | -1% | 2% | -2% | — | — | — | — |
| | Erbil | 2,000 | 1,500 | 1,500 | 2,000 | 2,375 | 33% | 33% | 0% | -16% | — | — | — | — |
| | Kerbala | 2,000 | 2,000 | 2,000 | 2,250 | 2,250 | 0% | 0% | -11% | -11% | — | — | — | — |
| | Kirkuk | 1,715 | 1,735 | 1,651 | 1,935 | 2,350 | -15% | -10% | -24% | -37% | — | — | — | — |
| | Missan | 2,000 | 2,000 | 2,000 | 2,000 | 2,000 | 0% | 50% | 50% | 50% | — | — | — | — |
| | Muthana | 2,000 | 2,000 | 2,000 | 2,250 | 2,250 | 0% | 0% | -11% | -11% | — | — | — | — |
| | Najaf | 2,000 | 2,000 | 1,813 | 2,000 | — | 0% | 10% | 0% | 7% | — | — | — | — |
| | Ninewa | 1,514 | — | — | 1,917 | 2,210 | 8% | 10% | -21% | -53% | — | — | — | — |
| | Qadisiya | 2,000 | 2,000 | 2,000 | 2,000 | 2,000 | 0% | 0% | 0% | 0% | — | — | — | — |
| | Salah Al-Din | 1,872 | 1,809 | 1,914 | 1,914 | 2,232 | 3% | -2% | 17% | -16% | — | — | — | — |
| | Sulaimaniyah | 2,438 | 2,375 | 2,500 | 2,688 | 2,438 | 3% | -3% | -9% | 0% | — | — | — | — |
| | Thi Qar | 2,500 | 2,500 | 2,500 | 2,500 | 2,500 | 0% | 0% | 11% | 11% | — | — | — | — |
| | Wasit | 2,500 | 2,500 | 2,500 | 2,250 | 2,250 | 0% | 11% | 0% | 0% | — | — | — | — |

| Commodity | Market | Current Month | | | | Price Data in Previous Periods | | | | % Change from Stated | | | | Direction of change | | | |
|-------------|------------------|---------------|--------|--------|--------|--------------------------------|---------|---------|---------|----------------------|---------|---------|---------|---------------------|---|--|--|
| | | Current Month | 1 | 3 | 6 | 12 | Period | | | | Period | | | | | | |
| | | | | | | | 1 Month | 3 Month | 6 Month | 12 Month | 1 Month | 3 Month | 6 Month | 12 Month | | | |
| Meat (Beef) | National Average | 12,915 | 12,999 | 13,371 | 18,008 | 15,240 | 3% | -3% | 20% | -15% | — | — | — | — | — | | |
| | Anbar | 11,300 | 11,333 | 13,260 | 13,542 | — | 0% | -15% | -17% | — | — | — | — | — | — | | |
| | Babylon | 13,000 | 13,000 | 13,000 | 14,000 | 14,000 | 0% | 0% | -7% | -7% | — | — | — | — | — | | |
| | Baghdad | 13,378 | 13,275 | 13,515 | 16,37 | 20,625 | 1% | -1% | 717% | -35% | — | — | — | — | — | | |
| | Bashra | 13,000 | 13,000 | 13,000 | 14,000 | 14,000 | 0% | 0% | -7% | -7% | — | — | — | — | — | | |
| | Diyala | 13,556 | 13,421 | 13,050 | 18,848 | 21,104 | 1% | 4% | 634% | -41% | — | — | — | — | — | | |
| | Dahuk | 13,500 | 8,875 | 15,000 | 11,875 | 15,000 | 52% | -10% | 14% | -10% | — | — | — | — | — | | |
| | Erbil | 16,000 | 16,000 | 16,000 | 15,000 | 16,000 | 0% | 7% | 0% | 0% | — | — | — | — | — | | |
| | Kerbala | 16,000 | 16,000 | 16,000 | 16,000 | 16,000 | 0% | 0% | 0% | 0% | — | — | — | — | — | | |
| | Kirkuk | 13,525 | 13,378 | 13,205 | 18,16 | 33,000 | 1% | 2% | 645% | -41% | — | — | — | — | — | | |
| | Missan | 14,000 | 14,000 | 14,000 | 14,000 | 14,000 | 0% | 0% | 0% | 0% | — | — | — | — | — | | |
| | Muthana | 15,000 | 15,000 | 15,000 | 15,000 | 15,000 | 0% | -42% | -50% | -50% | — | — | — | — | — | | |
| | Najaf | 15,000 | 15,000 | 15,000 | 15,000 | 15,000 | 0% | 0% | 0% | 0% | — | — | — | — | — | | |
| | Ninewa | 11,635 | 11,462 | 11,842 | 6,050 | 17,273 | 2% | -2% | 92% | -33% | — | — | — | — | — | | |
| | Qadisiya | 13,000 | 13,000 | 13,000 | 15,000 | 15,000 | 0% | -13% | -13% | -13% | — | — | — | — | — | | |
| | Salah Al-Din | 12,558 | 12,782 | 12,564 | 12,564 | 12,564 | -2% | 0% | 886% | 868% | — | — | — | — | — | | |
| | Sulaimaniyah | 15,000 | 11,250 | 16,250 | 16,250 | 16,125 | 33% | -10% | -9% | -7% | — | — | — | — | — | | |
| | Thi Qar | 8,525 | 11,500 | 12,000 | 12,000 | 12,000 | -26% | -29% | -29% | -29% | — | — | — | — | — | | |
| | Wasit | 12,000 | 12,000 | 12,000 | 12,000 | 12,000 | 0% | 0% | 0% | 0% | — | — | — | — | — | | |

| Commodity | Market | Current Month | Price Data in Previous Periods | | | | | % Change from Stated Period | | | | Direction of change | | | |
|-----------------|------------------|---------------|--------------------------------|---------|---------|----------|---------|-----------------------------|---------|----------|---------|---------------------|---------|----------|--|
| | | Current Month | 1 Month | 3 Month | 6 Month | 12 Month | 1 Month | 3 Month | 6 Month | 12 Month | 1 Month | 3 Month | 6 Month | 12 Month | |
| | | | | | | | | | | | | | | | |
| Oil (Vegetable) | National Average | 1,829 | 1,843 | 1,899 | 2,207 | 2,095 | -1% | -4% | -17% | -13% | | | | | |
| | Anbar | 1,942 | 2,150 | 2,117 | 2,000 | | 0% | -8% | -77% | -3% | | | | | |
| | Babylon | 2,250 | 2,250 | 2,250 | 2,250 | 2,250 | 0% | 0% | -10% | -10% | | | | | |
| | Baghdad | 1,873 | 1,892 | 1,665 | 1,242 | | 2% | 13% | 51% | | | | | | |
| | Bashra | 1,500 | 1,500 | 1,500 | 2,000 | 2,125 | 0% | 0% | -25% | -29% | | | | | |
| | Diyala | 1,847 | 1,875 | 1,844 | 1,626 | | -1% | 0% | 80% | | | | | | |
| | Dahuk | 1,563 | 1,688 | 1,538 | 1,750 | 1,750 | -7% | 2% | -11% | -11% | | | | | |
| | Erbil | 1,500 | 1,500 | 1,500 | 1,750 | 1,750 | 0% | 0% | -14% | -3% | | | | | |
| | Kerbala | 1,750 | 2,125 | 2,500 | 2,500 | 2,500 | -18% | -30% | -30% | -30% | | | | | |
| | Kirkuk | 3,510 | 2,072 | 2,352 | | | 16% | 41% | 247% | | | | | | |
| | Missan | 2,000 | 2,000 | 2,000 | 2,000 | 2,000 | 0% | 0% | -25% | -25% | | | | | |
| | Muthana | 1,750 | 1,750 | 1,750 | 1,500 | 2,188 | 0% | 0% | 17% | -20% | | | | | |
| | Najaf | 1,750 | 1,750 | 1,750 | 1,750 | 2,000 | 0% | 0% | 0% | -13% | | | | | |
| | Ninewa | 1,534 | 1,590 | 1,651 | 1,213 | | -4% | -7% | 26% | | | | | | |
| | Qadisiya | 2,250 | 2,250 | 2,250 | 2,250 | 2,250 | 0% | 0% | -10% | -10% | | | | | |
| | Salah Al-Din | 1,779 | 1,845 | 1,750 | | | -4% | 2% | | | | | | | |
| | Sulaimaniyah | 1,813 | 1,875 | 1,813 | 2,250 | 2,125 | -3% | -44% | -28% | -15% | | | | | |
| | Thi Qar | 1,500 | 1,500 | 1,500 | 2,000 | 2,000 | 0% | 0% | -25% | -25% | | | | | |
| | Wasit | 1,500 | 1,500 | 1,500 | 2,000 | 2,000 | 0% | 0% | -25% | -25% | | | | | |

| Commodity | Market | Current | Price Data in Previous Periods | | | | | % Change from Stated | | | | Direction of change | | | |
|--------------|------------------|---------------|--------------------------------|---------|---------|----------|---------|----------------------|---------|----------|---------|---------------------|---------|----------|--|
| | | Current Month | Period | | | | | Period | | | | Period | | | |
| | | | 1 Month | 3 Month | 6 Month | 12 Month | 1 Month | 3 Month | 6 Month | 12 Month | 1 Month | 3 Month | 6 Month | 12 Month | |
| Onion | National Average | 893 | 903 | 767 | 925 | 954 | -1% | 16% | -3% | -6% | — | — | — | — | |
| | Anbar | 771 | 729 | 848 | 1,934 | — | 6% | -9% | -60% | — | — | — | — | | |
| | Babylon | 750 | 750 | 750 | — | 813 | 0% | 0% | 33% | -8% | — | — | — | | |
| | Baghdad | 831 | 792 | 772 | — | — | 5% | 8% | — | — | — | — | — | | |
| | Bashra | 813 | 750 | 563 | 750 | 875 | 8% | 44% | 8% | -7% | — | — | — | | |
| | Diyala | 674 | 704 | 643 | — | — | -4% | 5% | — | — | — | — | — | | |
| | Dahuk | 813 | 1,000 | 611 | 838 | 825 | -19% | 33% | -3% | -2% | — | — | — | | |
| | Erbil | 1,000 | 1,000 | 750 | 1,000 | 1,000 | 0% | 33% | 0% | 0% | — | — | — | | |
| | Kerbala | 1,000 | 1,000 | 1,000 | 1,000 | 1,125 | 0% | 0% | 0% | -11% | — | — | — | | |
| | Kirkuk | — | — | — | 682 | — | 13% | 219% | — | — | — | — | — | | |
| | Masan | 813 | 750 | 563 | 750 | 875 | 5% | 44% | 8% | -7% | — | — | — | | |
| | Muchana | 750 | 750 | 750 | — | 875 | 1,06% | 0% | 50% | -14% | -29% | — | — | | |
| | Najaf | 750 | 750 | 750 | 750 | — | 0% | 0% | 0% | 0% | — | — | — | | |
| | Ninewa | — | — | — | 637 | — | 0% | 0% | — | — | — | — | — | | |
| | Qadisiya | 938 | 938 | 750 | 688 | 1,000 | 0% | 25% | 36% | -6% | — | — | — | | |
| Salah Al-Din | 680 | 650 | 612 | — | — | 5% | 11% | — | — | — | — | — | | | |
| Sulaimaniyah | 938 | 875 | 1,011 | 1,011 | 1,011 | 7% | -29% | -29% | 29% | — | — | — | | | |
| Thi Qar | 875 | 1,125 | 1,063 | 750 | 875 | -22% | -18% | 17% | 0% | — | — | — | | | |

Looking at the rest of the country it is evident that hotspot locations are still suffering from the aftermath of the conflict and the recent wave of displacement from Mosul. The best ToT is found in Babylon (38). To be mentioned Dahuk, that saw its wages able to buy 24 food baskets (23% less than in September).