



Highlights:

o In eastern Aleppo city, food prices decreased during the last week of December, as humanitarian access opened up.

o The prolonged crisis combined with the lean season had significant negative impact on the market functionality in Deir-ez-Zor city and Idlib, leading to higher prices and shortages in food.

o Average monthly prices of wheat flour and public bread increased significantly by 25 percent and 18 percent, reaching their highest levels.

o The purchasing power of daily wage earners as reflected by the terms-of-trade, decreased by 7.2 percent and 22 percent compared to levels observed in June and same month last year, respectively.

For further information please contact:

Ahmad Shah Shahi

Ahmadshah.Shahi@wfp.org

Dima Alhumsa

Dima.Alhumsa@wfp.org

A: Standard Food Basket

In December 2016, the national average cost of a standard food basket¹ (group of essential commodities) was SYP 38,624, an increase of eight percent compared to last month, 16 percent compared to six months ago and 42 percent compared to the cost last year.

The increase in the price of main food commodities in the past months can be attributed to the effect of the prolonged conflict, which continue to disrupt the regular flow of supplies in some local markets, as well as recent price increases for fuel due to growing demand for cooking and heating during winter.

Moreover, the lean season in Rural Damascus and Deir-ez-Zor and increasing number of IDPs in Idlib had also a negative impact on national average prices.

Looking at the pattern of food basket costs across all main markets, the lowest cost was observed in Dar'a governorate at SYP 26,545 while Deir-ez-Zor governorate recorded the highest cost with SYP 83,975.

Close market monitoring data identifies a significant decrease in food prices in east Aleppo city in the last week of December in-line with humanitarian access to the city.

At the same time, key informants reported severely disrupted supply routes in Deir-ez-Zor, Madaya and east Ghouta, while better market functionality was observed in the hard to reach areas in Al-Hasakeh and Rural Damascus.

Chart 1: Min. vs. Max. Cost of Food Basket (in SYP)

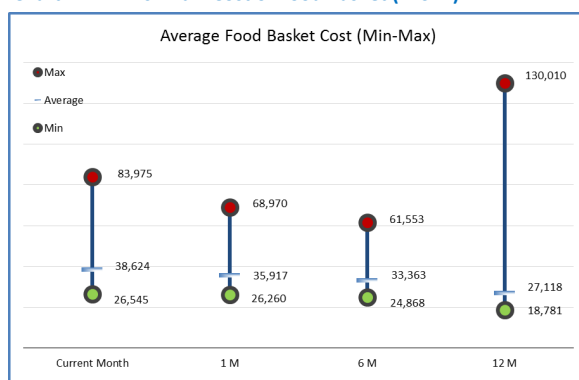
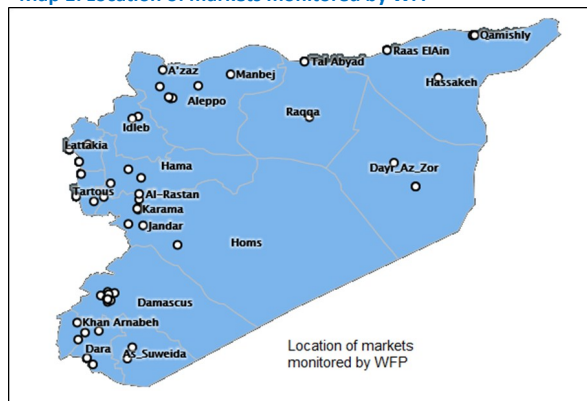


Figure 1: Food Basket Cost and Changes (in SYP)

Governorate	Price December 2016	Price 1 month change	Price 6 months changes	Price 12 months changes
Aleppo	SYP 72,983	34%	173%	250%
Damascus	SYP 30,600	1%	5%	54%
Dar'a	SYP 26,545	1%	4%	29%
Deir-ez-Zor	SYP 83,975	22%	36%	-35%
Hama	SYP 32,733	4%	11%	61%
Al-Hasakeh	SYP 36,938	-6%	-11%	73%
Homs	SYP 29,255	6%	18%	56%
Latakia	SYP 31,539	2%	9%	56%
Ar-Raqqa	SYP 36,800	-1%	-16%	67%
Rural Damascus	SYP 34,463	-1%	-10%	-24%
As-Sweida	SYP 31,793	2%	10%	58%
Tartous	SYP 30,513	0%	2%	50%
Quneitra	SYP 28,410	0%	3%	N/A
Idlib	SYP 34,188	10%	11%	N/A
Average	SYP 38,624	8%	16%	42%

Map 1: Location of markets monitored by WFP



1. The cost of a standard basket of dry goods providing 1,930 kcal a day for a family of five during a month. The basket includes 37 kg of bread, 19 kg rice, 19 kg lentils, 5 kg of sugar, and 7 kg of vegetable oil.

B: Retail Prices

1- Wheat Flour, Rice and Bulgur:

In December 2016, the average nominal retail price of wheat flour increased by 24.6 percent compared to the previous month, reaching SYP 336/Kg, while rice was sold at SYP 570/Kg, maintaining the same level as last month. Bulgur witnessed an increase of 11.5 percent resulting in a price of SYP 340/kg. When compared to June 2016, the prices increased by 38.5 percent for wheat flour, 7.9 percent for rice and 20.3 percent for bulgur. Year-on-year levels indicate significant increases, wheat flour and rice reached 33 and 24 percent, respectively.

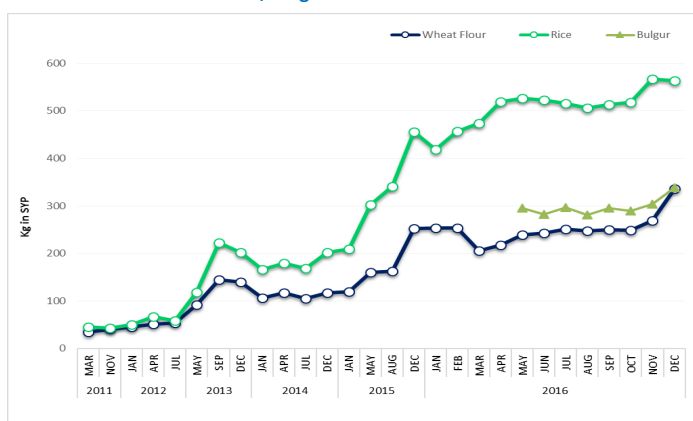
Looking at the pattern of retail prices for rice across all main markets in December, Deir-ez-Zor recorded the highest price, SYP 925/kg, while the lowest price was observed in As-Sweida where 1 kg of rice was sold at SYP 345/kg. Markets in Aleppo registered unprecedented levels of price for wheat flour by SYP 1,065/kg, while Quneitra markets registered the lowest at SYP 205/kg. Similarly, the highest price for bulgur was observed in Deir-ez-Zor markets at SYP 600/kg. While the lowest price was reported from Dar'a markets by SYP 200/kg.

Prices in east Aleppo city witnessed extreme volatility during this month due to the change in control. Remarkable price decreases were observed in the last week of the month following humanitarian access. Nonetheless, market functionality is still poor due to a severe shortage of food supplies and water in addition to high levels of devastation. Therefore, there is substantial dependence on food assistance that acts as the main source of food for many vulnerable households in eastern Aleppo city. As a result of the evacuation from eastern Aleppo city and consequent increase in IDPs in Idleb, an upward trend in prices was observed in the governorate. Moreover, the lean season and the increases in fuel had a notable effect on prices in most of the monitored markets including Deir-ez-Zor city.

2– Bread:

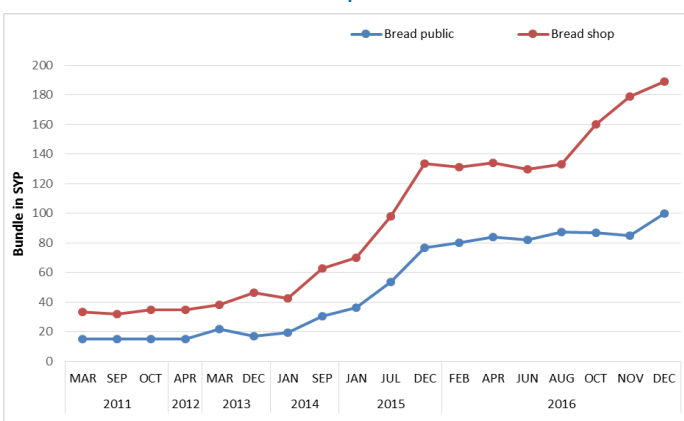
In December 2016, the average nominal retail prices for public (subsidized) bread and commercial (shop) bread were SYP 100/bundle and SYP 190/bundle, respectively. Compared to November 2016, the price of public bread increased by 17.6 percent, while the price of commercial bread increased by 5.6 percent. The remarkable increases for both bread types were mainly due to the poor functionality of bakeries in Aleppo alongside the higher demand of bread in Idleb. On the other hand, a notable decrease was registered in Rural Damascus due to better accessibility especially in hard-to-reach areas. Between June and December 2016, the average retail prices of public and shop bread went up by 22 percent and 45 percent, respectively. Looking at the pattern of retail prices of commercial bread across all main markets during December, Aleppo market registered the highest price at SYP 900/bundle, although there was significant decrease in prices of all food items in east Aleppo city compared to last month. Tartous market recorded the lowest price at SYP 65/bundle. It is worth to mention that the bread assistance provided to households represented one of the main source of food for most households in eastern Aleppo city.

Chart 2: Retail Prices of Rice, Bulgur and Wheat Flour in SYP



Source: WFP Field Offices

Chart 3: Retail Prices of Public and Shop Bread in SYP



3– Diesel and cylinder of butane gas

During the reporting month, the average price of diesel was SYP 410/L and SYP 6,570 for a cylinder of butane gas. Between June and December 2016, the average retail prices of diesel and cylinder of butane gas increased by 20 and 30 percent, respectively. Compared to the same month last year, diesel prices went up by 39 percent and butane gas by 55 percent. During the reporting month, the highest price for diesel was reported in Deir-ez-Zor (besieged area) at SYP 2,500/L and east Aleppo city markets at SYP 3,000/L, a thirteen and sixteen fold more compared to the official price (SYP 180/L).

In eastern Aleppo city, and most of the besieged and high-conflict areas, severe shortages in fuel were reported. Therefore, many households were reported to burn garbage, clothes and furniture to warm their kids. Consequently, the increase in fuel prices as well as restricted transportation and disrupted supply routes will continue to inflate the prices of all main food commodities in active-conflict areas.

C. Wholesale Prices of Main Cereal in Damascus Market

During the reporting month, wholesale prices for the main food commodities were relatively stable despite the slight decrease in the exchange rate of SYP against USD. Wheat grain sold at SYP 8,100/25 kg, bulgur at SYP 7,225/25 kg and white rice at SYP 13,550/25 kg. Compared to November 2016, the wholesale prices of bulgur, rice and wheat remain almost unchanged. Between June 2016 and December 2016, the wholesale prices of wheat increased by five percent, bulgur by three percent and rice by two percent. Year-on-year, the wholesale price of wheat grain increased by 103 percent, bulgur by 66 percent and white rice by 65 percent.

Chart 4: Retail Prices of Diesel and Butane Cylinder in SYP

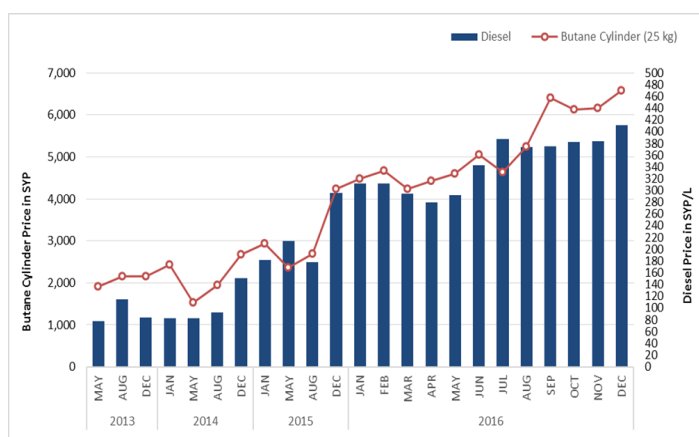
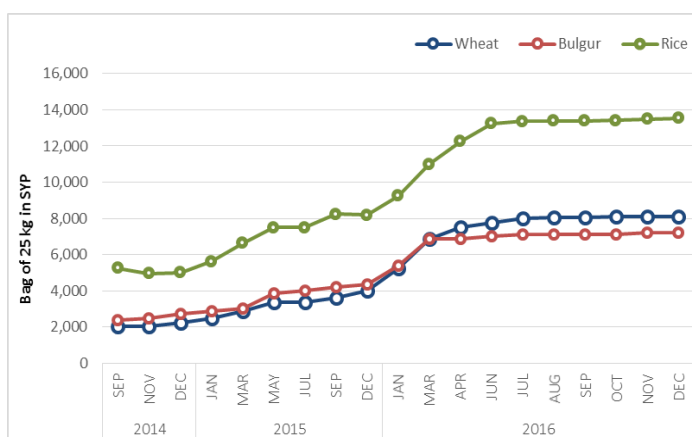


Chart 5: Wholesale Prices for Wheat, Bulgur and Rice in SYP



D. Food Supply to Markets

During the reporting period, supply routes recorded better functionality in east Aleppo city and some hard-to-reach locations in rural Damascus. As a result, lower food prices were observed in markets despite the limited availability. This, also reflects the impact of humanitarian access that reduced the pressure on markets. However in Madaya, east Ghouta and Deir-ez-Zor city, the supply of essential food commodities was disrupted. Therefore, diesel, butane gas, sugar and oil were sparsely available in markets.

On the other hand, in all monitored markets of accessible areas including Tartous, As-Sweida, Homs and Damascus the supply routes were open and commodities were available. Besides, markets in Al-Hasakeh are functioning better and the demand is stabilizing, reflecting the positive impact of food assistance.

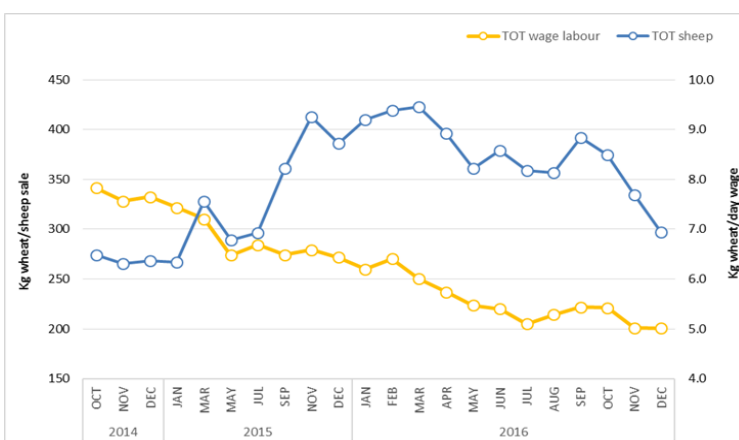
E. Terms of Trade (TOT):²

TOT between wage labour and wheat flour

The purchasing power (measured by terms of trade) of casual labourers remains weak across the country reflecting the low wage rates against rising wheat flour prices. In December 2016, for a whole day of work casual labourers could only buy 5 kg of wheat flour/day, remained unchanged compared to last month but still 7.2 percent less than June levels and 22 percent lower when compared to same month last year.

The nominal average daily wage rate during the reporting period was SYP 1,400. The wage rate is varied between different market locations, ranging from SYP 900 in Al-Hasakeh to SYP 1,900 in Lattakia.

Chart 6: Terms of Trade (TOT)



TOT between sheep and wheat flour

During December, the average price of a two-year old male sheep was SYP 83,215/head. This is 7.6 percent less compared to last month and 9.4 percent less compared to six months ago. The national average TOT between a sheep and wheat flour was 297kg/sheep, which is lower by 11 percent compared to last month and 21.6 percent compared to six months ago. The highest TOT was recorded in Quneitra governorate (494kg/sheep), while the lowest TOT was observed in Aleppo governorate (64kg/sheep).

F. International Market Prices

The FAO Food Price Index averaged 172 points in December 2016, remaining unchanged compared to the November average, but still 11.6 percent more than December 2015 level. Similarly, the Cereal Price Index averaged 142.1 points in December 2016, up by 0.5 percent compared to last month, and 6.3 percent below last year level. In December 2016, the wheat prices on local markets averaged USD 623.3/MT, which is four times higher than the price of wheat in the international market (USD 142/MT).

Data Source: <http://www.fao.org/worldfoodsituation/wfs-home/foodpricesindex/en/> and https://ycharts.com/indicators/us_hard_red_winter_wheat_export_price_gulf_ports

Chart 7: Trends of food and cereals price indices

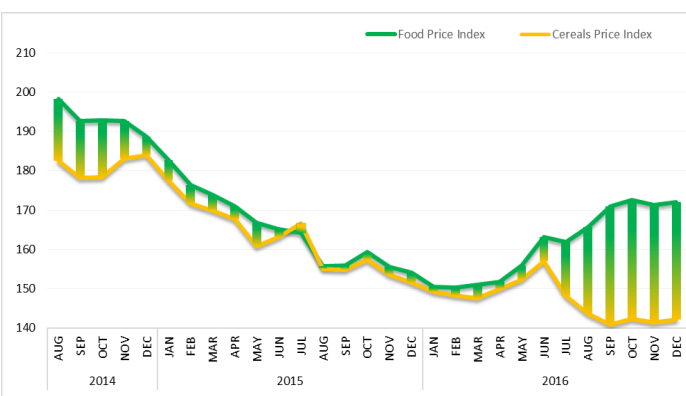
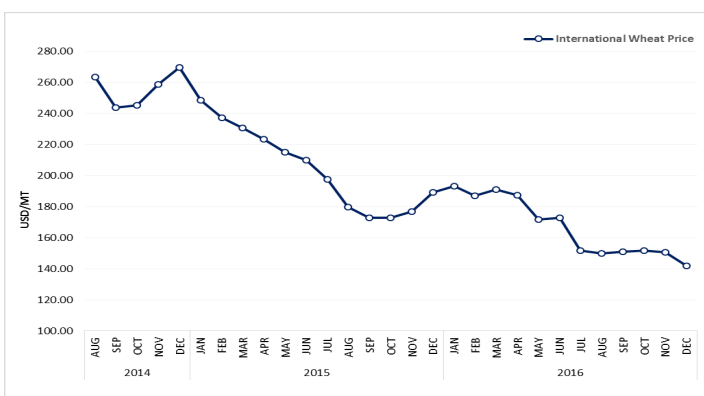


Chart 8: Trends in global wheat prices



2. The TOT are proxy indicators of the purchasing power of households that rely on livestock and/or casual labour as their main source of income for the purchase of cereals from local markets. TOT are important components of food security analysis. Changes in the terms of trade between wages/livestock and staple food commodities are indicative of the trends in purchasing power and the impact on the food security situation of households dependent on food purchases through income from daily wage labour and/or the sale of livestock.

Commodity	Governorate	Current Price	Price change (%)	Price change (%)	Average Change	Average Change	Commodity	Governorate	Current Price	Price change (%)	Price change (%)	Average Change	Average Change
			1M	6 M	1M	6 M				1M	6 M	1M	6 M
Bread Public (1.5 kg)	Aleppo	583	226.9	663.3	↑	↑	Date (kg)	Aleppo	1,500	84.6	64.2	↑	↑
	Damascus	50	-	-	↔	↔		Damascus	975	5.5	8.1	↔	↔
	Dar'a	50	-	-	↔	↔		Dar'a	950	-	10.0	↔	↑
	Deir-ez-Zor	100	-	(15.9)	↔	↓		Deir-ez-Zor	1,450	-	350.0	↔	↑
	Idleb	250	28.3	42.9	↑	↑		Idleb	450	2.9	(10.0)	↔	↔
	Hama	75	-	-	↔	↔		Hama	975	3.1	16.3	↔	↑
	Al- Hasakeh	50	-	-	↔	↔		Al- Hasakeh	550	17.0	50.0	↑	↑
	Homs	50	-	(7.7)	↔	↔		Homs	917	-	14.3	↔	↑
	Lattakia	50	-	-	↔	↔		Lattakia	800	-	14.3	↔	↑
	Quneitra	80	-	-	↔	↔		Quneitra	925	-	5.6	↔	↔
	Ar-Raqqa	100	-	(8.3)	↔	↔		Ar-Raqqa	510	(0.5)	48.3	↔	↑
	Rural Damascus	50	(25.0)	(40.0)	↓	↓		Rural Damascus	1,350	3.8	54.9	↔	↑
	As-Sweida	50	-	-	↔	↔		As-Sweida	925	2.8	9.0	↔	↔
	Tartous	50	-	-	↔	↔		Tartous	750	-	0.9	↔	↔
Bread Shops (1.5 kg)	Aleppo	897	30.4	1,024.0	↑	↑	Diesel (L)	Aleppo	953	19.8	265.8	↑	↑
	Damascus	150	-	-	↔	↔		Damascus	235	7.5	5.4	↔	↔
	Dar'a	150	-	(5.6)	↔	↔		Dar'a	353	15.9	58.7	↑	↑
	Deir-ez-Zor	150	-	(2.9)	↔	↔		Deir-ez-Zor	1,345	-	(9.4)	↔	↔
	Idleb	288	23.2	43.8	↑	↑		Idleb	350	24.0	26.1	↑	↑
	Hama	123	-	(10.3)	↔	↓		Hama	350	26.5	60.4	↑	↑
	Al- Hasakeh	113	-	33.3	↔	↑		Al- Hasakeh	63	-	12.5	↔	↑
	Homs	147	-	20.9	↔	↑		Homs	203	-	19.8	↔	↑
	Lattakia	75	-	9.4	↔	↔		Lattakia	190	2.1	14.3	↔	↑
	Quneitra	133	-	-	↔	↔		Quneitra	278	2.7	15.4	↔	↑
	Ar-Raqqa	130	-	(17.4)	↔	↓		Ar-Raqqa	150	5.6	12.5	↔	↑
	Rural Damascus	150	(16.7)	(30.0)	↓	↓		Rural Damascus	325	(8.3)	0.6	↔	↔
	As-Sweida	75	-	7.1	↔	↔		As-Sweida	338	3.0	35.0	↔	↑
	Tartous	63	-	(6.7)	↔	↔		Tartous	185	-	10.6	↔	↑
Bulgur (kg)	Aleppo	540	31.7	82.5	↑	↑	Fish (Sardine, canned)	Aleppo	354	14.5	37.5	↑	↑
	Damascus	293	-	14.6	↔	↑		Damascus	350	-	40.0	↔	↑
	Dar'a	200	-	0.8	↔	↔		Dar'a	250	-	-	↔	↔
	Deir-ez-Zor	600	0.0	6.7	↔	↔		Deir-ez-Zor	838	(0.4)	24.2	↔	↑
	Idleb	225	12.5	50.0	↑	↑		Idleb	268	-	(14.4)	↔	↓
	Hama	328	4.3	24.7	↔	↑		Hama	247	3.2	16.4	↔	↑
	Al- Hasakeh	425	9.5	27.1	↔	↑		Al- Hasakeh	313	(4.2)	(12.7)	↔	↓
	Homs	257	4.9	33.1	↔	↑		Homs	252	1.4	19.4	↔	↑
	Lattakia	277	(0.4)	22.0	↔	↑		Lattakia	242	(1.3)	0.1	↔	↔
	Quneitra	225	7.1	33.3	↔	↑		Quneitra	245	-	8.9	↔	↔
	Ar-Raqqa	300	-	(28.2)	↔	↓		Ar-Raqqa	300	-	(8.3)	↔	↔
	Rural Damascus	313	12.5	(15.2)	↑	↓		Rural Damascus	288	-	6.3	↔	↔
	As-Sweida	300	-	14.5	↔	↑		As-Sweida	275	-	-	↔	↔
	Tartous	300	-	7.0	↔								

Commodity	Governorate	Current Price	Price change (%)	Price change (%)	Average Change	Average Change	Commodity	Governorate	Current Price	Price change (%)	Price change (%)	Average Change	Average Change		
			1M	6 M	1M	6 M					1M	6 M	1M	6 M	
Bread Public (1.5 kg)	Aleppo	583	226.9	663.3	↑	↑	Date (kg)	Aleppo	1,500	84.6	64.2	↑	↑		
	Damascus	50	-	-	↔	↔		Damascus	975	5.5	8.1	↔	↔		
	Dar'a	50	-	-	↔	↔		Dar'a	950	-	10.0	↔	↑		
	Deir-ez-Zor	100	-	(15.9)	↔	↓		Deir-ez-Zor	1,450	-	350.0	↔	↑		
	Idleb	250	28.3	42.9	↑	↑		Idleb	450	2.9	(10.0)	↔	↔		
	Hama	75	-	-	↔	↔		Hama	975	3.1	16.3	↔	↑		
	Al- Hasakeh	50	-	-	↔	↔		Al- Hasakeh	550	17.0	50.0	↑	↑		
	Homs	50	-	(7.7)	↔	↔		Homs	917	-	14.3	↔	↑		
	Lattakia	50	-	-	↔	↔		Lattakia	800	-	14.3	↔	↑		
	Quneitra	80	-	-	↔	↔		Quneitra	925	-	5.6	↔	↔		
	Ar-Raqqa	100	-	(8.3)	↔	↔		Ar-Raqqa	510	(0.5)	48.3	↔	↑		
	Rural Damascus	50	(25.0)	(40.0)	↓	↓		Rural Damascus	1,350	3.8	54.9	↔	↑		
	As-Sweida	50	-	-	↔	↔		As-Sweida	925	2.8	9.0	↔	↔		
	Tartous	50	-	-	↔	↔		Tartous	750	-	0.9	↔	↔		
Bread Shops (1.5 kg)	Aleppo	897	30.4	1,024.0	↑	↑	Diesel (L)	Aleppo	953	19.8	265.8	↑	↑		
	Damascus	150	-	-	↔	↔		Damascus	235	7.5	5.4	↔	↔		
	Dar'a	150	-	(5.6)	↔	↔		Dar'a	353	15.9	58.7	↑	↑		
	Deir-ez-Zor	150	-	(2.9)	↔	↔		Deir-ez-Zor	1,345	-	(9.4)	↔	↔		
	Idleb	288	23.2	43.8	↑	↑		Idleb	350	24.0	26.1	↑	↑		
	Hama	123	-	(10.3)	↔	↓		Hama	350	26.5	60.4	↑	↑		
	Al- Hasakeh	113	-	33.3	↔	↑		Al- Hasakeh	63	-	12.5	↔	↑		
	Homs	147	-	20.9	↔	↑		Homs	203	-	19.8	↔	↑		
	Lattakia	75	-	9.4	↔	↔		Lattakia	190	2.1	14.3	↔	↑		
	Quneitra	133	-	-	↔	↔		Quneitra	278	2.7	15.4	↔	↑		
	Ar-Raqqa	130	-	(17.4)	↔	↓		Ar-Raqqa	150	5.6	12.5	↔	↑		
	Rural Damascus	150	(16.7)	(30.0)	↓	↓		Rural Damascus	325	(8.3)	0.6	↔	↔		
	As-Sweida	75	-	7.1	↔	↔		As-Sweida	338	3.0	35.0	↔	↑		
	Tartous	63	-	(6.7)	↔	↔		Tartous	185	-	10.6	↔	↑		
Bulgur (kg)	Aleppo	540	31.7	82.5	↑	↑	Fish (Sardine, canned)	Aleppo	354	14.5	37.5	↑	↑		
	Damascus	293	-	14.6	↔	↑		Damascus	350	-	40.0	↔	↑		
	Dar'a	200	-	0.8	↔	↔		Dar'a	250	-	-	↔	↔		
	Deir-ez-Zor	600	0.0	6.7	↔	↔		Deir-ez-Zor	838	(0.4)	24.2	↔	↑		
	Idleb	225	12.5	50.0	↑	↑		Idleb	268	-	(14.4)	↔	↓		
	Hama	328	4.3	24.7	↔	↑		Hama	247	3.2	16.4	↔	↑		
	Al- Hasakeh	425	9.5	27.1	↔	↑		Al- Hasakeh	313	(4.2)	(12.7)	↔	↓		
	Homs	257	4.9	33.1	↔	↑		Homs	252	1.4	19.4	↔	↑		
	Lattakia	277	(0.4)	22.0	↔	↑		Lattakia	242	(1.3)	0.1	↔	↔		
	Quneitra	225	7.1	33.3	↔	↑		Quneitra	245	-	8.9	↔	↔		
	Ar-Raqqa	300	-	(28.2)	↔	↓		Ar-Raqqa	300	-	(8.3)	↔	↔		
	Rural Damascus	313	12.5	(15.2)	↑	↓		Rural Damascus	288	-	6.3	↔	↔		
	As-Sweida	300	-	14.5	↔	↑		As-Sweida	275	-	-	↔	↔		
	Tartous	300	-	7.0	↔	↔		Tartous	325	-	15.9	↔	↑		
Butane Cylinder (10 kg)	Aleppo	19,425	20.2	312.0	↑	↑	Fish (tuna, canned)	Aleppo	497	(3.7)	16.8	↔	↑		
	Damascus	2,863	5.1	27.2	↔	↑		Damascus	463	-	15.6	↔	↑		
	Dar'a	5,475	18.8	28.0	↑	↑		Dar'a	400	-	-	↔	↔		
	Deir-ez-Zor	9,000	10.0	(8.7)	↑	↔		Deir-ez-Zor	1,300	40.9	102.9	↑	↑		
	Idleb	7,900	11.3	26.4	↑	↑		Idleb	300	-	(2.6)	↔	↔		
	Hama	4,800	33.9	52.5	↑	↑		Hama	455	4.2	15.3	↔	↑		
	Al- Hasakeh	3,050	(5.6)	(47.5)	↔	↓		Al- Hasakeh	438	12.9	6.8	↑	↔		
	Homs	2,933	2.9	27.3	↔	↑		Homs	450	9.1	28.8	↔	↑		
	Lattakia	2,850	(1.7)	16.3	↔	↑		Lattakia	363	-	5.3	↔	↔		
	Quneitra	5,275	13.3	23.5	↑	↑		Quneitra	330	-	1.4	↔	↔		
	Ar-Raqqa	6,500	(3.8)	(34.9)	↔	↓		Ar-Raqqa	413	13.9	18.8	↑	↑		
	Rural Damascus	4,250	(0.6)	(36.4)	↔	↓		Rural Damascus	450	-	8.8	↔	↔		
	As-Sweida	3,100	8.8	24.0	↔	↑		As-Sweida	438	-	11.1	↔	↑		
	Tartous	3,500	20.7	34.6	↑	↑		Tartous	375	0.3	1.9	↔	↔		
Cheese (kg)	Aleppo	2,000	(0.7)	6.4	↔	↔	Iodised salt (kg)	Aleppo	316	8.4		↔	↔		
	Damascus	1,550	-	73.1	↔	↑		Damascus	125	-		↔	↔		
	Dar'a	1,200	-	41.0	↔	↑		Dar'a	175	-		↔	↔		
	Deir-ez-Zor	2,250	13.1	85.2	↑	↑		Deir-ez-Zor	325	11.1		↑	↔		
	Idleb	900	-	1.4	↔	↔		Idleb				↔	↔		
	Hama	1,500	3.8	19.2	↔	↑		Hama	98	14.0	21.6	↑	↑		
	Al- Hasakeh	1,150	4.1	66.7	↔	↑		Al- Hasakeh	88	-		↔	↔		
	Homs	1,300	1.0	17.6	↔	↑		Homs	115	5.0	29.4	↔	↑		
	Lattakia	1,375	(3.4)	(2.7)	↔	↔		Lattakia	55	-		↔	↔		
	Quneitra	1,050	5.6	27.8	↔	↑		Quneitra	105	10.0		↑	↔		
	Ar-Raqqa	925	-	14.0	↔	↑		Ar-Raqqa	95	(6.5)		↔	↔		
	Rural Damascus	1,275	2.1	15.9	↔	↑		Rural Damascus	138	-		↔	↔		
	As-Sweida	1,300	9.5	30.0	↔	↑		As-Sweida	150	-		↔	↔		
	Tartous	1,275	-	8.5	↔	↔		Tartous	73	(3.3)		↔	↔		
Chickpeas (kg)	Aleppo	392	2.8	18.4	↔	↑	Lentils (kg)	Aleppo	783	2.1	61.8	↔	↑		
	Damascus	513	-	(6.8)	↔	↔		Damascus	700	-	3.7	↔	↔		
	Dar'a	350	-	26.7	↔	↑		Dar'a	430	3.5	7.5	↔	↔		
	Deir-ez-Zor	1,825	7.5	25.0	↔	↑		Deir-ez-Zor	1,850	28.9	45.0	↑	↑		
	Idleb	278	11.0	11.0	↑	↑		Idleb	475	2.8	(5.0)	↔	↔		
	Hama	500	7.3	24.0	↔	↑		Hama	625	4.5	17.3	↔	↑		
	Al- Hasakeh	688	-	6.3	↔	↔		Al- Hasakeh	638	(11.3)	(18.8)	↓	↓		
	Homs	537	2.6	25.7	↔	↑		Homs	598	5.9	24.2	↔	↑		
	Lattakia	600	-	(0.4)	↔	↔		Lattakia	669	1.1	11.5	↔	↑		
	Quneitra	475	-	6.3	↔	↔		Quneitra	513	-	5.9	↔	↔		
	Ar-Raqqa	625	2.2	15.0	↔	↑		Ar-Raqqa	638	2.6	(20.6)	↔	↓		
	Rural Damascus	550	-	(14.3)	↔	↓		Rural Damascus	763	-	(0.4)	↔	↑		
	As-Sweida	650	1.9	18.3	↔	↑		As-Sweida	825	3.1	17.9	↔	↑		
	Tartous	525	-	(17.6)	↔	↓		Tartous	600	-	(2.0)	↔	↔		
Key:	↑	Prices increase above normal price fluctuation													
	↔	Normal Price Fluctuation													
	↓	Price decrease below normal price fluctuation													

Commodity Price Change (%) - 1M vs 6M														
Commodity	Governorate	Current Price	Price change (%)	Price change (%)	Average Change	Average Change	Commodity	Governorate	Current Price	Price change (%)	Price change (%)	Average Change	Average Change	
			1M	6 M	1M	6 M				1M	6 M			
Meat (beef, kg)	Aleppo	3,781	(1.6)	42.1	↔	↑	Tea (kg)	Aleppo	6,294	17.2	141.3	↑	↑	
	Damascus	3,350	-	8.1	↔	↔		Damascus	3,375	0.8	5.4	↔	↔	
	Dar'a	3,350	-	3.3	↔	↔		Dar'a	19,500	450.0	457.1	↑	↑	
	Deir-ez-Zor	4,200	(0.8)	3.3	↔	↔		Deir-ez-Zor	11,150	(11.5)	12.5	↓	↑	
	Idleb	2,800	12.0	12.0	↑	↑		Idleb	3,350	-	3.1	↔	↔	
	Hama	3,500	-	19.8	↔	↑		Hama	3,625	5.8	9.2	↔	↔	
	Al- Hasakeh	2,550	(3.3)	(10.5)	↔	↓		Al- Hasakeh	3,450	(2.2)	23.5	↔	↑	
	Homs	3,533	3.3	21.7	↔	↑		Homs	3,433	5.2	48.6	↔	↑	
	Lattakia	3,313	(0.4)	(4.0)	↔	↔		Lattakia	2,700	26.2	(5.5)	↑	↔	
	Quneitra	3,275	-	13.3	↔	↑		Quneitra	3,500	-	1.4	↔	↔	
	Ar-Raqqa	2,350	(1.0)	(6.0)	↔	↔		Ar-Raqqa	3,650	(1.5)	2.3	↔	↔	
	Rural Damascus	3,550	-	2.2	↔	↔		Rural Damascus	3,750	(6.0)	2.1	↔	↔	
	As-Sweida	3,325	-	(3.6)	↔	↔		As-Sweida	3,525	-	17.5	↔	↑	
	Tartous	3,438	1.9	4.3	↔	↔		Tartous	2,600	-	(17.7)	↔	↓	
Oil (L)	Aleppo	1,419	(11.7)	165.3	↓	↑	Tomato paste (kg)	Aleppo	1,619	12.5	130.5	↑	↑	
	Damascus	750	5.3	13.6	↔	↑		Damascus	835	3.1	28.5	↔	↑	
	Dar'a	725	-	3.1	↔	↔		Dar'a	435	11.1	46.3	↑	↑	
	Deir-ez-Zor	2,400	47.1	64.7	↑	↑		Deir-ez-Zor	3,825	(15.6)	57.5	↓	↑	
	Idleb	663	6.0	12.9	↔	↑		Idleb	350	4.7	16.7	↔	↑	
	Hama	875	1.0	(7.7)	↔	↔		Hama	1,050	(2.6)	11.4	↔	↑	
	Al- Hasakeh	625	(4.9)	(18.1)	↔	↓		Al- Hasakeh	600	-	(9.1)	↔	↔	
	Homs	678	7.2	64.3	↔	↑		Homs	1,060	2.9	21.1	↔	↑	
	Lattakia	769	2.5	5.1	↔	↔		Lattakia	750	-	30.4	↔	↑	
	Quneitra	788	0.8	15.2	↔	↑		Quneitra	440	(0.4)	55.0	↔	↑	
	Ar-Raqqa	850	(2.6)	(12.9)	↔	↓		Ar-Raqqa	613	1.0	(31.3)	↔	↓	
	Rural Damascus	875	-	6.7	↔	↔		Rural Damascus	850	7.1	45.1	↔	↑	
	As-Sweida	800	-	1.6	↔	↔		As-Sweida	500	2.5	6.6	↔	↔	
	Tartous	738	-	10.3	↔	↑		Tartous	713	(1.8)	19.1	↔	↑	
Parsley (packet)	Aleppo	198	-	597.0	↔	↑	Tomatoe (kg)	Aleppo	291	7.3	127.7	↔	↑	
	Damascus	50	2.1	72.6	↔	↑		Damascus	207	37.7	38.6	↑	↑	
	Dar'a	38	-	-	↔	↔		Dar'a	250	-	-	↔	↔	
	Deir-ez-Zor	150	7.1	(33.3)	↔	↓		Deir-ez-Zor	1,490	5.6	37.1	↔	↑	
	Idleb	50	-	12.5	↔	↑		Idleb	500	-	(12.9)	↔	↓	
	Hama	50	-	10.0	↔	↑		Hama	208	24.1	42.5	↑	↑	
	Al- Hasakeh	75	-	12.5	↔	↑		Al- Hasakeh	313	5.1	2.5	↔	↔	
	Homs	73	46.7	68.6	↑	↑		Homs	208	38.3	71.6	↑	↑	
	Lattakia	50	-	25.0	↔	↑		Lattakia	200	-	84.7	↔	↑	
	Quneitra	40	85.0	166.7	↑	↑		Quneitra	158	9.0	46.1	↔	↑	
	Ar-Raqqa	88	-	15.0	↔	↑		Ar-Raqqa	450	16.7	46.2	↑	↑	
	Rural Damascus	55	-	41.3	↔	↑		Rural Damascus	235	45.0	4.1	↑	↔	
	As-Sweida	65	30.0	125.6	↑	↑		As-Sweida	200	14.3	14.3	↑	↑	
	Tartous	50	5.0	40.6	↔	↑		Tartous	219	0.6	65.2	↔	↑	
Pasta (kg)	Aleppo	569	32.0	-	↑	↔	Unskilled Labor wage	Aleppo	1,425	15.0	46.7	↑	↑	
	Damascus	500	-	-	↔	↔		Damascus	1,500	-	-	↔	↔	
	Dar'a	475	6.0	-	↔	↔		Dar'a	1,050	2.0	15.0	↔	↑	
	Deir-ez-Zor	1,400	10.3	(86.2)	↑	↓		Deir-ez-Zor	1,150	-	19.0	↔	↑	
	Idleb	-	-	-	↔	↔		Idleb	1,700	-	(1.7)	↔	↔	
	Hama	370	5.8	13.1	↔	↑		Hama	1,600	10.0	26.7	↑	↑	
	Al- Hasakeh	338	(1.9)	-	↔	↔		Al- Hasakeh	900	-	4.5	↔	↔	
	Homs	395	14.0	55.0	↑	↑		Homs	1,067	5.9	52.6	↔	↑	
	Lattakia	257	0.6	-	↔	↔		Lattakia	1,900	5.5	18.8	↔	↑	
	Quneitra	255	(0.9)	-	↔	↔		Quneitra	1,250	4.2	4.2	↔	↔	
	Ar-Raqqa	625	-	-	↔	↔		Ar-Raqqa	1,600	-	(7.5)	↔	↔	
	Rural Damascus	625	(3.8)	-	↔	↔		Rural Damascus	1,500	-	-	↔	↔	
	As-Sweida	475	-	-	↔	↔		As-Sweida	1,500	-	15.4	↔	↑	
	Tartous	272	(1.2)	-	↔	↔		Tartous	1,650	1.4	10.0	↔	↑	
Rice (kg)	Aleppo	690	(2.8)	72.2	↔	↑	Wheat Flour (kg)	Aleppo	1,063	28.4	608.8	↑	↑	
	Damascus	425	-	6.3	↔	↔		Damascus	280	2.0	15.5	↔	↑	
	Dar'a	488	-	-	↔	↔		Dar'a	213	-	-	↔	↔	
	Deir-ez-Zor	925	(1.4)	(10.0)	↔	↔		Deir-ez-Zor	595	3.5	119.4	↔	↑	
	Idleb	475	5.6	5.6	↔	↔		Idleb	213	11.8	41.7	↑	↑	
	Hama	518	5.7	21.7	↔	↑		Hama	225	12.5	25.1	↑	↑	
	Al- Hasakeh	838	(1.8)	2.2	↔	↔		Al- Hasakeh	263	-	25.2	↔	↑	
	Homs	495	8.2	31.5	↔	↑		Homs	217	5.8	22.1	↔	↑	
	Lattakia	500	2.6	9.6	↔	↔		Lattakia	246	3.4	3.4	↔	↔	
	Quneitra	425	-	(5.6)	↔	↔		Quneitra	205	-	-	↔	↔	
	Ar-Raqqa	650	(3.8)	(10.1)	↔	↓		Ar-Raqqa	363	(5.3)	(2.5)	↔	↔	
	Rural Damascus	500	5.0	0.2	↔	↔		Rural Damascus	325	-	(20.0)	↔	↓	
	As-Sweida	345	1.5	15.0	↔	↑		As-Sweida	263	5.0	(4.5)	↔	↔	
	Tartous	525	-	5.0	↔	↔		Tartous	233	-	(3.6)	↔	↔	
Sheep 2Y old Male	Aleppo	68,125	(28.8)	(45.3)	↓	↓	White beans (kg)	Aleppo	628	5.5	-	↔	↔	
	Damascus	86,625	3.3	1.6	↔	↔		Damascus	475	-	-	↔	↔	
	Dar'a	70,000	(2.9)	11.7	↔	↑		Dar'a	375	6.3	26.8	↔	↑	
	Deir-ez-Zor	N/A	-	-	↔	↔		Deir-ez-Zor	1,850	6.7	(68.2)	↔	↓	
	Idleb	77,500	(3.1)	2.0	↔	↔		Idleb	-	-	-	↔	↔	
	Hama	80,500	(4.9)	1.2	↔	↔		Hama	565	4.5	21.2	↔	↑	
	Al- Hasakeh	75,000	-	12.5	↔	↑		Al- Hasakeh	813	(12.1)	-	↓	↔	
	Homs	81,000	2.0	31.3	↔	↑		Homs	540	5.3	19.9	↔	↑	
	Lattakia	75,000	(3.2)	(9.1)	↔	↔		Lattakia	657	(1.0)	-	↔	↔	
	Quneitra	101,250	-	(6.9)	↔	↔		Quneitra	393	-	-	↔	↔	
	Ar-Raqqa	57,500	(8.1)	(25.4)	↔	↓		Ar-Raqqa	850	(1.5)	-	↔	↔	
	Rural Damascus	92,500	(7.3)	4.0	↔	↔		Rural Damascus	535	(2.7)	-	↔	↔	
	As-Sweida	71,500	-	(12.6)	↔	↓		As-Sweida	525	-	-	↔	↔	
	Tartous	67,650	(5.5)	(27.6)	↔	↓		Tartous	525	-	-	↔	↔	
Sugar (kg)	Aleppo	2,066	2.8	488.5	↔	↑	Yogurt (kg)	Aleppo	803	(1.4)	65.7	↔	↑	
	Damascus	425	3.1	(1.4)	↔	↔		Damascus	313	-	47.9	↔	↑	
	Dar'a	438	-	17.4	↔	↑		Dar'a	250	-	10.0	↔	↑	
	Deir-ez-Zor	2,150	(4.1)	72.5	↔	↑		Deir-ez-Zor	1,050	10.0	65.0	↑	↑	
	Idleb	450	2.9	5.9	↔	↔		Idleb	213	16.9	11.8	↑	↑	
	Hama	425	4.5	12.4	↔	↑		Hama	510	9.8	23.4	↔	↑	
	Al- Hasakeh	538	(12.2)	(20.2)	↓	↓		Al- Hasakeh	200	5.6	-	↔	↔	
	Homs	377	5.7	66.6	↔	↑		Homs	275	4.7	22.3	↔	↑	
	Lattakia	419	1.5	9.8	↔	↔		Lattakia	265	(0.5)	32.3	↔	↑	
	Quneitra	425	2.3	3.3	↔	↔		Quneitra	220	-	27.4	↔	↑	
	Ar-Raqqa	538	(3.2)	(16.7)	↔	↓		Ar-Raqqa	188	(1.9)	25.0	↔	↑	
	Rural Damascus	500	6.3	(7.9)	↔	↔		Rural Damascus	323	1.3	26.3	↔	↑	
	As-Sweida	423	(0.6)	(17.5)	↔	↓		As-Sweida	275	-	10.0	↔	↑	
	Tartous	425	2.9	-	↔	↔		Tartous	269	(2.0)	13.2	↔	↑	