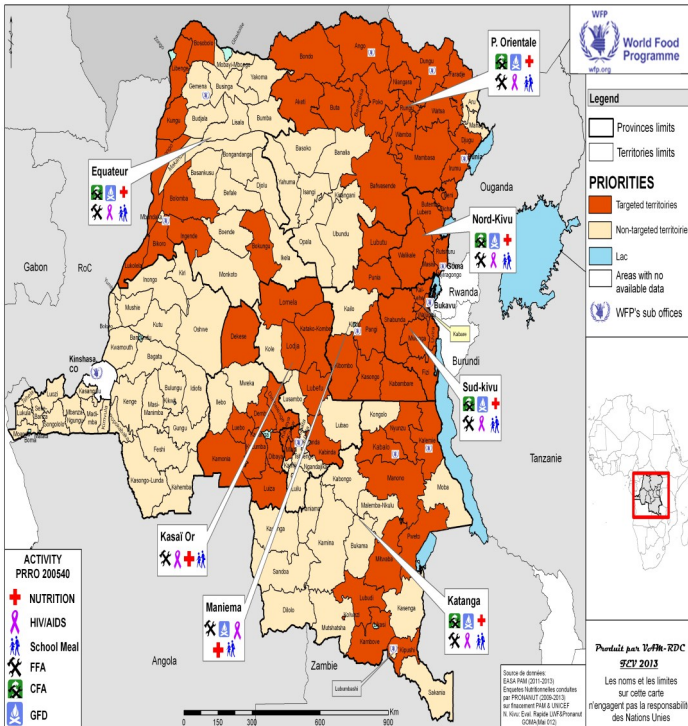




World Food Programme

wfp.org

Democratic Republic of Congo



Highlights

- The Regional Director Chris Nikoi visited Kinshasa CO from 04 to 07 May. He met all the CO staff as well as representatives from OCHA, UNICEF and UNHCR. He also met MONUSCO DSRSG Mustapha Soumaré and donors. This visit highlighted that the OMJ regional strategy will address the unique needs of DRC.
- The implementation of the Prioritization Exercise has begun with distribution to conflict affected vulnerable IDPs in North Kivu and also reflected in the recently approved budget revision.
- In a meeting held on 07 May some donors, (ECHO, USAID, Belgium and Canada), were updated on the implementation status of the Prioritization activities and as well participated to a reflection on the current humanitarian situation the camps and sites in North Kivu.

Situation Update

- In Goma, food distributions are targeting the most vulnerable, following an intensive sensitization of people who have not received food assistance. WFP's main focus now is to assist the recently displaced people and beneficiaries who have just returned home to secure areas. WFP operations in support of CAR refugees have proceeded smoothly.
- According to UNHCR report, the total number of CAR refugees in DRC as of 06 May 2014 is 61,374. This includes in camp (478 in Mboti camp/Ango in the Province Orientale and 27,495 in Equateur) and out of camps (26,722 in Equateur Province and 6,000 refugees in Bas Uele and Bondo territories of Province Orientale still unconfirmed).
- As of end of April, the number of IDPs has been reduced by 11 percent (from 2.9 to 2,634,872) as a result of reduced armed activities in the Kivus. With the start of the dry-season in May, roads will become more practicable and access to beneficiaries in the East will improve. However, the military activities will intensify and the number of displacements is likely to increase.

In numbers



2.6 million people displaced

6.7 million people in need of food assistance

3.6 million beneficiaries to be assisted by WFP from July 2013 to December

Funding Update:

WFP Requires USD20.9 million over the next six months.

Food Security Cluster

The food security cluster requires USD750,000 million for the next six months

Logistics Cluster

The Logistics Cluster requires USD1.5 million for the next six months

WFP Response



Food Assistance

- As of 08 May, targeted food distributions for the most vulnerable food insecure people among older caseload IDPs have been completed at 33 out of 35 sites in North Kivu. 533 mt of food were distributed to 63,006 vulnerable IDPs.
- As of 08 May, an inter-cluster evaluation mission composed of OCHA, UNHCR, FAO and other partners under the leadership of WFP, is ongoing in Shamwana, Kiambi and Manono territories. The objective of the mission is to evaluate the humanitarian situation in these areas which have been affected by armed conflict.
- On 28 April, WFP, in partnership with CARITAS, began food distributions to 27,000 IDPs in Ngungu (Masisi Territory). The people were displaced between August 2013 and February 2014 as a result of militia attacks on their villages in Masisi. A total of 243 mt of food comprising maize grain, pulses, vegetable oil and salt was distributed over two weeks. This intervention was designed to improve the food security of vulnerable families and to reduce acute malnutrition levels among children under five years of age, pregnant and nursing women.



Logistics

- In April, WFP received a total of 5,760 MT of commodities from Dar-es-Salam and distributed 5,675 mt of food to beneficiaries. 2,600 mt of the food received was allocated to Goma.
- Following an assessment of Lubutu airstrip by a Logistics Cluster engineer, WFP is currently making arrangements with partners and local authorities for an official inauguration ceremony. This airstrip has been rehabilitated by German Agro Action (AAA) with Howard Buffett foundation.

Clusters



Food Security Cluster

- The results of a food security assessment conducted by WFP and the Minister of Agriculture between December 2013 and January 2014 in the South Kivu Province were released in Bukavu. According the study, 47 percent of households in the province have poor or borderline food

consumption. The most affected territories are Shabunda, Walungu, Mwenga and Kalehe.



Logistics Cluster

- Following the rehabilitation of the Karuba-Ngungu road in Masisi Territory, WFP is currently delivering 243 mt of food for 27,000 IDPs in Ngungu. The food delivery was undertaken by WFP trucks as the roads are not usable by commercial trucks. Another road awaiting urgent rehabilitation is the Bihambwe – Kibabi – Kinigi route in Masisi Territory.

Partnerships

- Partnership, especially among the Rome based agencies (RBAs), NGOs and Government has galvanized innovative solutions to food insecurity in the DRC which are directly contributing to the benchmarks set out in the regional peace and security framework. Because of this partnership and collaboration, the DRC RBA country team won the RBA award in 2014.

Resourcing Update

- Following the Prioritisation Exercise, WFP requires USD20.9 million for the next six months, for high priority, life-saving interventions.
- WFP requires USD11.6 million (gross requirement) to cover the needs of over 57,000 C.A.R refugees in and out of the camps, as well as safety net programs for the host communities until December 2014.

Contacts

Martin Olsen: WFP DRC Country Director,
email: martin.ohlsen@wfp.org,
Claude Kalinga, WFP DRC PI Officer ,
email: claud.kalinga@wfp.org

Democratic Republic of Congo

<http://www.wfp.org/countries/congo-democratic-republic>