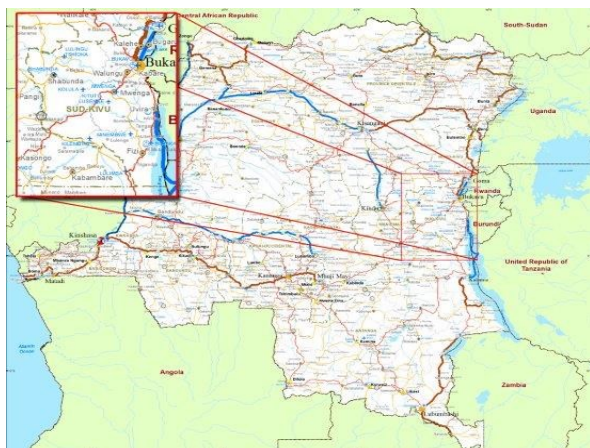




World Food Programme

DRC:

Burundi Refugee Assistance



DRC: Burundi Refugee Assistance

In numbers



13,584 newly arrived Burundian refugees

10,800 host family members

3 provinces affected

Funding Update:

IR-PREP \$ 264,000

IR-EMOP \$ 1.38 M

CERF funding \$ 1.5 M

Highlights

- Because of ongoing political unrest in Burundi, thousands are fleeing into neighbouring countries.
- As of 20 July 13,584 Burundian refugees have been registered in DRC. The majority are in South Kivu. Approximately 500 are in Katanga province, and just over 60 are in Maniema province.

Situation Update

- Close to 7,332 refugees are residing in the Lusenda camp and 5,217 are living with host families. A total of 656 are in transit centres and other temporary sites.
- As the capacity of Lusenda camp is full, refugees are no longer being transferred.
- Biometric registration shows that out of 12,695 refugees in South Kivu 53% are female/girls and 47% are male/boys. Out of the total 65% are children and 50% are under 12 years old.

WFP Response

- Food assistance to all Burundian refugees and host families is ongoing.

Food Assistance



- WFP is cooperating closely with UNHCR and partner NGOs for the food distributions.
- Refugees and host families are receiving monthly rations to meet their urgent food needs.
- WFP in collaboration with NGO partner World Vision has distributed 30-day rations of food to more than 5,500 host family members in Fizi and Uvira territories, amounting to 95 tonnes.



Logistics

- The UN Humanitarian Air Service (UNHAS) is supporting the humanitarian community in DRC. If

Clusters



Logistics Cluster

- One mobile storage unit and 5 MT of High Energy Biscuits have been positioned in Uvira for immediate responses.
- Provision of one mobile storage unit in Lusenda/Fizi to support humanitarian partners Rebuild Hope for Africa and UNWomen.

Partnerships

- UNHCR and OCHA are leading the response with support from WFP.
- Partner NGOs African Initiative for Relief and Development (AIRD), World Vision and Caritas are delivering the food assistance to refugees, host families, as well as nutrition supplements.

Resourcing Update

- An IR-prep of USD \$ 264,000 has been approved for increased storage capacity, rapid assessments, vulnerability analysis, and market surveys.
- An IR-EMOP of USD \$ 1.38 million will respond to the needs of 20,000 people over the course of three months.
- A joint CERF funding request from the UN agencies involved in the response has been granted. WFP is receiving USD \$ 1.5 million to alleviate the alarming food security situation amongst the refugees and host population.

Contacts



- Olivier Le Blanc (External Relations, Reports and Communications Officer) olivier.leblanc@wfp.org / +243 81 55 52 108 / +243 81 70 11 465
- Camilla Kleiberg Jensen (External Relations, Reports and Communications Officer) camilla.jensen@wfp.org / +243 81 70 06 841
- Claude Kalinga (Communication Officer), claudio.kalinga@wfp.org / +243 817 006 714