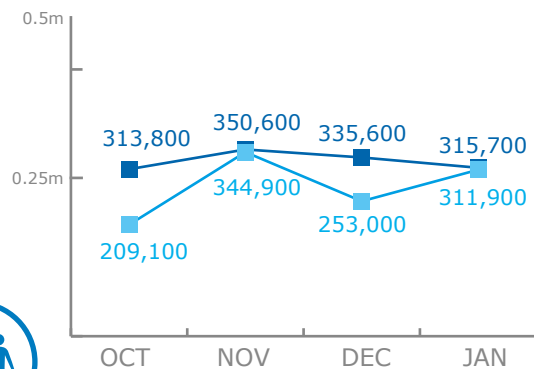


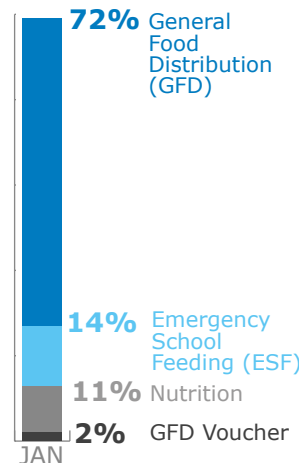
BENEFICIARIES
Regional EMOP 200799

627,600 people assisted in January
in C.A.R. & the Region



■ Assisted in C.A.R.
■ Assisted in Cameroon, Chad, DRC, Rep. of Congo

BY ACTIVITY in C.A.R.*



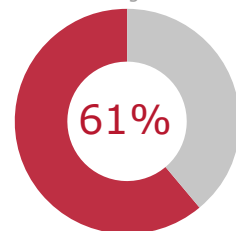
*Percentages of activities include overlaps, i.e. beneficiaries that have been assisted with two or more different activities.

FUNDING



NET FUNDING REQUIREMENTS

REGIONAL Emergency Operation 200799
March - August 2016



Net Funding Requirements: **52.8m**
Total Requirements: **86.3m**

Source: WFP, 02 March 2016

PROJECT FUNDING STATUS

Special Operation (SO) UNHAS 200804
Jan 2015 - Dec 2016

59.8%

18.1m Received | 30.4m Total Required

Special Operation (SO) 200605 LOGS & ETC
Jul 2013 - Apr 2016

45%

6.7m Received | 14.9m Total Required

Source: WFP, 01 March 2016

OPERATIONAL CHALLENGES



Pre-positioning



Insecurity



Humanitarian Access



Corridor Congestion

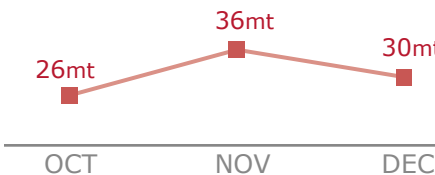


Resources

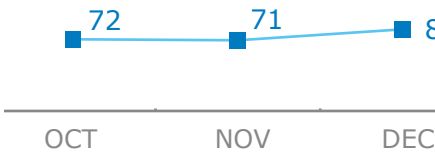
COMMON SERVICES



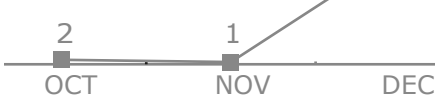
Passengers Transported



Light Cargo moved



Organizations Served



People Evacuated

REGIONAL REFUGEE RESPONSE PLAN 2016 REQUIREMENTS



29%

WFP SHARE OF APPEAL
USD100.6m

TOTAL APPEAL
USD345.7m

C.A.R. HRP 2016 has not been released yet.

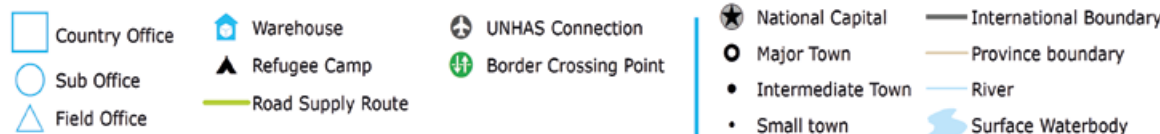
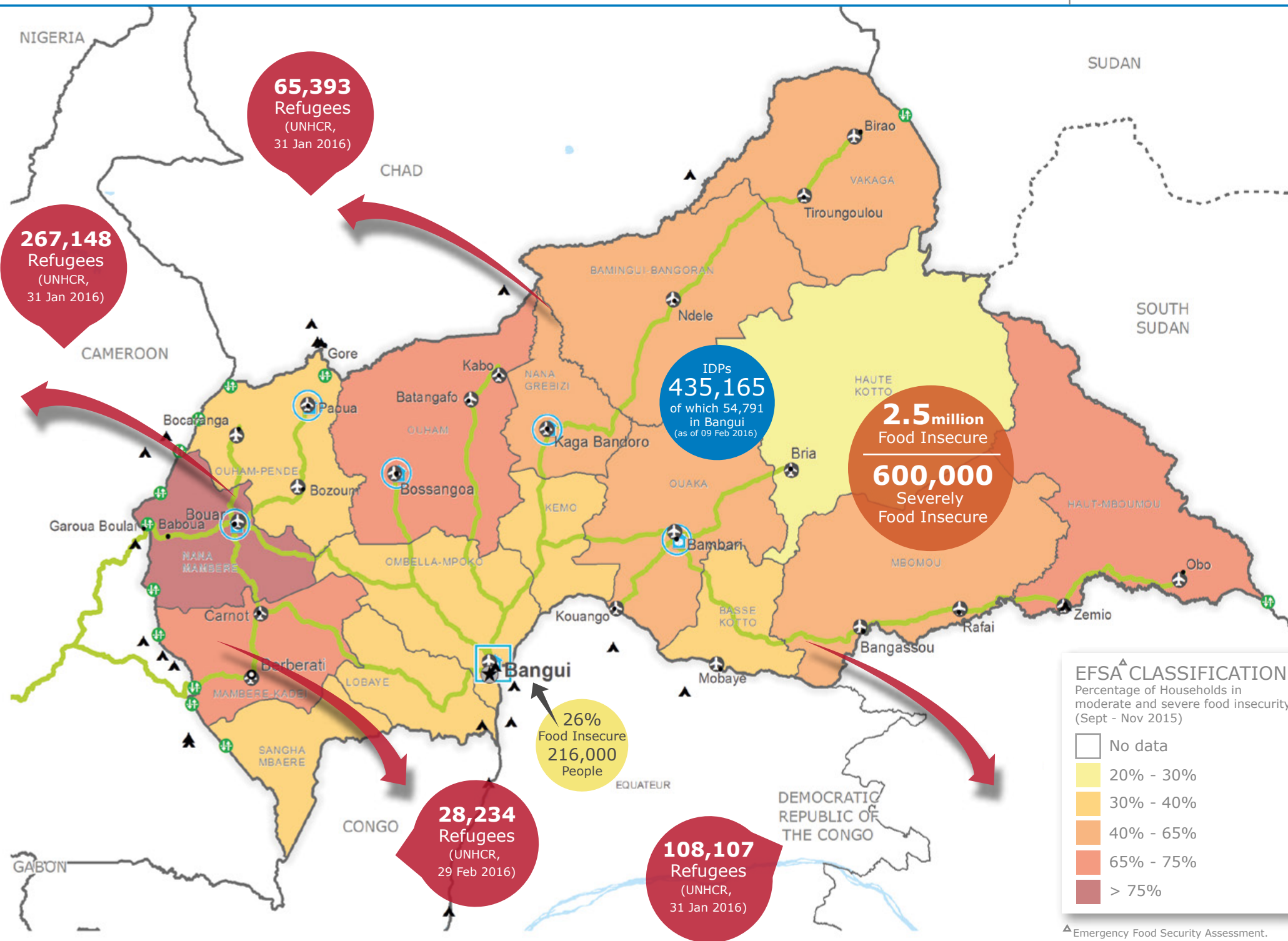
WFP LEVEL 2 EMERGENCY
SINCE 02 JUNE 2015

Check the **COUNTRY BRIEF**

<http://www.wfp.org/countries/central-african-republic>

Produced by the WFP **Operations Centre (OPSCEN)**

This dashboard is based on best available information at the time of production. Future updates may vary as new information becomes available.



Sources: WFP, UNGIWG, GAUL, GLCSC, OCHA, UNHCR.
The designations employed and the presentation of material in the map(s) do not imply the expression of any opinion on the part of WFP concerning the legal or constitutional status of any country, territory, city or sea, or concerning the delimitation of its frontiers or boundaries.
© World Food Programme 2016