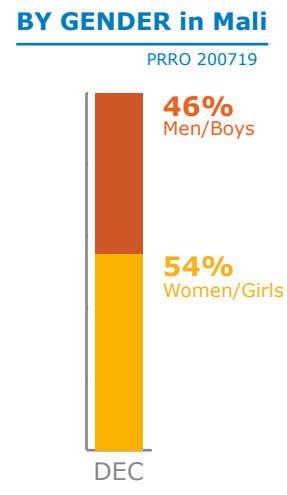
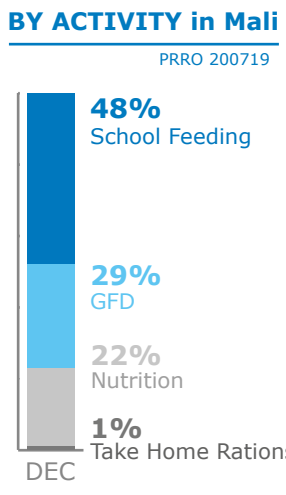
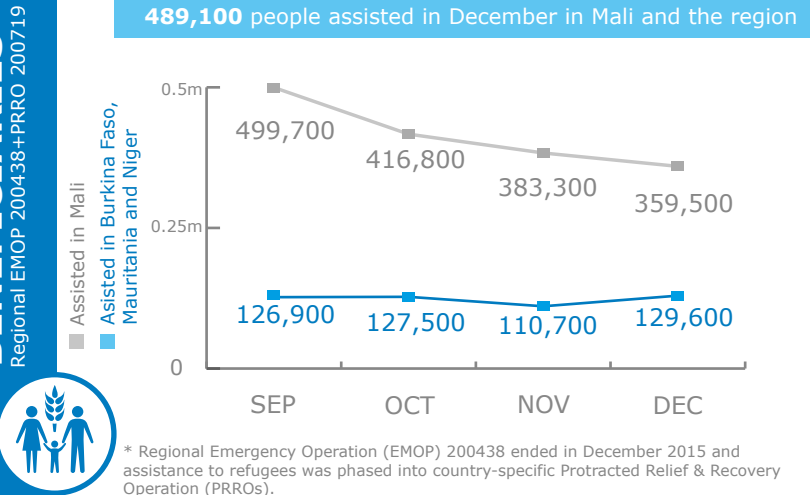
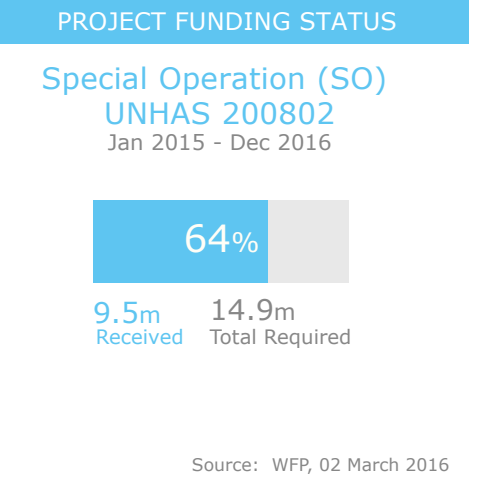
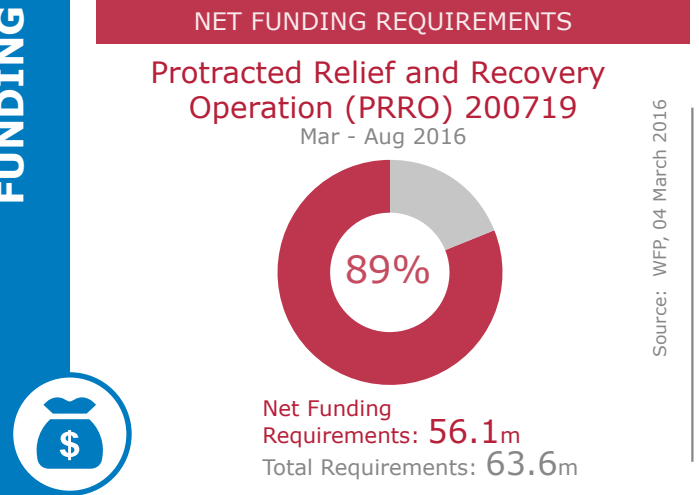


### BENEFICIARIES\*

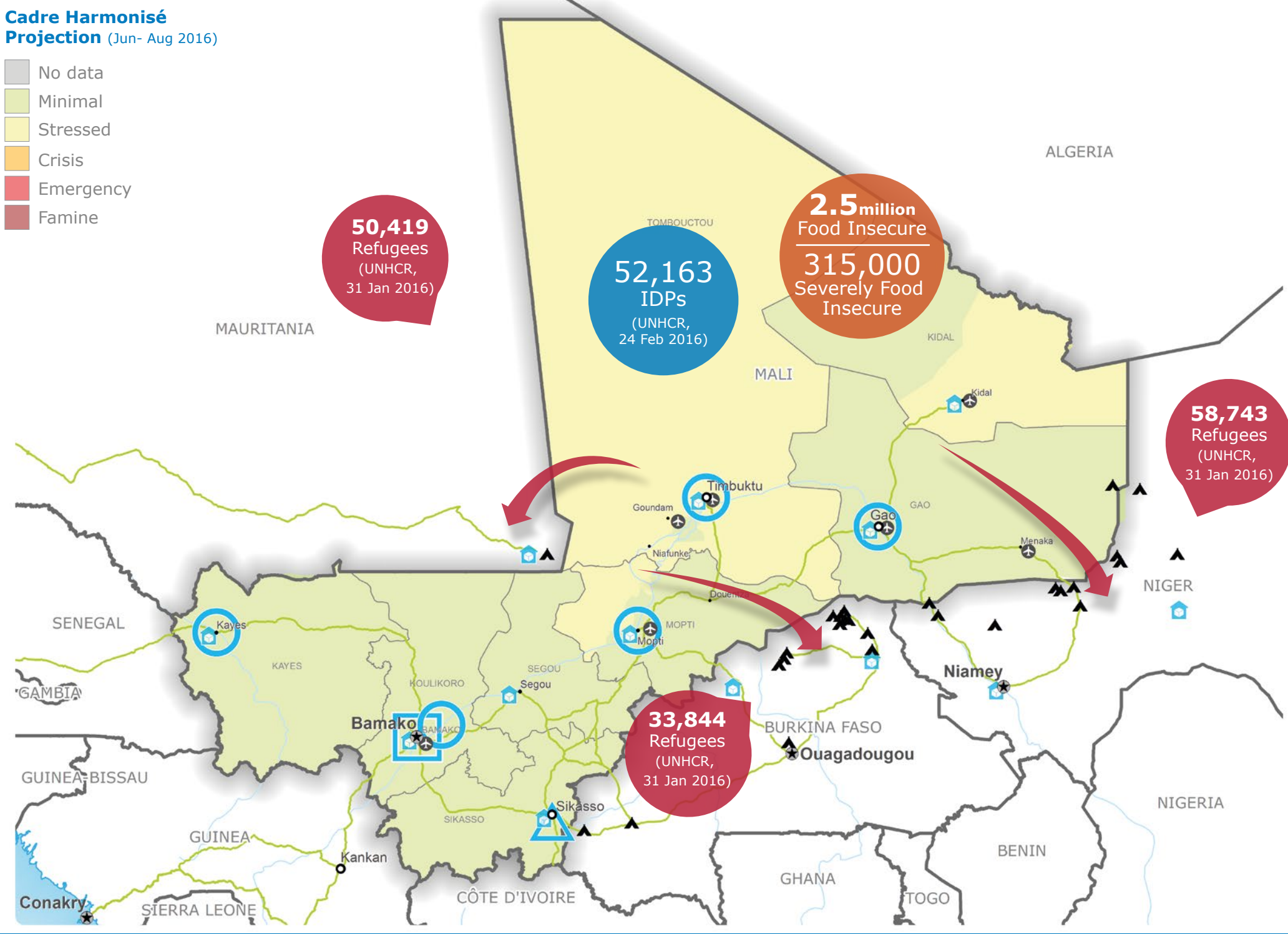


### FUNDING



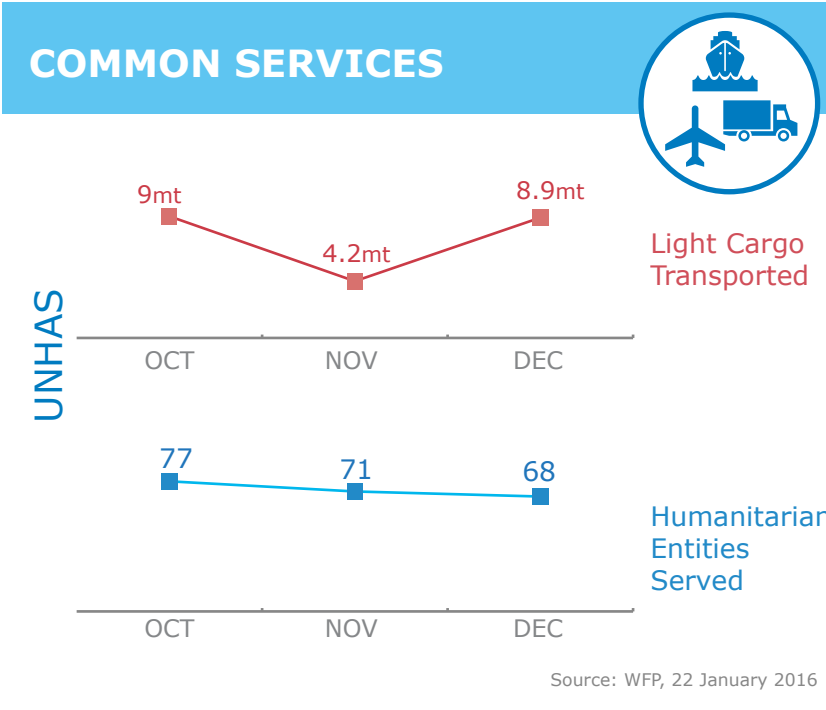
### Cadre Harmonisé Projection (Jun- Aug 2016)

- No data
- Minimal
- Stressed
- Crisis
- Emergency
- Famine



### OPERATIONAL CHALLENGES

- Humanitarian Access
- Insecurity
- Resources



### WFP LEVEL 2 EMERGENCY

SINCE 12 JANUARY 2012

Check the **COUNTRY BRIEF** and **SITUATION REPORT**  
<http://www.wfp.org/countries/mali>



- Country Office
- Sub Office
- Field Office
- Warehouse
- UNHAS Connection
- Road Supply Route
- National Capital
- Major Town
- Intermediate Town
- Small Town
- International boundary
- Region boundary
- River
- Surface Waterbody

Sources: WFP, UNGIWG, GAUL, GLSCS, OCHA, UNHCR, Cadre Harmonisé (Nov 2015). The designations employed and the presentation of material in the map(s) do not imply the expression of any opinion on the part of WFP concerning the legal or constitutional status of any country, territory, city or sea, or concerning the delimitation of its frontiers or boundaries.  
© World Food Programme 2016

Produced by the WFP **Operations Centre (OPSCEN)**  
This dashboard is based on best available information at the time of production. Future updates may vary as new information becomes available.