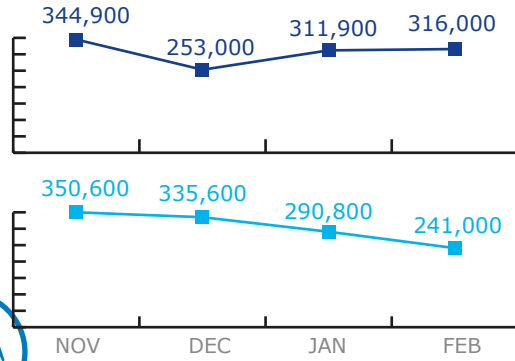


BENEFICIARIES

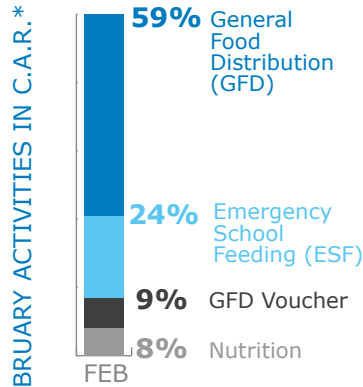
Reg EMOP 200799

557,000 people assisted in February in C.A.R. & the Region



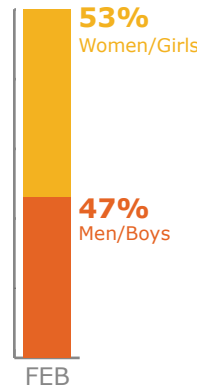
■ Assisted in C.A.R.  
■ Assisted in Cameroon, Chad, DRC, Rep. of Congo

By Activity in C.A.R.



\*Percentages of activities include overlaps, i.e. beneficiaries that have been assisted with two or more different activities.

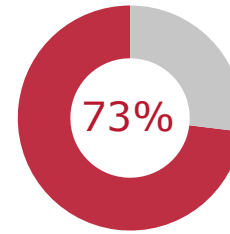
By Gender in C.A.R.



FUNDING

NET FUNDING REQUIREMENTS

REGIONAL Emergency Operation 200799  
May - October 2016

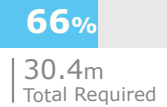


Net Funding Requirements: 59.7m  
Total Requirements: 82m

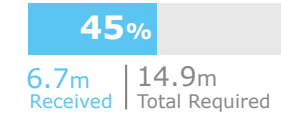
Source: WFP, 20 April 2016

PROJECT FUNDING STATUS

Special Operation (SO) UNHAS 200804  
Jan 2015 - Dec 2016

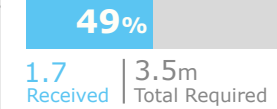


Special Operation (SO) 200605 LOGS & ETC  
Jul 2013 - Apr 2016



Source: WFP, 19 April 2016

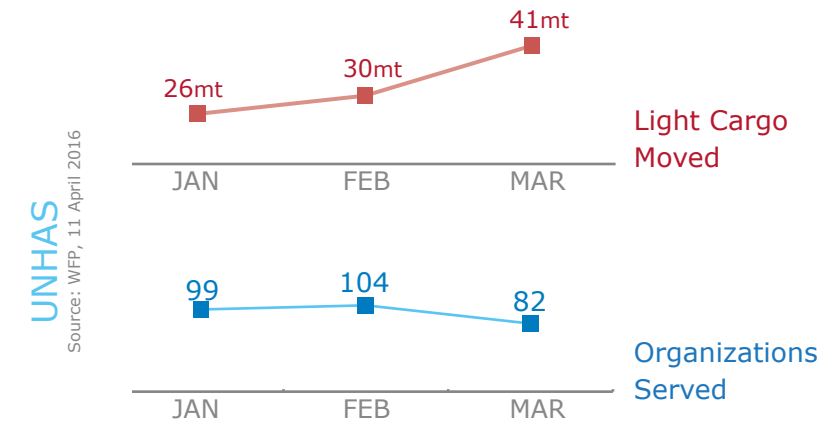
Reg. Special Operation (SO) 200934 Logistics  
Optimization of supply corridors  
Jan - Dec 2016



OPERATIONAL CHALLENGES

- Insecurity
- Humanitarian Access
- Resources

COMMON SERVICES



2016 CAR HUMANITARIAN RESPONSE PLAN REQUIREMENTS

TOTAL APPEAL: 531.5m

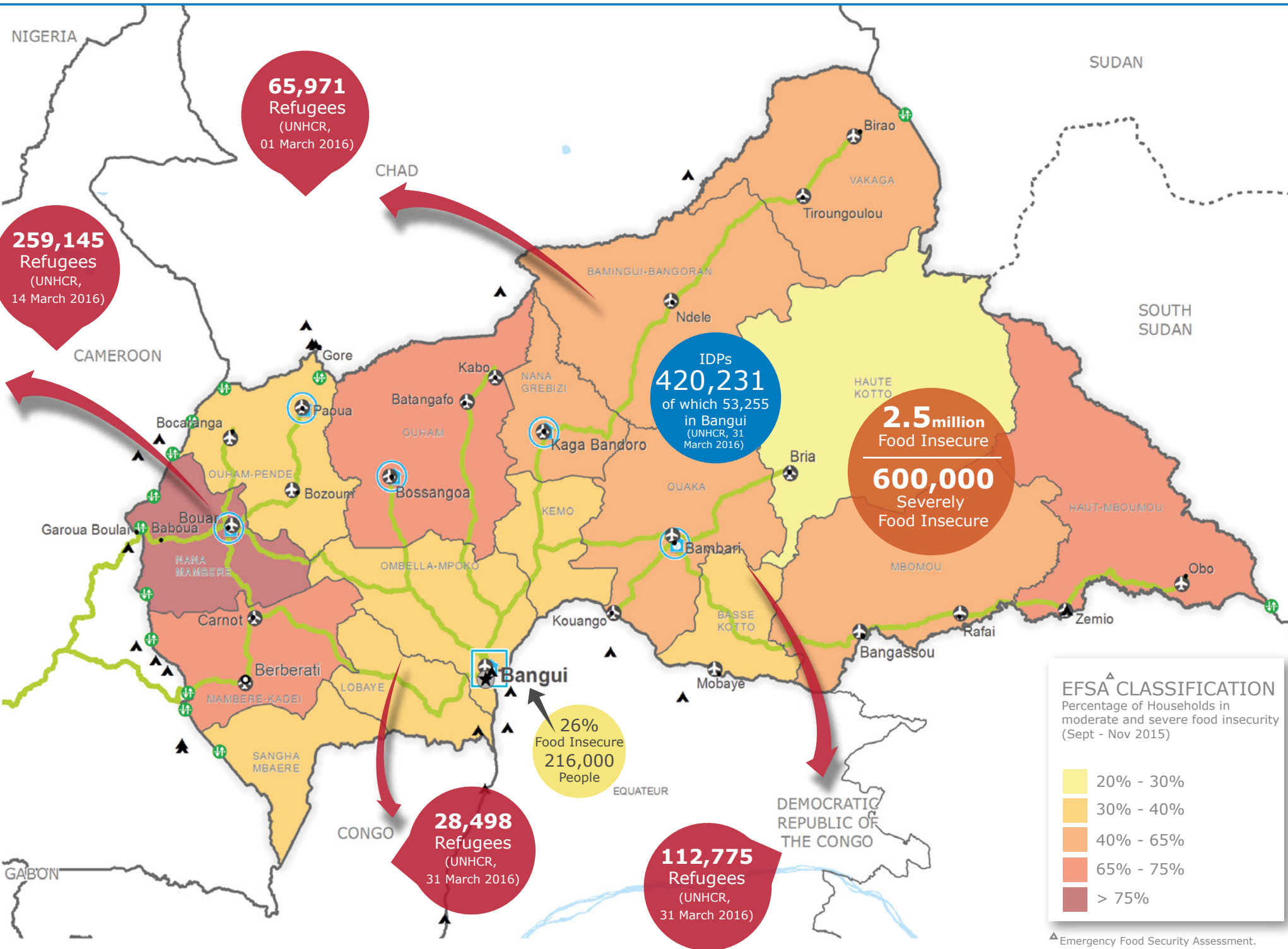


WFP LEVEL 2 EMERGENCY  
SINCE 02 JUNE 2015

Check the **COUNTRY BRIEF** and **SITUATION REPORT**  
<http://www.wfp.org/countries/central-african-republic>

Produced by the WFP **Operations Centre (OPSCEN)**

This dashboard is based on best available information at the time of production. Future updates may vary as new information becomes available.



- Country Office
- Sub Office
- Field Office
- Warehouse
- Refugee Camp
- Road Supply Route
- UNHAS Connection
- Border Crossing Point
- National Capital
- Major Town
- Intermediate Town
- Small town
- International Boundary
- Province boundary
- River
- Surface Waterbody

Sources: WFP, UNGIWG, GAUL, GLCSC, OCHA, UNHCR.  
The designations employed and the presentation of material in the map(s) do not imply the expression of any opinion on the part of WFP concerning the legal or constitutional status of any country, territory, city or sea, or concerning the delimitation of its frontiers or boundaries.  
© World Food Programme 2016