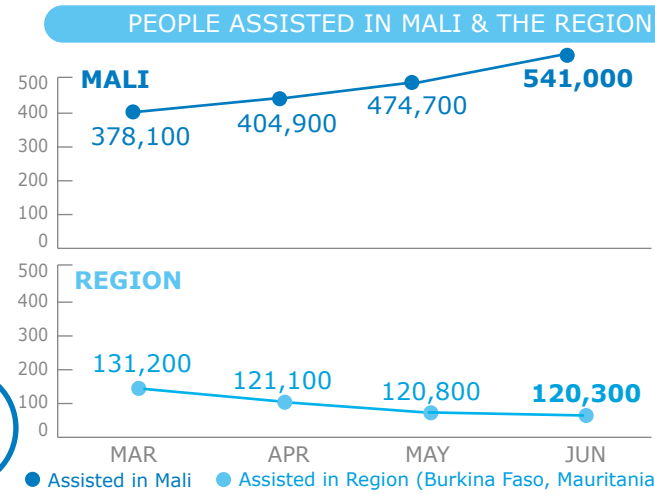


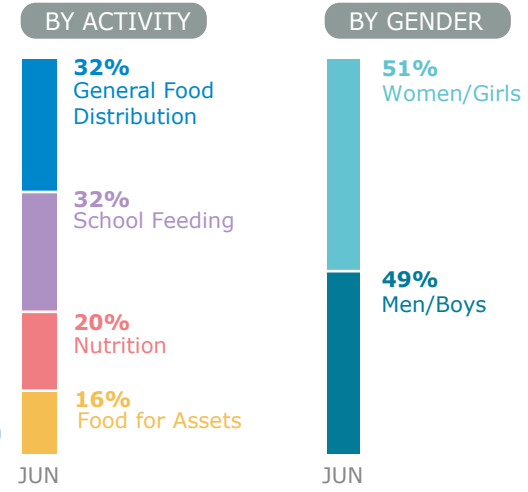
### BENEFICIARIES

Mali PRRO + Regional response



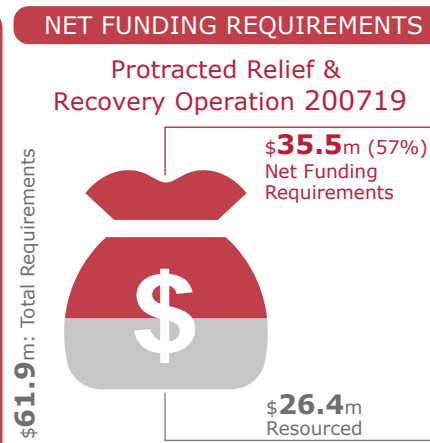
### OPERATIONAL PROFILE

MALI PRRO 200719

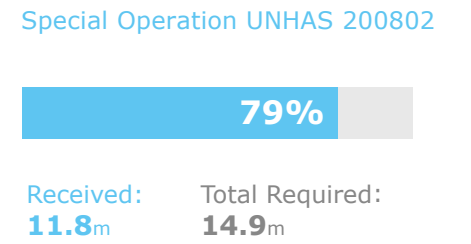


### FUNDING

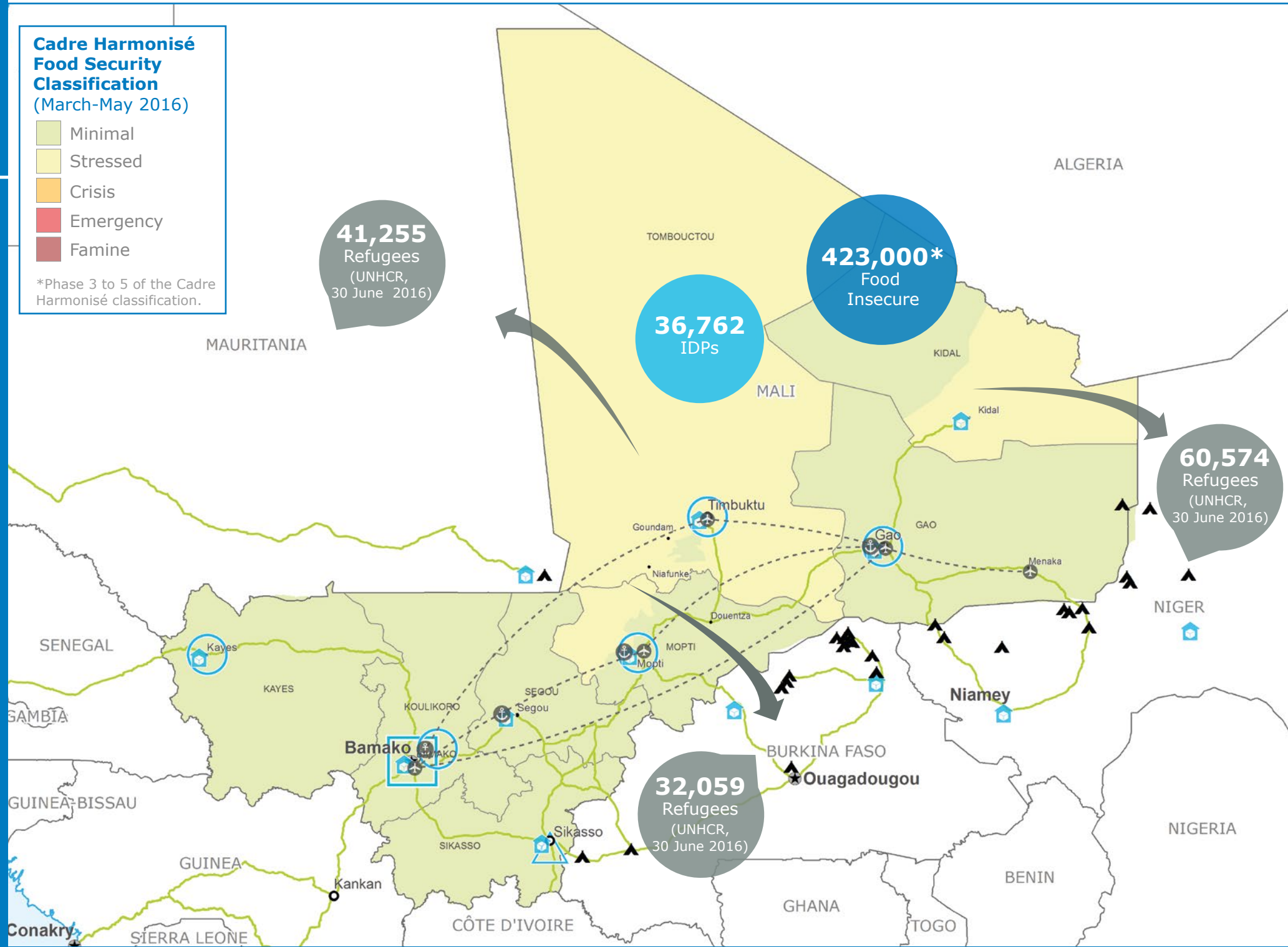
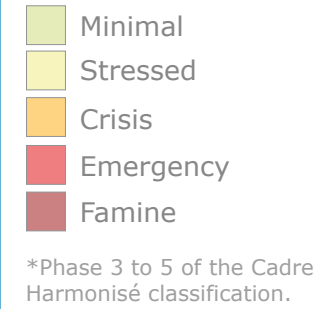
Six Month Outlook



### PROJECT FUNDING STATUS



### Cadre Harmonisé Food Security Classification (March-May 2016)



### OPERATIONAL CHALLENGES

Insecurity

Humanitarian Access

Resources

### 2016 FUNDING of WFP-LED or CO-LED CLUSTERS



### WFP LEVEL 2 EMERGENCY

SINCE 12 JANUARY 2012

Check the **COUNTRY BRIEF**  
<http://www.wfp.org/countries/mali>

**2A** PRRO 200719  
<http://documents.wfp.org/stellent/groups/public/documents/ep/WFP284303.pdf>

Produced by the WFP **Operations Centre (OPSCEN)** jointly with Country Office and Regional Bureau Dakar

This dashboard is based on best available information at the time of production. Future updates may vary as new information becomes available.

- Country Office
- Warehouse
- National Capital
- International boundary
- Sub Office
- UNHAS Connection
- Major Town
- Region boundary
- Field Office
- Road Supply Route
- Intermediate Town
- River
- Small Town
- Surface Waterbody

Sources: WFP, UNGIWG, GAUL, GLCSC, OCHA, UNHCR, Cadre Harmonisé (March 2016). The designations employed and the presentation of material in the map(s) do not imply the expression of any opinion on the part of WFP concerning the legal or constitutional status of any country, territory, city or sea, or concerning the delimitation of its frontiers or boundaries.  
 © World Food Programme 2016

Source: OCHA FTS, 26 July 2016

Source: WFP, 26 July 2016