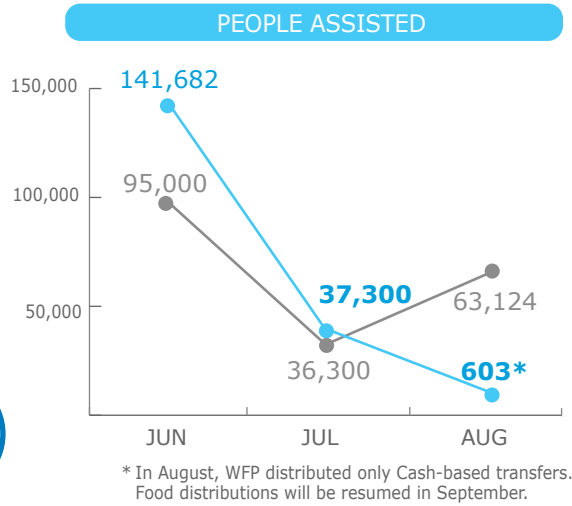


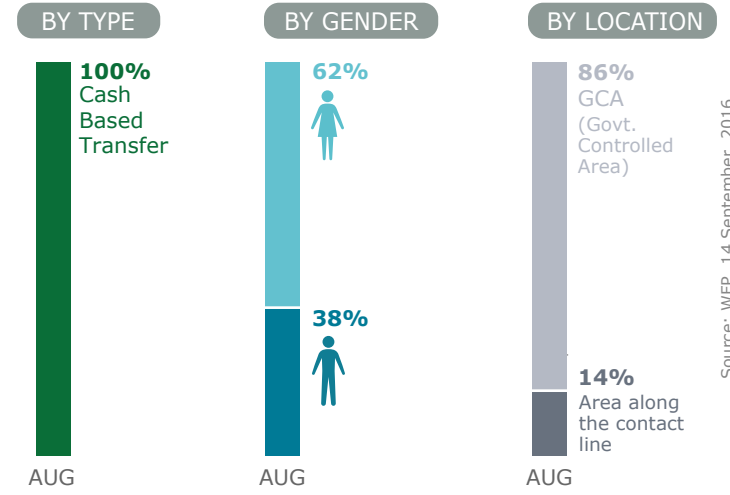
## BENEFICIARIES

Emergency Operation 200765



Source: WFP, 14 September 2016

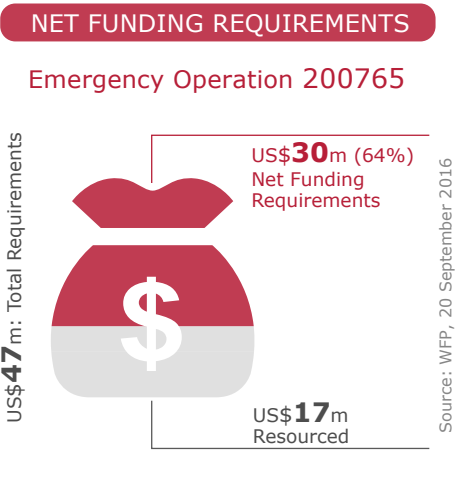
## OPERATIONAL PROFILE



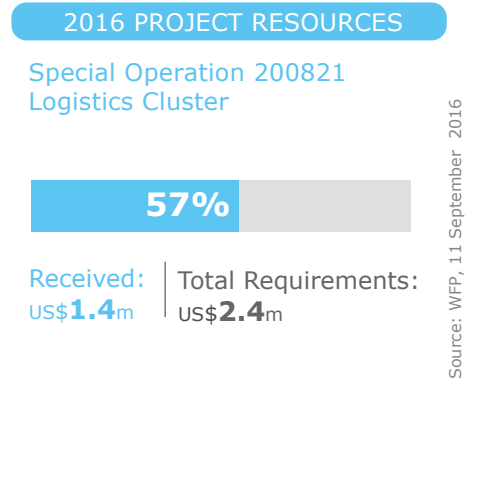
Source: WFP, 14 September 2016

## FUNDING

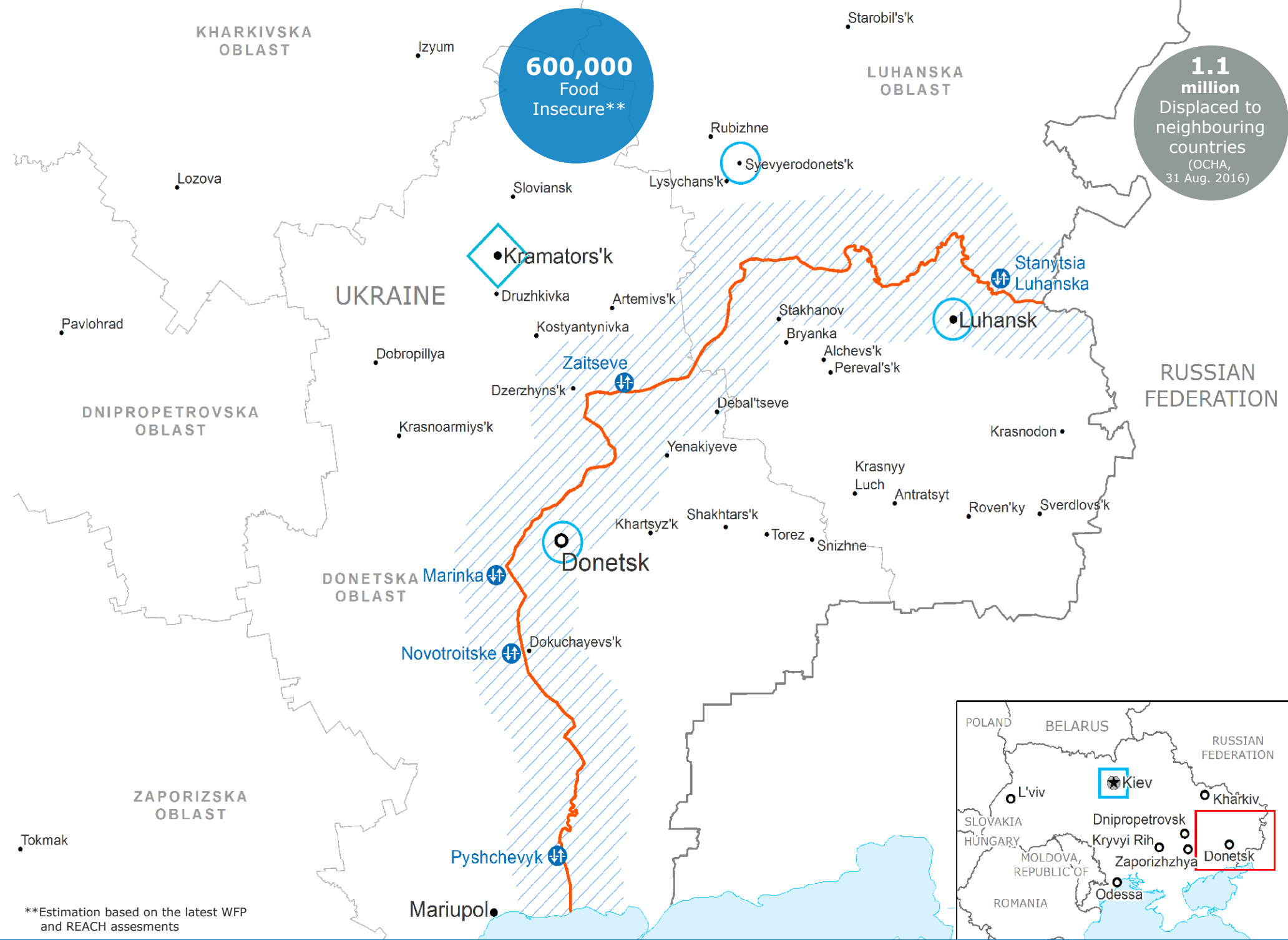
Sept 2016 - Feb 2017



Source: WFP, 20 September 2016



Source: WFP, 11 September 2016



\*\*Estimation based on the latest WFP and REACH assessments

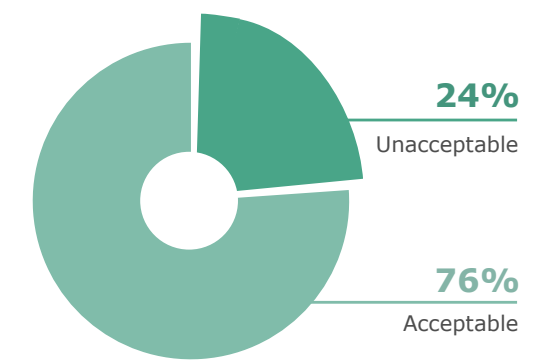
- Country Office
- Area Office
- Sub Office
- Contact Line
- Area along the contact line
- Crossing Point
- National Capital
- Major Town
- Intermediate Town
- Small Town
- International Boundary
- Oblast Boundary

Sources: WFP, UNGIWG, GAUL, OCHA, GLCSC  
The designations employed and the presentation of material in the map(s) do not imply the expression of any opinion on the part of WFP concerning the legal or constitutional status of any country, territory, city or sea, or concerning the delimitation of its frontiers or boundaries.  
© World Food Programme 2016

## OPERATIONAL CHALLENGES

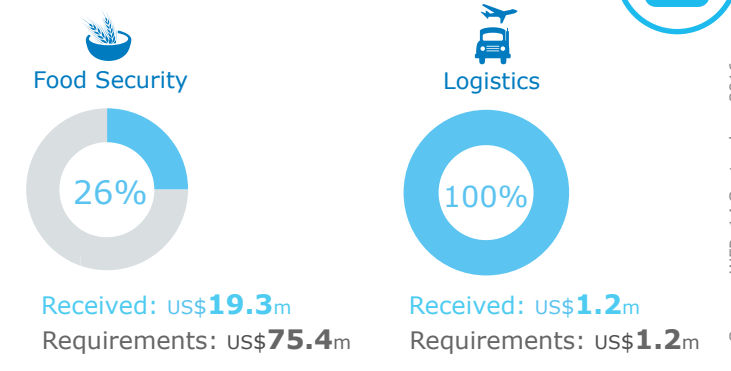
- Insecurity
- Humanitarian Access
- Resources

## FOOD CONSUMPTION LEVELS IN DONBAS



For more information: **WFP Food Security Update**  
<http://documents.wfp.org/stellent/groups/public/documents/ena/wfp285351.pdf>

## 2016 FUNDING of WFP-LED or CO-LED CLUSTERS



## WFP LEVEL 2 EMERGENCY

SINCE 26 NOVEMBER 2014

For more information, see the **SITUATION REPORT** and **COUNTRY BRIEF** [www.wfp.org/countries/ukraine](http://www.wfp.org/countries/ukraine)

Produced by the WFP **Operations Centre (OPSCEN)** jointly with Country Office and Regional Bureau Cairo  
This dashboard is based on best available information at the time of production. Future updates may vary as new information becomes available.

Source: WFP Food Security Update, June 2016

Source: WFP, 14 September 2016 and OCHA, 26 August 2016