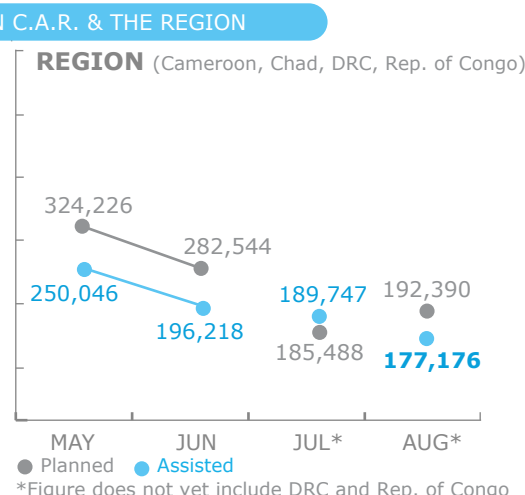
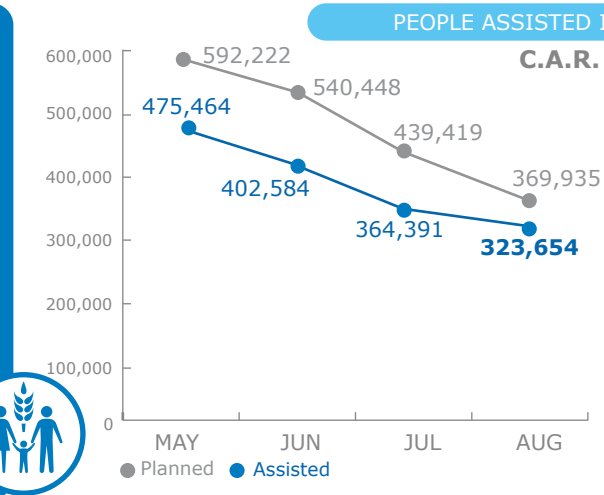
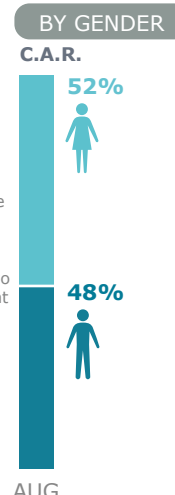
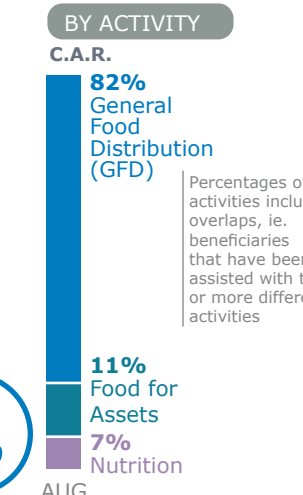


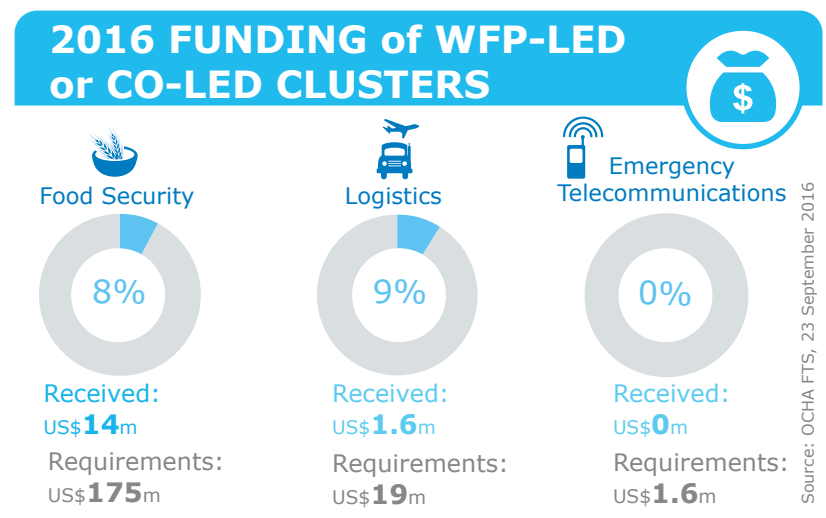
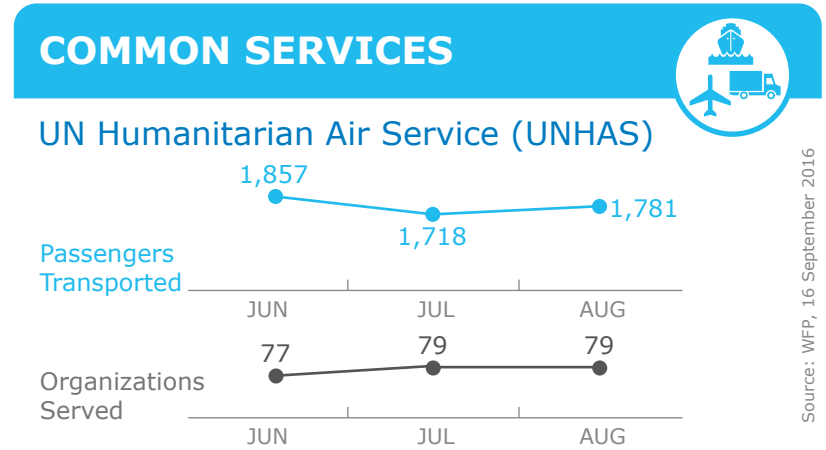
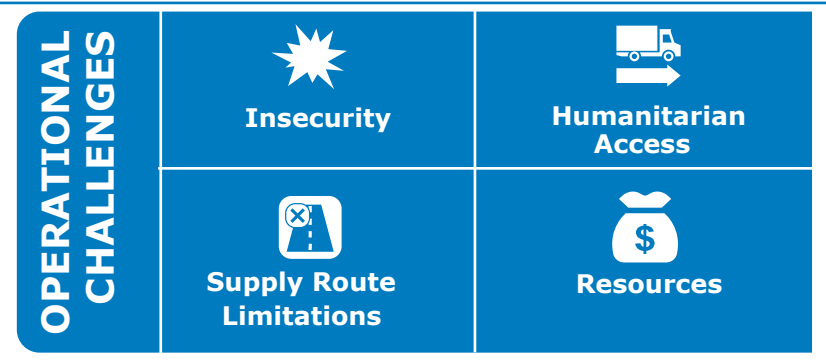
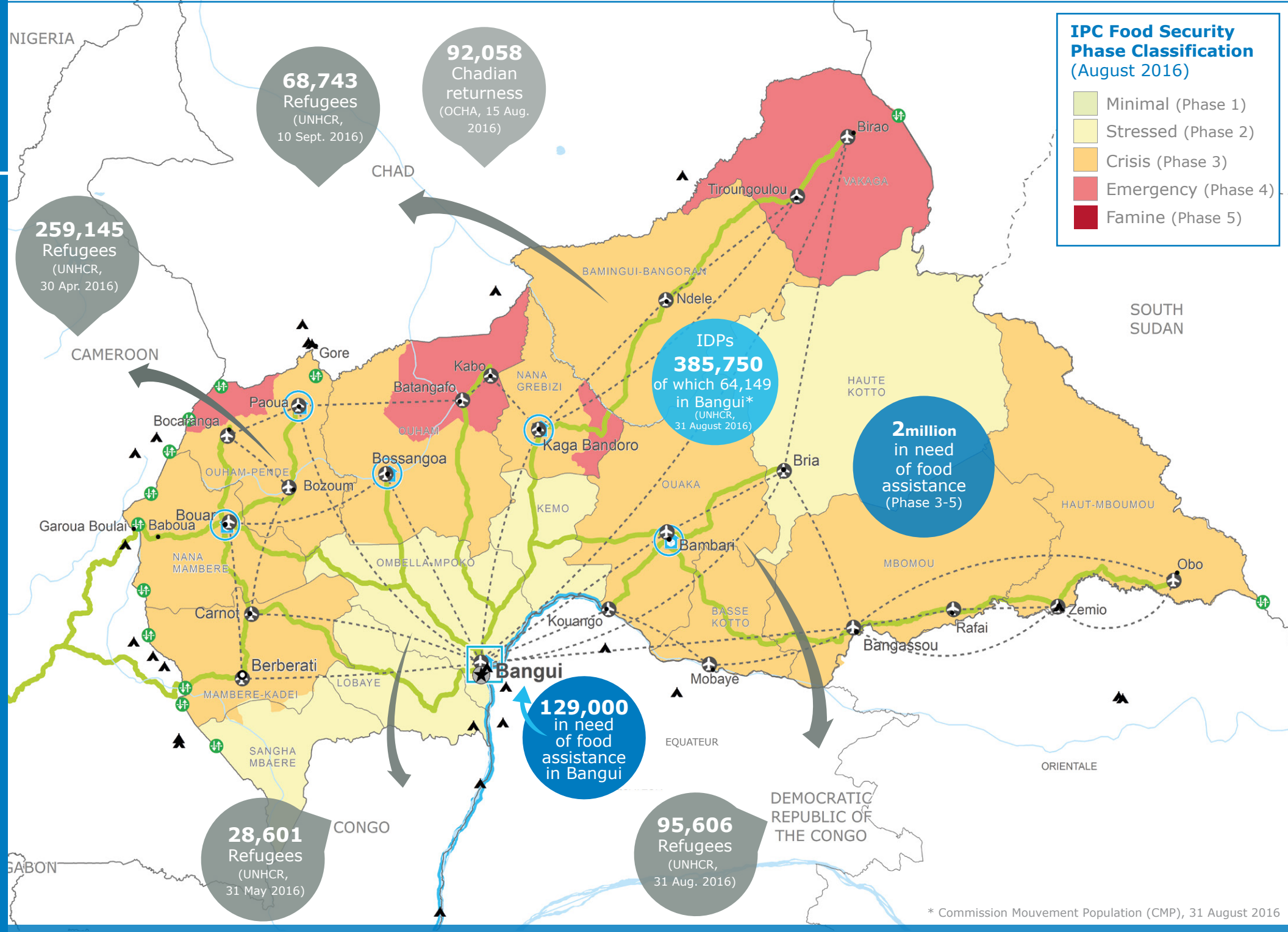
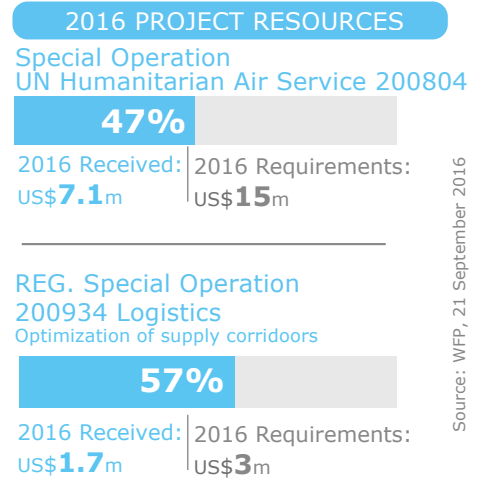
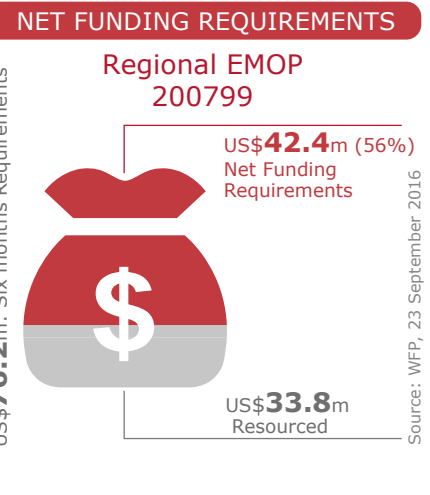
BENEFICIARIES
Reg. - Emergency Operation 200799



OPERATIONAL PROFILE



FUNDING
Sep 2016 - Aug 2017



WFP LEVEL 2 EMERGENCY
SINCE 02 JUNE 2015

For more information, see the **SITUATION REPORT** and **COUNTRY BRIEF** www.wfp.org/countries/central-african-republic

2A REGIONAL EMOP 200799
<http://documents.wfp.org/stellent/groups/public/documents/ep/WFP284303.pdf>

Produced by the WFP **Operations Centre (OPSCEN)** jointly with Country Office and Regional Bureau Dakar

This dashboard is based on best available information at the time of production. Future updates may vary as new information becomes available.

- Country Office
- Warehouse
- UNHAS Connection
- National Capital
- International Boundary
- Sub Office
- Refugee Camp
- UNHAS Route
- Major Town
- Province boundary
- Field Office
- Road Supply Route
- Border Crossing Point
- Intermediate Town
- River
- Waterway Supply Route
- Small town
- Surface Waterbody

Sources: WFP, UNGIWG, GAUL, GLCSC, IPC, OCHA, UNHCR.
The designations employed and the presentation of material in the map(s) do not imply the expression of any opinion on the part of WFP concerning the legal or constitutional status of any country, territory, city or sea, or concerning the delimitation of its frontiers or boundaries.
© World Food Programme 2016

Source: WFP, 21 September 2016

Source: WFP, 16 September 2016

Source: OCHA FTS, 23 September 2016