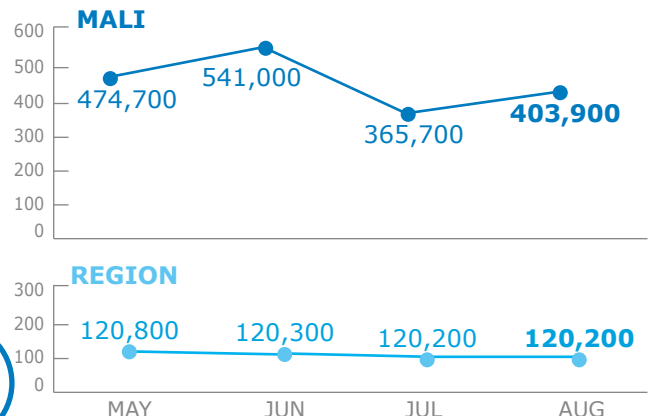


BENEFICIARIES

Mali PRRO + Regional PRROs

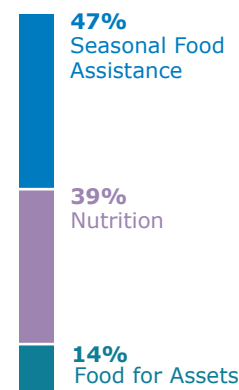
PEOPLE ASSISTED IN MALI & THE REGION



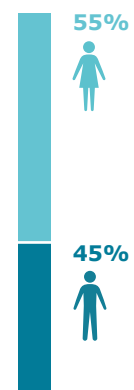
OPERATIONAL PROFILE

MALI PRRO 200719

BY ACTIVITY



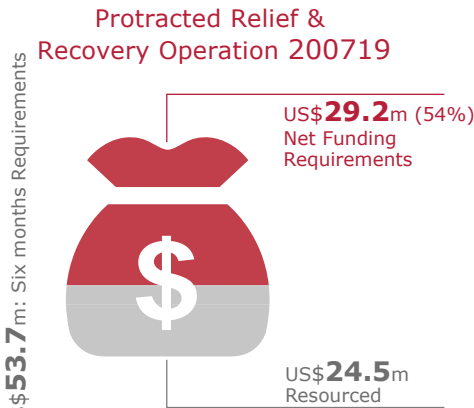
BY GENDER



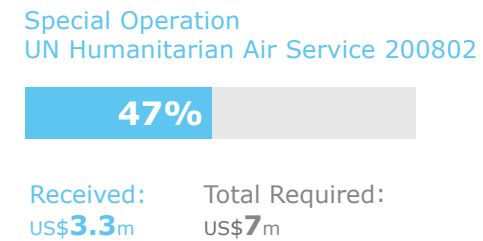
FUNDING

Sep. 2016 - Feb. 2017

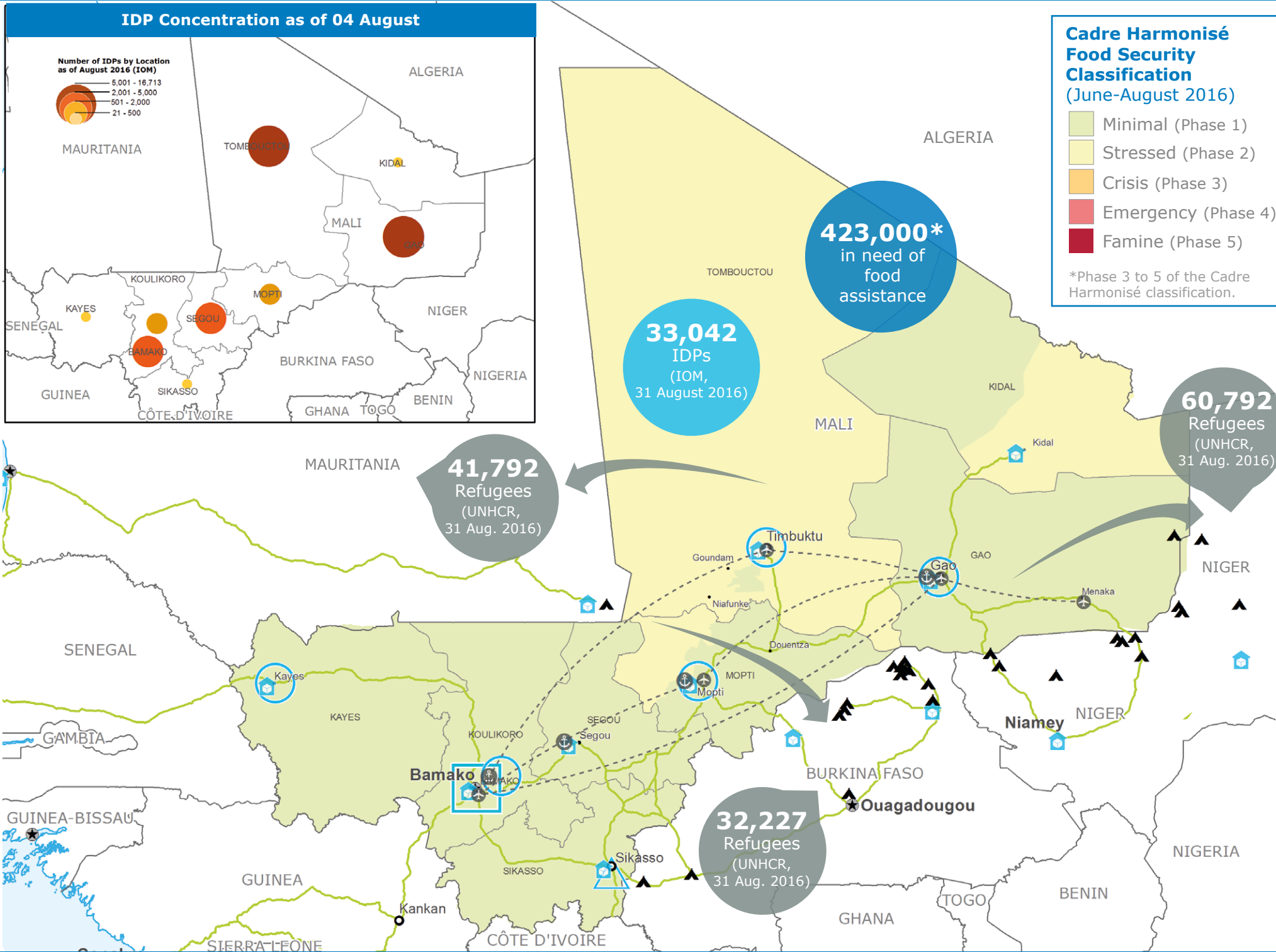
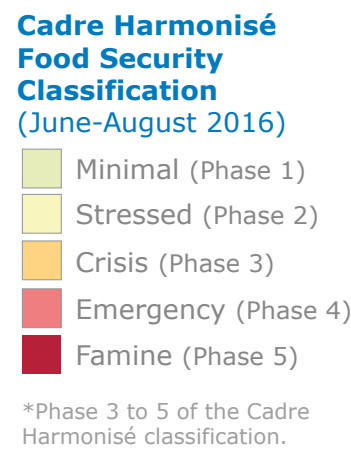
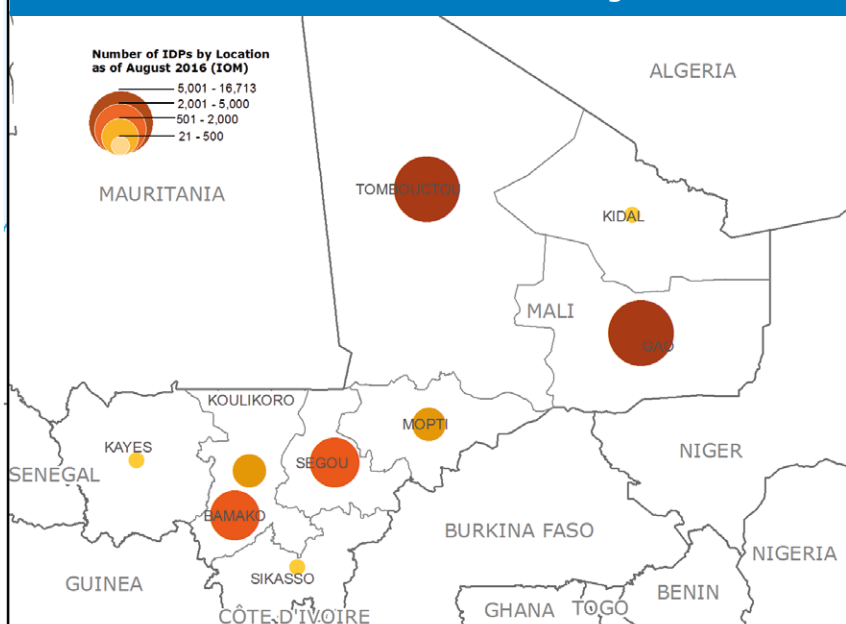
NET FUNDING REQUIREMENTS



2016 PROJECT RESOURCES



IDP Concentration as of 04 August



OPERATIONAL CHALLENGES

- Insecurity
- Humanitarian Access
- Resources

COMMON SERVICES

UN Humanitarian Air Service

Passengers Transported

JUN	686
JUL	610
AUG	706

Organizations Served

JUN	78
JUL	75
AUG	77

Source: WFP, 16 September 2016

2016 FUNDING of WFP-LED or CO-LED CLUSTERS

Food Security Cluster

10%

Received: US\$11m

Requirements: US\$116m

OCHA FTS, 26 September 2016

WFP LEVEL 2 EMERGENCY

SINCE 12 JANUARY 2012

For more information, see the **SITUATION REPORT** and **COUNTRY BRIEF** www.wfp.org/countries/mali

2A PRRO 200719

<http://documents.wfp.org/stellent/groups/public/documents/ep/WFP284303.pdf>

- Country Office
- Warehouse
- National Capital
- International boundary
- Sub Office
- UNHAS Connection
- Major Town
- Region boundary
- Field Office
- UNHAS Route
- Intermediate Town
- River
- Small Town
- Surface Waterbody
- Road Supply Route

Sources: WFP, UNGIWG, GAUL, GLCSC, OCHA, UNHCR, Cadre Harmonisé (March 2016). The designations employed and the presentation of material in the map(s) do not imply the expression of any opinion on the part of WFP concerning the legal or constitutional status of any country, territory, city or sea, or concerning the delimitation of its frontiers or boundaries.

© World Food Programme 2016

