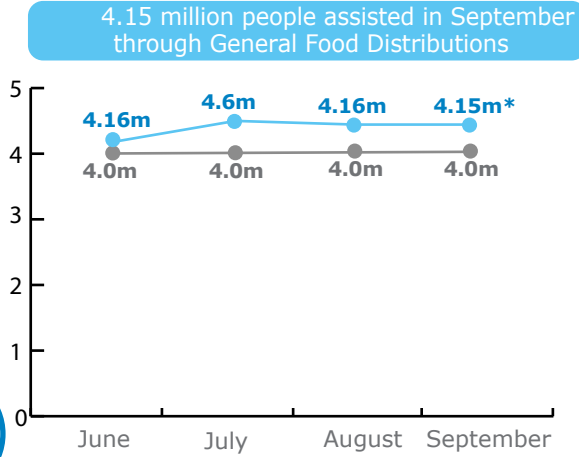


## BENEFICIARIES

Emergency Operation 200339

Operational Planned Assisted



\*Including 119,000 beneficiaries reached with wheat flour through inter-agency convoys

## OTHER PROGRAMMES

- 11,262** Pregnant and Nursing Women
- 84,694** Children-Nutrition
- 51,000** Students-Fortified School Snack

## NET FUNDING REQUIREMENTS

**EMOP 200339**

**\$173m** Total Requirements

**\$0m\*\* (0%)** Net Funding Requirements

**\$173m** Resourced

Three Month Outlook\*

\*\*Current project (EMOP) will end in December 2016, and a new project (PRRO) will start in January 2017.  
\*\*Including pledges and solid forecasts

**4.8** million refugees in the Region

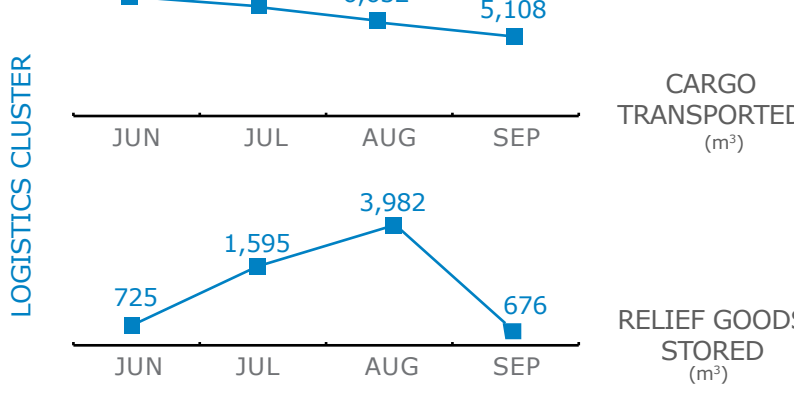
**9** million in need of Food & Livelihood Support

**6.1** million IDPs

### OPERATIONAL CHALLENGES

- Humanitarian Access
- Insecurity

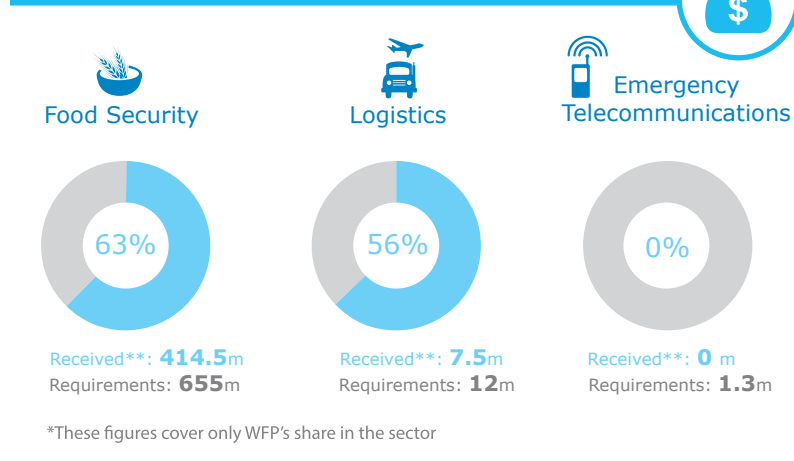
## COMMON SERVICES



**9** JOINT HUMANITARIAN CONVOYS SUPPORTED IN AUGUST 2016

**7** PARTNERS SERVED IN AUGUST 2016

## CLUSTERS & SECTORS FUNDING



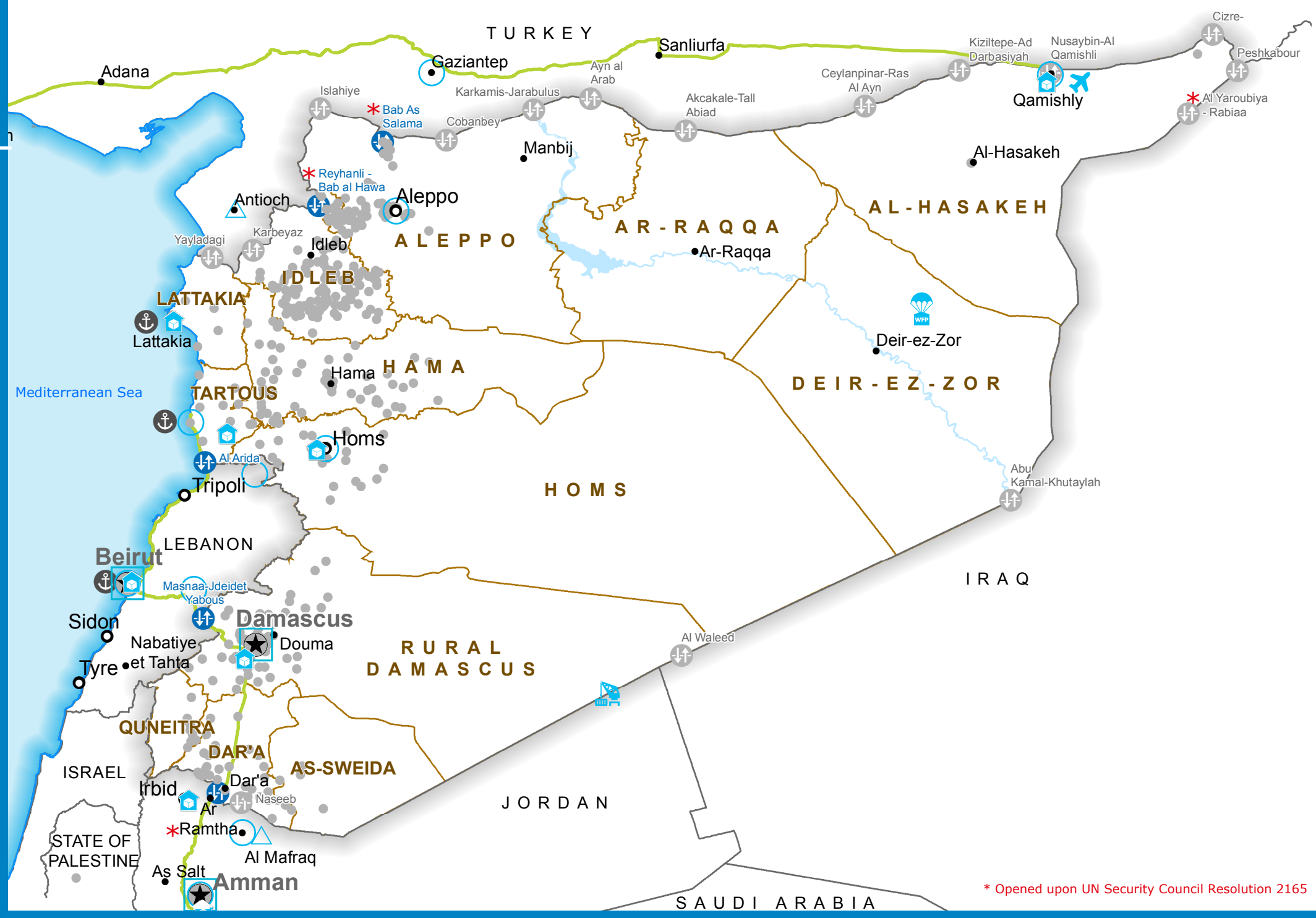
**WFP LEVEL 3 EMERGENCY**  
SINCE 14 DECEMBER 2012

**IASC LEVEL 3 EMERGENCY**  
SINCE 15 JANUARY 2013

Check the **SITUATION REPORT**  
<https://www.wfp.org/countries/syria>

Jointly produced by the WFP Operations Centre (OPSCEN) and the WFP Amman Sub Regional Office for the Syria Crisis

This dashboard is based on best available information at the time of production. Future updates may vary as new information becomes available.



**Legend:**

- Country Office
- Sub Office
- Field Office
- Road Supply Route
- Food Distribution Points (August 2016)
- Warehouse
- Open Border Crossing Point
- Closed Border Crossing Point
- Airlifts
- Crane operation
- Airdrops
- National Capital
- Major Town
- Intermediate Town
- International boundary line
- Governorate Boundary
- Port

Sources: OCHA, WFP, GLCSC, UNGIWG, UNHCR, Geonames

The designations employed and the presentation of material in the map(s) do not imply the expression of any opinion on the part of WFP concerning the legal or constitutional status of any country, territory, city or sea, or concerning the delimitation of its frontiers or boundaries. ©World Food Programme 2016



As of 01 September 2016