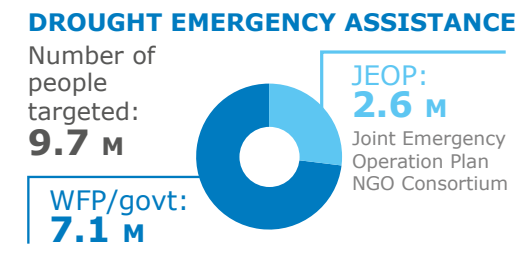
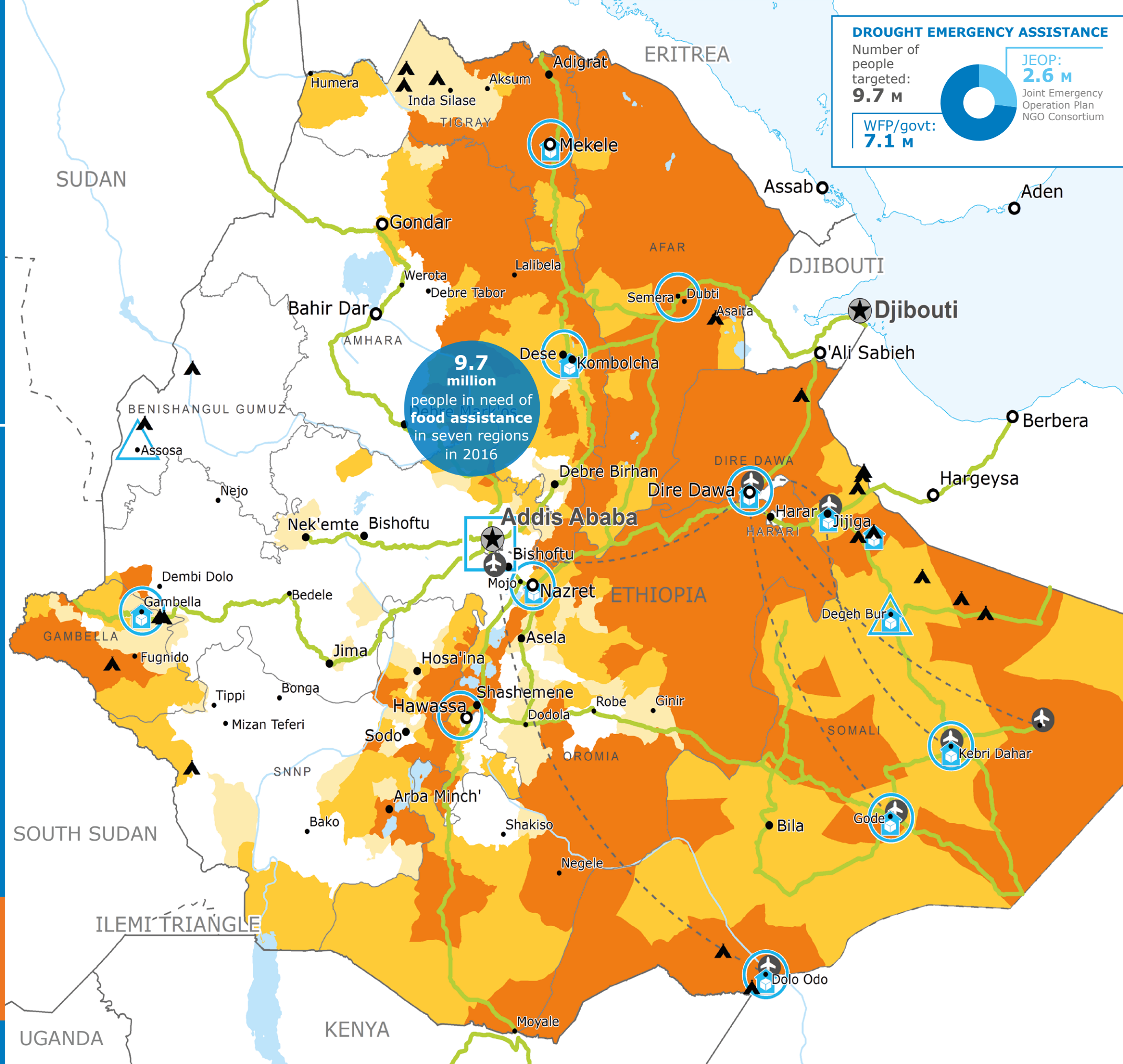
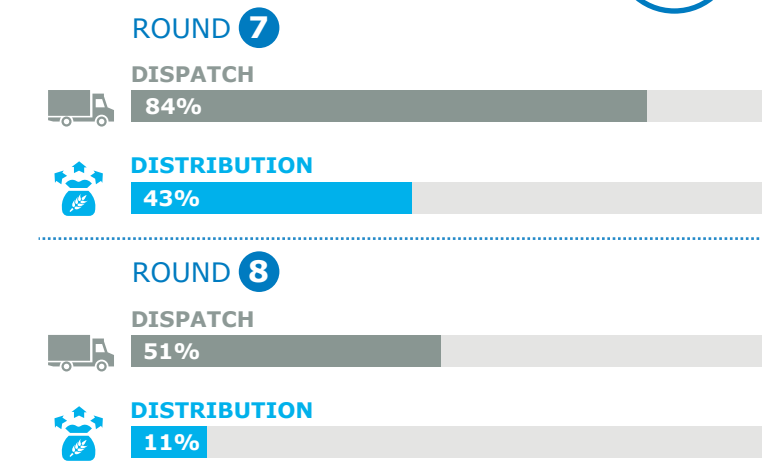


WFP  
SAYS  
NO to  
GENDER  
BASED  
VIOLENCE

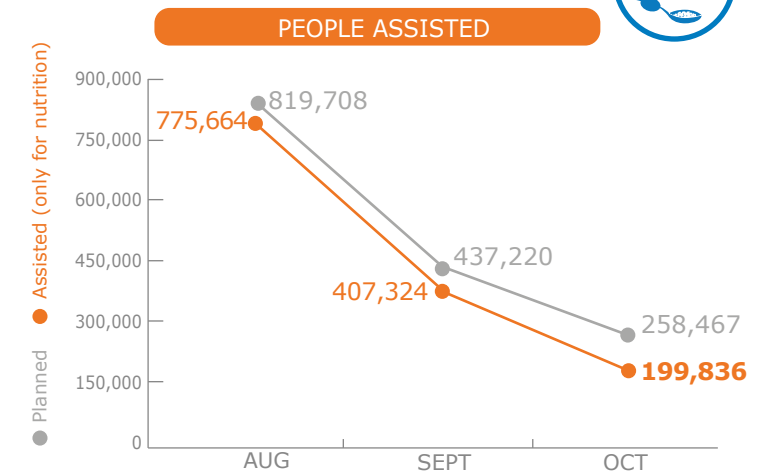


## EMERGENCY RELIEF

People targeted: **9.7 million**, as of 02 November 2016



## EMERGENCY NUTRITION



## FUNDING

Nov 2016 - Apr 2017

Protracted Relief and Recovery Operation (PRRO) 200712



## OPERATIONAL CHALLENGES

**Resources**

**Humanitarian Access**

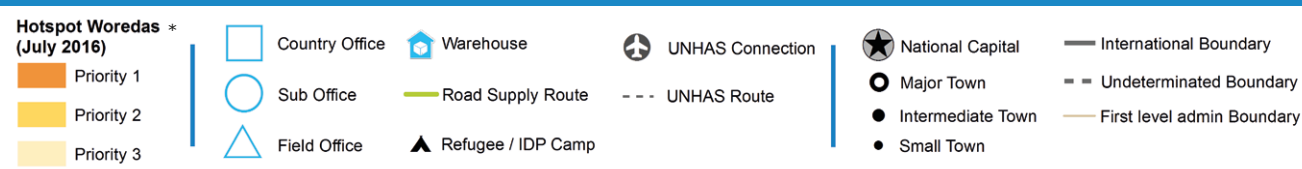
For more information, see the **SITUATION REPORT** and **COUNTRY BRIEF** [www.wfp.org/countries/ethiopia](http://www.wfp.org/countries/ethiopia)

**2A PRRO 200712**

<http://documents.wfp.org/stellent/groups/public/documents/ep/WFP284303.pdf>

Produced by the WFP **Operations Centre (OPSCEN)** jointly with Country Office and Regional Bureau Nairobi

This dashboard is based on best available information at the time of production. Future updates may vary as new information becomes available.



\*The Hotspot Woreda classification triggers prioritized humanitarian response.

Sources: WFP, UNGIWG, GAUL, GLCSC, UNHCR

The designations employed and the presentation of material in the map(s) do not imply the expression of any opinion on the part of WFP concerning the legal or constitutional status of any country, territory, city or sea, or concerning the delimitation of its frontiers or boundaries.

© World Food Programme 2016