

# WFP Ethiopia, Amhara Region

## Drought Emergency Targeted Supplementary Feeding Programme



November 2016

**NOVEMBER**  
OVERALL STATUS  
AS OF 30 NOV 2016

### DISPATCHES AND DELIVERIES



### KEY FIGURES



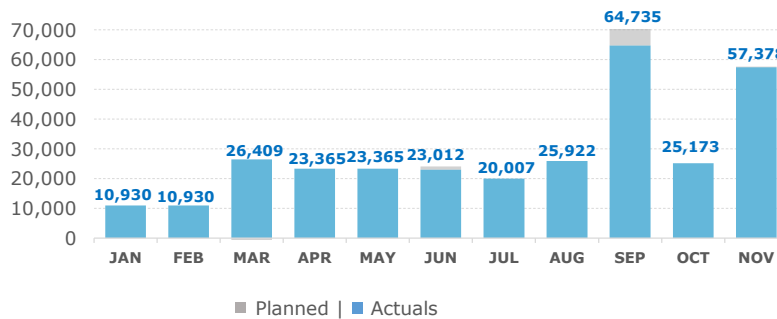
### TSFP HIGHLIGHTS

- Treatment of moderately acute malnourished cases continued in November, with new screening figures resulting in increased admission rate.
- In November, the performance indicators reported 94% cure rate, 3% default and non-cure rates for children under five. For pregnant and lactating women, it was reported 99% cure rate and 1% default rate.



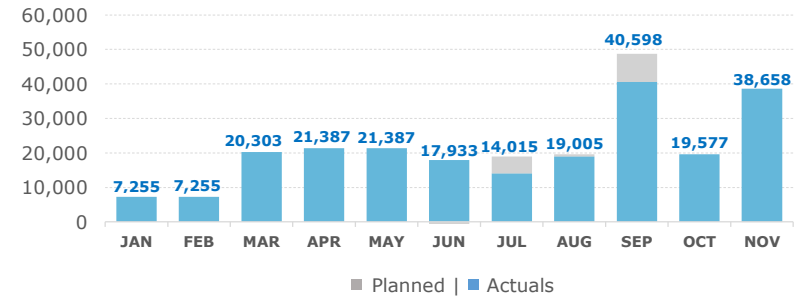
### TSFP – MAM CHILDREN, BY MONTH

Planned vs. Actual



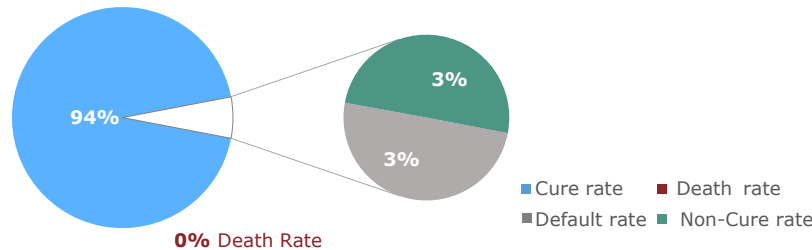
### TSFP PREGNANT AND LACTATING WOMEN, BY MONTH

Planned vs. Actual



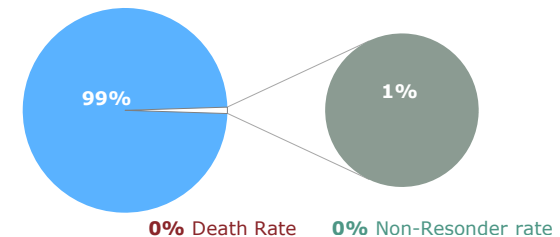
### TSFP – MAM CHILDREN 6–59 MONTHS

November TSFP performance indicators<sup>1</sup>



### TSFP - PREGNANT AND LACTATING WOMEN

November TSFP performance indicators<sup>1,2</sup>



Sphere standards: Cured >75% | Death <3% | Default <15%

<sup>1</sup> TSFP performance indicators reflect IMAM model of implementation <sup>2</sup> PLW cure rate reflects combined admission and discharge criteria per 2012 CMAM Guidelines