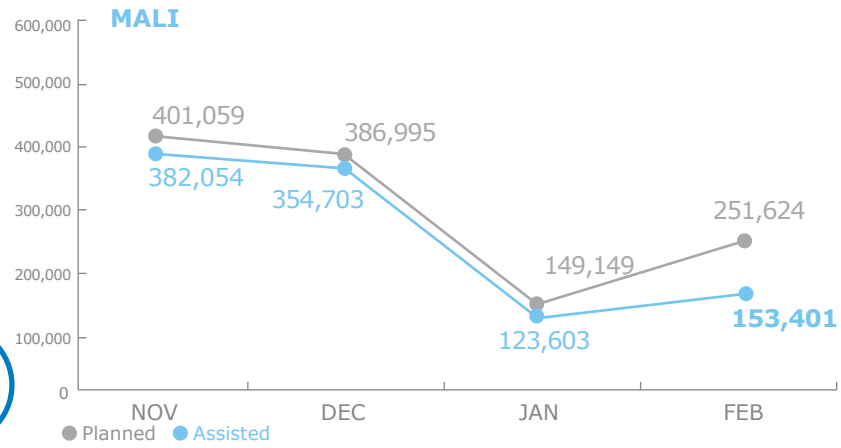
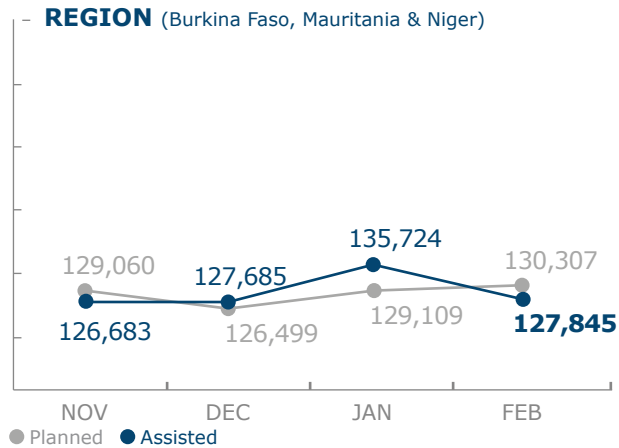


### PEOPLE ASSISTED



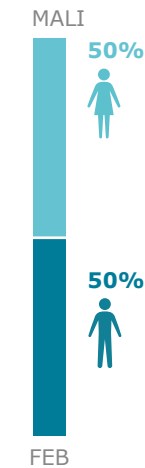
### RELIEF OPERATIONS IN MALI AND THE REGION



### OPERATIONAL PROFILE



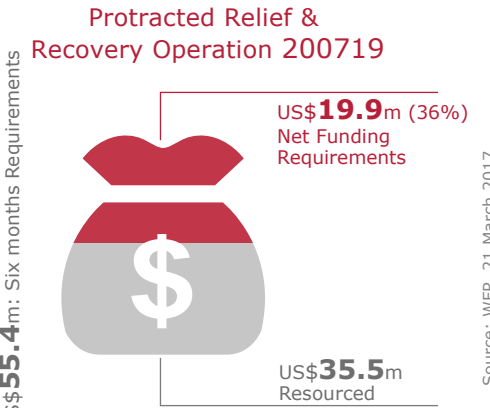
MALI RELIEF OPERATION 200719



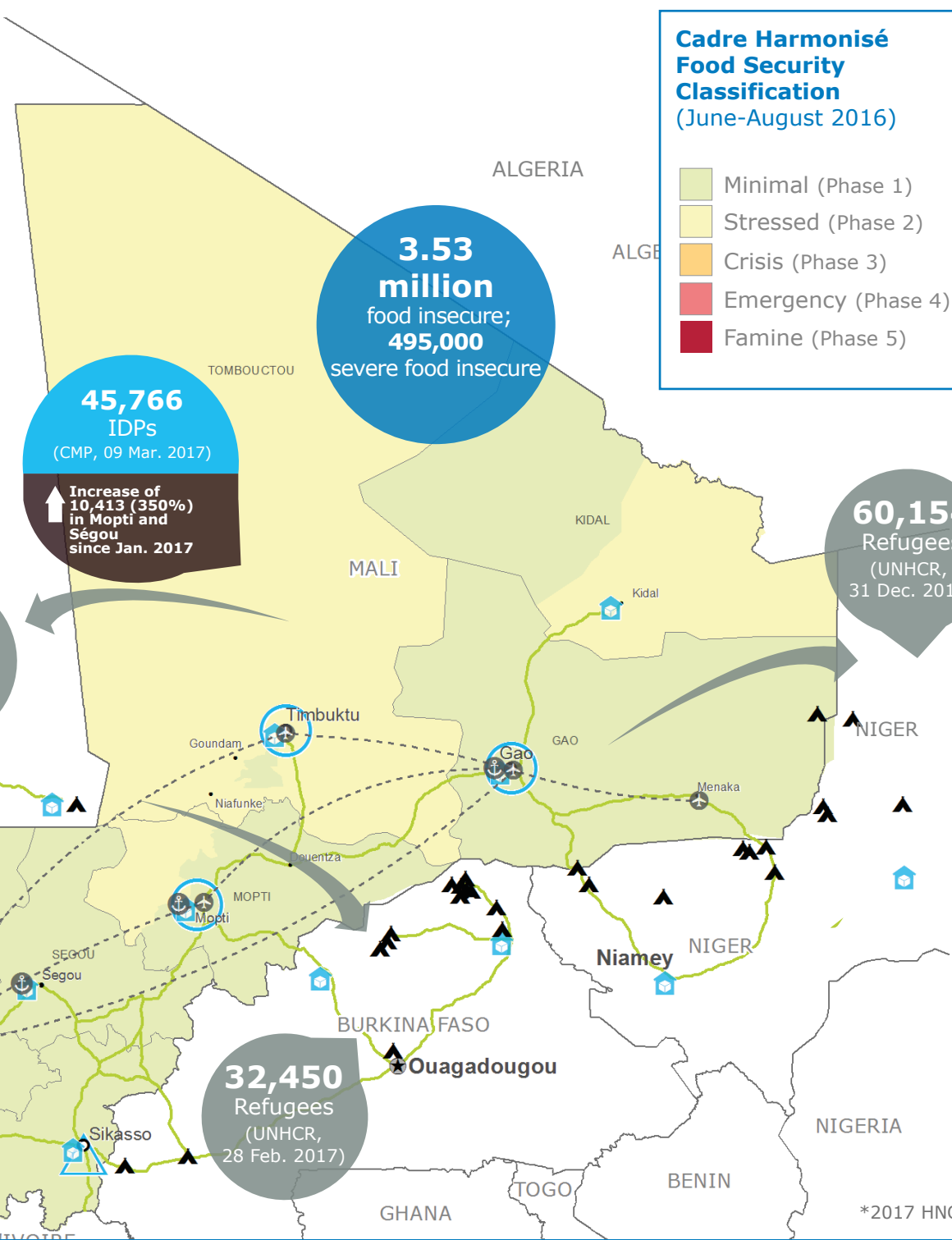
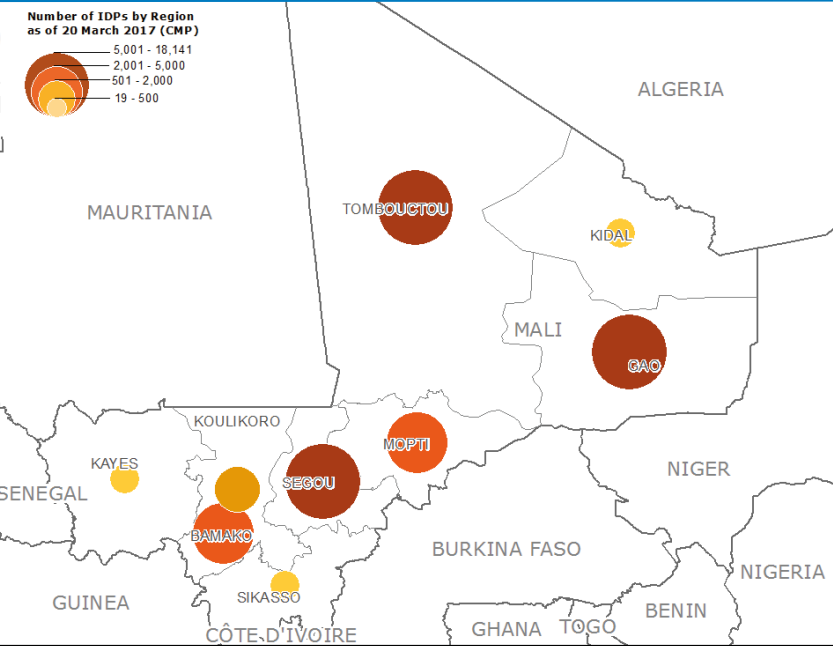
### FUNDING

Mar - Aug 2017

### NET FUNDING REQUIREMENTS



### IDP Concentration as of 20 March



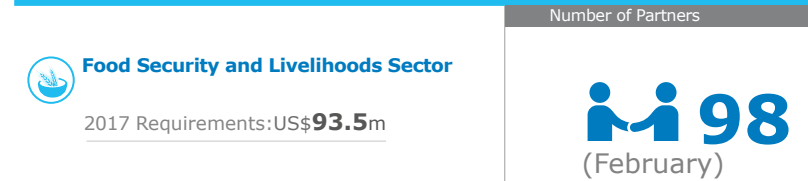
### 2017 PROJECT RESOURCES

Special Operation UN Humanitarian Air Service (UNHAS) 201047

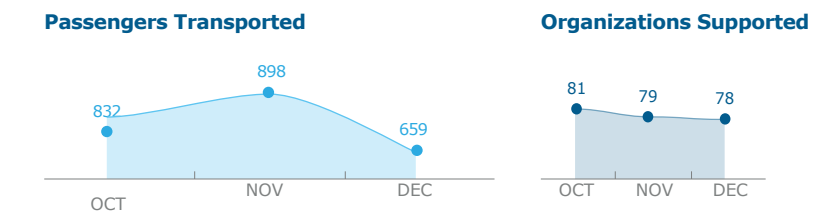


Source: WFP, 22 March 2017

### WFP LED & CO-LED SECTORS



### UN Humanitarian Air Service (UNHAS)



Source: Sectors, 14 March 2017

### WFP LEVEL 2 EMERGENCY SINCE 12 JANUARY 2012

For more information, see the **SITUATION REPORT** and **COUNTRY BRIEF** [www.wfp.org/countries/mali](http://www.wfp.org/countries/mali)

**2A** RELIEF OPERATION 200719  
<http://documents.wfp.org/stellent/groups/public/documents/ep/WFP284303.pdf>

Produced by the WFP **Operations Centre (OPSCEN)** jointly with Country Office and Regional Bureau Dakar

This dashboard is based on best available information at the time of production. Future updates may vary as new information becomes available.

- Country Office
- Warehouse
- National Capital
- International boundary
- Sub Office
- UNHAS Connection
- Major Town
- Region boundary
- Field Office
- UNHAS Route
- Intermediate Town
- River
- Small Town
- Surface Waterbody
- Road Supply Route

Sources: WFP, UNGIWG, GAUL, GLCSC, OCHA, UNHCR, Cadre Harmonisé (March 2016). The designations employed and the presentation of material in the map(s) do not imply the expression of any opinion on the part of WFP concerning the legal or constitutional status of any country, territory, city or sea, or concerning the delimitation of its frontiers or boundaries. © World Food Programme 2017