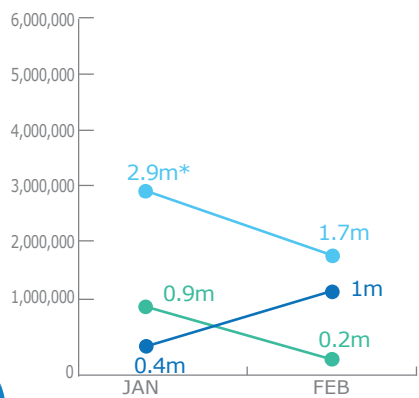
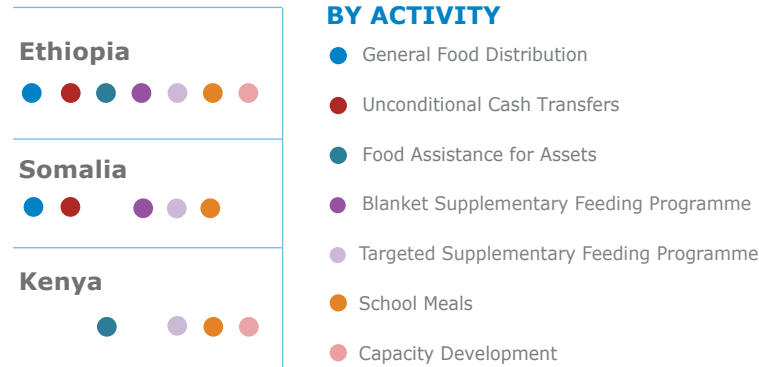


PEOPLE ASSISTED



*Ethiopia distributes assistance by rounds, not months; January covers the bridging round from December to January.

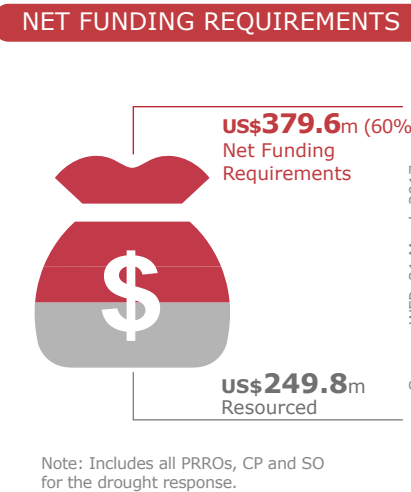
OPERATIONAL PROFILE



OVERALL FUNDING

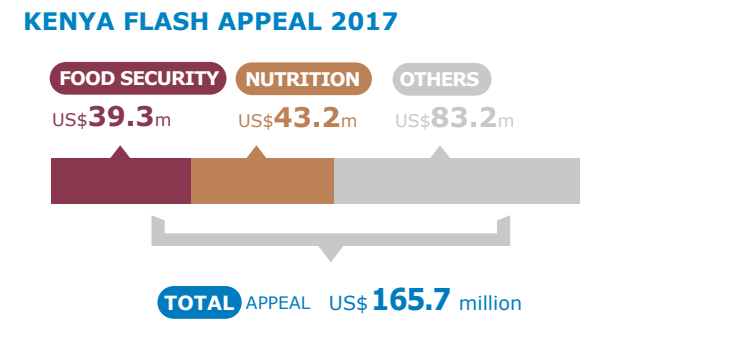
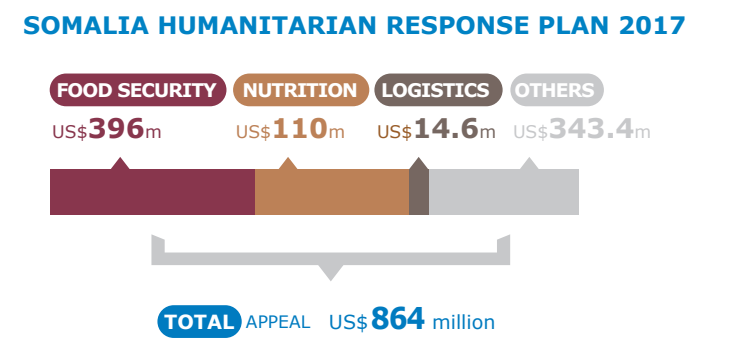
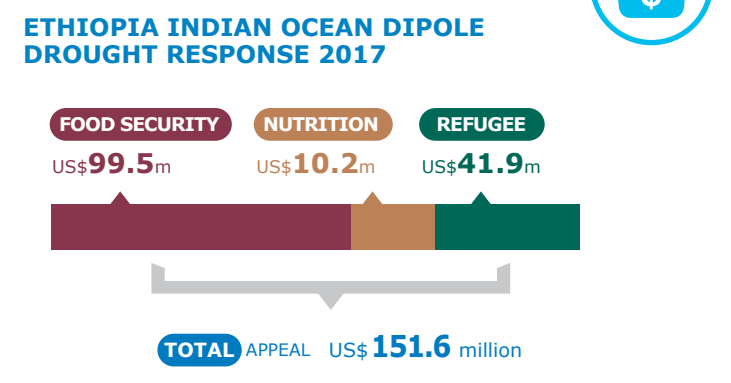
Mar - Aug 2017

us\$629.4m: Six months Requirements

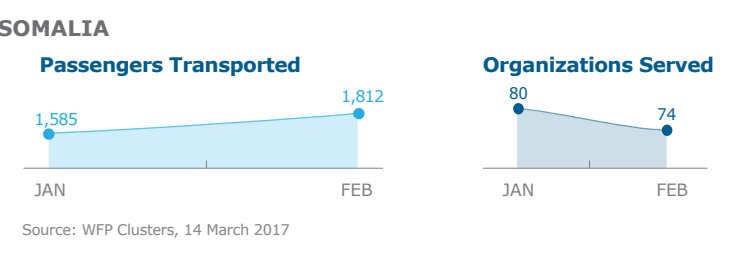
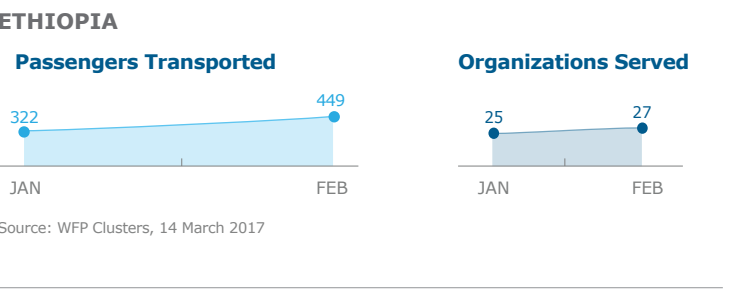


Source: WFP, 21 March 2017

2017 HUMANITARIAN RESPONSE PLANS & CLUSTER REQUIREMENTS



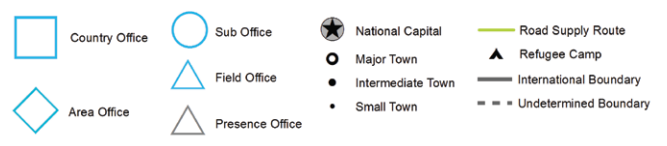
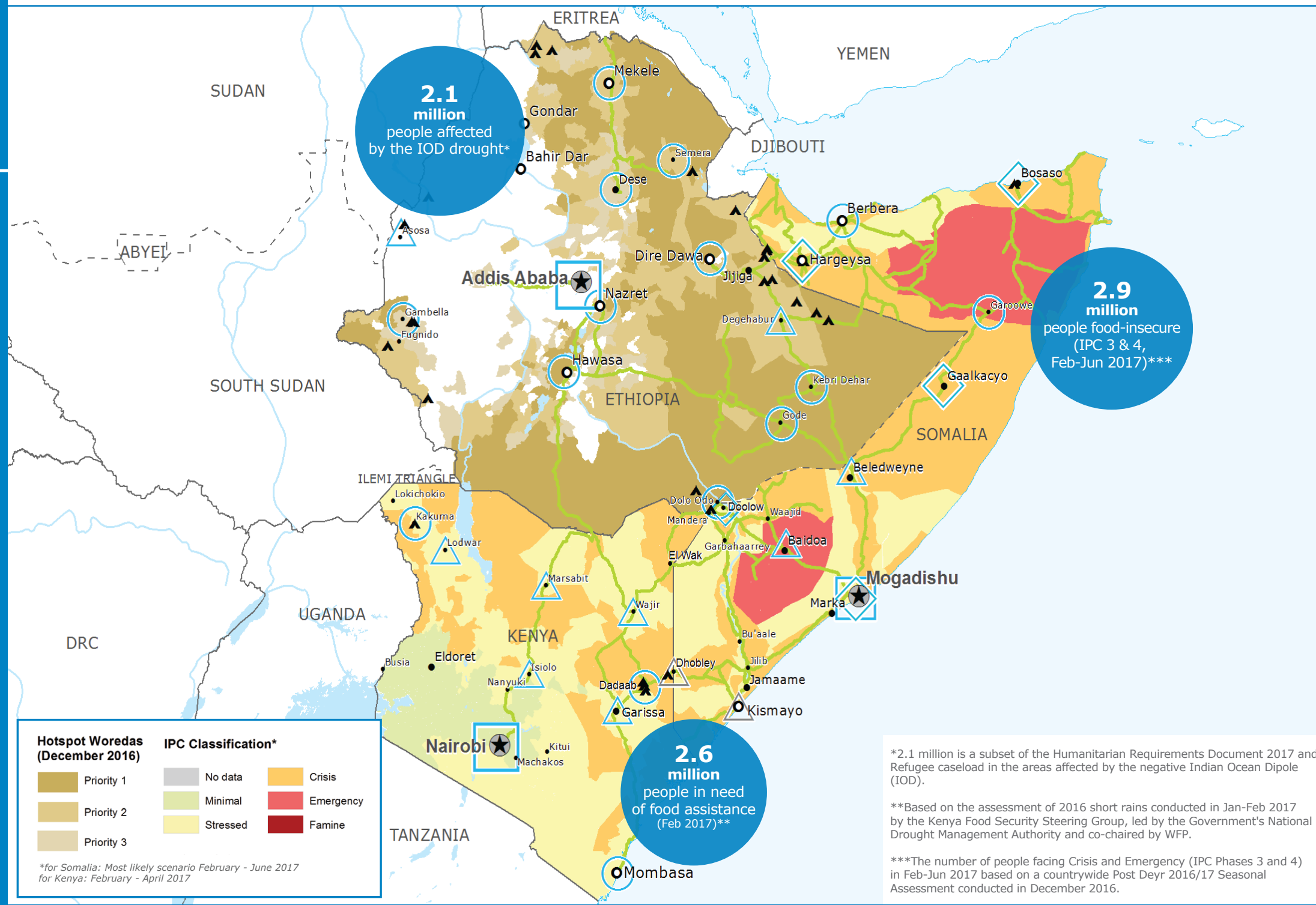
UN Humanitarian Air Service (UNHAS)



WFP LEVEL 2 EMERGENCY SINCE 06 FEBRUARY 2017

For more information, see the **SITUATION REPORT** and **COUNTRY BRIEF** www.wfp.org

Produced by the WFP **Operations Centre (OPSCEN)** jointly with Country Offices and Regional Bureau Nairobi



Sources: WFP, UNGIWG, GAUL, GLCSC, UNHCR
The designations employed and the presentation of material in the map(s) do not imply the expression of any opinion on the part of WFP concerning the legal or constitutional status of any country, territory, city or sea, or concerning the delimitation of its frontiers or boundaries. © World Food Programme 2017

This dashboard is based on best available information at the time of production. Future updates may vary as new information becomes available.