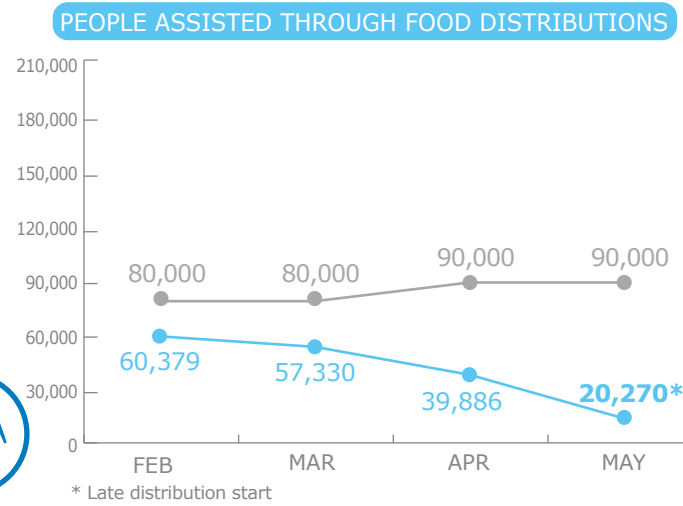
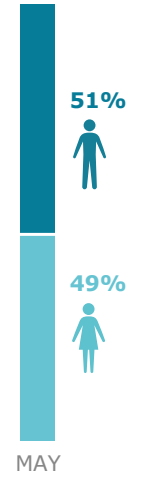


PEOPLE ASSISTED

Emergency Operation 200925



OPERATIONAL PROFILE



COOPERATING PARTNERS

- 4 Partners**
- Tahir Azzawi Charity Organization (STACO)
 - LibAID
 - Ayady Al Khair Society (AKS)
 - Kafaa Development Fundation

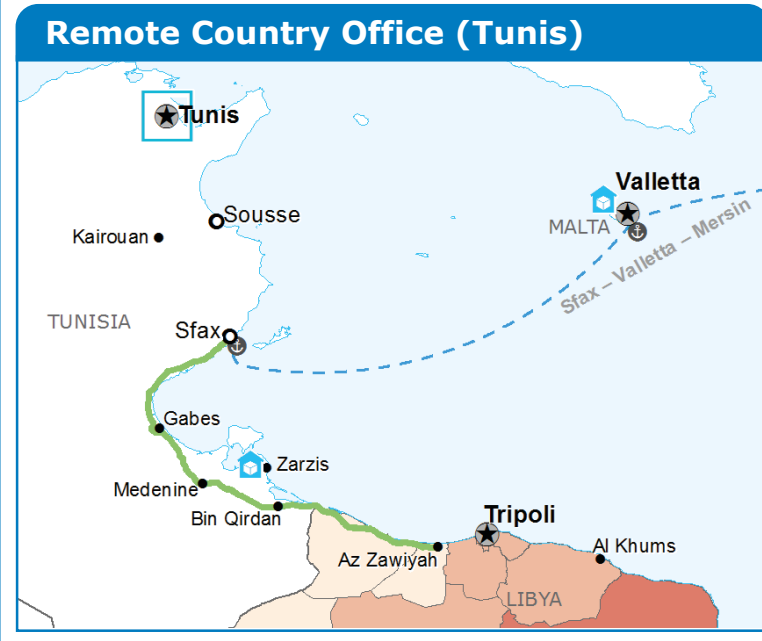
FUNDING

EMOP 200925

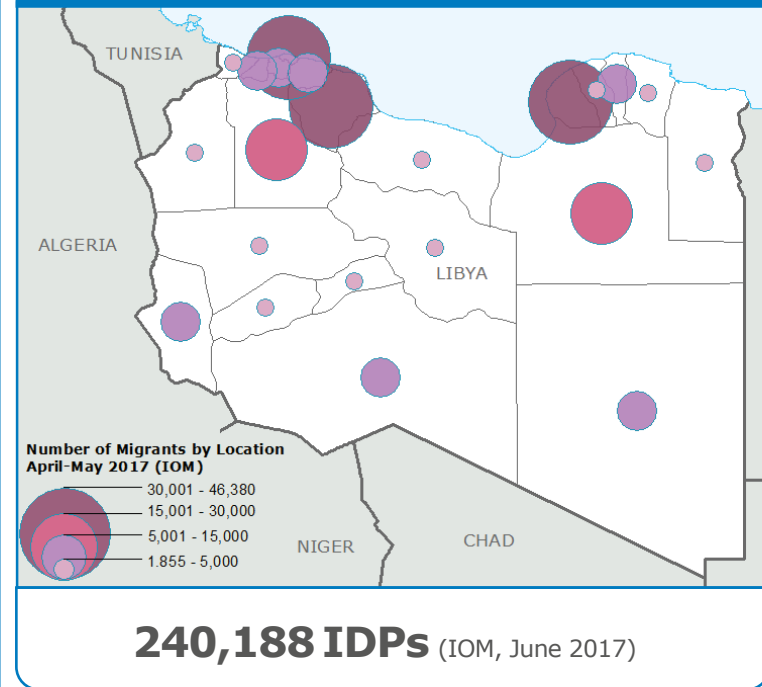
June - November 2017

US\$9.7m
Net Funding Requirements

Source: WFP, 09 June 2017



IDP CONCENTRATION



WFP-LED & CO-LED SECTORS

Food Security Sector

Requirements: US\$24.8m
Received: US\$7.3m

29%

Number of Partners

4
(2017)

Source: FTS, Clusters 08 June 2017

WFP LEVEL 2 EMERGENCY

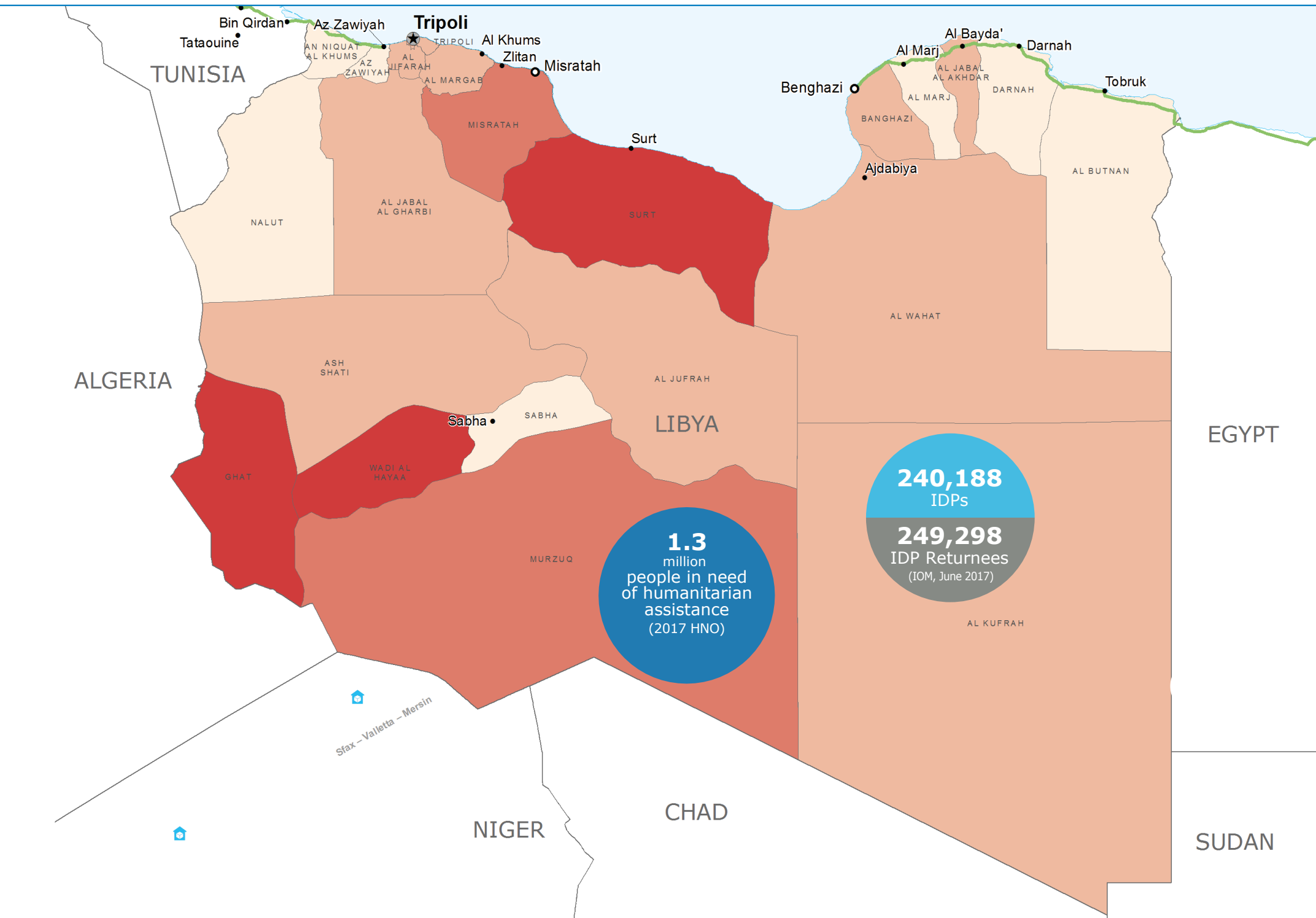
SINCE 26 NOVEMBER 2014

For more information, see the **SITUATION REPORT** and **COUNTRY BRIEF** www.wfp.org/countries/libya

1 Emergency Operation 200925

<http://documents.wfp.org/stellent/groups/public/documents/ep/WFP284303.pdf>

Produced by the WFP **Operations Centre (OPSCEN)** jointly with Country Office and Regional Bureau Cairo. This dashboard is based on best available information at the time of production. Future updates may vary as new information becomes available.



Food Security Severity of Needs (2017 HNO)

Number of IDPs by Location September 2016 (IOM)

- 25,001 - 51,730
- 12,001 - 25,000
- 3,001 - 12,000
- 10 - 3,001

IDPs Concentration Trend June - September 2016

- Decrease
- Constant
- Increase

Legend:

- Country Office
- Staging Area
- Port
- Road Supply Route
- Sea Supply Route
- National Capital
- Major Town
- Intermediate Town
- Small Town
- International boundary
- Province Boundary

Sources: WFP, UNGIWG, GAUL, GLCSC, OCHA, MSNA/HNO, IOM. The designations employed and the presentation of material in the map(s) do not imply the expression of any opinion on the part of WFP concerning the legal or constitutional status of any country, territory, city or sea, or concerning the delimitation of its frontiers or boundaries. © World Food Programme 2017

