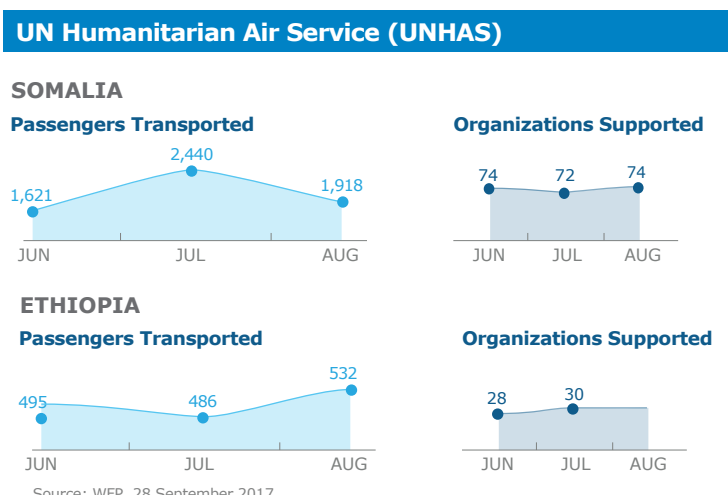
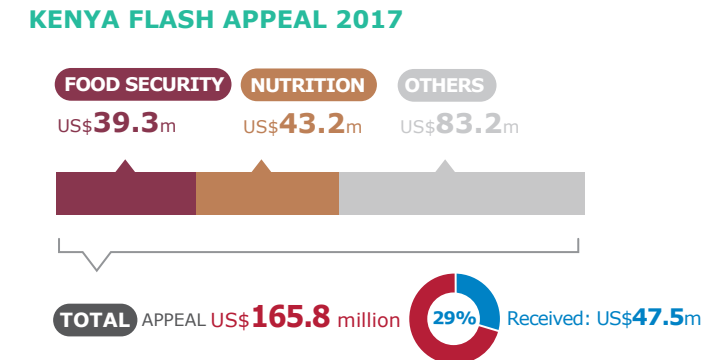
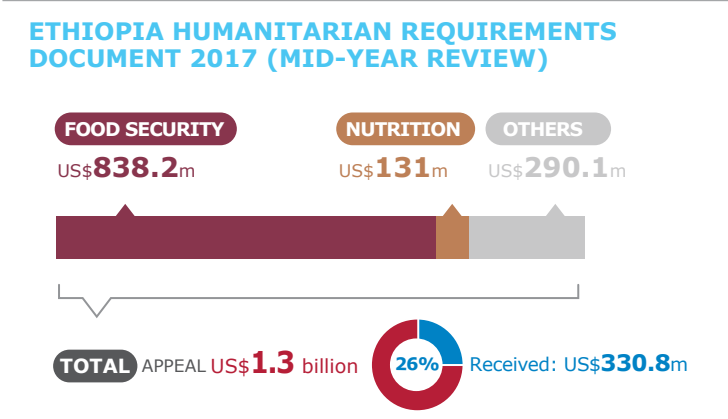
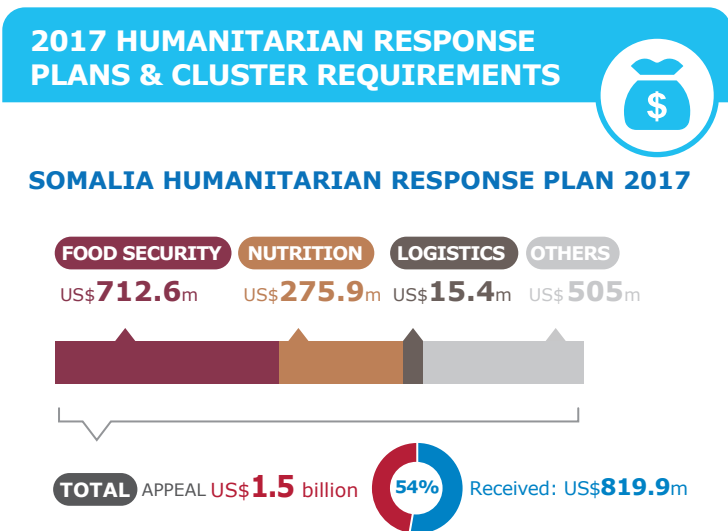
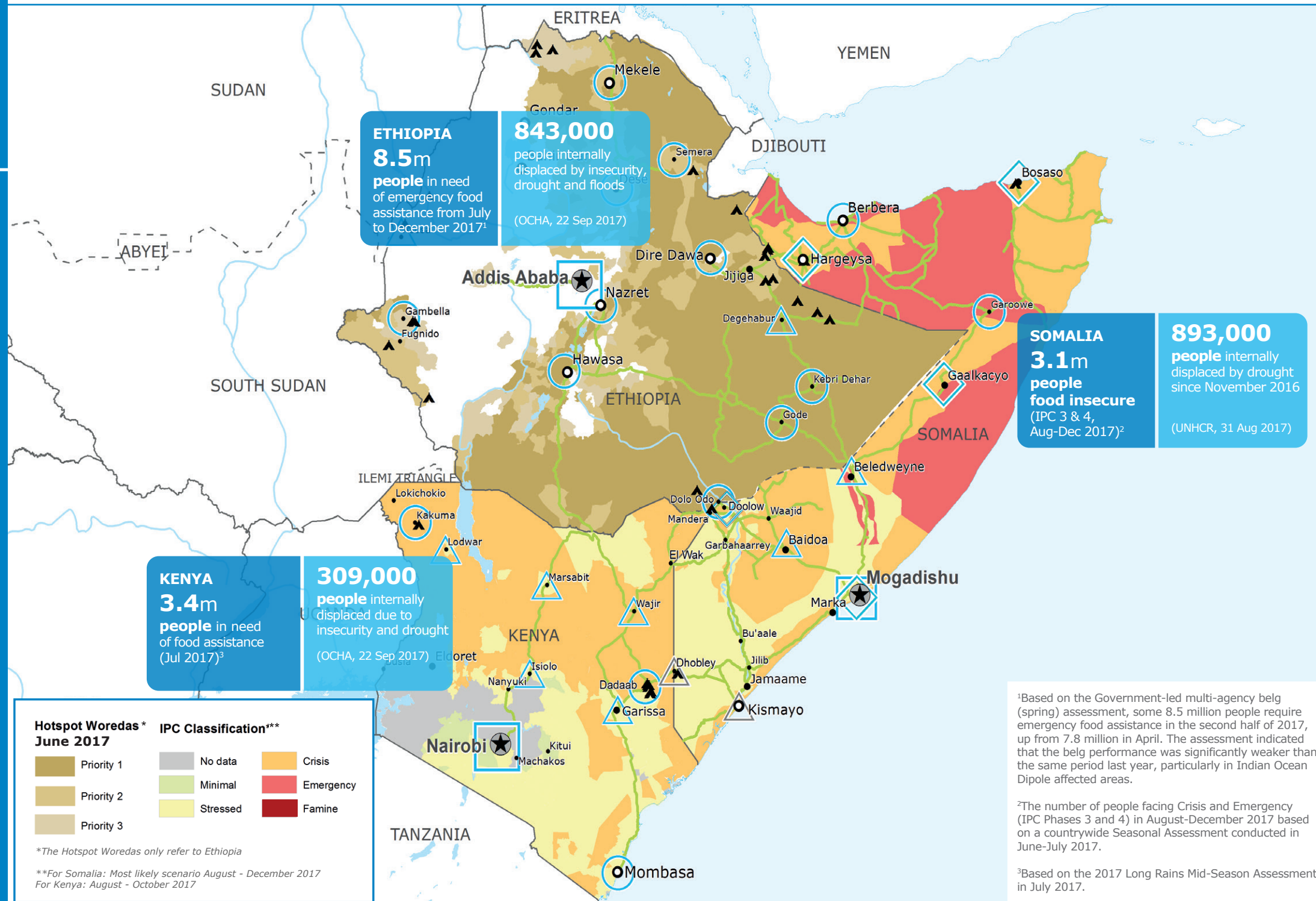


Source: WFP, 28 September 2017



**WFP LEVEL 2 EMERGENCY**  
SINCE 06 FEBRUARY 2017

For more information, see the **SITUATION REPORT** and **COUNTRY BRIEF** [www.wfp.org](http://www.wfp.org)

Produced by the WFP **Operations Centre (OPSCEN)** jointly with Country Offices and Regional Bureau Nairobi