

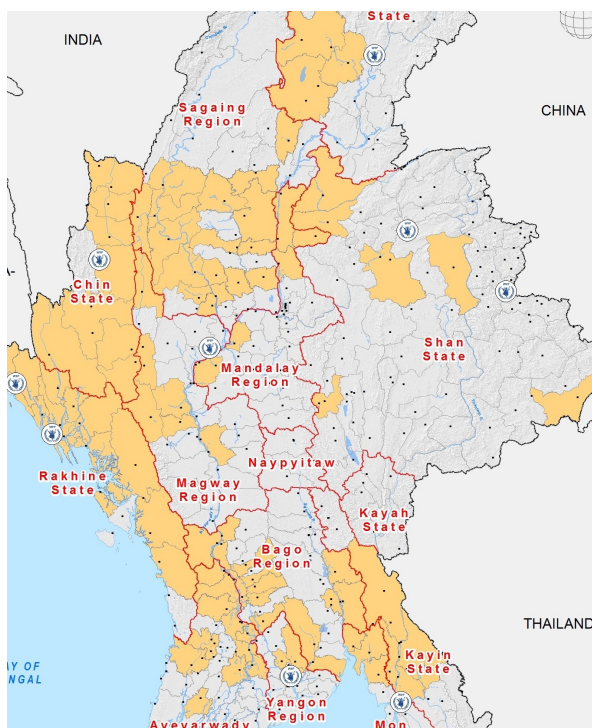


World Food Programme

wfp.org

## Myanmar

# Emergency Response to Floods



Flood affected areas of Myanmar

## Situation Update

- According to the Government as well as inter-agency and WFP individual needs assessments, more than 322,000 people have been affected by severe floods and landslides in 12 states/regions of Myanmar: Ayeerwady, Bago, Chin, Kachin, Kayin, Mandalay, Magway, Mon, Rakhine, Sagaing, Shan and Yangon.
- The declaration by the President of the worst affected states/regions of Chin, Magway, Rakhine and Sagaing as natural disaster zones has remained in place since 31 July.
- The Government, supported by the U.N., civil society organizations, NGOs and private sector, has led the response, which includes provision of food and other non-food relief assistance.
- On 4 August, the Government formally welcomed international humanitarian assistance. Priority needs include food, water and sanitation, access to health care, and provision/repair of shelter.
- Floods have inundated more than one million acres of farmland. Damage to crops and arable land will further exacerbate the food security situation in the country, which already has one of the highest undernutrition rates in the region.
- There are reports of increased rice prices in Chin due to the flooded paddy fields, damaged food stocks and obstructed transportation routes. Rice export has been halted until mid-September.
- It is expected that the delta region in the lower Myanmar will experience flooding in some three-five days due to the overflow water released from dams upriver in Sagaing Region.

## In numbers



**322,000** people affected

**12** states and regions affected

**281,000** people in need of immediate food assistance

**4,400 mt** of food needed

**US\$ 3** million per month additionally needed

**103,000** people with **387** mt of food already assisted

## Funding partners in Myanmar



Australia, Canada, Czech Republic, European Union, Italy, Japan, Japan Association for WFP, Luxembourg, Switzerland, Unilever, United States, United Kingdom & UNCF.

## WFP Response

- WFP has continued needs assessments across the country in order to provide an appropriate and effective response to floods.
- Following the official request for assistance from the Government and based on the assessments, WFP, just 48 hours after the declaration of the State of Emergency by the Government, has initiated a floods emergency response, currently targeting 281,000 flood affected people in Bago, Chin, Kachin, Magway, Mon, Rakhine and Sagaing.



## Food Assistance



- WFP floods response consists of food assistance with a one-month food basket (13.5 kg of rice, 1.8 kg of pulses, 0.9 lit of cooking oil and 150 gm of salt) and/or a one-week ration of High Energy Biscuits (three packs per day per person) for 281,000 flood affected people.
- Since the onset of the emergency response on 2 August, WFP has already distributed 387 mt of food to 103,000 people in Chin, Bago, Kachin, Mon, Magway, Rakhine and Sagaing.



## Logistics

- Access to several areas in Chin, Rakhine and Sagaing remains hindered by blocked transportation links and damaged infrastructure, delaying delivery of food currently in transit.
- The Government has provided free transportation of WFP's food by military planes and helicopters. The involvement of military was limited to provision of air freight service only.
- Four commercial air companies, Air Bagan, Air KBZ, Golden Myanmar Airlines and Myanmar National Airlines, have also helped transport food and non-food items at no cost to WFP.
- WFP is establishing a platform for provision of common humanitarian logistics services to other U.N. agencies and NGOs.



## Food Security Sector

- On 7 August, the Food Security Sector meeting on the floods emergency response took place. While OCHA is coordinating a Multi-Sectoral Initial Rapid Assessment (MIRA) centrally, varying U.N. agencies and NGOs are primaries at the state/regional level.
- FAO and WFP are also discussing with the Government the feasibility of urgently fielding a Crop and Food Security Assessment Mission (CFSAM) to assess both immediate and longer term food security and agriculture rehabilitation needs.
- FAO received an official request from the Government to assess the impact of floods on livestock and agriculture. An assessment mission will arrive in Myanmar on 10 August.

## Partnerships



- WFP is working with ACF, Danish Church Aid, Karuna Myanmar Social Services, Malteser, Save the Children, PACT, Terre des Hommes - Italy, World Vision and other NGOs to conduct further needs assessments in the affected areas. Due to scope and scale of the emergency response, WFP is coordinating with local NGOs to carry out food distributions in numerous location.
- The Government has activated the Emergency Operation Centre (EOC) to facilitate emergency response coordination between the humanitarian community and various governmental bodies.

## Resourcing Update



- WFP requires US\$19 million to meet all food assistance needs under the current project until the end of the year, excluding the supplementary needs deriving from the emergency response to the floods.
- The Czech Republic has been the first donor to support WFP's emergency response with a timely contribution of CZK2.5 million (US\$101,000).
- The Government of Italy made a generous contribution of €700,000 (US\$774,000) in support of WFP's relief operations.
- WFP appeals to funding partners for additional resources to respond to the floods emergency. Some US\$3 million per month is required to meet food needs of the flood affected people. Therefore, the response lasting six months would denote an extra US\$18 million, resulting in an overall project funding shortfall of US\$37 million.
- Emergency funding was requested from the United Nations Central Emergency Fund (CERF).

## Contacts



- Arsen Sahakyan  
Partnerships Officer  
arsen.sahakyan@wfp.org
- Masae Shimomura  
Emergency Preparedness & Response Office  
masae.shimomura@wfp.org



Distributions of UK funded biscuits and EU funded rice in Sagaing ©WFP Myanmar Emergency Response Team