

OPERATION EVALUATION

Haiti, Protracted Relief and Recovery Operation 200618, Strengthening Emergency Preparedness and Resilience: A mid-term evaluation of WFP's Operation (2014- 2017) **Evaluation Report Supplemental Annexes**

Evaluation team: Mirella Mokbel Genequand, Team Leader; Blanche Renaudin; Robert Philippe
Evaluation Manager: Monica Mueller

Commissioned by the
WFP Office of Evaluation

Report number: OEV/2016/001



World Food Programme



Supplemental Annexes Table of Contents

Annex 6: Interview Guides	2
Annex 7: Fieldwork Schedule	22
Annex 8: Overview of Kore Lavi Project	26
Annex 9: Additional Information on Context and Results.....	28
• Context	
• Results: Recovery and Resilience	
• Results: Nutrition	
• Results: EPR	
• Results: Targeting System for a National Social Safety Net	

Annex 6: Interview Guides

Questions for WFP Country Office

Relevance

1. **Choice of objectives, activities, targeting & transfer modalities.** Going back to 2013, can you reflect on how the operation was designed? What analytical work was done to feed into decision-making and how relevant was this work? To what extent were (the right) counterparts involved in the various phases of the operation design process? What factors in your view affected/contributed to the quality of the design? Were lessons learned from the PRRO 108440 (which was on-going at the time of designing this one) taken into account? If so, how?
2. To what extent and how did the CO receive the necessary support for the design and implementation of the operation from within WFP (RB and/or HQ)?
3. Did the choice of objectives, activities, targeting & transfer modalities correspond to the needs of the target groups (food insecure, malnourished & vulnerable to disasters & economic shocks population)? Which assessments were conducted / analysed to ensure responding to the needs of the people most in need? Extent of consultation / participation processes.
4. In your opinion, today, do they continue to correspond to the context, the priorities of the government, the food security needs, and the needs of beneficiaries, including to specific gender issues and concerns? Are mechanisms for monitoring changes set up and has the programme adjusted according to changing needs?
5. What specific issues were identified as needing WFP's technical assistance (financial needs, capacity gaps, institutional weaknesses, logistical capacity, partnerships, etc.)? What activities were designed to address these? With the benefit of hindsight, are there other actions that should have been taken?
6. How innovative are activities designed?
7. **Coherence with WFP policies, strategies & normative guidance.** Which of the existing WFP policies and normative guidance material were used/helpful – including gender? Any gaps in WFP guidance?
8. **Synergy with the on-going school feeding development project.** Any specific action taken to enhance synergy between the two operations?
9. **Coherence with national policies, strategies & programmes.** To what extent was an enabling framework in place (relevant national policies, strategies, normative guidance in place – including gender? and national priorities well-defined)? To what extent is WFP's Operation design in line with those? In your opinion, are there divergences between WFP's choices and relevant ministries' priorities and normative guidance? If so, how might this be addressed?
10. **Complementarity with the UN / humanitarian & development actors.** What is the degree of complementarity (alignment with sector policies and guidance, gap/overlap) between the work of WFP and that of other partners (UN agencies, UNDAF, humanitarian and development actors etc.)? What was done at design stage to establish complementarities? Were these efforts successful? Were partnership created? If yes, please provide examples. If not, what were the main constraints?
11. **Crosscutting issues: gender, partnership, protection and environment.** How are crosscutting issues mainstreamed into the design of the PRRO?

Results of the Operation

12. What in your view have been the main results of the operation? To what extent have the expected results been achieved? What have been the main difficulties and problems that you have faced in making progress? What actions were taken/should be taken to address these? How sustainable are they?
13. To what extent has WFP contributed to capacity development of government counterparts in terms of human and institutional capacity? What are the constraints to capacity strengthening? How much does this capacity development contribute to transition?
14. What has WFP actually done to ensure programme synergies between the DEV and the PRRO?
15. What activities did the CO undertake to promote/implement Gender empowerment and equality of women and protection of beneficiaries? Any innovation? If not why not? If yes, what activities? What about protection, partnership, environmental issues?
16. Are there unexpected results of the operation? Please provide details.
17. How efficient has been the PRRO? (Optimization of resources, efforts to contain costs, timeliness of distributions)

Internal & external factors that have affected the operation

18. What in your view have been the strong points of WFP's work? What have been the challenges in implementing the operation?
19. How has the context changed since the beginning of the programme and what have been the implications for decision-making? Did WFP make the right decisions in light of the context?
20. What have been the main internal factors that have had an influence on the PRRO implementation over the period? Did the CO request support from WFP HQ or RB? If so, what type of support? Did it respond to the CO expressed needs? Extent the M&E system support the PRRO? Were procedures clear enough?
21. What has been the level of collaboration with the other UN agencies and relevant humanitarian & development actors working on food security, nutrition, disaster reduction as well as with implementing partners? Please give examples of areas of work and type of complementary inputs provided by them to enhance PRRO's implementation and progress towards its objectives/sustainability (as relevant)?
22. What have been the main external factors that have had an influence on the PRRO implementation over the period? To what extent has the level of resourcing led to the reduction in activities? Which activities were most affected and why?
23. How do the Government, NGOs, and donors perceive the PRRO?
24. How does WFP CO communicate with its stakeholders? How might communication with various stakeholders be improved?
25. In your opinion, what are the priorities for the coming/remaining period?

Questions for Bilateral Donors

Relevance/design

1. Were you consulted at the design stage? And if so in which way? Are you satisfied with the consultation process?

2. How much were objectives, activities, transfer modalities, targeting relevant? In your opinion, how relevant and appropriate is the PRRO design to the priority needs of the beneficiaries: selection of departments, communes, beneficiary categories, transfer modalities (food vs. cash)? Has it been able to adjust to the evolution of the context based on needs assessment? Do other activities would have been more relevant (rather than food contingency stock, participation within assets)? How innovative were the activities?
3. Has it adequately addressed capacity needs? Has it adequately addressed gender empowerment and equality of women and protection of beneficiaries? Any other priority areas and crosscutting issues (environment) it should have addressed? Has WFP sought the right partnerships?
4. Do you think the PRRO is coherent with national policies and strategies (food security, nutrition, social protection/social safety nets, EPR, DRR, social, gender etc.)? What about complementarities/synergies between the PRRO and development/humanitarian assistance programmes supported by you or assisted by other actors (UN, NGOs).

Implementation/results

5. Do you have information on the PRRO implementation? If so, through which mechanism (working group meetings, WFP reports, Kore Lavi reports, special reports to you, etc.)?
6. What is your assessment about the PRRO's success in meeting its targets (Effectiveness, Efficiency, Impact, Sustainability)? What are the main positive and main negative results of the PRRO? Has the Social Network Database been of a support during emergency response? What are your views particularly on the following: to your development/humanitarian assistance in Haiti? Any other issues?
7. What opportunities exist that have not been explored (in areas such as food security, nutrition, EPR, DRR, gender equity, protection, partnership, environment, capacity building, etc.)?
8. Are you satisfied with the information sharing process and with the quality of information received?

Factors affecting results

9. In your view what were most enabling factors and constraints? Probe the following: adequacy of implementation cooperation with national partners; adequacy of partnerships (with UN agencies and NGOs) in areas such as food security, nutrition, EPR, DRR, gender equity, etc.; any opportunities for collaboration that WFP did not explore?
10. How would you assess the nature of the relationship between WFP and partner UN agencies?

Concluding Remarks

11. Any recommendations on how to improve implementation?
12. In your opinion, what are the priorities for the coming/remaining period?

Questions for UN Agencies

Relevance/design

1. Were you consulted at the design stage? And if so in which way? Are you satisfied with the consultation process?

2. How much were objectives, activities, transfer modalities, targeting relevant? In your opinion, how relevant and appropriate is the PRRO design to the priority needs of the beneficiaries: selection of departments, communes, beneficiary categories, transfer modalities (food vs. cash)? Has it been able to adjust to the evolution of the context based on needs assessment? Do other activities would have been more relevant (rather than food contingency stock, participation within assets)? How innovative were the activities?
3. Has it adequately addressed capacity needs? Has it adequately addressed gender empowerment and equality of women and protection of beneficiaries? Any other priority areas and crosscutting issues (environment) it should have addressed? Has WFP sought the right partnerships? Any recommendations regarding crosscutting issues?
4. Do you think the PRRO is coherent with national policies and strategies (food security, nutrition, social protection/social safety nets, EPR, DRR, social, gender etc.)? What about complementarities/synergies between the PRRO and development/humanitarian assistance programmes assisted by your agency.

Implementation/results

(If agency has collaborated with WFP in implementing the PRRO)

5. In what ways has your organization collaborated with the implementation of the PRRO? What factors have influenced positively or negatively on the performance of the collaboration during this period?
6. What is your assessment about the PRRO's success in meeting its targets (Effectiveness, Efficiency, Impact, Sustainability)? What are the main positive and main negative results of the PRRO? Has the Social Network Database been of a support during emergency response? What are your views particularly on the following: its geographic focus, relevance to national priorities, and relevance to your country's priorities in Haiti? Any other issues?
7. What opportunities exist that have not been explored (in areas such as food security, nutrition, EPR, DRR, gender equity, protection, partnership, environment, capacity building, etc.)?

(If agency has not collaborated with WFP in implementing the PRRO)

8. Do you have information on the PRRO implementation? If so, through which mechanism (working group meetings, WFP reports, Kore Lavi reports, etc.)? Are you satisfied with the information sharing process and with the quality of information received?
9. Based on the information you have: what is your assessment about the PRRO's success in meeting its targets? What are your views particularly on the following: its geographic focus, relevance to national priorities, and relevance to your country's priorities in Haiti? Any other issues? What are the main positive and main negative results of the PRRO?
10. How well has the WFP programme mainstreamed gender issues according to the United Nations' mandate and policies? What about protection, partnership, environmental issues?

Factors affecting results

11. In your view what were most enabling factors and constraints? Any opportunities for collaboration that WFP did not explore?

Concluding Remarks

12. Any recommendations on how to improve implementation?
13. In your opinion, what are the priorities for the coming/remaining period?

Questions for NGO Partners

Relevance/design

1. Were you consulted at the design stage? And if so in which way? Are you satisfied with the consultation process?
2. How much were objectives, activities, transfer modalities, targeting relevant? In your opinion, how relevant and appropriate is the PRRO design to the priority needs of the beneficiaries: selection of departments, communes, beneficiary categories, transfer modalities (food vs. cash)? Has it adequately addressed capacity needs? Has it been able to adjust to the evolution of the context based on needs assessment? Do other activities would have been more relevant (rather than food contingency stock, participation within assets)? How innovative were the activities?
3. Has it adequately addressed gender empowerment and equality of women and protection of beneficiaries? Any other priority areas and crosscutting issues (environment) it should have addressed? How WFP sought the right partnership? Any recommendations regarding crosscutting issues?
4. Do you think the PRRO is coherent with national policies and strategies (food security, nutrition, social protection/social safety nets, EPR, DRR, social, gender etc.)? What about complementarities/synergies between the PRRO and development/humanitarian assistance programmes assisted by your organisation.

Implementation/results

5. In what ways has your organization collaborated with the implementation of the PRRO? What factors have influenced positively or negatively on the performance of the collaboration during this period?
6. What is your assessment about the PRRO's success in meeting its targets (Effectiveness, Efficiency, Impact)? What are the main positive and main negative results of the PRRO? Has the Social Network Database been of a support during emergency response? What are your views particularly on the following: its geographic focus, relevance to national priorities, and relevance to your country's priorities in Haiti? Any other issues?
7. To what extent are the activities implemented sustainable? How the nutrition and CFA activities have contributed to the social protection scheme? How effective has been the building capacity of Government actors? To what extent has the PRRO support transition?
8. What opportunities exist that have not been explored (in areas such as food security, nutrition, EPR, DDR, gender equity, protection, partnership, environment, capacity building, etc.)?
9. How well has the WFP programme mainstreamed gender issues according to the United Nations' mandate and policies? What the other crosscutting issues: protection, partnership, and environment?

Factors affecting results

10. In your view what were most enabling factors and constraints? Any opportunities for collaboration that WFP did not explore?
11. What potential WFP internal factors you may be aware of, have influenced in a positive / negative way the observed results? Lessons learnt.

12. What potential external factors have influenced in a positive / negative way the observed results? Lessons learnt.

Concluding Remarks

13. Any recommendations on how to improve implementation?
14. In your opinion, what are the priorities for the coming/remaining period?

GFD & EPR (SO1)

Questions for GoH: MCFDF

1. Can you please describe activities conducted in relation with WFP?

Relevance

2. Were you consulted at the design stage? And if so in which way? Are you satisfied with the consultation process?
3. In your opinion, how relevant and appropriate is the PRRO design to the priority needs of the beneficiaries: selection of departments, communes, beneficiary categories?
4. Has it adequately addressed gender empowerment and equality of women and protection of beneficiaries? Any recommendations regarding crosscutting issues?
5. Do you think the PRRO is coherent with national policies and strategies (Social protection, social, gender)?
6. What about complementarities/synergies between the PRRO and development assistance programmes supported by GoH (by your minister/MCFDF or other ministries)?

Results

7. Do you have information on the PRRO implementation? If so, through which mechanism (working group meetings, WFP reports, special reports to you, etc.)?
8. In what ways has your Minister collaborated with the implementation of the PRRO?
9. What is your assessment about the PRRO's success in meeting its targets (Effectiveness, Efficiency, Impact, Sustainability)?
10. What factors have influenced positively or negatively on the performance of the collaboration during this period?
11. What opportunities exist that have not been explored (in areas such gender equity, protection, partnership, capacity building, etc.)?
12. Are you satisfied with the information sharing process and with the quality of information received?

Factors

13. In your view what were most enabling factors and constraints?
14. How would you assess the nature of the relationship between WFP and your Ministry?
15. What potential WFP internal factors you may be aware of, have influenced in a positive / negative way the observed results? Lessons learnt.
16. Any opportunities for collaboration that WFP did not explore?

Concluding Remarks

17. Any recommendations on how to improve implementation?
18. In your opinion, what are the priorities for the coming/remaining period?

Questions for GoH: MICT/DCP

1. Please describe activities conducted in relation with WFP?

Relevance

2. Were you consulted at the design stage? And if so in which way? Are you satisfied with the consultation process?
3. What are your views on PRRO's design, particularly on the following: (i) geographic targeting (choice of departments and communes); (ii) choice of activities: capacity building in EPR, DRR, rapid assessment after a shock, collection and analysis of disaster data, elaboration of contingency plan, technical support in EPR & DRR monitoring and assistance (iii) beneficiary selection criteria; (iv) relevance to national strategies and normative guidance?
4. In your opinion, how relevant and appropriate is the PRRO design to the priority needs of the beneficiaries: selection of departments, communes, beneficiary categories?
5. Has it adequately addressed gender empowerment and equality of women and protection of beneficiaries? Any recommendations regarding crosscutting issues?
6. Do you think the PRRO is coherent with national policies and strategies (EPR, DRR, Social protection, gender)?
7. What about complementarities/synergies between the PRRO and development assistance programmes supported by GoH (by your minister/MICT/DPC or other ministries)?
8. What opportunities exist for strengthening programme linkages to achieve greater synergy between WFP and other food security, EPR, DRR, CCA, Resilience partners?

Results

9. Do you have information on the PRRO implementation? If so, through which mechanism (working group meetings, WFP reports, special reports to you, etc.)?
10. In what ways has your Minister collaborated with the implementation of the PRRO?
11. What is your assessment about the PRRO's success in meeting its targets (Effectiveness, Efficiency, Impact, Sustainability)?
12. What factors have influenced positively or negatively on the performance of the collaboration during this period?
13. What opportunities exist that have not been explored (in areas such EPR, DRR, gender equity, protection, partnership, capacity building, etc.)?
14. Are you satisfied with the information sharing process and with the quality of information received?

Factors

15. In your view what were most enabling factors and constraints?
16. How would you assess the nature of the relationship between WFP and your ministry?
17. What potential WFP internal factors you may be aware of, have influenced in a positive / negative way the observed results? Lessons learnt.

18. Any opportunities for collaboration that WFP did not explore?

Concluding Remarks

19. Any recommendations on how to improve implementation?

20. In your opinion, what are the priorities for the coming/remaining period?

Questions for GoH: MARNDR

1. Please describe activities conducted in relation with WFP?

Relevance

2. Were you involved in the PRRO design? And if so how? Are you satisfied with the consultation process initiated by WFP? Did it lead to choosing activities that address MARNDR priorities? If not what would you propose to enhance/improve this process?

3. What are your views on PRRO's design, particularly on the following: (i) general food distribution/GFD (ii) geographic targeting (choice of departments and communes); (iii) choice of activities: capacity building in collection and analysis of food security data; (iv) technical support on FS monitoring and assistance; (v) beneficiary selection criteria; (vi) relevance to national strategies and normative guidance?

4. Are there other priorities that the PRRO could have addressed? If so which and how?

5. What are MARNDR gender-related priorities/issues of concern? How well has the PRRO's design addressed them?

6. What opportunities exist for strengthening programme linkages to achieve greater synergy between WFP and other food security, EPR, DRR partners?

Implementation/results

7. Do you have information on the PRRO implementation? If so, through which mechanism?

8. Overall, what is the information you have/your opinion regarding PRRO's implementation? Were the targets in terms of beneficiary numbers met? What factors have influenced positively or negatively the WFP performance?

9. What opportunities exist that have not been explored to improve implementation?

10. Based on the information you have: what is your assessment about the PRRO's success in meeting its objectives?

11. How well has the PRRO performed in relation to MARNDR gender-related priorities?

Factors affecting results

12. In your view what were most enabling factors and constraints?

13. Any opportunities for collaboration that WFP did not explore?

Concluding Remarks

14. Any recommendations on how to improve implementation?

15. In your opinion, what are the priorities for the coming/remaining period?

Questions for GoH: CNSA

1. Please describe activities conducted in relation with WFP?

Relevance

2. Were you involved in the PRRO design? And if so how? Are you satisfied with the consultation process initiated by WFP? Did it lead to choosing activities that address CNSA priorities? If not what would you propose to enhance/improve this process?
3. How much has CNSA been considered in the design of the PRRO?
4. What are the relevant coordination structures where you work with WFP?
5. Coherence with the national Strategic Plan?
6. Relevance of emergency food security assessment conducted? Gap / Overlap?
7. What are your views on PRRO's design, particularly on the following: (i) vulnerability assessment and mapping (VAM) (ii) integration of the VAM findings in PRRO design (geographic and household targeting); (iii) choice of activities: GFD, CFA, capacity building; (iv) technical support on FS assessment, monitoring and assistance; (v) beneficiary selection criteria; (vi) relevance to national strategies and normative guidance?
8. Are there other priorities that the PRRO could have addressed? If so which and how?
9. What are CNSA gender-related priorities/issues of concern? How well has the PRRO's design addressed them?
10. What opportunities exist for strengthening programme linkages to achieve greater synergy between WFP and other food security, EPR, DRR, CCA, Resilience partners?

Implementation/results

11. How the PRRO help the GoH design governmental policies and programmes?
12. What do you know about the VAM? Did CNSA involve you in the implementation?
13. Is there a VAM unit in-country? If not, how does this absence impact the PRRO results?
14. To what extent has WFP contributed to capacity development of CNSA in terms of material and human capacity? What are the constraints?
15. What have been the primary successes and challenges in building capacity of CNSA on vulnerability assessment, EFSA, etc.?
16. Does the current PRRO contribute to addressing and mitigating Haiti's food security problem? How?
17. What changes would you propose for future WFP programmes in your field of activities?
18. What is the quality of the partnership with WFP? Are you satisfied? Any opportunities or constraints? What changes should be made to improve this partnership?
19. What is the quality and quantity of support received from WFP? How would you qualify the level of funding, quality and quantity of CNSA staff to contribute in WFP activities?
20. Do you have information on the PRRO implementation? If so, through which mechanism?
21. Overall, what is the information you have/your opinion regarding the PRRO's implementation? Were the targets in terms of beneficiary numbers met? What factors have influenced positively or negatively WFP performance?
22. What opportunities exist that have not been explored to improve implementation?
23. Based on the information you have: what is your assessment about the PRRO's success in meeting its objectives?
24. How well has the PRRO performed in relation to CNSA gender-related priorities?

Factors affecting results

25. In your view what were the most enabling factors and constraints?

26. Any opportunities for collaboration that WFP did not explore?

Concluding Remarks

27. Any recommendations on how to improve implementation?

28. In your opinion, what are the priorities for the coming/remaining period?

FGD with Community Leaders & Beneficiaries

The ET will introduce the purpose of the FGD, and get verbal consent. The ET will assure FGD members that the information they shall share will be treated anonymously.

The discussion will focus on beneficiaries and communities' knowledge about / understanding of / views (satisfaction or not) on the PRRO's:

Relevance

1. What do you know about WFP?
2. How were you involved in the WFP programme? needs assessment, prioritization of needs, relevance of needs, usefulness, timeliness of programme, planning)
3. Are all the commodities provided, necessary? Which ones are not?

Results

4. What do you think are the benefits of this programme for you as women / men / young people and your communities?
5. How do the food distribution, cash for work cater for the needs of different age-groups and sexes within your community?
6. How has access to the services/activities of the programme been influenced by the economic or political trends in your community?
7. In your view what factors have influenced positively or negatively on the performance of the programme?
8. What would you like to be done in this programme, for it to be of greater benefit to your community?

Factors

9. In your view what were most enabling factors and constraints?
10. In your view what WFP should do to improve the programme?

Concluding Remarks

11. Any recommendations on how to improve the programme?

CFA (SO2) & RESILIENCE (SO3)

Supplementary Questions for WFP

Relevance

1. Meet the needs of the food insecure, malnourished, vulnerable (to disasters & economic shocks) population?
 - a) How relevant are Outcomes, Outputs, Activities (SO2/SO3)? What specific characteristics and similarities? Any proposition at project design stage / in the future?

- b) Please describe each activity under SO2 & SO3. How much are they innovative?
 - c) Should WFP have engaged further on SO3 in Haiti at project design stage / in the future? Is resilience building exclusively under SO3 within PRRO? Has WFP sufficiently supported resilience issues within PRRO 200618?
 - d) How has WFP engaged on CCA? To which extent? Should go further and how?
 - e) How has WFP engaged on DRR? To which extent? Should go further and how?
 - f) How relevant are assets defined under CFA? How much do they integrate gender issues- how to go further? How much do assets built/restored enable reducing risk of natural disasters- how to go further? To which extend have assets building enable to sensitize and strengthen competencies of communities targeted- how to go further?
 - g) How relevant are Transfer modalities and Targeting (SO2/SO3)? What are positive / negative impacts of selecting cash transfer (rather than voucher or food)? How was the private company selected, was it transparent enough?
 - h) Were the crosscutting issues designed the most aPRROprieate (protection, gender, partnership)? Are some important ones missing?
2. Be coherent with relevant stated national policies?
- a) What are the stated national policies, strategies, programmes related to SO2 & 3? (food security, livelihood, risk reducing, resilience but also gender, protection, environment, partnership) Is WFP sufficiently coherent with each of them- how to strengthen?
 - b) What has been the quality of the consultation process with national stakeholders?
 - c) What were the capacity building activities designed for the authorities under SO2 & 3? To which extent was WFP capacity building towards the authorities relevant? To which extent is WFP support to safety net system (Kore Lavi programme) relevant? To which extend do the capacity building activities planned respond to national and decentralized authorities' needs? What consultation process was implemented? What should be plan differently at project design stage / in the future?
3. Be coherent with project DEV200150 in particular Purchase for Progress (P4P)
- a) Is there any coherence between SO2, SO3 and DEV200150? How to go further?
 - b) Be coherent with relevant WFP & UN-wide system strategies, policies, guidance?
 - c) To which extent is the PRRO coherent with relevant WFP & UN-wide system strategies? What about the 3 crosscutting issues designed?

Results

4. What is the level of attainment of the planned outputs?
- a) Was the geographic / HH targeting the most aPRROprieate? Based of which relevant national information? Any other targeting factors ?Did it well adapt to the evolution of the context all along the programme?
 - b) Number of capacity building sessions organized to support the national / local authorities – vs number planned? Number of capacity building sessions organized to support the safety net system (Kore Lavi programme) – vs

- number planned? Level of participation, level of appreciation, level of integration? How to go further?
- c) Total amount of cash transferred? Nb of assets built/ restored by type & unit of measure?
 - d) Number of technical assistance activities provided by WFP and number of ensuing results (e.g. number of reports)? National system monitoring trends in food security and nutrition strengthened (SO2.3) / policy advice and technical support to enhance management of food supply chain, food assistance, nutrition and food security systems, including food security information systems (SO2.4) / national safety nets for food security, nutrition education, community assets and overall contribution to resilience-building supported (SO3.3)
 - e) Protection: Were communities well informed about the programme: who is included, what people will receive, where people can complain? / Proportion of assisted people who do not experience safety problems travelling to, from and/or at WFP programme site?
 - f) Gender: Proportion of women beneficiaries in leadership positions of project management committee? / Proportion of women project management committee members trained on modalities of cash distribution? / Proportion of HH where females and males make decisions together over the use of cash? / Proportion of HH where females make decisions?
 - g) Partnership: Amounts of complementary funds provided to the project by partners (including NGOs, INGOs, Civil Society, Private Sector organizations, International Financial Institutions, Regional Development Bank)? / Number of partner organisations that provide complementary inputs and services? / Proportion of project activities implemented with the engagement of complementary partners?
5. To what extent have outputs led to the realisation of the operation objectives? Any unintended effects highlighted?
- a) Through which SO and activities, have WFP supported building resilience of population while implementing PRRO 200618? To which extent is resilience issue well defined and understood within the CO?
 - b) Have the transfer modalities (cash rather than voucher or food) and the amount provided enabled reaching adequate food consumption and maintaining it over assistance period for targeted households?
 - c) Have assets and/or basic services been improved (built, restored, maintained)? What positive impact observed / assumed?
 - d) Have national / local capacities being developed to address national food insecurity needs?
 - e) Have risk reduction capacities of countries, communities and institutions being strengthened?
6. How different activities of the operation are synergetic with other WFP operations?
- How have different activities complemented with what other actors are doing to contribute to the overriding WFP objectives in the country?
7. How efficient is the operation?

- a) How efficient was the private company in charge of cash transfer? How to improve?
- b) How much do management have enable to contain cash transfer, assets building, capacity building costs?
- c) Were cash transfer, assets building and capacity building realized on time?

Factors

8. Internal Factors

- a) Are technical capacities within WFP CO on cash for assets, resilience, capacity building / food security, need assessment aPRROprieate? Strength, Weakness based on evidence? Sufficient support from RB, HQ? Any recommendation?
- b) Are monitoring processes & systems aPRROprieate? Strength, Weakness based on evidence? Sufficient support from RB, HQ? Any recommendation?
- c) Transparency of procedures for identification of implementing partners? Based on competitive analysis (for Sogexpress)? Any other partner within private sector?
- d) System to monitor/evaluate implementing partners? What came out of analysis? Any adjustment? Evolution of partnership over time?
- e) System to monitor/evaluate protection issue? Any adjustment? Evolution of protection system put in place over time?
- f) System to monitor/evaluate gender issue? Any adjustment? Evolution over time?
- g) Are technical capacities within WFO CO on gender, protection, partnership aPRROprieate?, Weakness based on evidence? Sufficient support from RB, HQ? Any recommendation?

9. External Factors

- a) Are partnership arrangements adequate with implementing partners, authorities, etc.?
- b) Capacity to monitor external factors and respond?

Supplementary Questions to UN agencies

UNDP - DRR / CCA / Resilience

Relevance

1. How much do you know on WFP engagements on DRR, CCA, Resilience issues?
2. Are they aPRROprieate to meet the needs of vulnerable population to disasters and economic shocks? Are activities, targeting, transfer modalities aPRROprieate? Any recommendations?
3. Consultation with relevant national stakeholders and UN agencies (PNUD)?
4. Coherence with relevant actors working on these issues?
5. Should WFP engage further on those issues? Any recommendations?

Results

6. To what extent have WFP outputs led to strengthening DRR, CCA, Resilience capacities? At community / local / national levels? Strength, Weakness based on evidence?
7. Are food contingency stocks the most aPRROprieate?
8. How have activities been synergetic with what UNDP is implementing? How to go further?

9. What is the likelihood that the benefits will continue after the end of the programme?

Factors

10. Effective or lack of partnership & coordination arrangements?
11. How effectively has WFP responded to external changing environment?

UNEP – Environment

Relevance

1. Is WFP programme mainstreaming environmental issues? How? Is it appropriate?
2. Consultation with relevant national stakeholders and UN agencies (UNEP)?
3. Coherence with relevant actors working on these issues?
4. Should WFP engage further on those issues? Any recommendations?

Results

5. To what extent have WFP outputs led to mainstreaming environment? At community / local / national levels? Strength, Weakness based on evidence?
6. How have activities been synergetic with what UNEP is implementing? How to go further?
7. What is the likelihood that the benefits will continue after the end of the programme?

Factors

8. Effective or lack of partnership & coordination arrangements?
9. How effectively has WFP responded to external changing environment?

FAO – CFA / FEWSNET / Assessment / DRR, CCA, Resilience

Please describe activities conducted in relation with WFP

Relevance

1. Coherence between WFP and FAO objective, activities, targeting, modalities?
2. Complementary between WFP and FAO / other relevant humanitarian & development stakeholders?
3. Coherence with relevant stated national policies?
4. Relevance of assessment conducted? Gap / Overlap?

Results

5. Quality of assessment conducted jointly? Any recommendations?
6. How have activities been synergetic with what FAO is implementing? How to go further?
7. What is the likelihood that the benefits will continue after the end of the programme?
8. How do CFA activities contribute to the national social protection system? How to take advantage of the social network database during emergency responses?

Factors

9. Effective or lack of partnership & coordination arrangements?
10. How effectively has WFP responded to external changing environment?

Concluding Remarks

11. Any recommendations on how to improve implementation?
12. In your opinion, what are the priorities for the coming/remaining period?

Questions for authorities at national / departmental levels

MARNDR

Please describe activities conducted in relation with WFP

Relevance

1. Were you involved in the PRRO design? And if so how? Are you satisfied with the consultation process initiated by WFP? Did it lead to choosing activities that address MARNDR priorities? If not what would you propose to enhance/improve this process?
2. What are your views on PRRO's design, particularly on the following: (i) geographic targeting (choice of departments and communes); (ii) choice of activities: capacity building in collection and analysis of food security data (SO2.3), FS monitoring reports produced (SO2.3), national assessment on FS (SO2.4), technical support on FS monitoring and assistance (SO2.4); (iii) beneficiary selection criteria; (iv) transfer modalities: cash transfer, amount transferred, protection issues (v) combining capacity building, monitoring exercises, technical support; (vi) relevance to national strategies and normative guidance?
3. Are there other priorities that the PRRO could have addressed? If so which and how?
4. What are MARNDR gender-related priorities/issues of concern? How well has the PRRO's design addressed them?
5. What are MARNDR environmental-related priorities/issues of concern? How well has the PRRO's design addressed them?
6. What opportunities exist for strengthening programme linkages to achieve greater synergy between WFP and other food security, DRR, CCA, Resilience partners?

Results

7. Do you have information on the PRRO implementation? If so, through which mechanism?
8. Overall, what is the information you have/your opinion regarding PRRO's implementation? More specifically, how did WFP perform in terms of identification of beneficiaries, implementing CFA, follow-up of beneficiaries, monitoring of the food security situation, strengthening national / departmental capacities?
9. Based on the information you have: what is your assessment about the PRRO's success in meeting its objectives?
10. How well has the PRRO performed in relation to MARNDRP gender-related priorities?
11. What is the likelihood that the benefits will continue after the end of the programme?

Factors

12. What factors have influenced positively or negatively their respective performance?
13. What opportunities exist that have not been explored to improve implementation?

Concluding Remarks

13. Any recommendations on how to improve implementation?
14. In your opinion, what are the priorities for the coming/remaining period?

MAST

Please describe activities conducted in relation with WFP

Relevance

1. Were you involved in the PRRO design? And if so how? Are you satisfied with the consultation process initiated by WFP? Did it lead to choosing activities that address MAST priorities? If not what would you propose to enhance/improve this process?
2. What are your views on PRRO's design, particularly on the following: (i) geographic targeting (choice of departments and communes); (ii) choice of activities: support to national safety net system, taking advantage of social network database during emergency responses; (iii) beneficiary selection criteria; (iv) modalities: capacity building sessions (v) combining cash transfer and assets building; (vi) relevance to national strategies and normative guidance?
3. Are there other priorities that the PRRO could have addressed? If so which and how?
4. What are MARNDR gender-related priorities/issues of concern? How well has the PRRO's design addressed them?
5. What are MARNDR environmental-related priorities/issues of concern? How well has the PRRO's design addressed them?
6. What opportunities exist for strengthening programme linkages to achieve greater synergy between WFP and other food security, DRR, CCA, Resilience partners?

Results

7. Do you have information on the PRRO implementation? If so, through which mechanism?
8. Overall, what is the information you have/your opinion regarding PRRO's implementation? More specifically, how did WFP perform in terms of identification of beneficiaries, implementing activities, follow-up of beneficiaries and actors trained, monitoring of the food security situation, strengthening national / departmental capacities?
9. Based on the information you have: what is your assessment about the PRRO's success in meeting its objectives?
10. How well has the PRRO performed in relation to MAST gender-related priorities?
11. What is the likelihood that the national safety net system will support resilience building? What is the likelihood that the benefits will continue after the end of the programme?

Factors

12. What factors have influenced positively or negatively their respective performance?
13. What opportunities exist that have not been explored to improve implementation?

Concluding Remarks

14. Any recommendations on how to improve implementation?
15. In your opinion, what are the priorities for the coming/remaining period?

•

FGD with beneficiaries and their community

The discussion will focus on beneficiaries and communities' knowledge about / understanding of / views (satisfaction or not) on the PRRO'

Relevance

1. Were you involved in the PRRO design? And if so how? Are you satisfied with the consultation process initiated by WFP? Did it lead to choosing activities that address community priorities? If not what would you propose to enhance/improve this process?
2. What are your views on PRRO's design, particularly on the following: (i) geographic targeting (choice of communes); (ii) choice of activities: Cash Transfer, Assets Building, others? ; (iii) beneficiary selection criteria; (iv) modalities: cash transfer (vs food, vouchers), building assets, capacity building (v) combining cash transfer and assets building; (vi) relevance to national strategies and normative guidance?
3. Are there other priorities that the PRRO could have addressed? If so which and how?
4. Protection modalities: people were informed about who is included, what people will receive, where people can complaint /safety problems while traveling to WFP sites
5. Gender modalities: proportion of women beneficiaries in leadership positions of project management committees / proportion of women project management committee members trained on modalities of cash transfer / proportion of hh where men and women make decision together over the use of cash
6. What opportunities exist for reducing risk and enabling communities to meet their own food needs?

Results

7. To which extent was PRRO implementation a success / failure?
8. How did WFP perform in terms of identification of beneficiaries, implementing activities, follow-up of beneficiaries, strengthening capacities ?
9. Protection: were people informed about who is included, what people will receive, where people can complaint /safety problems while traveling to WFP sites ?
10. Gender: proportion of women beneficiaries in leadership positions of project management committees / proportion of women project management committee members trained on modalities of cash transfer / proportion of hh where men and women make decision together over the use of cash
11. What is the likelihood that the PRRO has reduce risk and enable communities to meet their own FS needs in the future?
12. What is the likelihood that the benefits will continue after the end of the programme?

Factors

13. What factors have influenced positively or negatively their respective performance?
14. What opportunities exist that have not been explored to improve implementation?

Concluding Remarks

15. Any recommendations on how to improve implementation?
16. In your opinion, what are the priorities for the coming/remaining period?

MAM TREATMENT AND NUTRITION PREVENTION

Questions for MSPP/Nutrition at central level

Relevance

1. Were you involved in the PRRO design? And if so how? Are you satisfied with the consultation process initiated by WFP? Did it lead to choosing activities that address MSPP priorities in the area of nutrition? If not what would you propose to enhance/improve this process?
2. What are your views on PRRO's design, particularly on the following: (i) geographic targeting (choice of departments and communes); (ii) choice of activities: MAM treatment with more focus/resources allocated to stunting prevention through the distribution of rations to caregivers of children under 2 years and to PLW; (iii) beneficiary selection criteria; (iv) ration choice: composition and nutritive value, duration of assistance; (v) combining food assistance with nutrition counselling; (vi) relevance to national strategies and normative guidance?
3. Are there other priorities that the PRRO could have addressed? If so which and how?
4. What are MSPP gender-related priorities/issues of concern? How well has the PRRO's design addressed them?
5. What opportunities exist for strengthening programme linkages to achieve greater synergy between WFP and other nutrition partners?

Implementation/results

6. Do you have information on the PRRO implementation? If so, through which mechanism?
7. Overall, what is the information you have/your opinion regarding PRRO's implementation? More specifically, how did DSA perform in terms of identification of beneficiaries, food distribution, follow-up of individual beneficiaries, monitoring of the nutrition situation in Artibonite? Were the targets in terms of beneficiary numbers met? How have they performed as compared to departments where WFP staff is responsible for food distribution? What is your preferred option and why? What factors have influenced positively or negatively their respective performance? What opportunities exist that have not been explored to improve implementation?
8. Based on the information you have: what is your assessment about the PRRO's success in meeting its objectives?
9. How well has the PRRO performed in relation to MSPP gender-related priorities?

Factors affecting results

10. In your view what were most enabling factors and constraints? Any opportunities for collaboration that WFP did not explore?

Concluding Remarks

11. Any recommendations on how to improve implementation?
12. In your opinion, what are the priorities for the coming/remaining period?

Questions for MSPP staff at department level

Relevance

1. Were you involved in the PRRO design? And if so how? Are you satisfied with the consultation process initiated by WFP? Did it lead to choosing activities that address priorities in the area of nutrition in your department? If not what would you propose to enhance/improve this process?
2. What are your views on PRRO's design, particularly on the following: (i) geographic targeting (choice of departments and communes); (ii) choice of activities: MAM treatment with more focus/resources allocated to stunting prevention through the distribution of rations to caregivers of children under 2 years and to PLW; (iii) beneficiary selection criteria; (iv) ration choice: composition and nutritive value, duration of assistance; (v) combining food assistance with nutrition counselling; (vi) relevance to national strategies and normative guidance?
3. Are there other priorities that the PRRO could have addressed? If so which and how?
4. What are MSPP/DAS gender-related priorities/issues of concern? How well has the PRRO's design addressed them?

Implementation/Results/Factors affecting results

5. Did you meet set targets (number of beneficiaries, nutrition counselling) ? What has worked well and what has worked less well ? probe as necessary on issues of resources (human, technical, financial, material), monitoring, reporting and logistics. How have these been addressed.
6. To what extent does WFP food assistance complement other nutrition interventions in the Department?
7. Was any training provided by WFP ? If so how often between 2014 and 2015? On what subjects? How useful was it?
8. Are there other nutrition interventions supported by partners other than WFP in your Department? Are there any linkages between them? How well is this working?

Concluding Remarks

9. Any recommendations on how to improve implementation?
10. In your opinion, what are the priorities for the coming/remaining period?

Questions for health staff in hospitals, health centres and dispensaries **Knowledge about the programme's objectives and outcomes**

1. What do you see as the purpose of the programme?
2. What changes have you seen since WFP's food assistance has been provided? Have these changes been different for boys and girls, in what way? Have there been any changes in terms of attendance of caregivers for prevention & curative health services? Particularly those living at long walking distances?

Implementation

3. Have food deliveries during the last year (or last six months) been regular and complete (all items received in the requested amounts)?
4. If not, why? (Were you late in submitting required requests, local procurement delayed, etc.?)
5. Has the health facility had to interrupt food support for any extended periods during the last year (or 6 months)? For what reasons (commodities not received at

all or not in the planned quantities, commodities received too close to or after the « best before date »)?

6. Do you adhere to the official ration scale and number of days/months of eligibility? If not, for what reasons (commodities not received at all or not in the planned quantities)
7. What is your opinion about the ration composition and size?
8. Do you provide nutrition counselling to caregivers and PLW? (Ask to see toolkit) How often? On what key subjects?
9. What has worked well? (Probe as necessary about logistics, relationship with the community, management of scheduling MAM treatment)

Monitoring & reporting

10. What records do you keep on MAM treatment beneficiaries (ask to see these, check if gender disaggregated)? How easy/difficult to fill the tools (forms, registers, reports, etc.)
11. Have you received training from WFP? On what subjects (logistics, record-keeping, nutrition messaging/counselling, etc.)

Concluding Remarks

1. What have been the constraints and challenges? How have these been addressed?
2. What suggestions do you have on how to improve the intervention?

The visit will also include **observations on:**

- Adequacy of food storage (hygiene, record-keeping, existence of measuring scales, etc.)
- Adequacy of recording (review a random sample of child health growth charts)
- If food distribution is on-going: food handling, verification of beneficiaries

FGD with caregivers of beneficiary children and PLWs

The discussion will focus on beneficiaries and communities' knowledge about / understanding of / views (satisfaction or not) on the PRRO's:

1. Objectives
2. Implementation modalities: selection criteria and food distribution (location, timing, efficiency)
3. The ration composition and size: their knowledge about the scale; extent to which the scale was respected or not; duration of their entitlement; their utilization of the ration (for whom and for how long)
4. Nutrition counselling: overall relevance to their needs, main messages they retained and are applying
5. Suggestions on how to improve the intervention

Annex 7: Fieldwork Schedule

Day and Date	Mirella Mokbel Genequand Team leader (Focus: Nutrition)	Blanche Renaudin (Focus: food security assessment and CFA)	Robert Philippe (Focus: Relief, EPR and database)
Port-au-Prince (Monday 18 to Friday 22nd)			
Monday 18 April		Arrived in Port-au-Prince (PAP)	
Tuesday 19 April	Arrived in PAP	Interviews: MAST WFP CO: Head of Programme	Interviews: MAST WFP CO: Head of Programme
Wednesday 20 April	Group meeting WFP CO: Deputy CD, Head of Programme, M&E Officer, National Nutrition Officer, National EPR/Resilience Officer		
	Interviews: WFP CO: National nutrition officer CARE/Kore Lavi	Interviews: CNSA Fewsnet	Interviews: CNSA
Thursday 21 April	Interviews: FONDEFH Nutrition Department/MSPP ACF/Kore Lavi Embassy of Canada	Interviews: Swiss Embassy USAID GRASOL Embassy of Canada WFP CO: National EPR/Resilience Officer	Interviews : ODPG PNUD Embassy of Canada
Friday 22 April	Interviews: Database manager Kore Lavi Departure for Gonaives	Interviews: Database manager Kore Lavi FAO Departure for Gonaives	WFP CO: National EPR/GFD Officer Departure for Gonaives
Saturday 23 April	Team work: documents review, identification of data gaps, discussion of agenda for week of 2 nd May		
Sunday 24 April	Documents review and preparation of agenda proposal	Departed for Cap Haitien	Departed for Cap Haitien
Monday 25 April	Gonaives/Artibonite Interviews: WFP sub-office: Senior programme assistant and three FAM Visits to sites/interviews:	Cap Haïtien/North Group meeting WFP Cap Haitian: All team except drivers (2 FAM, 2 Log)	
		Interviews: ODN	Interviews: WFP Office: 2 FAM & 2 Logistic staff

Day and Date	Mirella Mokbel Genequand Team leader (Focus: Nutrition)	Blanche Renaudin (Focus: food security assessment and CFA)	Robert Philippe (Focus: Relief, EPR and database)
	Pont Gaudin Health Center (MAM treatment): interview and consultation of registers and reports Three prevention distribution sites (Brunette, Terrasse and Pont Gaudin): interviews of staff involved in distribution; consultation of registers/beneficiary lists and beneficiary cards; and FGD with beneficiaries	WFP Office: 2 FAM DPC North East	SIKSE ASEBED
Tuesday 26 April	Anse-Rouge/Artibonite Departed for Bombardopolis with visit to Anse-Rouge on the way Visits to sites/interviews: Prevention distribution site at the Anse-Rouge town hall: interviews, FGD with beneficiaries and consultation of beneficiary lists and beneficiary cards Overnight: Môle Saint Nicolas	Caracole / Northeast Visits to sites/interviews: FGD with CFA beneficiaries Visit of 2 Assets Sites (soil excavated from rehabilitated waterways + waterbed rehabilitated) Trou du Nord / Northeast Interviews: Local religious leader Visits to sites/interviews: FGD with CFA beneficiaries Visit of 2 Assets Sites (riverbeds rehabilitated) Overnight : Cap Haïtien	Terrier-Rouge / Northeast Visit schools/Interviews: FGD with beneficiaries at <i>Ecole Nationale de Colonie</i> FGD with beneficiaries at <i>Ecole Notre-Dame de Grand-Bassin</i> Sainte Suzanne/ Northeast FGD with beneficiaries at <i>Ecole Nationale de Colette</i>
Wednesday 27 April	Bombardopolis/Northwest Visits to sites/interviews: <i>Hôpital Evangélique, Mont des Oliviers-Desmoulins</i> dispensary and <i>Bethel de Rochefort</i> dispensary (MAM treatment and prevention distribution sites): interviews of staff involved in distribution; interviews of health staff;	Departed for Gonaïves Gonaïves / Artibonite Interviews: WFP Sub-Office: Senior programme assistant and one FAM Departed for Môle Saint Nicolas Overnight: Môle Saint Nicolas	Mombin Crochu/ Northeast FGD with beneficiaries at <i>Ecole Communautaire de Mombin Crochu</i> FGD with beneficiaries at <i>Ecole Episcopale Nationale St Benoit</i> FGD with beneficiaries at <i>Ecole Notre Dame de La Délivrance</i> Ranquite/ Northeast

Day and Date	Mirella Mokbel Genequand Team leader (Focus: Nutrition)	Blanche Renaudin (Focus: food security assessment and CFA)	Robert Philippe (Focus: Relief, EPR and database)
	consultation of registers/beneficiary lists and beneficiary cards; and FGD with beneficiaries ACF sub-office Kore Lavi staff Overnight: Môle Saint Nicolas		FGD with beneficiaries at <i>Ecole Nationale de Ranquite</i> La Victoire/ Northeast FGD with beneficiaries at <i>Ecole Notre- Dame de La Victoire</i>
Thursday 28 April	Gonaïves/Artibonite Interviews WFP Sub-Office	Môle Saint Nicolas / Northwest Visits to sites/interviews: Visit of 2 Assets Sites (physical conservation of cultivated land) FGD with CFA beneficiaries Jean Rabel / Northwest Interviews: AAA Overnight: Môle Saint Nicolas	Departure for Hinche/ Centre Interviews: CARE Sub-Office Hinche Kore Lavi M&E Kore Lavi VLSA Supervisor
Friday 29 April	Gonaïves/Artibonite Interviews: WFP Sub-Office DSA Returned to Port-au-Prince	Bombardopolis / Northwest Visit to sites/interviews: FGD with CFA beneficiaries Visit of 2 Assets Sites (physical conservation of cultivated land) Local authorities Baie de Henne / Northwest Visit to sites/interviews: FGD: CFA beneficiaries Visit of 1 Assets Site (physical conservation of cultivated land) Departed for Gonaïve	Departure for Belladère /Centre FGD with beneficiaries at Ecole Nationale de Terre Blanche FGD with beneficiaries at Ecole National Ray-Sec de Belladère Returned to Port-au-Prince
Saturday 30 April		Gonaïves / Artibonite Interviews: WFP Sub-Office: Senior programme assistant + Head of Sub-Office Returned Port-au-Prince	
Port-au-Prince (Saturday 30 to Monday 9th)			

Day and Date	Mirella Mokbel Genequand Team leader (Focus: Nutrition)	Blanche Renaudin (Focus: food security assessment and CFA)	Robert Philippe (Focus: Relief, EPR and database)
Sunday 1st May	Interview Chief Programme Consolidation of interview notes		
Monday 2 nd May	Interviews: ACF WFP CO: finance, nutrition	Interviews: WFP CO: EPR / Resilience team, VAM, Kore Lavi Officers, School Feeding	Interviews: MICT/DPC WFP CO: Kore Lavi DCOP
Tuesday 3 rd May	Interviews: WFP CO: human resources, logistics, resource mobilization	Interviews: WFP CO: Gender, National EPR / Resilience Officer	Interviews: CARE: SO2 Coordinator & Electronic Coupon Expert MAST SI Staff MAST SI Programmer
Wednesday 4 May	Interviews: UNICEF WFP CO: M&E, Deputy CD	Interviews: MARNDR AAA WFP CO: Deputy CD	Interviews: WFP CO: National EPR/GFD Officer
Thursday 5 May	Hinche and Thomonde/Center Interviews: CARE team FGD with beneficiaries Thomonde	Thomazeau / West Visit to sites/interviews: FGD with CFA beneficiaries Visit of 1 Assets Site (physical conservation of cultivated land) Interviews : AJAD	Interviews: WFP CO: M&E Officer
Friday 6 May	TC RB and HQ Preparation of debriefing Power Point Presentation		WFP CO: M&E Officer
Saturday 7 May	Informal Debriefing (Head of Programme and Deputy CD)		
Sunday 8 May	Preparation/Finalization of debriefing Power Point presentation		
Monday 9 May	Internal and External debriefings		
Tuesday 10 May	Departed PAP	Departed PAP	

Annex 8: Overview of Kore Lavi Project

1. The overall goal of Kore Lavi is to reduce food insecurity and vulnerability by supporting the Government of Haiti in establishing a replicable safety net system and expanding capacities to prevent child undernutrition. More specifically, it aims to: develop a national vulnerability targeting system led by MAST; support key governmental institutions' capacities (mainly MAST); enhance food assistance through food vouchers supporting local production; and prevent and address malnutrition through a focus on the first 1,000 days. This four-year project funded by USAID (US\$80 million), which was awarded to CARE International in August 2013, is implemented by the Kore Lavi Consortium (CARE, ACF and WFP) under MAST oversight. Responsibilities among consortium members under the four Kore Lavi strategic objectives and ten immediate results (IR) are shown in the table below.

Allocation of Responsibilities among Kore Lavi Consortium Partners			
KL Results	CARE	ACF	WFP
KL SO1 National systems for vulnerability targeting strengthened			
IR 1.1 MAST-led equitable vulnerability targeting methodology developed, tested and implemented			Technical lead & implementation
KL SO2 Access of extremely vulnerable households to local and nutritious foods increased			
IR 2.1 MAST-led, gender-responsive, food voucher-based safety net model developed and implemented IR 2.2 Inclusion of local foods in the voucher-based safety net increased IR 2.3 Access to complementary services for safety net households Increased	Technical Lead of the Safety Net (Food Voucher)	Implementing partner	Not applicable (N/A)
KL SO3 Maternal and child nutritional status improved			
IR 3.1 Household practice of appropriate nutrition behaviours to prevent malnutrition increased IR 3.2 Capacity of community-based entities to promote appropriate nutrition practices to prevent malnutrition improved IR 3.3 Capacity of health facilities to deliver appropriate nutritional services strengthened	Implementation in Southeast & Centre	Technical lead & implementation in Northwest & Artibonite	Commodity management
KL SO4 Haitian institutions' capacity to effectively lead and manage safety net programming improved			
IR 4.1 Institutional capacity of various levels of government to lead, coordinate and implement safety net programs reinforced	N/A	N/A	Technical lead & implementation
SO4/IR 4.2 Capacity of civil society to monitor and support safety net programs reinforced	Implementation in Southeast & Centre	Implementation in Northwest & Artibonite	Technical lead
SO4/IR 4.3 Government capacity to respond to food emergencies expanded	N/A	N/A	Technical lead & implementation

Source: CARE-WFP Agreement Scope of Work

Map of selected communes

Legende

Priorité par Commune

- IA Elevée > 50 %
- IA Elevée 20 - 50 %
- IA Elevée 10 - 20 %

HAITI

Priorisation des communes selon la prévalence de l'Insécurité Alimentaire (IA) Elevée

Source: des données: 1997-2005, 2005

Annex 9: Additional Information on Context and Results

This annex presents: 1) additional context information: maps on hazards in Haiti and on the evolution of the food insecurity situation, and the evolution of food prices; 2) additional PRRO results (including photos); and 3) WFP's three-pronged approach to resilience.

Context

Figure 24: Haiti multi-hazard map, February 2014

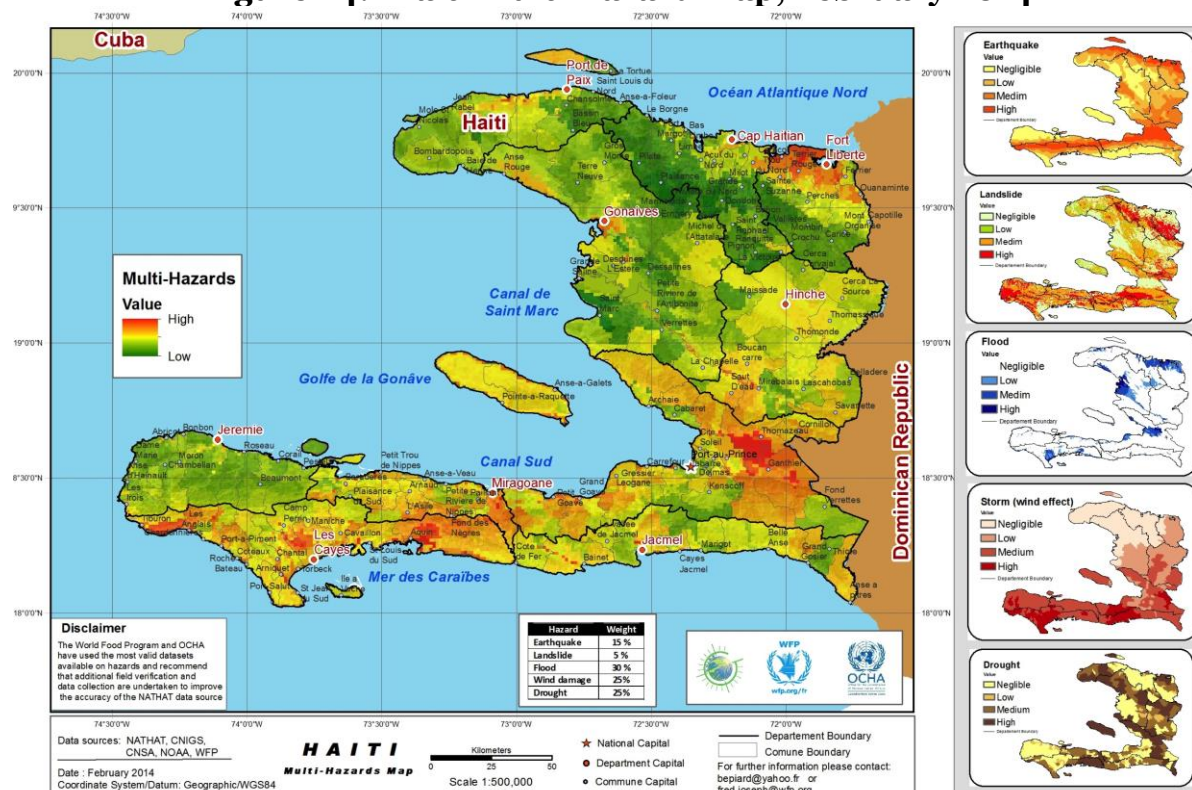


Figure 25: Acute Food Insecurity in Haiti – IPC – April 2014

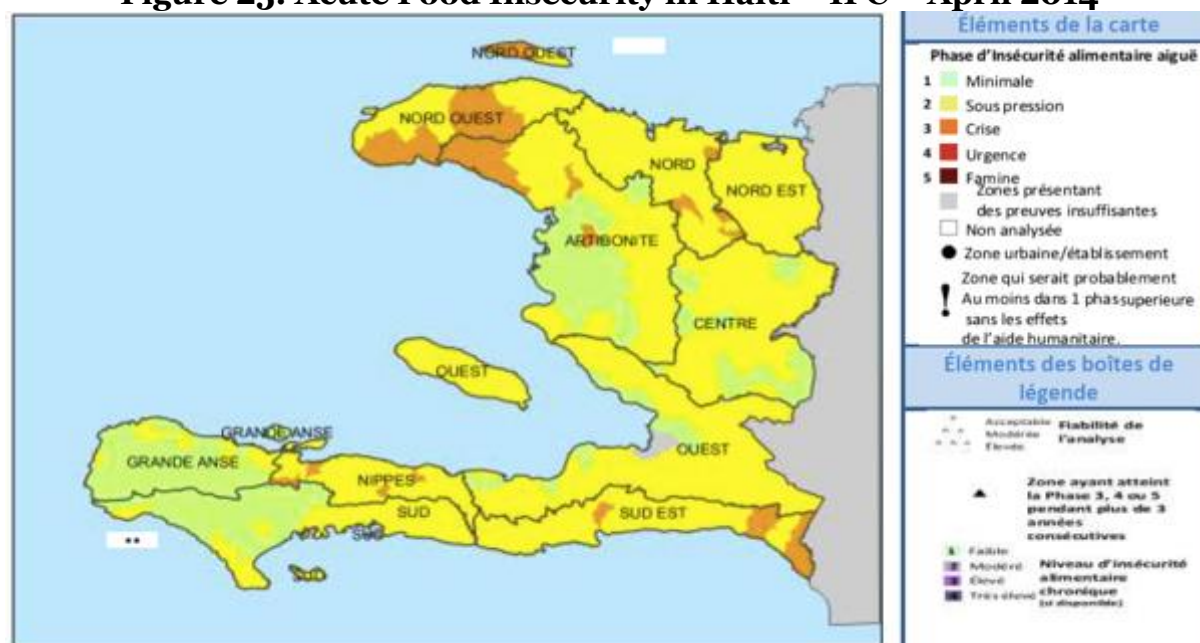


Figure 26: Chronic Food Insecurity in Haiti - IPC – October 2015

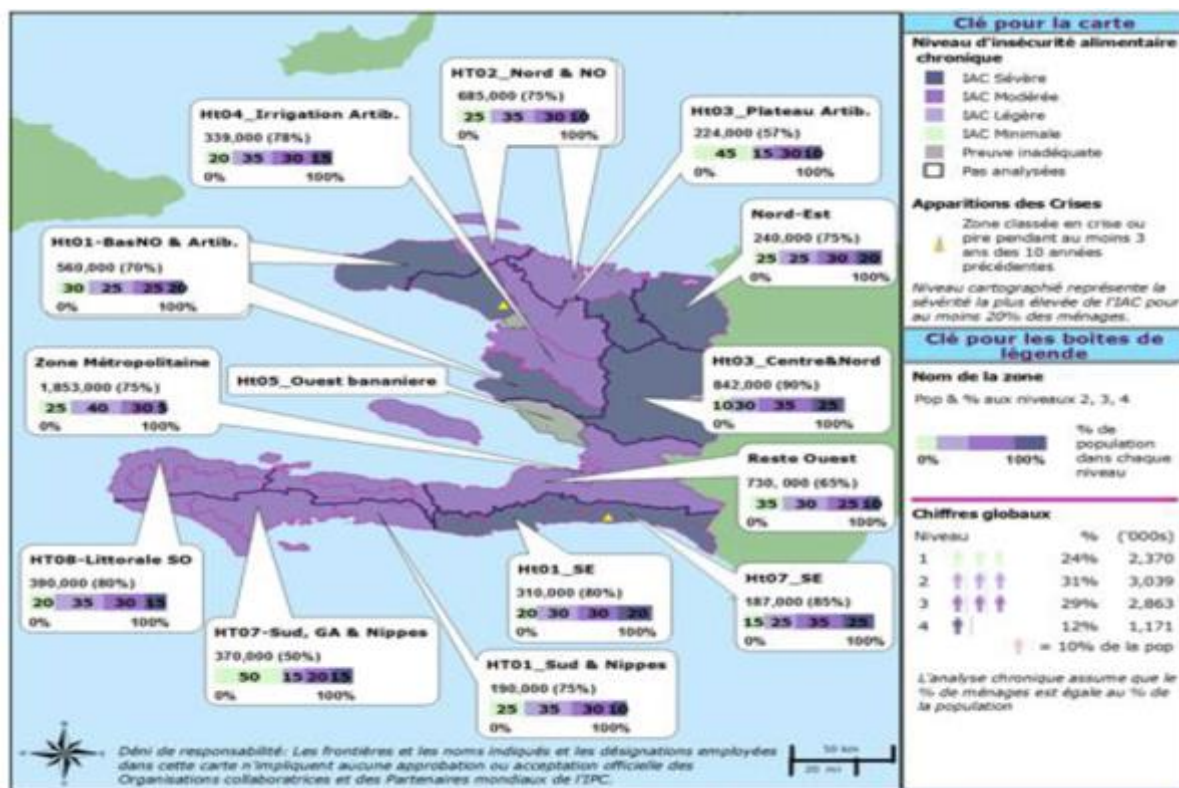
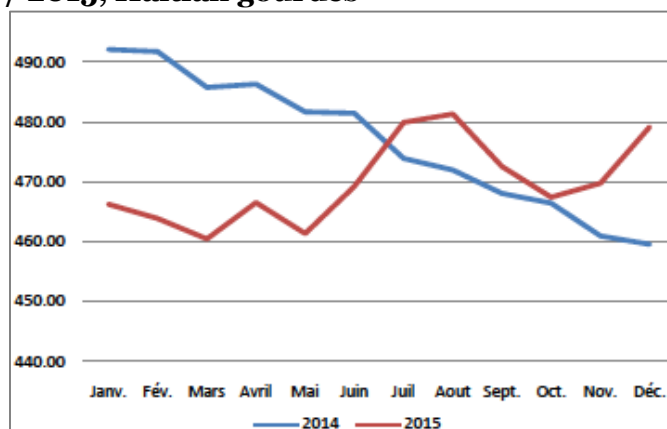


Figure 27: Food basket price evolution, 2014 / 2015, Haitian gourdes



Source: CNSA, MARNDR, EU, Swiss Cooperation, Banque Mondiale.
Food Basket and current conditions of Food Security. March 2014, April 2015, July 2015, October 2015, January 2016, April 2016

Results: Recovery and Resilience

Table 6: List of departments / communes targeted by CFA activities in 2014 / 2015

Implementing year	Departments	Communes	Partner
2014	North West	Baie de Henne, Bombardopolis, Jean Ravel, Môle Saint Nicolas	AAA
2015	West	Thomazeau	AJAD
2015	West	Arcahaie	SEJA
2015	West	Fonds-Verrettes	FOSAC
2015	West	Petit Goave	ODRG
2015	North East	Caracol, Trou du Nord	DPC North East
2015	Center	Hinche	Grasol
2015	West	Cornillon	FOSAC

Source: Data compiled by the CO following the evaluation mission

Table 7: Percentage of women enrolled as workers and as team leaders

	% of women workers	% of women team leaders
Caracole	46	30
Trou du Nord ¹	60	30
Môle Saint Nicolas	55	48
Bombardopolis	30	17
Baie de Henne	No data available	0
Thomazeau	No data available	No data available

Sources: Focus Group Discussions conducted by ET

Table 8: Number of people / institutions trained

Type of training	Date	Target	Actual Participants			
			Males	Females	Total	Institutions
Acute IPC – level 2	11 – 14 Nov 2014	GTT ² + Observatory members	15	2	17	Gov (10), UN (2), ONG (3), donors (2)
Chronic IPC-Data preparation & analyse	13 – 16 July 2015	GTT	15	1	16	Gov (5), UN (6), ONG (4), other (1)
Chronic IPC – level 1	31 August – 4 Sept 2015	GTT + Observatory members	26	2	28	Gov (15), UN (6), ONG (3), donor (1), others (3)
Chronic IPC – Classification session	12 – 14 Oct 2015		20	4	24	Gov (13), UN (5), ONG (2), donor (1), others (3)

Source: VAM, CNSA / WFP – Korelavi

¹ As there were so many people who took part at the focus group discussions, the number of women enrolled as workers or team leaders were based on estimation rather than exact numbers

² GTT : Technical Working Group

Table 9: Assets built – planned versus actual

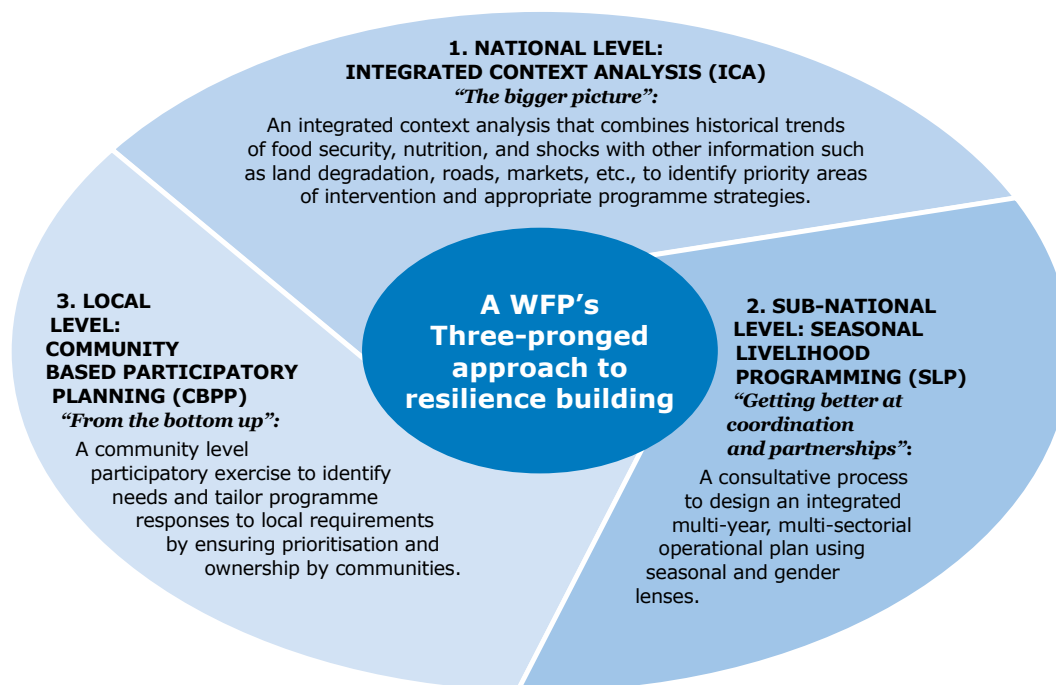
Assets planned versus Actual	Unit	Planned			Actual			Achieved		
		2014	2015	2016	2014	2015	2016	2014	2015	2016
Kilometres (km) of mountain trails rehabilitated	km	7			7			100%		
Number of tree seedlings produced	number	64 500			49 500			76,7%		
Volume (m3) of earth dams and flood protection dikes constructed	m3	71 850			91 342			127,1%		
Hectares (ha) of cultivated land treated and conserved with physical soil and water conservation measures only	ha		223			118			52,9%	
Hectares (ha) of cultivated land treated and biological stabilization or agro forestry techniques only (including multi-storey gardening, green fences, and various tree belts) with physical soil and water conservation measures only	ha		145			100			69%	
Hectares (ha) of degraded hillsides and marginal areas rehabilitated with physical and biological soil and water conservation measures, planted with trees and protected (e.g. closure, etc.)	ha		193			193			100%	
Hectares (ha) of forest planted and established	Ha		342			116			33,9%	
Volume (m3) of soil excavated from rehabilitated waterways and drainage lines (not including irrigation canals)	m3		49 049			35 074			71,5%	

Source: SPR 2014 / SPR 2015

Figure 28: Assets built in August 2015 in Trou du Nord



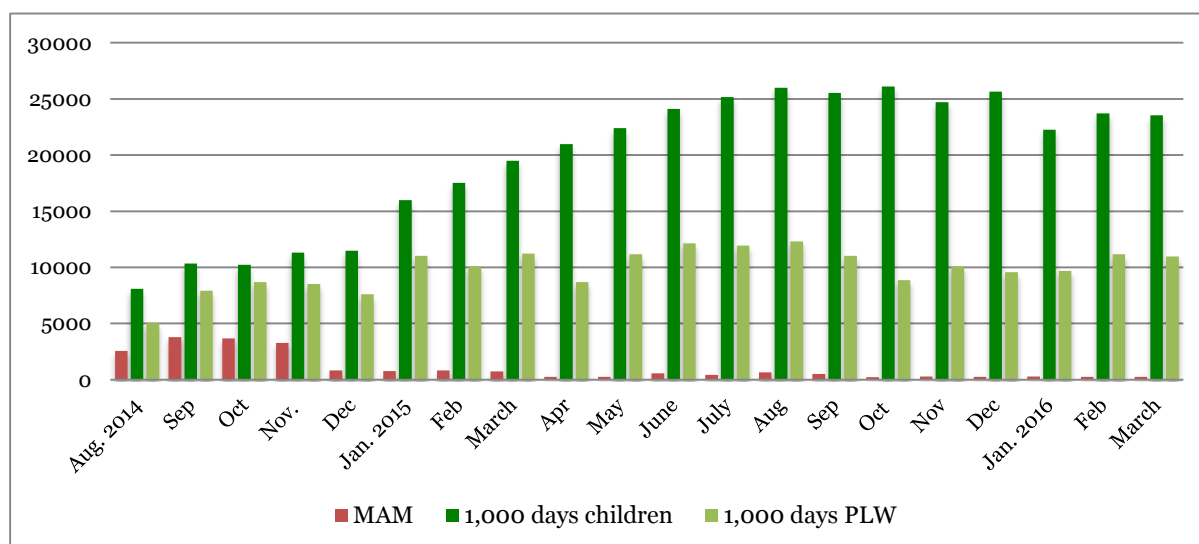
Figure 29: WFP's Three-Pronged Approach (3PA)



The approach strengthens the design, planning and implementation of longer-term resilience-building programmes, developed in partnership and aligned to national and local priorities. It places people and partners at the centre of planning, using converging analyses, consultations, and consensus building on actions required at three different levels. The three-pronged approach contains a number of new and innovative programming instruments and frameworks to strengthen the identification and delivery of programmes.

Results: Nutrition

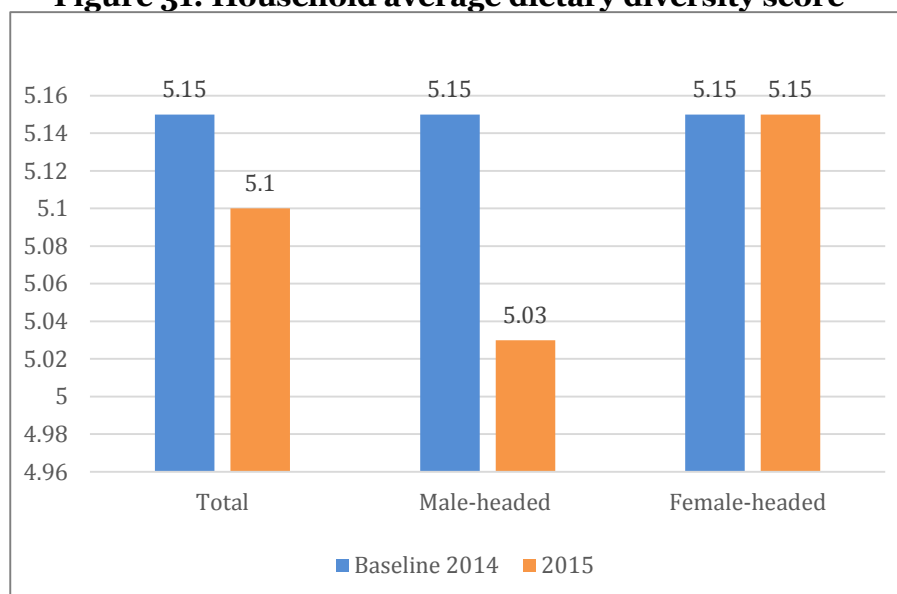
Figure 30: Nutrition treatment and prevention: monthly evolution of beneficiaries



Source: WFP Haiti CO Nutrition Unit Data (available as of August 2014)

Results: EPR

Figure 31: Household average dietary diversity score



Source: SPR 2015

Results: Targeting System for a National Social Safety Net

Table 10: Assessment of Level of Institutionalization - MAST Central

Assessment criteria		S01	S04	Average
HR	Staffing	2.5	3	2.8
	Participation	3	3	3.0
Procedures and standards	Procedures and standards - MAST	2	2.5	2.3
Management	Planning	1.5	3	2.3
	Coordination	2.5	3	2.8
	Monitoring and administration	2	2	2
Material resources		0.5		
Overall rating MAST Central				2.21

Source: WFP, 2016. Assessment of the level of institutionalization of the KL program at MAST. PWP presentation