



World Food Programme

wfp.org

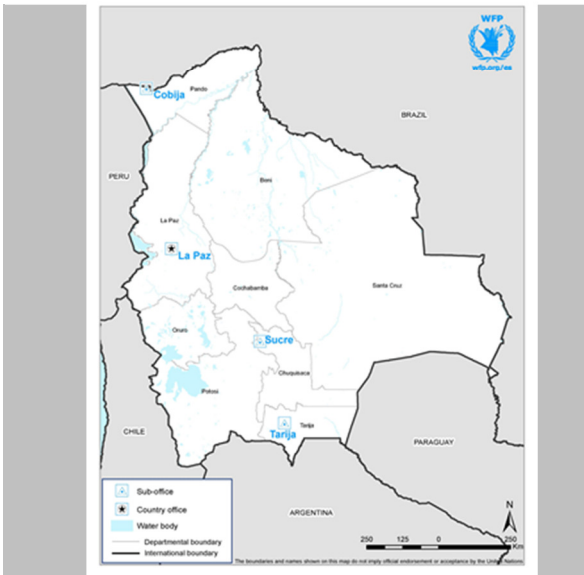
Country: Bolivia Floods update

Highlights

- The Government officially requested WFP to support flood-affected families in the northern Santa Cruz department.
- WFP has assessed the affected area and indicated that 15,000 people are in need of food assistance.

Situation Update

- On 21 August, the Minister of Rural Development and Land (MDRyT) officially requested WFP support approximately 33,000 flood-affected people in 8 municipalities of the department of Santa Cruz.
- On 24-27 August, WFP carried out an initial emergency assessment. The mission was joined by the MDRyT and the Vice Ministry of Civil Defence (VIDECI). Affected families and authorities identified food as one of the main needs.
- Findings of the assessment indicate that 15,000 people are in need of food assistance in the five most affected municipalities: San Julián, Minero, San Pedro, Fernandez Alonso and Santa Rosa del Sara.
- Floods destroyed 60,000 hectares of crops, 402 houses and a large number of roads and bridges leaving more than 33,000 people isolated.
- Landless casual workers and subsistence farmers were most affected. Floods destroyed crops and access to agricultural lands, the only source of livelihood. In addition, rice from the previous harvest stored in the fields was also destroyed by the floods. As farmers lost their crops, labour opportunities for landless casual workers are limited.
- Food reserves of flood-affected subsistence farmers are at very low levels. Casual workers have no food stocks left at household level.
- In response to the shock, households are resorting to negative coping strategies, such as reducing the number and size of meals, relying on less preferred and less expensive foods, reducing food consumption of adults/mothers for young children to eat.
- The shock has critically affected household food reserves for casual laborers and will impair subsistence farmers capacity to plant for the next season.



Bolivia IR-EMOP 200902

In numbers

33,000 people affected

8 Municipalities affected

15,000 people in need of food assistance

Logistics Cluster

WFP Response

- After the assessment, WFP prepared an immediate response emergency operation (IR-EMOP) to support 15,000 people in urgent need of food. The project will provide support until early December 2015 when subsistence farmers resume food production and demand for casual labour will recommence.
- The three-month project will start on 10 September. Prior to approval, it is currently being reviewed by the Regional Bureau in Panama.

Food Assistance



- Since the two main markets in the affected area have been assessed in the past, WFP will provide cash transfers in form of general distribution and cash for assets activities.

Clusters

Logistics Cluster



- The logistics cluster has been recently reactivated. The cluster is assessing the situation of the recent floods and coordinating preparedness actions for the next strong El Niño phenomenon during the end of 2015 and beginning of 2016.

Partnerships

- At national level, the operation will be coordinated in collaboration with the Ministry of Rural Development and Land (MDRyT) and the Vice Ministry of Civil Defence (VIDECI). Local governments of the affected municipalities, WFP's main implementing partners, have already committed to support the operation with technical assistance, construction materials, equipment and monitoring staff.

Resourcing Update

- The Government request and the findings of the assessment require immediate action and, therefore, WFP Bolivia will initially request support from the Immediate Response Account (IRA). WFP will contact donors locally to explore funding opportunities to reimburse the IRA.

Contacts

1. Paolo Mattei, WFP Bolivia Country Director
Paolo.Mattei@wfp.org
Mobile phone: 591-72007545
2. Marina Garcia Real, WFP Bolivia Deputy Country Director
Marina.Garciareal@wfp.org
Mobile phone: 591-71270796
3. Sergio Alves, Programme Officer, Emergencies
Sergio.Alves@wfp.org
Mobile phone: 591-70130266