

FOOD SECURITY and MARKET MONITORING REPORT

Issue nr. 30

November 2011-April 2012

oPt

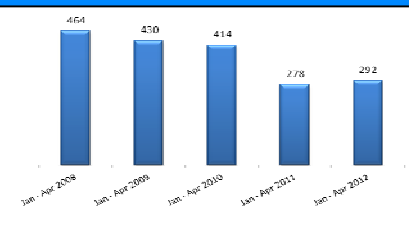
occupied Palestinian territory

FISHING CATCH³

Comparing first quarter in 2012 and 2011 the total fishing catch was reduced by 64% (from 179 mt to 64 mt). This huge reduction can be explained by the fact that the Israeli navy has recently become more aggressive in enforcing the 3 nM (or even less) fishing limit.

Over a one year period (April 2011/2012), the fishing catch was increased by 1% (from 99 mt to 100 mt). As is noticed from below graph that the total fishing catch is reduced in the first four months in 2012 by 37% compared into same period in 2008.

Graph 2: Fishing catch in the Gaza Strip

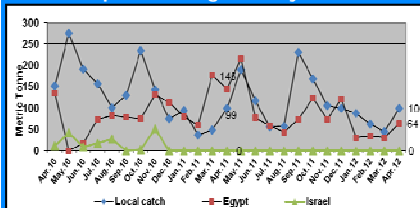


The sources (origin) of the fish sold on the Gaza market have also seen some changes between the first quarters of 2011 and 2012.

Local catch was reduced in first quarter 2012 by 64% while the quantities of fish acquired via Rafah Egyptian side were reduced by 90% (from 317 mt to 31 mt) comparing into same quarter of last year.

Fish is no longer imported from Israel since December 2010 and the local market therefore relies solely on the local catch and imports from Egypt.

Graph 3: Fishing catch by source



1. PRICE TRENDS & AVAILABILITY IN THE WEST BANK AND GAZA STRIP¹

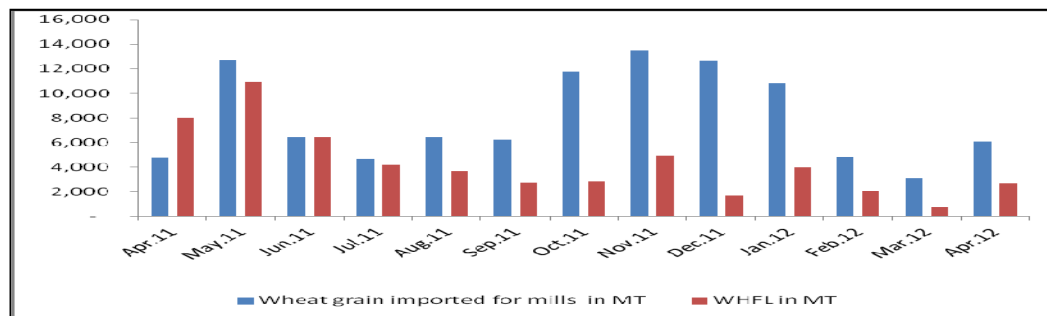
Wheat Flour

The quantities of wheat grain imported through the Kerem Shalom crossing during the first quarter of 2012 (18,798 mt) decreased by 45 percent compared to the first quarter of 2011 (34,306 mt). This reduction was due to the large quantities smuggled through the tunnels from Egypt which is cheaper than what is available in the market (Egyptian wheat sold at black market, mainly to bakeries, at 80-85NIS/50kg bag compared to 95-100NIS /50kg bag).

Since June 2011, wheat flour has been available in sufficient quantities in the local market, combined with the renewed competition between flour traders, the local prices for wheat flour decreased from 105-110 NIS/50 kg in April 2011 compared to 95-100 NIS per 50 kg flour bag in April 2012.

Most of the bakeries in the Gaza Strip are operating on solar and electricity, which is due to the shortage of solar in Gaza market. However, an agreement between the Bakeries Association, the MoNE and the Petroleum & Gas station owners Association, to resume providing all of the 60 Bakeries with 500 liter of solar per week, depending on production quantity of each bakery.

Graph 1: Total wheat grain and flour imported in the Gaza Strip (mt) from April 2011 to April 2012²



Meat

In the Gaza Strip, the consumer price index for fresh meat decreased by 5 percent between the fourth quarter of 2011 and first quarter of 2012. In April 2012, the consumer price index for fresh meat decreased by 6% compared to April 2011. Fresh beef has increased by 0.9 percent from March to April 2012 (from 45.3 to 45.8 NIS/kg). The April 2012 price level for fresh goat meat was higher than March 2012 price (increased from 53 to 55 NIS/kg), and decreased compared to April 2011 by 1.1 percent (it was NIS 56.1/kg).

1: World Food Programme (WFP) & Palestinian Central Bureau of Statistics (PCBS)
 2: Ministry of National Economy (Gaza Strip)
 3: WFP

SOURCES OF ENERGY

Cooking Gas⁴

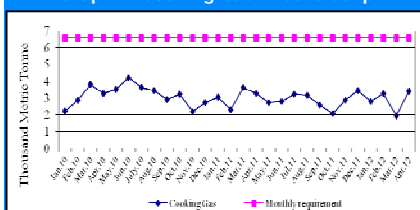
During the first quarter of 2012, the cooking gas import levels decreased by 5 percent compared into fourth quarter of 2011 but it did not meet the monthly requirements (from 8,412 to 7,969 mt).

According to Gaza Station Owners Association, due to the shortage, cooking gas is being rationed among the 28 gas stations in Gaza, with almost all of them reported either closed or operating for only a few hours during the week. They need at least 200 tons to enter daily for the next Two weeks to cover the deficit from the previous month.

Electricity⁵

A shortage of fuel continue disrupting daily life in Gaza, an increasing amounts of fuel entered through the tunnels under the Gaza Egypt border during April in response to the fuel crisis that took place during the last three months , approximately 1,639,050 liters of benzene

Graph 4: Cooking Gas in Gaza Strip



and 4,019,450 liters of diesel in addition to 3,857,990 liters of benzene (super). Reportedly entered Gaza through tunnels and were distributed to local Gas stations .Palestinian and Egyptian officials are holding meetings in Cairo to resolve the fuel and electricity crisis. A deal announced Tuesday April 3rd between Gaza and Ramallah to end the power crisis in Gaza, PA spokesman said daily deliveries of fuel would continue as long as the Gaza power authority continued to send payment. This deal allows Hamas to buy fuel from Israel through PA intermediaries, will ease the power crisis which has plagued the Gaza strip since February.

Electricity demand in Gaza can reach up to 360 megawatts (MW). At its current operating capacity, the Gaza Power Plant (GPP) can produce up to 80 MW; supplemented by 120 MW purchased from Israel and 22 MW from Egypt, the total amount of electricity available can meet approximately two-thirds of the demand.

Due to a severe fuel shortage, since February 2012, the GPP has either been operating at one-third of its operational capacity or has had to shut down, as a result of the lack of fuel .Triggering scheduled blackouts of 6-18 hours a day, in addition to random unscheduled cuts.

Meat (cont.)

The decrease meat prices was due to the high competition between butchers, and also due to the large number of cattle that is available in Gaza. Cattle imported for slaughtering is now coming from official crossing (Israel, the Netherland and Belgium). In total, 39,585 cattle have entered into Gaza since July 2010, where the daily requirement of cattle in Gaza Strip is 260 cattle (MoNE, 2008). The de-facto government stopped allowing the Cattle to be smuggled through tunnels in April 2012 due to the spread of the foot and mouth disease at one of the farms in Rafah area

Table1: The imported cattle through legal crossing in Gaza Strip from July 2010-2012

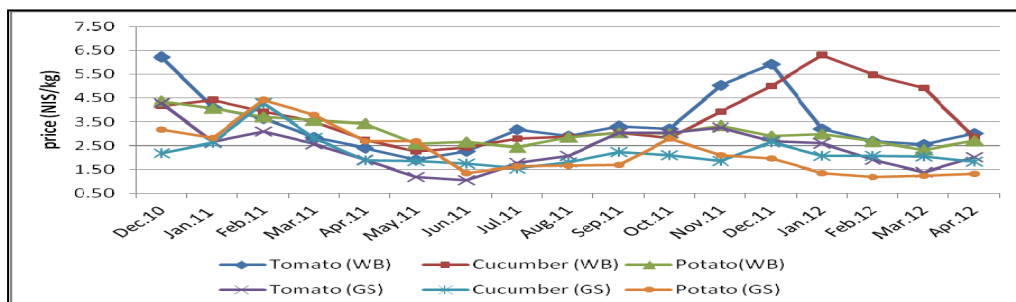
Year	Jan	Feb	Mar	Apr	May	Jun	Jul	Aug	Sep	Oct	Nov	Dec	Total
2010	-	-	-	-	-	-	4,142	3,572	1,889	2,522	444	1,542	14,111
2011	1,403	2,070	757	625	223	356	347	3,292	3,855	2,048	660	1,216	16,852
2012	2,007	3,788	2,169	658									5,795

In the West Bank, the consumer price index for fresh meat decreased by 2 percent between the fourth quarter 2011 and first quarter of 2012. In April 2012, the consumer price index for fresh meat increased by 2 percent compared to April 2011. The prices for fresh beef and goat meat have reached 52 NIS/kg and 70.9 NIS/kg respectively in April 2012, a bit different than March 2012 (increased by 0.27 percent and decreased by 1.03 percent, respectively). The price for chicken has now reached 14.5 NIS/kg, which has decreased by 2.3 percent compared to March 2012, and decreased by 2 percent compared to April 2011 (14.8 NIS/kg). Comparing April 2011 to April 2012, the fresh goat meat prices increased by 4 percent while fresh beef meat decreased by 1 percent.

Vegetables

During the past year, the overall vegetable prices have witnessed a decrease in the oPt. In the Gaza Strip, the quarterly consumer price index for fresh vegetables decreased by 12 percent between first quarter of 2011 and 2012. In April 2012, the consumer price index for fresh vegetables decreased by 1 percent compared to April 2011. During that period, cucumber price decreased by 3 percent , tomato price increased by 6 percent, and the potato price decreased by 51 percent (from 2.7 to 1.3 NIS/kg) as a result of a good harvest season.

In the West Bank, the quarterly consumer price index for fresh vegetables increased by 4 percent between first quarter of 2011 and 2012. In April 2012, the consumer price index for fresh vegetables increased by 13 percent compared to April 2011. Tomato and cucumber prices increased by 26 and 4 percent respectively, while the potato price decreased by 21 percent comparing April 2011 and April 2012.



4. WFP

5. WFP

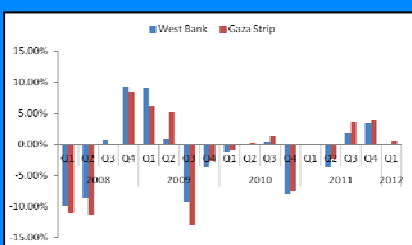
SOCIO-ECONOMIC INDICATORS⁷

Inflation rate

The inflation rate in the West Bank increased by 0.12 percent in April 2012 compared into March 2012, while decreased by 0.03 percent in Gaza Strip for same period.

In the first quarter of 2012, the purchasing power is worsen in both the West Bank and the Gaza Strip in comparison to the previous quarter. This is the result of an increasing quarterly exchange rate during this period (by 1.3 percent) combined with an increasing quarterly Consumer Price Index (CPI) in the West Bank (by 1.2 percent) and a increasing CPI in the Gaza Strip (by 0.8 percent).

Graph 6: Percentage change in purchasing power in WB & GS from Q1 2008 to the Q1 2012

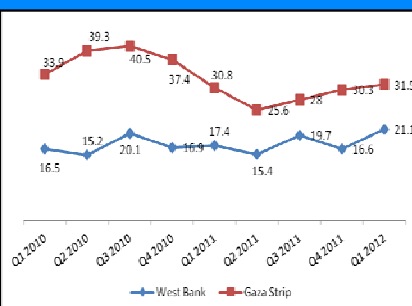


Unemployment

In the first quarter of 2012, 21.1 percent of the West Bank labor force was unemployed (ILO def.). Over a one year period, the unemployment rate has increased by 21% (from 17.4% to 21.1%).

In the Gaza Strip, 31.5 percent of the labor force was unemployed during the first quarter of 2012. Since the first quarter of 2011, unemployment increased by 2.3 percent (from 30.8 percent to 31.5 percent).

Graph 7: Unemployment rate (ILO def.)



Poverty

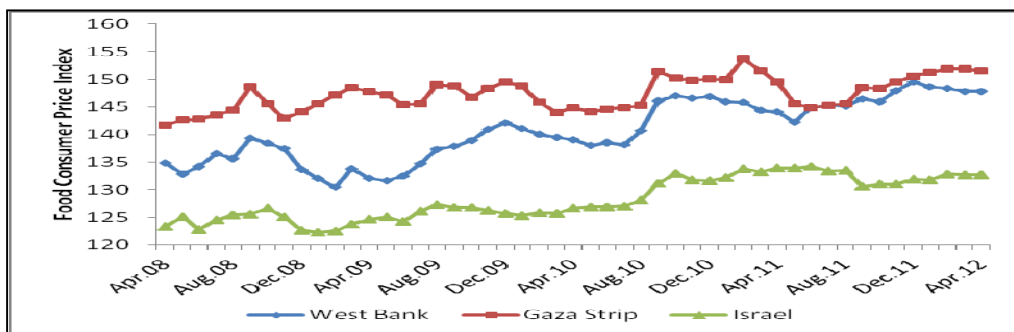
In 2010, the poverty and deep poverty lines for the reference households (2 adults and 3 children) stood at NIS 2,237 and NIS 1,783, respectively.

2. COMPARING PRICES

West Bank / Gaza Strip Prices⁶

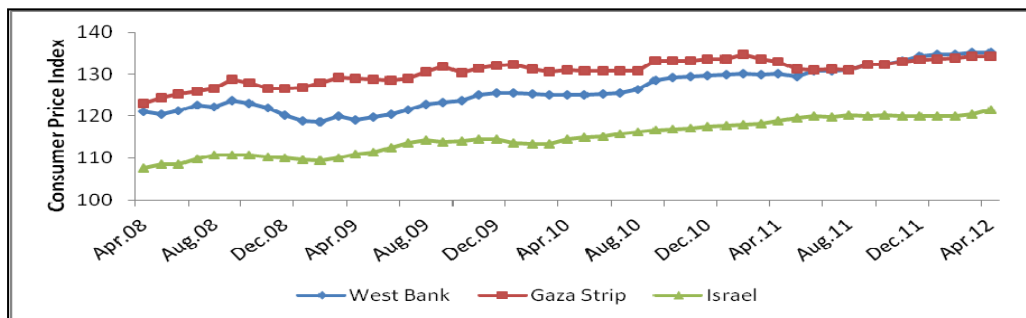
The food consumer price index (FCPI) increased in both West Bank and Gaza Strip by 2.6 percent and 1.4 percent between April 2011 and April 2012 respectively, while decreased in Israel by 0.86 percent over the same period. The food consumer price index increased by 35.5 percent, 35.3 percent and 21.6 percent in Gaza Strip, West Bank and Israel, respectively over the last 5 years.

Graph 5: Food Consumer Price Index (FCPI) in West Bank, Gaza Strip and Israel from Apr.08 to Apr.12 (base year 2004)



As shown in the graph below, the overall Consumer Price Index (CPI) increased by 4 percent between April 2011 and April 2012 in the West Bank, increased by 2.1 percent in Israel and by 1 percent in the Gaza Strip during the same period. Between April 2007 and 2012, the CPI increased in all regions (West Bank, Gaza Strip and Israel) by 26.4, 26.3 and 18.1 percent, respectively.

Graph 8: Comparing the CPI for West Bank, Gaza Strip and Israel from Apr.08 to Apr.12 (base year 2004)



While the food CPI and the CPI increased between 23 and 35 percent between first quarter of 2007 and first quarter of 2012, the real average daily wage decreased by 10 percent in the West Bank and by 24 percent in Gaza Strip for the same period.

6. PCBS & Bank of Israel

7. PCBS

SOCIO-ECONOMIC INDICATORS (continued)

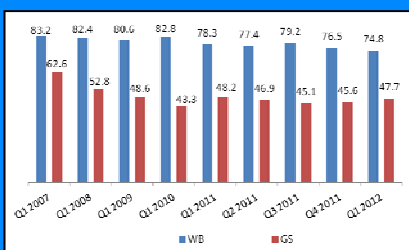
Daily wage

The average real daily wage in the Gaza Strip was NIS 47.7 in first quarter 2012. Over a one year period, it decreased by 1 percent (48.2 NIS).

Compared to before the blockade (second quarter 2007), the real daily wage decreased by nearly 20 percent (from NIS 60 to NIS 47.7).

In the West Bank the average real daily wage was NIS 74.8 in first quarter 2012. It decreased by 4.5 percent compared to first quarter 2011 (NIS 78.3). Comparing second quarter 2007, the real daily wage in the West Bank decreased by 9 percent (it was 82 NIS).

Graph 11: Real average daily wage (NIS) in West Bank and Gaza Strip



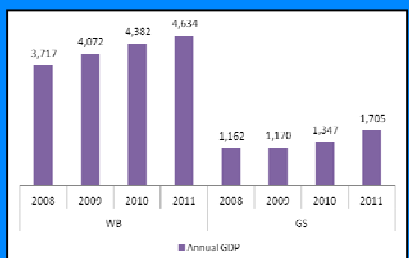
Gross Domestic product (GDP) at constant price

As is noticed from below graph, the GDP at constant price increased in both region, West Bank and Gaza Strip.

In West Bank, real GDP increased in 2011 by 5.8 percent compared into 2010 (from 4,382 million \$ to 4,634 million \$).

IN Gaza Strip, real GDP increased in 2011 by 27 percent compared into 2010 (from 1,347 million \$ to 1,705 million \$)

Graph 12: Gross Domestic Product in WB and GS in constant price (base year 2004)



3. GAZA STRIP IMPORT - EXPORT⁸

On average, 48% of the total imports is coming from Israel, then 13% from West Bank during the period from November 2011 till April 2012. The total truckloads entering the Gaza Strip in April 2012 was 2,787 truckloads compared to 2,740 truckloads in March 2012. As noticed from the below table, there are a little improvement in the total imported truckloads entering Gaza Strip in April 2012 comparing to March 2012 except from Turkey (deceased from 131 to 84 truck loads).

Table : Total imports truckloads of commodities by origin

Country Name	Nov.11	Dec.11	Jan.12	Feb.12	Mar.12	Apr.12
West Bank	340	378	407	363	461	466
Israel	1,603	1,559	1,537	1,491	1,346	1,359
Turkey	109	96	146	77	131	84
China	432	330	398	420	244	252
Arab countries	224	153	235	135	136	145
European countries	595	505	371	230	229	261
Others	253	236	340	204	193	220
Total	3,556	3,287	3,434	2,920	2,740	2,787

The export of cash crops for 2011-2012 seasons has started on Nov 27th, 2011 through Kerem Shalom crossing point. As noticed from the below table, in April 2012 only the total exports crop was cut flowers (2,470,000 stems), which decreased by 7 percent compared to March 2012. While it recorded as increments compared to April 2011 (493,200 stems).

Total Exports in period from December 2011 till April 2012

Cash Crops	Dec.11	Jan.12	Feb.12	Mar.12	Apr.12
Strawberries/ton	266	173	3	0	0
Cut flower/stems	177,040	1,205,550	2,469,300	2,651,000	2,470,000
Sweet pepper/ton	29	12	3.4	0	0
Cherry tomatoes/ton	4	39	90	61	0

7. ANNEX⁹

Figure A1: Dairy products and eggs index and Food CPI in WB & GS

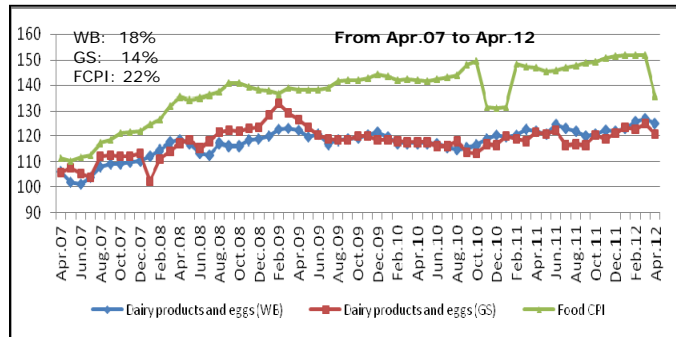


Figure A2: Cereal and its products index and Food CPI in WB & GS

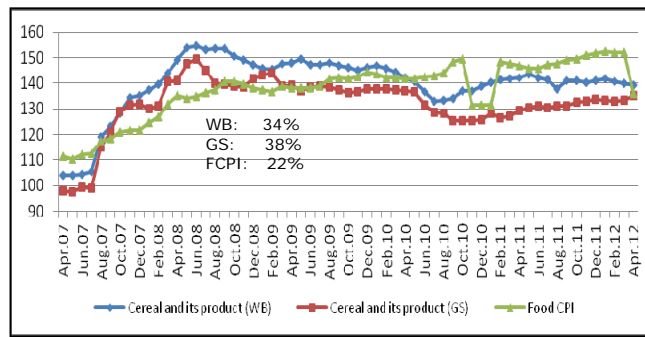


Figure A3: Fresh meat index and Food CPI in WB and GS

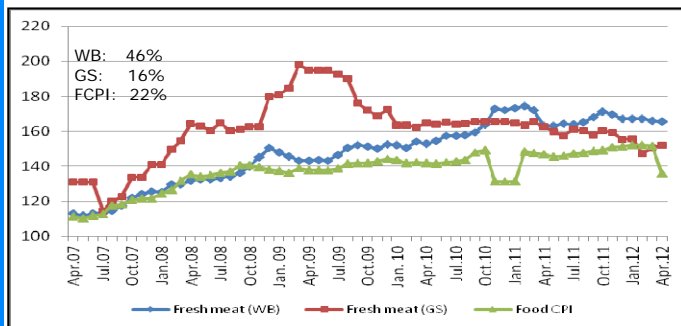


Figure A4: Sugar index and Food CPI in WB and GS

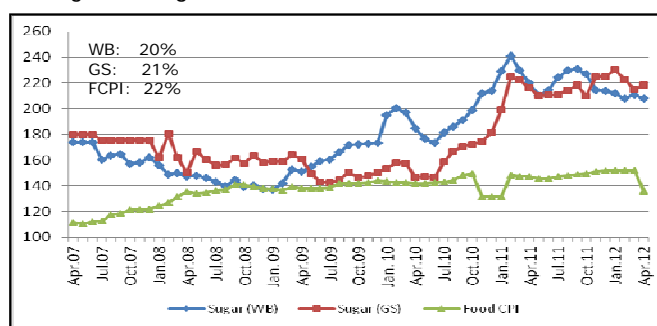


Figure A5: Oils and Fats index and Food CPI in WB and GS

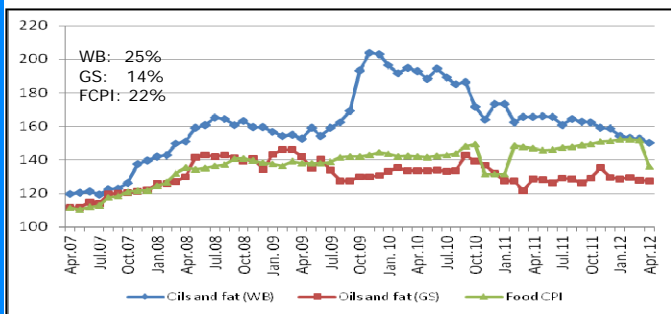


Figure A6: Fruits index and Food CPI in WB and GS

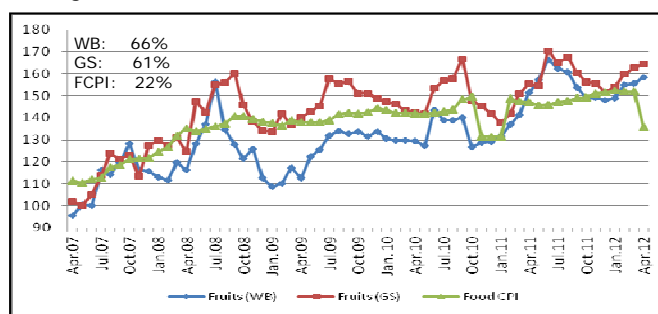


Figure A7: Vegetables index and Food CPI in WB and GS

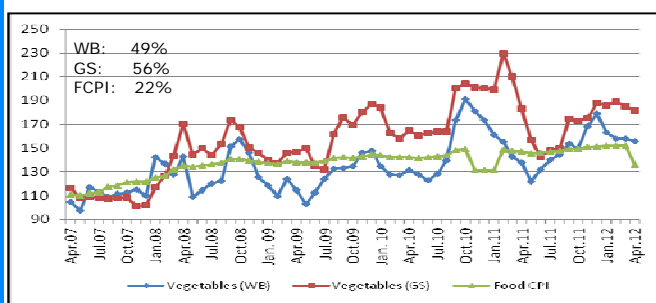


Figure A8: Meat¹⁰ index and Food CPI in WB and GS

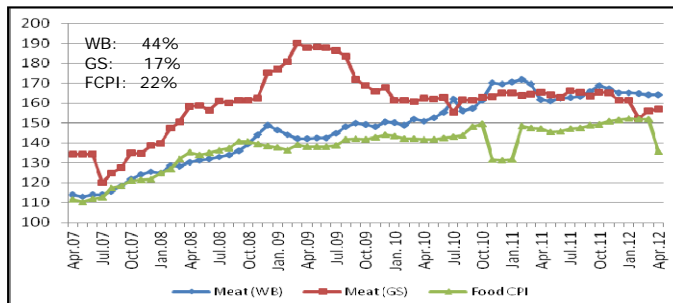
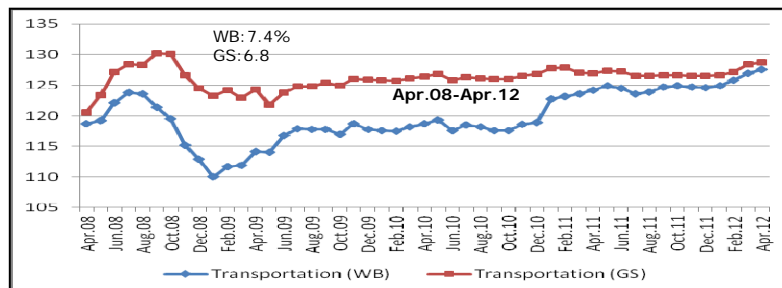


Figure A7: Transportation index in WB and GS



9. PCBS. The percentage change = Total change from Apr.07 until Apr.12 for Food Index and from Apr.08 to Apr.12 for Transportation Index

10. Meat includes fresh & frozen

Table A1: Magnitude of quarterly price changes & contribution to the cost of the food basket, by regions & commodities

Food items	Region	% Caloric Contribution ¹¹	Current price	% Change from last month	Monthly change from last year (% change)	Monthly change from last 3-month (% change)	Change from last quarter (% change)	Quarterly change from last year (% change)	Quarterly change from last 5-year (% change)	Contribution to the cost of the food basket (%)		Price trend
			Apr.12	Apr.12-Mar.12	Apr.11-Apr.12	Jan.12-Apr.12	Q1 2012 - Q4 2011	Q1 2012-Q1 2011	Q1 2011-Q1 2005	Cumulative impact of the quarter	Cumulative impact from 5 years average	
Staple Food												
Short grain profiled rice	West Bank	12%	110.4	-3.6%	-6.5%	-6.3%	0.7%	-2.7%	18.5%	0.09%	2.22%	▶
	Gaza Strip	12%	130.0	1.2%	-14.3%	-3.7%	0.0%	-14.9%	51.5%	0.00%	6.18%	▶
Haifa white flour	West Bank	36%	151.3	0.3%	-10.7%	-3.2%	-3.0%	-7.9%	170.1%	-1.07%	61.25%	▶
	Gaza Strip	36%	146.7	0.0%	0.0%	0.0%	0.0%	0.0%	36.9%	0.00%	13.29%	▶
White bread	West Bank	36%	4.0	0.0%	0.0%	0.0%	0.0%	0.0%	-81.9%	0.00%	-29.47%	▶
	Gaza Strip	36%	2.9	0.0%	0.9%	2.0%	0.0%	0.5%	42.4%	0.00%	15.28%	▶
Olive oil	West Bank	NA	25.3	-2.3%	-14.5%	-3.7%	-6.9%	-13.7%	56.7%	NA	NA	▶
	Gaza Strip	NA	29.0	0.6%	-3.3%	-1.7%	0.0%	-0.2%	48.0%	NA	NA	▶
Corn oil	West Bank	5.0%	26.9	1%	3.5%	1.6%	2.5%	6.2%	0.0%	0.12%	0.0%	▶
	Gaza Strip	5.0%	27.0	-2.4%	5.9%	0.0%	0.0%	-29.7%	0.0%	0.00%	0.0%	▶
Lentils	West Bank	NA	7.6	3.2%	-6.4%	7.9%	-0.7%	-8.4%	49.3%	NA	NA	▶
	Gaza Strip	NA	8.0	0.0%	0.0%	0.0%	0.0%	4.3%	166.7%	NA	NA	▶
Chick beans	West Bank	NA	7.5	7.3%	-6.1%	1.6%	-5.6%	-10.3%	83.2%	NA	NA	▶
	Gaza Strip	NA	6.3	0.0%	-5.0%	0.0%	0.0%	-8.1%	25.6%	NA	NA	▶
Fine white sugar	West Bank	NA	4.7	-2.0%	-4.5%	-3.2%	-2.1%	-7.1%	-17.8%	NA	NA	▶
	Gaza Strip	NA	4.5	0.0%	-5.3%	-10.0%	-3.0%	1.2%	93.2%	NA	NA	▶
White table salt	West Bank	NA	1.8	-1.6%	0.6%	-3.9%	3.8%	9.9%	-90.9%	NA	NA	▶
	Gaza Strip	NA	1.0	0.0%	0.0%	0.0%	5.6%	-2.7%	-8.9%	NA	NA	▶
Animal Products												
Chicken eggs	West Bank	1.0%	16.5	-4.2%	5.1%	7.4%	10.1%	7.0%	14.2%	0.10%	0.14%	▲
	Gaza Strip	1.0%	15.3	-5.7%	-1.6%	-1.6%	0.0%	8.9%	39.7%	0.00%	0.40%	▶
Fresh goat meat with bones	West Bank	NA	70.9	-1.0%	4.4%	-1.8%	-0.5%	-1.9%	95.1%	NA	NA	▶
	Gaza Strip	NA	55.0	3.1%	-2.0%	50.0%	0.0%	-19.6%	3.1%	NA	NA	▶
Fresh beef meat	West Bank	NA	52.0	0.3%	-0.6%	-0.5%	-2.4%	-5.0%	147.2%	NA	NA	▶
	Gaza Strip	NA	45.8	0.9%	-7.3%	-2.7%	0.0%	-8.0%	48.4%	NA	NA	▶
Fresh chicken without feathers	West Bank	NA	14.5	-2.3%	-2.0%	-6.7%	13.3%	12.2%	-27.0%	NA	NA	▲
	Gaza Strip	NA	13.9	-4.4%	7.3%	-3.8%	0.0%	21.1%	94.3%	NA	NA	▶
Fresh red snapper	West Bank	NA	14.3	-1.9%	-6.7%	-2.7%	-0.8%	-4.5%	-37.4%	NA	NA	▶
	Gaza Strip	NA	12.5	-1.3%	-37.5%	-3.8%	0.0%	-40.8%	-48.7%	NA	NA	▶
Frozen fish	West Bank	NA	31.0	-1.1%	44.2%	0.9%	8.6%	37.1%	213.6%	NA	NA	▶
	Gaza Strip	NA	25.0	0.0%	56.3%	0.0%	0.0%	88.3%	150.0%	NA	NA	▶
Diary Products												
Pasteurized milk 3% fat	West Bank	NA	6.9	0.9%	5.7%	-0.4%	-0.9%	6.4%	-84.3%	NA	NA	▶
	Gaza Strip	NA	8.0	0.0%	4.3%	2.1%	0.0%	3.2%	49.0%	NA	NA	▶
Powdered milk	West Bank	NA	100.2	4.3%	3.5%	4.3%	-0.8%	-0.2%	89.9%	NA	NA	▶
	Gaza Strip	NA	91.5	0.0%	0.3%	1.7%	0.0%	-1.8%	7.2%	NA	NA	▶
Powdered milk kikoz (No.1)	West Bank	NA	34.0	0.1%	9.3%	4.7%	2.3%	22.1%	190.2%	NA	NA	▶
	Gaza Strip	NA	29.3	-2.8%	25.7%	-0.6%	0.0%	40.5%	58.9%	NA	NA	▶
Yogurt	West Bank	NA	4.1	2.1%	-10.5%	2.6%	-3.5%	-1.2%	-20.0%	NA	NA	▶
	Gaza Strip	NA	7.0	0.0%	0.0%	0.0%	0.0%	0.0%	40.0%	NA	NA	▶
Labaneh	West Bank	NA	8.0	0.0%	3.1%	1.8%	0.7%	4.6%	17.6%	NA	NA	▶
	Gaza Strip	NA	8.3	-4.1%	-2.1%	-9.6%	0.0%	5.7%	18.3%	NA	NA	▶
White boiled goat cheese	West Bank	NA	24.2	-7.9%	0.0%	-4.1%	0.2%	0.0%	0.0%	NA	NA	▶
	Gaza Strip	NA	22.3	-10.7%	-10.7%	-10.7%	0.0%	0.0%	0.0%	NA	NA	▶

Table A1 (Cont): Magnitude of quarterly price changes & contribution to the cost of the food basket, by regions & commodities

Food items	Region	% Caloric Contribution	Current price	% Change from last month	Monthly change from last year (% change)	Monthly change from last 3-month (% change)	Change from last quarter (% change)	Quarterly change from last year (% change)	Quarterly change from last 5-year (% change)	Contribution to the cost of the food basket (%)		Price trend
			Apr.12	Apr.12-Mar.12	Apr.11-Apr.12	Jan.12-Apr.12	Q1 2012 - Q4 2011	Q1 2012-Q1 2011	Q1 2011-Q1 2005	Cumulative impact of the quarter	Cumulative impact from 5 years average	
Vegetables & Fruits												
Big size orange	West Bank	NA	3.19	NA	NA	0.08	NA	NA	NA	NA	NA	
	Gaza Strip	NA	NA	NA	NA	NA	NA	NA	NA	NA	NA	
Medium size banana	West Bank	NA	4.84	-4.0%	-2.9%	23.0%	10.3%	11.3%	41.4%	NA	NA	▲
	Gaza Strip	NA	4.84	-1.8%	-13.6%	20.7%	0.0%	-24.6%	57.0%	NA	NA	▶
red apple	West Bank	NA	7.04	2.5%	22.7%	7.0%	2.6%	20.5%	101.0%	NA	NA	▶
	Gaza Strip	NA	7.76	1.1%	20.2%	17.6%	0.0%	31.2%	129.0%	NA	NA	▶
Green house tomato	West Bank	NA	3.01	19.1%	26.1%	-6.2%	-40.6%	-20.3%	9.5%	NA	NA	▼
	Gaza Strip	NA	2.01	47.0%	6.0%	-22.6%	0.0%	-29.3%	105.7%	NA	NA	▶
Local dry onion	West Bank	NA	2.75	-8.7%	-12.5%	-3.0%	-5.8%	-13.0%	26.7%	NA	NA	▶
	Gaza Strip	NA	1.42	1.9%	-42.9%	-15.8%	0.0%	-49.1%	33.6%	NA	NA	▶
Cauliflower	West Bank	NA	3.17	-20.4%	9.1%	11.6%	-18.0%	21.7%	2.4%	NA	NA	▼
	Gaza Strip	NA	2.14	10.5%	1.9%	29.7%	0.0%	-47.6%	15.2%	NA	NA	▶
Greenhouse cucumber	West Bank	NA	2.84	-42.3%	4.3%	-54.9%	41.9%	40.6%	61.1%	NA	NA	▲
	Gaza Strip	NA	1.82	-10.7%	-3.3%	-11.7%	0.0%	-36.7%	41.0%	NA	NA	▶
Medium size potato	West Bank	NA	2.70	16.8%	-21.0%	-9.7%	-13.8%	-29.7%	-22.1%	NA	NA	▼
	Gaza Strip	NA	1.33	6.8%	-50.6%	-1.9%	0.0%	-65.7%	-4.4%	NA	NA	▶
Fuel Products												
Gas propane tank	West Bank	NA	72.50	2.2%	9.4%	3.3%	0.6%	5.2%	234.9%	NA	NA	▶
	Gaza Strip	NA	72.00	4.1%	8.7%	6.4%	0.0%	2.2%	75.1%	NA	NA	▶
Diesel for heating	West Bank	NA	6.80	1.5%	5.4%	3.0%	0.4%	6.9%	97.9%	NA	NA	▶
	Gaza Strip (Israel)	NA	6.80	1.5%	5.4%	3.0%	0.0%	7.0%	145.6%	NA	NA	▶
	Gaza Strip (Egypt)	NA	3.00	20.5%	43.5%	20.5%	0.0%	NA	NA	NA	NA	▶
Excellent gasoline 96	West Bank	NA	3.76	0.0%	0.0%	9.7%	0.0%	0.4%	-14.5%	NA	NA	▶
	Gaza Strip (Israel)	NA	1.03	9.7%	0.0%	9.7%	0.0%	-25.5%	-55.7%	NA	NA	▶
	Gaza Strip (Egypt)	NA	3.00	16.3%	37.6%	16.3%	0.0%	NA	NA	NA	NA	▶
Water/ One cubic meter/ minimum	West Bank	NA	7.55	0.0%	8.6%	9.7%	0.0%	0.4%	-14.5%	NA	NA	▶
	Gaza Strip	NA	7.55	0.0%	8.6%	9.7%	0.0%	3.6%	47.5%	NA	NA	▶

Impact Code

	Low Price impact in the cost of the food basket (<5%)
	Moderate Price impact in the cost of the food basket (5-10%)
	High Price impact in the cost of the food basket (11-20%)
	Very high Price impact in the cost of the food basket (>20%)

Price Trend Codes

▶	>-10% & <10% change from previous quarter
▲	>10% change from previous quarter
▼	<-10% change from previous quarter