



FOOD SECURITY and MARKET MONITORING REPORT

oPt

occupied Palestinian territory

Issue nr. 31

May-November 2012

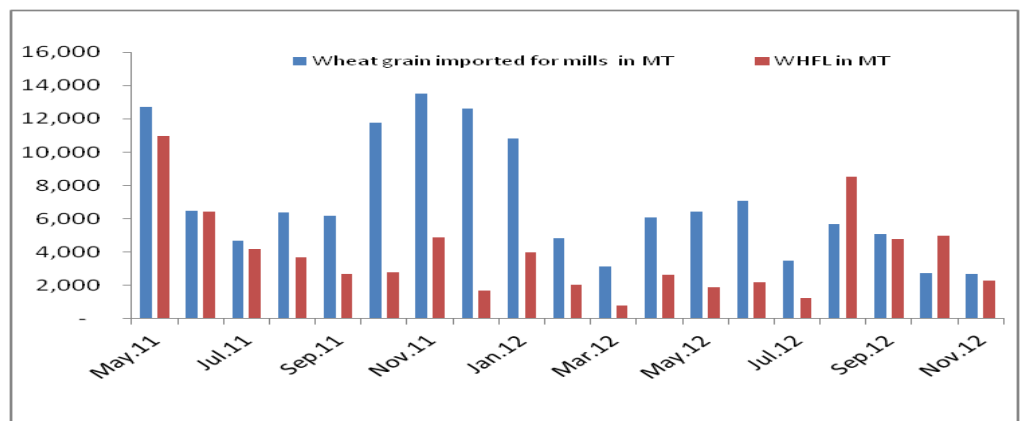
1. PRICE TRENDS & AVAILABILITY IN THE WEST BANK AND GAZA STRIP¹

Wheat Flour

In Gaza Strip the price of local wheat flour increased from 97 NIS/50kg in June 2012 to reach in November to 110 NIS/50kg which is higher than the ceiling price that Ministry of National Economy imposed retailers, this increment in price in last month was due to the 8 days war where the official crossing was closed most of the war period, so the availability of the wheat flour in the market and the competition between traders led some mill owners to increase of the local price. The quantities of wheat grains imported from Kerem Shalom crossing (official crossing) has decreased in November 2012 compared into October 2012 from 2,730 mt to 2,691 mt. In the period from May-November 2012 the total imported wheat grain (from official crossing) was 33,189 mt compared into 61,706 mt in May-November 2011 (reduction by 46%). The Egyptian wheat flour bags continue to be smuggled in large quantities through the tunnels to be sold in black market, mainly to bakeries, where its price increased from 80-82 NIS/50kg in May 2012 to 102 NIS/50kg in November 2012.

Most of the bakeries in Gaza Strips are operating on Solar and electricity due to the shortage of solar in Gaza market in the past 10 months, an agreement between the Bakeries Association, the MoNE and the Petroleum & Gas station owners Association was held to provide all of the 60 Bakeries with minimum 500 liter of solar per week, depends on production quantity for each bakery.

Graph 1: Total wheat grain and flour imported in the Gaza Strip (mt) from May 2011 to November 2012²



1: World Food Programme (WFP) & Palestinian Central Bureau of Statistics (PCBS)
 2: Ministry of National Economy (Gaza Strip)
 3: WFP

FISHING CATCH³

In November 2012 the fishermen being able to reach 6 nautical miles into the sea, as was the case prior to the Cast Lead military offensive in December 2008. As a result, new types of fish has found in Gaza markets in large quantities and at affordable. By the way the data is not available at publishing time.

In October 2012, the fishing catch decreased by 49% (from 456 mt in September 2012 to 234 mt in October 2012).

Comparing the period from May-October 2012 and 2011 the total fishing catch was increased by 82% (from 817 mt to 1484 mt). From below graph, the total fishing catch is reduced in the period from May to October 2012 by 34% compared to same period in 2008.

Graph 2: Fishing catch in the Gaza Strip

The sources (origin) of the fish sold on the Gaza market have also seen some changes between the period from May to October of 2011 and 2012.

Local catch was decreased in 2012 by 13% while the quantities of fish acquired via Rafah Egyptian side were increased by 26% in the period from May to October 2012 (from 94 mt in May, 276 mt in June 2012 to 12 mt in July 2012, 4 mt in August 2012, 45 in September 2012 and 119 in October 2012 for Egyptian fish) this fluctuate is due to the restrictions and security measures implemented by the Egyptian and Gaza authorities.

Fish is no longer imported from Israel since December 2010 and the local market therefore relies solely on the local catch and imports from Egypt.



World Food Programme

wfp.org

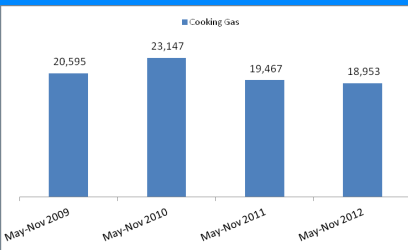
SOURCES OF ENERGY⁴

Cooking Gas

During the period from May to November 2012, the cooking gas import levels increased by 66% compared into January-April 2012 (from 11,403 mt in the period from January to April 2012 to 18,953 mt in May-November 2012). While decreased by 8% compared into May-November 2009 (from 20,595 mt to 18,953 mt).

According to Petroleum and Gaza Station Owners Association, cooking gas is being available in small quantities among the 28 gas stations in Gaza, with almost all of them reported operation at their half capacity.

Graph 3: Cooking Gas in Gaza Strip



Electricity

Power cuts throughout the Gaza Strip remain as high as 8-10 hours per day, as of 6 June 2012, the Power Plant has been operating on four turbines for the first time since 2006, following the installation of electrical transformers, this will enable to increase the electricity production to 80MW during day and 110 mw during the night (full capacity). More fuel should be delivered to the Power Plant to operate at full capacity, the Power Plant needs over 3.5 million liters of fuel a week. However since Sinai attack no Qatari fuel entered. The fuel entered to the power plant during August 2012 (7,147,650 liters) was smuggled through the tunnels. The Power Plant needs at least 600,000 liters daily to operate the Plant at full capacity.

Fuel Prices

Fuel price in Both West Bank and Gaza Strip increased in the first eleven months for current year, by 7% for gasoline 96.

In Gaza Strip, the increment was 24% for diesel for heating (tunnel) and 20% for gasoline 96 (tunnel) for the period from January-November 2012, but comparing with previous month there is no change in the prices of fuel.

Meat

In the Gaza Strip, the fresh meat index increased in November 2012 by 3 percent compared to November 2011. In November 2012, the fresh meat index decreased by 0.14 percent compared to October 2012. Fresh goat meat increased in November 2012 by 3 percent compared to October 2012 (65 NIS/kg to 66.67 NIS/kg) and by 21.2 percent compared to November 2011. The November 2012 price level for fresh beef meat decreased by 1 percent compared into October 2012 price (from 48.33 NIS/kg to 48 NIS/kg) and decreased by 0.7 percent compared to November 2011.

Table1: The imported cattle through legal crossing in Gaza Strip from July 2010-November 2012

Year	Jan	Feb	Mar	Apr	May	Jun	Jul	Aug	Sep	Oct	Nov	Dec	Total
2010	-	-	-	-	-	-	4,142	3,572	1,889	2,522	444	1,542	14,111
2011	1,403	2,070	757	625	223	356	347	3,292	3,855	2,048	660	1,216	16,852
2012	2,007	3,788	2,169	658	2,338	2,437	3,868	3,809	3,520	4,670	2,147		31,411

Cattle imported for slaughtering is now coming from official crossing (Israel). In total, 62,374 cattle have entered into Gaza since July 2010, where the daily requirement of cattle in Gaza Strip is 260 cattle (MoNE, 2008). No cattle smuggled through tunnels in November 2012 but 5,097 sheep were smuggled through tunnels in October 2012.

In the West Bank, the fresh meat index increased in November 2012 by 0.3 percent compared into October 2012 while decreased by 3% compared into November 2011. The prices for fresh beef and goat meat have reached 52.13 NIS/kg and 70.61 NIS/kg respectively in November 2012, a bit different than October 2012 (increased by 1 percent and decreased by 0.1 percent, respectively). Comparing November 2011 to November 2012, the fresh beef and fresh goat meat prices decreased by 3.2 percent and 1.7 percent, respectively. The price for chicken has now reached 16.07 NIS/kg in November 2012, which has decreased by 2 percent compared to October 2012, and increased by 23.3 percent compared to November 2011 (13 NIS/kg).

Vegetables

During the past year, the overall vegetable prices have witnessed a increase in the oPt. In the Gaza Strip, the fresh vegetables index in November 2012 increased by 0.3 percent compared to November 2011. Tomato prices decreased in November 2012 by 42.4 percent compared into November 2011 (from 3.3 NIS/kg to 1.88 NIS/kg), cucumber prices increased in November 2012 by 14.7% compared into same month previous year (from 1.9 NIS/kg to 2.13 NIS/kg) and also potato prices increased in November 2012 by 14.2 percent compared into November 2011 (from 2.1 NIS/kg to 2.4 NIS/kg).

In the West Bank, the fresh vegetables index decreased in November 2012 by 5 percent compared to November 2011. Tomato prices decreased in November 2012 by 39.8 percent compared into November 2011 (from 5 NIS/kg to 3.04 NIS/kg), cucumber prices decreased in November 2012 by 26.1% compared into same month previous month (from 3.9 NIS/kg to 2.9 NIS/kg) but the potato prices increased in November 2012 by 15.3 percent compared into November 2011 (from 3.4 NIS/kg to 3.87 NIS/kg).

4. Source for cooking gas and electricity is WFP, while the fuel prices from PCBS

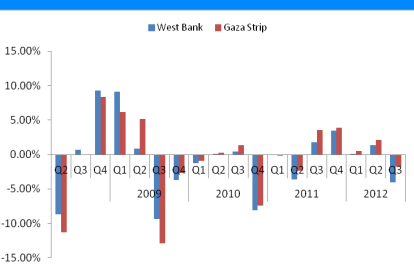
SOCIO-ECONOMIC INDICATORS⁶

Inflation rate

The inflation rate in the West Bank decreased by 1.18 percent in November 2012 compared into October 2012, and by 0.34 percent in Gaza Strip for same period.

In the third quarter of 2012, the purchasing power is become worse in both the West Bank and the Gaza Strip in comparison to the previous quarter. This is the result of decreasing of quarterly exchange rate during this period (by 2.3 percent) combined with and decreasing quarterly Consumer Price Index (CPI) in the West Bank (by 0.5 percent) and a increasing CPI in the Gaza Strip (by 1.8 percent).

Graph 6: Percentage change in purchasing power in WB & GS from Q2 2008 to the Q3 2012

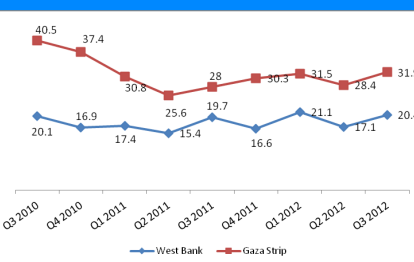


Unemployment

In the third quarter of 2012, 20.4 percent of the West Bank labor force was unemployed (ILO def.). Over a one year period, the unemployment rate has increased by 4% (from 19.7% to 20.4%).

In the Gaza Strip, 31.9 percent of the labor force was unemployed during the third quarter of 2012. Since the third quarter of 2011, unemployment increased by 14 percent (from 28 percent to 31.9 percent).

Graph 7: Unemployment rate (ILO def.)



Exchange rate

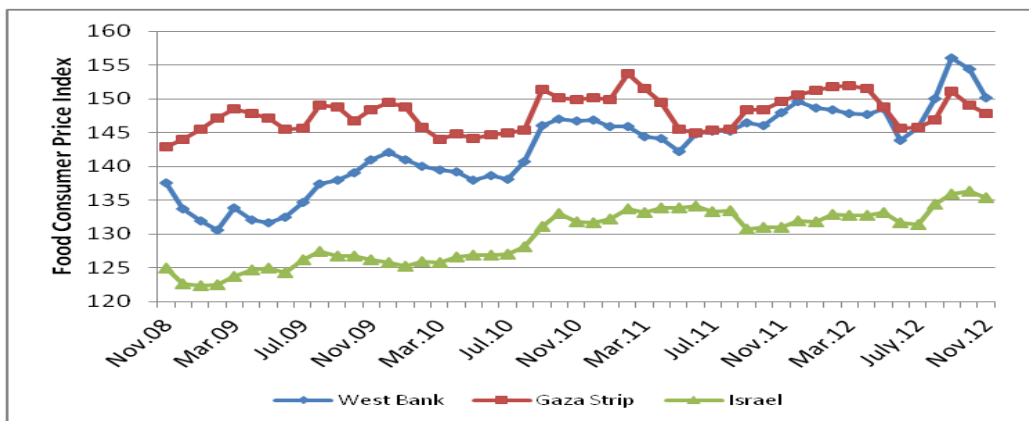
The value of New Israeli Shekel has dis-improved against the dollar since the beginning of this year, with most of the improvement was occurring in August 2012. Where it is increased in November 2012 by 2.3 percent compared into January 2012 (from 3.81NIS/USD \$ to 3.895 NIS/USD \$)

2. COMPARING PRICES

West Bank / Gaza Strip Prices⁵

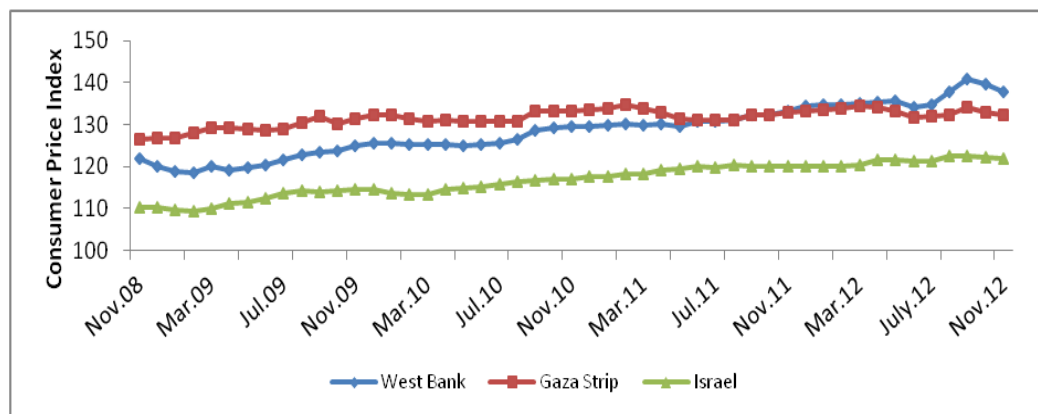
The food consumer price index (FCPI) increased in West Bank by 1.47 percent, decreased by 1.2 percent in Gaza Strip and increased by 3.33 percent in Israel between November 2011 and November 2012. The food consumer price index increased by 22.23 percent, 21.98 percent and 18.87 percent in West Bank, Gaza Strip and Israel, respectively over the last 5 years.

Graph 4: Food Consumer Price Index (FCPI) in West Bank, Gaza Strip and Israel from November 2008/2012 (base year 2004)



As shown in the graph below, the overall Consumer Price Index (CPI) decreased in November 2012 by 1.18 percent in West Bank and by 0.34 percent in Gaza Strip compared into October 2012. Increased by 3.57 percent between November 2011 and November 2012 in the West Bank, decreased by 0.39 percent in the Gaza Strip and increased by 1.44 percent in Israel during the same period. Between November 2007 and 2012, the CPI increased in all regions (West Bank, Gaza Strip and Israel) by 20.15, 17.19 and 15.45 percent, respectively.

Graph 5: Comparing the CPI for West Bank, Gaza Strip and Israel from November 2008/2012 (base year 2004)



The Palestinian Reaction toward increase prices:

The Palestinian Authority Ministry of Economy in West Bank announced a price cap on basic household consumer items, which including bread, oil sugar, rice, eggs, milk and chicken will have fixed prices. The prices will be as follow: 1 kg of bread 4NIS, 1 kg of sugar 4NIS and 2kg of eggs to be 18 NIS. These actions was since the Palestinian are frustrated by rising prices and high levels of unemployment.

5. PCBS & Bank of Israel

6. PCBS

SOCIO-ECONOMIC INDICATORS
 (continued)

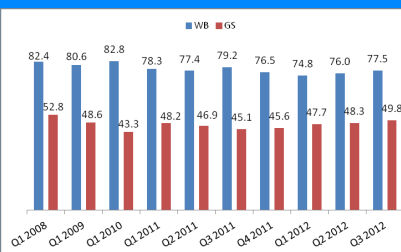
Daily wage

The average real daily wage in the Gaza Strip was NIS 49.8 in third quarter 2012. Over a one year period, it increased by 10.5 percent (45.06 NIS).

Compared to before the blockade (second quarter 2007), the real daily wage decreased by nearly 17 percent (from NIS 59.96 to NIS 49.8).

In the West Bank the average real daily wage was NIS 77.46 in third quarter 2012. It decreased by 2.3 percent compared to third quarter 2011 (NIS 79.24). Comparing second quarter 2007, the real daily wage in the West Bank decreased by 6 percent (it was 82.1 NIS).

Graph8: Real average daily wage (NIS) in West Bank and Gaza Strip

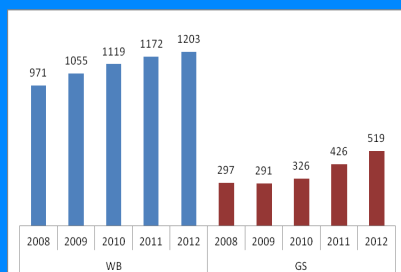

Gross Domestic product (GDP) at constant price

As is noticed from below graph, the GDP at constant price increased in both region, West Bank and Gaza Strip.

In West Bank, real GDP increased in second quarter 2012 by 3 percent compared into Second quarter 2011 (from 1,172 million \$ to 1,203 million \$).

IN Gaza Strip, real GDP increased in second quarter 2012 by 22 percent compared into second quarter 2011 (from 426 million \$ to 519 million \$)

Graph 9: Second Quarter Gross Domestic Product in WB and GS in constant price (base year 2004)


3. GAZA STRIP IMPORT - EXPORT⁷

On average, 50% of the total imports is coming from Israel, then 16% from West Bank during the period from November 2011 till November 2012. The total truckloads entering the Gaza Strip in November 2012 was 2,374 truckloads compared to 3,462 truckloads in October 2012. As noticed from the below table, there are a reduction in the total imported truckloads entering Gaza Strip in November 2012 comparing to October 2012, this is due to the 8 days war where crossing point were closed.

Table 2: Total imports truckloads of commodities by origin

Country Name	Mar.12	Apr.12	May.12	Jun.12	Jul.12	Aug.12	Sep.12	Oct.12	Nov.12
West Bank	461	466	515	403	454	479	286	442	370
Israel	1,346	1,359	1,753	1,735	2,202	1,954	1,619	1,818	1,262
Turkey	131	84	103	92	89	103	59	104	69
China	244	252	470	376	463	394	242	455	189
Arab countries	136	145	150	90	140	165	154	208	143
European countries	229	261	409	358	440	394	244	270	180
Others	193	220	293	249	199	272	223	165	161
Total	2,740	2,787	3,693	3,503	4,078	3,761	2,927	3,462	2,374

In May 2012, 64 tons of cherry tomato and 240 boxes of clothes were exported to Jordan and Europe, respectively. In June 2012, 7.5 ton of furniture are exported to Jordan, in July 2012 the total export was 2,070 of cloths which exported to British, in August 2012 only the total exports crop was tomato (40 ton) which exported to Saudi Arabia and in September 2012 there are 57 tons of furniture to West Bank, 76.8 mt of fortified date bars exported to West Bank for school feeding for World Food Programme project, in October 2012 there were 1200 cartons of basil were exported to Europe and 99.144 mt of fortified date bars were transferred through WFP-Gaza to WFP-West Bank for School feeding project and in November 2012 there is 1440 kg of Cash crops were exported to Europe, in addition to 1460 kg of chives were also exported to Europe.

4. ANNEX⁸

Figure A1: Dairy products and eggs index and Food CPI in WB & GS

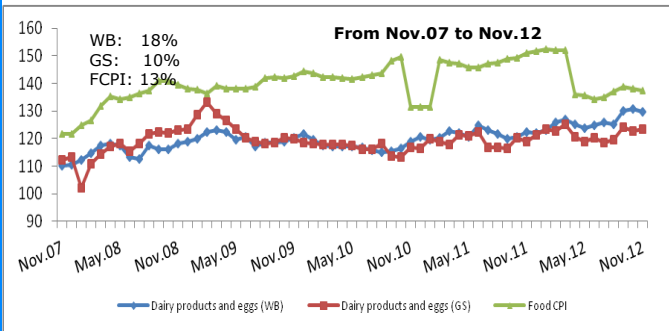


Figure A2: Cereal and its products index and Food CPI in WB & GS

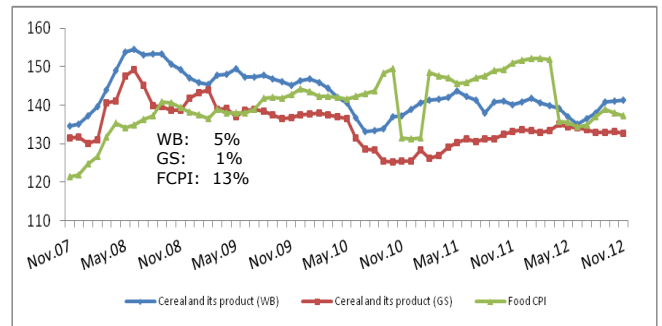


Figure A3: Fresh meat index and Food CPI in WB and GS

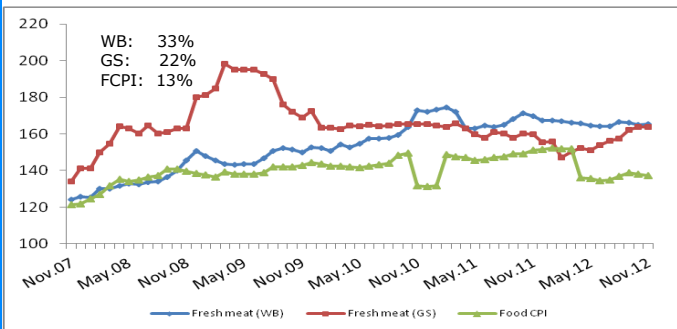


Figure A4: Sugar index and Food CPI in WB and GS

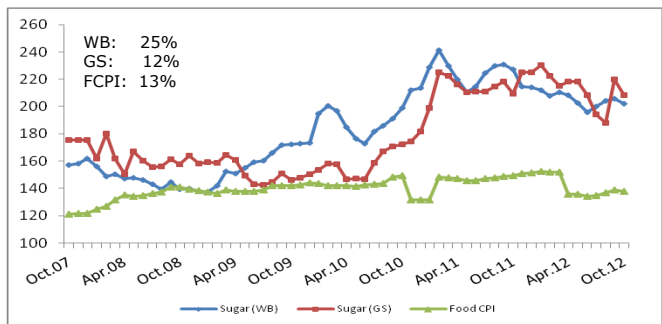


Figure A5: Oils and Fats index and Food CPI in WB and GS

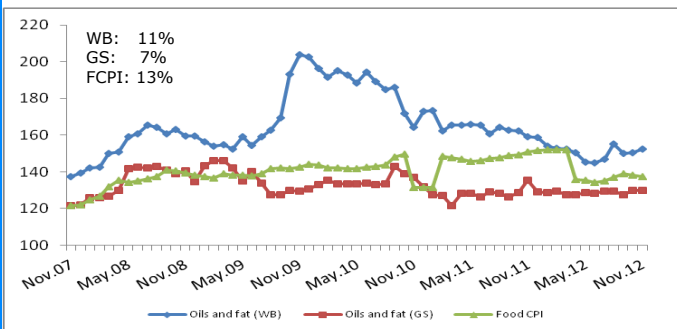


Figure A6: Fruits index and Food CPI in WB and GS

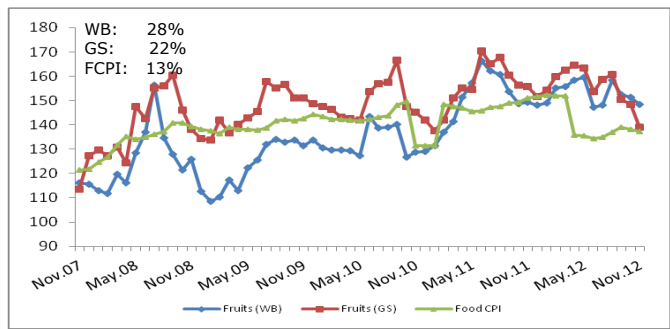


Figure A7: Vegetables index and Food CPI in WB and GS

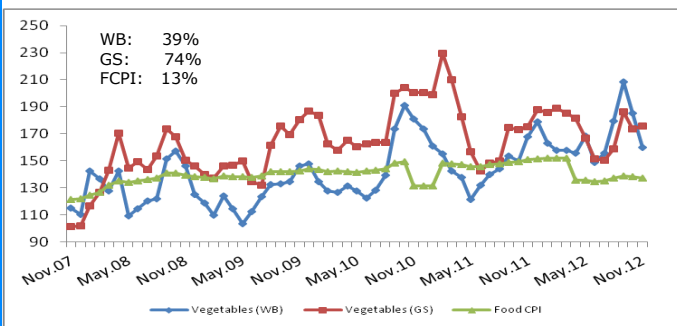


Figure A8: Meat⁹ index and Food CPI in WB and GS

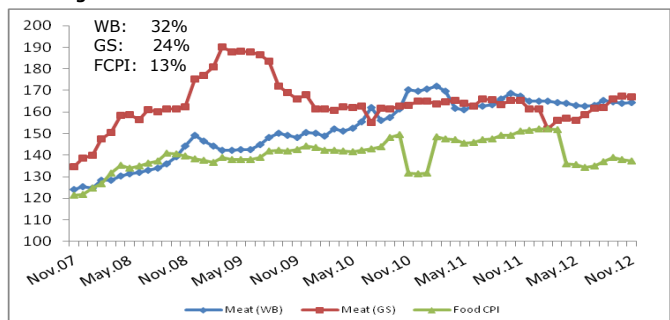
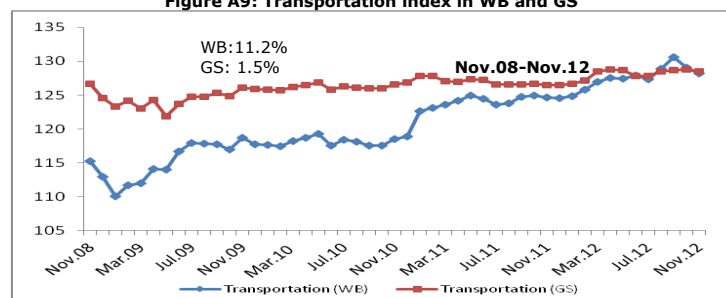


Figure A9: Transportation index in WB and GS



8. PCBS. The percentage change = Total change from Nov.07 until Nov.12 for Food Index and from Nov.08 to Nov.12 for Transportation Index

9. Meat includes fresh & frozen

Table A1: Magnitude of quarterly price changes & contribution to the cost of the food basket, by regions & commodities

Food items	Region	% Caloric Contribution	Current price	% Change from last month	Monthly change from last year (% change)	Monthly change from last 3-month (% change)	Change from last quarter (% change)	Quarterly change from last year (% change)	Quarterly change from last 5-year (% change)	Contribution to the cost of the food basket (%)		Price trend
			Nov.12	Nov.12-Oct.12	Nov.11-Nov.12	Nov.12-Aug.12	Q3 2012 - Q2 2012	Q3 2012-Q3 2011	Q3 2011- Q3 2005	Cumulative impact of the quarter	Cumulative impact from 5 years average	
Staple Food												
Short grain profiled rice	West Bank	12%	106.8	-0.6%	-6.6%	3.2%	-2.2%	-6.9%	24.4%	-0.27%	2.93%	▶
	Gaza Strip	12%	120.0	1.2%	-13.3%	0.0%	-3.5%	-11.6%	40.2%	-0.42%	4.82%	▶
Haifa white flour	West Bank	36%	175.4	-0.5%	12.3%	8.2%	8.6%	-1.2%	49.4%	3.10%	17.79%	▶
	Gaza Strip	36%	na	na	na	na	na	na	na	na	na	
White bread	West Bank	36%	4.0	0.0%	0.0%	0.0%	0.0%	2.9%	33.3%	0.00%	12.00%	▶
	Gaza Strip	36%	3.0	0.0%	11.9%	0.0%	2.5%	9.5%	50.0%	0.92%	18.00%	▶
Olive oil	West Bank	NA	25.6	1.5%	-7.5%	-3.2%	4.2%	-12.5%	27.7%	NA	NA	▶
	Gaza Strip	NA	30.3	0.0%	-2.7%	0.0%	1.9%	-3.9%	41.8%	NA	NA	▶
Corn oil	West Bank	5.0%	28.3	4%	8.6%	4.0%	1.8%	6.9%	0.0%	0.09%	0.0%	▶
	Gaza Strip	5.0%	26.7	1.3%	0.6%	0.0%	-2.8%	1.1%	0.0%	-0.14%	0.0%	▶
Lentils	West Bank	NA	7.6	1.8%	2.1%	2.9%	1.3%	4.3%	68.0%	NA	NA	▶
	Gaza Strip	NA	5.0	0.0%	-37.5%	-28.6%	na	na	na	na	na	
Chick beans	West Bank	NA	8.8	6.9%	23.8%	12.3%	1.5%	9.5%	47.8%	NA	NA	▶
	Gaza Strip	NA	7.5	7.1%	18.4%	5.9%	4.4%	2.6%	34.5%	NA	NA	▶
Fine white sugar	West Bank	NA	4.4	-1.5%	-6.9%	-3.2%	1.4%	-6.5%	70.3%	NA	NA	▶
	Gaza Strip	NA	4.0	-11.1%	-20.0%	9.1%	-3.0%	-5.6%	57.3%	NA	NA	▶
White table salt	West Bank	NA	1.8	3.7%	-3.4%	0.9%	-5.7%	-0.5%	13.3%	NA	NA	▶
	Gaza Strip	NA	1.0	-10.6%	16.7%	0.0%	5.6%	10.5%	7.7%	NA	NA	▶
Animal Products												
Chicken eggs	West Bank	1.0%	17.2	-5.0%	15.1%	15.7%	1.7%	8.9%	35.1%	0.02%	0.35%	▶
	Gaza Strip	1.0%	15.3	1.7%	15.1%	13.0%	-2.1%	12.6%	44.2%	-0.02%	0.44%	▶
Fresh goat meat with bones	West Bank	NA	70.6	-0.1%	-1.7%	-0.3%	0.5%	0.6%	74.5%	NA	NA	▶
	Gaza Strip	NA	66.7	2.6%	21.2%	5.3%	10.3%	11.4%	34.9%	NA	NA	▲
Fresh beef meat	West Bank	NA	52.1	0.6%	-3.2%	-1.1%	0.5%	-0.5%	57.1%	NA	NA	▶
	Gaza Strip	NA	48.0	-0.7%	-0.7%	3.6%	2.9%	-2.8%	54.0%	NA	NA	▶
Fresh chicken without feathers	West Bank	NA	16.1	-1.8%	23.3%	9.9%	3.3%	5.8%	58.7%	NA	NA	▶
	Gaza Strip	NA	16.0	-5.9%	23.1%	3.2%	10.2%	24.0%	109.7%	NA	NA	▲
Fresh red snapper	West Bank	NA	14.8	0.7%	1.5%	1.8%	2.0%	-4.8%	-48.0%	NA	NA	▶
	Gaza Strip	NA	13.0	0.0%	1.3%	0.0%	1.7%	-32.8%	-37.0%	NA	NA	▶
Frozen fish	West Bank	NA	31.4	1.1%	1.9%	8.7%	0.5%	21.4%	52.9%	NA	NA	▶
	Gaza Strip	NA	23.0	0.0%	-8.0%	0.0%	-8.0%	43.8%	122.6%	NA	NA	▶
Diary Products												
Pasteurized milk 3% fat	West Bank	NA	7.2	2.6%	2.6%	2.6%	0.9%	1.0%	30.2%	NA	NA	▶
	Gaza Strip	NA	8.0	0.0%	1.1%	0.0%	0.0%	1.9%	45.5%	NA	NA	▶
Powdered milk	West Bank	NA	96.7	-0.7%	-0.6%	-1.6%	-0.6%	1.5%	19.6%	NA	NA	▶
	Gaza Strip	NA	91.5	0.0%	-7.3%	-1.6%	1.1%	0.0%	15.6%	NA	NA	▶
Powdered milk kikoz (No.1)	West Bank	NA	36.4	-0.8%	13.0%	1.9%	3.9%	11.2%	82.9%	NA	NA	▶
	Gaza Strip	NA	32.2	0.0%	8.1%	0.0%	6.9%	7.8%	69.8%	NA	NA	▶
Yogurt	West Bank	NA	4.7	-4.8%	8.0%	2.0%	7.7%	4.5%	31.4%	NA	NA	▶
	Gaza Strip	NA	7.0	0.0%	0.0%	0.0%	0.0%	0.0%	40.0%	NA	NA	▶
Labaneh	West Bank	NA	8.1	0.5%	3.9%	-1.1%	1.8%	2.5%	22.5%	NA	NA	▶
	Gaza Strip	NA	8.3	0.0%	-3.1%	0.0%	1.4%	-6.7%	11.1%	NA	NA	▶
White boiled goat cheese	West Bank	NA	24.9	2.4%	0.0%	3.8%	0.1%	0.0%	0.0%	NA	NA	▶
	Gaza Strip	NA	22.3	0.0%	-10.7%	0.0%	0.0%	-10.7%	0.0%	NA	NA	▼

Table A1 (Cont): Magnitude of quarterly price changes & contribution to the cost of the food basket, by regions & commodities

Food items	Region	% Caloric Contribution	Current price	% Change from last month	Monthly change from last year (% change)	Monthly change from last 3-month (% change)	Change from last quarter (% change)	Quarterly change from last year (% change)	Quarterly change from last 5-year (% change)	Contribution to the cost of the food basket (%)		Price trend
			Nov.12	Nov.12-Oct.12	Nov.11-Nov.12	Nov.12-Aug.12	Q3 2012 - Q2 2012	Q3 2012-Q3 2011	Q3 2011-Q3 2005	Cumulative impact of the quarter	Cumulative impact from 5 years average	
Vegetables & Fruits												
Big size orange	West Bank	NA	na	NA	na	na	NA	NA	NA	NA	NA	
	Gaza Strip	NA	na	NA	na	na	NA	NA	NA	NA	NA	
Medium size banana	West Bank	NA	3.55	-23.6%	-18.5%	-30.4%	18.8%	-8.0%	26.1%	NA	NA	▲
	Gaza Strip	NA	3.61	-28.6%	-21.2%	-27.8%	21.3%	-10.9%	56.9%	NA	NA	▲
red apple	West Bank	NA	5.51	-2.9%	-14.9%	-18.2%	-7.7%	-10.3%	58.4%	NA	NA	▶
	Gaza Strip	NA	4.01	-16.7%	-29.8%	-46.3%	-6.5%	1.4%	129.7%	NA	NA	▶
Green house tomato	West Bank	NA	3.04	-30.3%	-39.8%	-31.3%	35.6%	58.9%	102.5%	NA	NA	▲
	Gaza Strip	NA	1.88	-21.7%	-42.4%	-26.9%	21.4%	21.4%	125.6%	NA	NA	▲
Local dry onion	West Bank	NA	4.31	12.4%	34.4%	63.3%	3.9%	5.7%	60.4%	NA	NA	▶
	Gaza Strip	NA	2.41	-20.5%	2.9%	12.2%	70.3%	15.6%	96.9%	NA	NA	▲
Cauliflower	West Bank	NA	3.63	-18.3%	-16.0%	-30.0%	52.4%	5.3%	88.5%	NA	NA	▲
	Gaza Strip	NA	2.79	-9.7%	12.9%	17.5%	8.3%	15.0%	28.3%	NA	NA	▶
Greenhouse cucumber	West Bank	NA	2.90	-21.2%	-26.1%	-4.6%	23.4%	13.2%	56.3%	NA	NA	▲
	Gaza Strip	NA	2.13	8.4%	14.7%	9.7%	15.3%	7.6%	64.3%	NA	NA	▲
Medium size potato	West Bank	NA	3.87	24.3%	15.3%	25.1%	9.1%	10.1%	30.2%	NA	NA	▶
	Gaza Strip	NA	2.40	-1.9%	14.2%	-9.0%	48.8%	51.5%	42.2%	NA	NA	▲
Fuel Products												
Gas propane tank	West Bank	NA	66.83	1.3%	-4.9%	-7.6%	1.3%	8.3%	100.4%	NA	NA	▶
	Gaza Strip	NA	65.00	0.0%	-7.1%	-9.7%	0.8%	9.2%	99.5%	NA	NA	▶
Diesel for heating	West Bank	NA	6.60	-1.5%	0.0%	-5.0%	1.3%	7.2%	124.1%	NA	NA	▶
	Gaza Strip (Israel)	NA	7.10	0.0%	7.6%	4.4%	1.8%	7.7%	124.4%	NA	NA	▶
	Gaza Strip (Egypt)	NA	3.10	na	na	na	na	na	na	NA	NA	
Excellent gasoline 96	West Bank	NA	3.76	0.0%	0.0%	-2.3%	0.0%	0.0%	-7.0%	NA	NA	▶
	Gaza Strip (Israel)	NA	1.03	-2.3%	0.0%	-2.3%	0.0%	0.0%	-57.4%	NA	NA	▶
	Gaza Strip (Egypt)	NA	3.10	na	na	na	na	na	na	NA	NA	
Water/ One cubic meter/ minimum	West Bank	NA	7.35	0.0%	7.0%	-2.3%	0.0%	0.0%	-7.0%	NA	NA	▶
	Gaza Strip	NA	7.35	0.0%	7.0%	-2.3%	-2.1%	6.2%	43.9%	NA	NA	▶

Impact Code

	Low Price impact in the cost of the food basket (<5%)
	Moderate Price impact in the cost of the food basket (5-10%)
	High Price impact in the cost of the food basket (11-20%)
	Very high Price impact in the cost of the food basket (>20%)

Price Trend Codes

▶	>-10% & <10% change from previous quarter
▲	>10% change from previous quarter
▼	<-10% change from previous quarter