



ព្រឹត្តិបត្រតម្លៃអាហារ និងប្រាក់ឈ្នួលពលកម្មនៅកម្ពុជា



CAMBODIA FOOD PRICE AND WAGE BULLETIN

Agricultural Marketing Office, DPS, MAFF

February 2013, Issue 48



HIGHLIGHTS

- **Food purchasing power of households** increased in rural and urban areas by 2.0% and 3.0% month-on-month, respectively.
- **Retail price of lowest quality rice** decreased in rural and urban areas by 3.1% and 1.5% month-on-month, respectively.
- **Wholesale price of mixed rice** decreased by 7.5% month-on-month and by 4.4% year-on-year.
- **Export price of Thai and Vietnamese rice**, showed different trends: Thai rice prices increased by 0.7% month-on-month and Vietnamese rice prices decreased by 1.1% month-on-month.
- The **FAO Food Price Index** averaged 210 points in February, unchanged month-on-month, but a decrease of 2.5% year-on-year.
- The **Inflation Rate** in Cambodia was 1.8% in January 2013. Food and gasoline prices increased by 0.2% and 2.7% month-on-month, respectively.

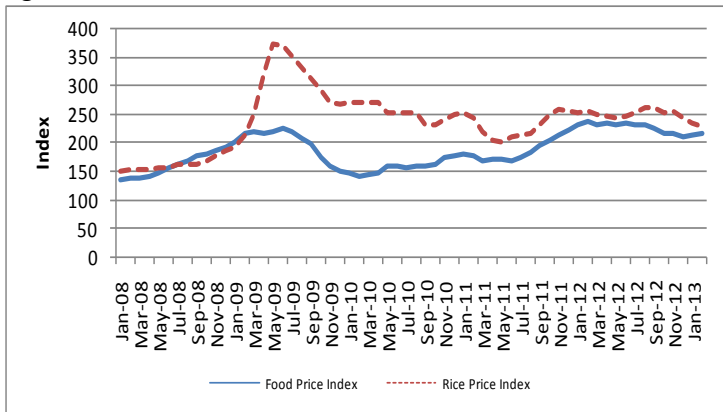
Overview

This Bulletin is a joint publication¹ by the Agricultural Marketing Office (Department of Planning and Statistics) of the Ministry of Agriculture, Forestry and Fisheries and the United Nations World Food Programme Cambodia. It monitors the price of food commodities and wage rates of unskilled labor on a monthly basis. It aims to detect changes and identify trends in the food purchasing power of vulnerable households.

International Food and Rice Prices

The FAO Food Price Index², measuring the international price level of a basket of key food commodities, averaged 210 points in February 2013, remaining unchanged for the past two months. Dairy and oil/fats prices increased, while cereals and sugar fell. The International Rice Price Index averaged 239 points. The index slightly increased as a result of the rice pledging policy of Thailand and India and also decreased supplies in the US.

Figure 1: FAO Food Price Index and Rice Price Index



Source: FAO, <http://www.fao.org/worldfoodsituation/wfs-home/foodpricesindex/en/>

CONTENT

Overview	1
International Food and Rice Prices	1
Regional Rice Wholesale Prices.....	1
Cambodia Consumer Price Index (CPI)	2
Local Food Commodity Wholesale Prices.....	2
Price Monitoring and Forecasting.....	2
Local Food Commodity Retail Prices	2
Food Purchasing Power	3
Appendix 1: Sentinel Surveillance Market Sites.....	4
Appendix 2: Price of Food Commodities by Market.....	5

Regional Rice Wholesale Prices

In February 2013, the f.o.b. prices³ of Thai A1 Super white rice (100% broken) and Vietnamese white rice (25% broken) were 562 USD/mt and 369 USD/mt, respectively (Figure 2).

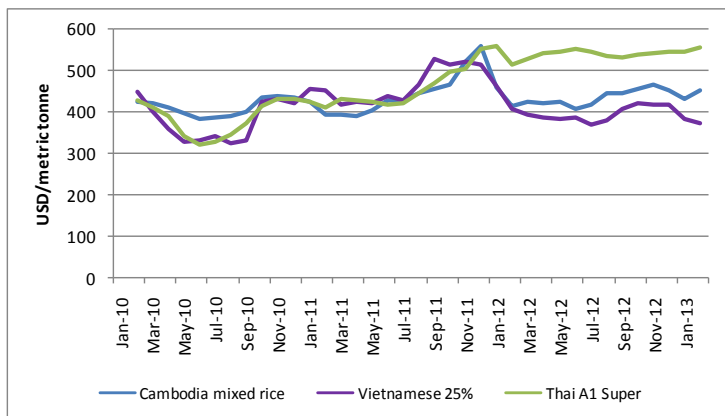
Thai rice export prices increased by 0.7% month-on-month and by 6.0% year-on-year. Media sources reported that the Thai Commerce Ministry intends to propose revisions to the rice pledging policy to stimulate exports of Thai rice to compete with countries offering lower prices. Vietnamese rice export prices decreased by 1.1% month-on-month and by 6.6% year-on-year. The government's General Statistics Office reported that exports were lower than estimated due to the Lunar New Year holiday in February.

¹ The publication has been produced jointly since September 2011.

² The FAO Food Price Index consists of the average of commodity group price indices (i.e. meat, dairy, cereals, oils/fats, and sugar) weighted with the average export shares of each of the groups for 2002-2004.

³ Free on board (f.o.b.) price includes all charges up to the placing of goods on board a ship at the port of departure specified by the buyer.

Figure 2: Export price of Thai and Vietnamese white rice and Cambodia mixed rice



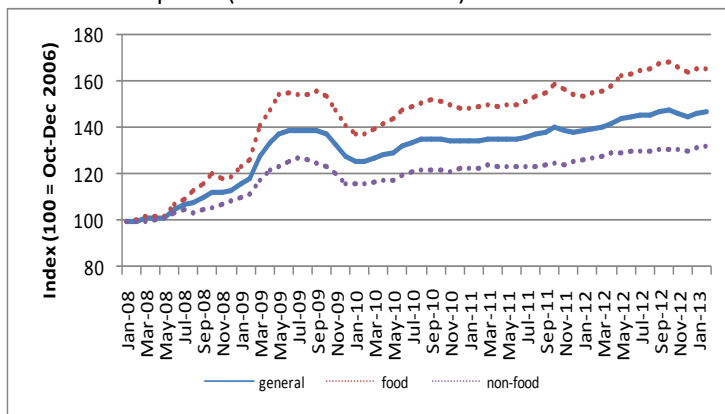
Source: FAO, <http://www.fao.org/es/esc/prices/PricesServlet.jsp?lang=en>

Cambodia Consumer Price Index (CPI)

The general Consumer Price Index (CPI)⁴ measures the cost of a consumption basket composed of 259 items. Each item is weighted based on their importance in an average household's expenditure⁵. In January 2013, the general CPI averaged 149.2 points, an increase of 0.3% month-on-month. The inflation rate, as measured by the year-on-year increase in the consumer price index, was 1.8%. Gasoline prices increased by 2.7% month-on-month and were 4.5% higher than the same period last year.

The Food Price Index measures the cost of the food items in the general CPI's consumption basket. Food items make up 43.2% of the total consumption basket. In January 2013, food prices increased by 0.2% month-on-month but were 1.4% higher than last year. (Figure 3)

Figure 3: Relative change in general consumer prices, food prices and non-food prices (base = Oct-Dec 2006)

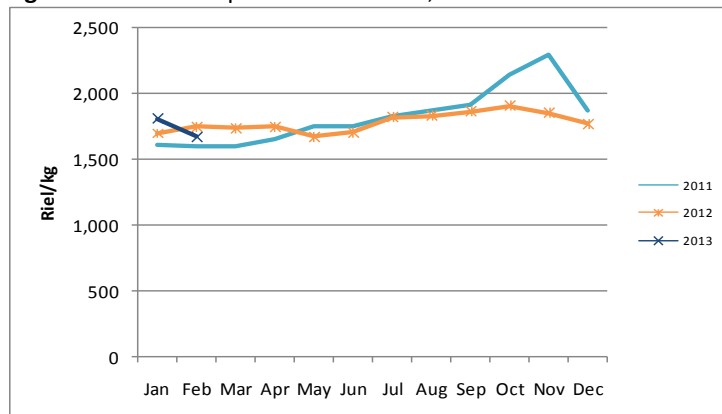


Source: National Institute of Statistics

Local Food Commodity Wholesale Prices

Data⁶ from the Agricultural Marketing Office of the Ministry of Agriculture, Forestry and Fisheries (AMO MAFF) shows that the average wholesale price of mixed rice⁷ decreased by 7.5% on a month-on-month basis and by 4.4% year-on-year in February (Figure 4). After adjusting for the annual inflation rate of 1.8%, the real wholesale price of mixed rice was 2.6% lower than that of the corresponding month last year.

Figure 4: Wholesale price of mixed rice, 2010-2012

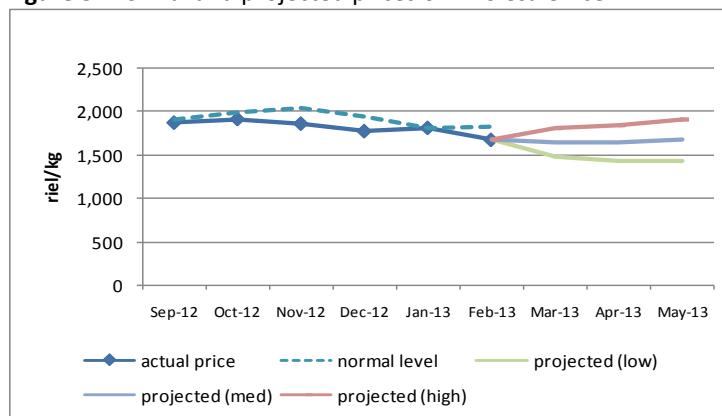


Source: Agricultural Marketing Office (AMO), MAFF <http://www.agriculturalmarketinformation.org.kh>

Price Monitoring and Forecasting

FAO's price monitoring tool compares recent actual wholesale prices from AMO MAFF with "normal" price levels. The normal price level takes into account historical price levels and adjusts for inflation and seasonal factors. A discrepancy between current actual prices and "normal" prices indicates that current prices are higher/lower than what would be expected. In February 2013, the actual wholesale price of mixed rice was 8.1% lower than the expected normal price⁸, which indicates that price levels were below historically normal levels. The FAO price monitoring tool also projects prices based on the current price, current inflation rate and seasonal factors. The high and low bands are set so that actual prices will fall within the range 80% of the time. Prices for the upcoming three months (March, April and May) were projected by the price monitoring tool. Rice prices are expected to decrease in March and April due to downward pressure as a result of the dry season rice harvest. However, prices are projected to increase in May as the affect of increased supply from the dry season harvest subsides (Figure 5).

Figure 5: Normal and projected prices of wholesale rice



Source: AMO, WFP, FAO

Local Food Commodity Retail Prices

In February 2013, the average retail price of the lowest quality rice⁹ in rural and urban areas was 1,671 riel/kg and 1,793 riel/kg, respectively (Figure 6). On a month-on-month basis, rice prices in rural and urban areas decreased by 3.1% and 1.5% respectively.

⁴ The CPI is collected and reported by the National Institute of Statistics (NIS). Data from February 2013 was not available at the time of publication.

⁵ Relative item expenditure weights are derived from the 2004 Cambodia Socio-Economic Survey and adjusted to October-December 2006 price levels.

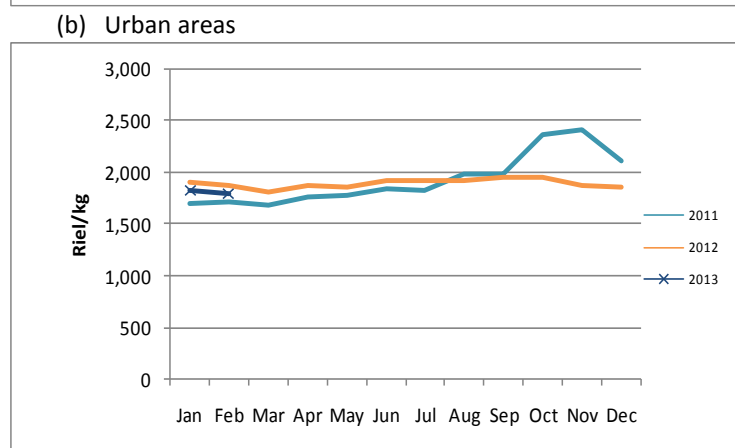
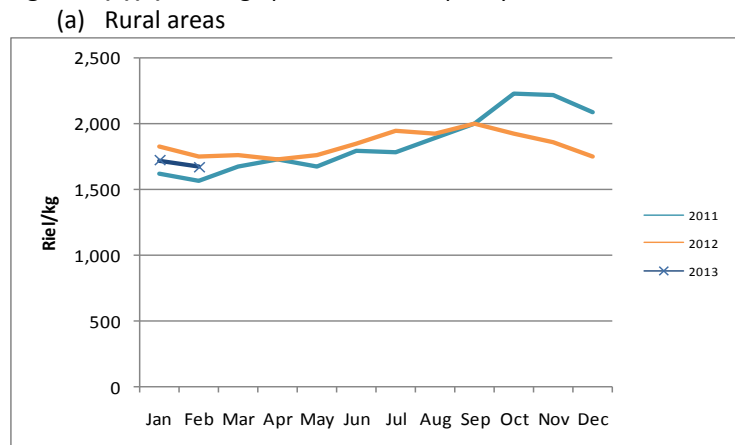
⁶ From provincial markets in Kampong Chhnang, Takeo, Siem Reap, Prey Veng, Phnom Penh, Kampot, Battambang, Banteay Meanchey, and Kampong Cham

⁷ Mixed rice is considered a low-quality type of rice.

⁸ 2008 prices are excluded from the FAO price monitoring tool analysis as the food price crisis in mid-2008 distorts the seasonal factors.

⁹ Mixed rice, IR rice and Banla Pdao rice

Figure 6 (a)(b): Average price of lowest quality rice, 2010-2012



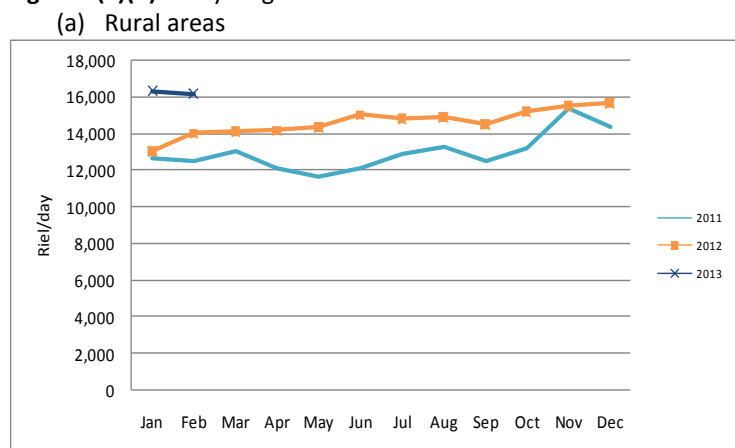
Source: WFP

On a year-on-year basis, retail rice prices (nominal) in rural and urban areas decreased by 4.4% and 4.1%, respectively. Interviewed local rice traders attributed the downward pressure on prices to the increased supply of wet and dry season rice. With the inflation rate of 1.8%, the real retail prices of rice in rural and urban areas decreased, year-on-year, by 6.2% and 5.9%, respectively. Retail prices of other food commodities (i.e., second quality rice, vegetable oil, smoked fish, fresh fish, pork, and duck eggs) in each of the 10 rural and 11 urban markets are presented in Appendix 2.

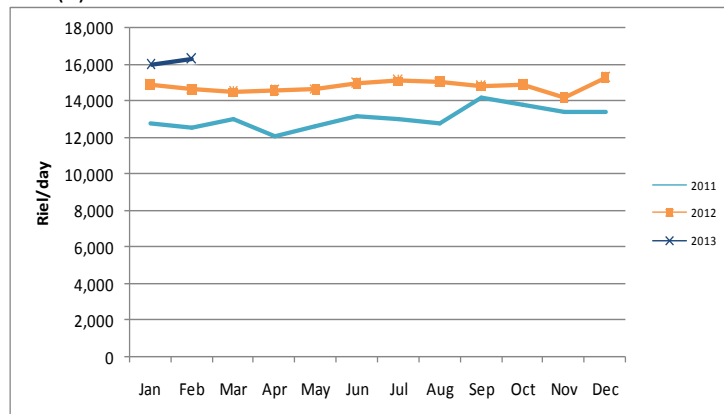
Food Purchasing Power

Daily wages of unskilled workers engaged in rice and non-rice farming and construction work are monitored by WFP on a monthly basis. In February 2013, the average wage of unskilled labor in rural areas was 16,166 riel/day, a decrease of 1.1% month-on-month, and in urban areas was 16,305 riel/day, an increase of 1.5% month-on-month (Figure 7).

Figure 7(a)(b): Daily wage of unskilled labor



(b) Urban areas



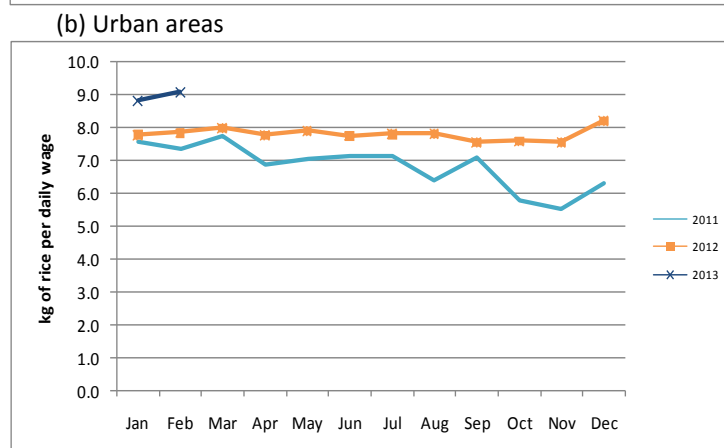
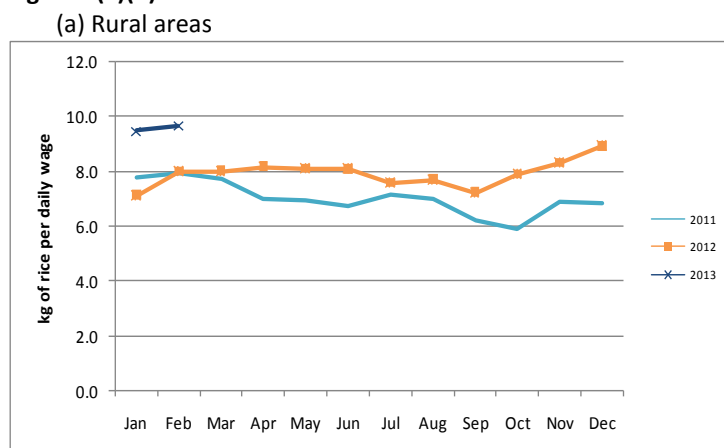
Source: WFP

Interviews with village chiefs and unskilled laborers revealed that wage rates remained stable after the increase at the start of wet season rice harvest. Demand for agricultural labor is driven by the on-going wet season rice harvest and dry season rice planting.

Terms of trade (ToT) is used to assess household food purchasing power by taking the ratio of two different components. In the Cambodian context, the ToT takes the ratio of the daily wage rates of unskilled laborers and the retail price of lowest quality rice in the market. This gives an indication of the amount of rice that an unskilled wage laborer can purchase with a daily wage.

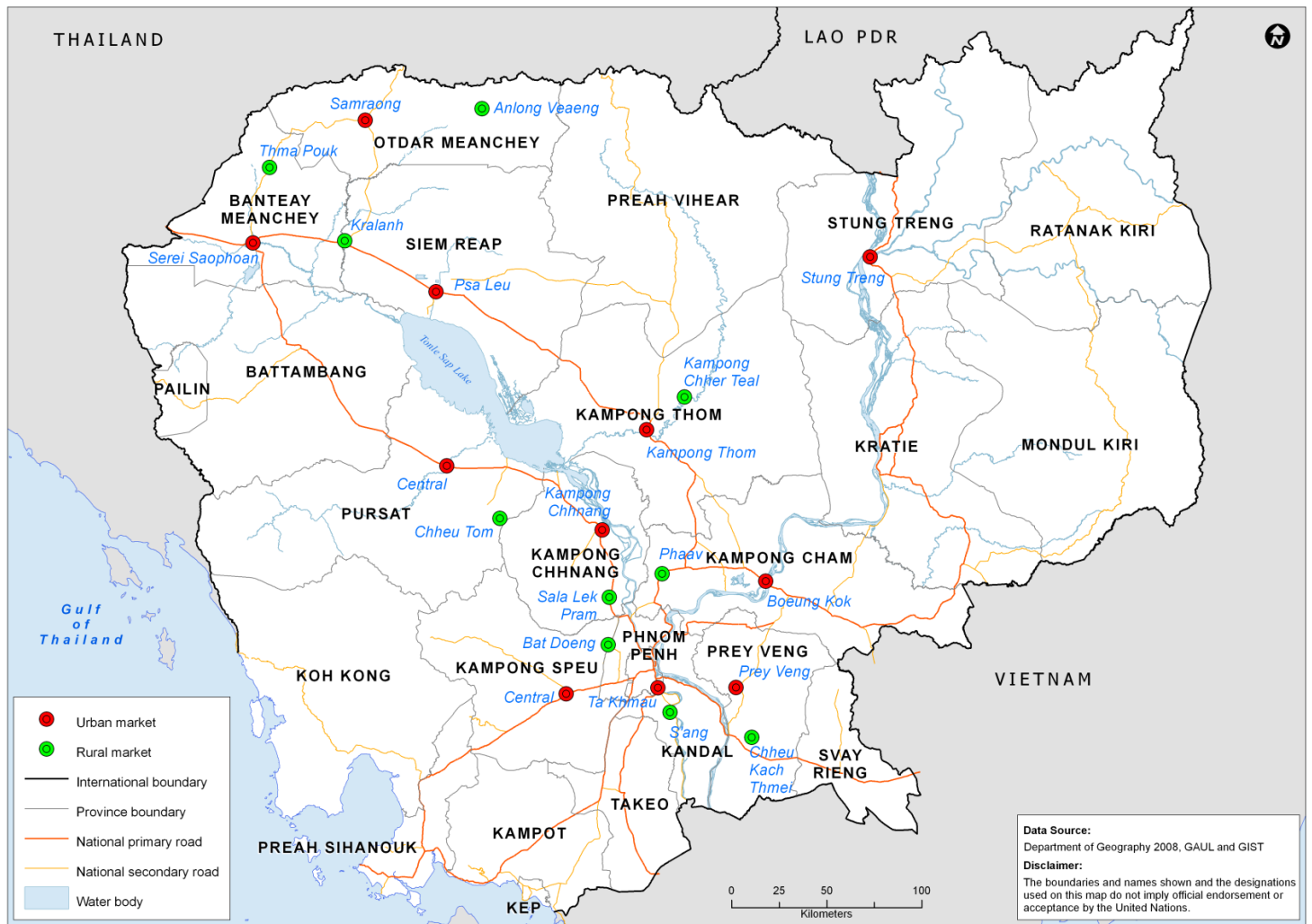
In February 2013, the ToT in rural areas was 9.7 kg/day, an increase of 2.0% month-on-month; for urban areas, the ToT was 9.1 kg/day, an increase of 3.0% month-on-month. The increase in purchasing power in rural areas was caused by the decrease in rice prices though this was moderated by a slight decrease in unskilled wage rates. In urban areas, food purchasing power improved as a result of a decrease in rice prices in addition to a increase in unskilled wages (Figure 8).

Figure 8(a)(b): Terms of Trade of unskilled labor and rice



Source: WFP

Appendix 1: Location of sentinel market sites in urban and rural areas in Cambodia



Contacts

Agricultural Marketing Office

Department of Planning and Statistics, Ministry of Agriculture, Forestry and Fisheries
 Mr. Meach Yady (meachyady@gmail.com)
<http://www.agriculturalmarketinformation.org.kh>

United Nations World Food Programme

Vulnerability Analysis and Mapping (VAM) Unit
 Rukhshona Rajabova (rukhshona.rajabova@wfp.org), Yav Long (Yav.Long@wfp.org), Chanvibol Choeur (Chanvibol.Choeur@wfp.org), Kurt Burja (Kurt.Burja@wfp.org)
www.wfp.org/countries/cambodia

Appendix 2(a)(b): Price of food commodities by market

(a) Rural markets

Food Item	Province	Market	price (Riel/kg)	price change (%)			direction of change		
				1 month	3 months	1 year	1 month	3 months	1 year
Second quality rice	Banteay Meanchey	Thma Puok	-	-	-	-	-	-	-
	Siem Reap	Kralanh	1,600	-	-	-	-	-	-
	Oddar Meanchey	Anlong Veng	2,167	10.2	-18.2	-9.7	↑	↓	↔
	Kampong Cham	Pha'av	1,483	-8.4	-12.7	-13.3	↓	↓	↔
	Kampong Thom	Kampong Chheuteal	1,900	-	-	15.2	-	-	↑
	Prey Veng	Chheu Kach Thmei	1,400	-	-35.2	-	-	↓	-
	Kampong Chnang	Sala Lek Pram	1,687	-15.7	-25.6	-29.7	↓	↓	↓
	Kampong Speu	Bat Doeng	-	-	-	-	-	-	-
	Pursat	Chheu Tom	-	-	-	-	-	-	-
	Stung Treng	n/a	-	-	-	-	-	-	-
Kandal	S'ang	2,000	-7.7	-9.1	-7.0	↓	↔	↔	
Lowest quality rice	Banteay Meanchey	Thma Puok	2,000	11.1	-4.8	-	↑	↔	-
	Siem Reap	Kralanh	1,607	-10.7	2.3	1.7	↓	↔	↔
	Oddar Meanchey	Anlong Veng	1,633	-10.9	-7.5	-16.9	↓	↔	↓
	Kampong Cham	Pha'av	1,400	-	-13.8	-7.3	-	↓	↔
	Kampong Thom	Kampong Chheuteal	-	-	-	-	-	-	-
	Prey Veng	Chheu Kach Thmei	1,400	-16.0	0.0	-15.2	↓	↔	↓
	Kampong Chnang	Sala Lek Pram	1,520	-	-24.0	-15.6	-	↓	↓
	Kampong Speu	Bat Doeng	1,933	3.6	-10.8	-3.3	↔	↓	↔
	Pursat	Chheu Tom	1,700	-10.5	-15.0	-	↓	↓	-
	Stung Treng	n/a	-	-	-	-	-	-	-
Kandal	S'ang	1,850	-5.9	-2.6	-5.1	↓	↔	↔	
Vegetable oil	Banteay Meanchey	Thma Puok	6,226	-11.1	-4.2	-8.0	↓	↔	↔
	Siem Reap	Kralanh	4,933	-24.4	-17.4	-15.8	↓	↓	↓
	Oddar Meanchey	Anlong Veng	5,167	-13.9	-7.2	-13.9	↓	↔	↔
	Kampong Cham	Pha'av	4,467	-20.2	-6.9	-18.8	↓	↔	↓
	Kampong Thom	Kampong Chheuteal	5,167	-39.5	-5.4	-10.7	↓	↔	↔
	Prey Veng	Chheu Kach Thmei	5,167	-11.4	-0.6	-11.4	↓	↔	↓
	Kampong Chnang	Sala Lek Pram	5,267	-17.3	-3.7	-16.8	↓	↔	↓
	Kampong Speu	Bat Doeng	4,933	-17.8	-6.3	-17.8	↓	↔	↓
	Pursat	Chheu Tom	5,000	-16.7	-9.6	-16.7	↓	↔	↓
	Stung Treng	n/a	-	-	-	-	-	-	-
Kandal	S'ang	4,700	-19.9	-10.2	-21.7	↓	↓	↓	
Smoked fish	Banteay Meanchey	Thma Puok	21,100	17.2	0.5	-	↑	↔	-
	Siem Reap	Kralanh	18,000	-	-	-	-	-	-
	Oddar Meanchey	Anlong Veng	18,000	-10.0	-	0.0	↓	-	↔
	Kampong Cham	Pha'av	28,250	17.7	-	142.1	↑	-	↑
	Kampong Thom	Kampong Chheuteal	-	-	-	-	-	-	-
	Prey Veng	Chheu Kach Thmei	18,333	-	-	-	-	-	-
	Kampong Chnang	Sala Lek Pram	15,556	-	-	-	-	-	-
	Kampong Speu	Bat Doeng	20,333	-1.6	-18.7	-	↔	↓	-
	Pursat	Chheu Tom	18,200	-	-	-	-	-	-
	Stung Treng	n/a	-	-	-	-	-	-	-
Kandal	S'ang	-	-	-	-	-	-	-	

Food Item	Province	Market	price (Riel/kg)	price change (%)			direction of change		
				1 month	3 months	1 year	1 month	3 months	1 year
Fresh fish	Banteay Meanchey	Thma Puok	-	-	-	-	-	-	-
	Siem Reap	Kralanh	-	-	-	-	-	-	-
	Oddar Meanchey	Anlong Veng	4,500	-10.0	-10.0	-10.0	↓	↔	↔
	Kampong Cham	Pha'av	4,833	-6.5	-3.3	-12.1	↓	↔	↔
	Kampong Thom	Kampong Chheuteal	-	-	-	-	-	-	-
	Prey Veng	Chheu Kach Thmei	5,000	-	-	-	-	-	-
	Kampong Chnang	Sala Lek Pram	5,333	-5.9	18.5	-	↓	↑	-
	Kampong Speu	Bat Doeng	5,833	-2.8	16.7	-2.8	↔	↑	↔
	Pursat	Chheu Tom	5,000	-21.1	-0.7	-23.1	↓	↔	↓
	Stung Treng	n/a	-	-	-	-	-	-	-
Kandal	S'ang	6,000	0.0	20.0	-14.3	↔	↑	↔	
Pork with fat	Banteay Meanchey	Thma Puok	12,000	-20.0	-20.0	-20.0	↓	↓	↓
	Siem Reap	Kralanh	12,000	-14.3	20.0	-2.7	↓	↑	↔
	Oddar Meanchey	Anlong Veng	11,000	-28.3	-15.4	-23.3	↓	↓	↓
	Kampong Cham	Pha'av	13,000	-13.3	8.3	2.6	↓	↔	↔
	Kampong Thom	Kampong Chheuteal	10,667	-11.1	6.7	-25.6	↓	↔	↓
	Prey Veng	Chheu Kach Thmei	12,000	-14.3	0.0	-14.3	↓	↔	↔
	Kampong Chnang	Sala Lek Pram	12,333	-11.9	2.8	-17.8	↓	↔	↓
	Kampong Speu	Bat Doeng	14,000	-6.7	16.7	0.0	↓	↑	↔
	Pursat	Chheu Tom	13,167	-12.2	-6.0	-17.7	↓	↔	↓
	Stung Treng	n/a	-	-	-	-	-	-	-
Kandal	S'ang	14,500	-1.1	11.5	-3.3	↔	↑	↔	
Duck egg	Banteay Meanchey	Thma Puok	600	0.0	9.1	0.0	↔	↔	↔
	Siem Reap	Kralanh	533	6.7	18.5	27.0	↑	↑	↑
	Oddar Meanchey	Anlong Veng	600	20.0	32.4	29.0	↑	↑	↑
	Kampong Cham	Pha'av	500	-9.1	31.6	3.4	↓	↑	↔
	Kampong Thom	Kampong Chheuteal	485	-3.0	1.0	-	↔	↔	-
	Prey Veng	Chheu Kach Thmei	500	10.3	11.1	0.0	↑	↑	↔
	Kampong Chnang	Sala Lek Pram	533	6.7	2.6	18.5	↑	↔	↑
	Kampong Speu	Bat Doeng	583	-	12.2	16.7	-	↑	↑
	Pursat	Chheu Tom	450	-0.7	-3.6	-10.0	↔	↔	↔
	Stung Treng	n/a	-	-	-	-	-	-	-
Kandal	S'ang	547	10.8	21.5	-	↑	↑	-	

- ↑ Price increase above normal fluctuation
- ↔ Normal price fluctuation
- ↓ Price decrease below normal fluctuation
- Commodity not available in reporting month

Price fluctuation is considered normal if change within:
5% for month, 10% for 3 months, 15% for 1 year

(b) Urban markets

Food Item	Province	Market	price (Riel/kg)	price change (%)			direction of change		
				1 month	3 months	1 year	1 month	3 months	1 year
Second quality rice	Banteay Meanchey	Serei Saophoan	2,100	0.0	-8.7	-0.8	→	→	→
	Siem Reap	Psa Leu	1,833	5.8	1.9	3.8	↑	→	→
	Oddar Meanchey	Samraong	2,000	0.0	-	-20.0	→	-	↓
	Kampong Cham	Boeung Kok	2,200	11.9	15.8	9.1	↑	↑	→
	Kampong Thom	Central	1,667	-3.9	-20.6	-3.9	→	↓	→
	Prey Veng	Central	1,750	-2.8	-18.0	-2.8	→	↓	→
	Kampong Chhnang	Central	1,767	-32.1	-32.1	-29.3	↓	↓	↓
	Kampong Speu	Central	1,967	1.7	-13.2	-20.3	→	↓	↓
	Pursat	Central	2,367	-	2.9	-5.3	-	→	→
	Stung Treng	Stung Treng	-	-	-	-	-	-	-
Kandal	Ta Khmao	2,200	-1.5	-5.7	0.0	→	→	→	
Lowest quality rice	Banteay Meanchey	Serei Saophoan	1,900	0.0	-9.5	0.0	→	→	→
	Siem Reap	Psa Leu	1,567	-3.7	-7.8	-11.0	→	→	→
	Oddar Meanchey	Samraong	2,000	-4.8	2.6	-7.7	→	→	→
	Kampong Cham	Boeung Kok	1,633	-3.9	0.5	2.1	→	→	→
	Kampong Thom	Central	1,600	-	-	-	-	-	-
	Prey Veng	Central	-	-	-	-	-	-	-
	Kampong Chhnang	Central	-	-	-	-	-	-	-
	Kampong Speu	Central	1,800	-	-7.7	1.9	-	→	→
	Pursat	Central	1,850	-2.6	0.9	-11.9	→	→	→
	Stung Treng	Stung Treng	-	-	-	-	-	-	-
Kandal	Ta Khmao	2,000	-7.7	0.0	0.0	↓	→	→	
Vegetable oil	Banteay Meanchey	Serei Saophoan	6,867	0.0	10.8	-1.0	→	↑	→
	Siem Reap	Psa Leu	4,933	-15.9	-12.9	-14.9	↓	↓	→
	Oddar Meanchey	Samraong	5,333	-8.6	-5.9	-14.7	↓	→	→
	Kampong Cham	Boeung Kok	4,767	-19.7	1.4	-20.6	↓	→	↓
	Kampong Thom	Central	5,000	-18.9	-9.1	-15.7	↓	→	↓
	Prey Veng	Central	5,000	-16.7	-9.1	-16.7	↓	→	↓
	Kampong Chhnang	Central	4,667	-23.1	-9.7	-22.2	↓	→	↓
	Kampong Speu	Central	5,000	-11.8	-6.2	-12.3	↓	→	↓
	Pursat	Central	5,250	-12.5	-7.9	-18.0	↓	→	↓
	Stung Treng	Stung Treng	-	-	-	-	-	-	-
Kandal	Ta Khmao	4,933	-16.9	-15.4	-17.8	↓	↓	↓	
Smoked fish	Banteay Meanchey	Serei Saophoan	21,000	0.0	0.0	-3.1	→	→	→
	Siem Reap	Psa Leu	15,540	33.2	9.7	31.3	↑	→	↑
	Oddar Meanchey	Samraong	16,000	-20.0	-	-20.0	↓	-	↓
	Kampong Cham	Boeung Kok	21,000	14.5	-	37.0	↑	-	↑
	Kampong Thom	Central	20,000	-	-	33.3	-	-	↑
	Prey Veng	Central	23,333	55.6	26.1	-	↑	↑	-
	Kampong Chhnang	Central	16,567	-28.0	-	-21.1	↓	-	↓
	Kampong Speu	Central	-	-	-	-	-	-	-
	Pursat	Central	-	-	-	-	-	-	-
	Stung Treng	Stung Treng	-	-	-	-	-	-	-
Kandal	Ta Khmao	-	-	-	-	-	-	-	

Food Item	Province	Market	price (Riel/kg)	price change (%)			direction of change		
				1 month	3 months	1 year	1 month	3 months	1 year
Fresh fish	Banteay Meanchey	Serei Saophoan	4,500	-	12.5	-	-	↑	-
	Siem Reap	Psa Leu	5,500	-5.7	-	-	↓	-	-
	Oddar Meanchey	Samraong	4,800	-4.0	-4.0	-	→	→	-
	Kampong Cham	Boeung Kok	5,000	-14.8	0.0	8.7	↓	→	→
	Kampong Thom	Central	-	-	-	-	-	-	-
	Prey Veng	Central	5,000	-	-9.1	-23.1	-	→	↓
	Kampong Chhnang	Central	6,000	-14.3	0.0	2.9	↓	→	→
	Kampong Speu	Central	6,000	0.0	-	-	→	-	-
	Pursat	Central	5,750	-4.2	-	-17.9	→	-	↓
	Stung Treng	Stung Treng	-	-	-	-	-	-	-
Kandal	Ta Khmao	6,000	-14.3	0.0	-14.3	↓	→	→	
Pork with fat	Banteay Meanchey	Serei Saophoan	14,333	2.4	-4.4	-10.4	→	→	→
	Siem Reap	Psa Leu	12,000	2.9	19.2	-2.7	→	↑	→
	Oddar Meanchey	Samraong	11,000	-25.0	-21.4	-23.3	↓	↓	↓
	Kampong Cham	Boeung Kok	15,000	-4.3	25.0	-4.3	→	↑	→
	Kampong Thom	Central	12,000	-16.3	6.7	0.0	→	→	→
	Prey Veng	Central	14,000	-6.7	7.7	-6.7	↓	→	→
	Kampong Chhnang	Central	14,667	-17.0	18.9	-6.4	↓	↑	→
	Kampong Speu	Central	12,000	-20.0	0.0	-7.7	↓	→	→
	Pursat	Central	13,000	-9.3	8.3	0.0	↓	→	→
	Stung Treng	Stung Treng	-	-	-	-	-	-	-
Kandal	Ta Khmao	15,333	-14.8	2.2	2.2	↓	→	→	
Duck egg	Banteay Meanchey	Serei Saophoan	500	-9.1	0.0	-9.1	↓	→	→
	Siem Reap	Psa Leu	550	13.8	29.9	15.4	↑	↑	↑
	Oddar Meanchey	Samraong	600	12.5	20.0	21.6	↑	↑	↑
	Kampong Cham	Boeung Kok	510	2.1	34.3	5.6	→	↑	→
	Kampong Thom	Central	500	-	-6.3	-	-	→	-
	Prey Veng	Central	567	-	25.9	61.9	-	↑	↑
	Kampong Chhnang	Central	523	4.7	13.8	10.6	→	↑	→
	Kampong Speu	Central	547	5.8	31.2	9.3	↑	↑	→
	Pursat	Central	500	10.3	21.0	0.0	↑	↑	→
	Stung Treng	Stung Treng	-	-	-	-	-	-	-
Kandal	Ta Khmao	547	9.3	11.6	-	↑	↑	-	

- ↑ Price increase above normal fluctuation
- Normal price fluctuation
- ↓ Price decrease below normal fluctuation
- Commodity not available in reporting month

Price fluctuation is considered normal if change within:
5% for month, 10% for 3 months, 15% for 1 year