



ព្រឹត្តិបត្រតម្លៃអាហារ និងប្រាក់ឈ្នួលពលកម្មនៅកម្ពុជា



CAMBODIA FOOD PRICE AND WAGE BULLETIN

Agricultural Marketing
Office, DPS, MAFF

April 2013, Issue 50



HIGHLIGHTS

- **Food purchasing power of households** decreased in rural areas by 6.9% and increased in urban areas by 0.5% month-on-month.
- **Retail price of lowest quality rice** increased in rural areas by 2.5% and in urban areas decreased by 0.2% month-on-month.
- **Wholesale price of mixed rice** increased by 2.3% month-on-month and decreased by 3.5% year-on-year.
- **Export price of Thai and Vietnamese rice** decreased, month-on-month, by 1.1% and 2.2%, respectively.
- The **FAO Food Price Index** averaged 215.5 points in April, an increase of 1% month-on-month due to an increase in the price of dairy products.
- The **Inflation Rate** in Cambodia was 1.0% in March 2013. Food prices remained stable and gasoline prices decreased by 2.7% month-on-month.

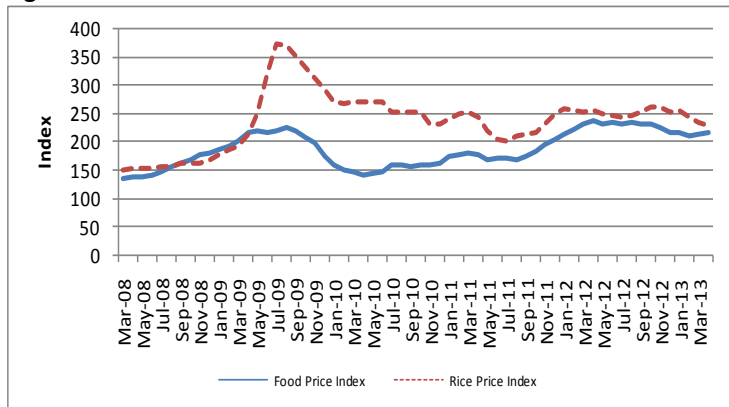
Overview

This Bulletin is a joint publication¹ by the Agricultural Marketing Office (Department of Planning and Statistics) of the Ministry of Agriculture, Forestry and Fisheries and the United Nations World Food Programme Cambodia. It monitors the price of food commodities and wage rates of unskilled labor on a monthly basis. It aims to detect changes and identify trends in the food purchasing power of vulnerable households.

International Food and Rice Prices

The FAO Food Price Index², measuring the international price level of a basket of key food commodities, averaged 215.5 points in April 2013, an increase of 1% month-on-month. The reason for the increase is similar to last month: it was driven by a sharp increase in the price of dairy products. The International Rice Price Index averaged 240 points, a decrease of 0.8% month-on-month due to the falling price of Indica rice.

Figure 1: FAO Food Price Index and Rice Price Index



Source: FAO, <http://www.fao.org/worldfoodsituation/wfs-home/foodpricesindex/en/>

CONTENT

Overview	1
International Food and Rice Prices	1
Regional Rice Wholesale Prices.....	1
Cambodia Consumer Price Index (CPI)	2
Local Food Commodity Wholesale Prices.....	2
Price Monitoring and Forecasting.....	2
Local Food Commodity Retail Prices	2
Food Purchasing Power	3
Appendix 1: Sentinel Surveillance Market Sites.....	4
Appendix 2: Price of Food Commodities by Market	5

Regional Rice Wholesale Prices

In April 2013, the f.o.b. prices³ of Thai A1 Super white rice (100% broken) and Vietnamese white rice (25% broken) were 551 USD/mt and 361 USD/mt, respectively (Figure 2).

The export price of Thai A1 Super white rice decreased by 1.1% month-on-month and by 0.9% year-on-year. According to the Thai Rice Association, Thai rice exporters face higher competition because the rice pledging price in Thailand is higher than regional market prices and world demand for rice has not increased.

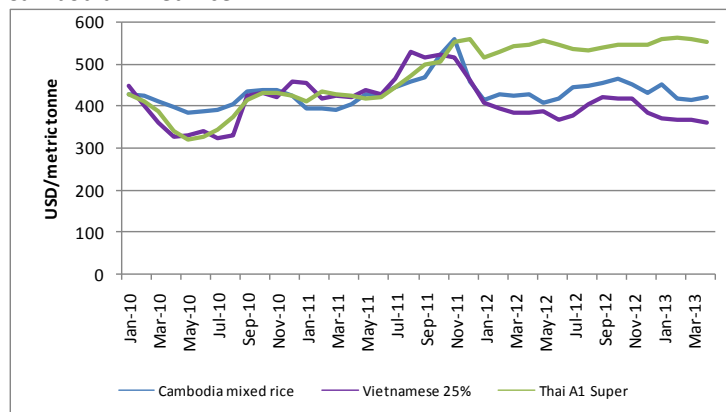
The export price of Vietnamese white rice decreased by 2.2% month-on-month and by 6.0% year-on-year. According to the Vietnam Food Association, regional rice export prices from Thailand and Myanmar will be more competitive with that of Vietnam this year.

¹ The publication has been produced jointly since September 2011.

² The FAO Food Price Index consists of the average of commodity group price indices (i.e. meat, dairy, cereals, oils/fats, and sugar) weighted with the average export shares of each of the groups for 2002-2004.

³ Free on board (f.o.b.) price includes all charges up to the placing of goods on board a ship at the port of departure specified by the buyer.

Figure 2: Export price of Thai and Vietnamese white rice and Cambodia mixed rice



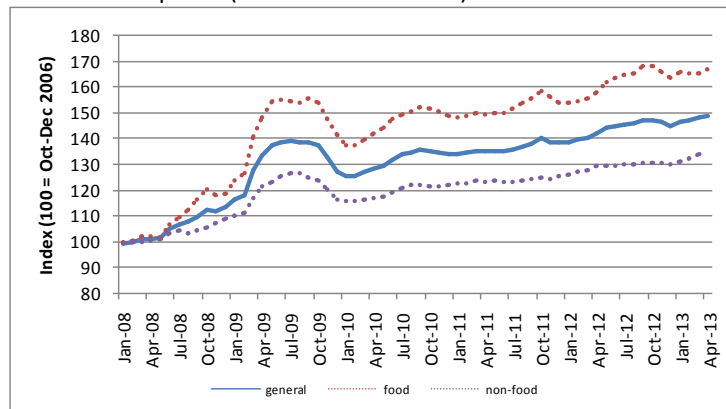
Source: FAO, <http://www.fao.org/es/esc/prices/PricesServlet.jsp?lang=en>

Cambodia Consumer Price Index (CPI)

The general Consumer Price Index (CPI)⁴ measures the cost of a consumption basket composed of 259 items. Each item is weighted based on their importance in an average household's expenditure⁵. In March 2013, the general CPI averaged 149.4 points, a decrease of 0.1% month-on-month. The inflation rate, as measured by the year-on-year increase in the consumer price index, was 1.0%. Gasoline prices decreased by 2.7% month-on-month and were 3.9% lower than the same period last year.

The Food Price Index measures the cost of the food items in the general CPI's consumption basket. Food items make up 43.2% of the total consumption basket. In March 2013, food prices remained stable month-on-month but were 1.7% higher than last year (Figure 3).

Figure 3: Relative change in general consumer prices, food prices and non-food prices (base = Oct-Dec 2006)

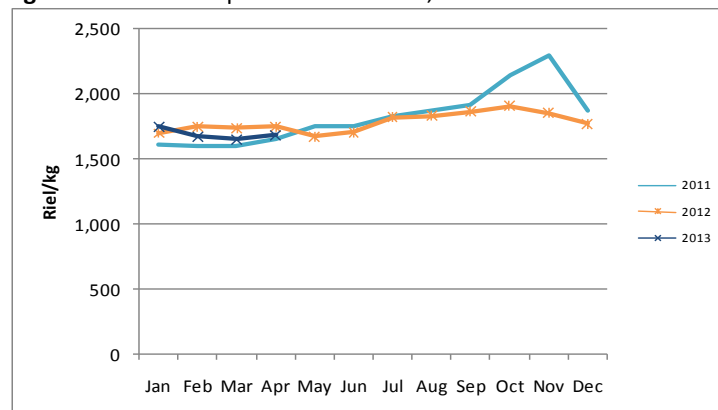


Source: National Institute of Statistics

Local Food Commodity Wholesale Prices

Data⁶ from the Agricultural Marketing Office of the Ministry of Agriculture, Forestry and Fisheries (AMO MAFF) shows that the average wholesale price of mixed rice⁷ increased 2.3% month-on-month but decreased 3.5% year-on-year in April (Figure 4). After adjusting for the annual inflation rate of 1.0%, the real wholesale price of mixed rice was 4.5% lower than that of the corresponding month last year.

Figure 4: Wholesale price of mixed rice, 2011-2013



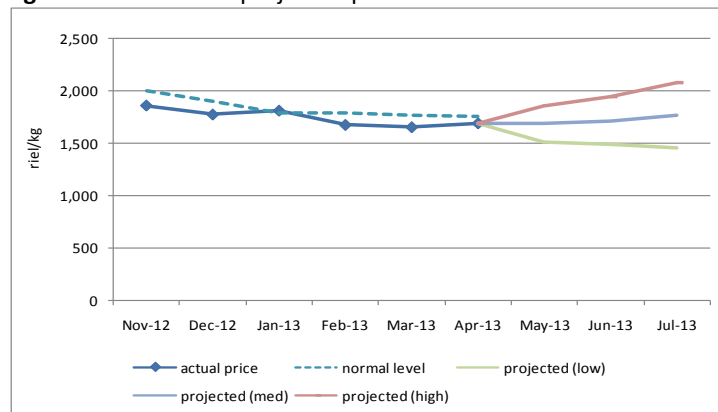
Source: Agricultural Marketing Office (AMO), MAFF <http://www.agriculturalmarketinformation.org.kh>

Price Monitoring and Forecasting

FAO's price monitoring tool compares recent actual wholesale prices from AMO MAFF with "normal" price levels. The normal price level takes into account historical price levels and adjusts for inflation and seasonal factors. A discrepancy between current actual prices and "normal" prices indicates that current prices are higher/lower than what would be expected.

In April 2013, the actual wholesale price of mixed rice was 3.9% lower than the expected normal price⁸, which indicates that price levels were below historically normal levels. The FAO price monitoring tool also projects prices based on the current price, current inflation rate and seasonal factors. The high and low bands are set so that actual prices will fall within the range 80% of the time. Prices for the upcoming three months (May, June and July) were projected by the price monitoring tool: prices are expected to increase steadily in the upcoming quarter as demand increases until the beginning of the main harvest season (Figure 5).

Figure 5: Normal and projected prices of wholesale rice



Source: AMO, WFP, FAO

Local Food Commodity Retail Prices

In April 2013, the average retail price of the lowest quality rice⁹ in rural and urban areas was 1,666 riel/kg and 1,769 riel/kg, respectively (Figure 6). On a month-on-month basis, rice prices in rural areas increased by 2.5% and in urban areas decreased by 0.2%. Market rice traders reported that the upward pressure on prices in rural areas is due to the beginning of the lean season.

⁴ The CPI is collected and reported by the National Institute of Statistics (NIS). Data from April 2013 was not available at the time of publication.

⁵ Relative item expenditure weights are derived from the 2004 Cambodia Socio-Economic Survey and adjusted to October-December 2006 price levels.

⁶ From provincial markets in Kampong Chhnang, Takeo, Siem Reap, Prey Veng, Phnom Penh, Kampot, Battambang, Banteay Meanchey, and Kampong Cham

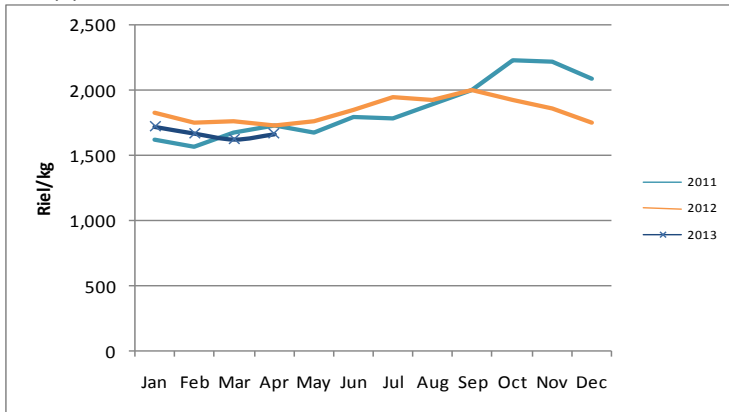
⁷ Mixed rice is considered a low-quality type of rice.

⁸ 2008 prices are excluded from the FAO price monitoring tool analysis as the food price crisis in mid-2008 distorts the seasonal factors.

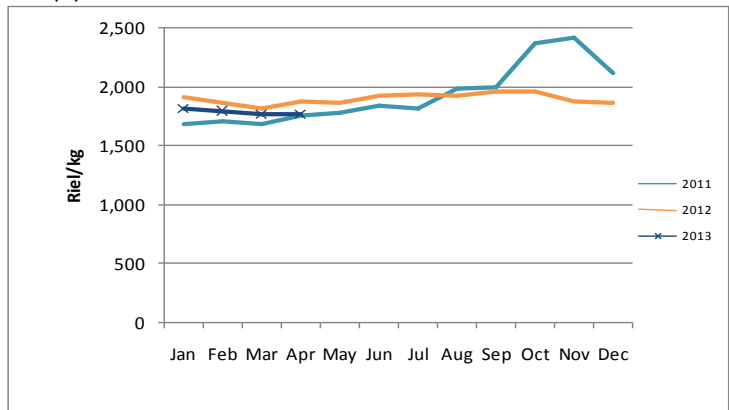
⁹ Mixed rice, IR rice and Banla Pdao rice

Figure 6 (a)(b): Average price of lowest quality rice, 2011-2013

(a) Rural areas



(b) Urban areas



Source: WFP

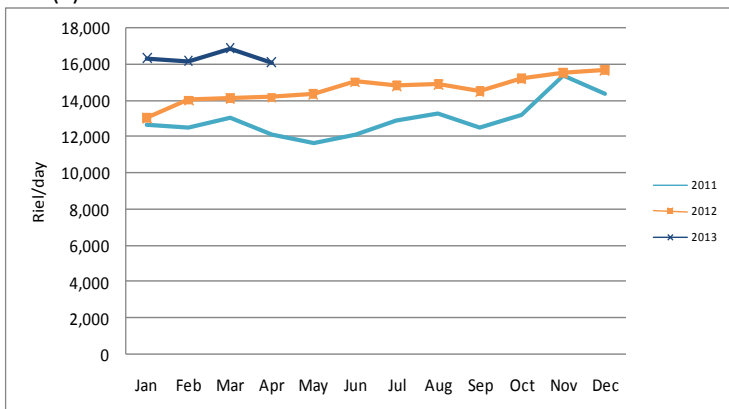
On a year-on-year basis, retail rice prices (nominal) in rural and urban areas decreased by 3.7% and 5.6%, respectively. With the inflation rate of 1.0%, the real retail price of rice in rural and urban areas decreased, year-on-year, by 4.7% and 6.6%, respectively. Retail prices of other food commodities (i.e., second quality rice, vegetable oil, smoked fish, fresh fish, pork, and duck eggs) in each of the 10 rural and 11 urban markets are presented in Appendix 2.

Food Purchasing Power

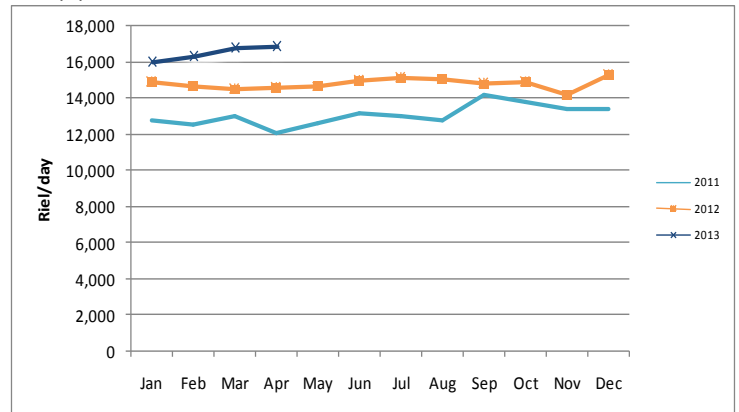
Daily wages of unskilled workers engaged in rice and non-rice farming and construction work are monitored by WFP on a monthly basis. In April 2013, the average wage of unskilled labor in rural areas was 16,114 riel/day, a decrease of 4.6% month-on-month, and in urban areas was 16,875 riel/day, an increase of 0.3% month-on-month (Figure 7).

Figure 7(a)(b): Daily wage of unskilled labor

(a) Rural areas



(b) Urban areas



Source: WFP

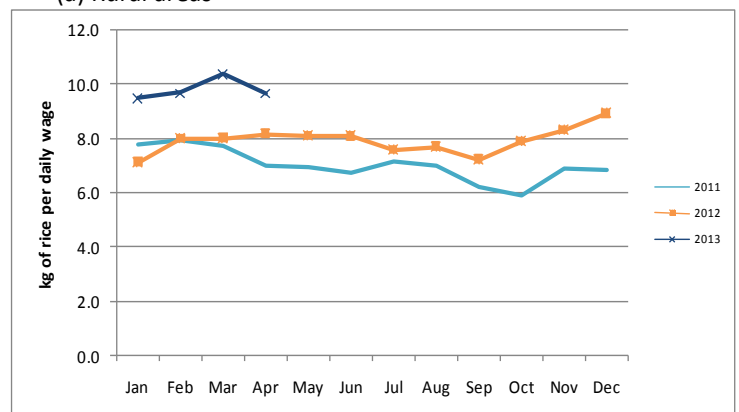
In rural areas unskilled wages decreased after increasing in February. Interviews with unskilled laborers revealed that wage rates decreased due to lower demand for unskilled labor because the dry season harvest has been completed and the wet season planting season hasn't started yet. In urban areas unskilled wages increased as a result of high demand for labor in order to complete construction works before the start of the rainy season.

Terms of trade (ToT) is used to assess household food purchasing power by taking the ratio of two different components. In the Cambodian context, the ToT takes the ratio of the daily wage rates of unskilled laborers and the retail price of lowest quality rice in the market. This gives an indication of the amount of rice that an unskilled wage laborer can purchase with a daily wage.

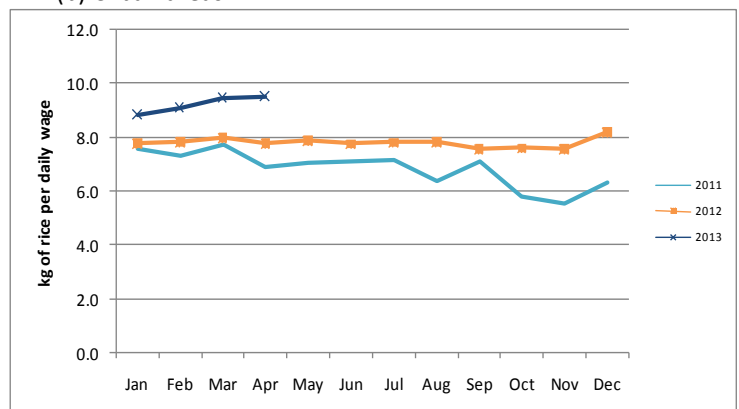
In April 2013, the ToT in rural areas was 9.7 kg/day, a decrease of 6.9% month-on-month; for urban areas, the ToT was 9.5 kg/day, an increase of 0.5% month-on-month. In rural areas the increase in rice prices outweighed the decrease in wage rates, causing the purchasing power of rural households to deteriorate. Conversely, in urban areas the increase in purchasing power was caused by the decrease in rice prices and increase in the unskilled wage rate (Figure 8).

Figure 8(a)(b): Terms of Trade of unskilled labor and rice

(a) Rural areas

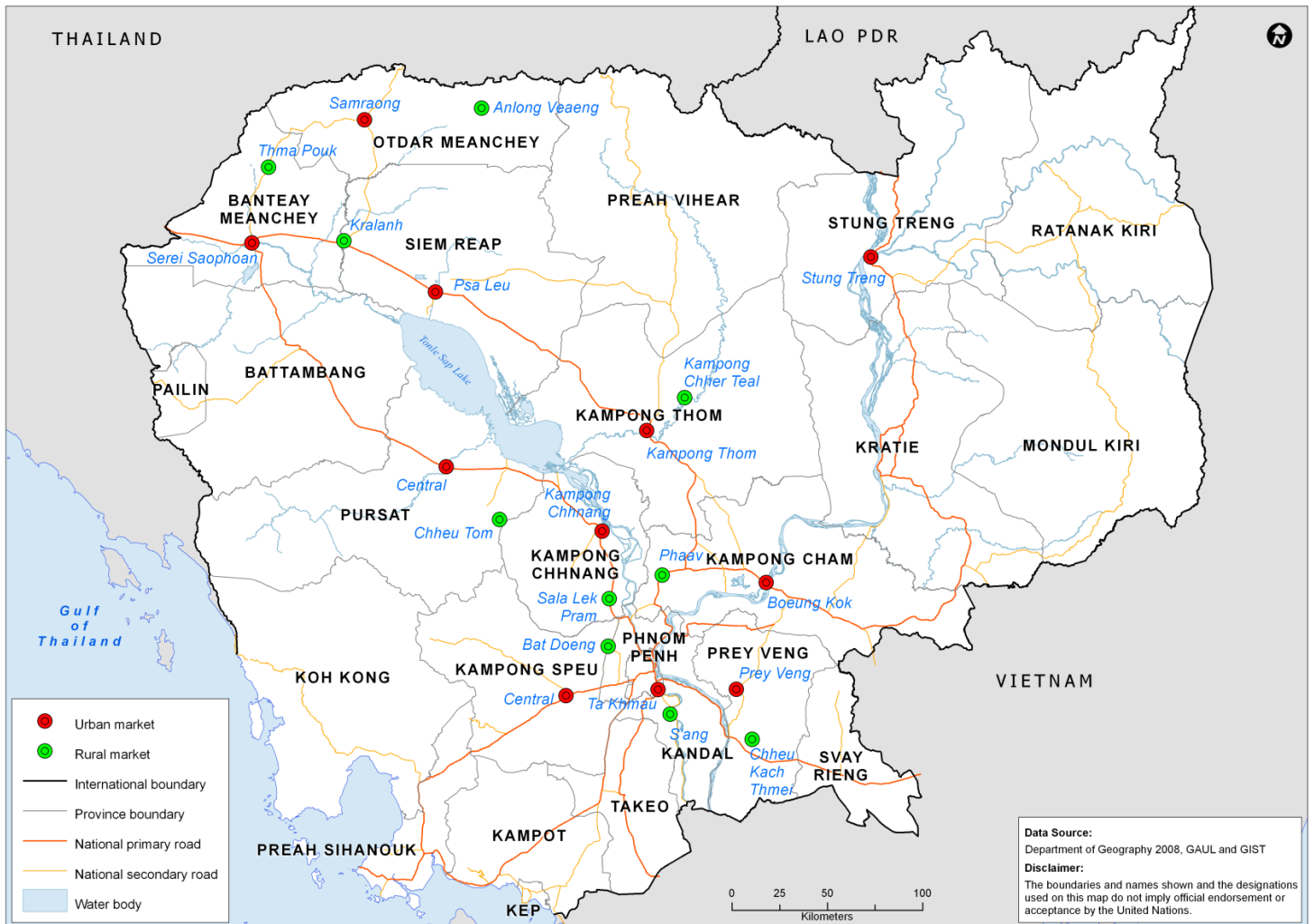


(b) Urban areas



Source: WFP

Appendix 1: Location of sentinel market sites in urban and rural areas in Cambodia



Contacts

Agricultural Marketing Office
 Department of Planning and Statistics, Ministry of Agriculture,
 Forestry and Fisheries
 Mr. Meach Yady (meachyady@gmail.com)
<http://www.agriculturalmarketinformation.org.kh>

United Nations World Food Programme
 Vulnerability Analysis and Mapping (VAM) Unit
 Rukhshona Rajabova (rukshona.rajabova@wfp.org), Yav Long
 (Yav.Long@wfp.org), Chanvibol Choeur (Chanvibol.Choeur@wfp.org),
 Kurt Burja (Kurt.Burja@wfp.org)
www.wfp.org/countries/cambodia

Appendix 2(a)(b): Price of food commodities by market

(a) Rural markets

Food Item	Province	Market	price (Riel/kg)	price change (%)			direction of change		
				1 month	3 months	1 year	1 month	3 months	1 year
Second quality rice	Banteay Meanchey	Thma Puok	-	-	-	-	-	-	-
	Siem Reap	Kralanh	-	-	-	-	-	-	-
	Oddar Meanchey	Anlong Veng	-	-	-	-	-	-	-
	Kampong Cham	Pha'av	1,667	-2.9	0.0	-12.3	↗	↗	↗
	Kampong Thom	Kampong Chhouteal	1,733	-1.9	-8.8	-3.7	↗	↗	↗
	Prey Veng	Chheu Kach Thmei	1,400	-	-	-	-	-	-
	Kampong Chhnang	Sala Lek Pram	1,833	4.8	-3.5	-20.3	↗	↗	↘
	Kampong Speu	Bat Doeng	1,800	0.0	-	-3.6	↗	-	↗
	Pursat	Chheu Tom	1,967	-8.5	15.7	-16.9	↘	↗	↘
	Stung Treng	n/a	-	-	-	-	-	-	-
Kandal	S'ang	2,000	-13.0	-4.8	0.0	↘	↗	↗	
Lowest quality rice	Banteay Meanchey	Thma Puok	2,033	1.7	13.0	-	↗	↗	-
	Siem Reap	Kralanh	1,700	13.3	4.1	1.5	↗	↗	↗
	Oddar Meanchey	Anlong Veng	-	-	-	-	-	-	-
	Kampong Cham	Pha'av	1,450	5.8	-6.5	-9.4	↗	↗	↗
	Kampong Thom	Kampong Chhouteal	-	-	-	-	-	-	-
	Prey Veng	Chheu Kach Thmei	1,500	0.0	0.0	-6.3	↗	↗	↗
	Kampong Chhnang	Sala Lek Pram	1,583	-4.0	-6.9	-12.0	↗	↗	-
	Kampong Speu	Bat Doeng	-	-	-	-	-	-	-
	Pursat	Chheu Tom	1,800	2.9	5.9	-7.7	↗	↗	↗
	Stung Treng	n/a	-	-	-	-	-	-	-
Kandal	S'ang	1,600	-5.9	-12.7	-13.5	↘	↘	↗	
Vegetable oil	Banteay Meanchey	Thma Puok	6,593	5.9	-5.8	9.9	↗	↗	↗
	Siem Reap	Kralanh	5,861	6.7	28.3	-6.4	↗	↗	↗
	Oddar Meanchey	Anlong Veng	-	-	-	-	-	-	-
	Kampong Cham	Pha'av	4,500	-1.5	0.7	-22.4	↗	↗	↘
	Kampong Thom	Kampong Chhouteal	5,000	0.0	-3.2	-10.7	↗	↗	↗
	Prey Veng	Chheu Kach Thmei	4,800	-4.0	-8.3	-19.1	↗	↗	↘
	Kampong Chhnang	Sala Lek Pram	5,533	9.2	12.2	-12.6	↗	↗	↘
	Kampong Speu	Bat Doeng	4,867	-2.7	-2.7	-18.0	↗	↗	↘
	Pursat	Chheu Tom	5,000	-2.0	0.0	-16.2	↗	↗	↘
	Stung Treng	n/a	-	-	-	-	-	-	-
Kandal	S'ang	4,800	1.1	-1.4	-19.1	↗	↗	↘	
Smoked fish	Banteay Meanchey	Thma Puok	24,038	13.2	33.5	13.1	↗	↗	↗
	Siem Reap	Kralanh	23,333	30.7	67.9	70.7	↗	↗	↗
	Oddar Meanchey	Anlong Veng	-	-	-	-	-	-	-
	Kampong Cham	Pha'av	18,000	0.0	-36.3	-	↗	↘	-
	Kampong Thom	Kampong Chhouteal	20,333	25.1	1.7	52.5	↗	↗	↗
	Prey Veng	Chheu Kach Thmei	-	-	-	-	-	-	-
	Kampong Chhnang	Sala Lek Pram	-	-	-	-	-	-	-
	Kampong Speu	Bat Doeng	21,000	-	-	23.5	-	-	↗
	Pursat	Chheu Tom	-	-	-	-	-	-	-
	Stung Treng	n/a	-	-	-	-	-	-	-
Kandal	S'ang	-	-	-	-	-	-	-	

Food Item	Province	Market	price (Riel/kg)	price change (%)			direction of change		
				1 month	3 months	1 year	1 month	3 months	1 year
Fresh fish	Banteay Meanchey	Thma Puok	-	-	-	-	-	-	-
	Siem Reap	Kralanh	4,667	-3.4	-	16.7	↗	-	↗
	Oddar Meanchey	Anlong Veng	-	-	-	-	-	-	-
	Kampong Cham	Pha'av	5,000	-3.2	3.4	5.3	↗	↗	↗
	Kampong Thom	Kampong Chhouteal	5,833	-27.1	-	-	↘	-	-
	Prey Veng	Chheu Kach Thmei	4,500	-	-10.0	-35.7	-	↗	↘
	Kampong Chhnang	Sala Lek Pram	5,000	0.0	-16.7	-	↗	↘	-
	Kampong Speu	Bat Doeng	5,500	0.0	10.0	-8.3	↗	↗	↗
	Pursat	Chheu Tom	6,000	14.3	20.0	-11.1	↗	↗	↗
	Stung Treng	n/a	-	-	-	-	-	-	-
Kandal	S'ang	-	-	-	-	-	-	-	
Pork with fat	Banteay Meanchey	Thma Puok	15,000	7.1	0.0	7.1	↗	↗	↗
	Siem Reap	Kralanh	12,000	0.0	16.1	0.0	↗	↗	↗
	Oddar Meanchey	Anlong Veng	-	-	-	-	-	-	-
	Kampong Cham	Pha'av	13,000	0.0	8.3	-11.4	↗	↗	↗
	Kampong Thom	Kampong Chhouteal	12,000	0.0	20.0	0.0	↗	↗	↗
	Prey Veng	Chheu Kach Thmei	12,667	-2.6	5.6	-9.5	↗	↗	↗
	Kampong Chhnang	Sala Lek Pram	12,000	-2.7	9.1	-12.2	↗	↗	↗
	Kampong Speu	Bat Doeng	13,667	0.0	10.8	-6.8	↗	↗	↗
	Pursat	Chheu Tom	14,000	6.3	7.7	0.0	↗	↗	↗
	Stung Treng	n/a	-	-	-	-	-	-	-
Kandal	S'ang	12,500	-12.8	-10.7	-16.7	↘	↘	↘	
Duck egg	Banteay Meanchey	Thma Puok	700	16.7	27.3	16.7	↗	↗	↗
	Siem Reap	Kralanh	607	12.3	21.3	49.2	↗	↗	↗
	Oddar Meanchey	Anlong Veng	-	-	-	-	-	-	-
	Kampong Cham	Pha'av	600	0.0	20.0	56.5	↗	↗	↗
	Kampong Thom	Kampong Chhouteal	560	-6.7	16.5	-	↘	↗	-
	Prey Veng	Chheu Kach Thmei	560	12.0	24.4	12.0	↗	↗	↗
	Kampong Chhnang	Sala Lek Pram	600	7.8	11.1	30.4	↗	↗	↗
	Kampong Speu	Bat Doeng	617	-	23.3	23.3	-	↗	↗
	Pursat	Chheu Tom	500	3.4	11.1	0.0	↗	↗	↗
	Stung Treng	n/a	-	-	-	-	-	-	-
Kandal	S'ang	600	9.8	9.8	47.5	↗	↗	↗	

- ↗ Price increase above normal fluctuation
- ↗ Normal price fluctuation
- ↘ Price decrease below normal fluctuation
- Commodity not available in reporting month

Price fluctuation is considered normal if change within:
5% for month, 10% for 3 months, 15% for 1 year

(b) Urban markets

Food Item	Province	Market	price (Riel/kg)	price change (%)			direction of change		
				1 month	3 months	1 year	1 month	3 months	1 year
Second quality rice	Banteay Meanchey	Serei Saophoan	2,300	9.5	9.5	9.5	↑	→	→
	Siem Reap	Psa Leu	2,033	15.1	19.6	15.1	↑	↑	↑
	Oddar Meanchey	Samraong	-	-	-	-	-	-	-
	Kampong Cham	Boeung Kok	2,150	0.0	9.3	-11.6	→	→	→
	Kampong Thom	Central	1,750	-2.8	-7.9	-6.3	→	→	→
	Prey Veng	Central	1,800	-25.0	2.9	-10.0	↓	→	→
	Kampong Chnang	Central	-	-	-	-	-	-	-
	Kampong Speu	Central	2,467	21.3	2.8	13.8	↑	→	→
	Pursat	Central	2,467	25.4	7.2	7.2	↑	→	→
	Stung Treng	Stung Treng	-	-	-	-	-	-	-
Kandal	Ta Khmao	2,200	0.0	0.0	-2.9	→	→	→	
Lowest quality rice	Banteay Meanchey	Serei Saophoan	1,950	0.9	2.6	2.6	→	→	→
	Siem Reap	Psa Leu	1,667	2.0	11.1	0.0	→	↑	→
	Oddar Meanchey	Samraong	-	-	-	-	-	-	-
	Kampong Cham	Boeung Kok	1,425	3.5	-18.6	-34.2	→	↓	↓
	Kampong Thom	Central	-	-	-	-	-	-	-
	Prey Veng	Central	1,767	-1.9	-	-1.9	→	→	→
	Kampong Chnang	Central	1,633	-	2.1	-14.0	-	→	→
	Kampong Speu	Central	1,800	-5.3	-1.8	12.0	↓	→	→
	Pursat	Central	1,950	11.4	6.4	-2.5	↑	→	→
	Stung Treng	Stung Treng	-	-	-	-	-	-	-
Kandal	Ta Khmao	1,967	-1.7	0.0	-6.3	→	→	→	
Vegetable oil	Banteay Meanchey	Serei Saophoan	6,410	16.7	-6.7	6.8	↑	→	→
	Siem Reap	Psa Leu	4,933	-1.3	-3.9	-17.8	→	→	↓
	Oddar Meanchey	Samraong	-	-	-	-	-	-	-
	Kampong Cham	Boeung Kok	5,000	2.7	4.2	-12.8	→	→	→
	Kampong Thom	Central	4,933	-4.5	-1.3	-17.8	→	→	↓
	Prey Veng	Central	6,167	12.1	23.3	2.8	↑	↑	→
	Kampong Chnang	Central	4,667	-0.7	-4.1	-22.2	→	→	↓
	Kampong Speu	Central	4,867	-0.7	8.1	-15.1	→	→	↓
	Pursat	Central	6,267	23.7	13.9	4.4	↑	↑	→
	Stung Treng	Stung Treng	-	-	-	-	-	-	-
Kandal	Ta Khmao	5,000	0.0	-3.2	-16.7	→	→	↓	
Smoked fish	Banteay Meanchey	Serei Saophoan	23,889	40.8	13.8	13.8	↑	↑	→
	Siem Reap	Psa Leu	-	-	-	-	-	-	-
	Oddar Meanchey	Samraong	-	-	-	-	-	-	-
	Kampong Cham	Boeung Kok	20,000	0.0	-24.5	29.0	→	↓	↑
	Kampong Thom	Central	20,500	-20.4	2.5	25.5	↓	→	↑
	Prey Veng	Central	-	-	-	-	-	-	-
	Kampong Chnang	Central	-	-	-	-	-	-	-
	Kampong Speu	Central	20,000	0.0	77.0	17.6	→	↑	↑
	Pursat	Central	-	-	-	-	-	-	-
	Stung Treng	Stung Treng	-	-	-	-	-	-	-
Kandal	Ta Khmao	-	-	-	-	-	-	-	

Food Item	Province	Market	price (Riel/kg)	price change (%)			direction of change		
				1 month	3 months	1 year	1 month	3 months	1 year
Fresh fish	Banteay Meanchey	Serei Saophoan	6,167	-11.9	37.0	37.0	↓	↑	↑
	Siem Reap	Psa Leu	5,167	14.8	-16.2	-	↑	↓	-
	Oddar Meanchey	Samraong	-	-	-	-	-	-	-
	Kampong Cham	Boeung Kok	5,400	0.0	8.0	-12.4	→	→	→
	Kampong Thom	Central	5,933	-1.1	-1.1	-3.8	→	→	→
	Prey Veng	Central	5,000	0.0	-3.2	3.4	→	→	→
	Kampong Chnang	Central	5,167	-8.8	3.3	-11.4	↓	→	→
	Kampong Speu	Central	6,000	-	0.0	0.0	-	→	→
	Pursat	Central	6,000	4.3	0.0	-14.3	→	→	→
	Stung Treng	Stung Treng	-	-	-	-	-	-	-
Kandal	Ta Khmao	5,833	-6.7	-2.8	-16.7	↓	→	↓	
Pork with fat	Banteay Meanchey	Serei Saophoan	15,000	4.7	7.1	0.0	→	→	→
	Siem Reap	Psa Leu	12,333	0.0	2.8	2.8	→	→	→
	Oddar Meanchey	Samraong	-	-	-	-	-	-	-
	Kampong Cham	Boeung Kok	14,500	1.2	3.6	-6.5	→	→	→
	Kampong Thom	Central	12,000	9.1	5.9	-7.7	↑	→	→
	Prey Veng	Central	13,000	-9.3	-2.5	-13.3	↓	→	→
	Kampong Chnang	Central	14,333	10.3	7.5	-4.4	↑	→	→
	Kampong Speu	Central	13,333	-2.4	8.1	8.1	→	→	→
	Pursat	Central	13,833	6.4	15.3	-1.2	↑	↑	→
	Stung Treng	Stung Treng	-	-	-	-	-	-	-
Kandal	Ta Khmao	15,667	4.4	4.4	-11.3	→	→	→	
Duck egg	Banteay Meanchey	Serei Saophoan	583	12.9	16.7	2.9	↑	↑	→
	Siem Reap	Psa Leu	600	20.0	20.0	25.9	↑	↑	↑
	Oddar Meanchey	Samraong	-	-	-	-	-	-	-
	Kampong Cham	Boeung Kok	590	7.3	15.6	36.2	↑	↑	↑
	Kampong Thom	Central	577	-	15.3	-	-	↑	-
	Prey Veng	Central	580	-	2.4	50.0	-	→	↑
	Kampong Chnang	Central	593	7.9	18.7	29.9	↑	↑	↑
	Kampong Speu	Central	607	13.8	18.2	45.6	↑	↑	↑
	Pursat	Central	587	17.3	31.3	17.3	↑	↑	↑
	Stung Treng	Stung Treng	-	-	-	-	-	-	-
Kandal	Ta Khmao	600	9.8	10.4	38.5	↑	↑	↑	

- ↑ Price increase above normal fluctuation
- Normal price fluctuation
- ↓ Price decrease below normal fluctuation
- Commodity not available in reporting month

Price fluctuation is considered normal if change within:
5% for month, 10% for 3 months, 15% for 1 year