



ព្រឹត្តិបត្រថ្លៃអាហារ និងប្រាក់ឈ្នួលពលកម្មនៅកម្ពុជា



CAMBODIA FOOD PRICE AND WAGE BULLETIN

Agricultural Marketing Office, DPS, MAFF

November 2013, Issue 57



HIGHLIGHTS

- **Food purchasing power of households** decreased in rural areas by 4.8% and increased by 9.1% in urban areas on a month-on-month basis.
- **Retail price of lowest quality rice** in rural and urban areas decreased by 0.8% and 4.0% on a month-on-month basis, respectively.
- **Wholesale price of mixed rice** decreased by 2.0% month-on-month and by 9.3% on a year-on-year basis.
- The **Inflation Rate** was 4.2% in October. Month-on-month food prices increased by 0.2% while gasoline prices remained stable.
- **FAO Food Price Index** averaged 206.3 points, a month-on-month increase of 0.2%; it remained almost unchanged due to stable meat and dairy prices.
- **Thai and Vietnamese Export price of rice:** Thai rice prices decreased by 5.2% while Vietnamese rice prices increased by 3.6% on a month-on-month basis.

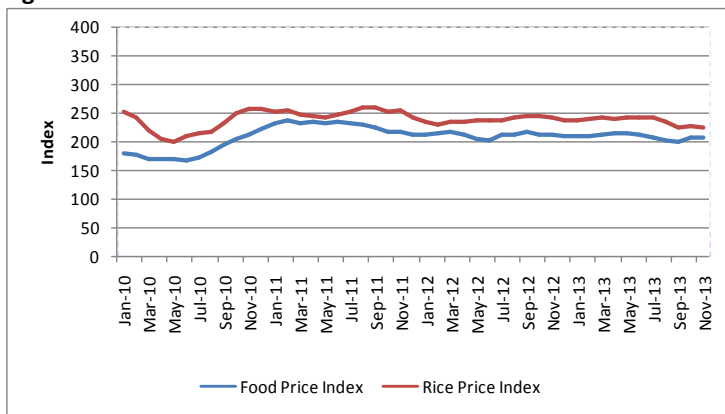
Overview

This Bulletin is a joint publication¹ by the Agricultural Marketing Office (Department of Planning and Statistics) of the Ministry of Agriculture, Forestry and Fisheries (AMO MAFF) and the United Nations World Food Programme Cambodia. It monitors the price of food commodities and wage rates of unskilled labor on a monthly basis. It also aims to detect changes and identify trends in the food purchasing power of vulnerable households.

International Food and Rice Prices

The FAO Food Price Index², measures international price level of a basket of key food commodities. The index averaged 206.3 points in November 2013, a slight increase of 0.2% on a month-on-month basis due to the stability of meat and dairy prices. The International Rice Price Index averaged 224 points, decreasing by 1.3% on a month-on-month basis.

Figure 1: FAO Food Price Index and Rice Price Index



Source: FAO, <http://www.fao.org/worldfoodsituation/wfs-home/foodpricesindex/en/>

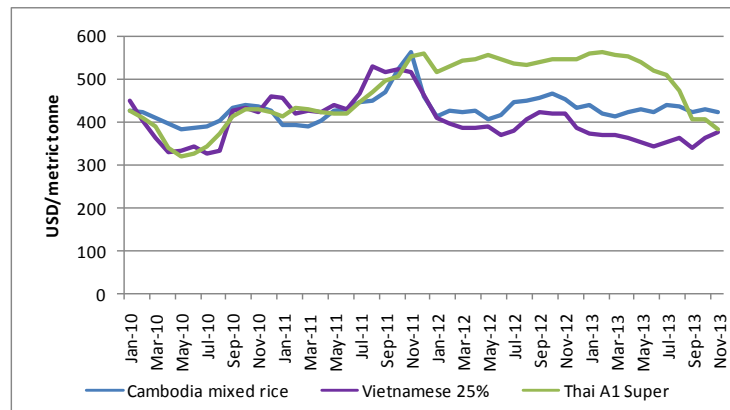
CONTENT

Overview.....	1
International Food and Rice Prices	1
Regional Rice Wholesale Prices.....	1
Cambodia Consumer Price Index (CPI)	2
Local Food Commodity Prices.....	2
Price Monitoring and Forecasting	2
Unskilled Wage.....	3
Terms of Trade	3
Appendix 1: Sentinel Surveillance Market Sites	4
Appendix 2: Price of Food Commodities by Market	5

Regional Rice Wholesale Prices

In November 2013, the f.o.b. prices³ of Thai A1 Super white rice (100% broken) and Vietnamese white rice (25% broken) were 384 USD/mt and 375 USD/mt, respectively (Figure 2).

Figure 2: Export price of Thai and Vietnamese white rice and Cambodia mixed rice⁴



Source: FAO, <http://www.fao.org/es/esc/prices/PricesServlet.jsp?lang=en>

¹ This publication has been produced jointly since September 2011.

² The FAO Food Price Index consists of the average of commodity group price indices (i.e. meat, dairy, cereals, oils/fats, and sugar) weighted with the average export shares of each of the groups for 2002-2004.

³ Free on board (f.o.b.) price includes all charges up to the placing of goods on board a ship at the port of departure specified by the buyer.

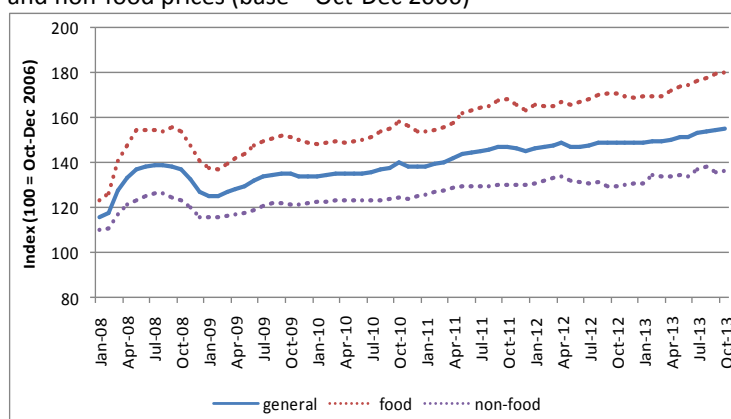
⁴ Mixed rice is considered a low-quality type of rice.

The export price of Thai A1 Super white rice decreased by 5.2% month-on-month and 29.5% year-on-year. The price of Vietnamese white rice increased by 3.6% month-on-month, but decreased by 10.3% on a year-on-year basis. According to the Thai Rice Exporters Association rice exports are expected to rebound between November and February when Thai rice prices dip to their lowest levels due to arrival of the new harvest. The Agricultural Ministry of the Vietnam reported that China remains one of the biggest rice buyers, which accounts for more than 30% of Vietnamese rice's export volume.

Cambodia Consumer Price Index (CPI)

The general Consumer Price Index (CPI)⁵ measures the cost of a consumption basket composed of 259 items. Each item is weighted based on their importance in an average household's expenditure⁶. In October 2013, the general CPI averaged 155.3 points, an increase of 0.3% on a month-on-month basis. The inflation rate, as measured by the year-on-year increase in the Consumer Price Index, was 4.2%. Non-food prices averaged 136.5 points and increased by 0.3% month-on-month. Gasoline prices remained stable month-on-month and were 3.5% lower compared to same period last year. The Food Price Index measures the cost of the food items in the general CPI's consumption basket. Food items make up 43.2% of the total consumption basket. In October 2013, the food price index was 180.1, a slight increase of 0.2% month-on-month and 5.5% year-on-year (Figure 3).

Figure 3: Relative change in general consumer prices, food prices and non-food prices (base = Oct-Dec 2006)



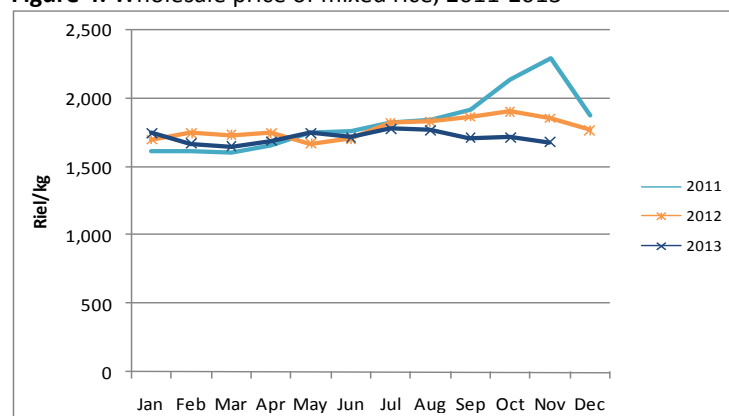
Source: National Institute of Statistics

Local Food Commodity Prices

Data⁷ from AMO MAFF shows that the average wholesale price of mixed rice was 1,685.5 riel/kg, a decrease of 2.0% month-on-month and 9.3% on a year-on-year basis in November 2013 (Figure 4). Adjusting for the annual inflation rate, the real wholesale price of mixed rice was 13.5% lower on a year-on-year basis.

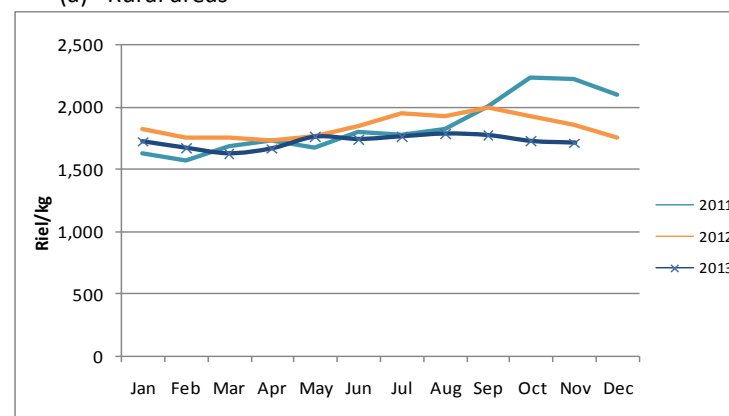
In November 2013, the average retail price of the lowest quality rice⁸ in rural and urban areas was 1,713 riel/kg and 1,756.1 riel/kg, respectively, representing a month-on-month decrease in rural and urban areas of 0.8% and 4.0%, respectively (Figure 5).

Figure 4: Wholesale price of mixed rice, 2011-2013

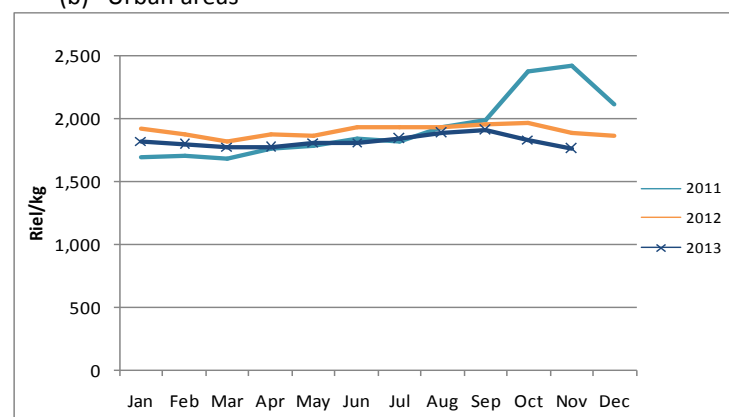


Source: AMO MAFF, <http://www.agriculturalmarketinformation.org.kh>

Figure 5 (a)(b): Retail price of lowest quality rice, 2011-2013
(a) Rural areas



(b) Urban areas



Source: WFP

On a year-on-year basis, nominal retail rice prices in rural and urban areas decreased by 8.1% and 6.5%, respectively. Taking the inflation rate into account, the year-on-year real retail price of rice in rural and urban areas decreased by 12.3% and 10.7%, respectively. Rice traders reported that the downward price pressure is caused by increased surplus due to the availability of old stock and new harvest.

Retail prices of other food commodities (i.e. second quality rice, vegetable oil, smoked fish, fresh fish, pork, and duck eggs) in each of the 10 rural and 11 urban markets are presented in Appendix 2.

Price Monitoring and Forecasting

FAO's price monitoring tool compares recent actual wholesale prices from AMO MAFF with "normal" price levels. The normal price level takes into account historical price levels and adjusts for inflation and seasonal factors. A discrepancy between current actual prices and "normal" prices indicates that current prices are

⁵ The CPI is collected and reported by the National Institute of Statistics (NIS). Data from November 2013 was not available at the time of publication.

⁶ Relative item expenditure weights are derived from the 2004 Cambodia Socio-Economic Survey and adjusted to October-December 2006 price levels.

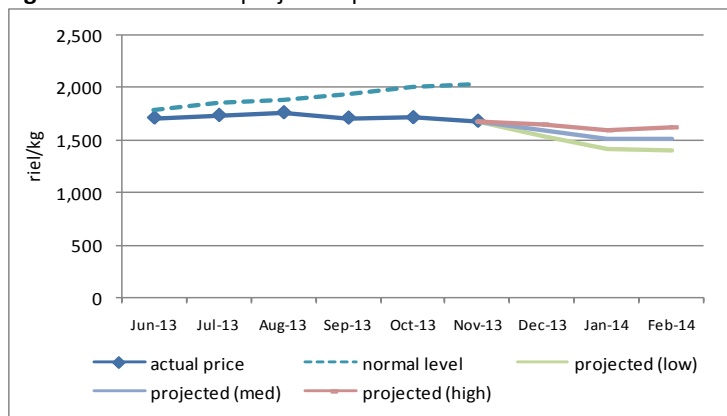
⁷ From provincial markets in Kampong Chhnang, Takeo, Siem Reap, Prey Veng, Phnom Penh, Kampot, Battambang, Banteay Meanchey, and Kampong Cham

⁸ Mixed rice, IR rice and Banla Pdao rice

higher/lower than what would be expected. In November 2013, the actual wholesale price of mixed rice was 17.1% lower than the expected normal historical price⁹.

The price monitoring tool also projects prices based on the current price, current inflation rate and seasonal factors. The high and low bands are set so that actual prices will fall within the range 80% of the time. Prices for the next three months (December, January and February) were projected. The model forecasts that the wholesale rice prices are expected to ease, if prices follow normal seasonal patterns (Figure 6).

Figure 6: Normal and projected prices of wholesale rice



Source: AMO, WFP, FAO

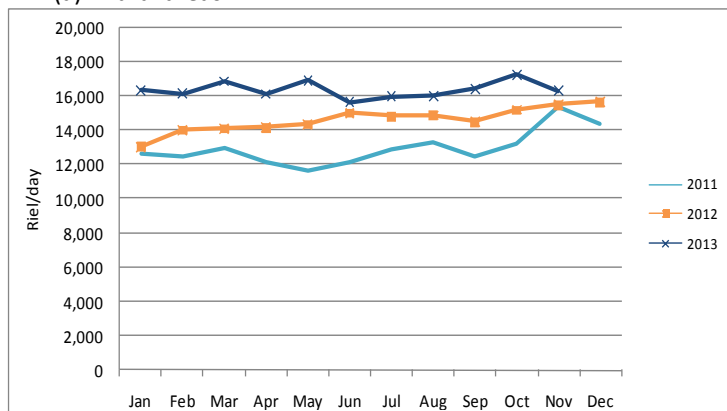
Unskilled Wage

Daily wages of unskilled workers engaged in rice and non-rice farming and construction work are monitored by WFP on a monthly basis. In November 2013, the average wage of unskilled labor was 16,333 riel/day in rural areas and 18,500 riel/day in urban areas, a decrease of 5.5% and an increase of 4.7% on a month-on-month basis, respectively (Figure 7).

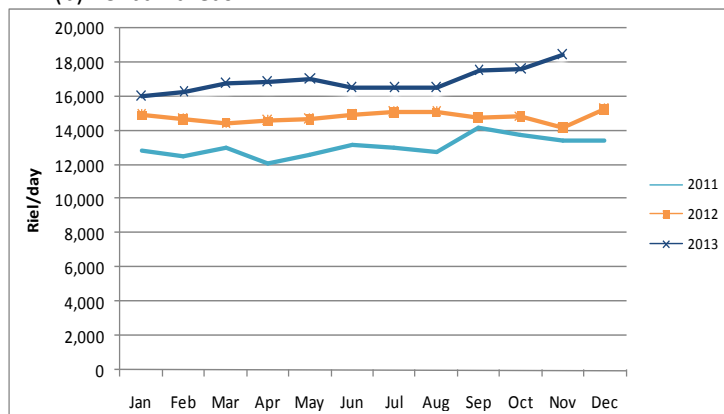
Key informants interviews suggest that the unskilled wage rate decreased in rural areas due to the fact that floods affected some cultivated areas, thereby delaying this year's wet season rice harvest which has not even started in some areas. In urban areas, unskilled wages surged due to increased labor migration to work in factories, which is seen as more stable employment which is not dependent on seasonal factors.

Figure 7(a)(b): Daily wage of unskilled labor

(a) Rural areas



(b) Urban areas



Source: WFP

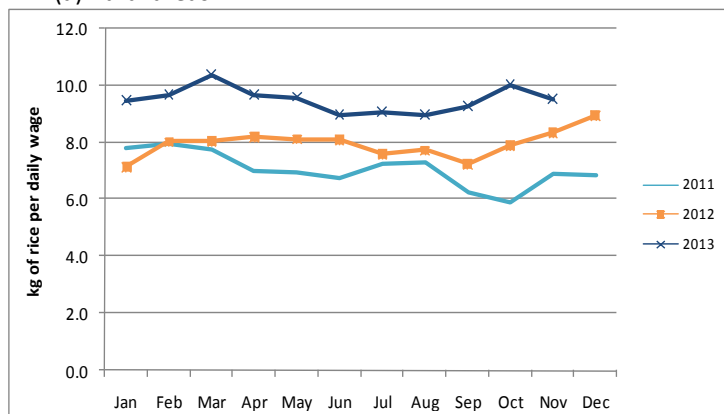
Terms of Trade

Terms of trade (ToT) is used to assess household food purchasing power by taking the ratio of two different components. In the Cambodian context, the ToT takes the ratio of the daily wage rates of unskilled laborers and the retail price of lowest quality rice in the market. This gives an indication of the amount of rice that an unskilled wage laborer can purchase with a daily wage.

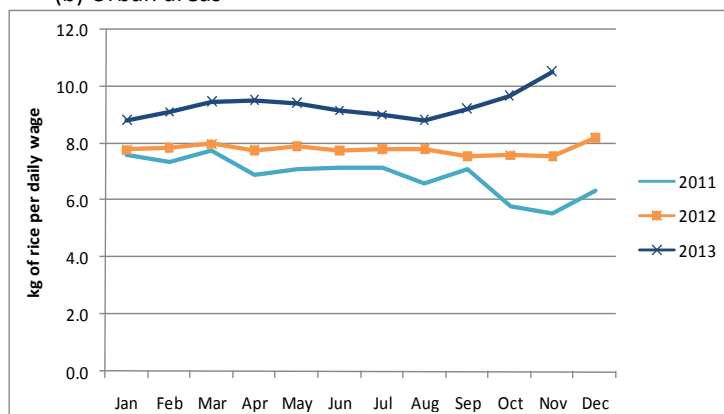
In November 2013, the ToT in rural areas was 9.5 kg/day and 10.5 kg/day in urban areas; a month-on-month decrease of 4.8% in rural areas and an increase of 9.1% in urban areas. In rural areas, the decrease in unskilled wage outweighs the decrease in rice prices, causing vulnerable households' purchasing power to deteriorate. Conversely, in urban areas, the increase in unskilled wage offset the increase in rice prices, causing household purchasing power to improve (Figure 8).

Figure 8(a)(b): Terms of Trade of unskilled labor and rice

(a) Rural areas



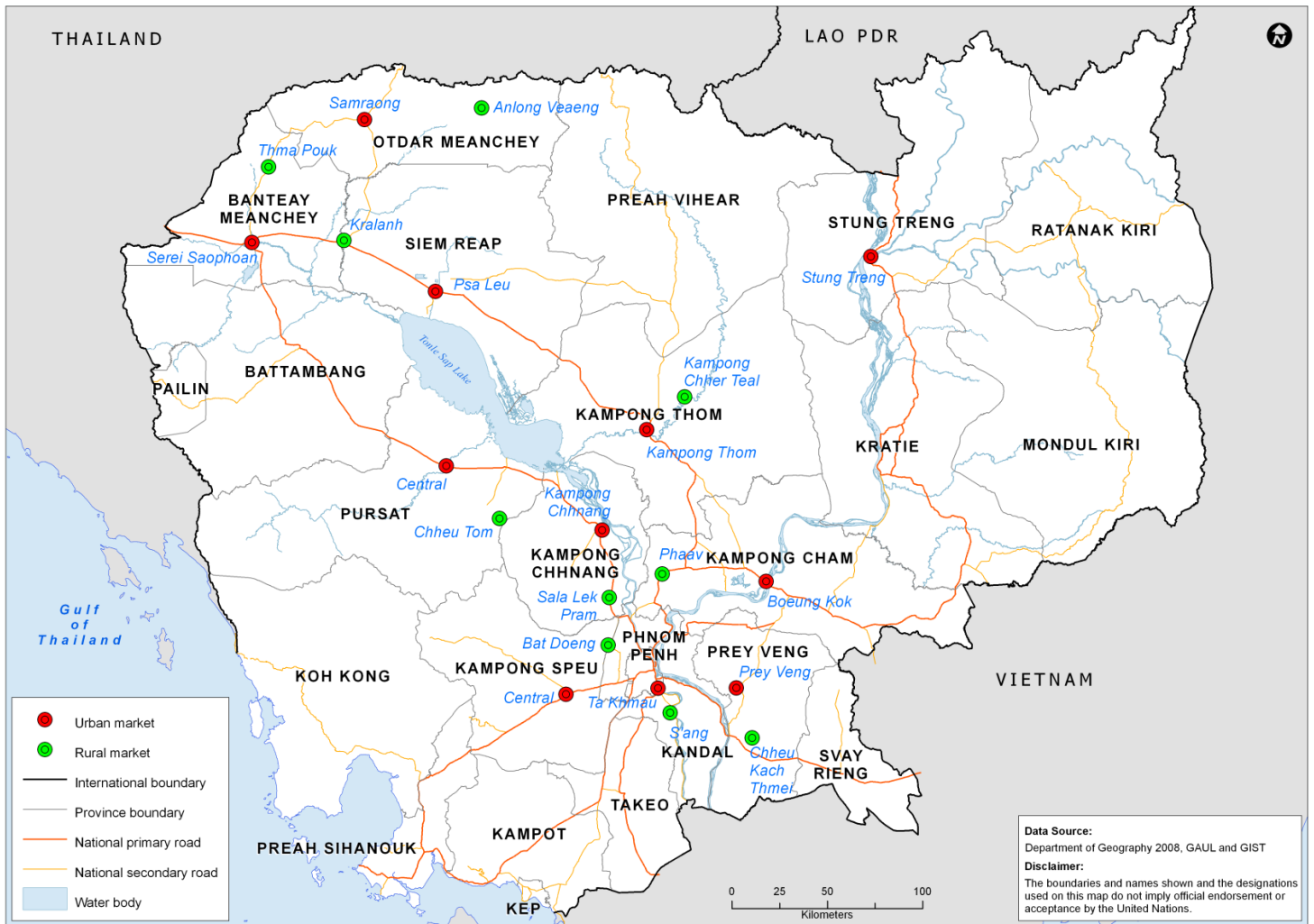
(b) Urban areas



Source: WFP

⁹ 2008 prices are excluded from the FAO price monitoring tool analysis as the food price crisis in mid-2008 distorts the seasonal factors.

Appendix 1: Location of sentinel market sites in urban and rural areas in Cambodia



Contacts

Agricultural Marketing Office

Department of Planning and Statistics, Ministry of Agriculture, Forestry and Fisheries
 Mr. Meach Yady (meachyady@gmail.com)
<http://www.agriculturalmarketinformation.org.kh>

United Nations World Food Programme

Vulnerability Analysis and Mapping (VAM) Unit
 Yav Long (Yav.Long@wfp.org)
 Rukhshona Rajabova (rukhshona.rajabova@wfp.org)
 Chanvibol Choeur (Chanvibol.Choeur@wfp.org)
www.wfp.org/countries/cambodia

Appendix 2(a)(b): Retail price of food commodities by market

(a) Rural markets

Food Item	Province	Market	price (Riel/kg)	price change (%)			direction of change		
				1 month	3 months	1 year	1 month	3 months	1 year
Second quality rice	Banteay Meanchey	Thma Puok	-	-	-	-	-	-	-
	Siem Reap	Kralanh	-	-	-	-	-	-	-
	Oddar Meanchey	Anlong Veng	2,150	-10.4	-9.2	-18.9	↓	→	↓
	Kampong Cham	Pha'av	1,733	-1.9	-	2.0	→	-	→
	Kampong Thom	Kampong Chheuteal	1,767	-1.9	-1.9	-	→	→	-
	Prey Veng	Chheu Kach Thmei	-	-	-	-	-	-	-
	Kampong Chnang	Sala Lek Pram	1,867	-6.7	1.8	-17.6	↓	→	↓
	Kampong Speu	Bat Doeng	-	-	-	-	-	-	-
	Pursat	Chheu Tom	2,000	0.0	-	-	→	-	-
	Stung Treng	n/a	-	-	-	-	-	-	-
Kandal	S'ang	2,000	0.0	-2.4	-9.1	→	→	→	
Lowest quality rice	Banteay Meanchey	Thma Puok	2,000	-2.4	-2.4	-4.8	→	→	→
	Siem Reap	Kralanh	1,400	0.0	-6.7	-10.8	→	→	→
	Oddar Meanchey	Anlong Veng	1,900	7.5	5.6	7.5	↑	→	→
	Kampong Cham	Pha'av	1,500	-8.2	-11.8	-7.7	↓	↓	→
	Kampong Thom	Kampong Chheuteal	-	-	-	-	-	-	-
	Prey Veng	Chheu Kach Thmei	1,533	-1.1	-6.1	9.5	→	-	→
	Kampong Chnang	Sala Lek Pram	1,733	-5.5	2.0	-13.3	↓	→	→
	Kampong Speu	Bat Doeng	2,000	0.0	0.0	-7.7	→	→	→
	Pursat	Chheu Tom	1,550	3.3	-18.4	-22.5	→	↓	↓
	Stung Treng	n/a	-	-	-	-	-	-	-
Kandal	S'ang	1,800	0.0	0.0	-5.3	→	→	→	
Vegetable oil	Banteay Meanchey	Thma Puok	5,495	-9.1	-9.1	-15.5	↓	→	↓
	Siem Reap	Kralanh	5,195	0.0	-4.2	-13.0	→	→	→
	Oddar Meanchey	Anlong Veng	5,500	0.0	3.1	-1.2	→	→	→
	Kampong Cham	Pha'av	5,000	-3.2	-9.1	4.2	→	→	→
	Kampong Thom	Kampong Chheuteal	5,333	10.3	9.6	-2.3	↑	→	→
	Prey Veng	Chheu Kach Thmei	5,667	18.1	21.9	9.0	↑	↑	→
	Kampong Chnang	Sala Lek Pram	6,133	9.5	11.5	12.2	↑	↑	→
	Kampong Speu	Bat Doeng	5,567	17.6	16.0	5.7	↑	↑	→
	Pursat	Chheu Tom	5,867	20.5	17.3	6.0	↑	↑	→
	Stung Treng	n/a	-	-	-	-	-	-	-
Kandal	S'ang	5,800	25.2	23.4	10.8	↑	↑	→	
Smoked fish	Banteay Meanchey	Thma Puok	-	-	-	-	-	-	-
	Siem Reap	Kralanh	-	-	-	-	-	-	-
	Oddar Meanchey	Anlong Veng	-	-	-	-	-	-	-
	Kampong Cham	Pha'av	-	-	-	-	-	-	-
	Kampong Thom	Kampong Chheuteal	18,850	-	-	-	-	-	-
	Prey Veng	Chheu Kach Thmei	-	-	-	-	-	-	-
	Kampong Chnang	Sala Lek Pram	20,000	11.1	-	-	↑	-	-
	Kampong Speu	Bat Doeng	20,000	5.3	-36.5	-20.0	↑	↓	↓
	Pursat	Chheu Tom	-	-	-	-	-	-	-
	Stung Treng	n/a	-	-	-	-	-	-	-
Kandal	S'ang	-	-	-	-	-	-	-	

Food Item	Province	Market	price (Riel/kg)	price change (%)			direction of change		
				1 month	3 months	1 year	1 month	3 months	1 year
Fresh fish	Banteay Meanchey	Thma Puok	-	-	-	-	-	-	-
	Siem Reap	Kralanh	-	-	-	-	-	-	-
	Oddar Meanchey	Anlong Veng	5,000	7.1	0.0	0.0	↑	→	→
	Kampong Cham	Pha'av	-	-	-	-	-	-	-
	Kampong Thom	Kampong Chheuteal	6,667	-	2.6	-	-	→	-
	Prey Veng	Chheu Kach Thmei	-	-	-	-	-	-	-
	Kampong Chnang	Sala Lek Pram	5,500	-1.8	3.1	-	→	→	-
	Kampong Speu	Bat Doeng	5,300	-3.6	-3.6	6.0	→	→	→
	Pursat	Chheu Tom	-	-	-	-	-	-	-
	Stung Treng	n/a	-	-	-	-	-	-	-
Kandal	S'ang	5,500	0.0	10.0	10.0	→	→	→	
Pork with fat	Banteay Meanchey	Thma Puok	15,000	0.0	0.0	0.0	→	→	→
	Siem Reap	Kralanh	12,000	0.0	0.0	20.0	→	→	↑
	Oddar Meanchey	Anlong Veng	11,333	-2.9	-8.1	-12.8	→	→	→
	Kampong Cham	Pha'av	14,000	0.0	7.7	16.7	→	→	↑
	Kampong Thom	Kampong Chheuteal	12,000	0.0	0.0	20.0	→	→	↑
	Prey Veng	Chheu Kach Thmei	12,000	-2.7	0.0	0.0	→	→	→
	Kampong Chnang	Sala Lek Pram	12,333	0.0	2.8	2.8	→	→	→
	Kampong Speu	Bat Doeng	13,000	0.0	0.0	8.3	→	→	→
	Pursat	Chheu Tom	14,000	0.0	-1.8	0.0	→	→	→
	Stung Treng	n/a	-	-	-	-	-	-	-
Kandal	S'ang	15,000	2.3	2.3	15.4	→	→	↑	
Duck egg	Banteay Meanchey	Thma Puok	700	0.0	0.0	27.3	→	→	↑
	Siem Reap	Kralanh	560	-8.2	-9.2	24.4	↓	→	↑
	Oddar Meanchey	Anlong Veng	617	2.8	5.7	36.0	→	→	↑
	Kampong Cham	Pha'av	557	3.7	1.2	46.5	→	→	↑
	Kampong Thom	Kampong Chheuteal	587	-1.1	1.7	-	→	→	-
	Prey Veng	Chheu Kach Thmei	617	8.8	5.1	37.0	↑	→	↑
	Kampong Chnang	Sala Lek Pram	587	0.0	-7.9	12.8	→	→	→
	Kampong Speu	Bat Doeng	607	-	0.0	16.7	-	→	↑
	Pursat	Chheu Tom	573	-1.1	-4.4	22.9	→	→	↑
	Stung Treng	n/a	-	-	-	-	-	-	-
Kandal	S'ang	593	0.0	-5.3	31.9	→	→	↑	

- ↑ Price increase above normal fluctuation
- Normal price fluctuation
- ↓ Price decrease below normal fluctuation
- Commodity not available in reporting month

Price fluctuation is considered normal if change within:
5% for month, 10% for 3 months, 15% for 1 year

(b) Urban markets

Food Item	Province	Market	price (Riel/kg)	price change (%)			direction of change		
				1 month	3 months	1 year	1 month	3 months	1 year
Second quality rice	Banteay Meanchey	Serei Saophoan	2,550	-1.9	2.0	10.9	↔	↔	↔
	Siem Reap	Psa Leu	2,300	0.0	-1.4	27.8	↔	↔	↑
	Oddar Meanchey	Samraong	2,100	-12.5	-8.7	-	↓	↔	-
	Kampong Cham	Boeung Kok	1,867	-5.1	-6.7	-1.8	↓	↔	↔
	Kampong Thom	Central	1,800	12.5	5.9	-14.3	↑	↔	↔
	Prey Veng	Central	2,050	-5.4	2.5	-3.9	↓	↔	↔
	Kampong Chnang	Central	2,200	10.0	20.0	-15.4	↑	↑	↓
	Kampong Speu	Central	1,967	-1.7	-22.9	-13.2	↔	↓	↔
	Pursat	Central	2,033	1.7	-11.6	-11.6	↔	↓	↔
	Stung Treng	Stung Treng	1,900	-	-	-	-	-	-
Kandal	Ta Khmao	2,200	0.0	0.0	-5.7	↔	↔	↔	
Lowest quality rice	Banteay Meanchey	Serei Saophoan	2,000	1.7	0.0	-4.8	↔	↔	↔
	Siem Reap	Psa Leu	1,600	-4.0	-7.7	-5.9	↔	↔	↔
	Oddar Meanchey	Samraong	1,900	-5.0	-5.0	-2.6	↔	↔	↔
	Kampong Cham	Boeung Kok	1,567	-	-21.7	-3.6	-	↓	↔
	Kampong Thom	Central	1,600	-	0.0	-	-	↔	-
	Prey Veng	Central	1,600	0.0	-15.8	-8.6	↔	↓	↔
	Kampong Chnang	Central	1,800	0.0	3.8	-10.0	↔	↔	↔
	Kampong Speu	Central	1,833	1.9	-8.3	-6.0	↔	↔	↔
	Pursat	Central	1,800	0.0	-1.8	-1.8	↔	↔	↔
	Stung Treng	Stung Treng	1,750	-	-	-	-	-	-
Kandal	Ta Khmao	1,867	-6.7	-6.7	-6.7	↓	↔	↔	
Vegetable oil	Banteay Meanchey	Serei Saophoan	5,311	-3.3	-2.7	-14.3	↔	↔	↔
	Siem Reap	Psa Leu	5,467	9.3	9.3	-3.5	↑	↔	↔
	Oddar Meanchey	Samraong	5,333	-3.0	3.2	-5.9	↔	↔	↔
	Kampong Cham	Boeung Kok	5,700	6.9	3.6	21.3	↑	↔	↑
	Kampong Thom	Central	5,500	10.0	10.0	0.0	↑	↔	↔
	Prey Veng	Central	6,000	20.0	17.6	9.1	↑	↑	↔
	Kampong Chnang	Central	5,267	12.1	12.9	1.9	↑	↑	↔
	Kampong Speu	Central	5,467	17.1	16.3	2.5	↑	↑	↔
	Pursat	Central	5,500	10.0	-3.5	-3.5	↑	↔	↔
	Stung Treng	Stung Treng	5,000	-	-	-	-	-	-
Kandal	Ta Khmao	5,833	19.0	20.7	0.0	↑	↑	↔	
Smoked fish	Banteay Meanchey	Serei Saophoan	-	-	-	-	-	-	-
	Siem Reap	Psa Leu	-	-	-	-	-	-	-
	Oddar Meanchey	Samraong	-	-	-	-	-	-	-
	Kampong Cham	Boeung Kok	25,000	-	-	-	-	-	-
	Kampong Thom	Central	23,000	-	-	-	-	-	-
	Prey Veng	Central	-	-	-	-	-	-	-
	Kampong Chnang	Central	-	-	-	-	-	-	-
	Kampong Speu	Central	26,500	-23.9	-	26.2	↓	-	↑
	Pursat	Central	-	-	-	-	-	-	-
	Stung Treng	Stung Treng	-	-	-	-	-	-	-
Kandal	Ta Khmao	-	-	-	-	-	-	-	

Food Item	Province	Market	price (Riel/kg)	price change (%)			direction of change		
				1 month	3 months	1 year	1 month	3 months	1 year
Fresh fish	Banteay Meanchey	Serei Saophoan	-	-	-	-	-	-	-
	Siem Reap	Psa Leu	5,500	10.0	10.0	-	↑	↔	-
	Oddar Meanchey	Samraong	5,167	7.6	12.3	3.3	↑	↑	↔
	Kampong Cham	Boeung Kok	5,667	3.0	13.3	13.3	↔	↑	↔
	Kampong Thom	Central	-	-	-	-	-	-	-
	Prey Veng	Central	-	-	-	-	-	-	-
	Kampong Chnang	Central	5,833	0.0	-2.8	-2.8	↔	↔	↔
	Kampong Speu	Central	5,667	-5.6	-5.6	-	↓	↔	-
	Pursat	Central	-	-	-	-	-	-	-
	Stung Treng	Stung Treng	-	-	-	-	-	-	-
Kandal	Ta Khmao	6,000	0.0	-4.0	0.0	↔	↔	↔	
Pork with fat	Banteay Meanchey	Serei Saophoan	15,000	0.0	7.1	0.0	↔	↔	↔
	Siem Reap	Psa Leu	12,000	0.0	0.0	19.2	↔	↔	↑
	Oddar Meanchey	Samraong	13,333	-9.1	2.6	-4.8	↓	↔	↔
	Kampong Cham	Boeung Kok	15,000	0.0	7.1	25.0	↔	↔	↑
	Kampong Thom	Central	12,667	-5.0	5.6	12.6	↓	↔	↔
	Prey Veng	Central	13,667	-4.7	5.1	5.1	↔	↔	↔
	Kampong Chnang	Central	14,333	-2.3	2.4	16.2	↔	↔	↑
	Kampong Speu	Central	13,667	-2.4	1.2	13.9	↔	↔	↔
	Pursat	Central	14,000	0.0	0.0	16.7	↔	↔	↑
	Stung Treng	Stung Treng	13,000	-	-	-	-	-	-
Kandal	Ta Khmao	15,667	-2.1	-2.1	4.4	↔	↔	↔	
Duck egg	Banteay Meanchey	Serei Saophoan	583	2.9	-2.8	16.7	↔	↔	↑
	Siem Reap	Psa Leu	617	0.0	-2.6	45.7	↔	↔	↑
	Oddar Meanchey	Samraong	567	-9.6	-2.9	13.3	↓	↔	↔
	Kampong Cham	Boeung Kok	500	-15.7	-9.1	31.6	↓	↔	↑
	Kampong Thom	Central	570	-	-5.0	-	-	↔	-
	Prey Veng	Central	540	-	-10.0	20.0	-	↔	↑
	Kampong Chnang	Central	590	0.6	-2.7	28.3	↔	↔	↑
	Kampong Speu	Central	613	-12.4	2.2	47.2	↓	↔	↑
	Pursat	Central	583	-1.7	-1.7	41.1	↔	↔	↑
	Stung Treng	Stung Treng	607	-	-	-	-	-	-
Kandal	Ta Khmao	600	0.0	2.9	22.4	↔	↔	↑	

- ↑ Price increase above normal fluctuation
- ↔ Normal price fluctuation
- ↓ Price decrease below normal fluctuation
- Commodity not available in reporting month

Price fluctuation is considered normal if change within:
5% for month, 10% for 3 months, 15% for 1 year